

Ufs

No 1099

December 30, 2025

Notices to Mariners, SWEDEN



NtM-Editorial office
Swedish Maritime Administration
601 78 Norrköping
Sweden
Phone: +46 771 630 605
E-mail: ufs@sjofartsverket.se

Publisher: Patrik Wiberg
www.sjofartsverket.se



**SWEDISH MARITIME
ADMINISTRATION**

[illegible]

ANNOUNCEMENTS

* 19745 (T)

Sweden. not area bound. General information to seafarers during winter conditions.

Time: Until spring of 2026.

Seafarers are advised to particularly observe the following during the winter season:

BEFORE BREAKING ICE: To avoid accidents to persons using the ice for transportation and recreation special attention is required before breaking the ice near shore and in archipelagos, see further information in separate temporary NtM.

ICE BRIDGES: Pontoons are sometimes laid across narrow straits enabling transport to islands, when neither vessels nor road vehicles can be used.

BUOYAGE: Buoyage in Bay of Bothnia, Sea of Bothnia and Lake Vänern is generally withdrawn during the ice season. Buoyage in harbours may also be withdrawn. The movement of ice can bring buoys and spar buoys off position or submerge them. Lights, Racons, AIS, radar reflectors and top marks may be damaged or withdrawn during the winter. During ice conditions, floating aids to navigation should generally be considered to be unreliable. In the spring it generally takes time before all aids to navigation have been overhauled and/or replaced.

CABLE FERRIES: The cable might lie on the ice which makes it impossible to pass the ferry route. At some ferry crossings speed restrictions during winter apply. Refer to information in Swedish NtM.

DGPS: The range of DGPS transmitters may be reduced due to ice or snow covering the transmitters.

ICE BOOMS: In some places in Trollhätte canal, ice booms are established during winter to avoid ice affecting traffic. For the same reason, a rope is laid across River Nordre älv at Kornhall.

ICE-BREAKING SERVICE: The Swedish governmental ice-breaking service provides sea ice-breaking from open waters to inshore waters protected from sea- and pack ice. Information regarding winter navigation, contact information to ice breakers etc. can be found on the website www.sjofartsverket.se/winternavigation and in the booklet "Winter Navigation". The website <http://baltice.org> contains information for winter navigation in the entire Baltic Sea area.

ICE MAPS and TRAFFIC RESTRICTIONS: Daily updated ice maps and current ice restrictions are published on the websites www.smhi.se/icechart and <http://baltice.org>.

LIGHTS: The lens on lights and light-buoys may become covered by frost, snow or ice. This could make the light faint or to seem unlit. Sectors may falsely appear as white. Snow on the solar panels can result in discharged batteries, which could result in the light becoming unlit or faint. The light character might also be incorrect.

NOTICES TO MARINERS AND NAVIGATIONAL WARNINGS: Normally no navigational warning or NtM is issued when buoys are withdrawn in waters covered by ice. This also applies to buoys in areas that rarely are covered by ice, e.g. The Sound or the west coast of Sweden. If a buoy is withdrawn or a racon is removed well before the waters have been covered by ice, a warning and notice will be issued in accordance with normal procedures.

PILOT BOARDING: Pilot boarding positions may be moved or withdrawn in ice covered areas. Updated information can be requested from the Pilot coordination center or from the pilot boat.

PROHIBITION TO BREAK THE ICE: A prohibition to break the ice may be issued in some areas and fairways. Refer to Swedish NtM.

REPORTING: Ships en route to Swedish and Finnish ports in Bay of Bothnia and Sea of Bothnia, which are subject to ice restrictions, shall report to ICE INFO on VHF channel 82 or by telephone +46(0)10 492 76 00 when passing latitude 60-00N.

RACON: When severe ice conditions are expected, Racon buoys may be replaced by ordinary light-buoys in order to avoid equipment damage.

ROADS ON THE ICE: Ice roads are sometimes established where the ice is strong enough to be used for transports.

This is more common in the north. Masters must make sure that the ice is not used for transports before proceeding in ice-covered waters between inhabited islands and the mainland.

SPEED RESTRICTIONS: In some fairways speed restrictions apply when the water is covered by ice. This is announced in Swedish NtM.

TRAFFIC SEPARATION SCHEMES: TSS may be temporarily withdrawn by the Swedish Transport Agency. Information about this is published in Navigational warnings and in Swedish NtM.

WINTER NAVIGATION: Official publication with useful information for shipping in the Baltic Sea area during winter conditions. The publication is available for download at www.sjofartsverket.se/winternavigation or may be ordered from the Swedish Maritime Administration's Ice-breaking Department, Ph +46 (0)771 63 25 25.

Ufs A, chapter 6.5

https://ufs.sjofartsverket.se/pdf/Ufs_A_en.pdf

Sjöfartsverket. Publ. 26 Nov 2025

* 19746 (T)

Sweden. not area bound. Wintertime recommendations for maritime traffic for the prevention of ice-skating accidents etc.

The following recommendations have been drafted in order to prevent accidents for ice-skaters and others who make use of ice-covered waters for transportation and/or recreation due to ice has been broken.

The guidelines are also intended to limit the risk of persons being cut-off from the ability of reaching shore safely.

Follow the fairways and pay attention

Ships should, when transiting ice-covered waters, as far as possible, make use of charted fairways or the inofficial routes used by local passenger boats and islanders.

If you see persons on the ice in vicinity of your planned route you should ensure that ice is not broken up at their location or that a channel cut through the ice does not prevent these people from reaching shore safely.

Speed restrictions and bans on breaking ice

In order to ensure that ice is not broken - which would render it impossible to be used for transportation - waters may be closed to navigation or speed restrictions may apply at certain locations during the winter. Information on such restrictions will be published in swedish NtM.

Cautions be considered before breaking a channel through the ice

Transiting ice-covered waters near shore and in archipelagos require detailed route planning. If possible, follow the fairways as mentioned or existing channels through the ice. Before breaking a new channel you should ascertain local conditions and ensure that you are not cutting off connection to the mainland for islanders.

Inform the public before breaking a new channel through the ice

Radio Sweden P4 - Sveriges Radio P4 - Trafikredaktionen

Send an e-mail to trafikredaktionen@sverigesradio.se with information on when and where the ice will or has been broken. State detailed information about the location, name of the vessel and contact details.

Follow up by calling +46 20 999 444 or +46 8 784 50 00, making reference to your e-mail.

Information will be broadcast on channel P4 during weekdays 0600-1800 LT and will additionally be published on the website <https://sverigesradio.se/sida/trafiken/>

Skridskonätet

Send an e-mail to fartyg@skridsko.net. The contents of the e-mail will automatically be published on the website www.skridsko.net/mail/fartyg/. The e-mail should contain the following information:

Subject: Location of the channel through the ice, ex. "Mälaren. Lövholmen-Stäket."

Text: Where/when when a channel will be broken or an existing channel through the ice has been observed. If possible, enclose a map delineating the area.

Ufs A, chapter 6.5
https://ufs.sjofartsverket.se/pdf/Ufs_A_en.pdf

NOTICES

Areas without notices in this booklet

| |
|----------------------------------|
| Bay of Bothnia |
| The Quark |
| Sea of Bothnia |
| Sea of Åland and Archipelago Sea |
| Gulf of Finland |
| Gulf of Riga |
| South-Eastern Baltic |
| South-Western Baltic |
| The Belts |
| Kattegat |
| Lake Vänern and Trollhätte Canal |
| Inshore waters |
| not area bound |

Northern Baltic

* 19810 (T)

Chart: 6181

Sweden. Northern Baltic. Lake Mälaren and Södertälje Canal. Södertälje kanal and lock. Fairway partly closed January 1 - December 31, 2026.

Expired notices: [2024:1047/18997\(T\)](#)

Time: Jan 1 - Dec 31, 2026. Weekdays (except holidays) between 1100 - 1900 LT.

The fairway through Södertälje kanal and lock is closed for vessels exceeding any of the following: LOA 70 meters, beam 14 meters or draught 4,5 meters

The fairway is closed between positions a) and b).

| | | | | |
|--------------------------------|----|-----------|------------|--------------|
| Closed fairway, northern limit | a) | 59-12,27N | 017-37,43E | Mälarhamnen |
| Closed fairway, southern limit | b) | 59-10,90N | 017-39,38E | Igelstaviken |

During above stated time the fairway at the lock ('Slussen') in Södertälje is closed for all vessels of 24 m length or above.

The area is limited to the lock and pile fending on both sides of the lock.

| | | |
|-----------------|-----------|------------|
| Södertälje lock | 59-11,56N | 017-37,94E |
|-----------------|-----------|------------|

Bsp Mälaren - Hjälaren 2024/s30, s31

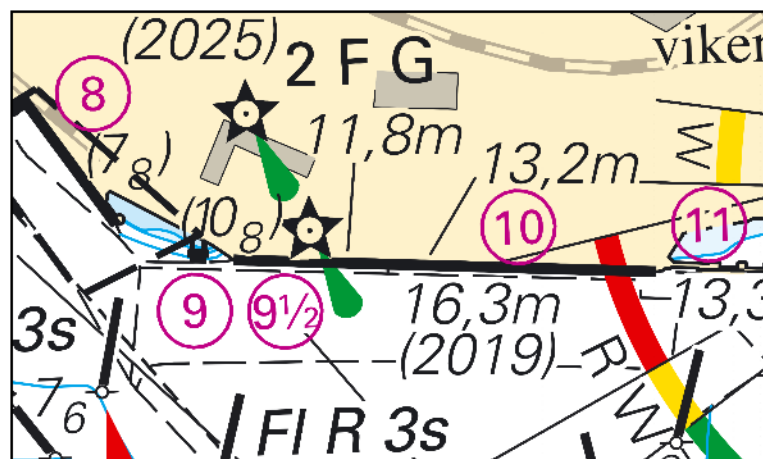
* 19812

Chart: 6211

Sweden. Northern Baltic. Port of Oxelösund. Depth. Quays.

| | | | | | |
|---------------|---------------------------------|----|------------|-------------|-------------------|
| Insert | quay | a) | 58-39,647N | 017-06,858E | refer to chartlet |
| Amend | depth at quay from 11.8 to 10.8 | b) | 58-39,667N | 017-06,880E | |
| Delete | quay number 9½ | c) | 58-39,692N | 017-06,880E | |
| Insert | quay numbers 9 and 9½ | d) | 58-39,623N | 017-06,895E | refer to chartlet |

Bsp Ostkusten 2023/s20, s21, Bsp Ostkusten 2025/s20, s21



Quays at Port of Oxelösund

Sjöfartsverket. Publ. 19 Dec 2025

*** 19821 (T)****Chart: 6163****Sweden. Northern Baltic. Dalarö. Dalarö canal. Askfatshamnen. Closed area.**

Period: January 19 - February 28, 2026.

Closed area at 'Askfatshamnen' marina due to dredging operations.

| | | |
|---------------|------------|-------------|
| Askfatshamnen | 59-08,158N | 018-24,110E |
|---------------|------------|-------------|

Bsp Stockholm M 2024/s42, s44, Bsp Stockholm S 2024/s06, s09



Closed area. Askfatshamnen, Dalarö

Länsstyrelsen Stockholm. Publ. 30 Dec 2025

Lake Mälaren and Södertälje Canal

*** 19593 (T)****Chart: 6181****Sweden. Lake Mälaren and Södertälje Canal. Södertälje. Channel 'Södertälje kanal'. The lock in Södertälje. Fairway closed for all traffic.**

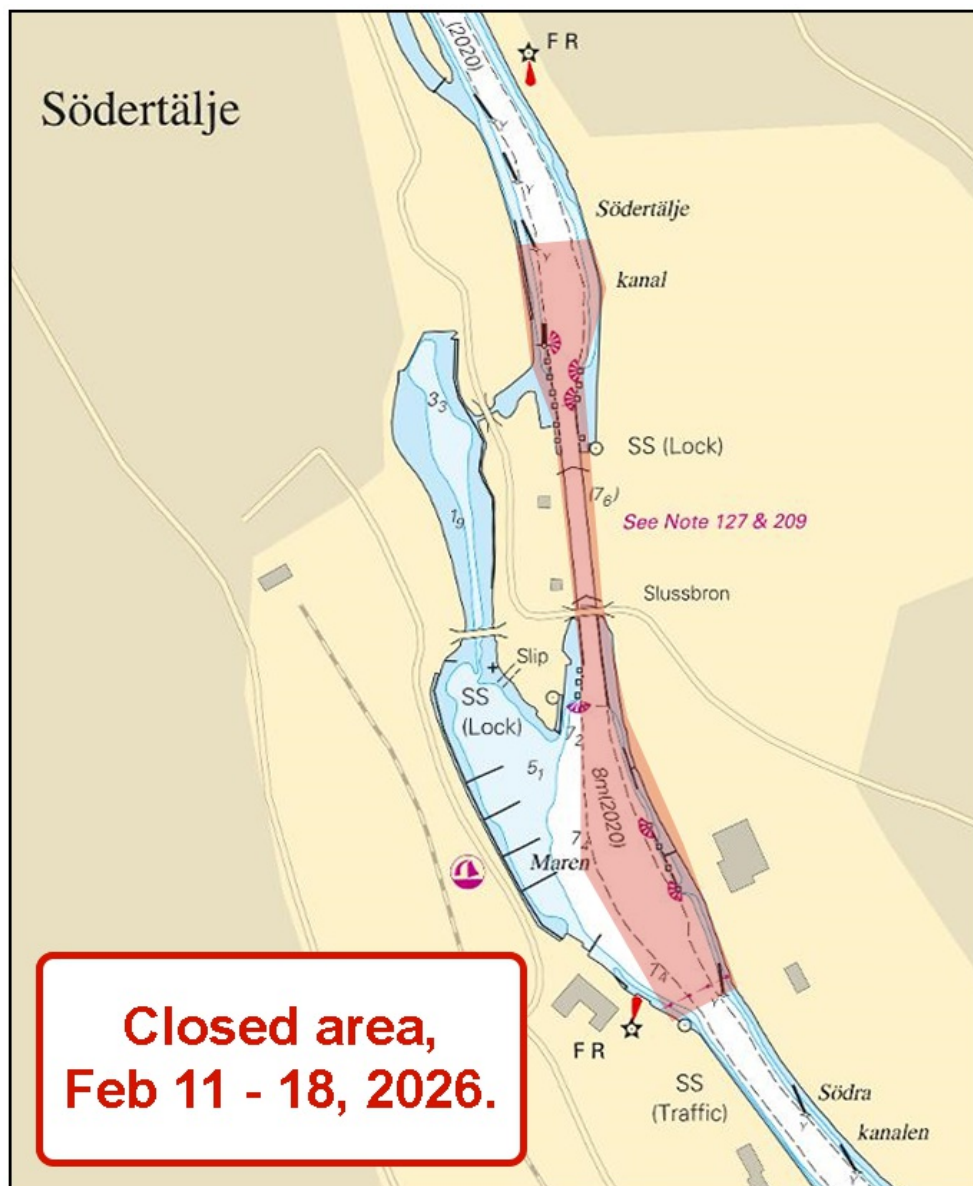
Time: February 11, 0700 LT - February 18, 0700 LT, 2026.

During the time stated above, the fairway, in the part of the canal 'Södertälje kanal' given in the table below, is closed to all maritime traffic.

The area is closed due to work in the lock.

| | | | |
|--|----|------------|-------------|
| Northern boundary line between a) - b) | a) | 59-11,735N | 017-37,870E |
| | b) | 59-11,745N | 017-37,946E |
| Southern boundary line between c) - d) | c) | 59-11,293N | 017-38,040E |
| | d) | 59-11,311N | 017-38,107E |

Bsp Mälaren - Hjälaren 2024/s30, s31



Closed area in the canal 'Södertälje kanal'

*** 19802 (T)****Chart: 6181**

Sweden. Lake Mälaren and Södertälje Canal. Södertälje. Södertälje channel. Bridges 'Södra kanalbroarna'. No bridge opening.

Period: January 20, 2200 (LT) - January 21, 0500 (LT) and January 27, 2200 (LT) - January 28, 0500 (LT), 2026.

No bridge opening. Vessels not requiring bridge opening can pass. Vertical clearance is 26 meters.

| | | |
|------------------------------|----------|------------|
| Bridges 'Södra kanalbroarna' | 59-11,1N | 017-38,55E |
|------------------------------|----------|------------|

Bsp Mälaren - Hjälmaren 2024/s30

Sjöfartsverket. Publ. 30 Dec 2025

*** 19810 (T)****Chart: 6181**

Sweden. Northern Baltic. Lake Mälaren and Södertälje Canal. Södertälje kanal and lock. Fairway partly closed January 1 - December 31, 2026.

The notice is displayed in its entirety under the area Northern Baltic in the booklet.

Central Baltic

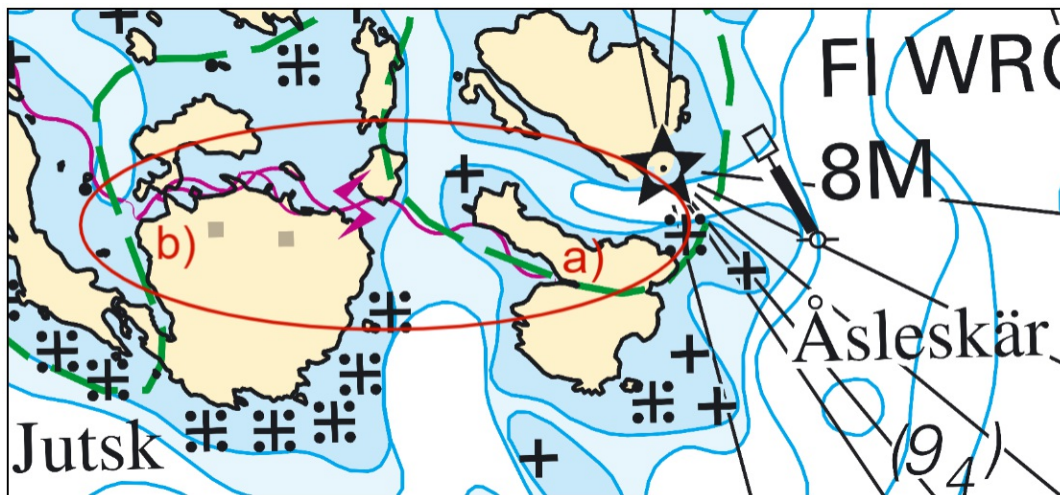
* 19769

Chart: 623

Sweden. Central Baltic. NE of Västervik. Jutskär. Åsleskär. Submarine power cable.

| | | | | | |
|--------|---------------------------------------|----|-----------|------------|--------------|
| Insert | submarine power cable between a) - b) | a) | 57-50,33N | 016-48,50E | See chartlet |
| | | b) | 57-50,38N | 016-47,90E | |

Bsp Ostkusten 2023/s51, Bsp Ostkusten 2025/s51



Submarine power cable between Jutskär och Åsleskär

Vattenfall. Publ. 30 Dec 2025

* 19820

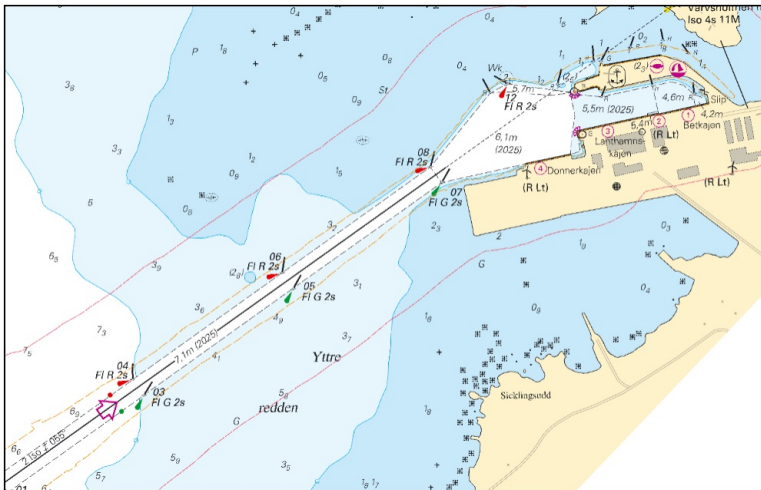
Chart: 62, 71

Sweden. Central Baltic. Fairway to Klintehamn. Depths.

A hydrographic survey in Klintehamn has shown other depths than charted. Important amendments are presented in the table below, and will be published in the next print of the affected chart. The changes are available as an ENC update.

| | | | | |
|--------|--|----|------------|-------------|
| Amend | swept area 4,9 (2017) to dredged area 4,6 | a) | 57-23,312N | 018-11,340E |
| Amend | swept area 5,9 (2017) to dredged area 5,5 (2025) and extend as shown | b) | 57-23,294N | 018-11,187E |
| Insert | dredged area 5,4 m | c) | 57-23,280N | 018-11,275E |
| Insert | dredged area 5,7 m | d) | 57-23,317N | 018-10,929E |
| Amend | swept area 6,7 (2017) to dredged area 6,1 (2025) | e) | 57-23,251N | 018-10,891E |
| Amend | dredged area 7,1 (2017) to dredged area 7,1 (2025) | f) | 57-22,974N | 018-10,103E |

Bsp Ostkusten 2023/s64, Bsp Ostkusten 2025/s64



Depths, Klintehamn

Southern Baltic

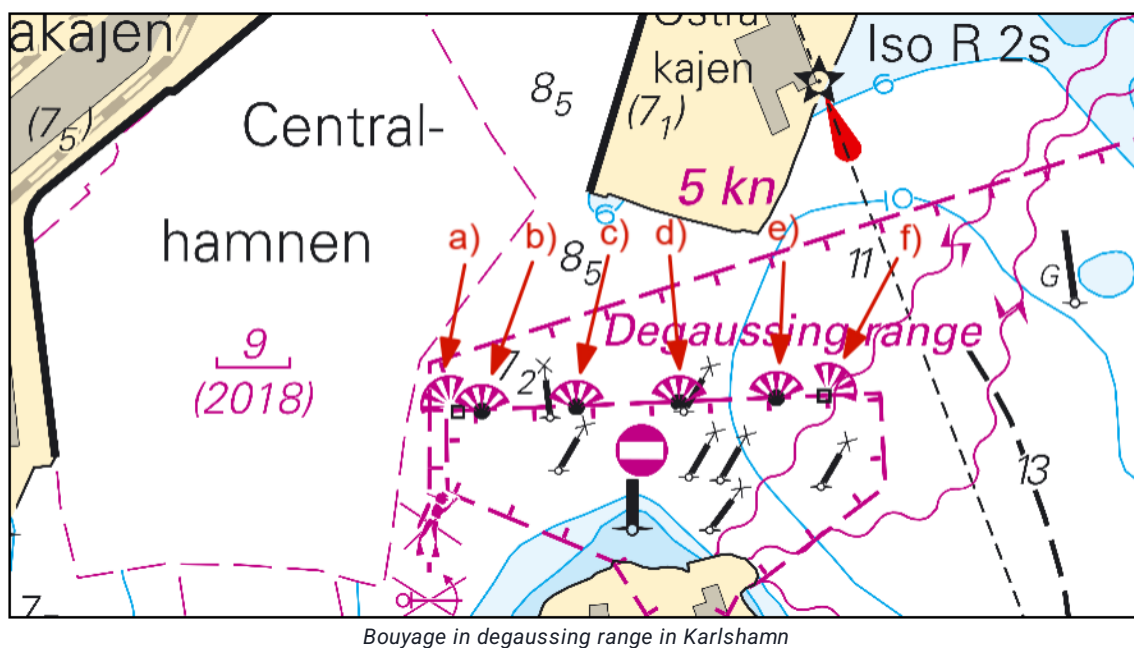
*** 19735**

Chart: 7421

Sweden. Southern Baltic. Karlshamn. Kastellet. Degaussing range. Buoyage.

| | | | | | |
|---------------|--------------------------|--|----|------------|-------------|
| Insert | floodlighting of dolphin | | a) | 56-09,705N | 014-51,815E |
| Amend | dolphin to floodlit pile | and move approx. 30 m to the west to position b) | b) | 56-09,705N | 014-51,829E |
| Amend | dolphin to floodlit pile | and move approx. 15 m to the west to position c) | c) | 56-09,706N | 014-51,883E |
| Amend | dolphin to floodlit pile | | d) | 56-09,708N | 014-51,942E |
| Amend | dolphin to floodlit pile | and move approx. 15 m to the east to position e) | e) | 56-09,709N | 014-51,998E |
| Insert | floodlighting of dolphin | | f) | 56-09,71N | 014-52,025E |

Bsp Hanöbukten 2022/s47



Sjöfartsverket. Publ. 30 Dec 2025

*** 19785 (T)****Chart: 741****Sweden. Southern Baltic. SW of Karlskrona. Hasslö. Bridge between Almö udde and Hasslö. Fairway closed.**

Time: January 13, 2026, 0600 - 2200 (LT).

Fairway passing under bridge between 'Almö udde' and 'Hasslö' is closed for all traffic due to maintenance works.

| | | |
|---|----------|-----------|
| Bridge between 'Almö udde' and 'Hasslö' | 56-07,7N | 015-27,5E |
|---|----------|-----------|

Not shown in ENC.

Bsp Hanöbukten 2022/s16, s19

Sjöfartsverket. Publ. 29 Dec 2025

The Sound

19806**Chart: 921****Denmark. The Sound. Köpenhamn. Tuborg. Skudeløbet. Buoyage.**

| | | | | |
|--------|------------------------------|----|-----------|------------|
| Delete | north cardinal buoy | a) | 55-44,47N | 012-37,95E |
| Delete | port hand light buoy Fl R 3s | b) | 55-44,27N | 012-37,22E |
| Delete | light Iso R 4s | c) | 55-42,73N | 012-35,31E |

Bsp Sydkysten 2020/s14, s15, s48, BSP Sydkysten 2025/s14, s15, s48

Danish ENC. Publ. 23 Dec 2025

Skagerrak

* 19784

Chart: 934, 937

Sweden. Skagerrak. Kosterhavet. Prohibited areas. Diving prohibited.

| | | | | |
|---------------|---|----|-----------|------------|
| Insert | diving prohibited on existing restricted area | a) | 59-00,72N | 011-07,00E |
| Insert | diving prohibited on existing restricted area | b) | 58-56,20N | 010-54,20E |
| Insert | diving prohibited on existing restricted area | c) | 58-52,50N | 011-05,20E |
| Insert | diving prohibited on existing restricted area | d) | 58-49,60N | 011-04,90E |
| Insert | diving prohibited on existing restricted area | e) | 58-41,80N | 011-02,40E |
| Insert | diving prohibited on existing restricted area | f) | 58-35,10N | 011-04,70E |

BSP Västkusten N 2025/s06, s08, s09, s10, s12

Länsstyrelsen i Västra Götaland. Publ. 23 Dec 2025