

Ufs

No 1098

December 17, 2025

Notices to Mariners, SWEDEN



NtM-Editorial office
Swedish Maritime Administration
601 78 Norrköping
Sweden
Phone: +46 771 630 605
E-mail: ufs@sjofartsverket.se

Publisher: Patrik Wiberg
www.sjofartsverket.se



**SWEDISH MARITIME
ADMINISTRATION**

Affected charts and Notices

Each PDF-file consists of a number of notices also accessible on www.sjofartsverket.se/ntm

Each booklet contains information on changes made to official Swedish nautical charts, as well as essential information on occurrences that pertain to safe navigation in Swedish waters.

Information available on foreign waters is limited. Ufs is not suitable for the task of keeping BA-charts and other nautical charts updated.

Note: Unintentional page breaks may occur as the PDF-file is generated automatically.

Announcements – General information, e.g. new chart editions, statutes/decrees from national authorities

Notices – Chart corrections and temporary/preliminary notices for a given geographical location

An asterisk (*) in front of the notice number denotes that the notice is based on source material obtained from a Swedish national source and that the details stated therein affect Swedish waters.

When a notice number is followed by a '(P)' this signifies that the information contained therein is of a preliminary nature. An upcoming notice containing a chart correction will replace the former.

Similarly, when the letter '(T)' is used this indicates that the notice is of a temporary nature.

In case no period of validity is stated, such a notice will be invalidated either when a new temporary notice or a chart correction replaces it.

Information in temporary and preliminary notices are generally available as an update to ENC. In case ENC updates are not available, the notice will state 'Not shown in ENC'.

Bearings are true and given clockwise from 000° to 360° and, when describing a light house beam, indicate a direction from seaward towards shore.

Note: Chartlets are intended to simplify chart correction work and are not always true to scale. Generally, these pictorials show the largest charted scale available for respective area.

The respective informant is responsible for factual content.

Please refer to more information on the use of Ufs in the official Swedish publication **Ufs A**.

Reporting dangers and errors

All observations concerning floating aids to navigation, unlit beacons and lights, objects adrift or any other occurrence that may have a detrimental impact on the safety at sea are to be reported to Sweden Traffic at the earliest possible opportunity.

Call: Sweden Traffic
Channel: Appropriate working channel
Phone: +46 771 630 685 (24/7)
E-mail: swedentraffic@sjofartsverket.se

[illegible]

ANNOUNCEMENTS

*** 19778**

Sweden. not area bound. Merry Christmas and a Happy New Year!

The Swedish Maritime Administration NtM office would like to wish you a Merry Christmas and a Happy New Year.

We thank all of you who over the past year have provided information which have resulted in Notices to Mariners and/or corrections to charts and ENCs. We also want to thank all of you who use the Swedish Maritime Administration's products and have studied the information in Swedish NtM. Also a special thanks to those who have provided comments and suggestions for the improvement of our products.

We are looking forward to continued good cooperation in the coming year!

PLEASE NOTE that no NtM booklet will be published during the Christmas week (week 52), 2025.

Swedish NtM Office	Tel: +46771630605	ufs@sjofartsverket.se
--------------------	-------------------	--



Merry christmas and Happy new year

Sjöfartsverket, Ufs-redaktionen / Swedish NtM, editorial staff. Publ. 17 Dec 2025

*** 19790 (T)**

**Sweden. not area bound. Information from Swedish Maritime Administration.
No published NtM booklet on december 25, 2025.**

Period: Christmas 2025

Due to the Christmas holliday, no NtM booklet will be published during Christmas week of 2025. Notices will be published online as per normal routine on <https://ufs.sjofartsverket.se/> and will be included in the following week's booklet.

<https://ufs.sjofartsverket.se/en/>

Sjöfartsverket. Publ. 17 Dec 2025

* 19803

Chart: 6181

Sweden. Lake Mälaren and Södertälje Canal. Södertälje. Bridges 'Södra Kanalbroarna'. Times for bridge opening. December 2025 - December 2026.

Opening times are valid from December 15, 2025.

Opening times:

Daily:	0032 – 0052 LT
	0206 – 0226 LT
	0306 – 0326 LT
	0406 – 0426 LT
	2320 – 2340 LT
Monday - Friday:	1012 – 1032 LT
	1327 – 1347 LT
	1942 – 2002 LT
Saturday - Sunday:	0706 – 0726 LT
	1427 – 1447 LT (Winter: 251214 - 260618, 260817 - 261212)
	1435 – 1455 LT (Summer: 260619 - 260816)
Saturday:	1113 – 1133 (Winter: 251214 - 260618, 260817 - 261212)
	1120 – 1140 (Summer: 260619 - 260816)
	2035 – 2055
Sunday	1013 – 1033 (Winter: 251214 - 260618, 260817 - 261212)
	1020 – 1040 (Summer: 260619 - 260816)

Contact Södertälje Canal on telephone: +46 771-630 655 or VHF ch. 68 at least 4 hours before passage.

Minor deviations may occur on holidays and on day before holiday. The schedule includes time used for swinging the bridges. Minor delays may occur due to crossing railway traffic.

Bridges 'Södra kanalbroarna'	59-11,09N	017-38,58E
------------------------------	-----------	------------

www.sjofartsverket.se/en/services/bridges-and-canals/

Bsp Mälaren - Hjälmarén 2024/s30, s31

NOTICES

Areas without notices in this booklet

Bay of Bothnia
The Quark
Sea of Åland and Archipelago Sea
Gulf of Finland
Gulf of Riga
Northern Baltic
South-Eastern Baltic
South-Western Baltic
The Sound
The Belts
Skagerrak
Lake Vänern and Trollhätte Canal
Inshore waters
not area bound

Sea of Bothnia

*** 19765****Chart: 532**

Sweden. Sea of Bothnia. Iggesund. Mössön. Dukarsund. Light 'Dukarsund' restored.

Expired notices: [2025:1088](#)/19622(T)

The light listed in the table below are now restored and in normal operation.

Dukarsund Q WRG 6M	61-37,367N	017-10,881E
--------------------	------------	-------------

Adm. LoL vol. C 6068

Bsp Bottenhavet S 2023/s16, s17, s47

Sjöfartsverket. Publ. 17 Dec 2025

*** 19805****Chart: 514, 522**

Sweden. Sea of Bothnia. Örnköldsvik. Ullånger. Lights 'Gnäggen' and 'Skags Flasor' restored.

Expired notices: [2025:1091](#)/19663(T)

The lights listed in the table below are now restored and in normal operation.

Gnäggen VQ(6) WRG 6s	a)	62-56,808N	018-37,154E
Skags Flasor FI(3) WRG 9s	b)	63-12,448N	019-05,171E

Adm. LoL vol. C 5951

Adm. LoL vol. C 5979

Bsp Bottenhavet N 2024/s17, s19, s22, s23

Sjöfartsverket. Publ. 17 Dec 2025

Lake Mälaren and Södertälje Canal

* 19781 (T)

Chart: 6181

Sweden. Lake Mälaren and Södertälje Canal. Södertälje. Channel 'Södertälje kanal'. The lock in Södertälje. Closed Area. January 13 - 15, 2026.

Time: January 13 - 15, 2026, 0700 - 1900 LT.

Södertälje lock is closed to all maritime traffic due to works.

Södertälje lock	59-11,57N	017-37,93E
-----------------	-----------	------------

Bsp Mälaren - Hjälmaren 2024/s30, s31

Sjöfartsverket. Publ. 16 Dec 2025

Central Baltic

*** 19682**

Chart: 6, 7, 71

Sweden. Central Baltic. Öland. Light 'Kapelludden'. Racon established.

Light 'Kapelludden' has been equipped with a racon.

Insert	racon (K)	at Light 'Kapelludden' LFI 10s	a)	56-49,17N	016-50,70E
---------------	-----------	--------------------------------	----	-----------	------------

Adm LoL. Vol. C 7270

Bsp Kalmarsund 2023/s07



Racon on light 'Kapelludden'

Sjöfartsverket. Publ. 17 Dec 2025

Southern Baltic

* 19750 (T)

Chart: 7, 742, 743, 8, 83

Sweden. Southern Baltic. S of Åhus. Ravlunda. Firing exercises. January 13 - 20, 2026.

Position: Approximately	55-46N	014-20E	Firing restriction area R34 RAVLUNDA
-------------------------	--------	---------	--------------------------------------

Restricted area R34 will be closed for traffic during stated times.

During exercise yellow quick light, VQ Y, is shown from shore.

For further information call "Ravlunda skjutfält" on VHF Ch 16/68 or call +46 (0)10 826 98 05.

Date	Hours	Range
January 13	1000 - 2200 LT	11.9 M
January 14	0900 - 1600 LT	11.9 M
January 15	1000 - 2200 LT	11.9 M
January 16	0900 - 1600 LT	11.9 M
January 17	0900 - 1600 LT	11.9 M (35,1M between 1100 - 1200 LT)
January 19 - 20	0900 - 1600 LT	11.9 M

Only firing outside Firing Practice Area shown in ENC.

Bsp Hanöbukten 2022/s06, s07, s24, s25, s26, s27, s28, s29, s30, s31, s32, s33, Bsp Sydkusten 2020/s06, s07, s29, BSP Sydkusten 2025/s06, s07, s29

Kattegat

* 19789 (T)

Chart: 923, 924

Sweden. Kattegat. W of Halmstad. Ringenäs. Firing exercise. January 13 - 18, 2026.

Position approximately	56-40,8N	012-38,6E	Firing restriction area R41A RINGENÄS
------------------------	----------	-----------	---------------------------------------

Firing will take place at R41A Ringenäs firing range during stated times. The dangerous area extends from the shore according to the table below. Two lights on shore, VQ Y, will be active during firing.

For further information call +46 (0)35 26 63 955, +46 (0)35 53 677.

Date	Time	Range
January 13 - 15	0900 - 1600 LT	2.4 M
January 16	0900 - 1300 LT	2.4 M
January 17	0900 - 1600 LT	1.7 M
January 18	0900 - 1430 LT	1.7 M

Not shown in ENC.

Bsp Västkusten S 2025/s28, s29, s30

*** 19800 (T)****Chart: 925****Sweden. Kattegat. N of Varberg. Båtafjorden. Dredging operations.**

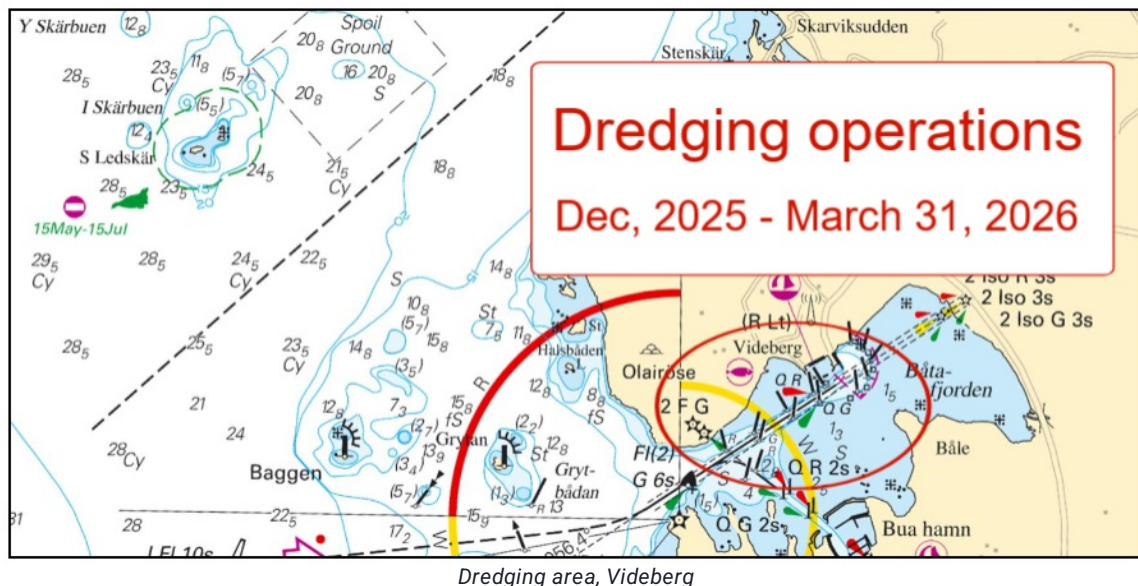
Time: Until March 31, 2026.

Ongoing dredging operations in fairway into 'Videberg'. Buoyage in fairway shall be regarded unreliable during work.
Ongoing traffic from work area to spoil ground SE of 'S Ledskär'.

Contact: Work vessel 'Camilla Høj', VHF chanel 16 or phone: +45 2373 4244.

Work area, approx. most western point	a)	57-14,7N	012-06,1E
Spoil ground	b)	57-15,4N	012-03,6E

Bsp Västkusten S 2025/s23



AFRY. Publ. 17 Dec 2025