

# Ufs

No 1079  
August 06, 2025

## Notices to Mariners, SWEDEN



NtM-Editorial office  
Swedish Maritime Administration  
601 78 Norrköping  
Sweden  
Phone: +46 771 630 605  
E-mail: [ufs@sjofartsverket.se](mailto:ufs@sjofartsverket.se)

Publisher: Patrik Wiberg  
[www.sjofartsverket.se](http://www.sjofartsverket.se)



SWEDISH MARITIME  
ADMINISTRATION

## Affected charts and Notices

Each PDF-file consists of a number of notices also accessible on [www.sjofartsverket.se/ntm](http://www.sjofartsverket.se/ntm)

Each booklet contains information on changes made to official Swedish nautical charts, as well as essential information on occurrences that pertain to safe navigation in Swedish waters.

Information available on foreign waters is limited. Ufs is not suitable for the task of keeping BA-charts and other nautical charts updated.

Note: Unintentional page breaks may occur as the PDF-file is generated automatically.

**Announcements** – General information, e.g. new chart editions, statutes/decrees from national authorities

**Notices** – Chart corrections and temporary/preliminary notices for a given geographical location

An asterisk (\*) in front of the notice number denotes that the notice is based on source material obtained from a Swedish national source and that the details stated therein affect Swedish waters.

When a notice number is followed by a '(P)' this signifies that the information contained therein is of a preliminary nature. An upcoming notice containing a chart correction will replace the former.

Similarly, when the letter 'T' is used this indicates that the notice is of a temporary nature.

In case no period of validity is stated, such a notice will be invalidated either when a new temporary notice or a chart correction replaces it.

Information in temporary and preliminary notices are generally available as an update to ENC. In case ENC updates are not available, the notice will state 'Not shown in ENC'.

Bearings are true and given clockwise from 000° to 360° and, when describing a light house beam, indicate a direction from seaward towards shore.

Note: Chartlets are intended to simplify chart correction work and are not always true to scale. Generally, these pictorials show the largest charted scale available for respective area.

The respective informant is responsible for factual content.

Please refer to more information on the use of Ufs in the official Swedish publication **Ufs A**.

## Reporting dangers and errors

All observations concerning floating aids to navigation, unlit beacons and lights, objects adrift or any other occurrence that may have a detrimental impact on the safety at sea are to be reported to Sweden Traffic at the earliest possible opportunity.

Call: Sweden Traffic  
Channel: Appropriate working channel  
Phone: +46 771 630 685 (24/7)  
E-mail: [swedentraffic@siofartsverket.se](mailto:swedentraffic@siofartsverket.se)

[illegible]

# ANNOUNCEMENTS

\* 18934 (T)

Chart: 6143, 6144, 6145, 615, 616, 6163

## Sweden. Northern Baltic. Stockholm archipelago. Sandhamn - Utö. Swimrun competition.

Time: September 1, 2025.

A swimrun competition will take place on September 1 from 'Sandhamn' to the island 'Utö'. For information about the race course, please refer to <https://otilloswimrun.com/>.

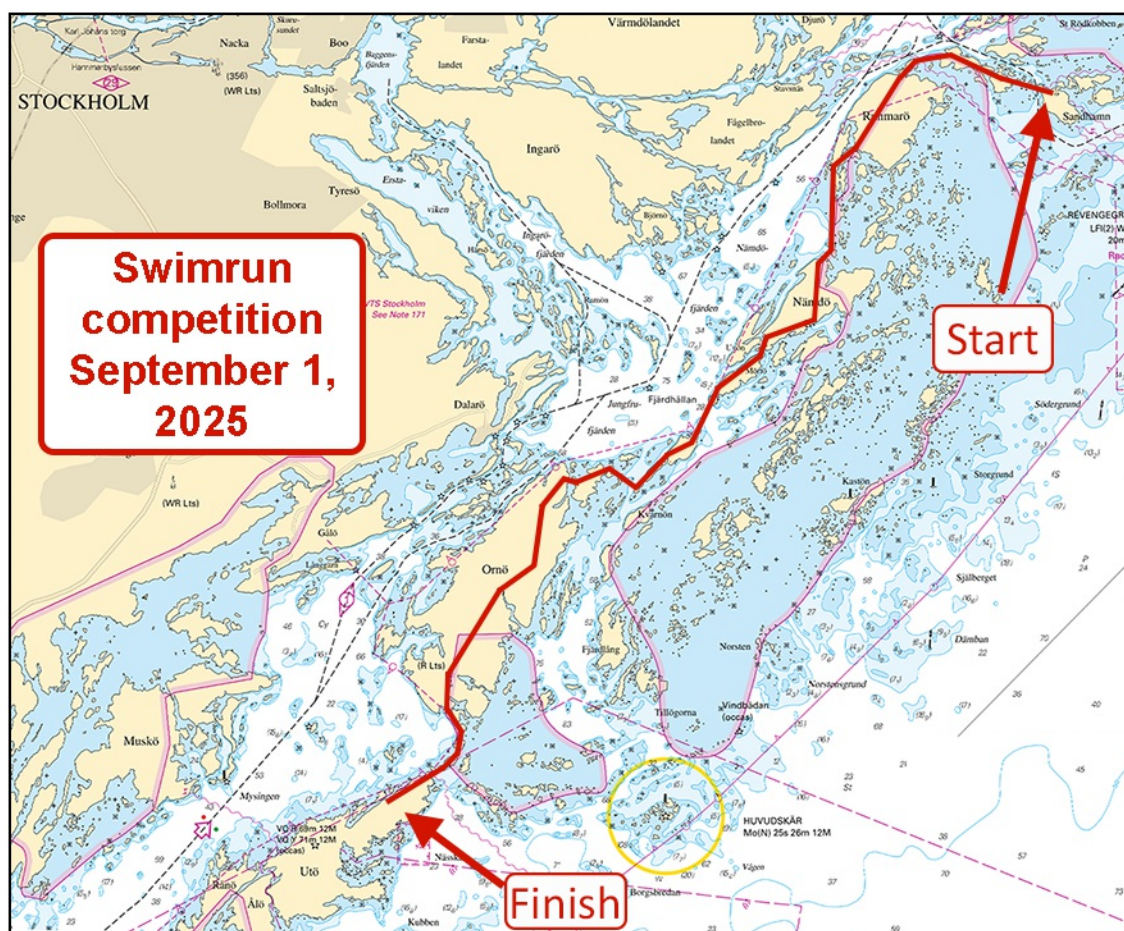
Mariners are advised to pass with caution and to respect instructions from safety crew.

Sandhamn	a)	59-17,4N	018-54,4E
Utö	b)	58-58,3N	018-20,8E

Not shown in ENC.

<https://otilloswimrun.com>

Bsp Stockholm M 2024/s24, s25, s29, s30, s31, s32, s36, s37, s38, s43, s44, s45, s47, s49, s50, Bsp Stockholm N 2024/s41, Bsp Stockholm S 2024/s06, s07, s09, s10, s11, s16, s17, s18, s34, s36, s37



Swimrun 'Ötillö', race course

# NOTICES

## Areas without notices in this booklet

The Quark
Sea of Bothnia
Sea of Åland and Archipelago Sea
Gulf of Finland
Gulf of Riga
South-Eastern Baltic
South-Western Baltic
The Sound
The Belts
Skagerrak
Lake Vänern and Trollhätte Canal
Inshore waters
not area bound

## Bay of Bothnia

**\* 19449 (T)**

**Chart: 415**

**Sweden. Bay of Bothnia. S of Piteå. Bondöfjärden. Jävreholmen. Light Lillhörun övre. Unlit.**

Time: Until August 18, 2025.

The light Lillhörun övre is being renovated and is unlit. During the renovation, the light has a temporary light character VQ Y.

Lillhörun övre Q WRG 5M	65-09,013N	021-39,545E
-------------------------	------------	-------------

Adm. LoL vol. C 5788-1

Bsp Bottenviken 2023/s36



\* 19455 (T)

Chart: 4, 41, 415, 421

Sweden. Bay of Bothnia. E of Byske. Tåme. Firing exercises. August 30 - September 5, 2025.

Firing exercises will be carried out at Tåme firing range during times listed below. During these times the charted danger area "R 58" is closed for navigation within stated distance from shore.

Warninglight lit during firing.

Further information on VHF channel 16, call Tåme skjutfält, or phone +46 (0)10 824 84 05.

Date	Time	Range from shore
August 30	1100 - 2000 LT	3.3 M
August 31	0730 - 1300 LT	3.3 M
September 1	1200 - 1730 LT	9.5 M
September 2 - 4	0830 - 1730 LT	9.5 M
September 5	0830 - 1130 LT	9.5 M

Position: Approximately	a)	64-55N	021-30E	Tåme Firing practice area
Warninglight VQ Y 10M	b)	64-58,155N	021-20,165E	

Not shown in ENC.

Bsp Bottenviken 2023/s37, s38, s39, s40, s41, s42, s44

Försvarmakten. Publ. 06 Aug 2025

Northern Baltic

\* 18933 (T)

Chart: 616, 6163

Sweden. Northern Baltic. Stockholm archipelago. Ornö - Utö. Swimrun competition.

Time: August 30, 2025.

A swimrun competition will take place on September 2 from 'Ornö' to the island 'Utö'. For information about the race course, please refer to <https://otilloswimrun.com/>.

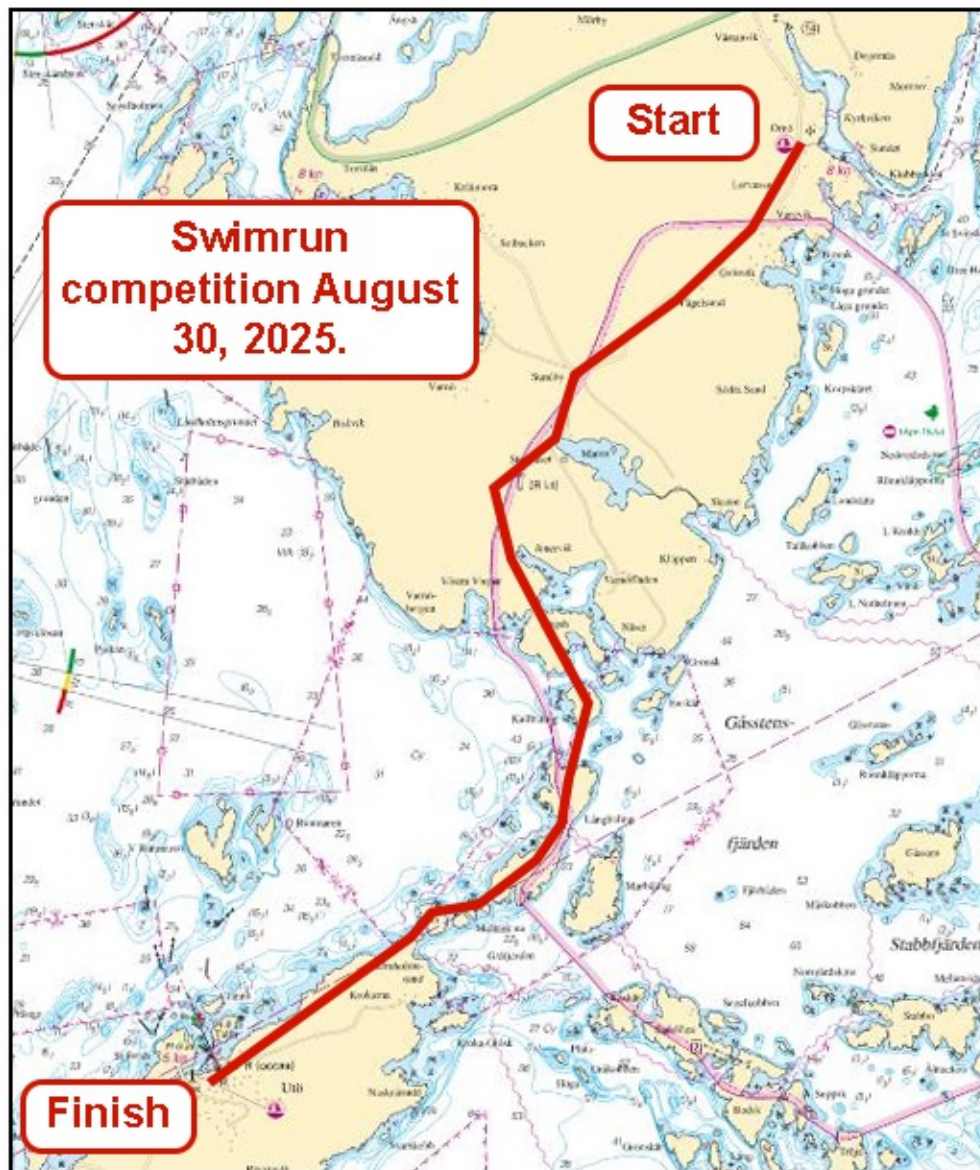
Mariners are advised to pass with caution and to respect instructions from safety crew.

Ornö	a)	59-03,1N	018-25,8E
Utö	b)	58-58,3N	018-20,8E

Not shown in ENC.

<https://otilloswimrun.com>

Bsp Stockholm S 2024/s11, s16, s18, s34, s36



Swimrun 'Ötillö', race course

Ötillö Swimrun World Series Europa. Publ. 06 Aug 2025

\* 19444 (T)

Chart: 6141, 6142

Sweden. Northern Baltic. Stockholm. Hammarbyleden. The lock "Hammarbyslussen". Closed area under the bridge "Skansbron".

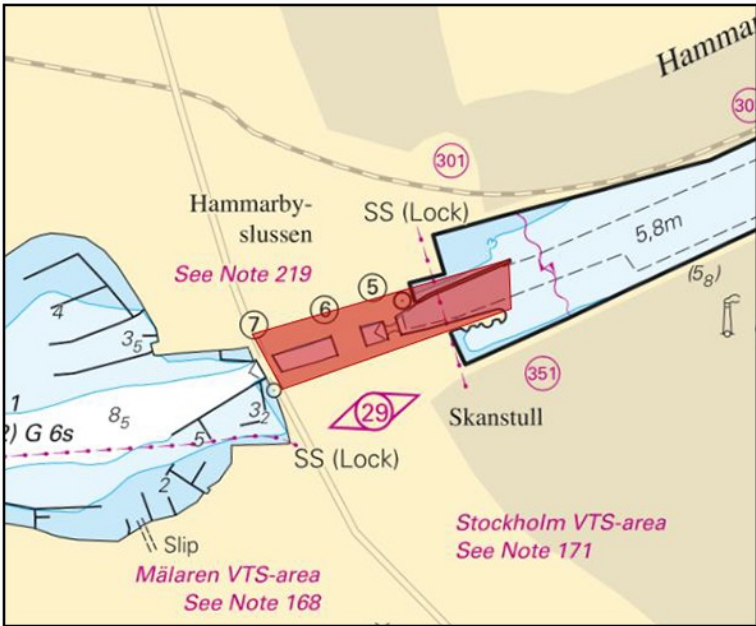
Period: September 1, 1800 LT - September 2, 0600 LT, 2025

During the above stated times, the fairway under the bridge 'Skansbron' in Hammarbyslussen will be closed for all maritime traffic.

The fairway is closed due to repair works. See table below for positions for closed area.

Bridge 'Skansbron'	a)	59-18,201N	018-04,746E	
Closed area b) - e)	b)	59-18,240N	018-04,908E	See chartlet
	c)	59-18,219N	018-04,903E	
	d)	59-18,180N	018-04,677E	
	e)	59-18,202N	018-04,656E	

Bsp Mälaren - Hjälmaren 2024/s52, Bsp Stockholm M 2024/s06, s10



Closed area at bridge 'Skansbron' in Stockholm



# Lake Mälaren and Södertälje Canal

\* 19125 (T)

Chart: 6141, 6142

**Sweden. Lake Mälaren and Södertälje Canal. Stockholm. Riddarfjärden. Norr Mälarstrand. Sailing race.**

Time: August 28 - 31 2025.

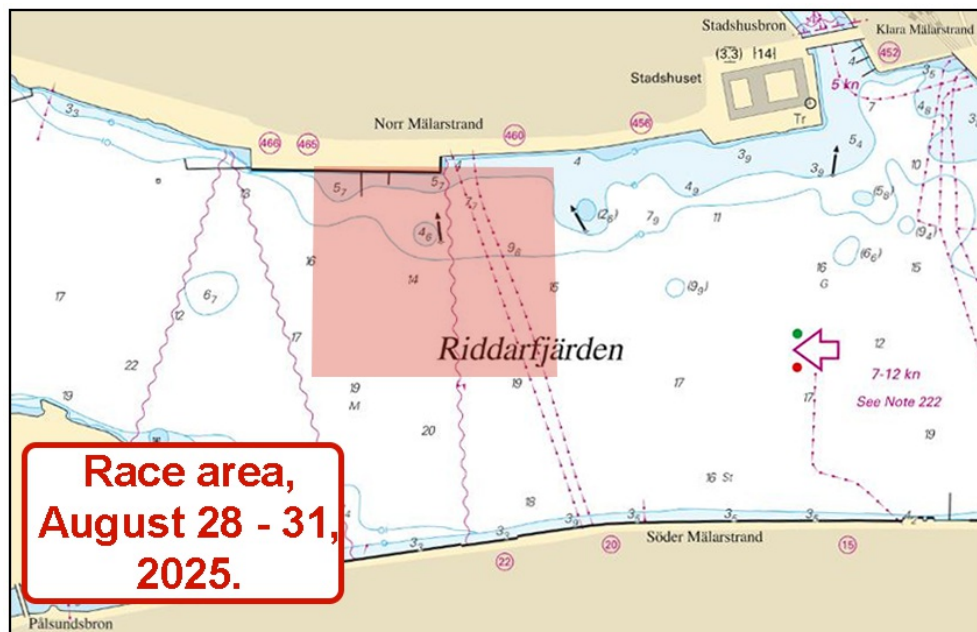
Sailing race at Riddarfjärden in Stockholm.

Passage past the event can take place south of the competition area.

Seafarers are requested to follow instructions from race management and safety boats in the area.

Race area approximately a) - d)	a)	59-19,577N	018-02,550E
	b)	59-19,574N	018-02,933E
	c)	59-19,399N	018-02,940E
	d)	59-19,406N	018-02,545E

Bsp Mälaren - Hjälmaren 2024/s51, Bsp Stockholm M 2024/s10



Sailing race. August 28 - 31

GSYS. Publ. 06 Aug 2025

## Central Baltic

**\* 19454 (T)**

**Chart: 62, 71, 731**

**Sweden. Central Baltic. Gotland. Stora Karlsö. Light ST KARLSÖ. Sectors. Range. Works.**

Time: Until further notice

The light ST KARLSÖ is being rebuilt.

During the reconstruction, a temporary all-round white light has been established. The temporary light has the same character as the regular light but has approximately half the range.

Mariners are advised to note that the light has no sectoring during the renovation.

Light ST KARLSÖ LFI (2) WR 12s	57-17,38N	017-57,52E
--------------------------------	-----------	------------

Adm. LoL vol. C 7224

Bsp Ostkusten 2023/s64, Bsp Ostkusten 2025/s64

*Sjöfartsverket. Publ. 06 Aug 2025*

## Southern Baltic

**\* 19309 (T)**

**Chart: 742, 743, 83**

**Sweden. Southern Baltic. Approach to Åhus. Rinkaby. Firing exercises. August 25 - 27, 2025.**

Position: Approximately	55-56N	014-22E	Firing restriction area R38A RINKABY
-------------------------	--------	---------	--------------------------------------

The restriction area R38A will be closed for vessels during times given in the table.

During exercise yellow quick light, VQ Y, is shown from shore.

For further information call: "Rinkaby skjutfält" on VHF channel 16/18 or call +46 (0)31 69 28 05.

Date	Hours	Range
August 25	1000 - 1700 LT	2.5 M
August 26 - 27	0900 - 1700 LT	2.5 M

Not shown in ENC.

Bsp Hanöbukten 2022/s24, s25, s26, s28

*Försvarsmakten. Publ. 06 Aug 2025*

# Kattegat

\* 19447 (T)

Chart: 923, 924

**Sweden. Kattegat. W of Halmstad. Ringenäs. Firing exercise. August 11 - 13, 2025.**

Position approximately	56-40,8N	012-38,6E	Firing restriction area R41A RINGENÄS
------------------------	----------	-----------	---------------------------------------

Firing will take place at R41A Ringenäs firing range during stated times. The dangerous area extends from the shore according to the table below. Two lights on shore, VQ Y, will be active during firing.

For further information call +46 (0)35 266 39 55, +46 (0)35 536 77.

Date	Time	Range
August 11 - 13	0800 - 1600 LT	1.7 M

Not shown in ENC.

Bsp Västskusten S 2025/s28, s29, s30

*Försvarmakten. Publ. 06 Aug 2025*