

Ufs

No 1077

July 23, 2025

Notices to Mariners, SWEDEN



NtM-Editorial office
Swedish Maritime Administration
601 78 Norrköping
Sweden
Phone: +46 771 630 605
E-mail: ufs@sjofartsverket.se

Publisher: Patrik Wiberg
www.sjofartsverket.se



**SWEDISH MARITIME
ADMINISTRATION**

Affected charts and Notices

Each PDF-file consists of a number of notices also accessible on www.sjofartsverket.se/ntm

Each booklet contains information on changes made to official Swedish nautical charts, as well as essential information on occurrences that pertain to safe navigation in Swedish waters.

Information available on foreign waters is limited. Ufs is not suitable for the task of keeping BA-charts and other nautical charts updated.

Note: Unintentional page breaks may occur as the PDF-file is generated automatically.

Announcements – General information, e.g. new chart editions, statutes/decrees from national authorities

Notices – Chart corrections and temporary/preliminary notices for a given geographical location

An asterisk (*) in front of the notice number denotes that the notice is based on source material obtained from a Swedish national source and that the details stated therein affect Swedish waters.

When a notice number is followed by a '(P)' this signifies that the information contained therein is of a preliminary nature. An upcoming notice containing a chart correction will replace the former.

Similarly, when the letter '(T)' is used this indicates that the notice is of a temporary nature.

In case no period of validity is stated, such a notice will be invalidated either when a new temporary notice or a chart correction replaces it.

Information in temporary and preliminary notices are generally available as an update to ENC. In case ENC updates are not available, the notice will state 'Not shown in ENC'.

Bearings are true and given clockwise from 000° to 360° and, when describing a light house beam, indicate a direction from seaward towards shore.

Note: Chartlets are intended to simplify chart correction work and are not always true to scale. Generally, these pictorials show the largest charted scale available for respective area.

The respective informant is responsible for factual content.

Please refer to more information on the use of Ufs in the official Swedish publication **Ufs A**.

Reporting dangers and errors

All observations concerning floating aids to navigation, unlit beacons and lights, objects adrift or any other occurrence that may have a detrimental impact on the safety at sea are to be reported to Sweden Traffic at the earliest possible opportunity.

Call: Sweden Traffic
Channel: Appropriate working channel
Phone: +46 771 630 685 (24/7)
E-mail: swedentraffic@siofartsverket.se

[illegible]

ANNOUNCEMENTS

No Announcements in this booklet.

NOTICES

Areas without notices in this booklet

Bay of Bothnia
The Quark
Sea of Bothnia
Sea of Åland and Archipelago Sea
Gulf of Finland
Gulf of Riga
Northern Baltic
South-Eastern Baltic
Southern Baltic
South-Western Baltic
The Sound
The Belts
Kattegat
Lake Vänern and Trollhätte Canal
Inshore waters
not area bound

Lake Mälaren and Södertälje Canal

* 19442 (T)

Chart: 113, 1133

Sweden. Lake Mälaren and Södertälje Canal. Västerås. Västeråsfjärden. Swimmers crossing fairway.

Time: August 16, 2025

Swimrun race in the area around Västerås.

The race crosses fairways at two places. Between the islands 'Kedjeön' and 'Aggarön', and between 'Aggarön' and north to the mainland.

For more details about the race. Please visit: <https://vasterasswimrun.se/>

'Kedjeön'	a)	59-30,30N	016-40,52E
'Aggarön'	b)	59-30,35N	016-42,33E
Swimmers in fairway at position c) and d)	c)	59-30,35N	016-41,07E
	d)	59-30,88N	016-42,33E

Not shown in ENC.
<https://vasterasswimrun.se/>

Bsp Mälaren - Hjälmarens 2024/s21, s56, s58

*** 19443****Chart: 113, 1131**

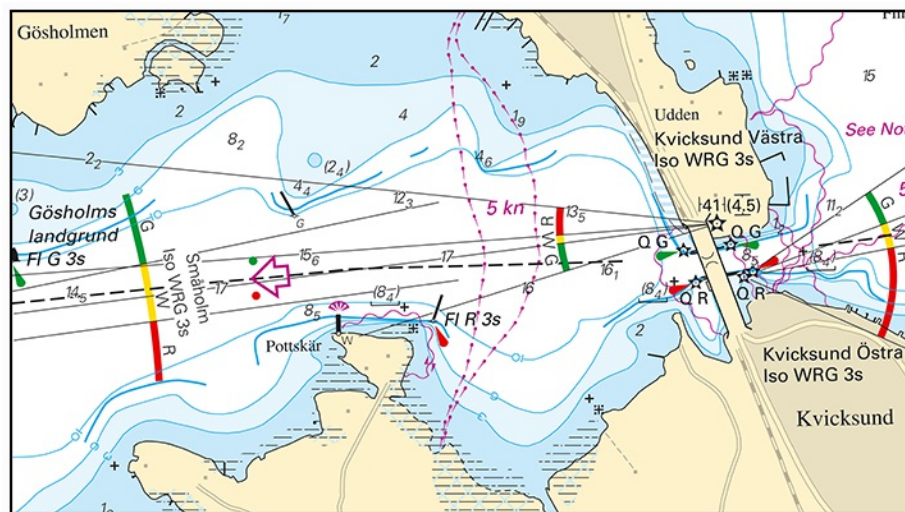
Sweden. Lake Mälaren and Södertälje Canal. Lake Mälaren. Kvicksund. Light 'Kvicksund Västra'. Sectors.

	Light 'Kvicksund Västra' Iso WRG 3s	59-27,194N	016-19,176E
Insert	sectors according to list below		

Bearing Sector

073,6° - 083,8°	G
083,8° - 086,9°	W
086,9° - 096,9°	R
096,9° - 073,6°	Dk

Bsp Mälaren - Hjälmaren 2024/s19, s20, s57



Light 'Kvicksund Västra' with new sectors

Sjöfartsverket. Publ. 23 Jul 2025

Central Baltic

* 19440 (T)

Chart: 62, 71

Sweden. Central Baltic. Gotland. Klintehamn. Hydrographic survey. Depths less than charted.

Time: Until further notice

Depths less than charted have been found during a hydrographic survey i Klintehamn.

Affected depths are presented in the table below.

For more information regarding current restrictions and contact, please visit:

www.sjofartsverket.se/en/services/pilotage/Pilot-area-Kalmar/

Depth according to chart Surveyed depth

Swept area 6,7 (2017)	6,2 m	a)	57-23,25N	018-10,90E	Quay 4 'Donnerkajen'
Swept area 5,9 (2017)	5,5 m	b)	57-23,30N	018-11,20E	Quay 3 'Lanthamnskajen'
Swept area 4,9 (2017)	4,6 m	c)	57-23,31N	018-11,34E	Quay 1 and 2 'Betkajen'

Bsp Ostkusten 2023/s64, Bsp Ostkusten 2025/s64

Sjöfartsverket. Publ. 18 Jul 2025

Skagerrak

* 19441 (T)

Chart: 932

Sweden. Skagerrak. Orust. Tjörn. Stigfjorden. Floating obstacle. Danger to navigation.

Time: Until further notice

Floating obstacles from a marine farm have been reported in Stigfjorden.

Mariners are requested to maintain a sharp lookout when navigating in the area.

Stigfjorden	58-04,70N	011-36,30E
-------------	-----------	------------

Not shown in ENC.

BSP Västkusten N 2025/s23, s24, s25, Bsp Västkusten S 2025/s11, s12, s13

Sjöfartsverket. Publ. 22 Jul 2025