

# Ufs

## No 1064

4/23/2025

### Notices to Mariners, SWEDEN Swedish Maritime Administration



#### Areas in Swedish Notices to Mariners



**SWEDISH MARITIME  
ADMINISTRATION**

NtM-Editorial office  
Swedish Maritime Administration  
601 78 Norrköping

Sweden  
Tel: 0771 630 605  
E-mail: [ufs@sjofartsverket.se](mailto:ufs@sjofartsverket.se)

Publisher:  
Hydrographer Patrik Wiberg

[www.sjofartsverket.se](http://www.sjofartsverket.se)

## Affected charts and Notices

Each PDF-file consists of a number of notices also accessible on [www.sjofartsverket.se/ntm](http://www.sjofartsverket.se/ntm)

Each booklet contains information on changes made to official Swedish nautical charts, as well as essential information on occurrences that pertain to safe navigation in Swedish waters.

Information available on foreign waters is limited. Ufs is not suitable for the task of keeping BA-charts and other nautical charts updated.

Note: Unintentional page breaks may occur as the PDF-file is generated automatically.

**Announcements** – General information, e.g. new chart editions, statutes/decrees from national authorities

**Notices** – Chart corrections and temporary/preliminary notices for a given geographical location

An asterisk (\*) in front of the notice number denotes that the notice is based on source material obtained from a Swedish national source and that the details stated therein affect Swedish waters.

When a notice number is followed by a '(P)' this signifies that the information contained therein is of a preliminary nature. An upcoming notice containing a chart correction will replace the former.

Similarly, when the letter 'T' is used this indicates that the notice is of a temporary nature.

In case no period of validity is stated, such a notice will be invalidated either when a new temporary notice or a chart correction replaces it.

Information in temporary and preliminary notices are generally available as an update to ENC. In case ENC updates are not available, the notice will state 'Not shown in ENC'.

Bearings are true and given clockwise from 000° to 360° and, when describing a light house beam, indicate a direction from seaward towards shore.

Note: Chartlets are intended to simplify chart correction work and are not always true to scale. Generally, these pictorials show the largest charted scale available for respective area.

The respective informant is responsible for factual content.

Please refer to more information on the use of Ufs in the official Swedish publication **Ufs A**.

## Reporting dangers and errors

All observations concerning floating aids to navigation, unlit beacons and lights, objects adrift or any other occurrence that may have a detrimental impact on the safety at sea are to be reported to Sweden Traffic at the earliest possible opportunity.

Call: Sweden Traffic

Channel: Appropriate working channel

Phone: +46 771 630 685 (24/7)

E-mail: [swedentraffic@sjofartsverket.se](mailto:swedentraffic@sjofartsverket.se)

[illegible]

# ANNOUNCEMENTS

## \* 18953 (T)

### **Sweden. not area bound. Wintertime recommendations for maritime traffic for the prevention of ice-skating accidents etc.**

The following recommendations have been drafted in order to prevent accidents for ice-skaters and others who make use of ice-covered waters for transportation and/or recreation due to ice has been broken.

The guidelines are also intended to limit the risk of persons being cut-off from the ability of reaching shore safely.

#### **Follow the fairways and pay attention**

Ships should, when transiting ice-covered waters, as far as possible, make use of charted fairways or the inofficial routes used by local passenger boats and islanders.

If you see persons on the ice in vicinity of your planned route you should ensure that ice is not broken up at their location or that a channel cut through the ice does not prevent these people from reaching shore safely.

#### **Speed restrictions and bans on breaking ice**

In order to ensure that ice is not broken - which would render it impossible to be used for transportation - waters may be closed to navigation or speed restrictions may apply at certain locations during the winter. Information on such restrictions will be published in swedish NtM.

#### **Cautions be considered before breaking a channel through the ice**

Transiting ice-covered waters near shore and in archipelagos require detailed route planning. If possible, follow the fairways as mentioned or existing channels through the ice. Before breaking a new channel you should ascertain local conditions and ensure that you are not cutting off connection to the mainland for islanders.

#### **Inform the public before breaking a new channel through the ice**

Radio Sweden P4 - Sveriges Radio P4 - Trafikredaktionen

Send an e-mail to [trafikredaktionen@sverigesradio.se](mailto:trafikredaktionen@sverigesradio.se) with information on when and where the ice will or has been broken. State detailed information about the location, name of the vessel and contact details.

Follow up by calling +46 20 999 444 or +46 8 784 50 00, making reference to your e-mail.

Information will be broadcast on channel P4 during weekdays 0600-1800 LT and will additionally be published on the website <https://sverigesradio.se/sida/trafiken/>

Skridskonätet

Send an e-mail to [fartyg@skridsko.net](mailto:fartyg@skridsko.net). The contents of the e-mail will automatically be published on the website [www.skridsko.net/mail/fartyg/](http://www.skridsko.net/mail/fartyg/). The e-mail should contain the following information:

Subject: Location of the channel through the ice, ex. "Mälaren. Lövholmen-Stäket."

Text: Where/when when a channel will be broken or an existing channel through the ice has been observed. If possible, enclose a map delineating the area.

Ufs A, chapter 6.5

# NOTICES

## Areas without notices in this booklet

Bay of Bothnia
The Quark
Sea of Bothnia
Sea of Åland and Archipelago Sea
Gulf of Finland
Gulf of Riga
Lake Mälaren and Södertälje Canal
South-Eastern Baltic
South-Western Baltic
The Sound
The Belts
Skagerrak
Inshore waters
not area bound

## Northern Baltic

**\* 19192**

**Chart: 616, 6162**

**Sweden. Northern Baltic. NE of Nynäshamn. S of Muskö. Måsknuvarna. Ballrickshällen. Beacons are withdrawn.**

Delete	beacon	a)	58-57,933N	018-05,574E
Delete	coloured or white mark	b)	58-57,896N	018-05,576E
Delete	beacon	c)	58-57,424N	018-06,858E
Delete	beacon	d)	58-57,455N	018-06,872E

Bsp Stockholm S 2024/s13, s20, s34, s35

*Transportstyrelsen. Publ. 23 Apr 2025*

**\* 19234 (T)**

**Chart: 6142**

**Sweden. Northern Baltic. N of Vaxholm. Hästholmen. Kodjupet. Light buoy temporarily replaced.**

Period.: Until autumn 2025.

The light buoy in the position according to the table below, is temporarily replaced by an unlit port-hand spar buoy.

Port-hand light buoy	59-25,087N	018-20,722E
----------------------	------------	-------------

Bsp Stockholm M 2024/s14, s46, Bsp Stockholm N 2024/s42

*Sjöfartsverket. Publ. 22 Apr 2025*

## Central Baltic

**\* 19204 (T)**

**Chart: 71, 712**

**Sweden. Central Baltic. Kalmarsund. Kalmar. Bridge 'Ölandsbron'. Main passage. Temporarily reduced vertical clearance.**

Period: April 24, 2100 LT - April 25, 0500 LT, 2025.

During the period stated above, the vertical clearance of the bridge 'Ölandsbron', the part over the fairway, is reduced from 34,9 to 32.9 meters.

Contact: Personnel on site, tel. +46 (0)76 131 53 98 and +46 (0)70 672 62 56.

Bridge 'Ölandsbron' main passage	56-40,737N	016-23,723E
----------------------------------	------------	-------------

Bsp Kalmarsund 2023/s25, s26, s34

Sweco. Publ. 23 Apr 2025

---

\* 19229 (T)

Chart: 731

## Sweden. Central Baltic. Gotland. Visby. Yttre hamnen. Dredging works. Extended area.

Expired notices: [2025:1062/19194\(T\)](#)

Period: April 7 -30, 2025

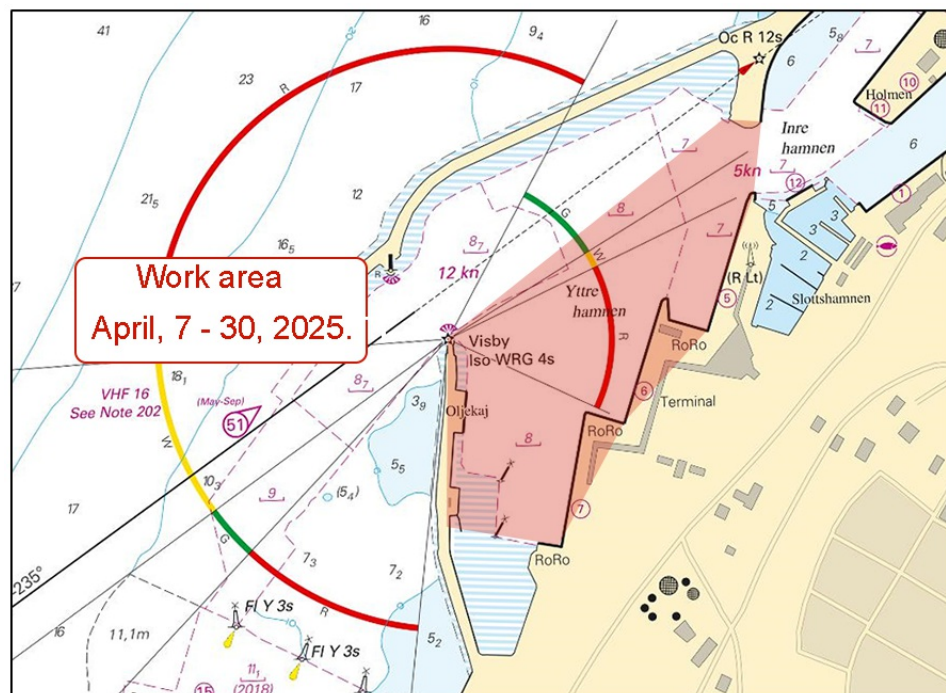
During the period stated above, dredging work will be carried out at quay 5, 6 and 7, at the oil quay and at the passage to 'Inre hamnen'. Mariners are advised to navigate with caution.

The following units will be involved in the work: Tug "Ran" with callsign SFE-2664 and dredger "Tringa" with callsign SDLK.

Units participating in the work can be contacted on VHF channel 16

Quay 5	a)	57-38,104N	018-16,802E
Quay 6	b)	57-38,034N	018-16,682E
Quay 7	c)	57-37,943N	018-16,588E
Oil quay 'Oljekaj'	d)	57-38,019N	018-16,424E
Passage to Inre hamnen.	e)	57-38,212N	018-16,824E

Bsp Ostkusten 2023/s64, Bsp Ostkusten 2025/s64



Region Gotland. Publ. 22 Apr 2025

## Southern Baltic

**\* 19226 (T)**

**Chart: 7, 742, 743, 8, 83**

**Sweden. Southern Baltic. S of Åhus. Ravlunda. Firing exercises. May 19 - 22, 2025.**

Position: Approximately	55-46N	014-20E	Firing restriction area R34 RAVLUNDA
-------------------------	--------	---------	--------------------------------------

Restricted area R34 will be closed for traffic during stated times.

During exercise yellow quick light, VQ Y, is shown from shore.

For further information call "Ravlunda skjutfält" on VHF Ch 16/68 or call +46 (0)31 69 28 05.

Date	Hours	Range
------	-------	-------

May 19	1300 - 2200 LT	6.8 M
May 20 -22	0900 - 2200 LT	6.8 M

Not shown in ENC.

Bsp Hanöbukten 2022/s06, s07, s24, s25, s26, s27, s28, s29, s30, s31, s32, s33, Bsp Sydkusten 2020/s06, s07, s29, BSP Sydkusten 2025/s06, s07, s29

*Försvarmakten. Publ. 23 Apr 2025*

## Kattegat

**\* 19235 (T)**

**Chart: 931, 9312, 9313**

**Sweden. Kattegat. Gothenburg archipelago. W of Känsö. W of Styrsö. Firing exercise. May 6 - 8, 2025.**

Expired notices: [2025:1063](#)/19201(T)

Firing exercises with live ammunition will be carried out in Gothenburg archipelago firing range.

The exercise area will be given in the table below and marked in the chartlet.

Anchorage area "C" is affected, the risk area covers anchorage area C. The affected anchorage area shall not be used between 0730 - 2000 (LT) during each exercise day.

The fairway is affected by the risk area. Mariners are advised to maintain contact with VTS Gothenburg.

Information during practice times VHF channel 16 or phone +46 (0)70 786 65 71.

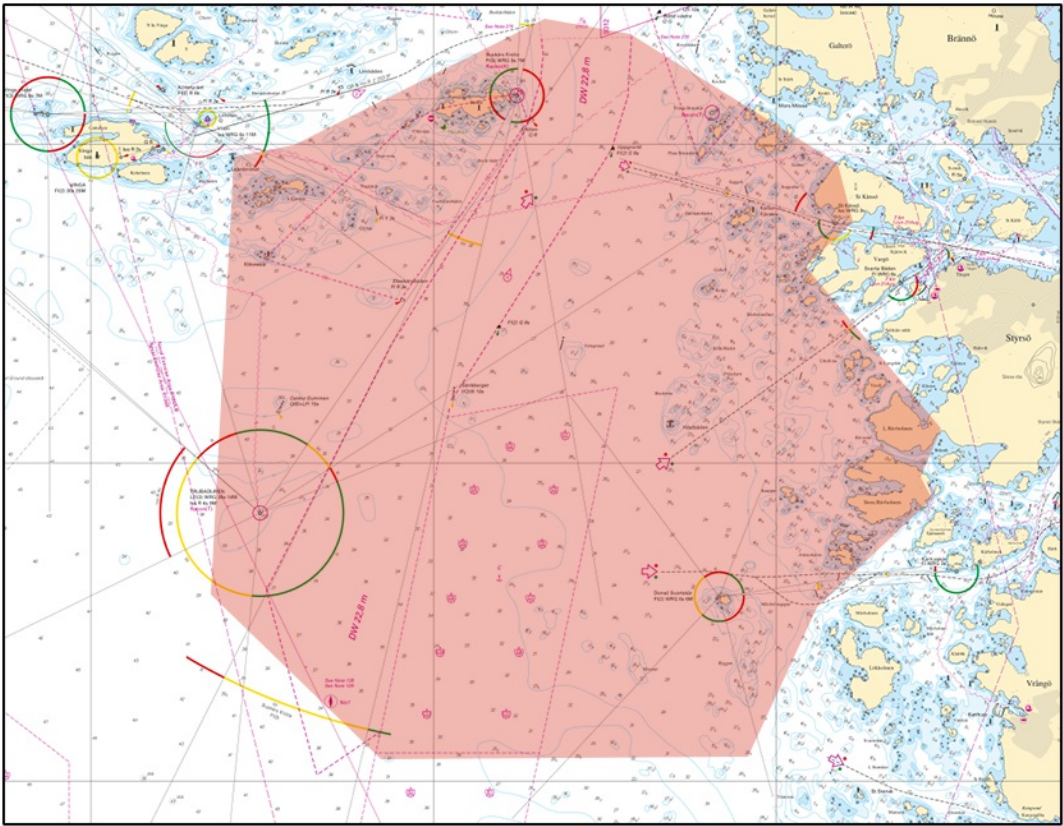


Risk area approx. between a) - h)	a)	57-38,654N	011-42,301E	See chartlet
	b)	57-36,394N	011-46,096E	
	c)	57-35,762N	011-46,115E	
	d)	57-35,104N	011-44,516E	
	e)	57-34,054N	011-44,496E	
	f)	57-34,202N	011-37,329E	
	g)	57-38,006N	011-37,760E	
	h)	57-38,687N	011-41,247E	

DateTime

May 6 - 8	0800 - 2000 (LT)
-----------	------------------

Bsp Västkusten S 2023/s18, s19, s44, s45, s46, s48, s49, s50, s53, Bsp Västkusten S 2025/s18, s19, s44, s45, s46, s48, s49, s50, s53



Fire exercise area

Försvarsmakten. Publ. 23 Apr 2025

Lake Vänern and Trollhätte Canal

**\* 19208 (T)****Chart: 1352****Sweden. Lake Vänern and Trollhätte Canal. Göta älv. Nödinge. Nol. Fairway closed.**

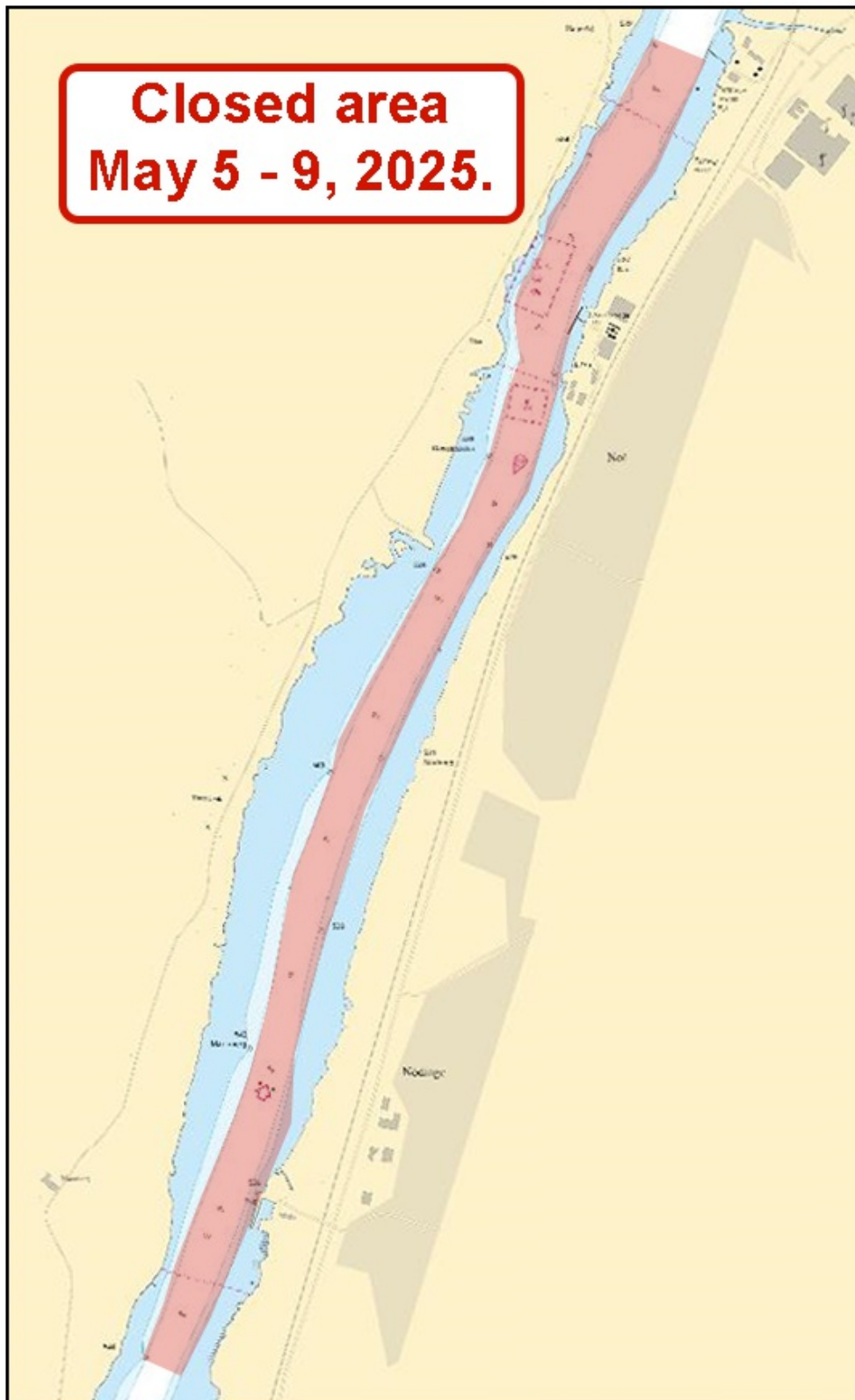
Period: May 5, 0600 LT - May 9, 1800 LT, 2025.

During the period stated above, the fairway at Nödinge and Nol will be closed to all maritime traffic. The closure is due to work in the fairway.

The fairway is closed between fairway markings 544 and 532. See table below for the northernmost and southernmost positions for the closure.

Northernmost position	a)	57-55,348N	012-03,592E
Southernmost position	b)	57-53,165N	012-02,045E

Trollhätte kanal - Dalslands kanal 2020/s10, s11



Closed area at Nödinge and Nol