

Notices to Mariners, SWEDEN Swedish Maritime Administration



NtM-Editorial office
Swedish Maritime Administration
601 78 Norrköping

Sweden
Tel: 0771 630 605
E-mail: ufs@sjofartsverket.se

Publisher:
Hydrographer Patrik Wiberg

ANNOUNCEMENTS

* 18953 (T)

Sweden. not area bound. Wintertime recommendations for maritime traffic for the prevention of ice-skating accidents etc.

The following recommendations have been drafted in order to prevent accidents for ice-skaters and others who make use of ice-covered waters for transportation and/or recreation due to ice has been broken.

The guidelines are also intended to limit the risk of persons being cut-off from the ability of reaching shore safely.

Follow the fairways and pay attention

Ships should, when transiting ice-covered waters, as far as possible, make use of charted fairways or the inofficial routes used by local passenger boats and islanders.

If you see persons on the ice in vicinity of your planned route you should ensure that ice is not broken up at their location or that a channel cut through the ice does not prevent these people from reaching shore safely.

Speed restrictions and bans on breaking ice

In order to ensure that ice is not broken - which would render it impossible to be used for transportation - waters may be closed to navigation or speed restrictions may apply at certain locations during the winter. Information on such restrictions will be published in swedish NtM.

Cautions be considered before breaking a channel through the ice

Transiting ice-covered waters near shore and in archipelagos require detailed route planning. If possible, follow the fairways as mentioned or existing channels through the ice. Before breaking a new channel you should ascertain local conditions and ensure that you are not cutting off connection to the mainland for islanders.

Inform the public before breaking a new channel through the ice

Radio Sweden P4 - Sveriges Radio P4 - Trafikredaktionen

Send an e-mail to trafikredaktionen@sverigesradio.se with information on when and where the ice will or has been broken. State detailed information about the location, name of the vessel and contact details.

Follow up by calling +46 20 999 444 or +46 8 784 50 00, making reference to your e-mail.

Information will be broadcast on channel P4 during weekdays 0600-1800 LT and will additionally be published on the website <https://sverigesradio.se/sida/trafiken/>

Skridskonätet

Send an e-mail to fartyg@skridsko.net. The contents of the e-mail will automatically be published on the website www.skridsko.net/mail/fartyg/. The e-mail should contain the following information:

Subject: Location of the channel through the ice, ex. "Mälaren. Lövholmen-Stäket."

Text: Where/when when a channel will be broken or an existing channel through the ice has been observed. If possible, enclose a map delineating the area.

Ufs A, chapter 6.5

*** 19127****Chart: 4101, 414****Sweden. Bay of Bothnia. Luleå. Approach to Port of Luleå. Temporary reduced maximum draught.**

Time: April 10 - June 20, 2025.

The maximum permissible draught for vessels approaching Port of Luleå through Sandöleden is reduced to 10,25 metres.

For more information regarding restrictions and guidelines, please visit: www.sjofartsverket.se/en

Fairway between a) - b)	a)	65-21N	022-47E
	b)	65-34N	022-10E

<https://www.sjofartsverket.se/en/services/pilotage/pilot-area-lulea/>

Bsp Bottenviken 2023/s24, s25, s26, s27, s57, s58, s60, s61

Sjöfartsverket. Publ. 26 Mar 2025

*** 19142****Sweden. Northern Baltic. Lake Mälaren and Södertälje Canal. Swedish Coast Radio network. Stockholm. Nacka. Change of VHF channel from 26 to 23.**

On May 1, 2025, VHF traffic channel 26 will be replaced by channel 23 at the Nacka transmitter in the Swedish coastal radio network.

This affects how Maritime Safety Information (MSI) is received in the area.

MSI includes Navigational warnings, weather warnings and forecasts.

The change will be included in the next version of Ufs-A, General information.

Replace	channel 26 with 23 for Nacka, Swedish Coast Radio in Ufs A, General information	59-17,8N	018-10,5E
----------------	---	----------	-----------

<https://ufs.sjofartsverket.se/en/>

https://ufs.sjofartsverket.se/pdf/Ufs_A_en.pdf

Svensk kustradio Swedish Coast Radio

SWEDEN TRAFFIC MMSI: 002653500
 Utsändning av MSI på VHF och MF
 Transmissions of MSI on VHF and MF

Sändning Transmission	Tid / Time (UTC)					
	0200	0600	1000	1400	1800	2200
Nav. väm. Nav. Warn.						
Trafiklista* Traffic list*	0200	0600	1000	1400	1800	2200
Väder Weather		0600			1800	

STOCKHOLMRADIO MMSI: 002652000
Kustväder Coastal weather (only in Swedish)
 sänds på VHF 15 juni - 15 augusti enligt följande:

Kuststräcka	Lokal tid
Haparanda-Örskär	0830 1630
Örskär-Landsort, Mälaren/Hjälaren	0845 1645
Landsort-Utklippan, Gotland	0900 1700
Utklippan-Hallands Väderö	0915 1715
Hallands Väderö-Nordkoster, Vänern/Vättern	0930 1730

* Trafiklistan avser Stockholmradios samtal till fartyg

● VHF station
 ○ MF station
 Tx = shore station transmits
 Rx = shore station receives
 DSC = Digital Selective Calling

Sjöfartsverket
2022-11-11

Swedish coast radio. Nacka transmitter. Channel change from 26 to 23

*** 19160****Chart: 921****Sweden. The Sound. Falsterbo. Falsterbokanalen. Bridge opening times.**

Bridge "Falsterbobron"	55-24,60N	012-56,08E
------------------------	-----------	------------

Period: From April 15, 2025.

New opening times for bridge over the canal "Falsterbokanalen", applies to the period April 15 – September 30.

For further information visit the Swedish Maritime Administration website, www.sjofartsverket.se/en/falsterbo-kanal

Date	Opening times
------	---------------

April 15 - September 30	0600, 0900, 1100, 1300, 1500, 1800, 2000, 2200 LT
-------------------------	---

Bsp Sydkusten 2020/s21, s25, BSP Sydkusten 2025/s21, s25

Trafikverket Södra regionen. Publ. 26 Mar 2025

*** 19168****Chart: 111, 113, 1131, 1133****Sweden. not area bound. New print of charts. New edition of chart 111, 113, 1131 and 1133.**

A new edition of the following nautical charts are available from March 2025:

Chart Edition

111	16.0 NEW EDITION
113	14.0 NEW EDITION
1131	13.0 NEW EDITION
1133	6.0 NEW EDITION

A NEW EDITION is a print of an existing chart, containing changes significant to navigation which are not possible to fully describe in the Swedish NtM.

<https://ufs.sjofartsverket.se/en/Current/Products>

Sjöfartsverket. Publ. 26 Mar 2025

NOTICES

Areas without notices in this booklet

Bay of Bothnia
The Quark
Sea of Åland and Archipelago Sea
Gulf of Finland
Gulf of Riga
Central Baltic
South-Eastern Baltic
South-Western Baltic
The Sound
The Belts
Skagerrak
not area bound

Sea of Bothnia

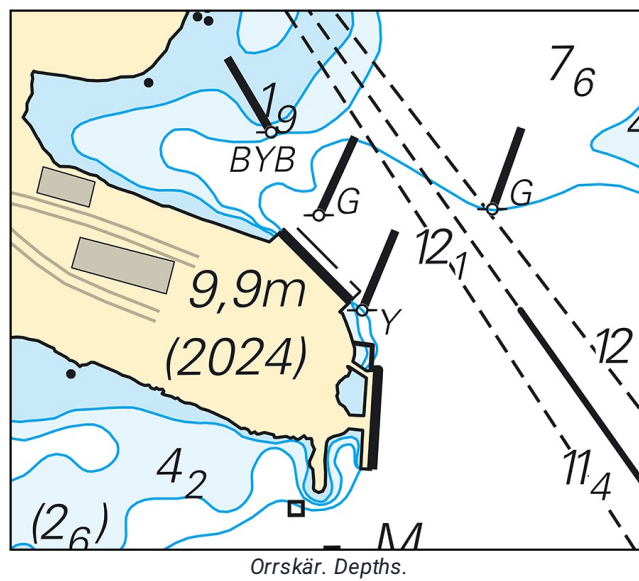
* 19166

Chart: 533, 5331

Sweden. Sea of Bothnia. Orrskär. Depths.

Insert	depth at quay 9,9 m (2024)	a)	61-12,700N	017-09,740E
Insert	dredged area	b)	61-12,731N	017-09,814E

Bsp Bottenhavet S 2023/s22, s37



Sjöfartsverket. Publ. 26 Mar 2025

Northern Baltic

*** 19156 (T)**

Chart: 6141, 6142

Sweden. Northern Baltic. Stockholm. Södermalm. Hammarbyleden. Lock 'Hammarbyslussen'. Diving operations.

Period: April 8 - 10. Each day between 1900 - 0200 LT

Diving operations will be carried out in the lock which may cause delays. Divers will adjust their work according to the traffic flow. Time needed for divers to abort work before operation of the lock is safe is estimated to be 15 to 30 minutes.

Contact: VTS Stockholm, VHF channel 73.

Lock 'Hammarbyslussen'	59-18,20N	018-04,75E
------------------------	-----------	------------

Not shown in ENC.

Bsp Mälaren - Hjälmarén 2024/s52, Bsp Stockholm M 2024/s06, s10

Stockholms hamnar. Publ. 26 Mar 2025

Lake Mälaren and Södertälje Canal

* 19119 (T)

Chart: 1131

Sweden. Lake Mälaren and Södertälje Canal. Lake "Mälaren". Kvicksund. Udden. Bridge 'Kvicksundsbron'. Bridge will not open May 4 - 5, 2025.

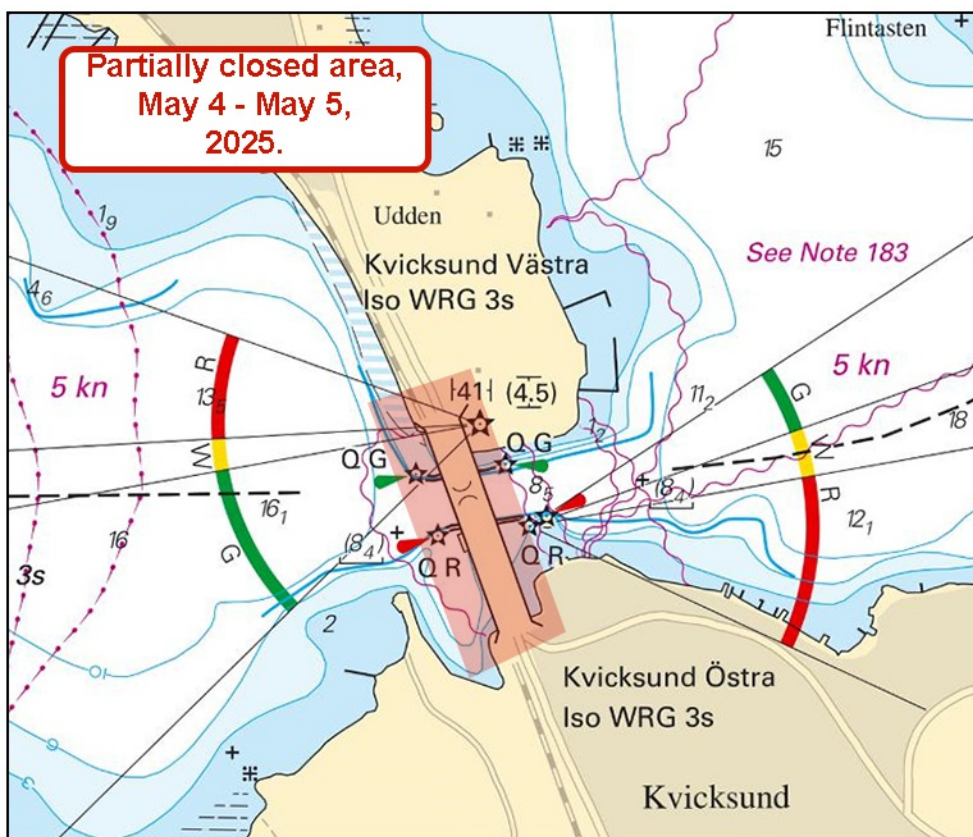
Period: May 4, 2220 LT - May 5, 0320 LT, 2025.

During the period stated above, the fairway that passes under the bridge "Kvicksundsbron" is closed for maritime traffic that require a bridge opening when passing. The extent of the area is shown in the table below.

Maritime traffic that does not require a bridge opening for passage of the bridge "Kvicksundsbron" will not be affected by this partial closing.

Partially closed area, position a) - d)	a)	59-27,218N	016-19,164E
	b)	59-27,103N	016-19,252E
	c)	59-27,083N	016-19,167E
	d)	59-27,200N	016-19,081E

Bsp Mälaren - Hjälmaren 2024/s19, s57



Partially closed area at the bridge "Kvicksundsbron"

*** 19158 (P)****Chart: 113****Sweden. Lake Mälaren and Södertälje Canal. Lake Mälaren. SE of Västerås. Granfjärden. Light Fagerö. New light replacing old light.**

Period: April 2025

The light Fagerö is demolished during april and rebuilt at a new location approximately 200 meter south of current position.

There could be a period of no light at the location.

Mariners are requested to navigate with caution in the area.

Light Fagerö Fl(2) WRG 6s	a)	59-30,13N	016-50,21E	Old light position
New planned position for the light	b)	59-30,02N	016-50,26E	

Not shown in ENC.

Bsp Mälaren - Hjälmarén 2024/s22

Sjöfartsverket. Publ. 24 Mar 2025

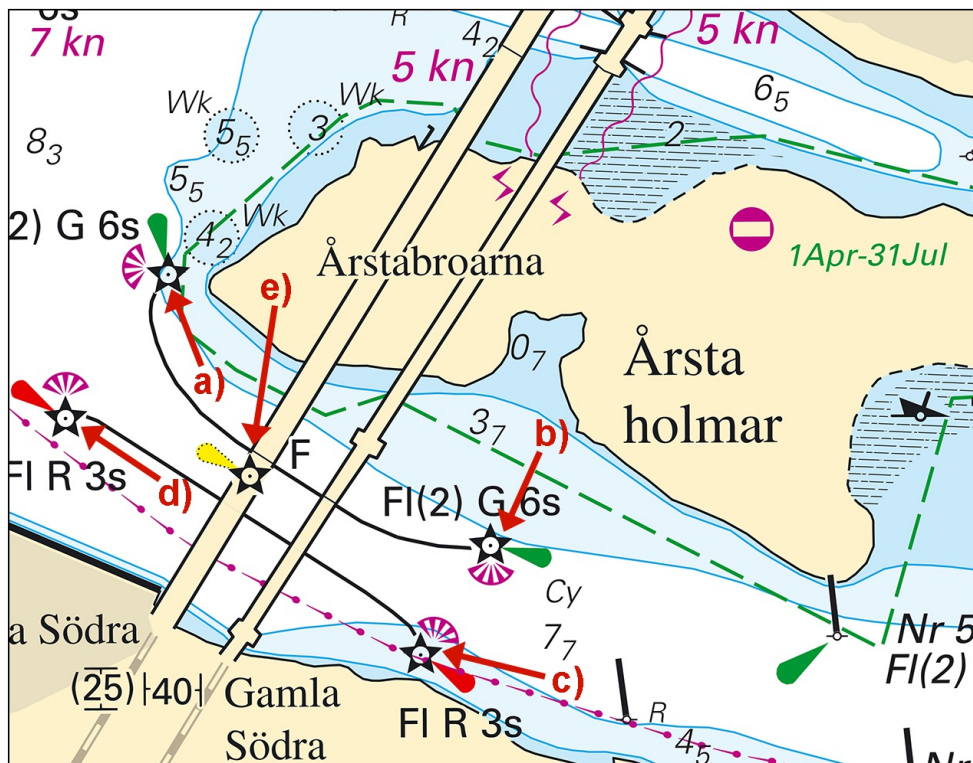
* 19163

Chart: 6141

Sweden. Lake Mälaren and Södertälje Canal. Stockholm. Södermalm. Årstaholmar. The bridges "Årstabroarna". Floodlight. Light.

Insert	floodlight	a)	59-18,466N	018-02,288E	See chartlet
Insert	floodlight	b)	59-18,362N	018-02,528E	
Insert	floodlight	c)	59-18,321N	018-02,475E	
Insert	floodlight	d)	59-18,412N	018-02,212E	
Insert	light F	e)	59-18,389N	018-02,350E	

Bsp Mälaren - Hjälmaren 2024/s51



Amendments at the bridges "Årstabroarna"

Southern Baltic

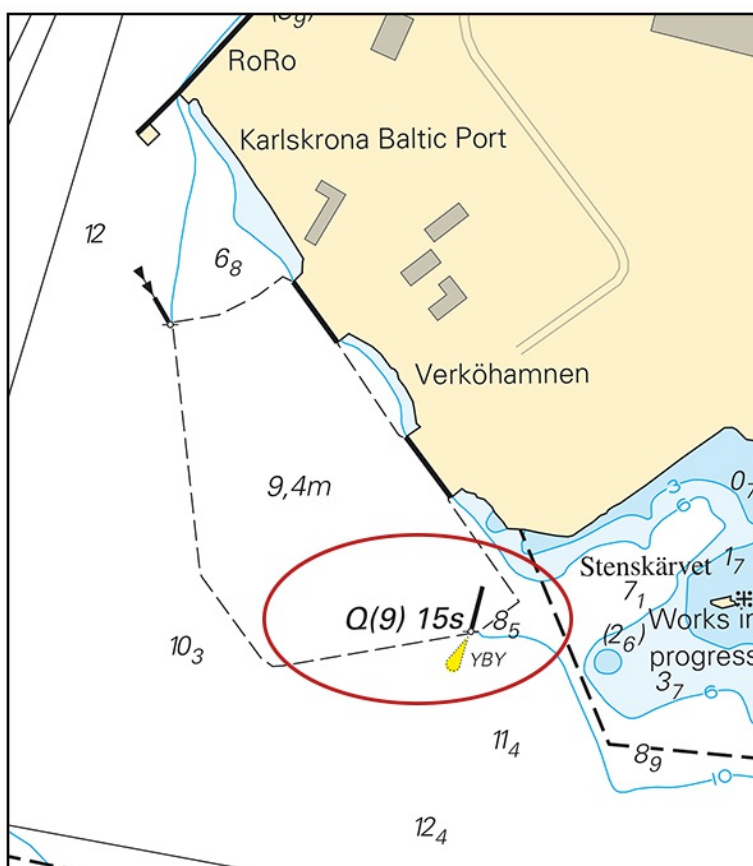
* 19138

Chart: 7411, 7413

Sweden. Southern Baltic. Karlskrona. Verköhamnen. Cardinal mark.

Replace	west cardinal spar buoy with topmark with	west cardinal light spar buoy Q(9) 15s	56-09,614N	015-37,944E	See chartlet
----------------	---	--	------------	-------------	--------------

Bsp Hanöbukten 2022/s40, s41, s42, s43



Cardinal spar buoy replaced by light spar buoy. Verköhamnen, Karlskrona

Kattegat

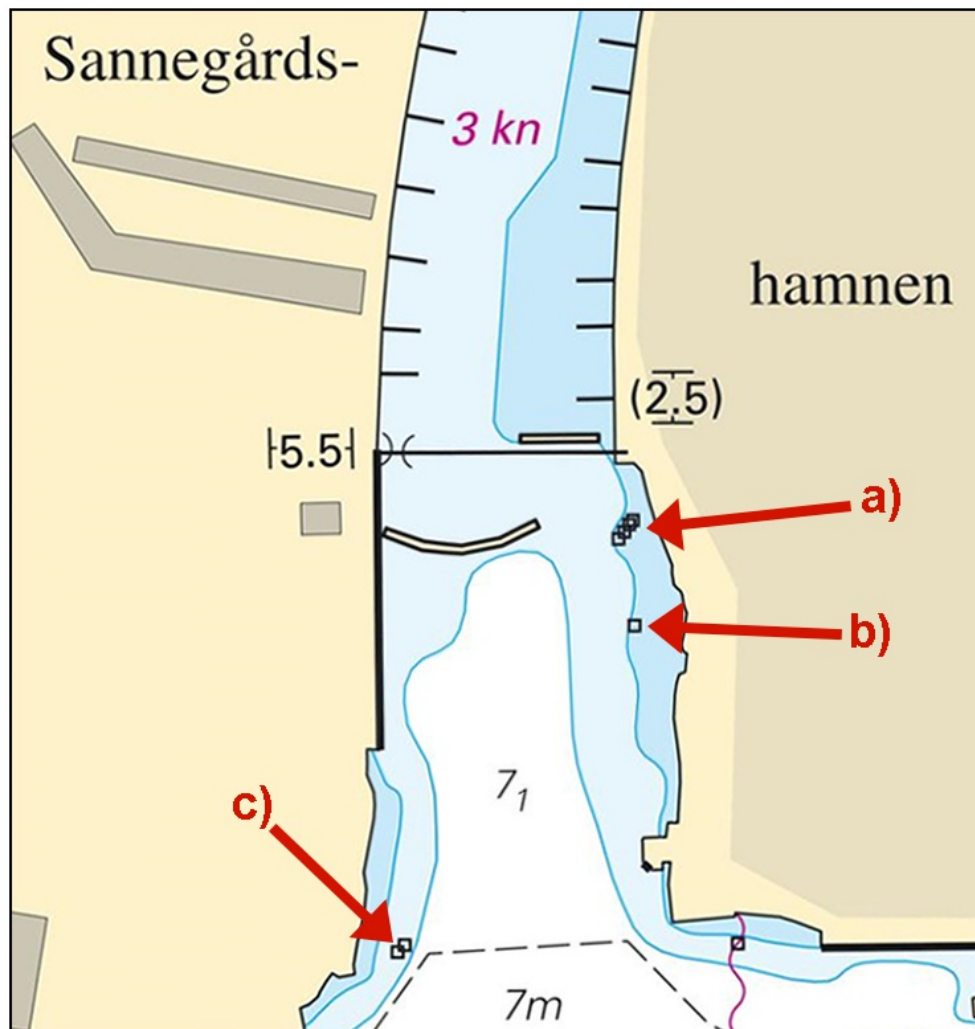
* 19144

Chart: 9312

Sweden. Kattegat. Gothenburg. Göta älv. Sannegårdshamnen. Demolished dolphins.

Delete	4 dolphins	in position a)	a)	57-42,278N	011-55,640E	See chartlet
Delete	dolphin		b)	57-42,252N	011-55,644E	
Delete	2 dolphins	in position c)	c)	57-42,167N	011-55,527E	

Bsp Västkusten S 2023/s58, s59, Bsp Västkusten S 2025/s58, s59



Chartlet showing demolished dolphins

*** 19167 (T)****Chart: 923, 924****Sweden. Kattegat. W of Halmstad. Ringenäs. Firing exercise. April 1, 2025.**

Position approximately	56-40,8N	012-38,6E	Firing restriction area R41A RINGENÄS
------------------------	----------	-----------	---------------------------------------

Firing will take place at R41A Ringenäs firing range during stated times. The dangerous area extends from the shore according to the table below. Two lights on shore, VQ Y, will be active during firing.

For further information call +46 (0)35 266 39 55, +46 (0)35 536 77.

Date	Time	Range
------	------	-------

April 1	0900 - 1630 LT	2.4 M
---------	----------------	-------

Not shown in ENC.

Bsp Västkusten S 2023/s28, s29, s30, Bsp Västkusten S 2025/s28, s29, s30

Försvarmakten. Publ. 26 Mar 2025

Lake Vänern and Trollhätte Canal

*** 19069 (T)****Chart: 133, 1331, 135****Sweden. Lake Vänern and Trollhätte Canal. Lake "Vänern". Kållandsö. Uller sund. Ulleredsbro. Repair work.**

Period: March 31 - May 9, 2025.

During the period stated above, repair work will be carried out on the bridge between the mainland and Kållandsö, in the position given below. For this reason, it is not possible to pass under the bridge during this period.

The work involves two stages, of which this is the first. Information about stage two will be communicated in a further NtM.

Contact: Project Manager, tel. +46 (0)10 123 83 96, Swedish Transport Administration, tel. +46 (0)771 921 921

Bridge position	58-37,614N	013-08,166E
-----------------	------------	-------------

Not shown in ENC.

Bsp Vänern 2022/s27, s45

Trafikverket. Publ. 26 Mar 2025

Inshore waters

* 19150 (T)

Chart: 114

Sweden. Inshore waters. Örebro. W of bridge Skebäcksbron. Works.

Period: May 26 - July 7, 2025

Works with construction of a water pipeline in Svartån in Örebro.

The area is marked with special purpose spar buoys.

Mariners are requested to pass the area with caution.

Works	59-16,419N	015-14,032E
-------	------------	-------------

Not shown in ENC.

Bsp Mälaren - Hjälmarren 2024/s08



Works in Örebro

Hjälmarens Sjötjänst AB. Publ. 26 Mar 2025