

Notices to Mariners, SWEDEN Swedish Maritime Administration



Areas in Swedish Notices to Mariners



NtM-Editorial office
Swedish Maritime Administration
601 78 Norrköping

Sweden
Tel: 0771 630 605
E-mail: ufs@sjofartsverket.se

Publisher:
Hydrographer Patrik Wiberg

The Swedish Notices to Mariners (Ufs) booklet is an official Swedish publication regularly published on a weekly basis.

Each PDF-file consists of a number of notices also accessible on www.sjofartsverket.se/ntm

Each booklet contains information on changes made to official Swedish nautical charts, as well as essential information on occurrences that pertain to safe navigation in Swedish waters.

Information available on foreign waters is limited. Ufs is not suitable for the task of keeping BA-charts and other nautical charts updated.

Note: Unintentional page breaks may occur as the PDF-file is generated automatically.

Announcements – General information, e.g. new chart editions, statutes/decrees from national authorities

Notices – Chart corrections and temporary/preliminary notices for a given geographical location

An asterisk (*) in front of the notice number denotes that the notice is based on source material obtained from a Swedish national source and that the details stated therein affect Swedish waters.

When a notice number is followed by a '(P)' this signifies that the information contained therein is of a preliminary nature. An upcoming notice containing a chart correction will replace the former.

Similarly, when the letter '(T)' is used this indicates that the notice is of a temporary nature.

In case no period of validity is stated, such a notice will be invalidated either when a new temporary notice or a chart correction replaces it.

Information in temporary and preliminary notices are generally available as an update to ENC. In case ENC updates are not available, the notice will state 'Not shown in ENC'.

Bearings are true and given clockwise from 000° to 360° and, when describing a light house beam, indicate a direction from seaward towards shore.

Note: Chartlets are intended to simplify chart correction work and are not always true to scale. Generally, these pictorials show the largest charted scale available for respective area.

The respective informant is responsible for factual content.

Please refer to more information on the use of Ufs in the official Swedish publication **Ufs A**.

Reporting dangers and errors

All observations concerning floating aids to navigation, unlit beacons and lights, objects adrift or any other occurrence that may have a detrimental impact on the safety at sea are to be reported to Sweden Traffic at the earliest possible opportunity.

Call: Sweden Traffic

Channel: Appropriate working channel

Phone: +46 771 630 685 (24/7)

E-mail: swedentraffic@sjofartsverket.se

Affected charts and Notices

Affected charts	Notice no	Affected charts	Notice no
10	18597 (T)	6144	18597 (T)
10	18619 (T)	6145	18597 (T)
13	18617	6162	18597 (T)
61	18597 (T)	6163	18597 (T)
62	18597 (T)	6171	18597 (T)
92	18618 (T)	6172	18597 (T)
111	18597 (T)	6173	18597 (T)
112	18597 (T)	6181	18597 (T)
113	18619 (T)	6211	18597 (T)
133	18617	6212	18597 (T)
414	18612 (T)	9313	18594
536	18597 (T)		
611	18597 (T)		
612	18597 (T)		
615	18597 (T)		
616	18597 (T)		
617	18597 (T)		
619	18597 (T)		
621	18597 (T)		
922	18566 (T)		
923	18618 (T)		
924	18618 (T)		
931	18594		
932	18551 (T)		
934	18563 (T)		
1331	18617		
4101	18612 (T)		
6141	18595 (T)		
6141	18597 (T)		
6142	18595 (T)		
6142	18597 (T)		
6143	18597 (T)		

ANNOUNCEMENTS

No Announcements in this booklet.

NOTICES

Areas without notices in this booklet

The Quark
Sea of Bothnia
Gulf of Finland
Gulf of Riga
Central Baltic
South-Eastern Baltic
Southern Baltic
South-Western Baltic
The Belts
Inshore waters
not area bound

Bay of Bothnia

* 18612 (T)

Chart: 4101, 414

Sweden. Bay of Bothnia. Luleå. Malmporten. Recommended route for pleasure craft.

Period: Until further notice

Pleasure craft are advised to use Fairway 7631 for passage to/from port of Luleå. This due to dredging operation in the port entrance.

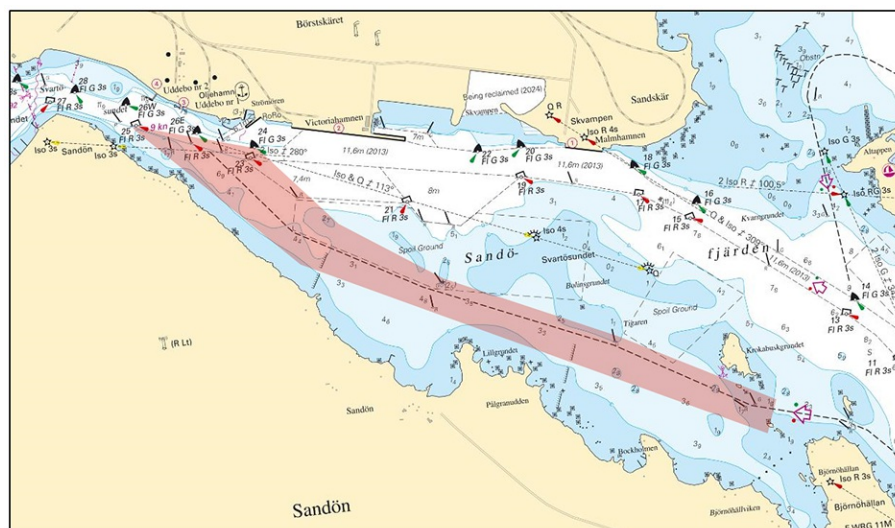
A CPA of 250 meters is required when passing the dredgers.

See position of affected fairway below, and chartlet.

Fairway 7631	a)	65-31,679N	022-18,458E	See chartlet
	b)	65-31,955N	022-17,289E	
	c)	65-32,500N	022-14,579E	
	d)	65-32,837N	022-13,921E	

Not shown in ENC

Bsp Bottenviken 2023/s26, s58, s60



Luleå. Sandöleden. Fairway 7631.

Port of Luleå. Publ. 07 Aug 2024

Sea of Åland and Archipelago Sea

*** 18597 (T) Chart: 10, 111, 112, 536, 61, 611, 612, 6141, 6142, 6143, 6144, 6145, 615, 616, 6162, 6163, 617, 6171, 6172, 6173, 6181, 619, 62, 621, 6211, 6212**

Sweden. Sea of Åland and Archipelago Sea. Northern Baltic. Northern Baltic Sea and Ålands hav. Naval exercise.

Period: August 19 - September 22, 2024

A military exercise will take place in the northern part of the Baltic sea and parts of 'Ålands Hav'. Mariners are advised to navigate with caution.

Due to exercise specific reasons vessels may appear without AIS.

Not shown in ENC

Bsp Mälaren - Hjälmarén 2024/s06, s07, Bsp Ostkusten 2023/s04, s05, Bsp Stockholm M 2024/s04, s05, Bsp Stockholm N 2024/s04, s05, Bsp Stockholm S 2024/s04, s05

Försvarmakten. Publ. 07 Aug 2024

Northern Baltic

* 18595 (T)

Chart: 6141, 6142

Sweden. Northern Baltic. Stockholm. Riddarfjärden. Swimming competition.

Period: August 17, 0900 - 1330 LT

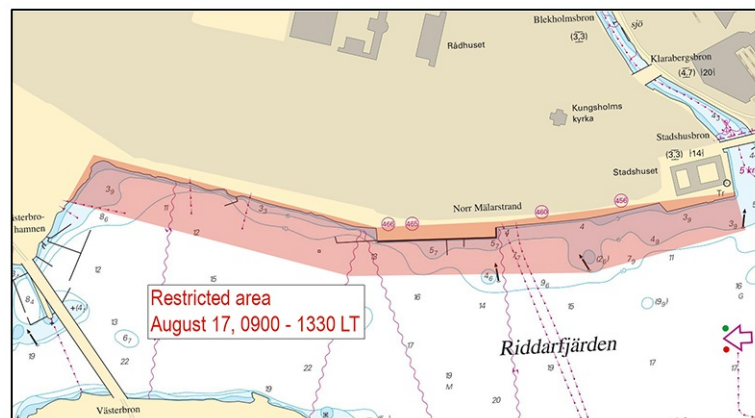
An area in the northern part of 'Riddarfjärden' along quay 'Stadshuskajen' will be closed for all vessels due to swimming competition.

It is prohibited for vessels to enter the area during the above stipulated times. The area is marked with yellow fluorescent buoys, and guard vessels (VHF Ch. 16/68) will be stationed outside the area.

Boundry for closed area a) - e)	a)	59-19,618N	018-03,379E
	b)	59-19,569N	018-03,403E
	c)	59-19,524N	018-02,988E
	d)	59-19,511N	018-02,385E
	e)	59-19,647N	018-01,615E

Not shown in ENC

Bsp Mälaren - Hjälmarén 2024/s51, Bsp Stockholm M 2024/s10



Riddarfjärden. Closed area.

Länsstyrelsen i Stockholm. Publ. 07 Aug 2024

Time: August 19 - 24

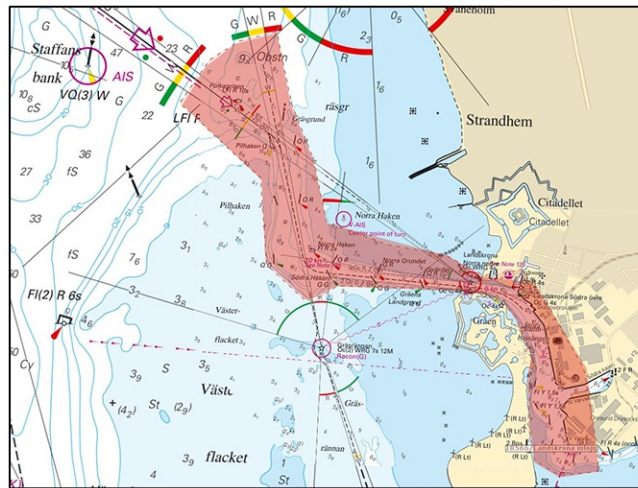
Geotechnical surveys will be conducted at the below stated positions from a raft with support legs. The raft is equipped with AIS.

The work is sensitive to poor weather conditions, thus the work may exceed the stipulated time frame.

a)	55-52,897N	012-47,167E
b)	55-52,819N	012-47,202E
c)	55-52,613N	012-47,138E
d)	55-52,582N	012-48,167E
e)	55-52,341N	012-47,557E
f)	55-52,106N	012-47,051E
g)	55-52,134N	012-47,073E
h)	55-52,120N	012-46,637E
i)	55-52,258N	012-47,635E
j)	55-52,338N	012-47,836E
k)	55-52,183N	012-47,652E
l)	55-52,185N	012-47,786E
m)	55-52,133N	012-47,960E
n)	55-52,105N	012-48,144E
o)	55-52,090N	012-48,343E
p)	55-52,078N	012-48,514E
q)	55-52,070N	012-48,708E
r)	55-52,054N	012-48,905E
s)	55-52,048N	012-49,051E
t)	55-52,023N	012-49,333E
u)	55-52,869N	012-47,104E

Not shown in ENC

Bsp Sydkysten 2020/s13, s50



Surveys

Sjöfartsverket. Publ. 07 Aug 2024

Kattegat

* 18594

Chart: 931, 9313

Sweden. Kattegat. Göteborg. Area for prohibited anchoring expires.

'Anchoring, fishing and diving prohibited' in the area between anchorage area A and B expires.

Delete	Anchoring, fishing, diving prohibited	57-33,766N	011-36,407E
--------	---------------------------------------	------------	-------------

Bsp Västkusten S 2023/s18, s48, s49

Länsstyrelsen i Göteborg. Publ. 07 Aug 2024

*** 18618 (T)****Chart: 92, 923, 924****Sweden. Kattegat. W of Halmstad. Ringenäs. Firing exercise. August 12 - 16, 2024.**

Position: Approx.	56-40,8N	012-38,6E	Firing restriction area R41A RINGENÄS
-------------------	----------	-----------	---------------------------------------

Firing will take place at R41A Ringenäs firing range during stated times. The dangerous area extends from the shore according to the table below. Two lights on shore, VQ Y, will be active during firing.

For further information call +46 35 266 39 55, +46 35 536 77.

Date	Hours	Range
August 12 - 15	0800 - 1630 LT	2.3 M
August 16	0800 - 1130 LT	2.3 M

Not shown in ENC.

Bsp Västkusten S 2023/s28, s29, s30

Försvarmakten. Publ. 07 Aug 2024

Skagerrak

*** 18551 (T)****Chart: 932****Sweden. Skagerrak. Tjörn. SW of Stenungsund. Bridge "Tjörnbron" between Almön and Källön. Temporarily reduced vertical clearance.**

Period: August 5, 2024 - March 31, 2025.

Vertical clearance is temporarily reduced to 42 meters due to maintenance works, on the bridge.

Bridge "Tjörnbron"	58-03,557N	011-46,883E
--------------------	------------	-------------

BSP Västkusten N 2023/s25, s41, Bsp Västkusten S 2023/s13, s64

Sjöfartsverket. Publ. 07 Aug 2024

*** 18563 (T)****Chart: 934****Sweden. Skagerrak. Hamburgsund. Reduced maximum draft.**

Time: August 20 - September 30

The cable ferry in Hamburgsund is temporarily replaced. The maximum draft is reduced to 3.0 meters during this time.

Hamburgsund cable ferry	58-33,147N	011-16,074E
-------------------------	------------	-------------

Not shown in ENC.

BSP Västkusten N 2023/s13

Trafikverket, Färjerederiet. Publ. 07 Aug 2024

Lake Vänern and Trollhätte Canal

*** 18617****Chart: 13, 133, 1331****Sweden. Lake Vänern and Trollhätte Canal. Vänern. S of Kalvön.
Aspholmsleden. Obstacle removed.**

Obstacle submerged in the fairway, Aspholmsleden, obstacle removed.

NTM 18599 (T) cancelled.

Position approx.	58-51,480N	013-12,804E
------------------	------------	-------------

Bsp Vänern 2022/s06, s09, s26, s40

Sjöfartsverket. Publ. 07 Aug 2024