

Notices to Mariners, SWEDEN Swedish Maritime Administration



Areas in Swedish Notices to Mariners



NtM-Editorial office
Swedish Maritime Administration
601 78 Norrköping

Sweden
Tel: 0771 630 605
E-mail: ufs@sjofartsverket.se

Publisher:
Hydrographer Patrik Wiberg

ANNOUNCEMENTS

No Announcements in this booklet.

NOTICES

Areas without notices in this booklet

The Quark
Sea of Bothnia
Gulf of Finland
Gulf of Riga
Northern Baltic
South-Eastern Baltic
Southern Baltic
South-Western Baltic
The Belts
Kattegat
Inshore waters
not area bound

Bay of Bothnia

* 18456

Chart: 4101, 412

Sweden. Bay of Bothnia. SE of Karlsborg. Light Kvarnören. Sectors. Leading line.

Light Karlsborg discontinued. Leading light removed.

Delete	light Oc R 5s	a)	65-47,846N	023-17,248E
Delete	leading line Kvarnören - Karlsborg from a) - b)	b)	65-45,492N	023-19,552E

Amended sectors for light Kvarnören

Light Kvarnören Q WRG	65-46,703N	023-18,368E
-----------------------	------------	-------------

Bearing (seen from the sea) Color

334,7 - 335,9	G
335,9 - 339,9	W
339,9 - 341,1	R
341,1 - 334,7	Dk

Adm. LoL (C5720)

Bsp Bottenviken 2023/s10, s68, s69

Sjöfartsverket. Publ. 19 Jun 2024

Sea of Åland and Archipelago Sea

*** 18429**

Chart: 536

Sweden. Sea of Åland and Archipelago Sea. Hargshamn. Glöten. Light. Light sectors.

Light Glöten. New sectors.

Insert	new sectors for light Glöten.	60-10,444N	018-28,940E
---------------	-------------------------------	------------	-------------

Bearings (from sea towards the light) Color

296,4° - 300,6°	G
300,6° - 301,1°	AL.WG
301,1° - 301,7°	W
301,7° - 302,0°	AL.WR
302,0° - 306,4°	R
306,4° - 296,4°	Dk

Bsp Stockholm N 2024/s16, s62

Sjöfartsverket. Publ. 19 Jun 2024

*** 18530**

Chart: 536

Sweden. Sea of Åland and Archipelago Sea. N of Stockholm. Hargshamn. S of Väringsö. Quay 4.

A hydrographic survey at quay 4 in Hargshamn has shown other depths than charted.

Important amendments are presented in the table below, and will be published in the next print of the affected chart/s.

The changes are available as an ENC update.

Replace	sounding (10,7) with sounding (11,8)	a)	60-10,140N	018-29,260E
----------------	--------------------------------------	----	------------	-------------

Bsp Stockholm N 2024/s61

Sjöfartsverket. Publ. 19 Jun 2024

Lake Mälaren and Södertälje Canal

*** 18531 (T)**

Chart: 111, 113, 1131, 1133

Sweden. Lake Mälaren and Södertälje Canal. Mälaren. Amendments to lights and beacons.

Time: August - November 2024.

Several lights and other beacons situated in Lake Mälaren are being renovated and rebuilt. Lights may be extinguished for certain periods during the project.

New beacons and lights will also be built.

Up-to-date information and more details are provided by VTS Södertälje.

Changes to the charts will be communicated via Swedish NtM as the work progresses.

Lake Mälaren	59-24,0N	017-24,0E
--------------	----------	-----------

Not shown in ENC.

Bsp Mälaren - Hjälmarén 2024/s16, s17, s18, s19, s20, s21, s22, s23, s24, s25, s26, s28, s29, s56, s61, s62, s63

Sjöfartsverket. Publ. 19 Jun 2024

Central Baltic

*** 18471**

Chart: 622

Sweden. Central Baltic. Valdermarsvik. Cardinal spar buoy.

Insert	east cardinal spar buoy with topmark(BYB)	a)	58-12,135N	016-36,335E
---------------	---	----	------------	-------------

Bsp Ostkusten 2023/s62

Transportstyrelsen. Publ. 19 Jun 2024

The Sound

*** 18466**

Chart: 921, 922

Sweden. The Sound. W of Barsebäckshamn. Pinhättan. Buoyage.

Replace	west cardinal spar buoy with topmark to	west cardinal light spar buoy Q(9) 15s	a)	55-45,010N	012-51,188E
----------------	---	--	----	------------	-------------

Bsp Sydkusten 2020/s14, s16

Sjöfartsverket. Publ. 19 Jun 2024

*** 18535**

Chart: 9211

Sweden. The Sound. Port of Malmö. Dockan Marina. Works completed.

See: [2024:1007/18304](#)

Works in the entrance to Dockan Marina in port of Malmö is now completed.

See www.dockanmarina.se for more information.

Delete	area works in progress a) - d)	a)	55-37,120N	012-59,186E
		b)	55-37,137N	012-59,312E
		c)	55-37,109N	012-59,322E
		d)	55-37,091N	012-59,201E
Delete	text "Works in progress (2024)"	e)	55-37,111N	012-59,223E

www.dockanmarina.se

Bsp Sydkusten 2020/s44, s45, s46

Dockan Marina. Publ. 19 Jun 2024

Skagerrak

*** 18431**

Chart: 933

Sweden. Skagerrak. NW Orust. Kalvöfjord. Kalvön. Wreck.

Insert	wreck showing hull at level of chart datum	58-16,081N	011-40,162E
---------------	--	------------	-------------

BSP Västkusten N 2023/s20

Sjöfartsverket. Publ. 18 Jun 2024

*** 18476**

Chart: 933

Sweden. Skagerrak. Uddevalla, Västra flaket. Buoyage.

Insert	port-hand spar buoy	a)	58-20,632N	011-52,952E
Insert	port-hand spar buoy	b)	58-20,642N	011-53,128E
Insert	starboard-hand light spar buoy Fl G 5s	c)	58-20,739N	011-53,253E

BSP Västkusten N 2023/s37

Transportstyrelsen. Publ. 19 Jun 2024

*** 18532 (T)****Chart: 933, 9331****Sweden. Skagerrak. NW of Lysekil. Malmön. Kalven. Obstruction in fairway.**

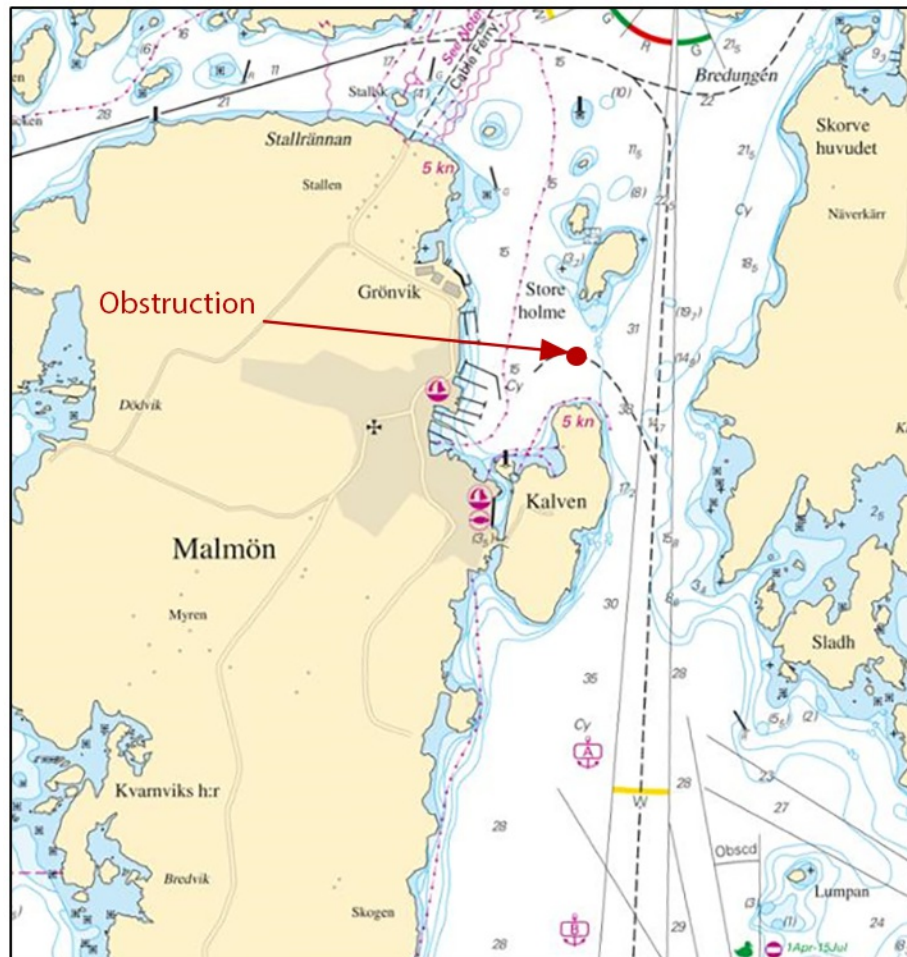
Time: Until further notice

Floating pipeline in the area, marked with fenders.

Obstruction	58-21,030N	011-20,972E
-------------	------------	-------------

Not shown in ENC.

BSP Västkusten N 2023/s15, s28



Obstruction at Bohus Malmön

SSRS. Publ. 19 Jun 2024

Lake Vänern and Trollhätte Canal

* 18529 (T)

Chart: 134

Sweden. Lake Vänern and Trollhätte Canal. Säffle. Säffle kanal. Closed for maintenance.

Time: August 26 - September 16, 2024

The Swedish Maritime Administration needs to carry out maintenance work in the lock in Säffle. During the time that the work is in progress, the lock cannot be used for sea traffic and the lock/fairway therefore needs to be temporarily closed.

The maintenance work is necessary to ensure continued operation of the lock. The period of the shutdown has been planned for low season, when the amount of sea traffic is limited.

Säffle canal	59-07,78N	012-55,47E
--------------	-----------	------------

Not shown in ENC.

<https://www.sjofartsverket.se/saffle-kanal>

Bsp Vänern 2022/s16, s38, s39

Sjöfartsverket. Publ. 19 Jun 2024