

## Notices to Mariners, SWEDEN Swedish Maritime Administration



### Areas in Swedish Notices to Mariners



SWEDISH MARITIME  
ADMINISTRATION

NtM-Editorial office  
Swedish Maritime Administration  
601 78 Norrköping

Sweden  
Tel: 0771 630 605  
E-mail: [ufs@sjofartsverket.se](mailto:ufs@sjofartsverket.se)

Publisher:  
Hydrographer Patrik Wiberg



# ANNOUNCEMENTS

## \* 17299 (T)

Chart: 922

### Sweden. The Sound. Landskrona. Maximum draft.

Expired notices: 17290(T)

Time: Until further notice

Maximum draft for vessels calling Port of Landskrona is reduced to 8,1m.

Maximum draft for vessels bound for 'Bruuns kaj' is 6,0m.

Landskrona	a)	55-51,71N	012-49,62E
Berth 'Bruuns kaj'	b)	55-51,568N	012-49,773E

Bsp Syd-kusten 2020/s13, s50

*Sjöfartsverket. Publ. 13 Dec 2022*

## \* 17306

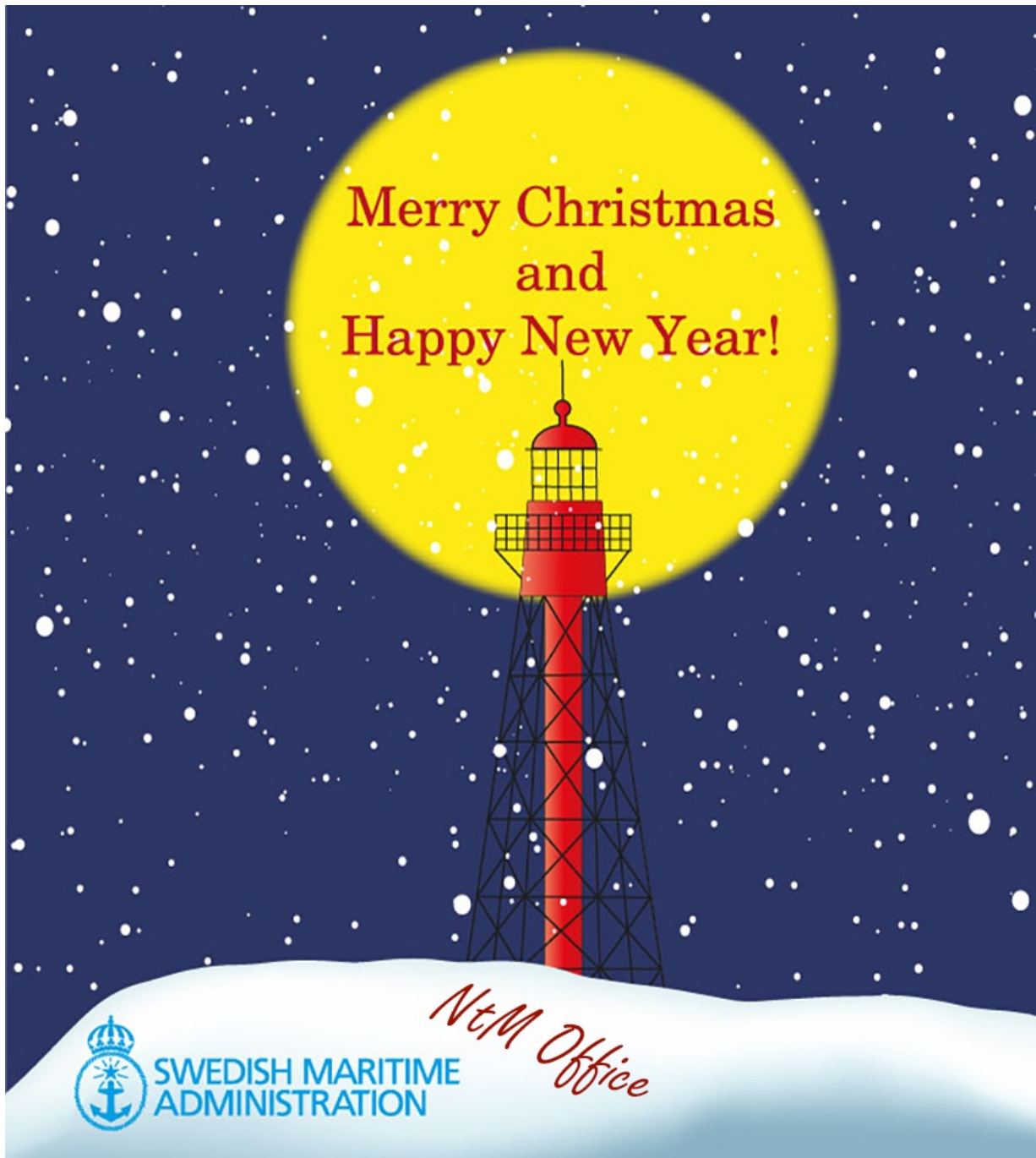
### Sweden. not area bound. A Merry Christmas and a Happy New Year!

The Swedish Maritime Administration would like to thank all of you who over the past year have provided information which have resulted in Notices to Mariners and/or corrections to charts and ENC's!

We also want to thank all of you who use the Swedish Maritime Administration's products and have studied the information in Swedish NtM and also special thanks to those who have provided comments and suggestions for the improvement of our products.

We are looking forward to continued good cooperation in the coming year!

Swedish NtM Office	Tel: +46771630605	<a href="mailto:ufs@sjofartsverket.se">ufs@sjofartsverket.se</a>
--------------------	-------------------	--



Christmas card

Swedish NtM, editorial staff. Publ. 14 Dec 2022

# NOTICES

## Areas without notices in this booklet

Bay of Bothnia
The Quark
Sea of Bothnia
Sea of Åland and Archipelago Sea
Gulf of Finland
Gulf of Riga
Central Baltic
South-Eastern Baltic
Southern Baltic
South-Western Baltic
The Sound
The Belts
Kattegat
Skagerrak
Lake Vänern and Trollhätte Canal
Inshore waters
not area bound

## Northern Baltic

**\* 17302**

**Chart: 6212**

**Sweden. Northern Baltic. Port of Norrköping. Suprakajen. Hydrographic survey. Depths.**

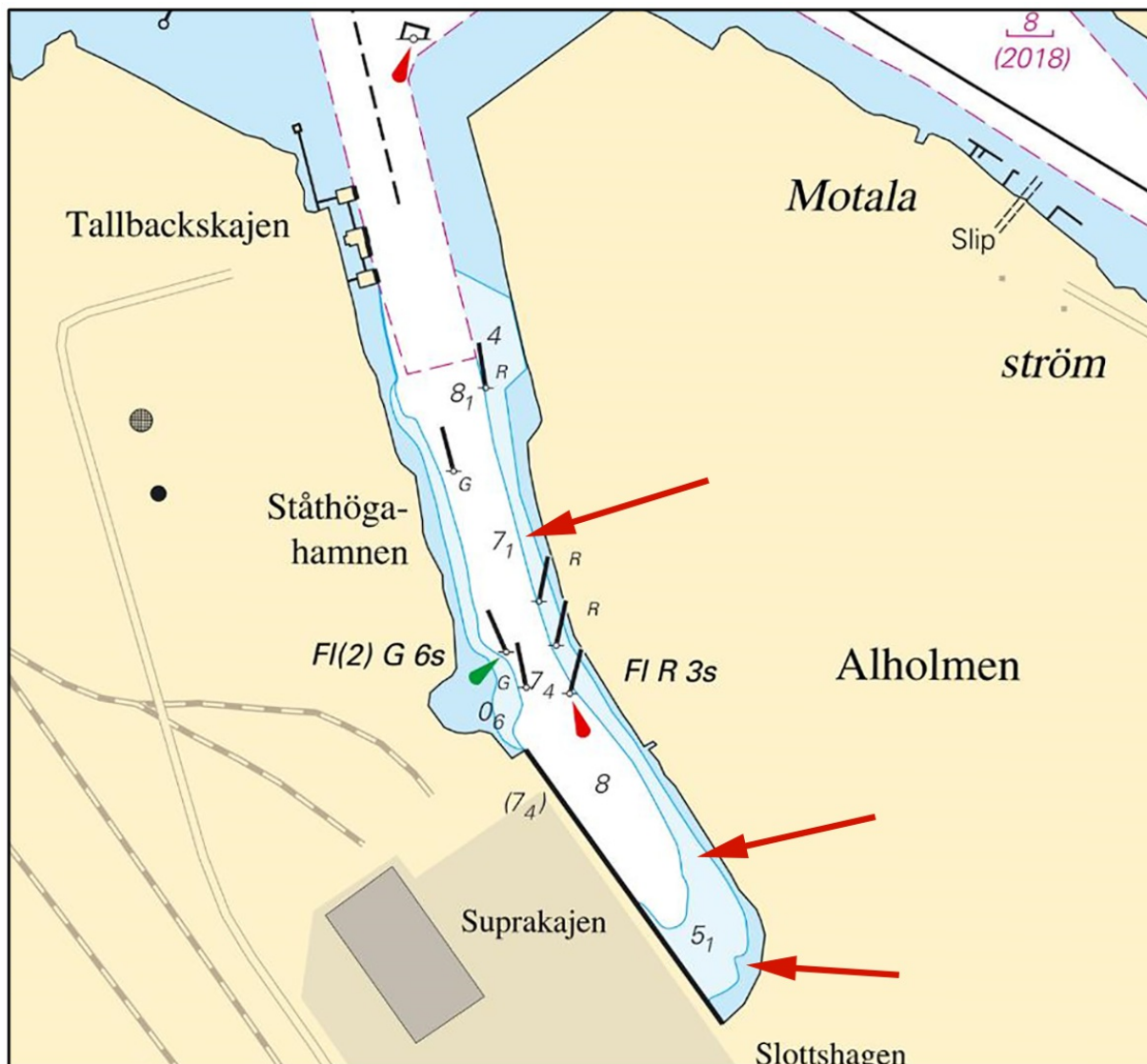
A hydrographic survey in Norrköping has shown other depths than charted.

Important amendments are presented in the table below, and will be published in the next print of the affected chart.

The changes are available as an ENC update.

<b>Amend</b>	6m-depth contour to a line between pos a) and b)	a)	58-36,476N	016-11,539E	Refer to chartlet
		b)	58-36,453N	016-11,549E	
<b>Amend</b>	3m-depth contour to pos c)	c)	58-36,414N	016-11,594E	
<b>Amend</b>	depth 7,7 to 7,1	d)	58-36,588N	016-11,393E	
<b>Insert</b>	depth at jetty 7,4	e)	58-36,477N	016-11,465E	

Bsp Ostkusten 2021/s58



Norrköping. Suprakajen

## Lake Mälaren and Södertälje Canal

\* 17206

Chart: 111, 113, 1131, 1133

Sweden. Lake Mälaren and Södertälje Canal. Lake Mälaren. Buoyage.

Expired notices: [2022:933/17164\(T\)](#), [2022:935/17193\(T\)](#)

Extensive changes have been made to the floating aids to navigation in lake Mälaren.

All changes will shortly be available as updates to ENC and will be included in future new editions of the paper charts.

<b>Replace</b>	port hand spar buoy with port hand light spar buoy FIR 3s	1)	59-28,780N	016-56,271E
<b>Replace</b>	starboard hand spar buoy with starboard hand light spar buoy FIG 3s	2)	59-20,433N	017-29,624E
<b>Insert</b>	port hand light spar buoy FIR 3s	3)	59-31,065N	016-58,472E
<b>Insert</b>	south cardinal spar buoy	4)	59-27,739N	016-20,775E
<b>Insert</b>	starboard spar buoy	5)	59-23,119N	017-27,148E
<b>Delete</b>	starboard hand spar buoy	6)	59-27,402N	016-09,408E
<b>Insert</b>	starboard light buoy FIG 3s	7)	59-27,389N	016-09,284E
<b>Insert</b>	port hand light buoy FIR 3s	8)	59-27,320N	016-09,307E
<b>Move</b>	starboard light buoy 30m NW to pos 9) and amend character to FIG 3s	9)	59-27,609N	016-10,946E
<b>Replace</b>	port hand spar buoy with port hand light spar buoy FIR 3s	10)	59-18,566N	017-32,759E
<b>Delete</b>	isolated danger mark 'Blacken' FI(2) 12s	11)	59-28,004N	016-30,394E
<b>Delete</b>	port hand light spar buoy FIR 3s	12)	59-26,979N	016-16,047E
<b>Insert</b>	port hand light spar buoy FIR 3s	13)	59-26,939N	016-15,807E
<b>Move</b>	starboard hand buoy 'Broken N' Q G 20m NE to pos 14)	14)	59-27,392N	016-07,412E
<b>Delete</b>	starboard hand spar buoy	15)	59-27,343N	016-07,534E
<b>Delete</b>	starboard hand spar buoy	16)	59-27,296N	016-07,901E
<b>Insert</b>	starboard hand light buoy Q G	17)	59-27,299N	016-07,984E
<b>Amend</b>	port hand light buoy character to FIR 3s	18)	59-27,241N	016-07,653E
<b>Move</b>	starboard light buoy 'Broken Ö' 30m N to pos 19) and amend character to FIG 3s	19)	59-27,320N	016-07,694E
<b>Move</b>	starboard hand buoy Q G 20m S to pos 20)	20)	59-31,148N	017-08,677E
<b>Move</b>	starboard hand buoy Q G 90m NE to pos 21)	21)	59-29,873N	016-49,989E
<b>Delete</b>	starboard hand spar buoy	22)	59-27,317N	016-08,354E
<b>Delete</b>	port hand spar buoy	23)	59-27,241N	016-08,363E
<b>Insert</b>	port hand light buoy FIR 3s	24)	59-27,214N	016-07,981E
<b>Move</b>	port hand light buoy to pos 25)	25)	59-27,264N	016-08,632E
<b>Insert</b>	starboard hand light spar buoy FIG 3s	26)	59-30,717N	017-11,965E
<b>Delete</b>	starboard hand spar buoy	27)	59-31,129N	017-09,746E
<b>Insert</b>	starboard hand light spar buoy FIG 3s	28)	59-31,120N	017-09,796E



<b>Move</b>	port hand light buoy FIR 3s 150m E to pos 29)	29)	59-27,367N	016-09,903E
<b>Delete</b>	starboard hand spar buoy	30)	59-28,114N	016-28,669E
<b>Delete</b>	port hand spar buoy	31)	59-32,755N	016-34,096E
<b>Insert</b>	port hand light spar buoy FIR 3s	32)	59-32,757N	016-34,118E
<b>Replace</b>	starboard hand spar buoy with starboard hand light spar buoy FI G 3s	33)	59-26,958N	016-15,073E
<b>Delete</b>	port hand spar buoy	34)	59-30,386N	016-46,192E
<b>Insert</b>	port hand light buoy FIR 3s	35)	59-30,404N	016-46,150E
<b>Replace</b>	port hand spar buoy with port hand light buoy FIR 3s	36)	59-27,548N	016-11,051E
<b>Delete</b>	port hand spar buoy	37)	59-27,750N	016-11,708E
<b>Delete</b>	starboard hand light buoy Q G	38)	59-30,427N	016-46,558E
<b>Insert</b>	starboard hand light buoy FI G 3s	39)	59-30,422N	016-46,560E
<b>Delete</b>	port hand spar buoy	40)	59-30,594N	016-46,359E
<b>Insert</b>	north cardinal spar buoy	41)	59-30,605N	016-46,316E
<b>Delete</b>	starboard hand spar buoy	42)	59-30,710N	016-57,613E
<b>Insert</b>	starboard hand light spar buoy FI G 3s	43)	59-30,675N	016-57,572E
<b>Delete</b>	starboard hand spar buoy	44)	59-31,837N	017-04,449E
<b>Insert</b>	starboard hand light spar buoy FI G 3s	45)	59-31,813N	017-04,380E
<b>Insert</b>	starboard hand spar buoy	46)	59-28,468N	017-14,308E
<b>Insert</b>	starboard hand spar buoy	47)	59-31,991N	016-59,878E
<b>Delete</b>	starboard hand light buoy Q G	48)	59-31,871N	016-59,206E
<b>Insert</b>	starboard hand light buoy FI G 3s	49)	59-31,889N	016-59,214E
<b>Delete</b>	starboard hand spar buoy	50)	59-31,799N	017-03,821E
<b>Insert</b>	starboard hand light spar buoy FI G 3s	51)	59-31,779N	017-03,812E
<b>Replace</b>	port hand spar buoy with port hand light spar buoy FIR 3s	52)	59-19,391N	017-31,503E
<b>Delete</b>	starboard hand light buoy FI(2) 6s	53)	59-29,144N	016-52,360E
<b>Insert</b>	starboard hand light buoy Q G	54)	59-29,078N	016-52,728E
<b>Delete</b>	starboard hand spar buoy	55)	59-30,766N	016-45,209E
<b>Insert</b>	starboard hand light spar buoy FI G 3s	56)	59-30,757N	016-45,212E
<b>Delete</b>	port hand spar buoy	57)	59-34,375N	016-33,307E
<b>Insert</b>	port hand light spar buoy FIR 3s	58)	59-34,341N	016-33,345E
<b>Replace</b>	port hand spar buoy with port hand light spar buoy FIR 3s	59)	59-31,029N	017-09,215E
<b>Delete</b>	starboard hand spar buoy	60)	59-32,022N	016-39,338E
<b>Insert</b>	starboard hand light spar buoy FI G 3s	61)	59-31,985N	016-39,232E
<b>Move</b>	port hand spar buoy 160m NW to pos 62)	62)	59-28,967N	016-52,150E
<b>Move</b>	port hand light buoy 'Hästskoggrund' Q R 80m NW to pos 63)	63)	59-31,888N	016-37,544E



<b>Delete</b>	port hand spar buoy	64)	59-31,731N	016-36,504E
<b>Insert</b>	port hand light buoy Q R	65)	59-31,680N	016-36,306E
<b>Move</b>	port hand light buoy FI R 3s 20m NE to pos 66)	66)	59-30,103N	016-34,740E
<b>Move</b>	starboard hand spar buoy 15m N to pos 67)	67)	59-31,834N	017-01,076E
<b>Move</b>	port hand light buoy Q R 40m E to pos 68)	68)	59-30,326N	016-46,707E
<b>Replace</b>	port hand spar buoy with port hand light spar buoy FI R 3s	69)	59-30,855N	016-42,270E
<b>Replace</b>	starboard hand spar buoy with south cardinal spar buoy	70)	59-30,857N	016-46,415E
<b>Replace</b>	port hand spar buoy with port hand light spar buoy FI R 3s	71)	59-27,274N	016-21,067E
<b>Replace</b>	port hand spar buoy with port hand light spar buoy FI R 3s	72)	59-27,275N	016-22,009E
<b>Delete</b>	port hand spar buoy	73)	59-35,048N	016-33,082E
<b>Insert</b>	port hand light spar buoy FI R 3s	74)	59-35,246N	016-33,020E
<b>Replace</b>	starboard hand spar buoy with starboard hand light buoy FI G 3s	75)	59-27,013N	016-15,745E
<b>Insert</b>	starboard light spar buoy FI G 3s	76)	59-27,059N	016-16,159E
<b>Replace</b>	port hand spar buoy with port hand light spar buoy FI R 3s	77)	59-31,661N	017-02,526E
<b>Replace</b>	port hand spar buoy with east cardinal spar buoy	78)	59-19,750N	017-30,067E
<b>Replace</b>	port hand spar buoy with port hand light spar buoy FI R 3s	79)	59-27,188N	016-19,789E
<b>Replace</b>	port hand spar buoy with port hand light spar buoy FI R 3s	80)	59-31,769N	017-01,010E
<b>Delete</b>	port hand spar buoy	81)	59-31,644N	017-01,576E
<b>Insert</b>	port hand light spar buoy FI R 3s	82)	59-31,647N	017-01,596E
<b>Replace</b>	port hand spar buoy with port hand light spar buoy Q R	83)	59-30,880N	016-43,700E
<b>Insert</b>	port hand light buoy Q R	84)	59-31,633N	016-59,126E
<b>Replace</b>	starboard hand spar buoy with starboard hand light spar buoy FI G 3s	85)	59-32,541N	016-34,794E
<b>Delete</b>	starboard hand spar buoy	86)	59-28,235N	016-05,519E
<b>Insert</b>	starboard hand light buoy FI G 3s	87)	59-28,183N	016-05,632E
<b>Delete</b>	port hand spar buoy	88)	59-28,217N	016-05,419E
<b>Insert</b>	port hand light buoy FI R 3s	89)	59-28,147N	016-05,572E
<b>Replace</b>	east cardinal spar buoy with east cardinal light spar buoy Q(3) 10s	90)	59-17,897N	017-33,356E
<b>Delete</b>	starboard hand light buoy FI(2) 6s	91)	59-30,235N	016-57,634E
<b>Insert</b>	starboard hand light buoy Q G	92)	59-30,192N	016-57,599E
<b>Delete</b>	starboard hand spar buoy	93)	59-27,951N	016-27,609E
<b>Insert</b>	starboard hand light buoy FI G 3s	94)	59-27,956N	016-27,626E
<b>Delete</b>	port hand spar buoy	95)	59-27,510N	016-25,649E
<b>Delete</b>	port hand spar buoy	96)	59-31,188N	016-59,300E
<b>Insert</b>	port hand light spar buoy FI R 3s	97)	59-31,205N	016-59,274E
<b>Insert</b>	starboard hand light spar buoy FI G 3s	98)	59-29,637N	017-13,441E

<b>Replace</b>	port hand spar buoy with port hand light spar buoy Q R	99)	59-31,621N	016-39,801E
<b>Replace</b>	starboard hand spar buoy with starboard hand light spar buoy FI G 3s	100)	59-31,734N	017-02,525E
<b>Replace</b>	starboard hand spar buoy with starboard hand light spar buoy Q G	101)	59-31,799N	017-03,017E
<b>Insert</b>	starboard hand light spar buoy FI G 3s	102)	59-31,393N	017-07,739E
<b>Move</b>	port hand spar buoy 15m S to position 103)	103)	59-29,539N	016-50,235E
<b>Delete</b>	port hand spar buoy	104)	59-27,140N	016-18,569E
<b>Insert</b>	port hand light spar buoy FI R 3s	105)	59-27,116N	016-18,704E
<b>Replace</b>	port hand spar buoy with port hand light buoy FI R 3s	106)	59-28,401N	016-05,014E
<b>Insert</b>	starboard hand light buoy Q G	107)	59-32,278N	016-35,227E
<b>Insert</b>	starboard hand light spar buoy FI G 3s	108)	59-28,870N	016-53,967E
<b>Replace</b>	port hand spar buoy with port hand light spar buoy FI R 3s	109)	59-31,669N	017-04,832E
<b>Move</b>	port hand light spar buoy Q R approx 100m S to position 110)	110)	59-27,725N	016-11,891E
<b>Move</b>	port hand light spar buoy Q R 200m SE to position 111)	111)	59-27,636N	016-12,235E
<b>Insert</b>	starboard hand light buoy Q G	112)	59-32,019N	016-36,643E
<b>Insert</b>	starboard hand light spar buoy FI G 3s	113)	59-32,115N	016-36,117E
<b>Move</b>	port hand spar buoy 100m SE to position	114)	59-16,529N	017-33,385E
<b>Replace</b>	starboard hand spar buoy with starboard hand light spar buoy FI G 3s	115)	59-30,933N	016-42,287E
<b>Replace</b>	starboard hand spar buoy with starboard hand light spar buoy FI G 3s	116)	59-30,855N	016-44,539E
<b>Replace</b>	starboard hand spar buoy with starboard hand light spar buoy Q G	117)	59-30,934N	016-44,021E
<b>Replace</b>	port hand spar buoy with port hand light buoy FI R 3s	118)	59-30,971N	016-41,240E
<b>Delete</b>	starboard hand spar buoy	119)	59-27,052N	016-14,154E
<b>Insert</b>	starboard hand light spar buoy FI G 3s	120)	59-26,993N	016-14,215E
<b>Insert</b>	port hand light buoy FI R 3s	121)	59-32,033N	016-35,918E
<b>Insert</b>	port hand light spar buoy FI R 3s	122)	59-32,105N	016-35,597E
<b>Replace</b>	starboard hand spar buoy with starboard hand light buoy FI G 3s	123)	59-28,434N	016-05,080E
<b>Delete</b>	starboard hand spar buoy	124)	59-27,655N	016-06,796E
<b>Insert</b>	starboard hand light buoy FI G 3s	125)	59-27,662N	016-06,800E
<b>Replace</b>	port hand spar buoy with port hand light buoy FI R 3s	126)	59-27,629N	016-06,726E
<b>Delete</b>	port hand spar buoy	127)	59-30,536N	016-46,975E
<b>Insert</b>	north cardinal spar buoy	128)	59-30,559N	016-46,958E
<b>Delete</b>	port hand spar buoy	129)	59-30,656N	016-35,314E
<b>Move</b>	port hand light buoy 'Sötskär' FI R 3s 150m SW to position 130)	130)	59-30,658N	016-35,288E
<b>Insert</b>	starboard hand light spar buoy FI G 3s	131)	59-31,177N	016-58,593E
<b>Delete</b>	starboard hand light buoy VQ G	132)	59-31,199N	016-59,101E
<b>Insert</b>	starboard hand light buoy Q G	133)	59-31,217N	016-59,072E

<b>Insert</b>	starboard hand light spar buoy FI G 3s	134)	59-31,418N	016-59,080E
<b>Insert</b>	starboard hand light spar buoy Q G	135)	59-31,264N	016-59,131E
<b>Insert</b>	port hand spar buoy	136)	59-27,296N	016-22,735E
<b>Replace</b>	starboard hand spar buoy with starboard hand light spar buoy FI G 3s	137)	59-22,536N	017-27,513E
<b>Delete</b>	port hand spar buoy	138)	59-29,918N	016-57,566E
<b>Insert</b>	port hand light spar buoy FI R 3s	139)	59-29,920N	016-57,528E
<b>Delete</b>	port hand spar buoy	140)	59-31,680N	017-05,280E
<b>Insert</b>	port hand light buoy FI R 3s	141)	59-31,665N	017-05,282E
<b>Replace</b>	starboard spar buoy with starboard light buoy Q G	142)	59-27,499N	016-10,416E
<b>Move</b>	port hand spar buoy 30m S to position 143)	143)	59-30,621N	016-57,959E
<b>Move</b>	starboard hand light buoy 'Vissjan' FI G 3s 150m W to position 144)	144)	59-27,443N	016-09,877E
<b>Move</b>	port hand spar buoy 45m SW to position 145)	145)	59-30,983N	016-35,621E
<b>Move</b>	starboard hand light buoy 'Västra tallklubben N' Q G 170m NW to position 146)	146)	59-27,723N	016-12,423E
<b>Delete</b>	starboard hand spar buoy	147)	59-27,474N	016-12,958E
<b>Insert</b>	starboard hand light spar buoy FI G 3s	148)	59-27,447N	016-13,015E
<b>Delete</b>	starboard hand spar buoy	149)	59-27,840N	016-11,658E
<b>Insert</b>	starboard hand light buoy Q G	150)	59-27,858N	016-11,747E

Bsp Mälaren - Hjälmarén 2020/s17, s18, s19, s20, s21, s22, s23, s24, s28, s56, s57, s58, s61, s62, s63

Sjöfartsverket. Publ. 14 Dec 2022