

Notices to Mariners, SWEDEN Swedish Maritime Administration



Areas in Swedish Notices to Mariners



SJÖFARTSVERKET

Editorial office
Swedish Maritime Administration
Ufs
601 78 NORRKÖPING
Sweden
tel: 0771 630 605
e-mail: ufs@sjofartsverket.se
Publisher:
Hydrographer Patrik Wiberg

ANNOUNCEMENTS

* 16431

Chart: 61, 62

New print of charts. New edition of chart 61 and 62.

A new edition of the following nautical charts are available from December 2021:

| Chart | Edition |
|-------|------------------|
| 61 | 12.0 NEW EDITION |
| 62 | 5.0 NEW EDITION |

A NEW EDITION is a print of an existing chart, containing changes significant to navigation which are not possible to fully describe in the Swedish NtM.

Sjöfartsverket, Norrköping. Publ. 30 november 2021

* 16433 (T)

General information to mariners during winter conditions.

Time: Until spring of 2022.

Mariners are advised to particularly observe the following during the winter season:

BEFORE BREAKING ICE: To avoid accidents to persons using the ice for transportation and recreation special attention is required before breaking the ice near shore and in archipelagos, see further information in Swedish NtM Notice 16434(T).

ICE BRIDGES: Floating bridges are sometimes laid across narrow straits enabling transportation when neither vessels nor road vehicles can be used.

BUOYAGE: Buoyage at sea in Bay of Bothnia, Sea of Bothnia and Lake Vänern is generally withdrawn during the ice season. Buoyage may also be withdrawn inside small harbours. The movement of ice can bring buoys and spar buoys out of position or submerge them. Lights, Racons, AIS, radar reflectors and top marks may be damaged or withdrawn during the winter. During ice conditions, floating aids to navigation should generally be considered to be unreliable. After the ice has melted in the spring it generally takes significant time before all buoyage have been overhauled and/or replaced.

CABLE FERRIES: The cable might lie on top of the ice which makes it impossible to pass the ferry route. At some road ferry crossings speed restriction apply when the water is covered by ice. Refer to information in Swedish NtM.

DGPS: The range of DGPS-transmitters may be reduced due to ice covering the aerials.

ICE BOOMS: Ice booms are established at some locations in Trollhätte Canal during wintertime to avoid drifting ice floes from affecting the traffic. For the same reason a rope is laid across River Nordre älv at Kornhall.

ICE-BREAKING SERVICE: The Swedish governmental ice-breaking service provides sea ice-breaking from open waters to inshore waters protected from sea- and pack ice. Information on winter navigation, contact information to ice breakers etc. can be found on the webpage www.sjofartsverket.se/winternavigation and in the booklet "Winter Navigation". The webpage www.baltice.org contains valuable information on winter navigation in the entire Baltic Sea region.

ICE MAPS and TRAFFIC RESTRICTIONS: Daily updated ice maps and current ice restrictions are published on the websites www.smhi.se/icechart and www.baltice.org.

LIGHTS: The glass on lights and light-buoys may quickly become covered by rime, snow and ice. This could make the light faint or invisible or colored sectors to appear as white. Snow on the solar panels could result in discharged batteries which could make the light unlit, faint or its character wrong.

NOTICES TO MARINERS AND NAVIGATIONAL WARNINGS: Normally no navigational warning or NtM is issued when buoys are withdrawn in waters covered by ice. If a buoy is withdrawn or a racon is removed from a buoy well before the waters have been covered by ice, a warning and notice will be issued in accordance with normal procedures. This is also the case when buoys of great importance are withdrawn in areas that rarely are covered by ice, e.g. The Sound or the west coast of Sweden.

PILOT BOARDING. Pilot boarding places may be moved or withdrawn if the area is covered by thick ice. Always request updated information from the Pilot ordering central or from the pilot boat.

PROHIBITION TO BREAK THE ICE. It might be prohibited to break the ice in some areas. Refer to Swedish NtM for further information.

REPORTING. Ships en route to Swedish and Finnish ports in Bay of Bothnia and Sea of Bothnia, which are subject to traffic restrictions, shall report to ICE INFO on VHF channel 78 when passing latitude 60-00N.

RACON. When severe ice conditions are expected, Racon buoys will normally be replaced by ordinary light-buoys in order to avoid damage to the electronic unit.

ROADS ON THE ICE. The ice might be used by islanders for transportation. This is more common in our northern waters. The Master should ensure, before proceeding in ice-covered waters between inhabited islands and the mainland, that the ice is not used for transportation.

SPEED RESTRICTIONS. In some fairways speed restrictions apply when the water is covered by ice. This is announced in Swedish NtM.

TRAFFIC SEPARATION SCHEMES. If a TSS is covered by ice it may be temporarily withdrawn by the Swedish Transport Agency. Information about this will be given on NAVTEX and in Swedish NtM.

WINTER NAVIGATION 2020 - 2021 is an official publication with information on shipping in the Baltic Sea area during winter conditions. The publication is available for download at www.sjofartsverket.se/winternavigation or may be ordered from the Swedish Maritime Administration's Ice-breaking Department, Ph +46 771 63 25 25.

Ufs A, chapter 6.5.1

Sjöfartsverket. Publ. 1 december 2021

* 16434 (T)

Wintertime recommendations for maritime traffic for the prevention of ice-skating accidents etc.

The following recommendations have been drafted in order to prevent accidents for ice-skaters and others who make use of ice-covered waters for transportation and/or recreation due to ice having been broken.

The guidelines are also intended to limit the risk of persons being cut-off from the ability of reaching shore safely.

Follow the fairways and pay attention

Ships should, when transiting ice-covered waters, as far as possible, make use of charted fairways or the unofficial routes used by local passenger boats and islanders.

If you see persons on the ice in vicinity of your planned route you should ensure that ice is not broken up at their location or that a channel cut through the ice does not prevent these people from reaching shore safely.

Speed restrictions and bans on breaking ice

In order to ensure that ice is not broken - which would render it impossible to be used for transportation - waters may be closed to navigation or speed restrictions may apply at certain locations during the winter. Information on such restrictions will be published in Swedish NtM.

Cautions be considered before breaking a channel through the ice

Transiting ice-covered waters near shore and in archipelagos require detailed route planning. If possible, follow the fairways as mentioned or existing channels through the ice. Before breaking a new channel you should ascertain local conditions and ensure that you are not cutting off connection to the mainland for islanders.

Inform the public before breaking a new channel through the ice

Radio Sweden P4 - Sveriges Radio P4 - Trafikredaktionen

Send an e-mail to trafikredaktionen@sverigesradio.se with information on when and where the ice will or has been broken. State detailed information about the location, name of the vessel and contact details.

Follow up by calling +46 20 999 444 or +46 8 784 50 00, making reference to your e-mail.

Information will be broadcast on channel P4 during weekdays 0900-1800 LT and will additionally be published on the website <https://sverigesradio.se/sida/trafiken/>

Skridskonätet

Send an e-mail to fartyg@skridsko.net. The contents of the e-mail will automatically be published on the website www.skridsko.net/mail/fartyg/. The e-mail should contain the following information:

Subject: Location of the channel through the ice, ex. "Mälaren. Lövholmen-Stäket."

Text: Where/when when a channel will be broken or an existing channel through the ice has been observed. If possible, enclose a map delineating the area.

Ufs A, chapter 6.5

Sjöfartsverket. Publ. 1 december 2021

* 16438

Information from Swedish Maritime Administration. Modernisation of NtM service on the website.

Expired notices: 2021:856/15848

In the spring of 2021, the Swedish Maritime Administration's new modern website was launched. A great deal of work has also been going on throughout 2021 to modernize the NtM database, partly to create a more reliable service, but also to modernize the layout.

The launch of the new database will take place on December 6, 2021. The various menu choices available on the new website will be similar to the previous ones. Should problems arise when using the service, you are encouraged to contact the Swedish Maritime Administration NtM office with questions or opinions.

| Contact details to the Notice to Mariners office | |
|--|--|
| Phone | +46 (0)771-63 06 05 |
| E-mail | ufs@sjofartsverket.se |
| Website | www.sjofartsverket.se/ntm |

NOTICES**Bay of Bothnia***** 16377****Chart: 412****Sweden. Bay of Bothnia. Kalixälven. Bridge across Kalix river. Works completed.**

Expired notices: 2019:774/14345(T)

The work on the bridge across the Kalix river is completed.

| | | |
|-------------------------------|-----------|------------|
| Bridge across the Kalix river | 65-51,13N | 023-07,75E |
|-------------------------------|-----------|------------|

Bsp Bottenviken 2018/s10

NCC. Publ. 1 december 2021

Northern Baltic*** 16398 (P)****Chart: 617, 6171, 6172****Sweden. Northern Baltic. S of Nynäshamn. Konabbsfjärden. Norrskärshällar. Buoyage.**

Time: Spring 2022

| | | |
|---|------------|-------------|
| Planned amendment | | |
| South cardinal spar buoy replacing red spar buoy during spring 2022 | 58-47,743N | 017-53,059E |

BSP Stockholm S 2020/s24, s38

Sjöfartsverket. Publ. 1 december 2021

Lake Mälaren and Södertälje Canal*** 16424 (P)****Chart: 111****Sweden. Lake Mälaren and Södertälje Canal. NW of Stockholm. Järfälla. Stäket. Bridge under construction.**

Expired notices: 2021:886/16400

Time period: November 29, 2021 - summer 2023

A new bridge across the fairway by Stäket is under construction south of the existing road bridge. Work is conducted from land and from rafts.

The fairway will remain open except for a few times. Information about these occasions will be published in Swedish Notices to Mariners.

| | | | | |
|---------------|--|----|------------|-------------|
| Insert | bridge under construction from a) - b) | a) | 59-28,357N | 017-47,474E |
| | | b) | 59-28,346N | 017-47,531E |

Bsp Mälaren - Hjälmaran 2020/s47, s59

Peab. Publ. 1 december 2021

*** 16425****Chart: 1131****Sweden. Lake Mälaren and Södertälje Canal. Mälaren. Kvicksundsbron. Works completed.**

Expired notices: 2021:885/16386(T)

Work at the bridge has been completed.

| | | |
|-------------------------|------------|-------------|
| Bridge 'Kvicksundsbron' | 59-27,171N | 016-19,203E |
|-------------------------|------------|-------------|

Bsp Mälaren - Hjälmaran 2020/s19, s57

Jurstaholm Marine Support AB. Publ. 30 november 2021

Central Baltic

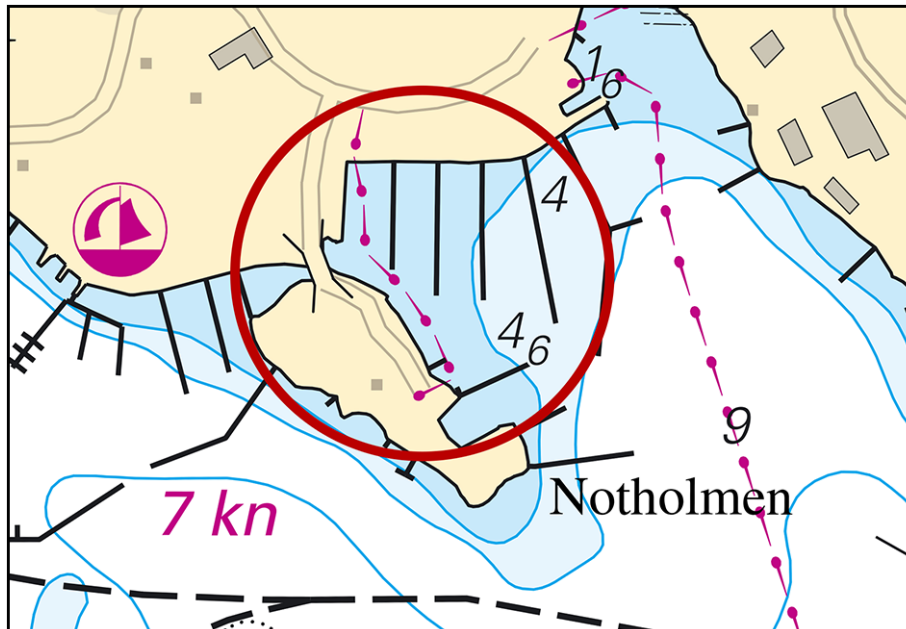
* 16392

Chart: 6231

Sweden. Central Baltic. Västervik. Skeppsbrofjärden. Notholmen. Submarine pipeline.

| | | | | |
|--------|---------------------------------|----|------------|-------------|
| Insert | submarine pipe a) - b) as shown | a) | 57-45,870N | 016-39,010E |
| | | b) | 57-45,750N | 016-39,108E |

Bsp Kalmarsund 2019/s30, S43, Bsp Ostkusten 2021/s54, s62



Notholmen

Westerviks Segelsällskap Vikingarna. Publ. 30 november 2021

* 16426

Chart: 624, 6241, 711

Sweden. Central Baltic. Oskarshamn. S of Stötbotten. E of Grimskallen nedre. NE of Stora Ekö. Buoyage.

| | | | | |
|--------|--|----|------------|-------------|
| Insert | special purpose spar buoy with topmark | a) | 57-16,160N | 016-33,230E |
| Insert | special purpose spar buoy with topmark | b) | 57-16,260N | 016-29,410E |
| Insert | special purpose spar buoy with topmark | c) | 57-12,900N | 016-30,100E |

Bsp Kalmarsund 2019/s07, s16, s17, s41, s42, S43

Transportstyrelsen. Publ. 1 december 2021

Southern Baltic

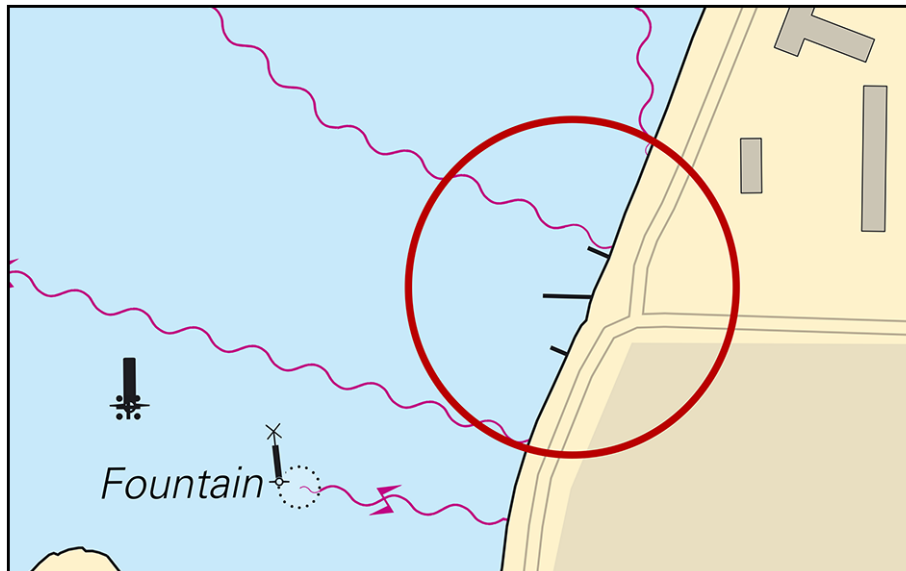
* 16402

Chart: 7411, 7413

Sweden. Southern Baltic. Karlskrona. Borgmästarfjärden. Jetty.

| | | | |
|--------|----------------|------------|-------------|
| Insert | jetty as shown | 56-09,960N | 015-34,884E |
|--------|----------------|------------|-------------|

Bsp Hanöbukten 2018/s40, s42



Borgmästarfjärden

Karlskrona kommun. Publ. 30 november 2021

* 16423

Chart: 839, 921

Sweden. Southern Baltic. Trelleborg. Amended depths. New berths.

A hydrographic survey in Trelleborg has shown other depths than previously charted.

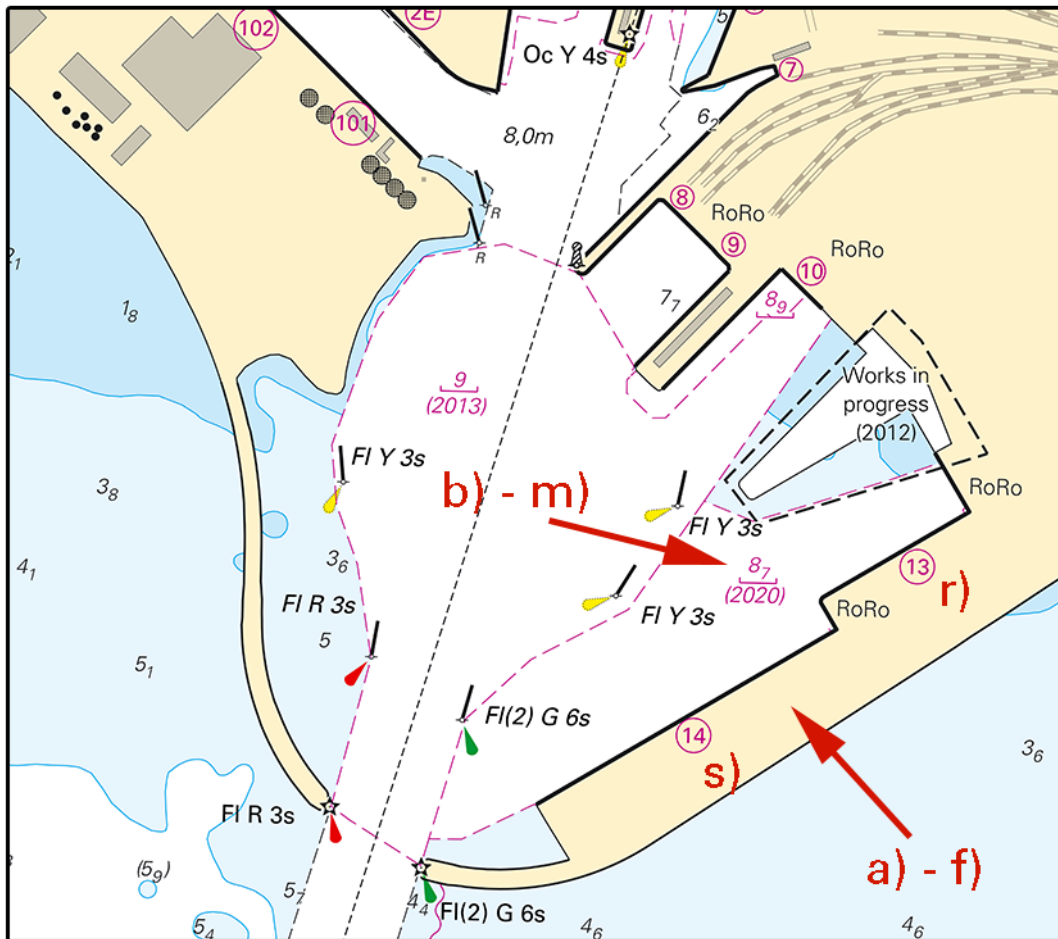
New berths have been built.

Important amendments are presented in the table below, and will be published in the next print of the affected chart.

The changes are available as an update of ENC.

| | | | | |
|---------------|--|----|------------|-------------|
| Insert | landarea within a) - f) | a) | 55-21,592N | 013-09,211E |
| | | b) | 55-21,633N | 013-09,167E |
| | | c) | 55-21,774N | 013-09,567E |
| | | d) | 55-21,796N | 013-09,543E |
| | | e) | 55-21,867N | 013-09,740E |
| | | f) | 55-21,904N | 013-09,704E |
| Insert | bar swept area 8,7 m (2020) within b) - m) | g) | 55-21,855N | 013-09,452E |
| | | h) | 55-21,87N | 013-09,384E |
| | | i) | 55-21,784N | 013-09,284E |
| | | j) | 55-21,745N | 013-09,154E |
| | | k) | 55-21,697N | 013-09,067E |
| | | l) | 55-21,603N | 013-09,019E |
| | | m) | 55-21,603N | 013-09,066E |
| Delete | area 'Works in progress (2012)' within n) - q) | n) | 55-21,854N | 013-09,468E |
| | | o) | 55-21,912N | 013-09,768E |
| | | p) | 55-21,825N | 013-09,862E |
| | | q) | 55-21,729N | 013-09,608E |
| Insert | berth number 13 | r) | 55-21,823N | 013-09,675E |
| Insert | berth number 14 | s) | 55-21,688N | 013-09,377E |

Bsp Sydkusten 2020/s25, s26, s53



Trelleborg

Sjöfartsverket. Publ. 1 december 2021

Kattegat

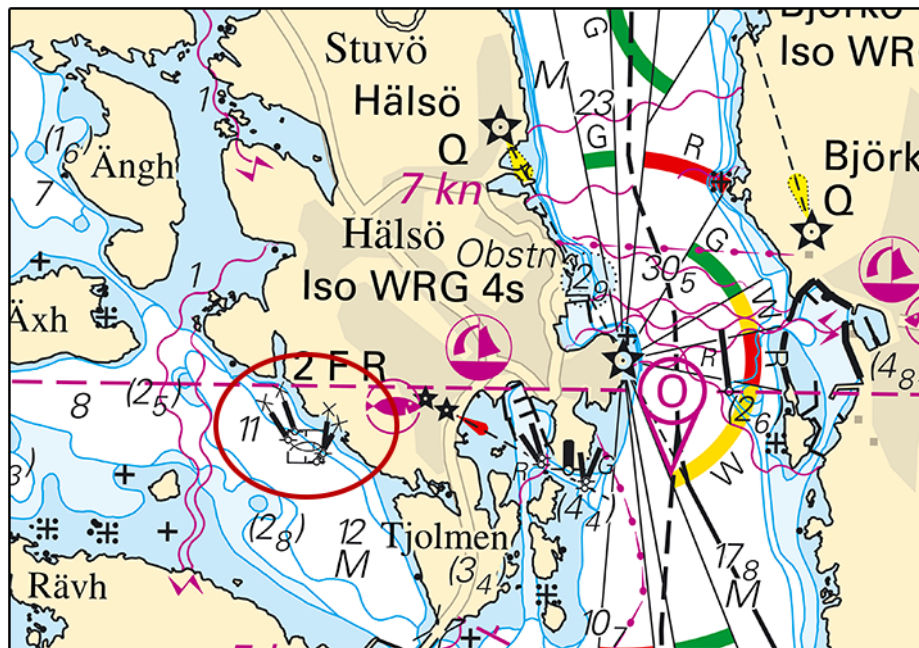
* 16206

Chart: 931

Sweden. Kattegat. Öckerö. SW of Hälsö. Marine farm. Buoyage.

| | | | | |
|--------|-----------------------------|----|------------|-------------|
| Insert | special purpose spar buoy | a) | 57-43,818N | 011-38,762E |
| Insert | special purpose spar buoy | b) | 57-43,831N | 011-38,780E |
| Insert | special purpose spar buoy | c) | 57-43,798N | 011-38,860E |
| Insert | special purpose spar buoy | d) | 57-43,786N | 011-38,842E |
| Insert | marine farm between a) - d) | | | |

Bsp Västkusten S 2021/s16, s17



New marine farm north of Öckerö

Ten Island Seafarm. Publ. 1 december 2021

* 16427 (T)

Chart: 92, 923, 924

Sweden. Kattegat. W of Halmstad. Ringenäs. Firing exercises. December 2 - 3.

Expired notices: 2021:886/16417(T)

Firing will take place at R41A Ringenäs firing range during stated times. The dangerous area extends from the shore according to the table below. A light on shore, VQ W, will be shown during firing.

For further information call +46 35 266 39 55, +46 35 536 77.

| Date | Hours | Range |
|------------|----------------|-------|
| December 2 | 0830 - 1400 LT | 2.4 M |
| December 3 | 0900 - 1600 LT | 2.4 M |

| | | | |
|-------------------|----------|-----------|--|
| Position: Approx. | 56-40,8N | 012-38,6E | Firing restriction area R41 A RINGENÄS |
|-------------------|----------|-----------|--|

Not shown in ENC.

Bsp Västkusten S 2021/s28, s29, s30

Försvarmakten. Publ. 26 november 2021

* 16428

Chart: 1352, 9312

Sweden. Kattegat. Gothenburg. Bridge 'Götaälbron'. Temporary closure cancelled.

Expired notices: 2021:881/16237(T)

Previously planned closure November 29, 0600 LT - December 6, 0600 LT has been cancelled.

| | | | |
|---------------------------|----|------------|-------------|
| Bridge 'Götaälbron' | a) | 57-42,9N | 011-58,0E |
| Bridge 'Marieholsbroarna' | b) | 57-43,728N | 011-59,606E |

Not shown in ENC.

www.hisingsbron.se

www.sjofartsverket.se/sv/Sjofart/Sjokort/Oppningstider-broar--kanaler/

Bsp Göta kanal 2011/s59, Bsp Västkusten S 2021/s59, Trollhätte kanal - Dalslands kanal 2020/s06

Sjöfartsverket. Publ. 26 november 2021

* 16432 (T)

Chart: 92, 923, 924

Sweden. Kattegat. W of Halmstad. Ringenäs. Firing exercises. December 7 - 9.

Firing will take place at R41A Ringenäs firing range during stated times. The dangerous area extends from the shore according to the table below. A light on shore, VQ W, will be shown during firing.

For further information call +46 35 266 39 55, +46 35 536 77.

| Date | Hours | Range |
|----------------|----------------|-------|
| December 7 - 9 | 0900 - 1600 LT | 2.4 M |

| | | | |
|-------------------|----------|-----------|--|
| Position: Approx. | 56-40,8N | 012-38,6E | Firing restriction area R41 A RINGENÄS |
|-------------------|----------|-----------|--|

Not shown in ENC.

Bsp Västkusten S 2021/s28, s29, s30

Försvarsmakten. Publ. 1 december 2021

Skagerrak

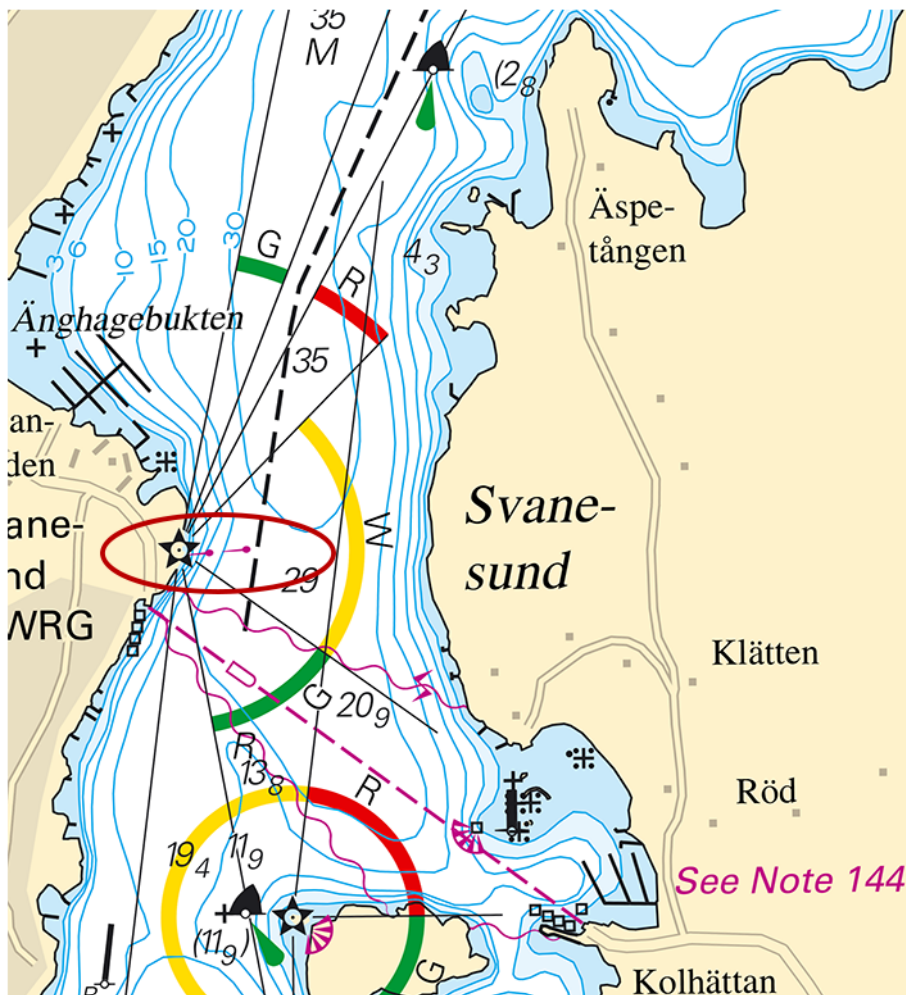
* 16333

Chart: 932

Sweden. Skagerrak. Orust. Svanesund. Pipeline.

| Insert | submarine pipeline between a) and b) | a) | 58-08,354N | 011-50,007E |
|--------|--------------------------------------|----|------------|-------------|
| | | b) | 58-08,358N | 011-50,111E |

Bsp Västkusten N 2021/s25, s39, Bsp Västkusten S 2021/s13, s63



Pipeline. Svanesund

Orust kommun. Publ. 1 december 2021

Lake Vänern and Trollhätte Canal

* 16429

Chart: 1353

Sweden. Lake Vänern and Trollhätte Canal. Trollhättan. Locks. Planned temporary closure cancelled.

Expired notices: 2021:881/16298(T)

Previously planned closure November 29, 0600 (LT) - December 6, 0600 (LT) has been cancelled.

| | | | | |
|-------------------|----|------------|-------------|---------------|
| Trollhättan locks | a) | 58-15,900N | 012-15,140E | Lock number 5 |
| | b) | 58-15,946N | 012-15,874E | Lock number 2 |

Not shown in ENC.

Trollhätte kanal - Dalslands kanal 2020/s20, s21

Sjöfartsverket. Publ. 26 november 2021

*** 16441 (T)**

Chart: 1352

Sweden. Lake Vänern and Trollhätte Canal. Göta älv. Älvängen. Works.

Time: December 1, 2021 - March 31, 2022

Work with landslide protection at Älvängen. The work area is marked with special purpose spar buoys. Vessels are allowed pass the work area during the entire time period.

Contact: Project manager +46 (0)703-98 42 12

| | | | | |
|-----------------------------|----|------------|-------------|----------------------|
| Work area between a) and b) | a) | 57-57,519N | 012-06,626E | (Fairway marker 514) |
| | b) | 57-57,851N | 012-07,396E | (Fairway marker 510) |

Bsp Göta kanal 2011/s53, Trollhätte kanal - Dalslands kanal 2020/s12

NCC Infrastructure. Publ. 1 december 2021