

## Notices to Mariners, SWEDEN Swedish Maritime Administration



### Areas in Swedish Notices to Mariners



**SJÖFARTSVERKET**

Editorial office  
Swedish Maritime Administration  
Ufs  
601 78 NORRKÖPING  
Sweden  
tel: 0771 630 605  
e-mail: [ufs@sjofartsverket.se](mailto:ufs@sjofartsverket.se)  
Publisher:  
Hydrographer Patrik Wiberg

## Affected charts and Notices

Underrättelser för sjöfarande (Ufs) is an official Swedish publication which provides information pertaining to shipping in the Baltic Sea Area and Kattegat, as well as Skagerrak east of a line drawn between Hanstholm and Lindesnes.

The information on foreign waters is largely confined to significant occurrences which may affect Swedish charts. Ufs is thus wholly unsuited for the purpose of keeping BA-charts and/or other national charts updated.

An asterisk (\*) in front of the number denotes that the notice is based on information obtained from Swedish source material and that the details contained therein affect Swedish waters.

When the letter (P) is adjacent to the notice number it serves as an indication that the notice is of a preliminary nature. Such notices will later be replaced by corresponding ones containing definitive information.

Similarly, when the letter (T) is placed adjacent to the notice number it denotes that the notice is of a temporary nature. In case no period of validity is given, this type of notice will be rendered invalid either when a new Temporary Notice is promulgated or if pertaining conditions cease to exist.

Bearings are true and given clockwise from 000° to 360° and, when given in conjunction with lights, indicate a direction from seaward.

Featured chartlets are primarily intended to simplify chart correction work and are not always true to scale. In general, they show the largest charted scale available for respective area.

Responsibility for the factual content published in Ufs rests with the informant.

Chart corrections and other information attributed to a specific geographical area can be found under NOTICES. Other information is found under ANNOUNCEMENTS, starting on pg. 3.

The periodical Ufs is normally published every Thursday and can be downloaded as a PDF-file from the homepage of the Swedish Maritime Administration. Note that as the file is automatically generated from a database unintentional page breaks may occur at random.

Further information on the use of Ufs can be found in the annual publication *Ufs A*.

## Reporting dangers and errors

All observations concerning floating aids to navigation, unlit beacons and lights, objects adrift or any other occurrence which may have a detrimental impact on safety at sea are to be forwarded to Sweden Traffic at the earliest possible opportunity.

Call: Sweden Traffic

VHF Channel: Appropriate working channel

Phone: +46 771 630 685 (24/7)

E-mail: [swedentraffic@sjofartsverket.se](mailto:swedentraffic@sjofartsverket.se)

Affected charts	Notice no	Sign	Affected charts	Notice no	Sign
4	16270 (T)		6172	16180	
7	16173		6173	16179	
8	16173		9312	16178	
13	16182		9312	16247	
13	16257 (T)		9313	16178	
41	16270 (T)		9331	16208	
74	16173				
112	16127 (T)				
131	16257 (T)				
132	16257 (T)				
133	16182				
133	16257 (T)				
134	16257 (T)				
135	16182				
135	16257 (T)				
415	16270 (T)				
421	16270 (T)				
612	16261				
621	16247				
622	16247				
713	16268 (T)				
742	16162				
839	16173				
924	16247				
933	16208				
934	16081				
1331	16182				
1331	16257 (T)				
1353	16257 (T)				
6141	16218 (T)				
6141	16264				
6142	16264				
6143	16260				
6144	16259				
6144	16260				
6145	16258				
6145	16259				
6163	16258				

## ANNOUNCEMENTS

\* 16247

Chart: 621, 622, 924, 9312

**New print of charts. New edition of chart 621, 622, 924 and 9312.**

A new edition of the following nautical charts are available from September 2021:

Chart	Edition
621	12.0 NEW EDITION
622	10.0 NEW EDITION
924	11.0 NEW EDITION
9312	13.0 NEW EDITION

A NEW EDITION is a print of an existing chart, containing changes significant to navigation which are not possible to fully describe in the Swedish NtM.

*Sjöfartsverket, Norrköping. Publ. 4 oktober 2021*

\* 16256

**Information from Swedish Maritime Administration. Seasonal check of buoyage.**

Expired notices: 2021:864/15988(T)

Every year, the Swedish Maritime Administration carry out major maintenance work to review spar buoys and other fairway markers along the Swedish coast. Due to the cold and persistent ice season, the work has been delayed in some waters.

The annual review is now completed in most waters with the exemption of the area around Lake Vänern. Therefore, the SMA choose to provide specific updates of the status of the AtoNs in these areas in separate NtMs.

Mariners who notice that buoyage is out of position are encouraged to contact the Swedish Maritime Administration.

We are dependent on the reports from mariners to maintain a fully operational status on the Aids to navigation.

Contact information is available on the website: [www.sjofartsverket.se](http://www.sjofartsverket.se)

*Sjöfartsverket. Publ. 6 oktober 2021*

## NOTICES

**Bay of Bothnia**

\* 16270 (T)

Chart: 4, 41, 415, 421

**Sweden. Bay of Bothnia. E of Byske. Tåme. Firing exercises. Oct 12 - 23, 2021.**

Position: Approx.	64-55N	021-30E	Tåme Firing practice area
-------------------	--------	---------	---------------------------

Firing exercises will be carried out at Tåme firing range during times listed below. During these times the charted danger area "R 58" is closed for navigation within stated distance from shore.

During firing a red balloon is shown from the observation towers. Further information on VHF channel 16, call Tåme skjutfält, or phone +46 921 348 405 alt. +46 921 349 100.

Date	Time	Range from shore
October 12 -14	0900 - 1600 LT	2.7 M
October 20	0900 - 1600 LT	2.7 M
October 21 -23	0800 - 2000 LT	2.7 M

Not shown in ENC.

Bsp Bottenviken 2018/s06, s07, s37, s38, s39, s40, s41, s42, s44

*Försvarsmakten. Publ. 6 oktober 2021*

**Northern Baltic**

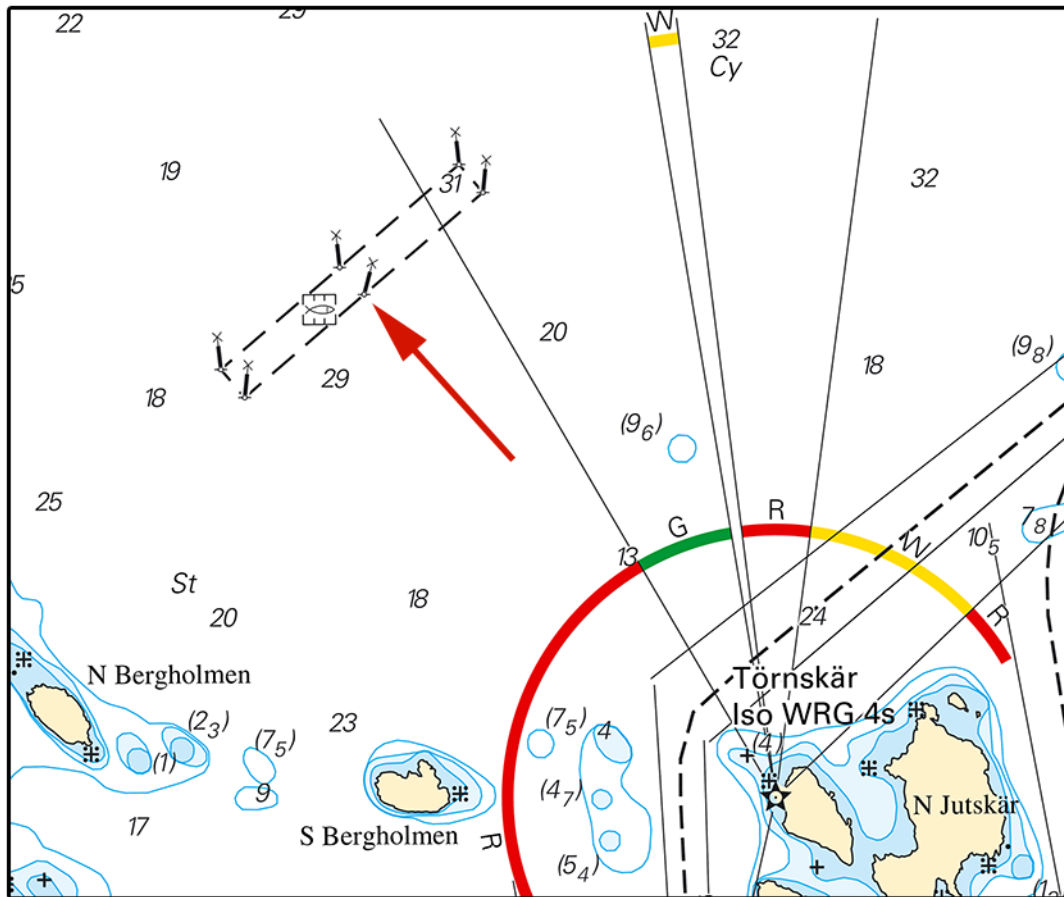
\* 16179

Chart: 6173

**Sweden. Northern Baltic. S of Trosa. N om Törniskär. Buoyage. Marine farm.**

Insert	special spar buoy with topmark	a)	58-49,557N	017-32,395E
Insert	special spar buoy with topmark	b)	58-49,586N	017-32,348E
Insert	special spar buoy with topmark	c)	58-49,453N	017-32,158E
Insert	special spar buoy with topmark	d)	58-49,348N	017-31,920E
Insert	special spar buoy with topmark	e)	58-49,377N	017-31,873E
Delete	special spar buoy with topmark	f)	58-49,481N	017-32,110E
Insert	marine farm within a) - f)			

Bsp Mälaren - Hjälaren 2020/s42, Bsp Ostkusten 2019/s09, s13, Bsp Ostkusten 2021/s09, s13, BSP Stockholm S 2020/s31



Törnskär

Ecopelag. Publ. 6 oktober 2021

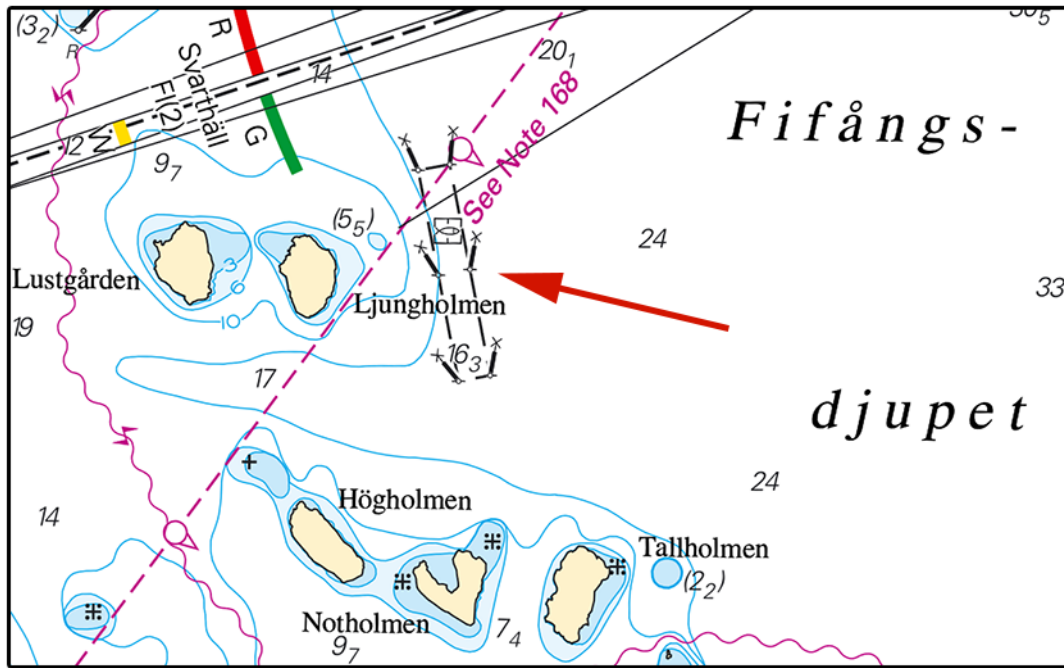
\* 16180

Chart: 6172

Sweden. Northern Baltic. S of Trosa. N of Kråmö. Fifångsdjupet. Buoyage. Marine farm.

Insert	special spar buoy with topmark	a)	58-51,455N	017-38,799E
Insert	special spar buoy with topmark	b)	58-51,449N	017-38,738E
Insert	special spar buoy with topmark	c)	58-51,350N	017-38,840E
Insert	special spar buoy with topmark	d)	58-51,244N	017-38,881E
Insert	special spar buoy with topmark	e)	58-51,238N	017-38,820E
Delete	special spar buoy with topmark	f)	58-51,344N	017-38,779E
Insert	marine farm within a) - f)			

Bsp Mälaren - Hjälaren 2020/s41, s42, Bsp Ostkusten 2019/s08, s09, Bsp Ostkusten 2021/s08, s09, BSP Stockholm S 2020/s30, s31



Ljungholmen

Ecopelag. Publ. 4 oktober 2021

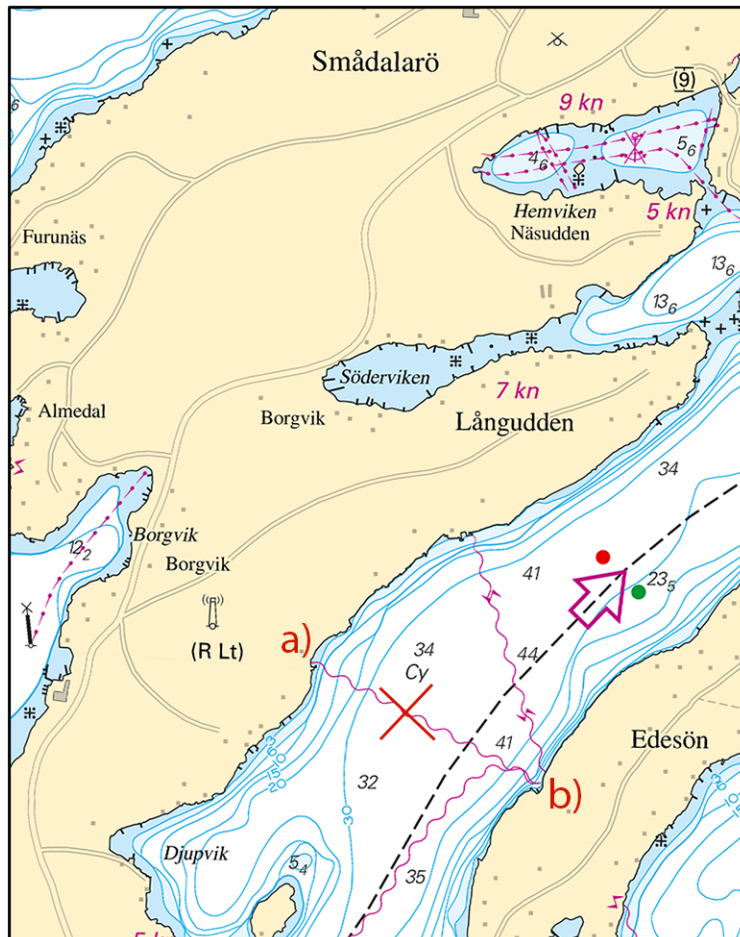
\* 16258

Chart: 6145, 6163

Sweden. Northern Baltic. Stockholm archipelago. Dalarö. Removed cable.

Delete	cable between	a) and b)	a)	59-09,190N	018-26,791E
			b)	59-09,024N	018-27,436E

Bsp Stockholm M 2020/s34



Dalarö. Removal of cable.

Baltic Offshore. Publ. 6 oktober 2021

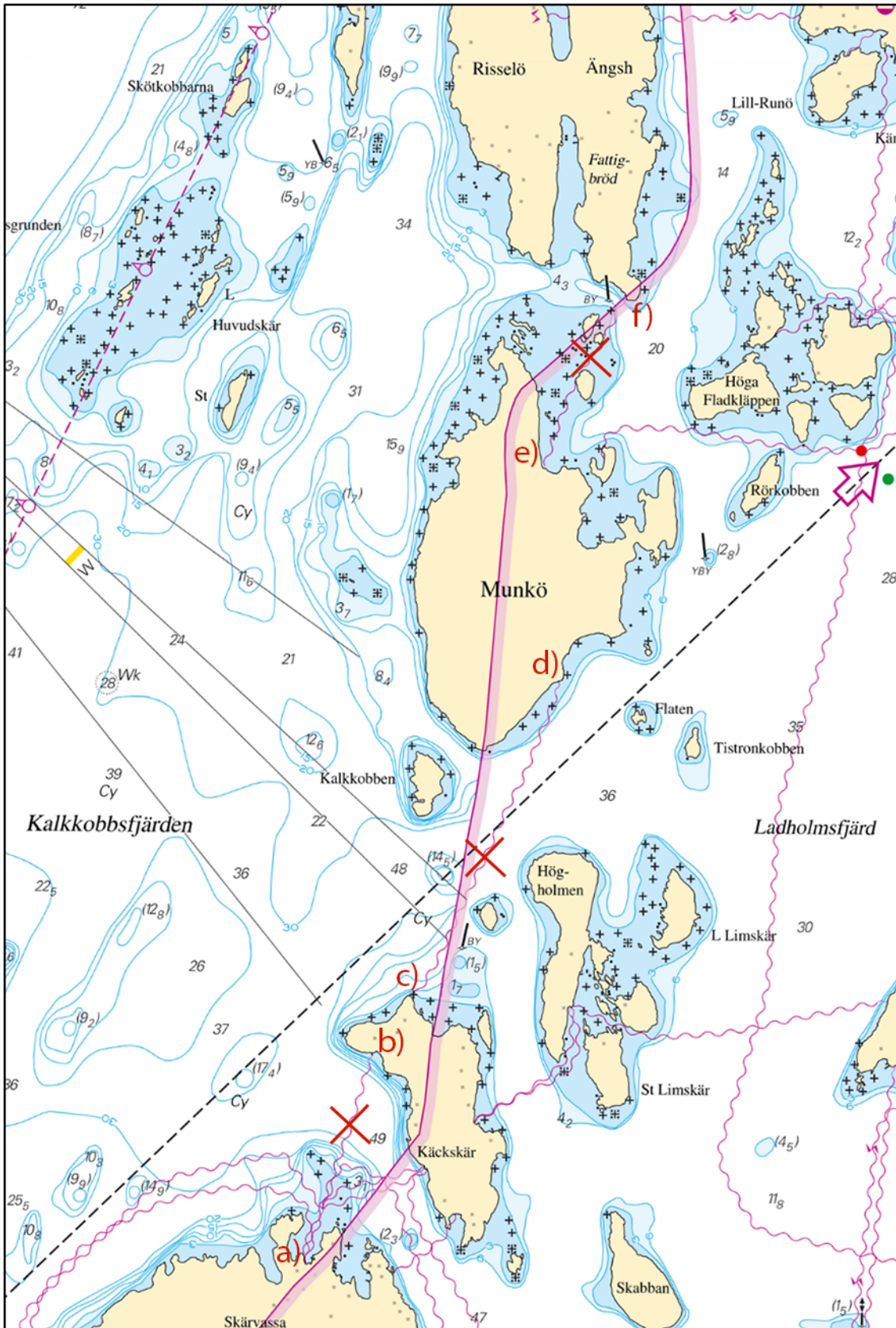
\* 16259

Chart: 6144, 6145

Sweden. Northern Baltic. Stockholm archipelago. Nämdö. Removed cables.

<b>Delete</b>	cable between	a) and b)	a)	59-12,807N	018-42,412E
			b)	59-13,177N	018-42,651E
<b>Delete</b>	cable between	c) and d)	c)	59-13,279N	018-42,794E
			d)	59-13,863N	018-43,307E
<b>Delete</b>	cable between	e) and f)	e)	59-14,254N	018-43,248E
				59-14,573N	018-43,534E

Bsp Stockholm M 2020/s29, s30, s37



Nämdö. Removal of cables

Baltic Offshore. Publ. 6 oktober 2021

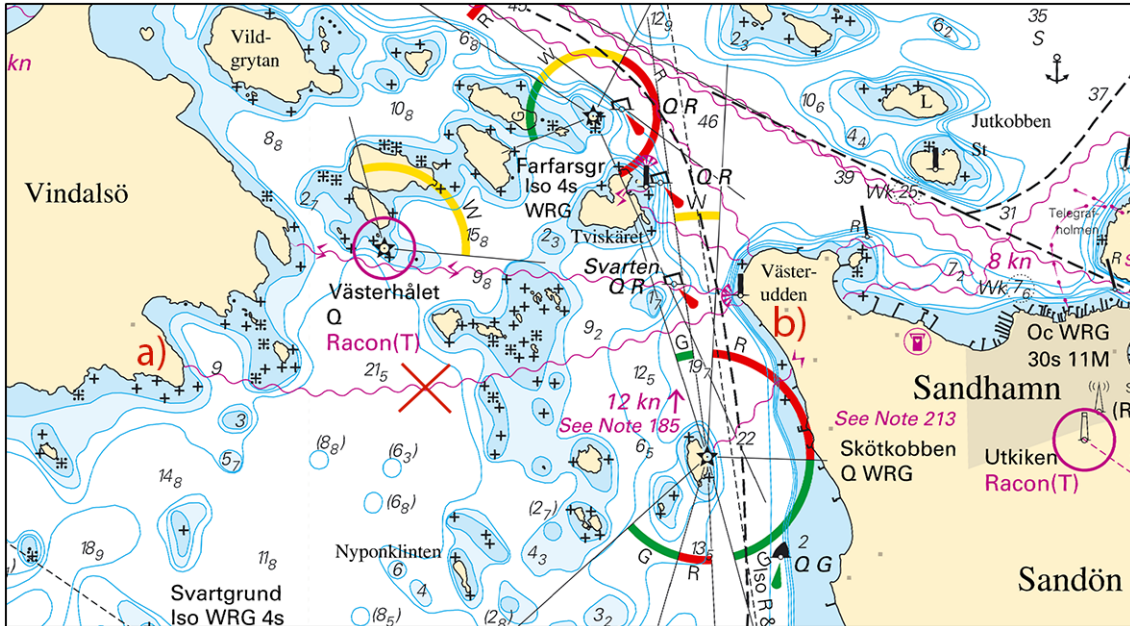
\* 16260

Chart: 6143, 6144

Sweden. Northern Baltic. Stockholm archipelago. Sandhamn. Removed cable.

<b>Delete</b>	cable between	a) and b)	a)	59-17,315N	018-52,136E
			b)	59-17,412N	018-53,751E

Bsp Stockholm M 2020/s25, s31



Sandhamn. Removal of cable.

Baltic Offshore. Publ. 6 oktober 2021

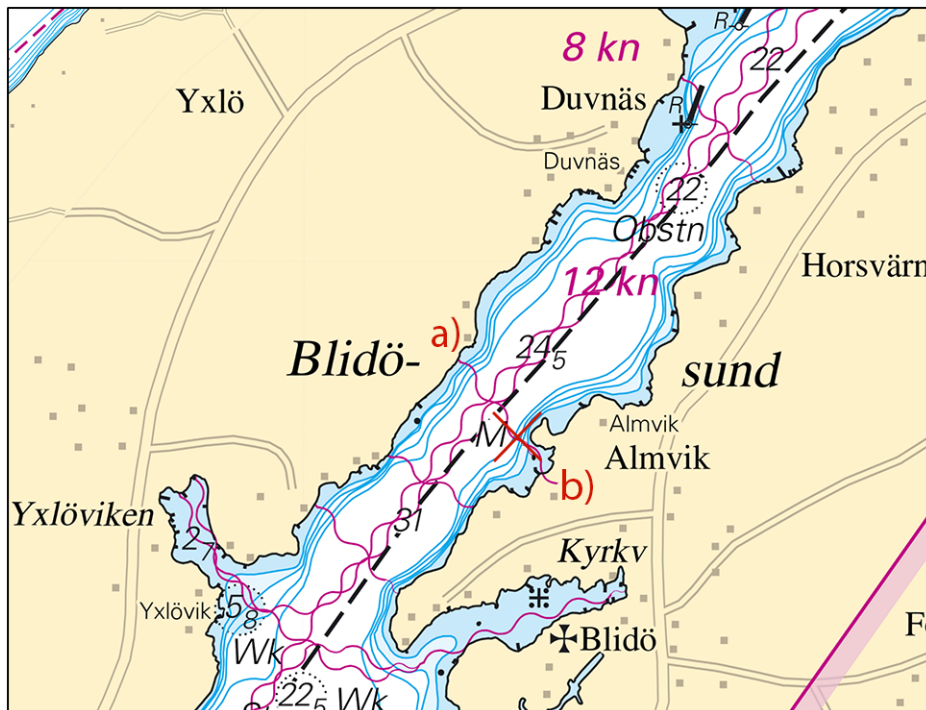
\* 16261

Chart: 612

Sweden. Northern Baltic. Stockholm archipelago. Yxlan. Removed cable.

<b>Delete</b>	cable between	a) and b)	a)	59-37,339N	018-52,999E
			b)	59-37,155N	018-53,273E

Bsp Stockholm N 2020/s28



Yxlan. Removal of cable

Baltic Offshore. Publ. 6 oktober 2021



\* 16264

Chart: 6141, 6142

**Sweden. Northern Baltic. Stockholm. Nacka. Kvarnholmen. Diving operations finished.**

Expired notices: 2021:874/16159(T)

Diving operations at Kvarnholmen are finished.

Kvarnholmen, north quay	59-19,09N	018-08,38E
-------------------------	-----------	------------

Bsp Mälaren - Hjälmarén 2020/s53, Bsp Stockholm M 2020/s07, s10

*Peab Anläggning AB. Publ. 4 oktober 2021***Lake Mälaren and Södertälje Canal**

\* 16127 (T)

Chart: 112

**Sweden. Lake Mälaren and Södertälje Canal. Lake Mälaren. River 'Fyrisån'. Rowing competition.**

Time: October 16, 2021 between 1200 and 1400 LT.

River 'Fyrisån' is closed between the below positions during the rowing competition 'Head of the Fyris'.

Starting line	59-47,22N	017-39,64E	Near 'Flottsundsbron' bridge
Finish line	59-48,91N	017-40,23E	At Ultuna

Not shown in ENC.

Bsp Mälaren - Hjälmarén 2020/s44

*UARS. Publ. 6 oktober 2021*

\* 16218 (T)

Chart: 6141

**Sweden. Lake Mälaren and Södertälje Canal. Stockholm. Långholmen. Reimersholme. Liljeholmsviken. Drilling operations.**

Period of time: October 18 - November 14.

Drilling operations in the marked areas in the chartlet. Mariners are requested to pass without causing swell.

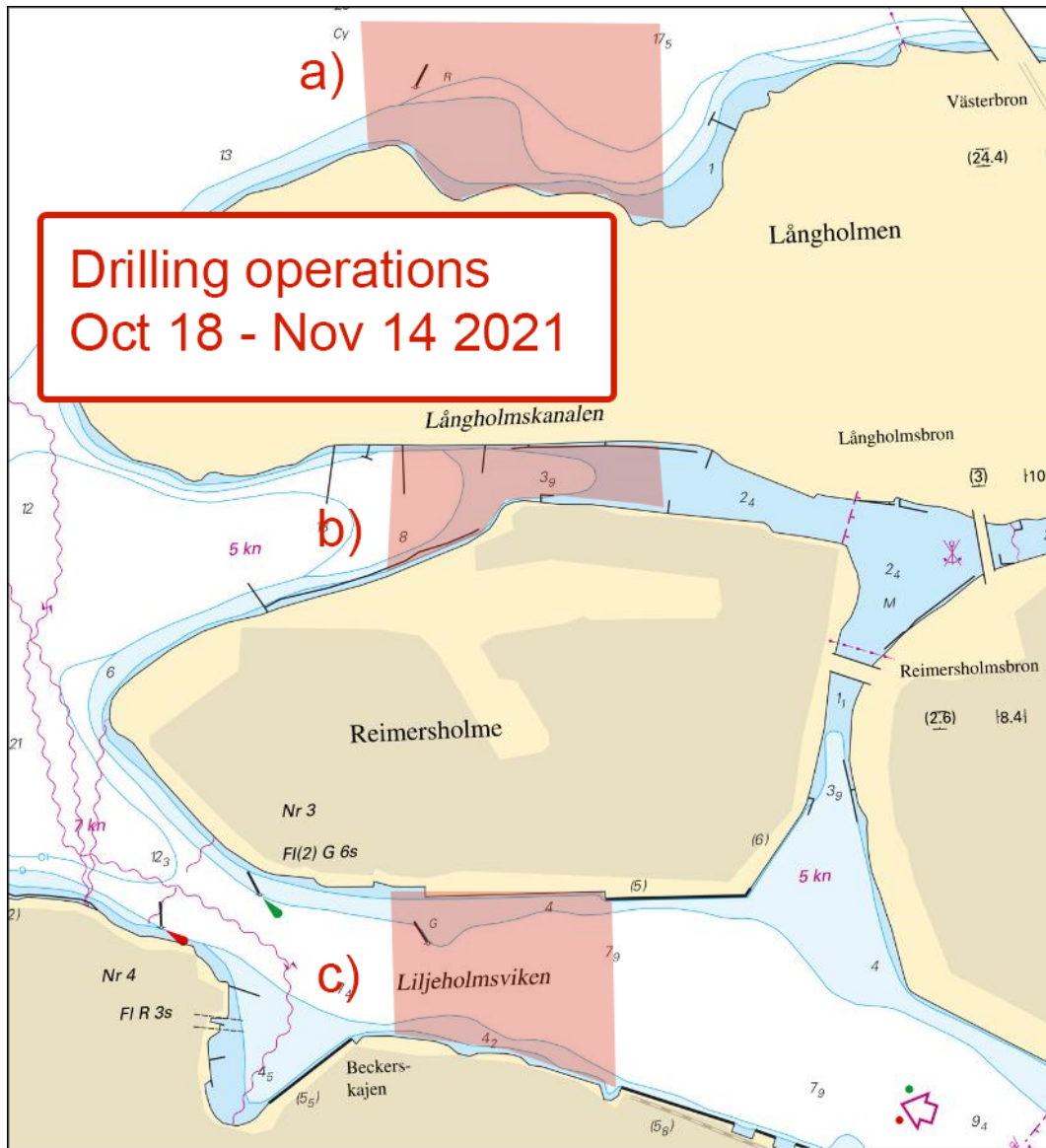
Participating unit is 'GILL'.

Contact: VHF Ch 16/68.

Contact drilling manager: +46 722 49 38 64.

Area 1	a)	59-19,41N	018-01,35E
Area 2	c)	59-19,20N	018-01,33E
Area 3	b)	59-18,97N	018-01,40E

Bsp Mälaren - Hjälmarén 2020/s51



Reimersholme. Liljeholmsviken. Drilling operations.

WSP. Publ. 6 oktober 2021

## Southern Baltic

\* 16162

Chart: 742

Sweden. Southern Baltic. SE of Karlshamn. NE of Tärnö. Svartaskärsbåden. Depth.

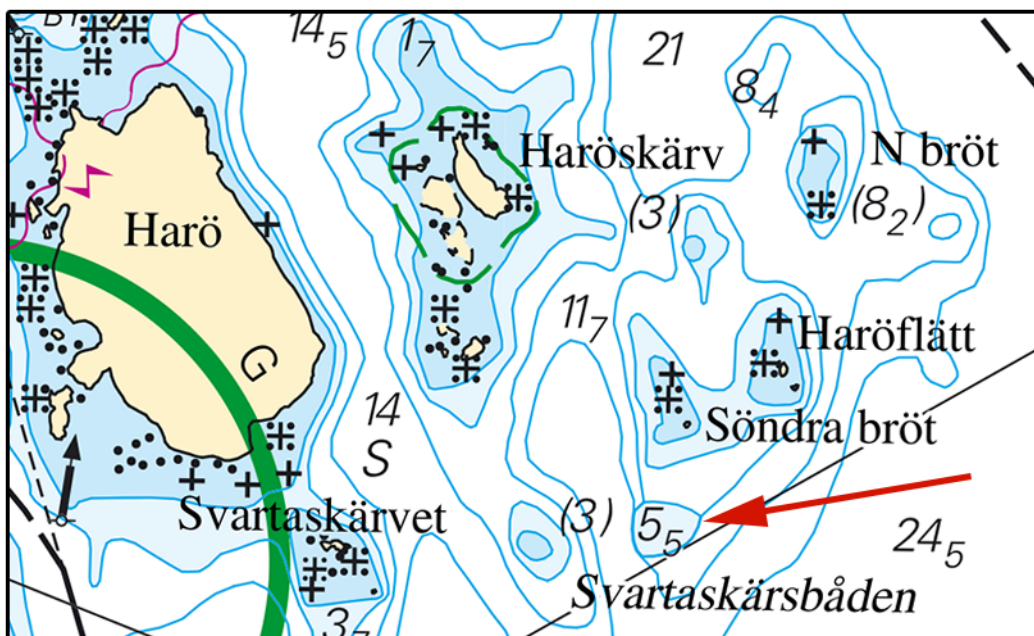
A hydrographic survey at Tärnö has shown other depths than charted.

The most important amendments are presented in the table below, and will be published in the next print of the affected chart.

The changes are available as an ENC update.

Insert	depth 5,5 encircled by a 6 m depth contour	a)	56-07,482N	015-00,326E	see chartlet
--------	--	----	------------	-------------	--------------

Bsp Hanöbukten 2018/s21



Svartaskärsbåden

Sjöfartsverket. Publ. 6 oktober 2021

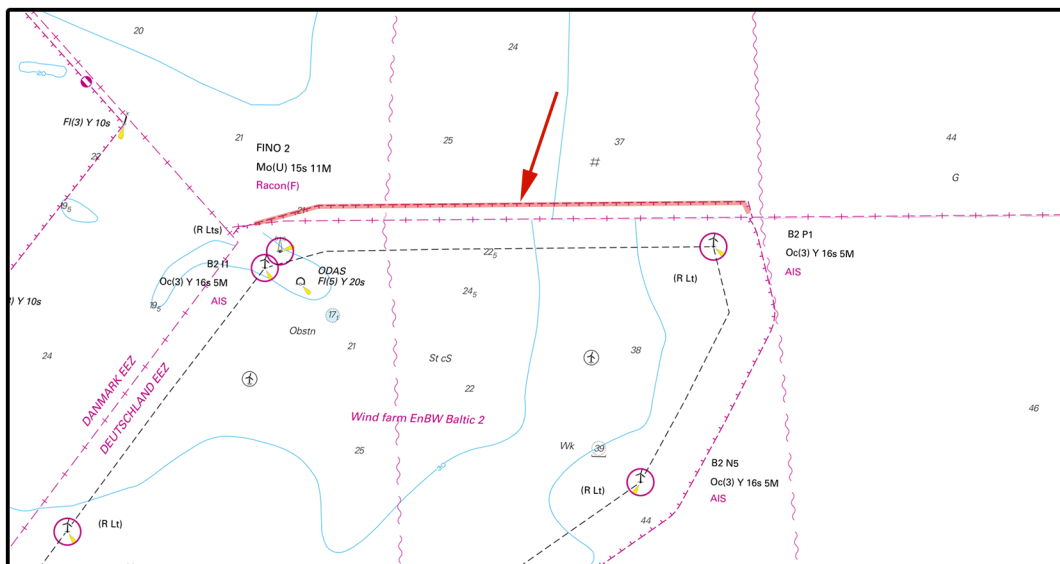
\* 16173

Chart: 7, 74, 8, 839

Sweden. Southern Baltic. E of Kriegers Flak. Limit of restricted area.

Delete	limit of restricted area from a) - d	a)	55-00,57N	013-08,92E
		b)	55-00,70N	013-09,64E
		c)	55-00,79N	013-14,06E
		d)	55-00,69N	013-14,10E

Bsp Sydkusten 2020/s03, s05



Kriegers Flak

Sjöfartsverket. Publ. 6 oktober 2021

\* 16268 (T)

Chart: 713

Sweden. Southern Baltic. Bergkvara. Bergkvara marina. Dredging. Marina closed.

Time: October 11 - December 12, 2021

Bergkvara marina will be closed for all traffic during the stated times due to dredging operations.

A silt curtain - clearly marked - will be laid out in the entrance to the harbour.  
For further information, call +46 705 225 276

Bergkvara marina	56-23,37N	016-05,46E
------------------	-----------	------------

Not shown in ENC.

Bsp Hanöbukten 2018/s08, s50, Bsp Kalmarsund 2019/s28, s46

MILMAN Miljöuddring. Publ. 6 oktober 2021

## Kattegat

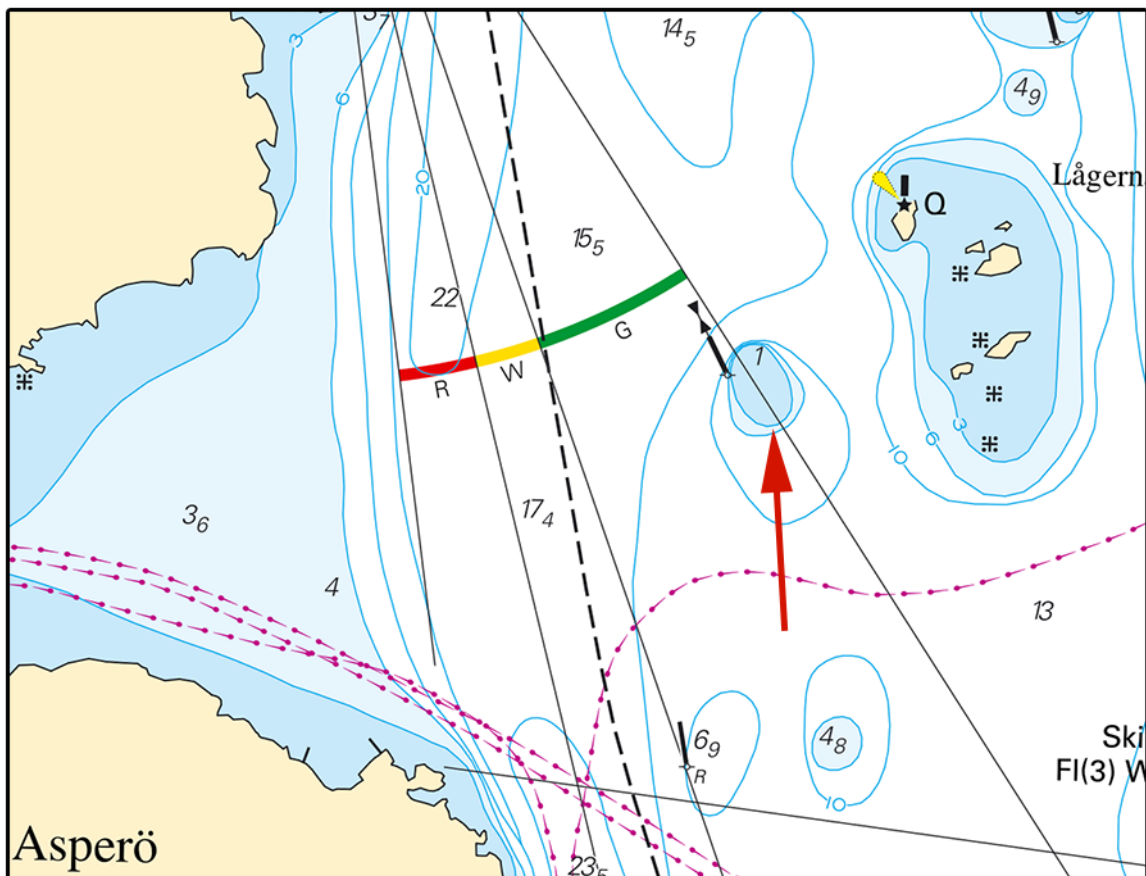
\* 16178

Chart: 9312, 9313

Sweden. Kattegat. Göteborg. E of Asperö. Lågerna. Depth.

Amend	3 m depth contour to position so that it reaches position	a)	57-39,272N	011-48,634E	see chartlet
-------	---	----	------------	-------------	--------------

Bsp Västkusten S 2019/s46, s47, s55, Bsp Västkusten S 2021/s46, s47, s55



Asperö

Sjöfartsverket, Norrköping. Publ. 6 oktober 2021

## Skagerrak

\* 16081

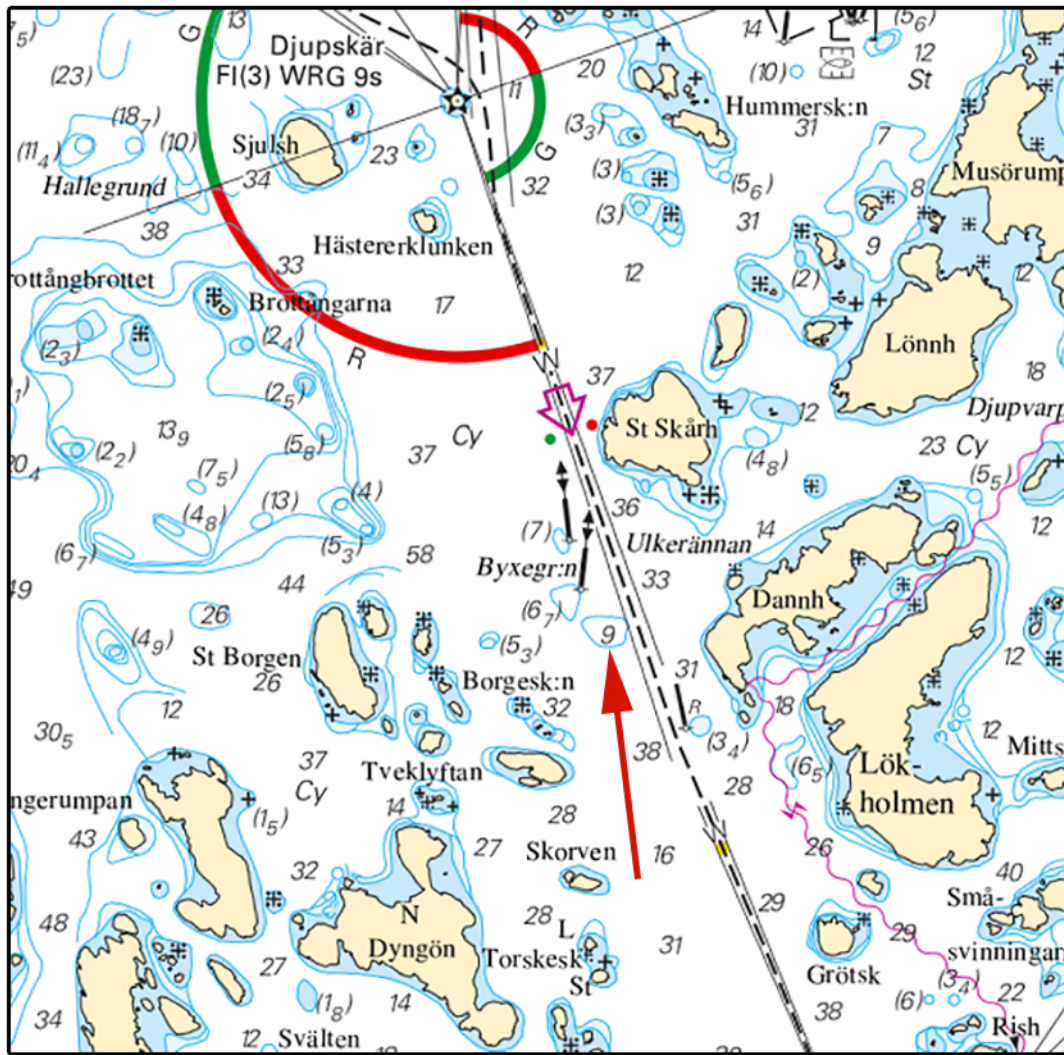
Chart: 934

Sweden. Skagerrak. Musöfjorden. S Otterön. Byxegrunden. Depth.

A hydrographic survey at Musön has shown other depths than charted.  
Important changes are presented in the table below, and will be printed in the next print of the affected chart.  
The changes are available as an ENC update.

Amend	depth (9,8) to 9	a)	58-37,092N	011-12,365E
-------	------------------	----	------------	-------------

Bsp Västkusten N 2021/s11, s13



Byxegrunden

Sjöfartsverket, Norrköping. Publ. 6 oktober 2021

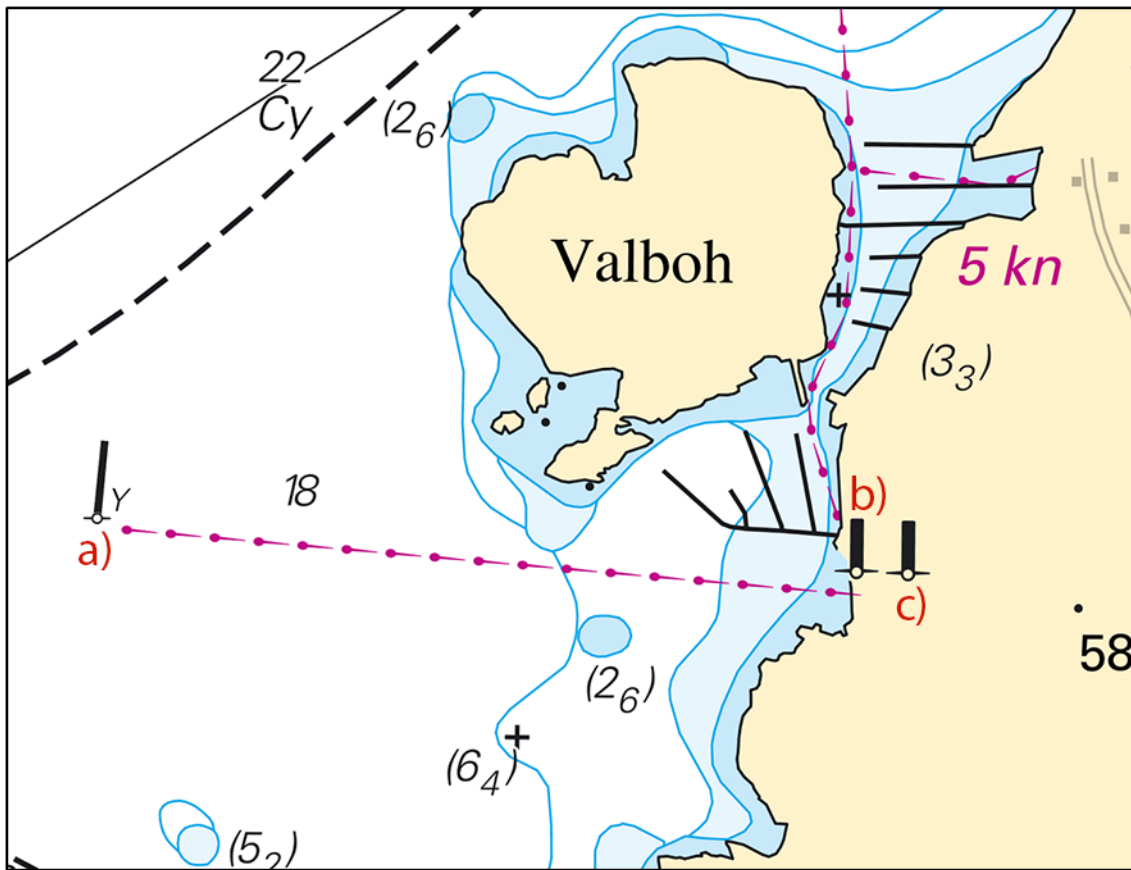
\* 16208

Chart: 933, 9331

Sweden. Skagerrak. Northwest of Lysekil. Valboholmen. Saltöfjord. Buoyage.

Replace	special purpose light spar buoy with	special purpose spar buoy	a)	58-17,165N	011-25,168E
Insert	beacon		b)	58-17,136N	011-26,098E
Insert	beacon		c)	58-17,137N	011-26,039E

Bsp Västkusten N 2021/s19, s29, s32



Lysekil. Saltöfjord

Transportstyrelsen. Publ. 6 oktober 2021

**Lake Vänern and Trollhätte Canal**

\* 16182

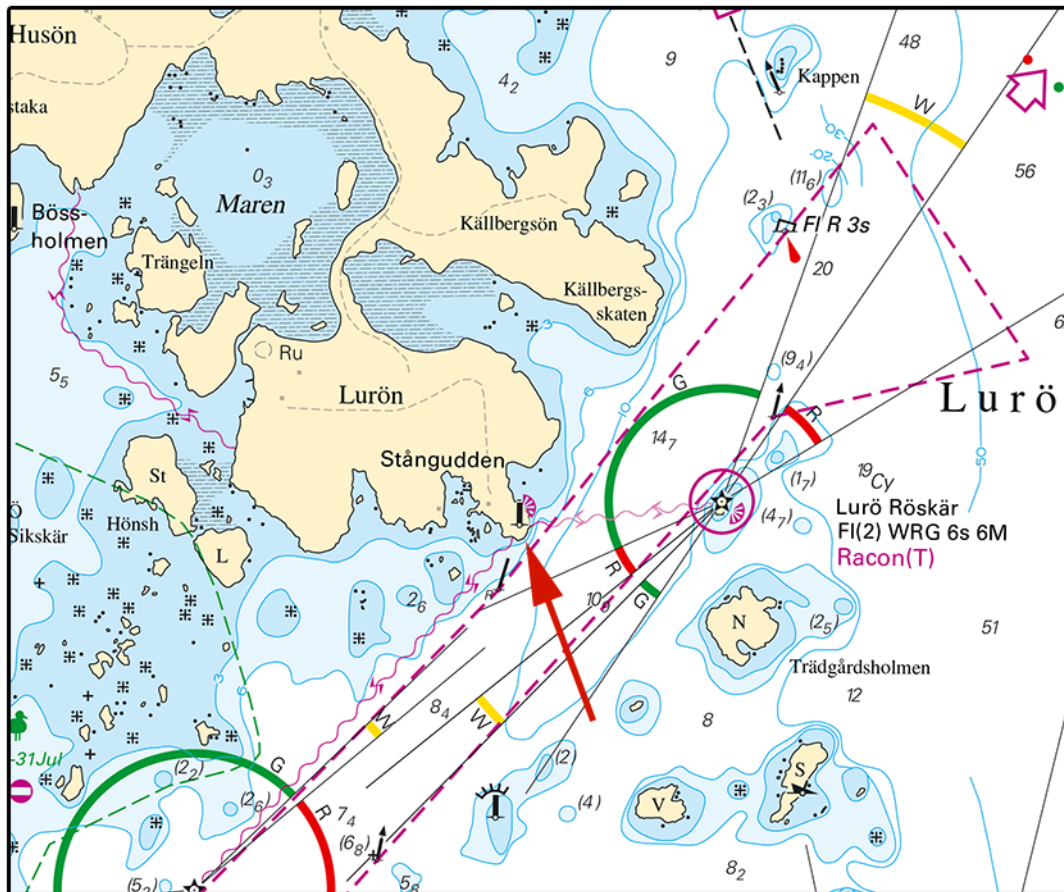
Chart: 13, 133, 1331, 135

Sweden. Lake Vänern and Trollhätte Canal. Luröleden. Light Stångudden extinguished. Beacon.

Expired notices: 2021:855/15517(T)

<b>Replace</b>	light 'Stångudden' with floodlit beacon	a)	58-47,385N	013-15,033E
----------------	---	----	------------	-------------

Bsp Göta kanal 2011/s37, s38, Bsp Vänern 2018/s06, s09, s26, s28, s41, s42



Stångudden

Sjöfartsverket. Publ. 6 oktober 2021

\* 16257 (T)

Chart: 13, 131, 132, 133, 1331, 134, 135, 1353

**Sweden. Lake Vänern and Trollhätte Canal. Seasonal check of buoyage delayed.**

Time: Until further notice

Every year, the Swedish Maritime Administration carries out major maintenance work to review aids to navigation along the Swedish coast. This work has been going on longer than expected in the waters around Lake Vänern. Seafarers are therefore urged to pay extra attention and caution when it comes to positions of floating fairway markers in Lake Vänern and the surrounding waters.

Mariners who notice that buoyage is out of position are encouraged to contact the Swedish Maritime Administration. Contact information is available on the website: [www.sjofartsverket.se](http://www.sjofartsverket.se)

Lake Vänern	58-50N	013-20E
-------------	--------	---------

Not shown in ENC.

Sjöfartsverket. Publ. 6 oktober 2021