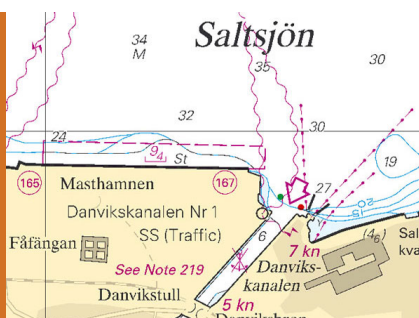


Notices to Mariners, SWEDEN Swedish Maritime Administration



Areas in Swedish Notices to Mariners



SJÖFARTSVERKET

Editorial office
Swedish Maritime Administration
Ufs
601 78 NORRKÖPING
Sweden
tel: 0771 630 605
e-mail: ufs@sjofartsverket.se
Publisher:
Hydrographer Patrik Wiberg

ANNOUNCEMENTS

No Announcements in this booklet.

NOTICES

Bay of Bothnia

* 16196 (T)

Chart: 4, 41, 415, 421

Sweden. Bay of Bothnia. E of Byske. Tåme. Firing exercises. Sep 20 - 29, 2021.

Position: Approx.	64-55N	021-30E	Tåme Firing practice area
-------------------	--------	---------	---------------------------

Firing exercises will be carried out at Tåme firing range during times listed below. During these times the charted danger area "R 58" is closed for navigation within stated distance from shore.

During firing a red balloon is shown from the observation towers. Further information on VHF channel 16, call Tåme skjutfält, or phone +46 921 348 405 alt. +46 921 349 100.

Date	Time	Range from shore
September 21	0800 - 1630 LT	2.7 M
September 22	0800 - 1800 LT	2.7 M
September 23	0800 - 2200 LT	6.5 M
September 24 - 26	0800 - 1700 LT	2.7 M
September 27	0800 - 2200 LT	2.7 M
September 28 - 29	0800 - 1800 LT	2.7 M

Not shown in ENC.

Bsp Bottenviken 2018/s06, s07, s37, s38, s39, s40, s41, s42, s44

Försvarsmakten. Publ. 15 september 2021

Northern Baltic

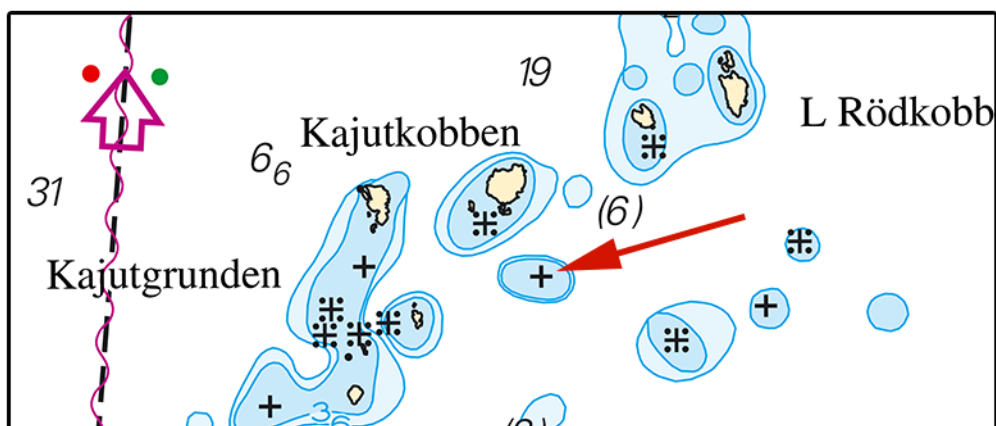
* 16085

Chart: 6144, 615

Sweden. Northern Baltic. Stockholm archipelago. N of Korsö. Kajutkobben. Underwater rock.

Insert	underwater rock encircled by 3- and 6 m depth contour	see chartlet	a)	59-18,591N	018-58,026E
--------	---	--------------	----	------------	-------------

Bsp Stockholm M 2020/s32, s52, Bsp Stockholm N 2020/s35, s41



Kajutkobben

Sjöfartsverket. Publ. 15 september 2021

* 16112

Chart: 612

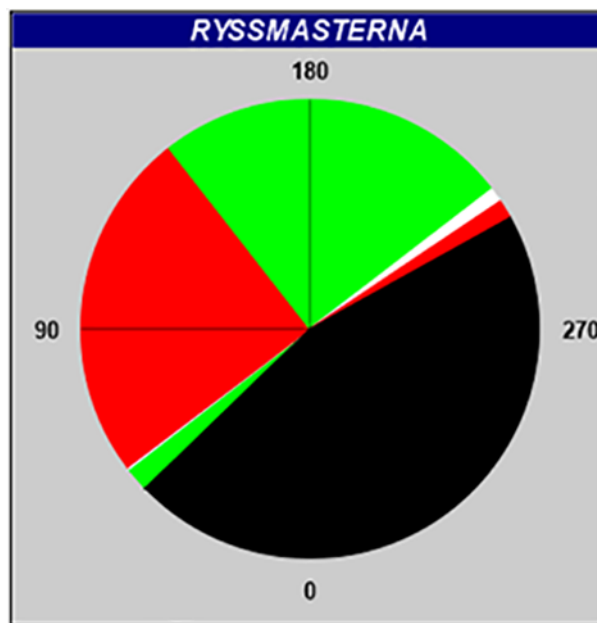
Sweden. Northern Baltic. Furusundsleden. Light 'Ryssmasterna'. Sectors.

The sectors of light 'Ryssmasterna' have been changed.
The sector data is presented in the table below.

Light 'Ryssmasterna' FI WRG 6s	59-31,897N	018-32,867E
--------------------------------	------------	-------------

Bearing (from sea towards the light)	Colour
46,0 - 52,3	G
52,3 - 52,9	W
52,9 - 142,0	R
145,0 - 232,5	G
232,5 - 236,2	W
236,2 - 241,0	R
236,2 - 241,0	Dk

Bsp Stockholm N 2020/s39



Sectors, Light 'Ryssmasterna'

Sjöfartsverket. Publ. 15 september 2021

Lake Mälaren and Södertälje Canal

* 16016

Chart: 111

Sweden. Lake Mälaren and Södertälje Canal. Mälaren. Alby. Hallunda. Vårby. Albysjön. Vertical clearance.

Amend	vertical clearance to 3.2 meters	59-15,028N	017-52,042E
-------	----------------------------------	------------	-------------

Bsp Mälaren - Hjälmaran 2020/s49

Trafikverket. Publ. 15 september 2021

* 16076

Chart: 111

Sweden. Lake Mälaren and Södertälje Canal. Eastern part of Mälaren. Kungshatt. Speed limit withdrawn.

Delete	speed restriction 7 knots	a)	59-17,56N	017-54,03E
--------	---------------------------	----	-----------	------------

Bsp Mälaren - Hjälmaran 2020/s49

Länsstyrelsen i Stockholms län. Publ. 15 september 2021

* 16194 (T)

Chart: 6141, 6142

Sweden. Lake Mälaren and Södertälje Canal. Stockholm. Riddarfjärden. Riddarholmen. Diving operations.

Period of time: September 1 - October 31

Diving operations by the western and southwestern quays of Riddarholmen. Mariners are requested to pass with caution.

Contact: phone +46 708-73 55 84.

Diving operations, northern limit	59-19,537N	018-03,632E
Diving operations, southern limit	59-19,405N	018-03,818E

Not shown in ENC.

Bsp Mälaren - Hjälmarén 2020/s51, s52

Sventab. Publ. 15 september 2021

*** 16201**

Chart: 1131

Sweden. Lake Mälaren and Södertälje Canal. Lake Mälaren. Bridge 'Kvicksundsbron'. Cable work is completed.

Expired notices: 2021:872/16116(T)

Work area approx pos	59-27,13N	016-19,13E
----------------------	-----------	------------

Bsp Mälaren - Hjälmarén 2020/s19, s20, s57

Jurstaholm Marine Support AB. Publ. 15 september 2021

Central Baltic

*** 16197 (T)**

Chart: 62, 71, 731

Sweden. Central Baltic. Gotland. SW of Visby. Tofta. Firing exercises September 20 - October 1, 2021.

Firing exercises will be carried out within Tofta firing range (R28) during stated times.

The area is supervised. Firing will be discontinued when vessels pass through the area.

Further information during firing: tel. +46 498 - 29 57 17.

Tofta firing range	57-34,8N	018-00,8E
--------------------	----------	-----------

Date	Time	Range from shore
September 20	1000 - 1500 LT	4.4 M
September 21 - 23	0900 - 1630 LT	4.4 M
September 24 - 25	0900 - 0000 LT	4.4 M
September 26 - 29	0900 - 1630 LT	4.4 M
September 30	0900 - 2300 LT	2.7 M
October 1	0900 - 1130 LT	2.7 M

Not shown in ENC.

Bsp Ostkusten 2019/s07, Bsp Ostkusten 2021/s07

Försvarsmakten. Publ. 15 september 2021

Southern Baltic

*** 16132**

Chart: 74, 742, 743, 83

Sweden. Southern Baltic. Hanöbukten. SE of Sölvesborg. Light 'Hällevik'. Character.

Amend	character of light 'Hällevik' to Fl 3s 9M	a)	56-00,533N	014-41,991E
--------------	---	----	------------	-------------

Adm. LoL C7550

Bsp Hanöbukten 2018/s04, s06, s22, s23, s25, s50, Bsp Sydkusten 2020/s03

Transportstyrelsen. Publ. 15 september 2021

The Sound

*** 16187**

Chart: 922

Sweden. The Sound. S of Höganäs. Skallören. Rosengrensgrund. Buoyage.

Insert	special spar buoy	56-11,255N	012-32,232E
--------	-------------------	------------	-------------

Bsp Sydkusten 2020/s10, s11

Transportstyrelsen. Publ. 15 september 2021

Kattegat

* 16193

Chart: 931, 9312, 9313

Sweden. Kattegat. Gothenburg. Älvsborgsfjorden. Fairway marker No 32.

Expired notices: 2020:796/14754(T)

Fairway marker number 32 in Gothenburg that had been damaged is now restored.

Fairway marker No 32, FI R 3s	57-41,086N	011-50,500E
-------------------------------	------------	-------------

Bsp Västkusten S 2019/s19, s47, s56, Bsp Västkusten S 2021/s19, s47, s56

Sjöfartsverket. Publ. 15 september 2021

* 16203 (T)

Chart: 92, 923, 924

Sweden. Kattegat. W of Halmstad. Ringenäs. Firing exercises. September 21.

Firing will take place at R41A Ringenäs firing range during stated times. The dangerous area extends from the shore according to the table below. A light on shore, VQ W, will be shown during firing.

For further information call +46 35 266 39 55, +46 35 536 77.

Date	Hours	Range
September 21	0900 - 1500 LT	2.4

Position: Approx.	56-40,8N	012-38,6E	Firing restriction area R41 A RINGENÄS
-------------------	----------	-----------	--

Not shown in ENC.

Bsp Västkusten S 2019/s28, s29, s30, Bsp Västkusten S 2021/s28, s29, s30

Försvarsmakten. Publ. 15 september 2021