

Notices to Mariners, SWEDEN Swedish Maritime Administration



Areas in Swedish Notices to Mariners



SJÖFARTSVERKET

Editorial office
Swedish Maritime Administration
Ufs
601 78 NORRKÖPING
Sweden
tel: 0771 630 605
e-mail: ufs@sjofartsverket.se
Publisher:
Hydrographer Patrik Wiberg

ANNOUNCEMENTS

No Announcements in this booklet.

NOTICES**Sea of Bothnia**

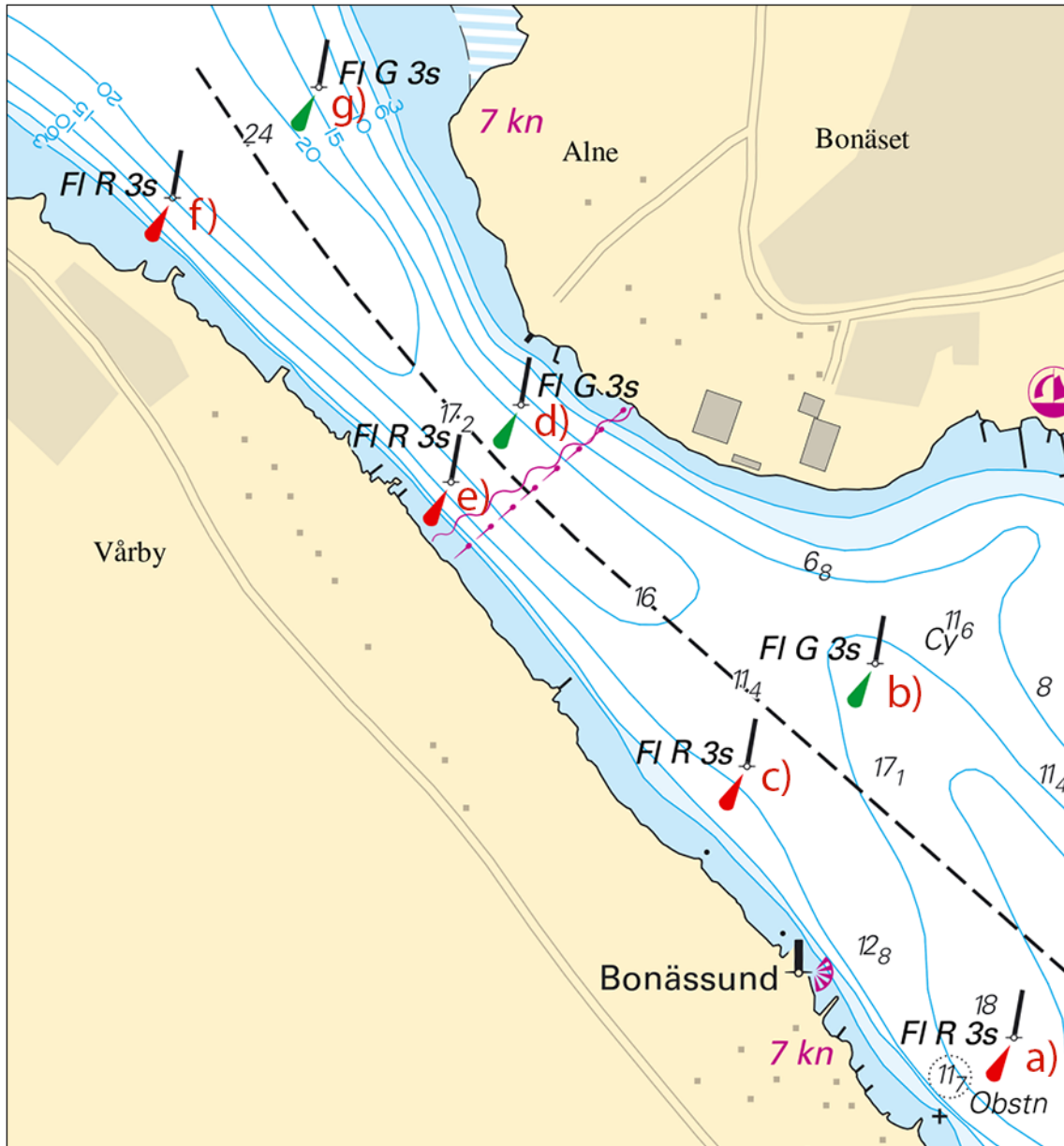
* 15999

Chart: 522

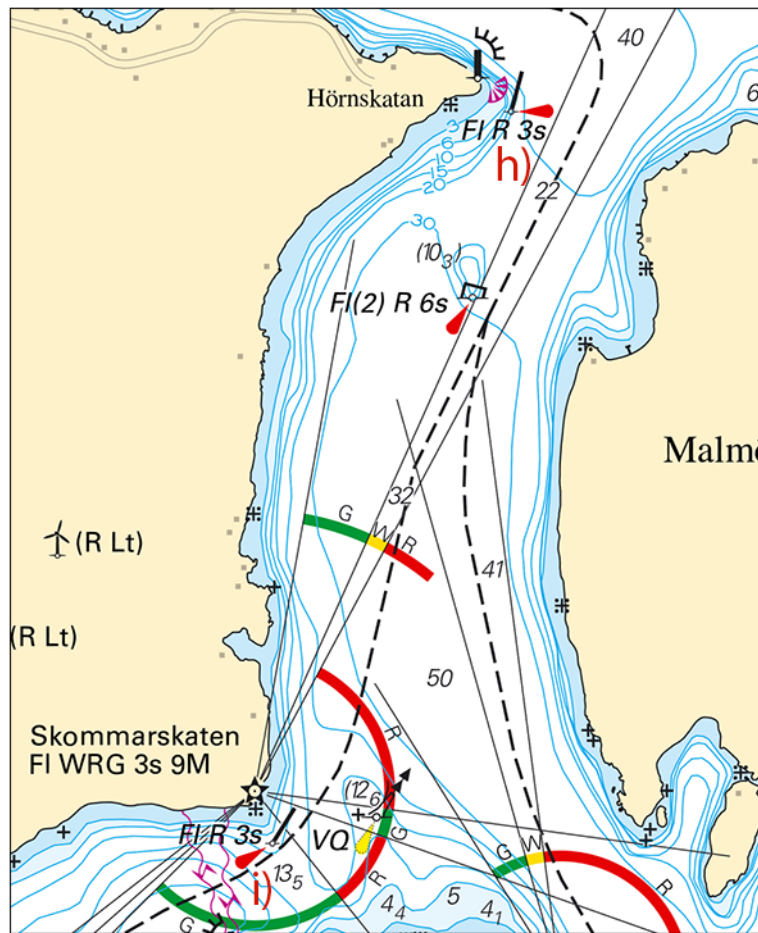
Sweden. Sea of Bothnia. Örnköldsvik. Bonässund. Hörnskatan. Skommarskatan. Buoyage.

Insert	port hand light spar buoy FI R 3s	a)	63-14,940N	018-46,710E
Insert	starboard light spar buoy FI G 3s	b)	63-15,230N	018-46,470E
Insert	port hand light spar buoy FI R 3s	c)	63-15,150N	018-46,250E
Insert	starboard light spar buoy FI G 3s	d)	63-15,430N	018-45,860E
Insert	port hand light spar buoy FI R 3s	e)	63-15,370N	018-45,740E
Insert	port hand light spar buoy FI R 3s	f)	63-15,590N	018-45,260E
Amend	starboard spar buoy to starboard light spar buoy FI G 3s	g)	63-15,676N	018-45,511E
Insert	port hand light spar buoy FI R 3s	h)	63-13,770N	018-54,270E
Amend	port hand spar buoy to port hand light spar buoy FI R 3s	i)	63-12,126N	018-53,084E

Bsp Bottenhavet N 2019/s20, s23, s51



Bonässund. Buoyage



Hörnskatan. Skommarskatan. Buoyage

Transportstyrelsen. Publ. 11 augusti 2021

Northern Baltic

* 16030 (T)

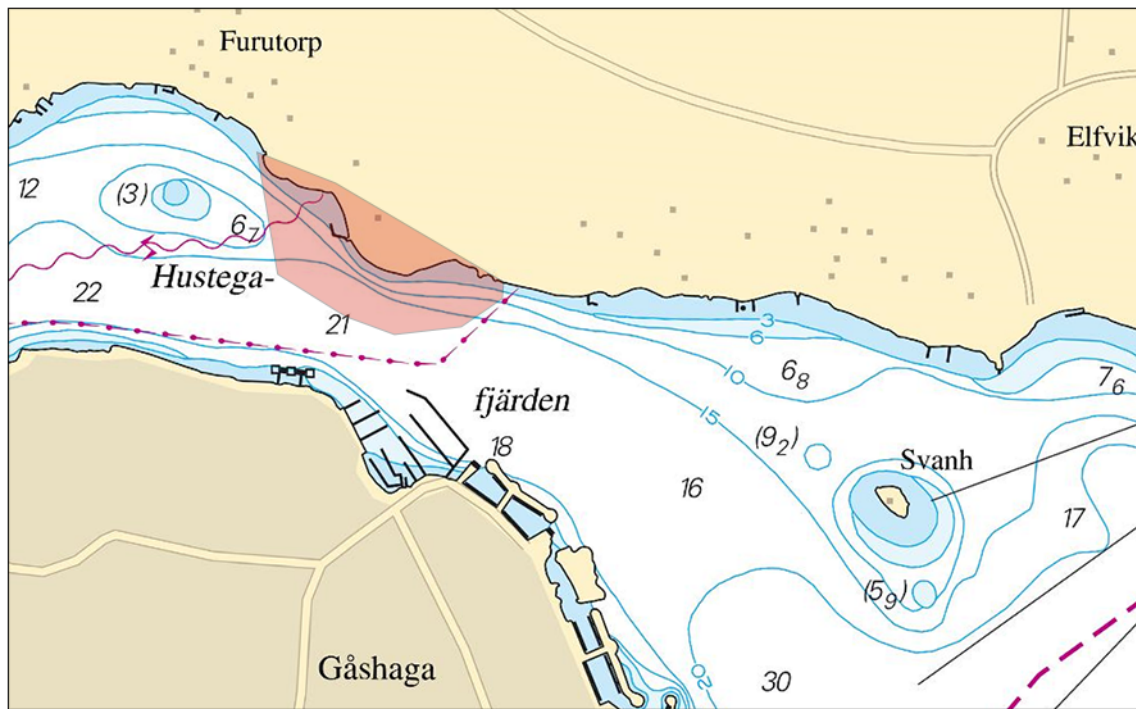
Chart: 6142

Sweden. Northern Baltic. Lidingö. Hustegafjärden. Restricted area.

Time: between August 21, 0800 LT and August 23, 1700 LT.
 An area in Hustegafjärden will be closed during above stated time.

Hustegafjärden	59-21,87N	018-13,50E
----------------	-----------	------------

Bsp Stockholm M 2020/s11, s13



Restricted area

Länsstyrelsen Stockholm. Publ. 11 augusti 2021

* 16096

Chart: 6143, 6144, 615

Sweden. Northern Baltic. Stockholm archipelago. WNW Sandhamn. Buoyage.

Delete	top mark on port-hand light spar buoy FI R 3s	59-18,016N	018-52,282E
--------	---	------------	-------------

Bsp Stockholm M 2020/s25

Sjöfartsverket. Publ. 11 augusti 2021

* 16097

Chart: 612

Sweden. Northern Baltic. Stockholm archipelago. Ljusterö huvud. Buoyage.

Amend	port-hand spar buoy to port-hand light spar buoy Q R	a)	59-29,490N	018-30,363E
-------	--	----	------------	-------------

Bsp Stockholm N 2020/s38, s39

Sjöfartsverket. Publ. 10 augusti 2021

* 16098

Chart: 611

Sweden. Northern Baltic. Stockholm archipelago. SW Tjärven. Buoyage.

Amend	starboard-hand spar buoy to starboard-hand light spar buoy FI(2) G 6s	a)	59-46,074N	019-20,685E
-------	---	----	------------	-------------

Bsp Stockholm N 2020/s08, s27

Sjöfartsverket. Publ. 11 augusti 2021

* 16099

Chart: 6212

Sweden. Northern Baltic. Norrköping. Lindökanalen. Leading lights operational.

Expired notices: 2021:869/16083(T)

Leading lights in Lindökanalen are operational.

Nr 3	a)	58-36,986N	016-14,811E
Nr 5	b)	58-36,854N	016-14,467E
Nr 7	c)	58-36,679N	016-14,148E
Nr 9	d)	58-36,483N	016-13,847E

Bsp Ostkusten 2019/s26, s58, s59, Bsp Ostkusten 2021/s26, s58, s59

Sjöfartsverket, Norrköping Publ. 9 augusti 2021

Lake Mälaren and Södertälje Canal

* 16062

Chart: 111

Sweden. Lake Mälaren and Södertälje Canal. Järfälla. Skäftingeholmen, Lövhölmén. Speed restriction.

Insert	speed restriction 3 kn	a)	59-25,08N	017-45,68E
--------	------------------------	----	-----------	------------

Bsp Mälaren - Hjälmarén 2020/s48

Länsstyrelsen Stockholm. Publ. 10 augusti 2021

* 16106 (T)

Chart: 113, 1133

Sweden. Lake Mälaren and Södertälje Canal. Lake Mälaren. Märsön. Tedarö. Mälärprojektet. Buoyage.

In connection with project 'Mälärprojektet' light Tedarö has been extinguished and buoyage temporarily laid out.

light Tedarö FI(2) 6s extinguished	a)	59-31,199N	016-59,101E
starboard-hand light buoy VQ G	b)	59-31,163N	016-59,157E

Not shown in ENC.

Bsp Mälaren - Hjälmarén 2020/s23, s62

Wasa Dredging. Publ. 11 augusti 2021

* 16107 (T)

Chart: 1131

Sweden. Lake Mälaren and Södertälje Canal. Lake Mälaren. S of Biskopshamn. Utmärkning.

See: 2021:870/16092(T)

Existing buoy 'Biskopshamn Q G' is temporary relocated towards the fairway in connection with dredging work.

temporary position light buoy 'Biskopshamn Q G'	a)	59-27,533N	016-10,864E	ordinary pos 59 27,591 N 016 - 10,952 E
new temporary green buoy	b)	59-27,627N	016-11,141E	

Bsp Mälaren - Hjälmarén 2020/s18

Wasa Dredging. Publ. 11 augusti 2021

* 16108 (T)

Chart: 113, 1131

Sweden. Lake Mälaren and Södertälje Canal. Lake Mälaren. W of Ridön. Dredging. Buoyage.

Time: Until further notice

Dredging and underwater blasting are conducted in the fairway W of Ridön - Flaten.

Work is performed by dredger TOSTE R.

Contact VTS Mälaren on Ch 68 for updated information.

Two green buoys have been deployed to delineate the working area. Existing green buoy has been moved 15 m to the west.

Flaten		59-30,8N	016-35,1E
Green buoy marker 1	a)	59-30,52N	016-35,06E
Green buoy marker 2	b)	59-30,56N	016-35,13E
Existing green spar buoy - temporary position	c)	59-30,567N	016-35,033E

Not shown in ENC.

Bsp Mälaren - Hjälmarén 2020/s21, s56

Wasa Dredging. Publ. 11 augusti 2021

Southern Baltic

* 15990

Chart: 71, 714, 74, 741, 7411, 83

Sweden. Southern Baltic. Blekinge. Karlskrona. Hasslö. Tjurkö. Inlängan. Lights withdrawn.

Delete	light Oc R 3s 6M		a)	56-06,036N	015-28,487E
Delete	light Oc R 3s 6M		b)	56-06,165N	015-28,415E
Replace	leading line 2 Oc R 342,7	with recommended track	c)	56-04,025N	015-29,647E
Delete	light Tjurkö nedre F WRG (occas)		d)	56-06,239N	015-37,849E
Delete	light Tjurkö övre F (occas)	and associated leading line	e)	56-06,315N	015-37,870E
Amend	light Flundrebåden Q WRG to beacon		f)	56-02,570N	015-46,626E
Amend	light Flöjten FI WRG 3s to beacon		g)	56-02,520N	015-46,003E
Amend	light Asla FI(3) WRG 9s to beacon		h)	56-05,691N	015-25,635E
Delete	light F WRG (occas)		i)	56-06,806N	015-26,282E
Delete	light Iso (occas)	and associated leading line	j)	56-06,654N	015-25,682E
Delete	light Q (occas)	and associated leading line	k)	56-06,852N	015-25,657E

Adm. LoL C7438-4

Adm. LoL C7438-8

Adm. LoL C7451-4

Adm. LoL C7451-5

Adm. LoL C7454

Adm. LoL C7454-1

Adm. LoL C7455

Adm. LoL C7453-4

Adm. LoL C7453-6

Adm. LoL C7453-7

Bsp Hanöbukten 2018/s15, s16, s17, s19, s34, s35, s38, s41, s51

Transportstyrelsen. Publ. 11 augusti 2021

*** 15997 (T)****Chart: 7, 74, 742, 743, 8, 83****Sweden. Southern Baltic. S of Åhus. Ravlunda. Firing exercises. August 23 - 26, 2021.**

Position: Approx.	55-46N	014-20E	Firing restriction area R34 RAVLUNDA
-------------------	--------	---------	--------------------------------------

Restriction area R34 will be closed for traffic during stated times.

During exercise orange quick light, Q Or, is shown from shore.

For further information call "Ravlunda skjutfält" on VHF Ch 16/68 or call +46 44-35 10 32.

Date	Hours	Range
August 23 - 26	0900 - 1500 LT	11,9 M

Not shown in ENC.

Bsp Hanöbukten 2018/s06, s07, s24, s25, s26, s27, s28, s29, s30, s31, s32, s33, Bsp Sydkusten 2020/s06, s07, s29

Försvarsmakten, Södra Skånska Regementet, Södra Sandby. Publ. 10 augusti 2021

*** 15998 (T)****Chart: 74, 83, 839****Sweden. Southern Baltic. E of Ystad. Kabusa. Firing exercises. August 24 - 31, 2021.**

Position: Approx.	55-23N	013-57E	Firing restricted area R55A KABUSA
-------------------	--------	---------	------------------------------------

Restricted area R55A will be closed for vessels during stated times.

For further information call "Kabusa skjutfält" on VHF Ch 16/68 or call +46 411-55 06 52.

Date	Hours	Range
August 24 - 25	0930 - 1700 LT	2.7 M
August 30	1300 - 1900 LT	4.4 M
August 31	0900 - 1900 LT	4.4 M

Not shown in ENC.

Bsp Sydkusten 2020/s06, s27, s28

Försvarsmakten, Södra Skånska Regementet, Södra Sandby. Publ. 11 augusti 2021

Kattegat

* 16104 (T)

Chart: 92, 923, 924

Sweden. Kattegat. W of Halmstad. Ringenäs. Firing exercise. August 16 -19.

Firing will take place at R41A Ringenäs firing range during stated times. The dangerous area extends from the shore according to the table below. A light on shore, VQ W, will be shown during firing.

For further information call +46 35 266 39 55, +46 35 536 77.

Date	Hours	Range
August 16 - 19	0900 - 1600 LT	1,7 M

Position: Approx.	56-40,8N	012-38,6E	Firing restriction area R41 A RINGENÄS
-------------------	----------	-----------	--

Not shown in ENC.

Bsp Västkusten S 2019/s28, s29, s30, Bsp Västkusten S 2021/s28, s29, s30

Försvarsmakten. Publ. 11 augusti 2021