

Notices to Mariners, SWEDEN Swedish Maritime Administration



Areas in Swedish Notices to Mariners



SJÖFARTSVERKET

Editorial office
Swedish Maritime Administration
Ufs
601 78 NORRKÖPING
Sweden
tel: 0771 630 605
e-mail: ufs@sjofartsverket.se
Publisher:
Hydrographer Patrik Wiberg

ANNOUNCEMENTS

* 16090

Chart: 624, 6241

New print of charts. New edition of chart 624 and 6241.

A new edition of the following nautical charts are available from August 2021:

Chart	Edition
624	9.0 NEW EDITION
6241	9.0 NEW EDITION

A NEW EDITION is a print of an existing chart, containing changes significant to navigation which are not possible to fully describe in the Swedish NtM.

Sjöfartsverket, Norrköping. Publ. 4 augusti 2021

NOTICES

Gulf of Finland

* 15982 (T)

Chart: 61, 62, 7, 71, 731, 74, 83

Sweden. Northern Baltic, Gulf of Finland, Central Baltic, South-Eastern Baltic, Southern Baltic. E of Gotland - E of Norra Midsjöbanken - S of Karlskrona. Nord Stream 2 gas pipeline. Surveys.

Time: August 4 - 20, 2021 (tentative)

A survey of gas pipelines 'Nord Stream 2' will be conducted within Swedish EEZ.

Surveys will be performed by vessels 'SSV Baltic Explorer', 'SSV Marlin' and 'Marlin'.

EEZ-border Finland	58-53,75N	020-27,10E
EEZ-border Denmark	55-31,95N	015-44,64E

Not shown in ENC.

Nord Stream 2 AG. Publ. 4 augusti 2021

Northern Baltic

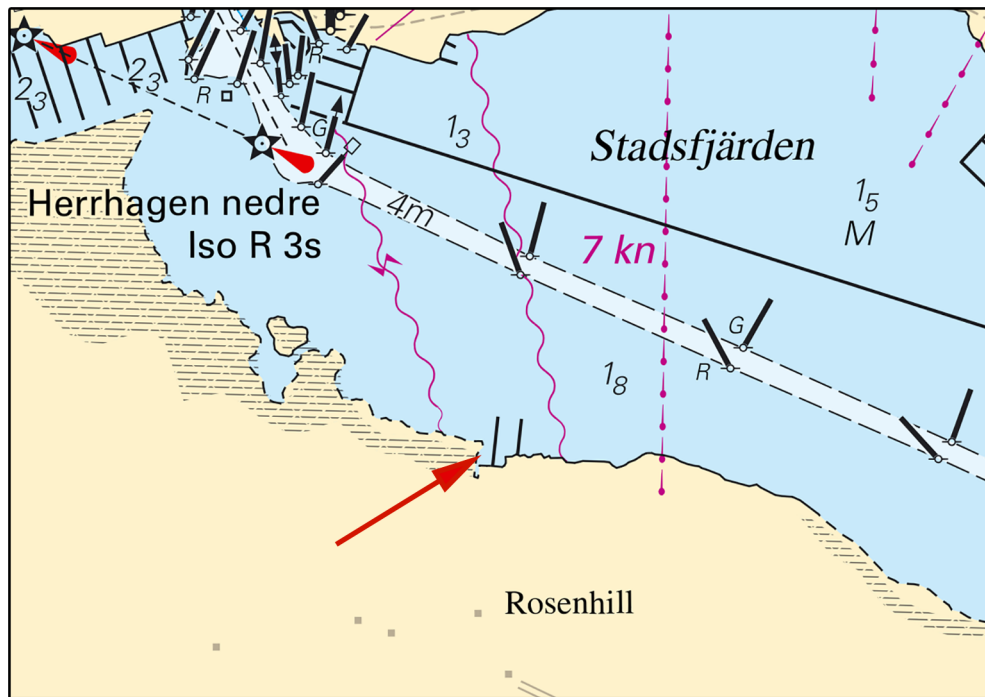
* 15978

Chart: 6211

Sweden. Northern Baltic. Nyköping. Rosenhill. Jetties.

Insert	jetty between positions a) and b)	a)	58-44,288N	017-01,532E
		b)	58-44,330N	017-01,541E
Insert	jetty between positions c) and d)	c)	58-44,298N	017-01,572E
		d)	58-44,328N	017-01,579E

Bsp Ostkusten 2019/s18, Bsp Ostkusten 2021/s18



Jetties, Rosenhill

L&P Consulting AB. Publ. 4 augusti 2021

* 16021 (T)

Chart: 10, 61, 616, 6162, 6163, 62

Sweden. Northern Baltic. E of Utö. Firing exercises. August 17 - September 11.

Position: Approx.	58-54N	018-20E	Utö Firing practice area
-------------------	--------	---------	--------------------------

Firing exercises will be carried out within Utö firing range during stated times. The current extension of the closed area is given in the table.

Signal ammunition is used during hours of darkness.

Information during practice times VHF channel 16, call Utö skjutfält, or phone +46 8 501 570 45. Utö firing range office, phone: +46 10-823 81 08. Information about upcoming practice times, phone: +46 10 823 18 23, Muskö Sjöcentral.

Date	Time	Range from shore
August 17-19	0900 - 2000 LT	2.3 M
August 23	1230 - 2000 LT	2.3 M
August 24-26	0900 - 2000 LT	2.3 M
August 30	1230 - 2000 LT	2.3 M
August 31 - September 2	0900 - 2000 LT	2.3 M
September 6	1000 - 2000 LT	3.8 M
September 7	0900 - 2000 LT	3.8 M
September 8-9	0900 - 1800 LT	4.2 M
September 10	0900 - 1800 LT	3.8 M
September 11	0900 - 1800 LT	2.3 M

Not shown in ENC.

BSP Stockholm S 2020/s04, s05, s13, s17, s18, s19, s35, s37

Försvarsmakten. Publ. 4 augusti 2021

Lake Mälaren and Södertälje Canal

* 16014 (T)

Chart: 113, 1131

Sweden. Lake Mälaren and Södertälje Canal. Lake Mälaren. Bridge 'Kvicksundsbron'. Restricted passage. August 11 - 12, 2021.

Time: August 11 - 12, 2000 LT - 0800 LT

The fairway past bridge 'Kvicksundsbron' is closed for all vessels in need of bridge opening.

Bridge 'Kvicksundsbron'	59-27,16N	016-19,16E
-------------------------	-----------	------------

Not shown in ENC.

Bsp Mälaren - Hjälmarén 2020/s19, s20, s57

Trafikverket/Sjöfartsverket. Publ. 3 augusti 2021

* 16087

Chart: 1131

Sweden. Lake Mälaren and Södertälje Canal. Lake Mälaren. Nyckelön. Overhead cable.

Delete	overhead cable and notation on vertical clearance	59-28,69N	016-18,85E
--------	---------------------------------------------------	-----------	------------

Bsp Mälaren - Hjälmarén 2020/s19

Sjöfartsverket. Publ. 4 augusti 2021

* 16092 (T)

Chart: 113, 1131

Sweden. Lake Mälaren and Södertälje Canal. Lake Mälaren. Fiskarstenarna - Tallklubben. Stora Galtryggen. Underwater blasting. Dredging.

Time: Until further notice

Dredging and underwater blasting are conducted in the fairways between Fiskarstenarna - Tallklubben (Skylgrund) and at Stora Galtryggen.

Work is performed by backhoe dredgers BOULDER and HARALD.

Contact VTS Mälaren on Ch 68 for updated information.

Two red buoys are deployed at Stora Galtryggen to delineate the working area.

Fiskarstenarna	a)	59-27,34N	016-09,09E
Tallklubben	b)	59-27,60N	016-12,51E
Stora Galtryggen	c)	59-27,08N	016-13,60E
Red buoy marker 1	d)	59-27,255N	016-13,357E
Red buoy marker 2	e)	59-26,965N	016-13,990E

Not shown in ENC.

Bsp Mälaren - Hjälmarén 2020/s17, s18

Wasa Dredging. Publ. 4 augusti 2021

Central Baltic

* 16069

Chart: 712

Sweden. Central Baltic. Kalmar. Varvsholmen. Slipkajen. Buoyage.

Insert	special purpose spar buoy	a)	56-40,096N	016-22,623E
Insert	special purpose spar buoy	b)	56-40,084N	016-22,644E

Bsp Kalmarsund 2019/s34, s35

Transportstyrelsen. Publ. 3 augusti 2021

* 16084

Chart: 6231

Sweden. Central Baltic. Västervik. Skeppsbrofjärden. Buoyage withdrawn.

Delete	port hand spar buoy	a)	57-45,451N	016-38,994E
--------	---------------------	----	------------	-------------

Bsp Kalmarsund 2019/S43, Bsp Ostkusten 2019/s62, Bsp Ostkusten 2021/s62

Transportstyrelsen, Norrköping. Publ. 4 augusti 2021

Southern Baltic

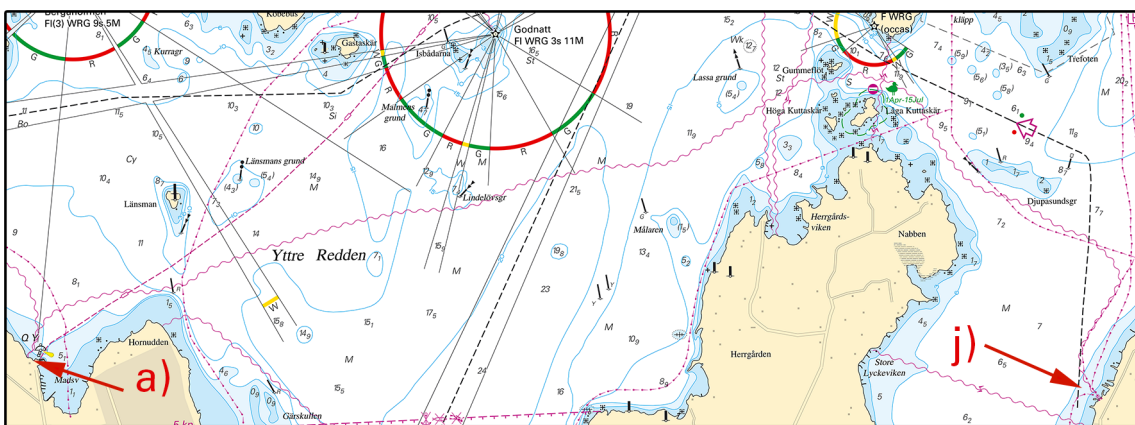
* 15952

Chart: 7411, 7413

Sweden. Southern Baltic. Karlskrona. Sturkö. Aspö. Submarine cable.

Insert	submarine cable between a) - j)	a)	56-07,46N	015-32,97E
		b)	56-07,62N	015-33,12E
		c)	56-07,93N	015-35,46E
		d)	56-08,08N	015-36,67E
		e)	56-08,32N	015-37,51E
		f)	56-08,27N	015-38,07E
		g)	56-07,95N	015-38,53E
		h)	56-07,70N	015-39,24E
		i)	56-07,41N	015-39,00E
		j)	56-07,30N	015-39,12E

Bsp Hanöbukten 2018/s41, s43



Submarine cable, Karlskrona

Caliterra AB. Publ. 4 augusti 2021

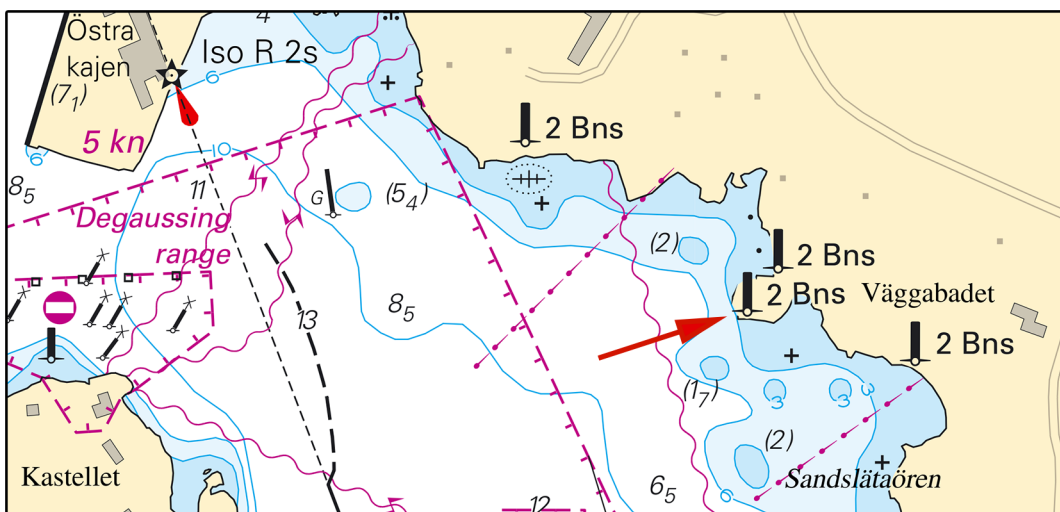
* 15958

Chart: 7421

Sweden. Southern Baltic. Karlshamn. Vägghadet. Beacons.

Insert	beacon and text '2 Bns'	a)	56-09,691N	014-52,548E
--------	-------------------------	----	------------	-------------

Bsp Hanöbukten 2018/s47



Karlshamn

Sjöfartsverket. Publ. 4 augusti 2021

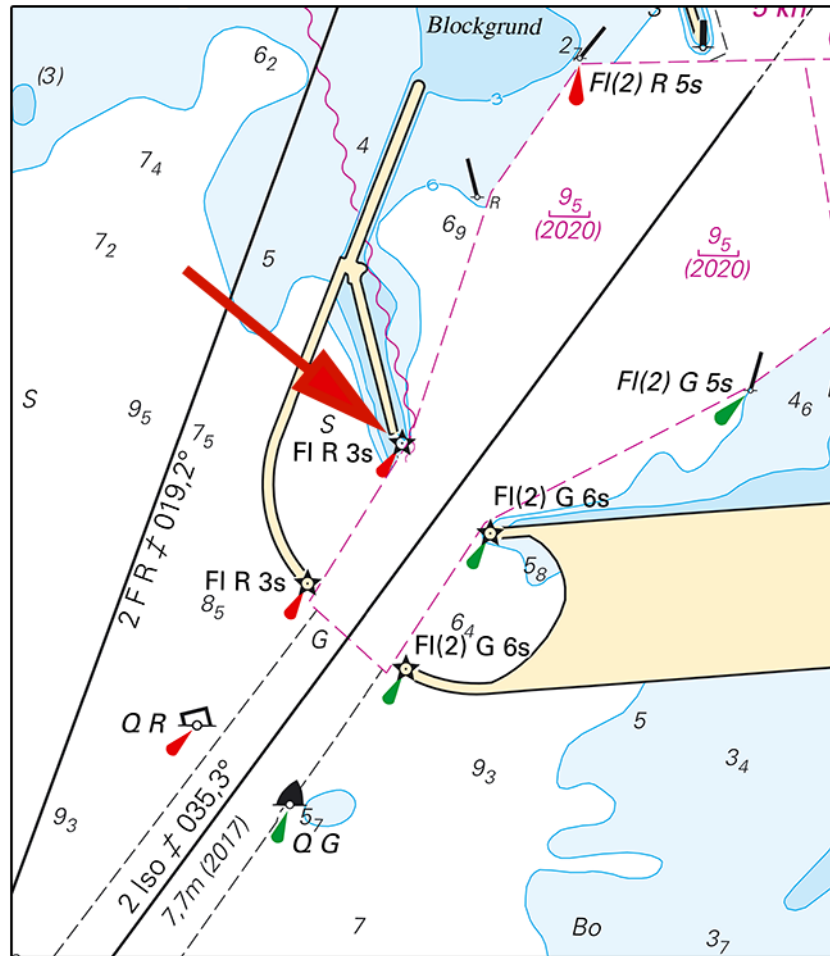
* 16000

Chart: 839

Sweden. Southern Baltic. Ystad. Buoyage. Light.

Delete	port hand light spar buoy FI R 3s	a)	55-25,040N	013-49,011E
Insert	light FI R 3s	b)	55-25,071N	013-48,990E

Bsp Sydkusten 2020/s27, s52



Ystad

Transportstyrelsen. Publ. 4 augusti 2021