

## Notices to Mariners, SWEDEN Swedish Maritime Administration



### Areas in Swedish Notices to Mariners



**SJÖFARTSVERKET**

Editorial office  
Swedish Maritime Administration  
Ufs  
601 78 NORRKÖPING  
Sweden  
tel: 0771 630 605  
e-mail: [ufs@sjofartsverket.se](mailto:ufs@sjofartsverket.se)  
Publisher:  
Hydrographer Patrik Wiberg



## ANNOUNCEMENTS

\* 15972

Chart: 111

### Revocation of chart 111 Ed 12.0 purchased between May 14 - June 11, 2021.

The Swedish Maritime Administration is revoking chart 111 Ed.12.0 sold between 2021-05-14 and 2021-06-11.

If you have purchased a copy of this chart, you are recommended to contact your retailer or the Swedish Maritime Administration at SMA@sjofartsverket.se for instructions how to have your copy replaced free of charge.

*Sjöfartsverket, Norrköping. Publ. 14 juni 2021*

## NOTICES

### Bay of Bothnia

\* 15977

Chart: 4101

### Sweden. Bay of Bothnia. Luleå. Bridge 'Bergnäsbron'. Note 238 amended.

Amend	note 238	Chart 4101 and small craft chart Bottenviken page 71
-------	----------	--

Bsp Bottenviken 2018/s71

#### Note 238

##### THE BRIDGE AT BERGNÄSET

The bridge is opened once between 0900 - 1000 LT and 1900 - 2000 LT on weekdays except holidays (red-letter days) and day before Sunday. Bridge opening shall be ordered at least **three hours prior** to passage.  
Contact details: [www.sjofartsverket.se](http://www.sjofartsverket.se)

##### Bridge signals

<b>Iso R</b>	Bridge closed
<b>Iso R + Iso W</b>	Vessel acknowledged
<b>Iso R + FW</b>	Bridge is about to be opened
<b>Iso G</b>	Bridge open ->> proceed
<b>FR + FW</b>	Bridge can not be opened

##### BERGNÄSBRON

Broöppning sker vid ett tillfälle mellan kl 0900 - 1000, 1900 - 2000 vardagar utom dag före söndag och helgdag.

Broöppning beställs minst **tre timmar i förväg**.  
Kontaktinformation: [www.sjofartsverket.se](http://www.sjofartsverket.se)

##### Brosignaler

<b>Iso R</b>	Bron stängd
<b>Iso R + Iso W</b>	Fartyg siktat
<b>Iso R + FW</b>	Bron öppnas
<b>Iso G</b>	Bron öppen ->> passera
<b>FR + FW</b>	Bron kan ej öppnas

*Note 238*

*Trafikverket. Publ. 16 juni 2021*

\* 15981

Chart: 4151

### Sweden. Bay of Bothnia. Piteå. Bridge 'Pitsundsbron'. Note 237 amended.

Amend	note 237	Chart 4151 and small craft chart Bottenviken page 71
-------	----------	--

Bsp Bottenviken 2018/s71

**Note 237****THE BRIDGE AT PITSUNDET**

The bridge is opened for vessels that requires a vertical clearance greater than 13,5 m.

Bridge opening is ordered weekdays between 0630-1530 LT at least **three hours before** passage.

Contact details: [www.sjofartsverket.se](http://www.sjofartsverket.se)

The bridge-keeper monitors VHF Ch 13 during bridge opening.

**PITSUNDSBRON**

Bron öppnas dygnet runt för fartyg som kräver större segelfri höjd än 13,5 meter.

Broöppning beställs vardag, minst **tre timmar innan** passage, mellan klockan 0630-1530.

Kontaktinformation: [www.sjofartsverket.se](http://www.sjofartsverket.se)

Bropersonalen passar VHF kanal 13 under öppning.

Note 237

Trafikverket. Publ. 16 juni 2021

**Northern Baltic**

\* 15971 (T)

Chart: 6142

**Sweden. Northern Baltic. Stockholm. E om Lidingö. Höggarn. Underwater survey in the fairway.**

Time: July 1 - July 14

Underwater survey ongoing during the above stated times and in the marked out area in the chartlet.

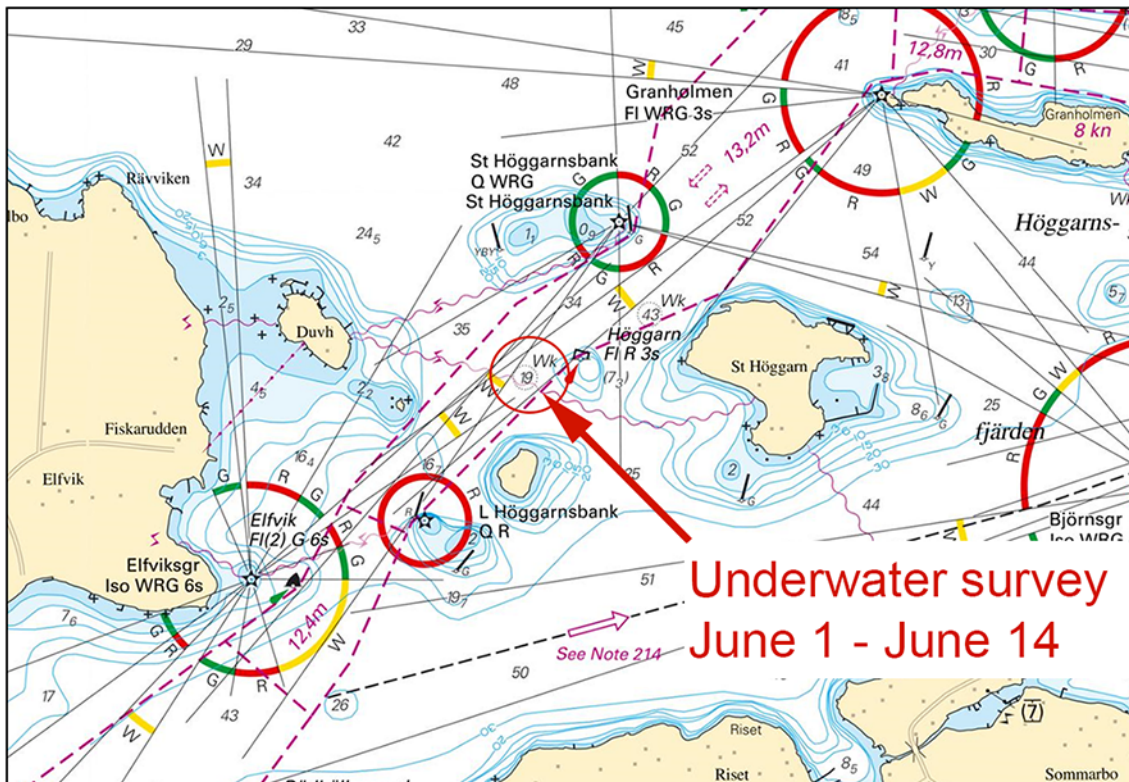
Survey vessel 'Otto/SFC3959' will be anchored in the position below and use a remotely operated underwater vehicle (ROV).

Mariners should keep a wide berth, navigate with caution and pass the area at reduced speed.

Contact: The survey vessel listens to VHF Ch 72, tel +46 707-32 09 33.

Survey area approx pos	59-22,180N	018-16,460E
------------------------	------------	-------------

Bsp Stockholm M 2020/s11, s13, s14, s20, s46



Höggarn. Underwater survey

Ocean Discovery. Publ. 16 juni 2021

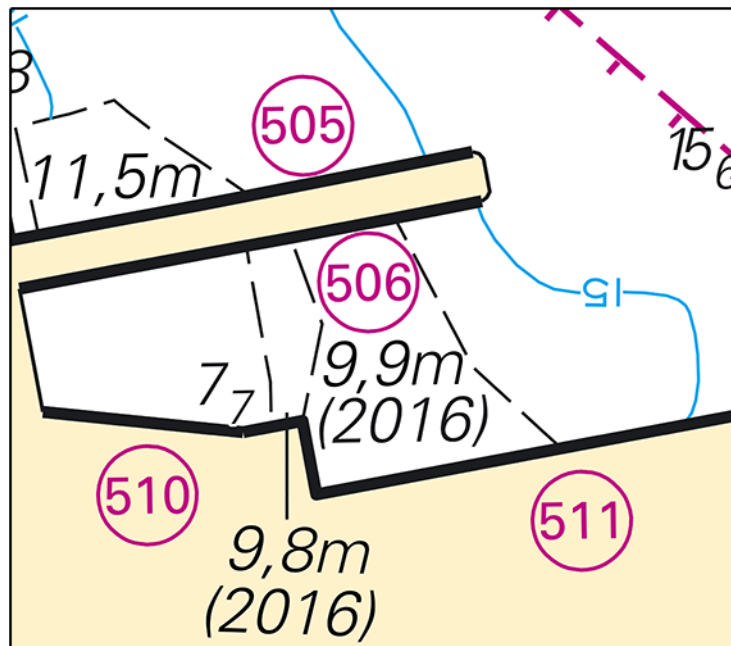
\* 15985

Chart: 6141

**Sweden. Northern Baltic. Stockholm. Värtahamnen. Dredged area.**

Amend	depth of dredged area within a) - g) to 9,9m (2016)	a)	59-21,212N	018-06,790E
		b)	59-21,209N	018-06,744E
		c)	59-21,189N	018-06,757E
		d)	59-21,168N	018-06,748E
		e)	59-21,152N	018-06,754E
		f)	59-21,161N	018-06,860E
		g)	59-21,179N	018-06,823E

Bsp Stockholm M 2020/s09



Värtahamnen

Sjöfartsverket, Norrköping. Publ. 16 juni 2021

## Central Baltic

\* 15970 (T)

Chart: 71, 711

Sweden. Central Baltic. Öland. Light Kapelludden. Temporary unlit.

Expired notices: 2021:857/15859(T)

Time: May 14 -July 14 , 2021

Light 'Kapeludden' will be unlit due to renovation works during the above stated time period.

56-49,171N	016-50,702E
------------	-------------

Not shown in ENC

Bsp Kalmarsund 2019/s05, s07

Sjöfartsverket, Norrköping. Publ. 10 juni 2021

## Southern Baltic

\* 15908

Chart: 7, 74, 742, 743, 8, 83, 839

Sweden. Southern Baltic. South coast. Firing practice area Rinkaby, Ravlunda and Kabusa. Note 105 withdrawn.

Delete note 105 and reference text in affected charts within the below fire practise areas.

Information about upcoming and current firing exercises within the affected fire practise areas are published in temporary notices to mariners.

<b>Delete</b>	note 105			
<b>Delete</b>	text 'See note 105'	55-54N	014-25E	R38A (Rinkaby)
		55-45N	014-24E	R34 (Ravlunda)
		55-22N	013-57E	R55A (Kabusa)

www.forsvarsmakten.se/en/ - Swedish armed forces

Bsp Hanöbukten 2018/s06, s07, s24, s25, s26, s27, s28, s29, s30, s32, s54, s55, Bsp Sydkusten 2012/s06, s27, s28, s29, s55, Bsp Sydkusten 2020/s06, s27, s28, s29, s55

Försvarsmakten. Publ. 16 juni 2021

## Kattegat

\* 15967

Chart: 92, 923, 924

Sweden. Kattegat. Halmstad. Ringenäs. Light.

<b>Amend</b>	light character to	VQ W (occas)	56-41,266N	012-41,127E
--------------	--------------------	--------------	------------	-------------

Adm. LoL. C0735.5

Bsp Västkusten S 2019/s29, s30, Bsp Västkusten S 2021/s29, s30

Försvarsmakten. Publ. 16 juni 2021

\* 15974 (T)

Chart: 92, 923, 924

Sweden. Kattegat. W of Halmstad. Ringenäs. Firing exercise. June 23.

Firing will take place at R41A Ringenäs firing range during stated times. The dangerous area extends from the shore according to the table below. A light on shore, VQ W, will be shown during firing.

For further information call +46 35 266 39 55, +46 35 536 77.

Date	Hours	Range
June 23	0900 - 1600 LT	2.4 M

Position: Approx.	56-40,8N	012-38,6E	Firing restriction area R41 A RINGENÄS
-------------------	----------	-----------	--

Not shown in ENC.

Bsp Västkusten S 2019/s28, s29, s30, Bsp Västkusten S 2021/s28, s29, s30

Försvarsmakten. Publ. 16 juni 2021

## Lake Vänern and Trollhätte Canal

\* 15973

Chart: 1353

Sweden. Lake Vänern and Trollhätte Canal. Göta älv. S of Lilla Edet. Fairway marker 430. Position.

<b>Move</b>	fairway marker 430 'Röda sten' approximately 30 m SSW to position	58-05,969N	012-08,952E
-------------	---	------------	-------------

Bsp Göta kanal 2011/s49, Trollhätte kanal - Dalslands kanal 2020/s16



Fairway marker 430 in Göta älv. New position