

Notices to Mariners, SWEDEN Swedish Maritime Administration



Areas in Swedish Notices to Mariners



SJÖFARTSVERKET

Editorial office
Swedish Maritime Administration
Ufs
601 78 NORRKÖPING
Sweden
tel: 0771 630 605
e-mail: ufs@sjofartsverket.se
Publisher:
Hydrographer Patrik Wiberg

Affected charts and Notices

Underrättelser för sjöfarande (Ufs) is an official Swedish publication which provides information pertaining to shipping in the Baltic Sea Area and Kattegat, as well as Skagerrak east of a line drawn between Hanstholm and Lindesnes.

The information on foreign waters is largely confined to significant occurrences which may affect Swedish charts. Ufs is thus wholly unsuited for the purpose of keeping BA-charts and/or other national charts updated.

An asterisk (*) in front of the number denotes that the notice is based on information obtained from Swedish source material and that the details contained therein affect Swedish waters.

When the letter (P) is adjacent to the notice number it serves as an indication that the notice is of a preliminary nature. Such notices will later be replaced by corresponding ones containing definitive information.

Similarly, when the letter (T) is placed adjacent to the notice number it denotes that the notice is of a temporary nature. In case no period of validity is given, this type of notice will be rendered invalid either when a new Temporary Notice is promulgated or if pertaining conditions cease to exist.

Bearings are true and given clockwise from 000° to 360° and, when given in conjunction with lights, indicate a direction from seaward.

Featured chartlets are primarily intended to simplify chart correction work and are not always true to scale. In general, they show the largest charted scale available for respective area.

Responsibility for the factual content published in Ufs rests with the informant.

Chart corrections and other information attributed to a specific geographical area can be found under NOTICES. Other information is found under ANNOUNCEMENTS, starting on pg. 3.

The periodical Ufs is normally published every Thursday and can be downloaded as a PDF-file from the homepage of the Swedish Maritime Administration. Note that as the file is automatically generated from a database unintentional page breaks may occur at random.

Further information on the use of Ufs can be found in the annual publication *Ufs A*.

Reporting dangers and errors

All observations concerning floating aids to navigation, unlit beacons and lights, objects adrift or any other occurrence which may have a detrimental impact on safety at sea are to be forwarded to Sweden Traffic at the earliest possible opportunity.

Call: Sweden Traffic

VHF Channel: Appropriate working channel

Phone: +46 771 630 685 (24/7)

E-mail: swedentraffic@sjofartsverket.se

| Affected charts | Notice no | Si gn | Affected charts | Notice no | Si gn |
|-----------------|-----------|-------|-----------------|-----------|-------|
| 5 | 15846 | | 6162 | 15759 (T) | |
| 8 | 15845 (T) | | 6162 | 15872 (T) | |
| 10 | 15759 (T) | | 6163 | 15759 (T) | |
| 10 | 15872 (T) | | 6163 | 15872 (T) | |
| 52 | 15846 | | 7411 | 15816 | |
| 53 | 15846 | | 7413 | 15816 | |
| 61 | 15759 (T) | | 9321 | 15796 | |
| 61 | 15860 (T) | | 9331 | 15864 (T) | |
| 61 | 15872 (T) | | | | |
| 62 | 15759 (T) | | | | |
| 62 | 15872 (T) | | | | |
| 71 | 15859 (T) | | | | |
| 71 | 15871 | | | | |
| 111 | 15627 | | | | |
| 525 | 15846 | | | | |
| 536 | 15860 (T) | | | | |
| 611 | 15860 (T) | | | | |
| 612 | 15600 | | | | |
| 615 | 15600 | | | | |
| 616 | 15759 (T) | | | | |
| 616 | 15872 (T) | | | | |
| 619 | 15600 | | | | |
| 619 | 15860 (T) | | | | |
| 624 | 15689 | | | | |
| 711 | 15689 | | | | |
| 711 | 15859 (T) | | | | |
| 731 | 15862 | | | | |
| 742 | 15845 (T) | | | | |
| 743 | 15845 (T) | | | | |
| 839 | 15843 (T) | | | | |
| 921 | 15739 | | | | |
| 922 | 15861 (T) | | | | |
| 931 | 15796 | | | | |
| 932 | 15864 (T) | | | | |
| 933 | 15864 (T) | | | | |
| 933 | 15865 (T) | | | | |
| 4211 | 15829 | | | | |
| 6143 | 15600 | | | | |

ANNOUNCEMENTS*** 15861 (T)****Chart: 922****Landskrona. Maximum permissible draft.**

See: 2021:851/15754(T)

Time: Until further notice

Maximum draft for vessels calling Port of Landskrona is lowered to 8,1 m.

For more information on recommendations and restrictions visit: www.sjofartsverket.se/en

| | | |
|------------|-----------|------------|
| Landskrona | 55-52,04N | 012-48,94E |
|------------|-----------|------------|

Bsp Sydkusten 2012/s13, s50, Bsp Sydkusten 2020/s13, s50

*Sjöfartsverket. Publ. 5 maj 2021***NOTICES****Bay of Bothnia***** 15829****Chart: 4211****Sweden. Bay of Bothnia. Port of Skellefteå. Areas being reclaimed.**

| | | | | |
|---------------|--|----|------------|-------------|
| Insert | area "Being reclaimed (2021)" within a) - e) | a) | 64-40,889N | 021-15,898E |
| | | b) | 64-40,859N | 021-15,887E |
| | | c) | 64-40,801N | 021-16,112E |
| | | d) | 64-40,762N | 021-16,260E |
| | | e) | 64-40,803N | 021-16,420E |

| | | | | |
|---------------|--|----|------------|-------------|
| Insert | area "Being reclaimed (2021)" within f) - g) | f) | 64-40,666N | 021-16,909E |
| | | g) | 64-40,588N | 021-17,222E |

Bsp Bottenviken 2018/s64, s65

*Skellefteå kommun. Publ. 5 maj 2021***Sea of Bothnia***** 15846****Chart: 5, 52, 525, 53****Sweden. Sea of Bothnia. NE of Härnösand. Beacon 'Remmarharet båk' removed.**

| | | | |
|---------------|--------|------------|-------------|
| Delete | beacon | 61-50,723N | 017-26,543E |
|---------------|--------|------------|-------------|

Bsp Bottenhavet S 2019/s14

*Sjöfartsverket. Publ. 5 maj 2021***Sea of Åland and Archipelago Sea***** 15860 (T)****Chart: 536, 61, 611, 619****Sweden. Sea of Åland and Archipelago Sea. E of Vaddö. Firing exercise. May 5 - 6, 2021.**

| | | | |
|-------------------|--------|---------|----------------------------|
| Position: Approx. | 60-00N | 018-57E | Vaddö Firing practice area |
|-------------------|--------|---------|----------------------------|

Firing exercises will take place at R 15A Vaddö firing range during stated times. The dangerous area extends from the shore according to the table below.

Further information: Tel +46 10 823 65 82 or VHF channel 16, call Vaddö Skjutfält.

| Date | Hours | Range |
|-----------|----------------|-------|
| May 5 - 6 | 0800 - 1600 LT | 3.0 M |

Not shown in ENC.

Bsp Stockholm N 2020/s04, s05, s06, s08, s20, s21, s22, s24, s61

Försvarsmakten. Publ. 29 april 2021

Northern Baltic

* 15600

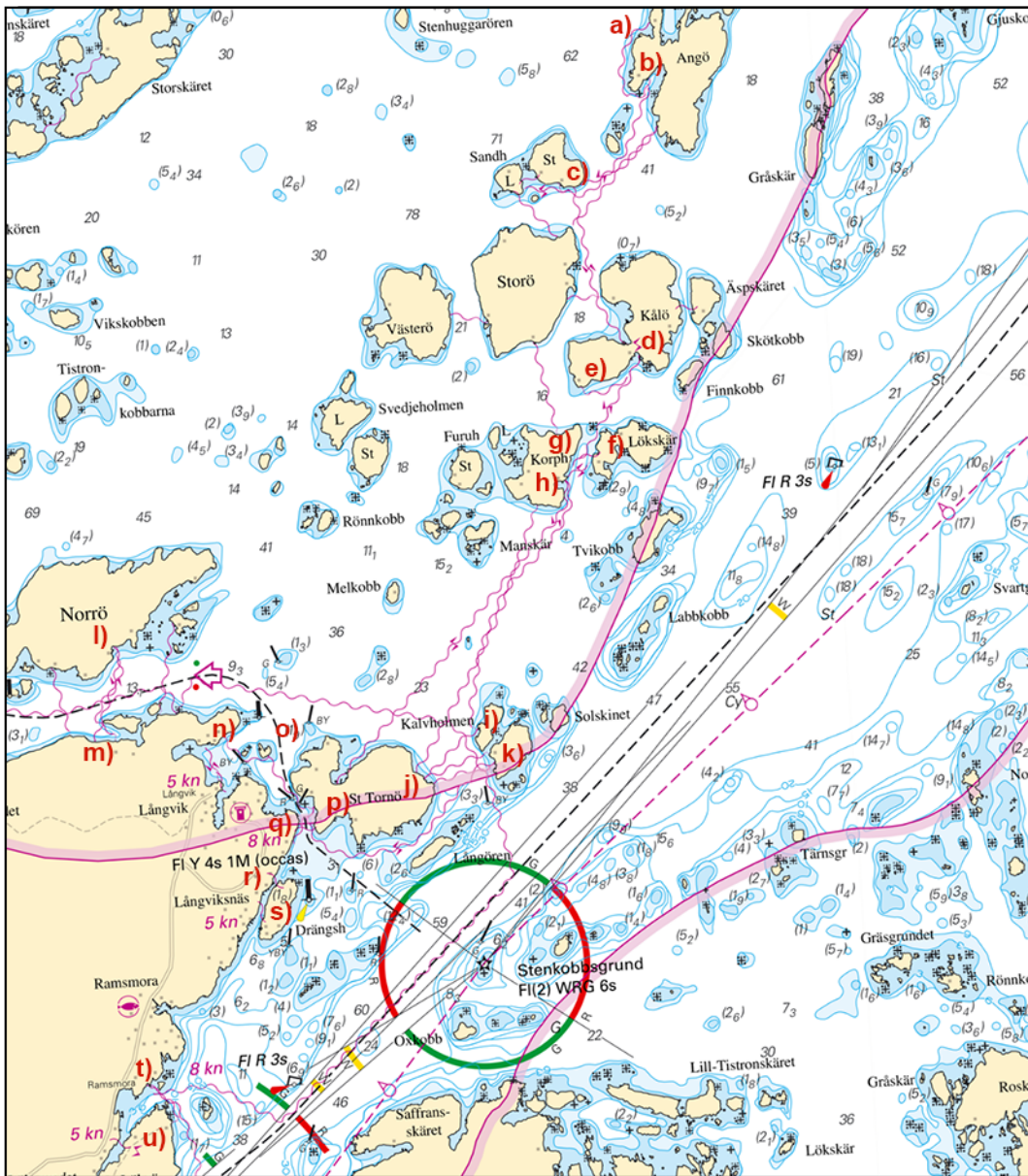
Chart: 612, 6143, 615, 619

Sweden. Northern Baltic. Stockholm archipelago. Möja. Submarine cable.

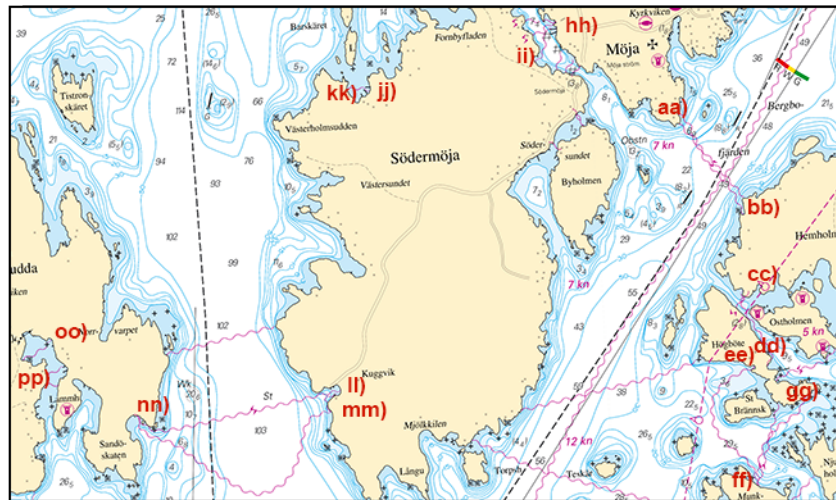
| | | | | |
|---------------|---------------------------------|----|------------|-------------|
| Insert | submarine cable between a) - c) | a) | 59-29,379N | 018-58,810E |
| | | b) | 59-29,170N | 018-58,775E |
| | | c) | 59-28,787N | 018-58,048E |
| Insert | submarine cable between d) - e) | d) | 59-28,118N | 018-58,572E |
| | | e) | 59-28,000N | 018-58,122E |
| Insert | submarine cable between f) - g) | f) | 59-27,735N | 018-58,181E |
| | | g) | 59-27,700N | 018-58,000E |
| Insert | submarine cable between h) - k) | h) | 59-27,646N | 018-57,957E |
| | | i) | 59-26,722N | 018-57,200E |
| | | j) | 59-26,544N | 018-56,78E |
| | | k) | 59-26,622N | 018-57,272E |
| Insert | submarine cable between l) - m) | l) | 59-27,114N | 018-54,511E |
| | | m) | 59-26,752N | 018-54,474E |
| Insert | submarine cable between n) - q) | n) | 59-26,747N | 018-55,284E |
| | | o) | 59-26,664N | 018-55,608E |
| | | p) | 59-26,457N | 018-55,930E |
| | | q) | 59-26,320N | 018-55,745E |
| Insert | submarine cable between r) - s) | r) | 59-26,195N | 018-55,600E |
| | | s) | 59-26,170N | 018-55,620E |
| Insert | submarine cable between t) - u) | t) | 59-25,430N | 018-54,575E |
| | | u) | 59-25,270N | 018-54,720E |

| | | | | |
|---------------|-----------------------------------|-----|------------|-------------|
| Insert | submarine cable between aa) - bb) | aa) | 59-24,100N | 018-53,000E |
| | | bb) | 59-23,800N | 018-53,335E |
| Insert | submarine cable between cc) - dd) | cc) | 59-23,550N | 018-53,320E |
| | | dd) | 59-23,340N | 018-53,440E |
| Insert | submarine cable between ee) - ff) | ee) | 59-23,330N | 018-53,360E |
| | | ff) | 59-22,985N | 018-53,340E |
| Insert | submarine cable between gg) - ff) | gg) | 59-23,240N | 018-53,640E |
| Insert | submarine cable between hh) - ii) | hh) | 59-24,395N | 018-52,320E |
| | | ii) | 59-24,280N | 018-52,195E |
| Insert | submarine cable between jj) - kk) | jj) | 59-24,220N | 018-51,215E |
| | | kk) | 59-24,230N | 018-51,080E |
| Insert | submarine cable between ll) - mm) | ll) | 59-23,325N | 018-50,915E |
| | | mm) | 59-23,280N | 018-50,880E |
| Insert | submarine cable between nn) - mm) | nn) | 59-23,300N | 018-49,755E |
| Insert | submarine cable between oo) - pp) | oo) | 59-23,540N | 018-49,280E |
| | | pp) | 59-23,480N | 018-49,100E |

Bsp Stockholm M 2020/s18, s19, s55, Bsp Stockholm N 2020/s29, s31, s34, s40, s44, s45, s62



Möja submarine cable



Södermöja submarine cables

* 15759 (T)

Chart: 10, 61, 616, 6162, 6163, 62

Sweden. Northern Baltic. E of Utö. Firing exercises. May 17 - 23.

| | | | |
|-------------------|--------|---------|--------------------------|
| Position: Approx. | 58-54N | 018-20E | Utö Firing practice area |
|-------------------|--------|---------|--------------------------|

Firing exercises will be carried out within Utö firing range during stated times. The current extension of the closed area is given in the table.

Signal ammunition is used during hours of darkness.

Information during practice times VHF channel 16, call Utö skjutfält, or phone +46 8 501 570 45. Information about upcoming practice times, phone: +46 10 823 18 23, Muskö Sjöcentral.

| Date | Time | Range from shore |
|-------------|----------------|------------------|
| May 17 | 0900 - 1800 LT | 1.8 M |
| May 18 - 20 | 0900 - 1900 LT | 3.8 M |
| May 21 - 23 | 0900 - 1700 LT | 3.8 M |

Not shown in ENC.

BSP Stockholm S 2020/s04, s05, s13, s17, s18, s19, s35, s37

Försvarmakten. Publ. 5 maj 2021

* 15872 (T)

Chart: 10, 61, 616, 6162, 6163, 62

Sweden. Northern Baltic. E of Utö. Firing exercises. May 6 - 9.

Expired notices: 2021:856/15856(T)

| | | | |
|-------------------|--------|---------|--------------------------|
| Position: Approx. | 58-54N | 018-20E | Utö Firing practice area |
|-------------------|--------|---------|--------------------------|

Firing exercises will be carried out within Utö firing range during stated times. The current extension of the closed area is given in the table.

Signal ammunition is used during hours of darkness.

Information during practice times VHF channel 16, call Utö skjutfält, or phone +46 8 501 570 45. Information about upcoming practice times, phone: +46 10 823 18 23, Muskö Sjöcentral.

| Date | Time | Range from shore |
|-----------|----------------|------------------|
| May 6 - 7 | 1300 - 2300 LT | 3.8 M |
| May 8 | 1300 - 1500 LT | 4.3 M |
| May 9 | 1400 - 2300 LT | 3.8 M |

Not shown in ENC.

BSP Stockholm S 2020/s04, s05, s13, s17, s18, s19, s35, s37

Försvarmakten. Publ. 5 maj 2021

Lake Mälaren and Södertälje Canal

* 15627

Chart: 111

Sweden. Lake Mälaren and Södertälje Canal. Mälaren. Norra Björkfjärden. Svalgarn. Buoyage.

| | | | |
|--------|--|------------|-------------|
| Insert | starboard hand spar buoy with top mark | 59-30,331N | 017-30,019E |
|--------|--|------------|-------------|

Bsp Mälaren - Hjälmaran 2020/s25

Sjöfartsverket. Publ. 5 maj 2021

Central Baltic

* 15689

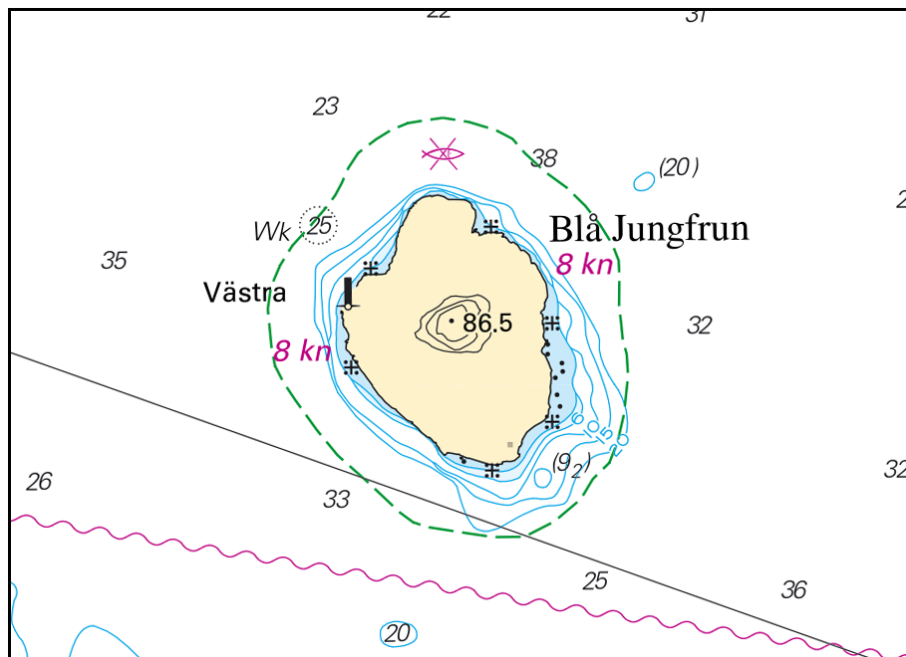
Chart: 624, 711

Sweden. Central Baltic. Kalmarsund. Island 'Blå Jungfrun'. Nature reserve. Fishing prohibited. Speed limit.

| | | | |
|--------|--|-----------|------------|
| | Blå Jungfrun | 57-15,16N | 016-47,58E |
| Insert | boundary of nature reserve as shown | | |
| Insert | speed limit 8 knots inside boundary line of nature reserve | | |
| Insert | fishing prohibited inside boundary line of nature reserve | | |

Swedish EPA - Statute NFS 2014:8 (available in Swedish language)

Bsp Kalmarsund 2019/s18



Blå Jungfrun

Länsstyrelsen i Kalmar län. Publ. 4 maj 2021

*** 15859 (T)**

Chart: 71, 711

Sweden. Central Baltic. Öland. Light Kapelludden. Temporary unlit.

Time: May 14 -June 23 , 2021

Light 'Kapelludden' will be unlit due to renovation works during the above stated time period.

| | |
|------------|-------------|
| 56-49,171N | 016-50,702E |
|------------|-------------|

Not shown in ENC

Bsp Kalmarsund 2019/s05, s07

Sjöfartsverket, Norrköping. Publ. 5 maj 2021

*** 15862**

Chart: 731

Sweden. Central Baltic. Gotland. Kappelshamnsviken. Amended depths.

A hydrographic survey in Kappelshamnsviken has shown other depths than charted.

Important amendments are presented in the table below, and will be published in the next print of the affected chart.

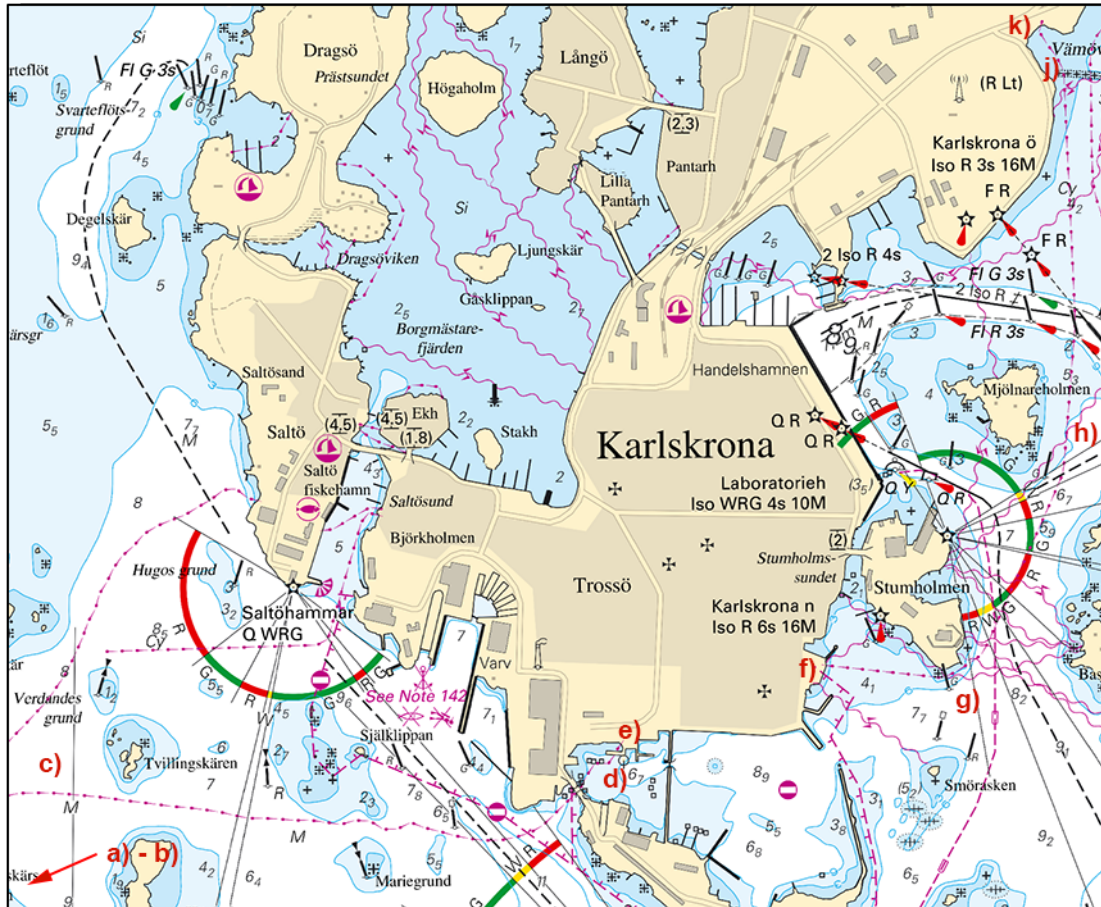
The changes are available as an ENC update.

| | | | | | |
|---------------|----------------|---|----|------------|-------------|
| Insert | sounding 6,8 m | | a) | 57-50,961N | 018-47,487E |
| Insert | sounding 5,5 m | and adjust 6-m depth contour nearby according to chartlet | b) | 57-50,750N | 018-47,401E |

| | | | | | |
|---------------|------------------------------------|----|------------|-------------|----------------------|
| Insert | submarine pipeline between a) - e) | a) | 56-07,174N | 015-28,158E | Landing point Hasslö |
| | | b) | 56-07,589N | 015-29,664E | |
| | | c) | 56-09,239N | 015-33,096E | |
| | | d) | 56-09,283N | 015-34,922E | |
| | | e) | 56-09,317N | 015-35,000E | Landing point Trossö |
| Insert | submarine pipeline between f) - k) | f) | 56-09,453N | 015-35,659E | Landing point Trossö |
| | | g) | 56-09,431N | 015-36,014E | |
| | | h) | 56-09,790N | 015-36,410E | |
| | | i) | 56-10,083N | 015-36,452E | |
| | | j) | 56-10,503N | 015-36,425E | |
| | | k) | 56-10,583N | 015-36,352E | Landpoint Vämövisken |

| | | | | |
|---------------|--|-----|------------|-------------|
| Insert | submarine pipeline between aa) - bb) | aa) | 56-10,375N | 015-33,785E |
| | | bb) | 56-10,442N | 015-33,971E |
| Insert | submarine pipeline between cc) - dd) | cc) | 56-10,350N | 015-34,115E |
| | | dd) | 56-10,106N | 015-34,153E |
| Delete | previously shown supply pipeline between ee) - ff) | ee) | 56-10,397N | 015-33,736E |
| | | ff) | 56-10,410N | 015-33,989E |
| Delete | previously shown supply pipeline between gg) - hh) | gg) | 56-10,382N | 015-34,152E |
| | | hh) | 56-10,123N | 015-34,171E |
| Insert | submarine pipeline between ii) - jj) | ii) | 56-09,942N | 015-34,326E |
| | | jj) | 56-09,936N | 015-34,440E |
| Insert | submarine pipeline between kk) - ll) | kk) | 56-09,884N | 015-34,184E |
| | | ll) | 56-09,879N | 015-34,247E |
| Insert | submarine pipeline between kk) and mm) | mm) | 56-09,836N | 015-34,326E |
| Insert | submarine pipeline between nn) - oo) | nn) | 56-09,700N | 015-34,060E |
| | | oo) | 56-09,738N | 015-34,248E |
| Insert | submarine pipeline between pp) - qq) | pp) | 56-10,171N | 015-35,102E |
| | | qq) | 56-10,233N | 015-35,203E |
| Insert | submarine pipeline between rr) - ss) | rr) | 56-10,474N | 015-35,129E |
| | | ss) | 56-10,450N | 015-35,182E |

Bsp Hanöbukten 2018/s16, s19, s40, s41, s42, s43



Sturkö - Vämövik

| Date | Hours | Range |
|-------------|----------------|-------|
| May 18 - 20 | 0900 - 1700 LT | 2.7 M |
| May 25 - 29 | 0900 - 2000 LT | 2.5 M |

Not shown in ENC.

Bsp Hanöbukten 2018/s06, s07, s24, s25, s26, s27, s28, s29, s30, s31, s32, s33, Bsp Sydkusten 2012/s06, s07, s29, Bsp Sydkusten 2020/s06, s07, s29

Försvarsmakten, Södra Skånska Regementet, Södra Sandby. Publ. 5 maj 2021

The Sound

* 15739

Chart: 921

Sweden. The Sound. Skanör. Light Skanör. Sectors.

Expired notices: 2018:712/12972(P)

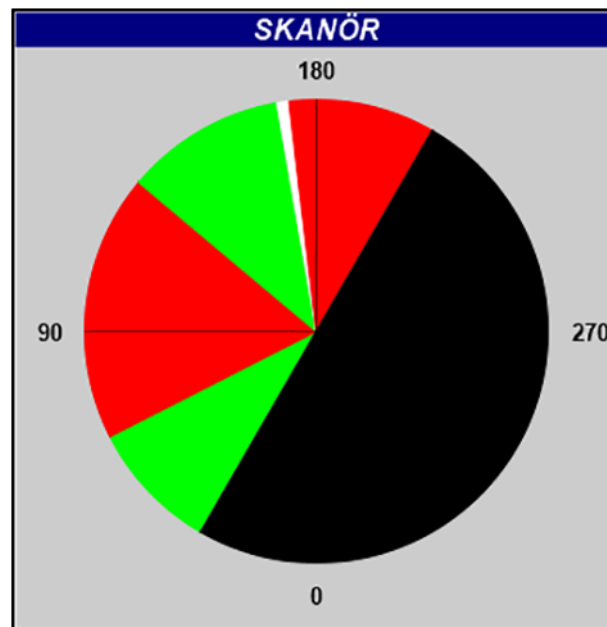
| | | |
|----------------|------------|-------------|
| Light 'Skanör' | 55-25,017N | 012-49,684E |
|----------------|------------|-------------|

Light sectors on light 'Skanör LFI (2)' has been changed as to the below:

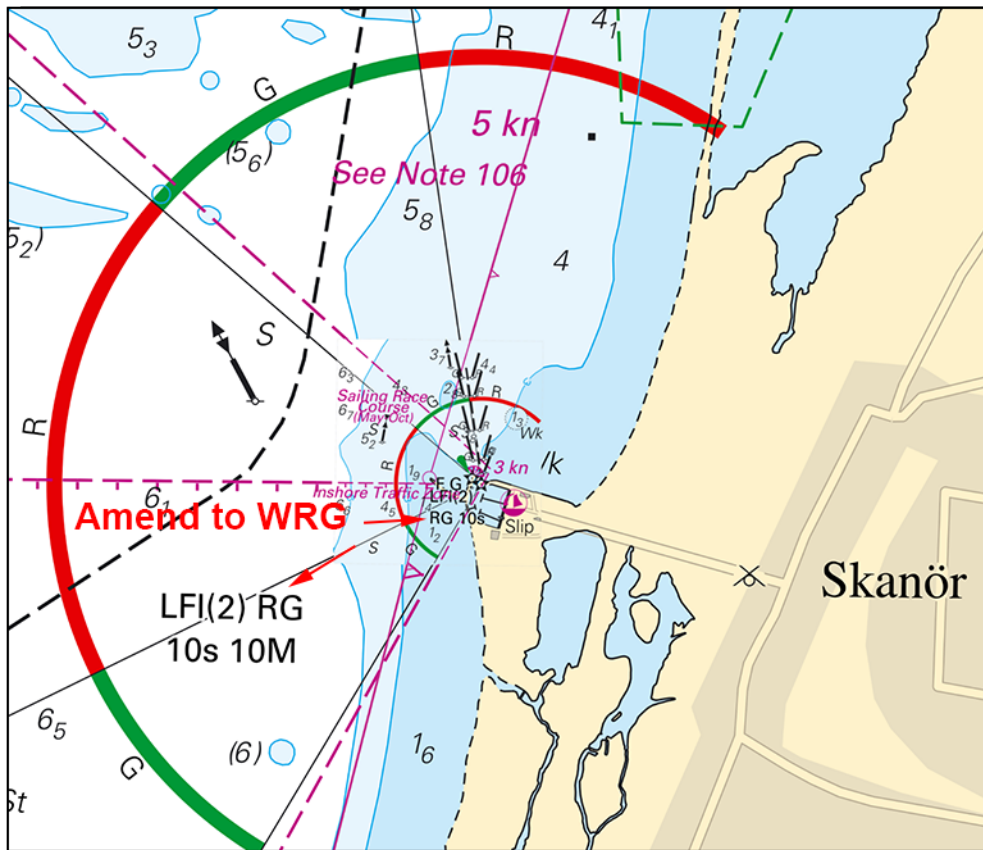
| | Bearing (from sea towards the light) | Colour |
|--------------|--------------------------------------|--------|
| | 030.0 - 063.0 | G |
| | 063.0 - 130.0 | R |
| | 130.0 - 170.2 | G |
| | 170.2 - 173.2 | W |
| | 173.2 - 210.0 | R |
| | 210.0 - 030.0 | DK |
| Amend | light character to WRG in chart | |

Adm. LoL C2414

Bsp Sydkusten 2012/s03, s05, s06, s20, s21, s23, s24, s51, Bsp Sydkusten 2020/s03, s05, s06, s20, s21, s23, s24, s51



Sectors



Skanör

Sjöfartsverket. Publ. 5 maj 2021

Kattegat

* 15796

Chart: 931, 9321

Sweden. Kattegat. Ryskärsfjorden. Vedhall. Submarine cable, power. Overhead power cable removed.

| | | | | |
|---------------|--|----|------------|-------------|
| Insert | Submarine power cable between a) - b) | a) | 57-49,564N | 011-42,246E |
| | | b) | 57-49,492N | 011-41,477E |
| Delete | overhead power cable and vertical clearance 10 m between c) - d) | c) | 57-49,695N | 011-42,039E |
| | | d) | 57-49,555N | 011-41,993E |
| Delete | overhead power cable and vertical clearance 6 m between e) - f) | e) | 57-49,762N | 011-42,189E |
| | | f) | 57-49,696N | 011-42,249E |

Bsp Västkusten S 2019/s17, s43, Bsp Västkusten S 2021/s17, s43



Vedhall

Kungälv Energi. Publ. 5 maj 2021

Skagerrak

* 15864 (T)

Chart: 932, 933, 9331

Sweden. Skagerrak. SW of Lysekil. Bonden. Blast warning. May 10 - 12.

Time: May 10, 0900 - 1900, and Maj 11, 0900 - Maj 12, 1900 LT.

The Swedish Armed Forces will conduct underwater detonations in an area west of island Bonden off Lysekil.

Safe distance for vessels are 500 m, swimming 1322 m, diving 3000 m.

Contact with participating vessels can be made on VHF Ch 16 or telephone: +46 31 692 805.

| | | | |
|-------------------|----|-----------|------------|
| blast area Bonden | a) | 58-10,24N | 011-13,30E |
| | b) | 58-13,30N | 011-13,30E |
| | c) | 58-13,30N | 011-17,48E |
| | d) | 58-10,24N | 011-17,48E |

Not shown in ENC.

Bsp Västkusten N 2019/s18, s19, s22, s31, Bsp Västkusten N 2021/s18, s19, s22, s31, Bsp Västkusten S 2019/s10, Bsp Västkusten S 2021/s10

Försvarmakten. Publ. 5 maj 2021

* 15865 (T)

Chart: 933

Sweden. Skagerrak. NE of Lysekil. Gullmarn. Lilla Bornö. Blast warning. May 10 - 12.

Blastings in progress during the stated times. Safety distance 500 m for vessels, 600 m for divers and 390 m for swimmers.

Contact: Telephone +46 31-692 805.

| Date | Time |
|-------------|--------------------------|
| May 10 | 0900 - 1900 LT |
| May 11 - 12 | 0900 11/5 - 1900 12/5 LT |

| | | | |
|-------------------------------|----|-----------|------------|
| Blasting area between a) - d) | a) | 58-23,48N | 011-36,48E |
| | b) | 58-23,48N | 011-37,06E |
| | c) | 58-23,40N | 011-37,06E |
| | d) | 58-23,40N | 011-36,48E |

Not shown in ENC.

Bsp Västkusten N 2019/s17, Bsp Västkusten N 2021/s17

Försvarmakten. Publ. 5 maj 2021