

Notices to Mariners, SWEDEN Swedish Maritime Administration



Areas in Swedish Notices to Mariners



SJÖFARTSVERKET

Editorial office
Swedish Maritime Administration
Ufs
601 78 NORRKÖPING
Sweden
tel: 0771 630 605
e-mail: ufs@sjofartsverket.se
Publisher:
Hydrographer Patrik Wiberg

ANNOUNCEMENTS

* 15588

Information from SMHI. Weather warning system.

From April 2021, the Swedish Meteorological and Hydrological Institute changes the weather warning system. The warning labels are yellow warning, orange warning and red warning.

With the new warnings, it will be easier to understand what problems the weather can cause. The choice of warning level will be based on the consequences that are expected to arise in a certain area. The same weather can have different consequences in different places. Therefore, for example, the same amount of snowfall will get a higher warning level in metropolitan areas than in the mountains.

The weather warnings are adapted to local conditions. This contributes to reduced vulnerability and increased safety. For more information: www.smhi.se

www.smhi.se

SMHI. Publ. 3 februari 2021

* 15675

Chart: 711, 712, 713

Kalmar. Öland. Kalmarsund. Advice cancelled for vessels with low engine power not to pass.

Expired notices: 2021:846/15646(T)

The recommendation for vessels with low engine power not to pass through Kalmarsund, is now cancelled due to improved ice conditions.

Kalmarsund northern entrance	a)	57-12N	016-44E
Kalmarsund southern entrance	b)	56-15N	016-13E

Bsp Hanöbukten 2018/s08, s09, s10, s12, Bsp Kalmarsund 2019

Sjöfartsverket. Publ. 3 mars 2021

NOTICES

Sea of Bothnia

* 15676 (T)

Chart: 523

Sweden. Sea of Bothnia. N of Härmösand. Ångermanälven. Sannasundet. Hemsön. Cable ferry operational during daytime.

Expired notices: 2021:845/15614(T)

Time: Until further notice

The cable ferry that was temporarily replaced by an ordinary ferry due to ice conditions is now back in operation during daytime. At night the ordinary ferry is in service.

Ferry route	62-41,4N	017-59,5E
-------------	----------	-----------

Not shown in ENC.

Bsp Bottenhavet N 2019/s12

Trafikverket, Färjerederiet. Publ. 3 mars 2021

Northern Baltic

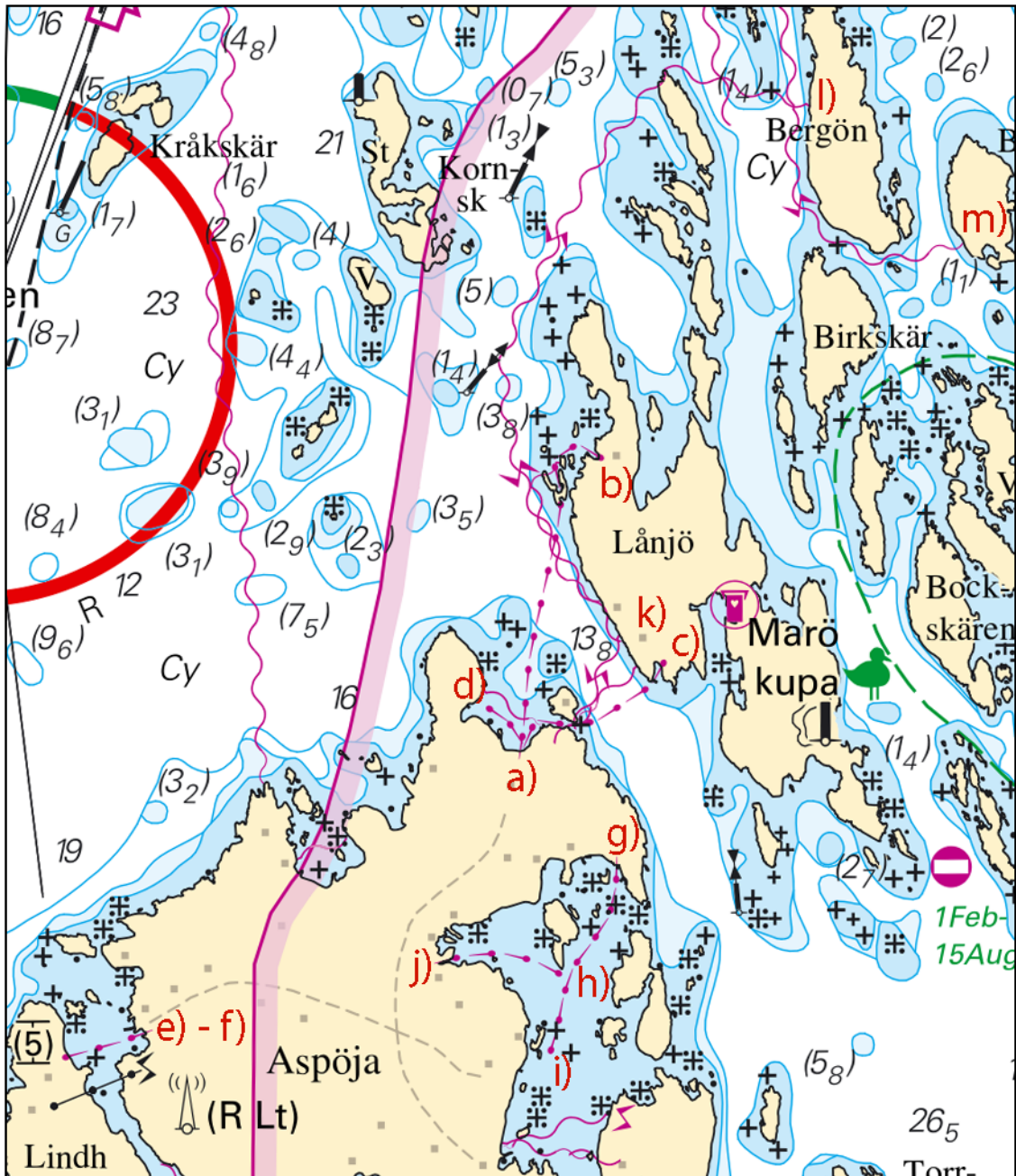
* 15428

Chart: 621, 622

Sweden. Northern Baltic. Aspöja - Lånjö. Supply pipelines. Submarine power cables.

Insert	supply pipeline between a) and c)	a)	58-25,94N	016-58,37E
		b)	58-26,42N	016-58,62E
Insert	supply pipeline between a) and c)	c)	58-26,07N	016-58,80E
Insert	supply pipeline between a) and d)	d)	58-26,02N	016-58,23E
Insert	supply pipeline between e) and f)	e)	58-25,48N	016-57,18E
		f)	58-25,44N	016-56,95E
Insert	supply pipeline between g) - i)	g)	58-25,75N	016-58,66E
		h)	58-25,56N	016-58,51E
		i)	58-25,45N	016-58,45E
Insert	supply pipeline between j) and h)	j)	58-25,59N	016-58,12E
Insert	submarine power cable between k) and l)	k)	58-26,12N	016-58,68E
Insert	submarine power cable between l) and m)	l)	58-26,99N	016-59,27E
		m)	58-26,77N	016-59,75E

Bsp Ostkusten 2019/s37



Aspöja. Supply pipelines and submarine power cables

Aspöja vattenverk. Publ. 3 mars 2021

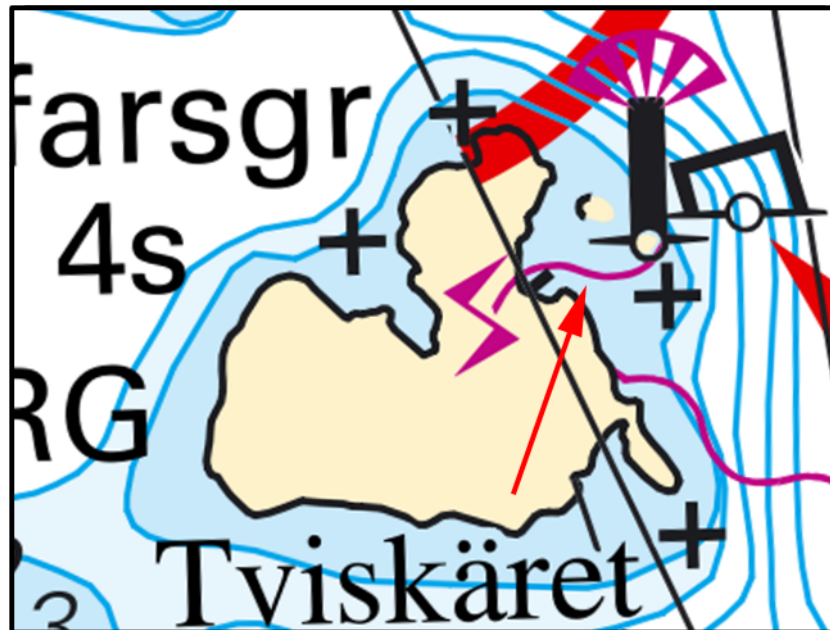
* 15619

Chart: 6143, 6144

Sweden. Northern Baltic. Stockholms skärgård. Sandhamn. Tviskäret. Submarine power cable.

Insert	submarine power cable	59-17,575N	018-53,450E	See chartlet.
--------	-----------------------	------------	-------------	---------------

Bsp Stockholm M 2020/s25, s31



Sjökabel

Sjöfartsverket. Publ. 3 mars 2021

* 15668 (T)

Chart: 616, 6162, 6171

Sweden. Northern Baltic. Port of Nynäshamn. Works.

Expired notices: 2021:843/15597(T)

Time: Until March 31

Work is in progress on erosion protection in the port of Nynäshamn. The work does not affect existing ferry traffic.

The work consists of placing boulders from land. No diving operations.

Contact with contractor: 0721-597202

Work area	58-54,47N	017-57,52E
-----------	-----------	------------

Not shown in ENC.

BSP Stockholm S 2020/s21, s26, s35

Stockholms hamnar. Publ. 1 mars 2021

15683

Chart: 5, 6, 61, 619

Finland. Northern Baltic. Utö. TSS South Åland Sea. Submarine cable.

Insert	submarine cable a) - m)	a)	59-46,86N	021-21,95E
		b)	59-47,05N	021-21,49E
		c)	59-46,66N	021-18,65E
		d)	59-44,33N	021-14,41E
		e)	59-43,36N	021-10,56E
		f)	59-45,02N	021-02,26E
		g)	59-44,20N	021-00,00E
		h)	59-43,91N	020-51,98E
		i)	59-43,19N	020-47,00E
		j)	59-44,51N	020-38,98E
		k)	59-44,35N	020-30,00E
		l)	59-45,40N	020-25,22E
		m)	59-45,31N	020-20,27E

Finnish NtM 2021: 5/50 Publ. 3 mars 2021

Southern Baltic*** 15629****Chart: 839****Sweden. Southern Baltic. Bornholmsgattet. TSS. Traffic direction arrow.**

Delete	traffic direction arrow	55-19,90N	014-26,00E
--------	-------------------------	-----------	------------

Not shown in ENC.

Bsp Sydkusten 2012/s30

*Sjöfartsverket. Publ. 3 mars 2021**** 15667 (T)****Chart: 742****Sweden. Southern Baltic. Hällevik. Hälleviksbukten. Works.**

See: 2020:814/15076(T)

Time: March 3 - 21.

Work will be carried out to transport pipelines stored at the seabed in an area east of Hällevik marina. The pipelines are transported to the marina and taken ashore.

Work boats, rafts and divers perform work in Hälleviksbukten during the specified time.

56-00,5N	014-42,4E	Area with pipelines
----------	-----------	---------------------

Not shown in ENC

Bsp Hanöbukten 2018/s22, s50

*NCC. Publ. 26 februari 2021***15673****Chart: 7, 74, 8, 83****Germany. Southern Baltic. W of Adlergrund. Submarine power cables.**

Insert	submarine power cable between a) - e)	a)	54-45,54N	013-56,14E
		b)	54-45,64N	013-55,95E
		c)	54-48,64N	013-42,99E
		d)	54-49,22N	013-41,65E
		e)	54-49,04N	013-40,63E
Insert	submarine power cable between f) - j)	f)	54-45,54N	013-56,14E
		g)	54-46,00N	013-56,12E
		h)	54-46,26N	013-56,21E
		i)	54-49,13N	013-55,26E
		j)	54-49,26N	013-53,95E

*German NtM 2021:06. Publ. 3 mars 2021***Kattegat***** 15678 (T)****Chart: 92, 923, 924****Sweden. Kattegat. W of Halmstad. Ringenäs. Firing exercise. March 10 - 12.**

Position: Approx.	56-40,8N	012-38,6E	Firing restriction area R41 A RINGENÄS
-------------------	----------	-----------	--

Firing will take place at R41A Ringenäs firing range during stated times. The dangerous area extends from the shore according to the table below. A light on shore, VQ R, will be shown during firing.

For further information call +46 35 266 39 55, +46 35 536 77.

Date	Hours	Range
March 10	0930 - 1500 LT	3.8 M
March 11 - 12	0900 - 1600 LT	2.4 M

Not shown in ENC.

Bsp Västkusten S 2019/s28, s29, s30

Skagerrak

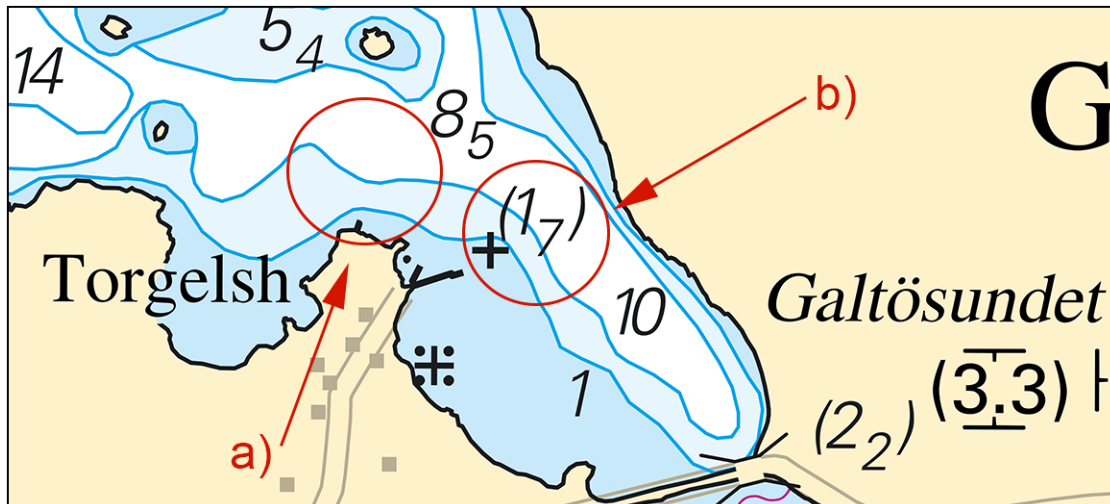
* 15671

Chart: 934

Sweden. Skagerrak. Galtö. Resö. Galtösundet. Depths.

Delete	depth 2 m and adjust depth contour as shown	a)	58-49,21N	011-11,64E
Insert	depth 1,7 m adjacent to underwater rock	b)	58-49,14N	011-11,83E

Bsp Västskusten N 2019/s09



Galtösundet

Sjöfartsverket. Publ. 3 mars 2021

Lake Vänern and Trollhätte Canal

* 15679

Chart: 13, 135

Sweden. Lake Vänern and Trollhätte Canal. TSS Gälleudde and TSS Hindens rev in force.

Expired notices: 2021:844/15612(T)

TSS Gälleudde and TSS Hindens rev in lake Vänern are in force.

TSS Gälleudde	58-29N	012-30E
TSS Hindens rev	58-39N	012-45E

Bsp Göta kanal 2011/s31, s34, s35, Bsp Vänern 2018/s04, s08, s25, s34, s35, Trollhätte kanal - Dalslands kanal
2020/s24, s25, s26

Sjöfartsverket. Publ. 2 mars 2021