

Notices to Mariners, SWEDEN Swedish Maritime Administration



Areas in Swedish Notices to Mariners



SJÖFARTSVERKET

Editorial office
Swedish Maritime Administration
Ufs
601 78 NORRKÖPING
Sweden
tel: 0771 630 605
e-mail: ufs@sjofartsverket.se
Publisher:
Hydrographer Patrik Wiberg

ANNOUNCEMENTS

No Announcements in this booklet.

NOTICES

Bay of Bothnia

* 15161 (T)

Chart: 4, 41, 415, 421

Sweden. Bay of Bothnia. E of Byske. Tåme. Firing exercises. August 24 and 29.

Position: Approx.	64-55N	021-30E	Tåme Firing practice area
-------------------	--------	---------	---------------------------

Firing exercises will be carried out at Tåme firing range during times listed below. During these times the charted danger area "R 58" is closed for navigation within stated distance from shore.

During firing a red balloon is shown from the observation towers. Further information on VHF channel 16, call Tåme skjutfält, or phone +46 921 348 405 alt. +46 921 349 100.

Date	Time	Range from shore
August 24	0000 - 2400 LT	3.8 M
August 29	0800 - 1500 LT	3.2 M

Not shown in ENC.

Bsp Bottenviken 2018/s06, s07, s37, s38, s39, s40, s41, s42, s44

Försvarsmakten. Publ. 12 augusti 2020

Sea of Bothnia

* 15150 (T)

Chart: 5331

Sweden. Sea of Bothnia. Söderhamn. Otterhällan - Långrör. Geotechnical surveys

Time: August 18 - September 30

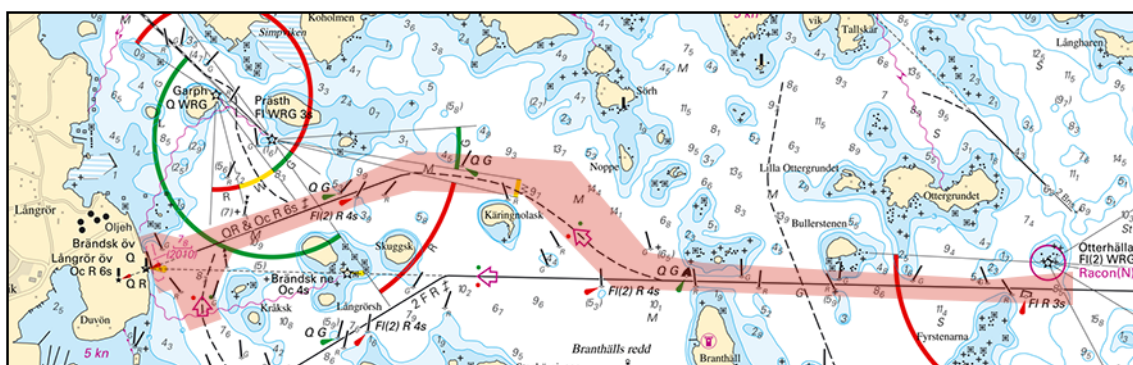
Geotechnical surveys are undertaken in the marked-out area in the chartlet.

Mariners are requested to pass with caution.

light Otterhällan	61-16,0N	017-14,8E
Långrör	61-16,0N	017-10,0E

Not shown in ENC.

Bsp Bottenhavet S 2019/s36



Geotechnical surveys

Geosigma AB. Publ. 12 augusti 2020

Northern Baltic

* 15051 (T)

Chart: 61, 616, 6162, 6163, 62

Sweden. Northern Baltic. E of Utö. Firing exercises. August 26 - 28.

Position: Approx.	58-54N	018-20E	Utö Firing practice area
-------------------	--------	---------	--------------------------

Firing exercises will be carried out within Utö firing range during stated times. The current extension of the closed area is given in the table.

Signal ammunition is used during hours of darkness.

Information during practice times VHF channel 16, call Utö skjutfält, or phone +46 8 501 570 45. Information about upcoming practice times, phone: +46 10 823 18 23, Muskö Sjöcentral.

Date	Time	Range from shore
August 26 - 28	0900 - 1600 LT	4.4 M

Not shown in ENC.

BSP Stockholm S 2020/s17, s18, s19, s37

Försvarsmakten. Publ. 12 augusti 2020

Central Baltic

* 15128

Chart: 622

Sweden. Central Baltic. SE of Valdemarsvik. E of Stora Ålö. Brandholmen. Buoyage.

Replace	port hand spar buoy with east cardinal mark	58-07,552N	016-52,208E
---------	---	------------	-------------

Bsp Ostkusten 2019/s45, s46

Transportstyrelsen. Publ. 12 augusti 2020

* 15143 (T)

Chart: 71

Sweden. Central Baltic. E of Öland. SE of Kårehamn. Oil recovery from wreck.

Time: August 19 - October 10, 2020.

During the period oil recovery from wreck will be in progress by vessel 'Vina/OVJJ2'. Vessel will be anchored with 6 anchor 500 - 800 meters from the wrecks position. Anchors are marked with light buoys equipped with radar reflectors. Vessel can be contacted on VHF Ch 16 or telephone: +45 246 16 611.

Minimum CPA of 0,5 nm.

Wreck	56-48,308N	017-12,282E
-------	------------	-------------

Bsp Kalmarsund 2019/s07

JD-Contractors A/S. Publ. 12 augusti 2020

* 15151 (T)

Chart: 623

Sweden. Central Baltic. Loftahammar. Submarine power cable. Works.

Time: Augusti 17 - October 4, 2020.

Submarine power cable laying E and SE of Loftahammar. Diving operations will be performed.

Mariners are requested to pass the areas with caution and pay extra attention to when diving signals are shown.

Contact: Project manager +46 703 676560. Vessel 'Ambjörn av Smågö/SJNE' monitors VHF CH 16/72 and telephone +46 730-55 11 40.

Working area 1	57-51,3N	016-43,9E
Working area 2	57-52,4N	016-44,1E
Working area 3	57-54,0N	016-47,6E

Not shown in ENC.

Bsp Ostkusten 2019/s48, s49, s50, s51

Oppunda Kraftkonsult AB. Publ. 10 augusti 2020

Kattegat

* 14744

Chart: 9312

Sweden. Kattegat. Port of Gothenburg. Berth 556. Dalanäs.

Insert	name 'Dalanäs'	a)	57-41,570N	011-53,950E
--------	----------------	----	------------	-------------

Bsp Västkusten S 2019/s58

Göteborgs stad. Publ. 12 augusti 2020

* 15145

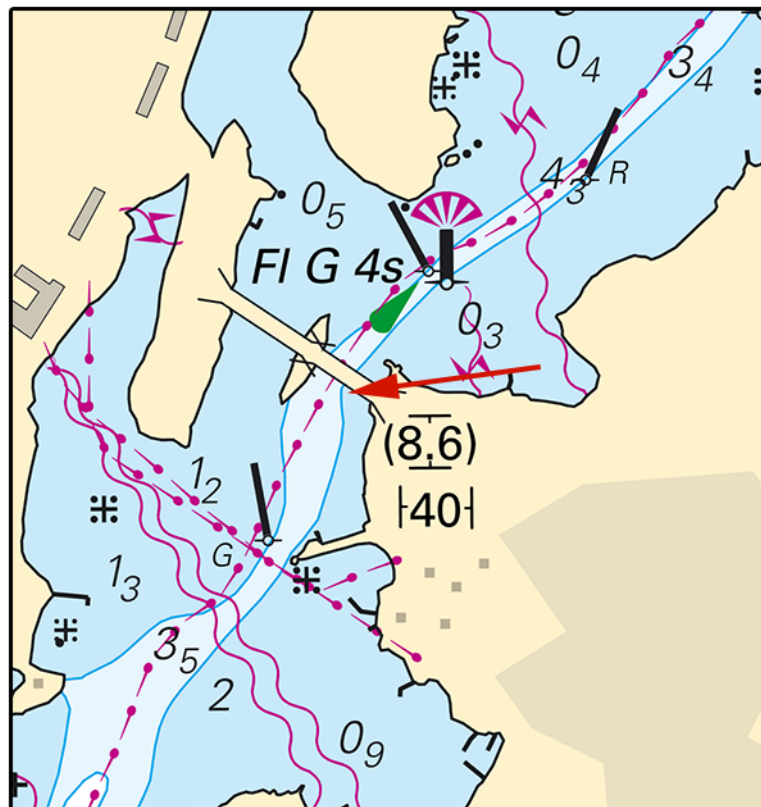
Chart: 931, 9313

Sweden. Kattegat. Styrso. Donsöbron. Amended depths.

A hydrographic survey in the sound between Styrso and Donsö has shown other depths than charted. Important amendment is presented below, and will be published in the next print of the affected chart. The changes are available as an ENC update.

Amend	3m depth contour so that it encircles position a)	a)	57-36,408N	011-47,762E	see chartlet
--------------	---	----	------------	-------------	--------------

Bsp Västkusten S 2019/s19, s50



Donsöbron

Sjöfartsverket Publ. 12 augusti 2020

* 15149 (T)

Chart: 9312, 9313

Sweden. Kattegat. Port of Gothenburg. Arendal. Geotechnical survey.

Time: August 24 - October 2

Geotechnical surveys in the approach to Arendal.

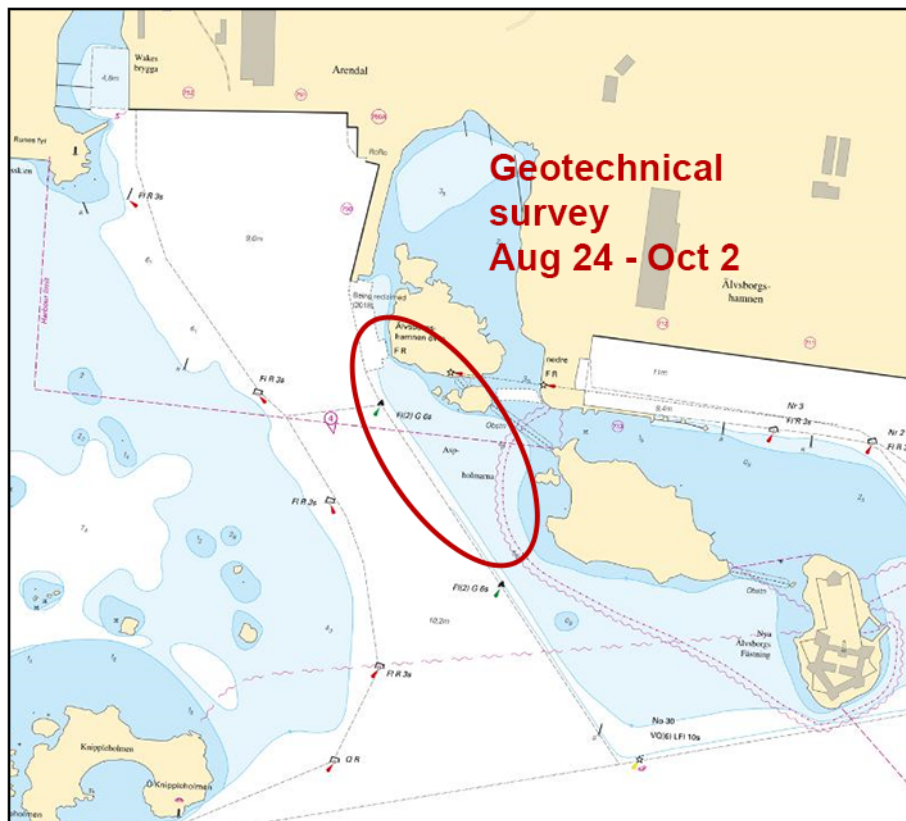
Mariners are requested to pass with caution.

Contact: Tugboat 'Frog Rana' on VHF ch 13, or 'VTS Göteborg' on VHF ch 13.

Geotechnical surveys	57-41,40N	011-49,40E
----------------------	-----------	------------

Not shown in ENC.

Bsp Västkusten S 2019/s46, s47, s54, s56



Geotechnical drillings. Port of Gothenburg.

Frog Marine Service. Publ. 12 augusti 2020

*** 15154 (T)**

Chart: 923

Sweden. Kattegat. Hallands väderö. Torekov. Swimming competition.

Time: August 30, 0930 - 1300 LT

Swimming competition between 'Hallands Väderö' and Torekov. Mariners are requested to keep sharp lookout and to respect instructions from safety crew.

More information: <http://www.torekovopenwater.se/>

Hallands väderö	a)	56-26,10N	012-34,50E
Torekov	b)	56-25,60N	012-37,30E

Not shown in ENC.

Bsp Sydkusten 2012/s08, s09, Bsp Västkusten S 2019/s32, s62

Torekov Open Water. Publ. 11 augusti 2020

*** 15160 (T)**

Chart: 9312

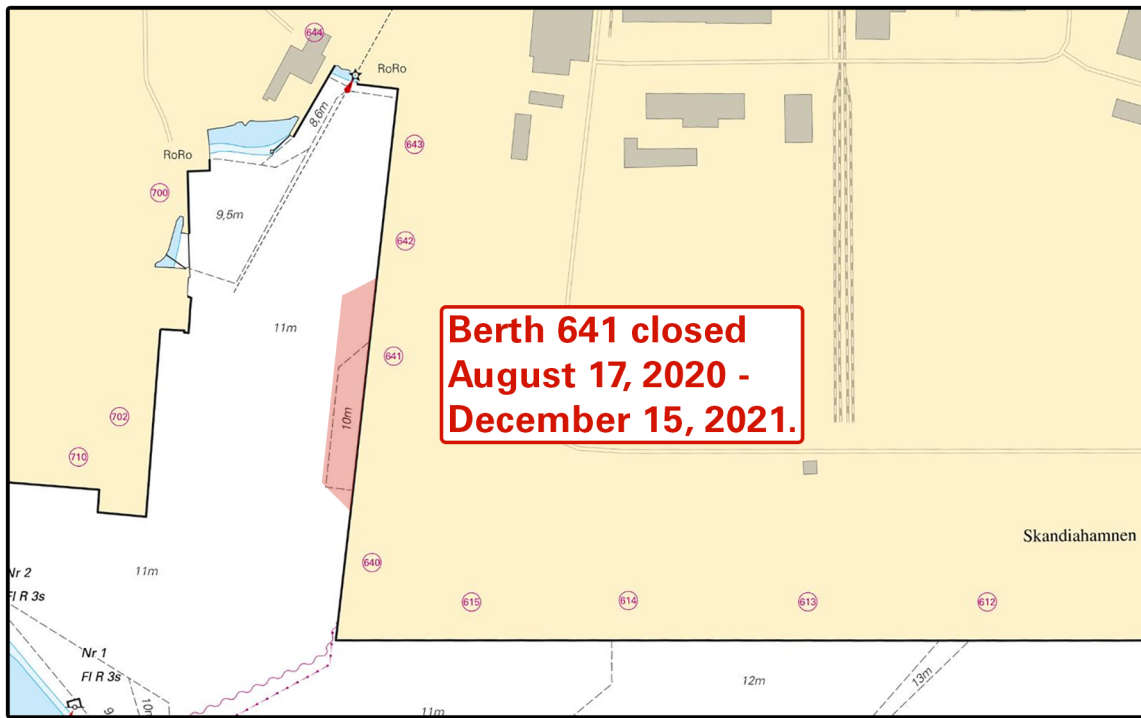
Sweden. Kattegat. Gothenburg. Skandiahamnen. Repairworks. Berth closed.

Time: August 17 2020 - December 15, 2021.

Berth 641 in Skandiahamnen closed. Mooring at berth is not allowed between bollards 312 and 329.

berth 641, Skandiahamnen	57-41,48N	011-50,81E
--------------------------	-----------	------------

Bsp Västkusten S 2019/s47



Skandiahamnen

Port of Gothenburg Publ. 12 augusti 2020

Skagerrak

* 15146

Chart: 937

Sweden. Skagerrak. Strömstad. Holmen grå. Flatskär. Depth.

A hydrographic survey in the approach to Strömstad has shown other depths than charted. Important amendments are shown in the table below, and will be published in the next print of the affected chart. The changes are available as an ENC update.

Amend	depth 13 m to 12,5 m	a)	58-56,110N	011-06,150E
Amend	depth 3,5 m to 3,4 m	b)	58-56,190N	011-06,380E

Bsp Västkusten N 2019/s09, s35

Sjöfartsverket. Publ. 12 augusti 2020