

Notices to Mariners, SWEDEN Swedish Maritime Administration



Areas in Swedish Notices to Mariners



SJÖFARTSVERKET

Editorial office
Swedish Maritime Administration
Ufs
601 78 NORRKÖPING
Sweden
tel: 0771 630 605
e-mail: ufs@sjofartsverket.se
Publisher:
Hydrographer Patrik Wiberg

ANNOUNCEMENTS

No Announcements in this booklet.

NOTICES

Bay of Bothnia

* 14655

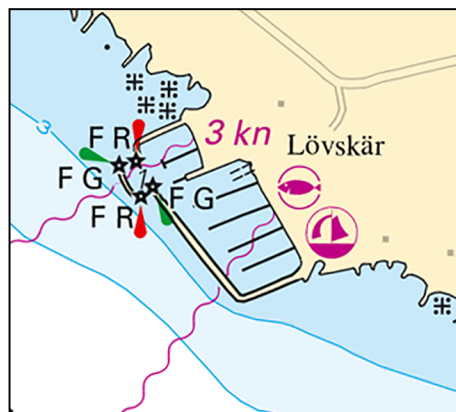
Chart: 4101

Sweden. Bay of Bothnia. Luleå. Lövsjär marina. Speed restriction.

The maximum speed in Lövsjär marina is 3 knots.

65-32,50N	022-22,13E
-----------	------------

Bsp Bottenviken 2018/s60



Lövsjär

Länsstyrelsen Norrbotten Publ. 20 maj 2020

* 14894

Chart: 4101

Sweden. Bay of Bothnia. Luleå. Finnklipporna. Sandön. Depths.

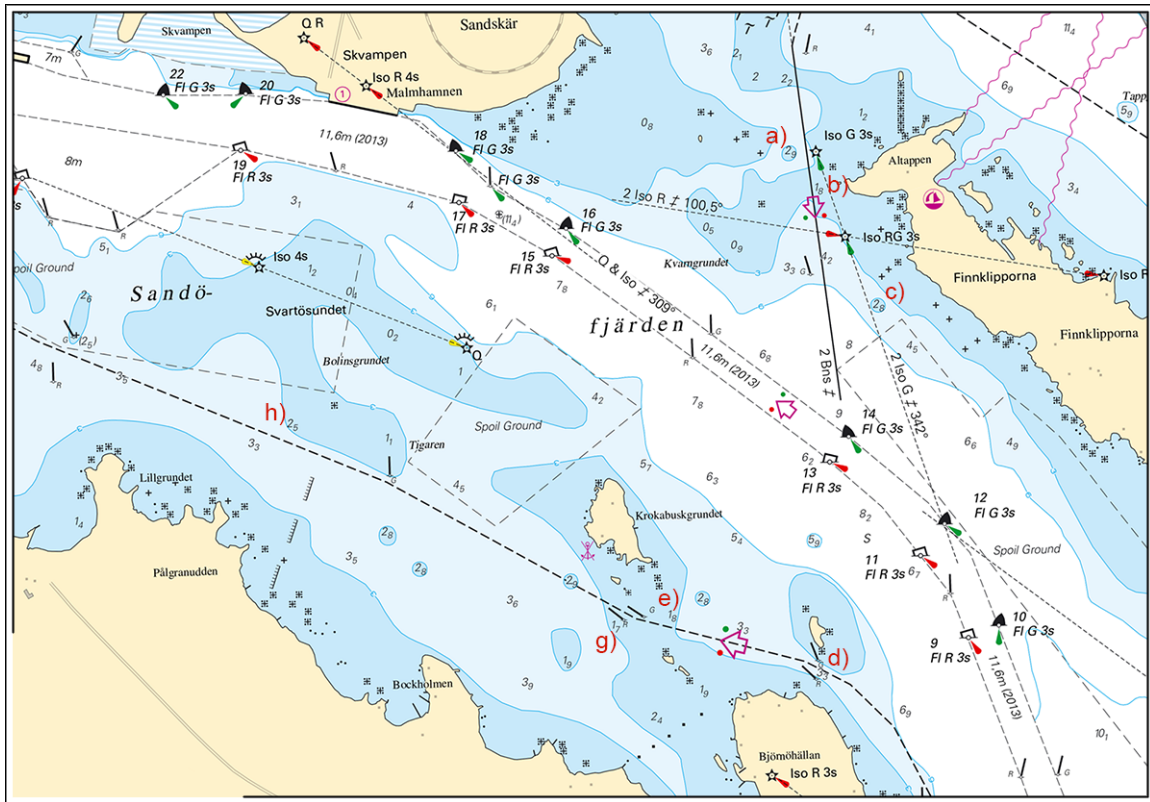
A hydrographic survey has shown other depths than charted.

Important amendments are presented in the table, and will be published in the next print of the affected chart.

The changes are available as an ENC update.

Insert	depth 2.9 m with 3 m depth contour	a)	65-32,570N	022-19,200E
Insert	depth 1.8 m	b)	65-32,500N	022-19,330E
Insert	depth 2.8 m with 3 m depth contour	c)	65-32,270N	022-19,590E
Insert	depth 3.3 m	d)	65-31,560N	022-19,280E
Insert	depth 1.8 m	e)	65-31,680N	022-18,580E
Delete	depth 1.5 m	f)	65-31,690N	022-18,460E
Insert	depth 1.7 m	g)	65-31,660N	022-18,330E
Insert	depth 2.5 m	h)	65-32,070N	022-16,840E

Bsp Bottenviken 2018/s58, s60, s61



Luleå

Sjöfartsverket. Publ. 20 maj 2020

The Quark

* 14930

Chart: 4, 42, 429, 5, 512

Sweden. The Quark. TSS in Norra Kvarken. Buoyage back in position.

Expired notices: 2019:786/14592(T)

The following buoys in the traffic separation scheme 'TSS in Norra Kvarken' are back in position.

East cardinal light buoy, Odelgrund	a)	63-25,53N	020-33,93E
North cardinal light buoy, Östra Kvarken	b)	63-32,89N	020-51,03E

Bsp Bottenhavet N 2019/s34, s35

Sjöfartsverket. Publ. 14 maj 2020

Sea of Bothnia

* 14948

Chart: 524

Sweden. Sea of Bothnia. Sundsvall. Light Draghällan.

Expired notices: 2020:799/14807(T)

Light Draghällan is back in operation.

Light Draghällan	62-20,39N	017-26,36E
------------------	-----------	------------

Bsp Bottenhavet N 2019/s08, Bsp Bottenhavet S 2019/s08, s10

Sjöfartsverket. Publ. 20 maj 2020

Gulf of Riga

14937

Chart: 6

Estonia. Gulf of Riga. SE of Saaremaa. Wreck.

Insert	wreck least depth known by sounding 16.4 m	58-11,1N	022-59,7E
--------	--	----------	-----------

Northern Baltic

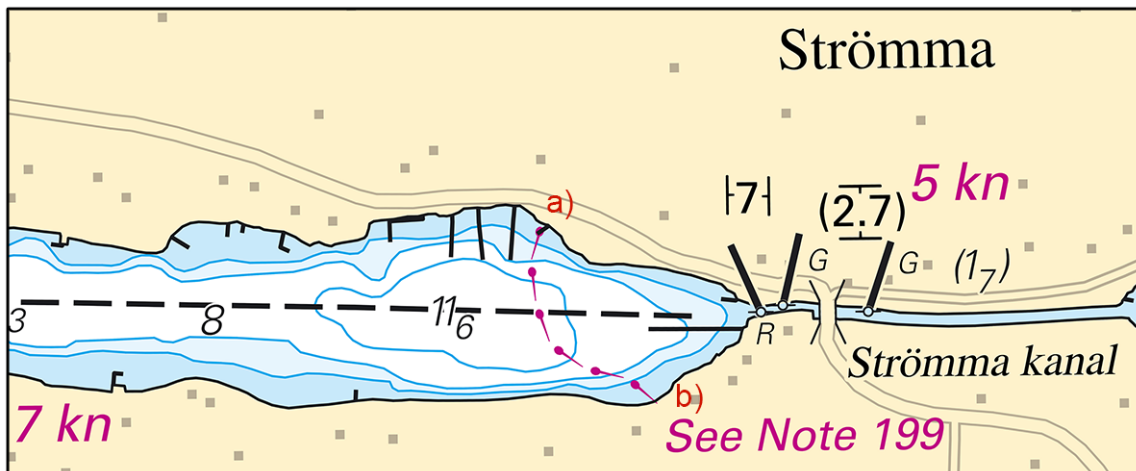
* 14870

Chart: 6143, 6145

Sweden. Northern Baltic. Stockholm. Värmdölandet. Strömma. Supply pipeline.

Insert	supply pipeline between a) - b)	a)	59-17,230N	018-32,580E
		b)	59-17,110N	018-32,720E

Bsp Stockholm M 2018/s22, s28, Bsp Stockholm M 2020/s22, s28



Strömma

Värmdö kommun. Publ. 20 maj 2020

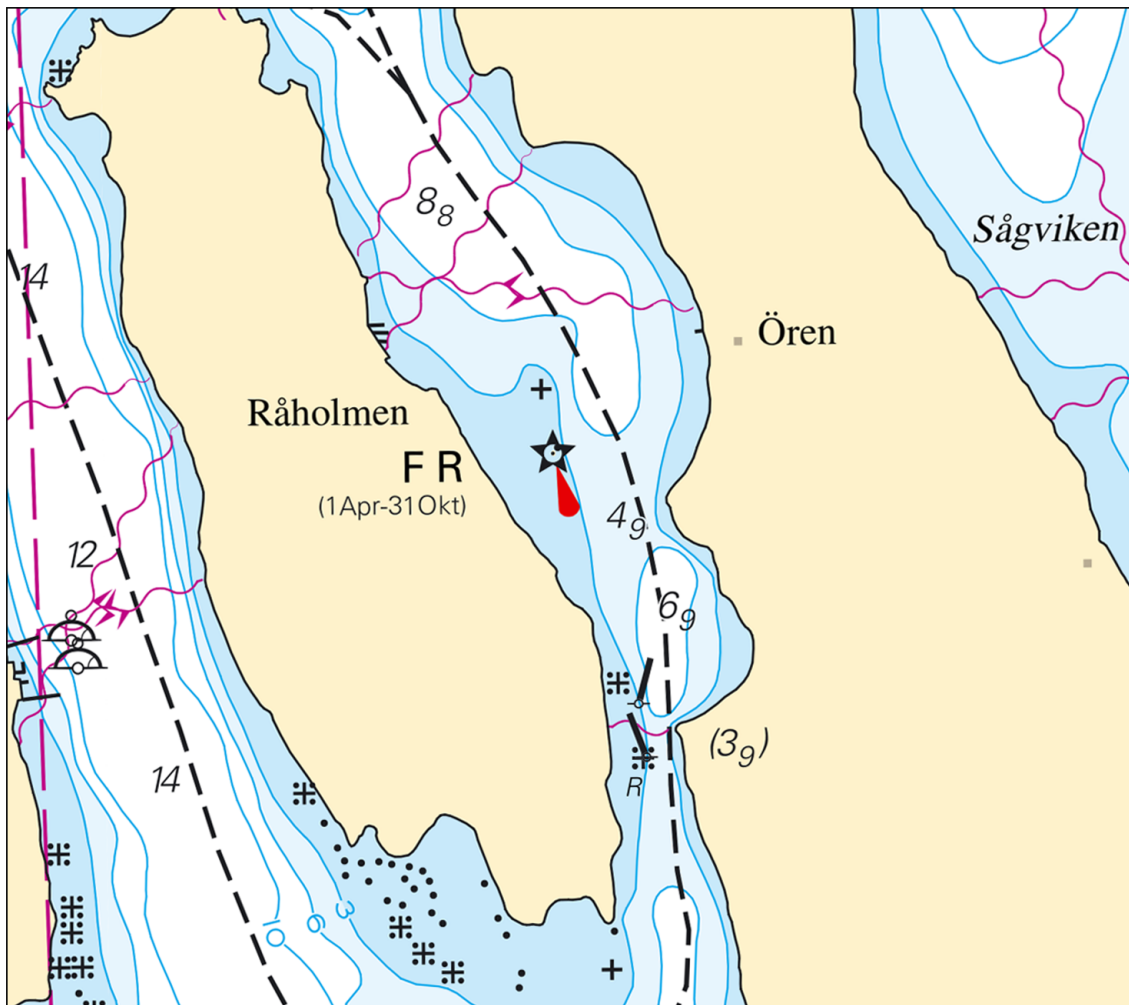
* 14904

Chart: 617, 6171, 6172

Sweden. Northern Baltic. S of Nynäshamn. Järflotta. Råholmen. Light.

Insert	light F R (1Apr - 31Oct)	58-50,158N	017-53,124E
--------	--------------------------	------------	-------------

Bsp Stockholm S 2018/s27, s38, BSP Stockholm S 2020/s27, s38



Råholmen. Light.

Transportstyrelsen. Publ. 20 maj 2020

* 14939

Chart: 616, 6162, 6171

Sweden. Northern Baltic. Port of Nynäshamn. Mooring buoy back in position.

Expired notices: 2019:780/14477(T)

The southern mooring buoy in Nynäshamn is back in position.

Mooring buoy	58-54,505N	017-57,721E
--------------	------------	-------------

Bsp Stockholm S 2018/s20, s21, s26, s35, BSP Stockholm S 2020/s20, s21, s26, s35

Stockholms Hamnar. Publ. 20 maj 2020

Central Baltic

* 14885

Chart: 622

Sweden. Central Baltic. E of Valdemarsvik. Stora Ålö. Svartbådan. Buoyage.

Replace	starboard hand spar buoy with west cardinal spar buoy	58-05,37N	016-51,53E
---------	---	-----------	------------

Bsp Ostkusten 2019/s45

Sjöfartsverket. Publ. 20 maj 2020

Southern Baltic

* 14816

Chart: 7411, 7413

Sweden. Southern Baltic. Karlskrona. Verkö. Baltic port. Special spar buoys withdrawn.

Delete	special purpose spar buoy	a)	56-09,643N	015-38,035E
Delete	special purpose spar buoy	b)	56-09,562N	015-38,060E
Delete	special purpose spar buoy	c)	56-09,508N	015-38,356E
Delete	special purpose spar buoy	d)	56-09,490N	015-38,642E

Bsp Hanöbukten 2018/s40, s41, s42, s43

NCC. Publ. 20 maj 2020

*** 14942**

Chart: 7, 71, 74, 741, 7411, 83

Sweden. Southern Baltic. Karlskrona. Buoyage restored.

Expired notices: 2020:795/14741(T)

The starboard hand light buoy Karlskrona angöring 'Nr 0' has been restored.

Starboard hand light buoy 'Nr 0' Fl G 2s	56-03,623N	015-34,397E
--	------------	-------------

Bsp Hanöbukten 2018/s05, s06, s16, s38

Sjöfartsverket, Norrköping. Publ. 20 maj 2020

The Sound

14910

Chart: 921

Sweden. The Sound. Köpenhamn. Middelgrund. Buoyage.

Insert	special purpose light buoy, Fl(5) Y 20s	55-42,731N	012-38,577E
---------------	---	------------	-------------

Bsp Sydkusten 2012/s14, s15

Dk NtM 041-4/20. Publ. 20 maj 2020

*** 14924**

Chart: X922

Sweden. The Sound. Landskrona. Pilot boarding place.

Delete	pilot boarding place	a)	55-53,5N	012-45,8E
Insert	pilot boarding place	b)	55-54,0N	012-45,4E

Bsp Sydkusten 2012/s13, s31

Sjöfartsverket. Publ. 20 maj 2020

Skagerrak

*** 14932**

Chart: 937

Sweden. Skagerrak. Kosterfjorden. Buoy back in position.

Expired notices: 2019:777/14408(T)

Special light buoy back in position.

Special light buoy	58-52,983N	011-05,894E
--------------------	------------	-------------

Not shown in ENC.

Bsp Västkusten N 2019/s09

SMHI. Publ. 20 maj 2020

Lake Vänern and Trollhätte Canal

*** 14853**

Chart: 13, 134, 135

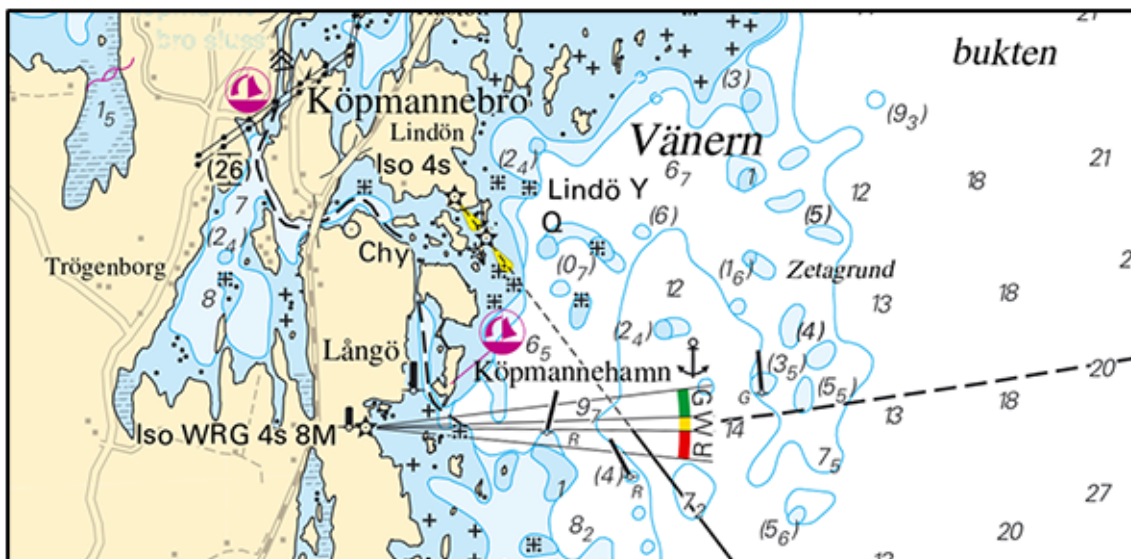
Sweden. Lake Vänern and Trollhätte Canal. Dalbosjön. Köpmannebrobukten. Långö. Light.

Delete	leading light Q R	a)	58-45,628N	012-30,624E
Delete	leading light Iso R 4 s	b)	58-45,629N	012-30,708E
Delete	leading line between a) - c)	c)	58-45,634N	012-32,035E

Insert	sector light Iso WRG 4s 8M	Långö Yttre	a)	58-45,629N	012-30,708E
Insert	beacon		b)	58-45,628N	012-30,624E

Bearing (from sea towards light)	Colour
263 - 268	G
268 - 270.5	W
270.5 - 275.5	R
275.5 - 263.0	Dk

Bsp Göta kanal 2011/s30, s31, s63, Bsp Vänern 2018/s08, s24, s25, s50, Trollhätte kanal - Dalslands kanal 2020/s26, s27, s29, s40



Köpmannehamn

Sjöfartsverket. Publ. 20 maj 2020

* 14900

Chart: 134

Sweden. Lake Vänern and Trollhätte Canal. Åmål. Svegön - Nötön. Speed restriction.

Starting June 5, 2020, a speed limit of 5 knots is in force in the fairway west of Svegön.

Insert	5 kn	59-00,4N	012-42,7E
--------	------	----------	-----------

Bsp Vänern 2018/s16, s17

Länsstyrelsen Västra Götalands län. Publ. 20 maj 2020

* 14951

Chart: 1353

Sweden. Lake Vänern and Trollhätte Canal. Brinkebergskulle and N of Lilla Edet. Ice booms removed.

Expired notices: 2019:781/14487(T)

Ice booms have now been removed S of Brinkebergskulle lock and N of Lilla Edet.

Charted ice booms and buoyage shall not be deleted

Smörkullen, N of Lilla Edet	a)	58-09,13N	012-07,78E
E of Bommen, in the fairway to Vargön	b)	58-20,09N	012-21,37E

Bsp Göta kanal 2011/s43, s48

Sjöfartsverket. Publ. 20 maj 2020