

Notices to Mariners, SWEDEN Swedish Maritime Administration



Areas in Swedish Notices to Mariners



SJÖFARTSVERKET

Editorial office
Swedish Maritime Administration
Ufs
601 78 NORRKÖPING
Sweden
tel: 0771 630 605
e-mail: ufs@sjofartsverket.se
Publisher:
Hydrographer Patrik Wiberg

ANNOUNCEMENTS

* 14777

Chart: 6212

New print of charts. New edition of chart 6212.

A new print of the following nautical chart is available from March 2020:

Chart	Edition
6212	12.0 NEW EDITION

A NEW EDITION is a print of an existing chart, containing changes significant to navigation which are not possible to fully describe in the Swedish NtM.

Sjöfartsverket, Norrköping. Publ. 16 mars 2020

NOTICES

Bay of Bothnia

14776

Chart: 41

Finland. Bay of Bothnia. Oulu. Fairway.

Amend	maximum authorized draught from 5,4m to 5m between position a) - b)	a)	65-01,08N	025-20,72E
		b)	65-02,02N	025-25,84E

Finnish NtM 2020:7/40. Publ. 18 mars 2020

Northern Baltic

* 14761

Chart: 611

Sweden. Northern Baltic. Port of Norrtälje. Berths.

Delete	berth number 2, 4, 6 and text "RoRo"	59-45,449N	018-42,802E

Bsp Stockholm N 2018/s62, Bsp Stockholm N 2020/s62

Sjöfartsverket. Publ. 18 mars 2020

* 14784

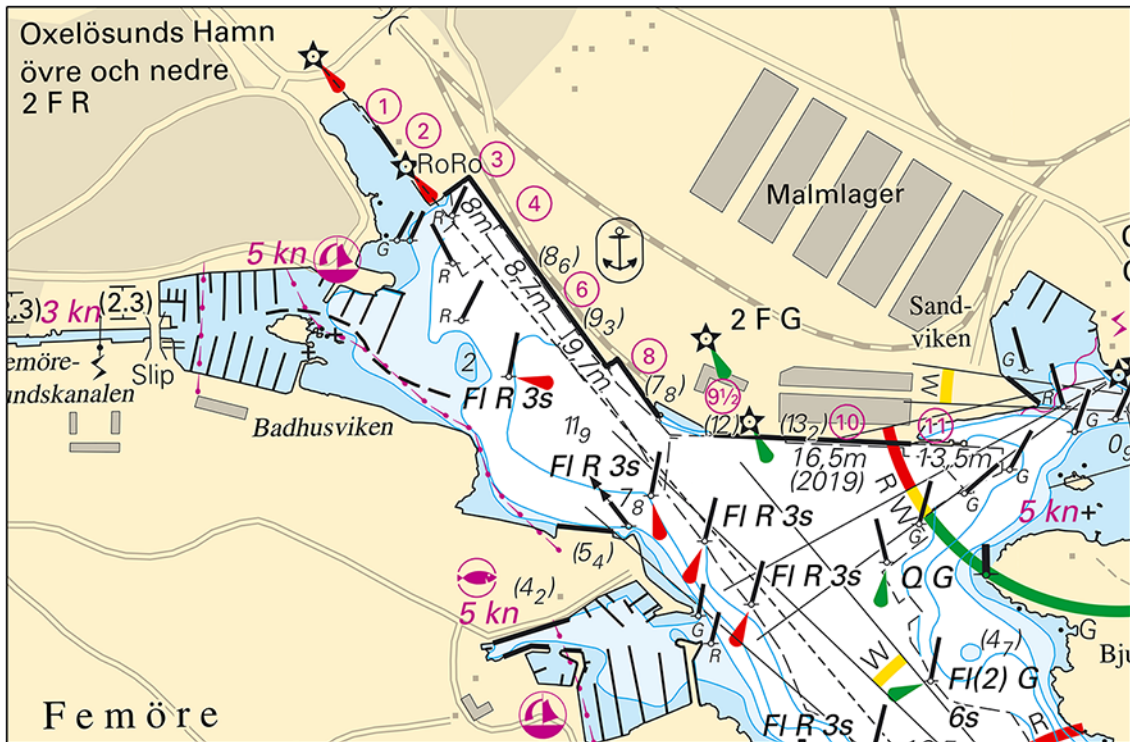
Chart: 6211

Sweden. Northern Baltic. Oxelösund. Depths.

A hydrographic survey in Oxelösund has shown other depths than charted. Important amendments are presented in the table below, and will be published in the next print of the affected chart. The changes are available as an ENC update.

Delete	7.8 m	a)	58-39,903N	017-06,467E
Amend	8.3 m to 8.6 m	b)	58-39,833N	017-06,572E
Amend	9.2 m to 9.3 m	c)	58-39,754N	017-06,687E
Amend	8 m to 7.8 m	d)	58-39,696N	017-06,794E
Amend	13 m to 13.2 m	e)	58-39,653N	017-07,078E
Delete	13.3 m	f)	58-39,645N	017-07,422E

Bsp Ostkusten 2019/s20, s27



Port of Oxelösund

Sjöfartsverket. Publ. 18 mars 2020

Central Baltic

* 14745

Chart: 731

Sweden. Central Baltic. Gotland. Visby. Buoyage.

Insert	special purpose light buoy FI 3s Y	57-38,6N	018-17,0E
--------	------------------------------------	----------	-----------

Kungliga Svenska Segelsällskapet. Publ. 18 mars 2020

Southern Baltic

* 14755

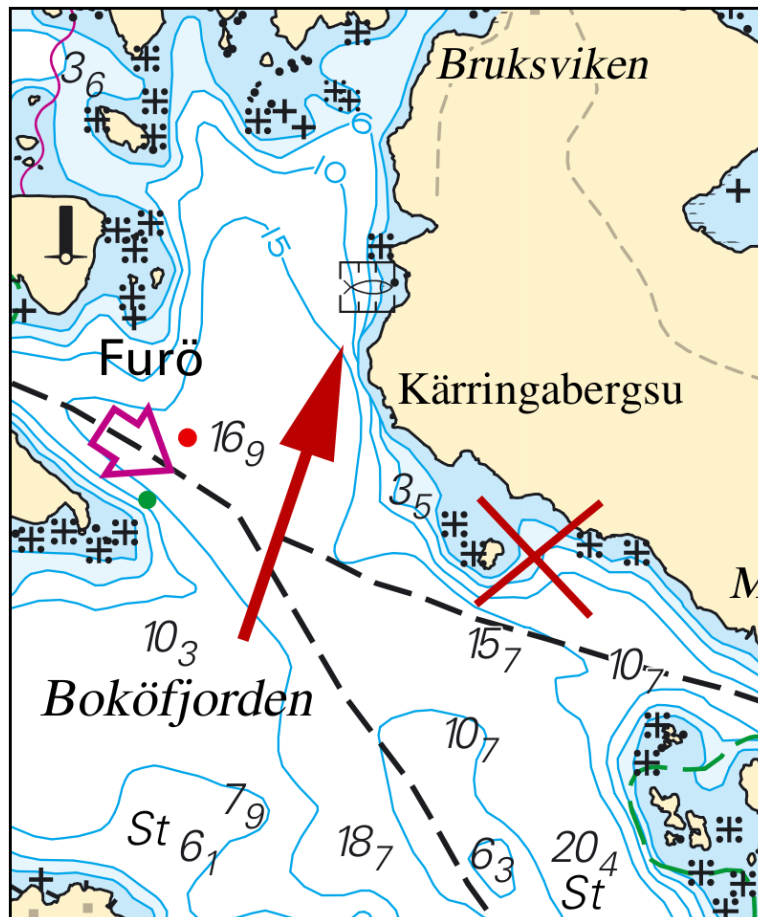
Chart: 742

Sweden. Southern Baltic. E of Karlshamn. NE of Tärnö. Boköfjorden. Fish farm.

Expired notices: 2019:771/14303

Move	marine farm from a) - b)	a)	56-09,26N	015-00,03E
		b)	56-09,57N	014-59,65E

Bsp Hanöbukten 2018/s21



Fish farm in Boköfjorden

SLU, Sveriges Lantbruksuniversitet. Publ. 17 mars 2020

The Sound

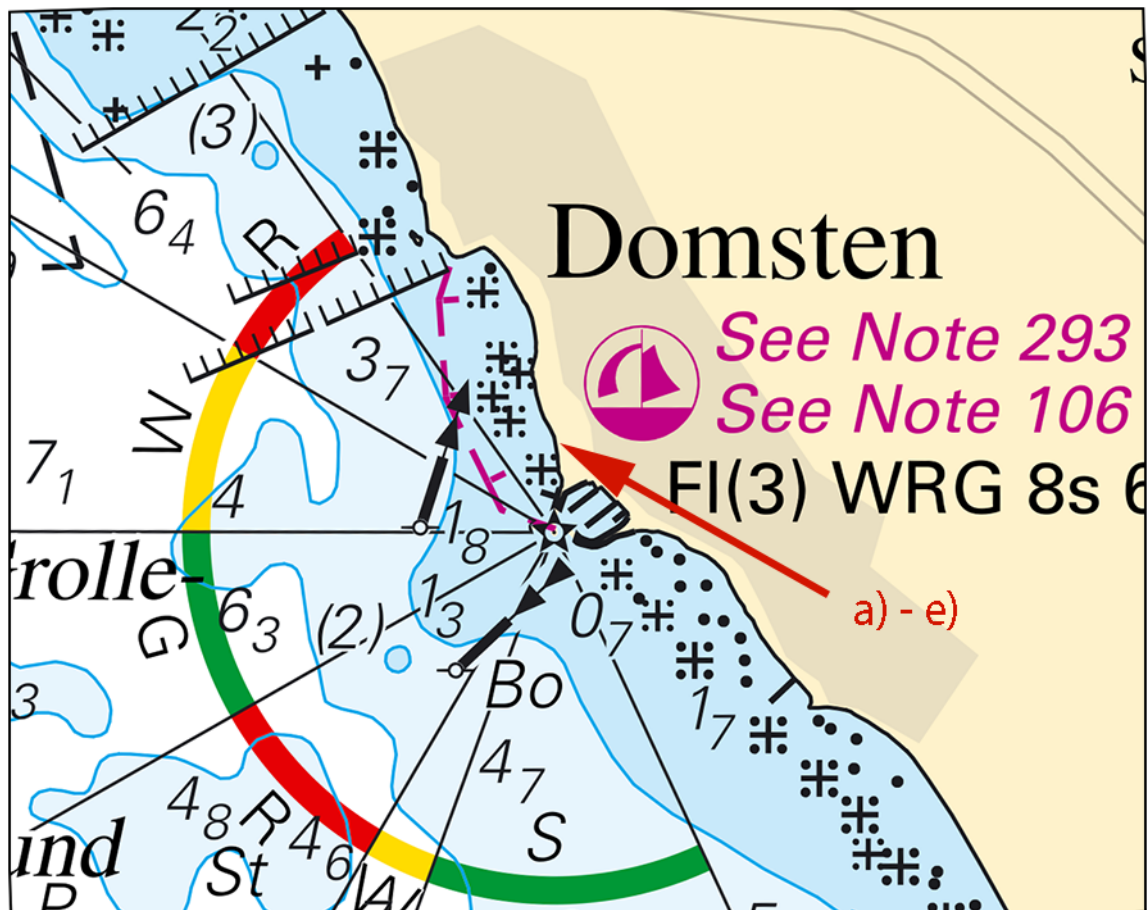
* 14502

Chart: 922

Sweden. The Sound. Domsten. Restricted area. New Note.

Prohibition of traffic with motorized vessels applies annually between May 15 and September 15 in the following water area.

Insert	restricted area, position a) - e) and text 'See Note 293' according to chartlet	a)	56-07,266N	012-36,009E
		b)	56-07,220N	012-35,983E
		c)	56-07,118N	012-35,996E
		d)	56-07,002N	012-36,099E
		e)	56-06,982N	012-36,199E
Insert	Note 293			



Domsten. Restricted area.

Note 293

RESTRICTED AREA BY THE BEACH

Prohibition of traffic with motorized vessels applies annually between May 15 and September 15.

FÖRBUDSOMRÅDE VID BADPLATS

Förbud mot trafik med motordrivet fartyg gäller årligen under tiden 15 maj - 15 september.

Länsstyrelsen Skåne. Publ. 18 mars 2020

* 14657

Chart: 9221

Sweden. The Sound. Helsingborg. Restricted areas. New Note.

Prohibition of traffic with motorized vessels applies annually between May 15 and September 15 in the following water areas.

Insert	prohibited area, position a) - j) and text 'See Note 293' according to chartlet	a)	56-03,682N	012-40,786E
		b)	56-03,643N	012-40,647E
		c)	56-03,580N	012-40,695E
		d)	56-03,510N	012-40,746E
		e)	56-03,449N	012-40,729E
		f)	56-03,369N	012-40,715E
		g)	56-03,284N	012-40,732E
		h)	56-03,243N	012-40,802E
		i)	56-03,054N	012-40,829E
		j)	56-02,926N	012-40,956E
Insert	prohibited area, position k) - n) and text 'See Note 293' according to chartlet	k)	56-02,789N	012-41,131E
		l)	56-02,716N	012-41,042E
		m)	56-02,566N	012-41,125E
		n)	56-02,548N	012-41,127E
Insert	Note 293			

Bsp Sydkusten 2012/s32

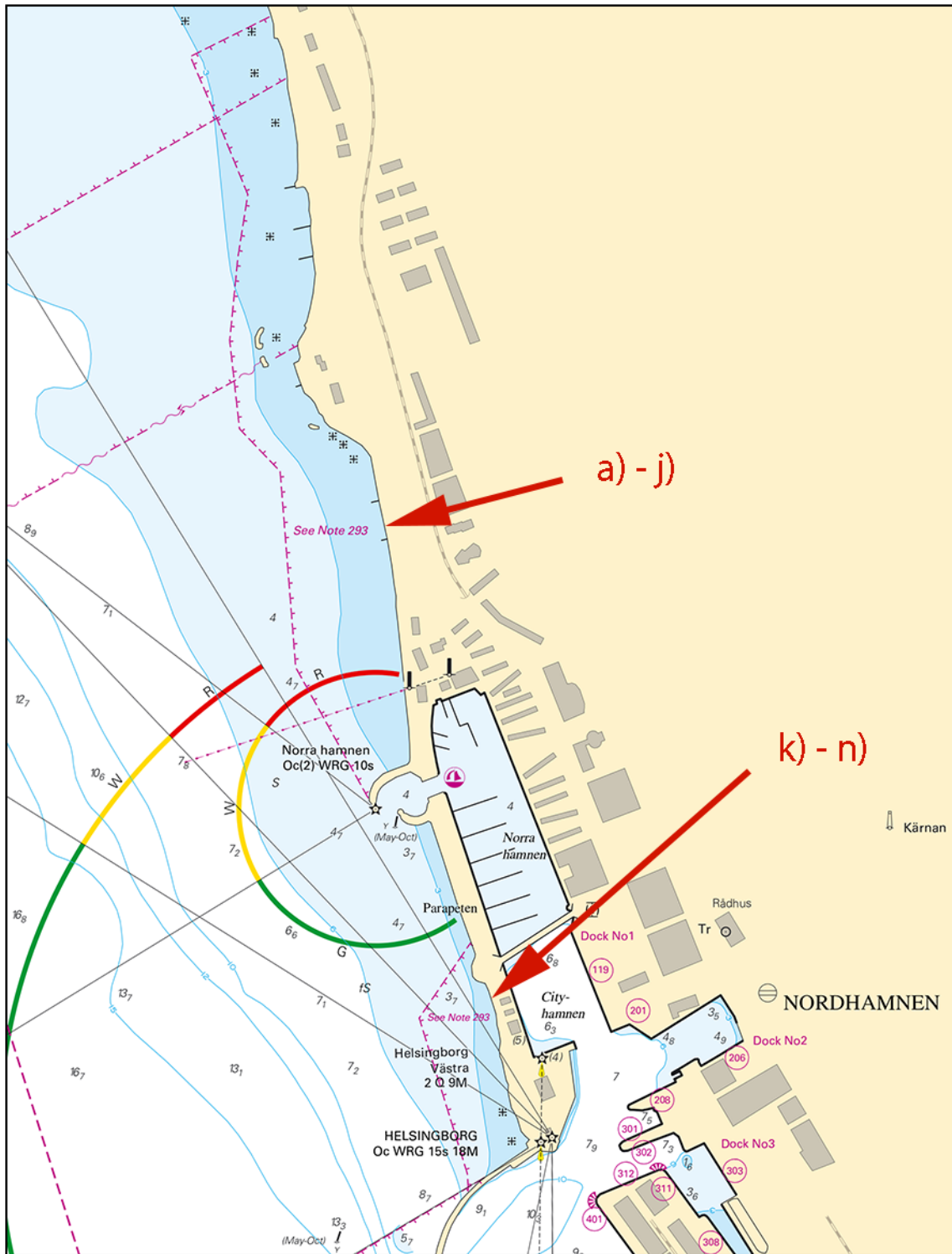
Note 293

RESTRICTED AREA BY THE BEACH

Prohibition of traffic with motorized vessels applies annually between May 15 and September 15.

FÖRBUDSOMRÅDE VID BADPLATS

Förbud mot trafik med motordrivet fartyg gäller årligen under tiden 15 maj - 15 september.



Helsingborg. Restricted areas.

Länsstyrelsen Skåne. Publ. 18 mars 2020

* 14658

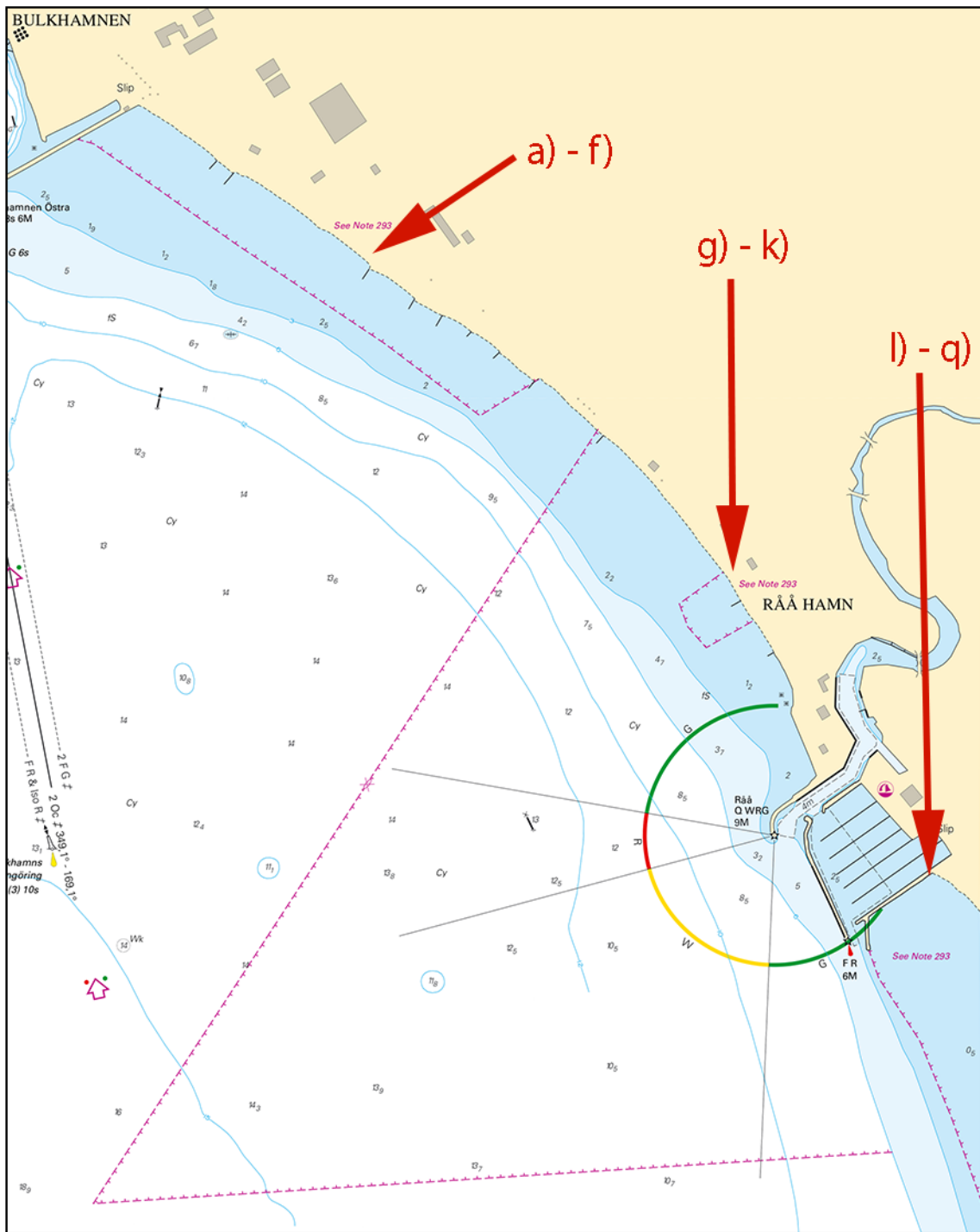
Chart: 922, 9221

Sweden. The Sound. Råå. Rydebäck. Restricted areas. New Note.

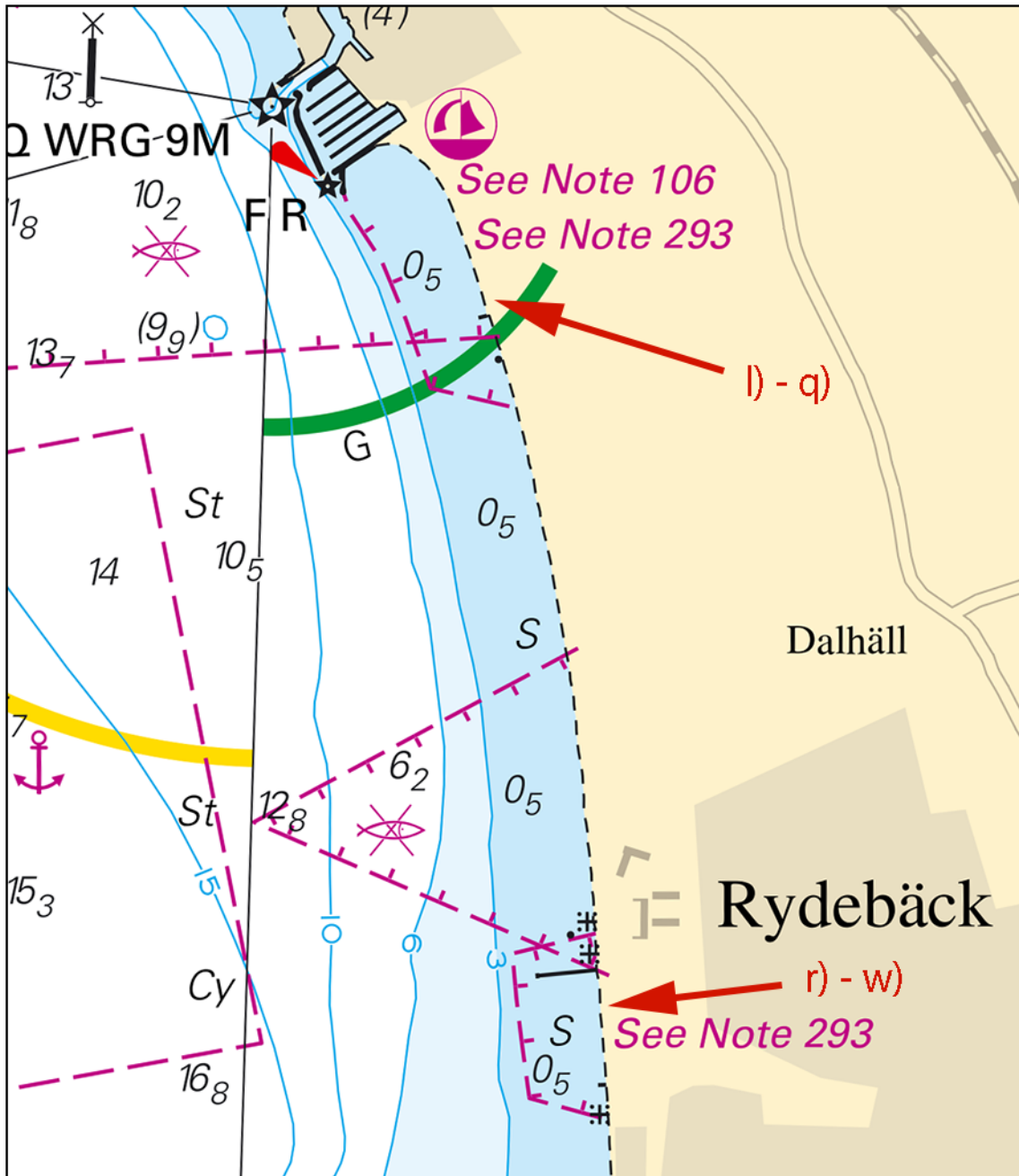
Prohibition of traffic with motorized vessels applies annually between May 15 and September 15 in the following water areas.

Insert	prohibited area, position a) - f) and text 'See Note 293' according to chartlet	a)	56-00,324N	012-42,902E
		b)	56-00,318N	012-42,941E
		c)	56-00,193N	012-43,257E
		d)	56-00,068N	012-43,590E
		e)	55-59,978N	012-43,802E
		f)	56-00,025N	012-43,937E
Insert	prohibited area, position g) - k) and text 'See Note 293' according to chartlet	g)	55-59,782N	012-44,343E
		h)	55-59,743N	012-44,246E
		i)	55-59,714N	012-44,265E
		j)	55-59,688N	012-44,306E
		k)	55-59,722N	012-44,412E
Insert	prohibited area, position l) - q) and text 'See Note 293' according to chartlet	l)	55-59,310N	012-44,668E
		m)	55-59,275N	012-44,690E
		n)	55-59,197N	012-44,781E
		o)	55-59,102N	012-44,851E
		p)	55-58,986N	012-44,925E
		q)	55-58,953N	012-45,179E
Insert	prohibited area, position r) - w) and text 'See Note 293' according to chartlet	r)	55-58,081N	012-45,410E
		s)	55-58,048N	012-45,166E
		t)	55-57,973N	012-45,178E
		u)	55-57,903N	012-45,193E
		v)	55-57,808N	012-45,216E
		w)	55-57,772N	012-45,450E
Insert	Note 293			

Bsp Sydkysten 2012/s31, s35



Råå. Restricted areas.



Råå. Rydebäck. Restricted areas.

Note 293
RESTRICTED AREA BY THE BEACH
 Prohibition of traffic with motorized vessels applies annually between May 15 and September 15.
FÖRBUDSOMRÅDE VID BADPLATS
 Förbud mot trafik med motordrivet fartyg gäller årligen under tiden 15 maj - 15 september.

Länsstyrelsen Skåne. Publ. 18 mars 2020

* 14750

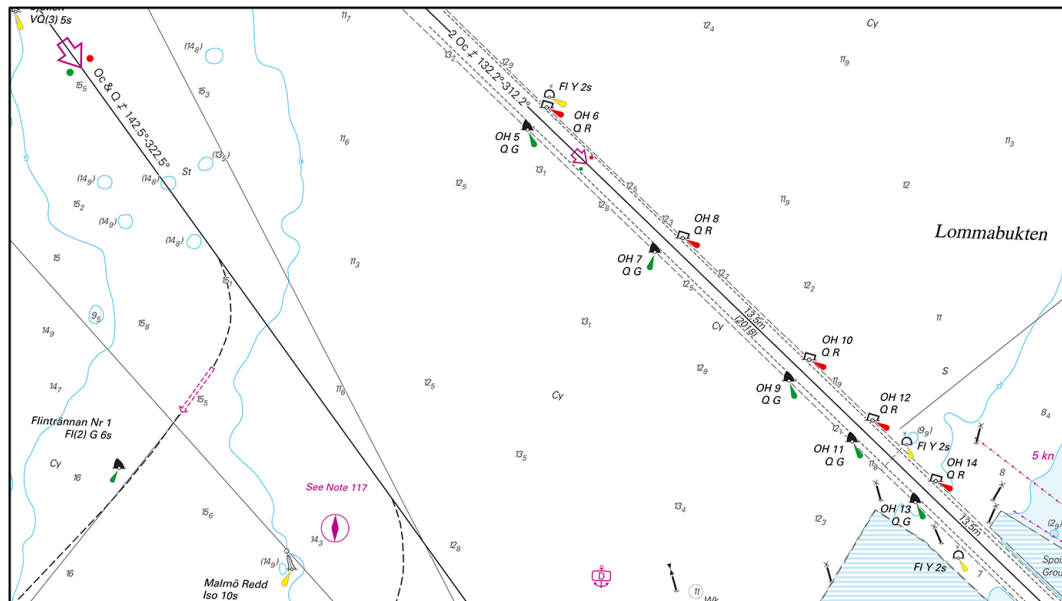
Chart: 8141, 9211

Sweden. The Sound. Approach to Malmö. Depths.

A hydrographic survey has shown other depths than charted. Important amendments are presented in the table below, and will be published in the next print of the affected chart. The changes are available as an ENC update.

Amend	dredged area depth to 13.5 m	55-39,1N	012-59,5E
-------	------------------------------	----------	-----------

Bsp Sydkusten 2012/s38, s39, s44, s45



Approach to Malmö

Sjöfartsverket. Publ. 18 mars 2020

Kattegat

* 14779

Chart: 1352, 9312

Sweden. Kattegat, Lake Vänern and Trollhätte Canal. Göteborg. Göta Älv. Bridges 'Marieholmsbroarna'. Eastern passage open.

Expired notices: 2020:791/14674(T)

Eastern passage past bridges 'Marieholmsbroarna' is re-opened from March 13, 2100 LT.

Bridges 'Marieholmsbroarna'	57-43,73N	011-59,59E
-----------------------------	-----------	------------

Not shown in ENC.

Bsp Göta kanal 2011/s59

Sjöfartsverket. Publ. 13 mars 2020

* 14783 (T)

Chart: 1352, 9312

Sweden. Kattegat, Lake Vänern and Trollhätte Canal. Göteborg. Göta Älv. Bridges 'Marieholmsbroarna'. Amended draught eastern passage.

See: 2020:798/14779

Time: Until further notice

When passing the bridges 'Marieholmsbroarna' in Gothenburg, the maximum draught is reduced when using the eastern passage.

Maximum draught is set to 5.0 m when the sea level is -30 cm BSCD2000 in the eastern passage.

Bridges 'Marieholmsbroarna'	57-43,73N	011-59,59E
-----------------------------	-----------	------------

Not shown in ENC.

Bsp Göta kanal 2011/s59

Sjöfartsverket. Publ. 13 mars 2020

* 14785 (T)

Chart: 92, 923, 924

Sweden. Kattegat. W of Halmstad. Ringenäs. Firing exercise. March 24.

Position: Approx.	56-40,8N	012-38,6E	Firing restriction area R41 A RINGENÄS
-------------------	----------	-----------	--

Firing will take place at R41A Ringenäs firing range during stated times. The dangerous area extends from the shore according to table below. A light on shore, VQ R, will be shown during firing.

For further information call +46 35 266 39 55, +46 35 536 77.

Date	Time	Range
March 24	0900 - 1630 LT	5.4 M

Not shown in ENC.

Bsp Västkusten S 2019/s29, s30

Försvarmakten, Lv6. Publ. 17 mars 2020

Skagerrak

* 14775 (T)

Chart: 932, 933, 9331

Sweden. Skagerrak. Lysekil. Bonden. Blast warning. March 19 - 24.

Time: March 19, 1200 LT - March 24, 2400 LT.

The Swedish Armed Forces will conduct underwater detonations in an area west of island Bonden off Lysekil.

Safe distance for vessels are 500 m, swimming 1300 m, diving 2700 m.

Contact with participating vessels can be made on VHF Ch 16 or telephone: +46 31 692 805.

blast area Bonden	a)	58-10,24N	011-13,30E
	b)	58-13,30N	011-13,30E
	c)	58-13,30N	011-17,48E
	d)	58-10,24N	011-17,48E

Bsp Västkusten N 2019/s18, s19, s22, s31, Bsp Västkusten S 2019/s10

Försvarmakten. Publ. 13 mars 2020

Lake Vänern and Trollhätte Canal

* 14746 (T)

Chart: 135, 1353

Sweden. Lake Vänern and Trollhätte Canal. Vänersborg. Bridge Järnvägsbron. Fairway closed.

Time: April 10, 0600 - 1600 LT.

The fairway passing under bridge Järnvägsbron is closed for all traffic.

Bridge Järnvägsbron	58-22,725N	012-18,540E
---------------------	------------	-------------

Not shown in ENC.

Bsp Göta kanal 2011/s62, Bsp Vänern 2018/s50, Trollhätte kanal - Dalslands kanal 2020/s40

Sjöfartsverket. Publ. 18 mars 2020