

Notices to Mariners, SWEDEN Swedish Maritime Administration



Areas in Swedish Notices to Mariners



SJÖFARTSVERKET

Editorial office
Swedish Maritime Administration
Ufs
601 78 NORRKÖPING
Sweden
tel: 0771 630 605
e-mail: ufs@sjofartsverket.se
Publisher:
Hydrographer Patrik Wiberg

ANNOUNCEMENTS*** 14472****Chart: 6181**

Södertälje. Bridges "Södra Kanalbroarna". Times for bridge opening. December 15, 2019 - December 12, 2020.

Opening times are valid December 15, 2019 - December 12, 2020.

Opening times:	
Daily	0017 - 0037 LT
	0202 - 0222 LT
	0300 - 0320 LT
	0420 - 0440 LT
	2305 - 2325 LT
Monday - Friday	1020 - 1040 LT
	1320 - 1340 LT
	1935 - 1955 LT
Saturday - Sunday	0736 - 0756 LT
	1420 - 1440 LT
Saturday	1120 - 1140 LT
	2035 - 2055 LT
Sunday	1005 - 1025 LT

Contact Södertälje Canal on telephone: +46 771-630 655 or VHF ch. 68 at least 4 hours before passage. Minor deviations may occur on holidays and on day before holiday. The stated times include swinging time of the bridges. Minor delays may occur due to crossing railway traffic.

Bridges 'Södra kanalbroarna'	59-11,09N	017-38,58E
------------------------------	-----------	------------

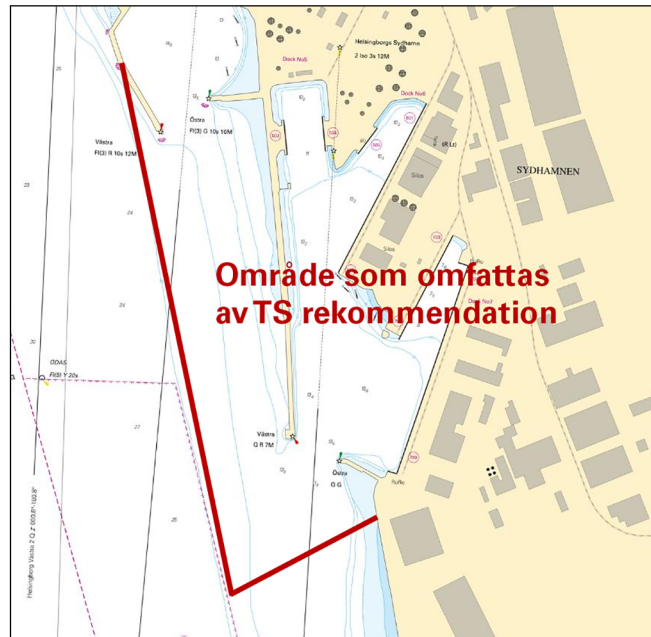
Bsp Mälaren - Hjälmarén 2016/s30, s31

Trafikverket, Stockholm. Publ. 11 december 2019

*** 14555****Chart: 922, 9221****(not translated)**

56-01,619N	012-41,387E
56-00,922N	012-41,684E
56-01,031N	012-42,024E

Bsp Sydkusten 2012/s11, s12, s31, s32, s33



txtBeskrEng

Transportstyrelsen. Publ. 12 december 2019

NOTICES

Bay of Bothnia

* 14546

Chart: 4101

Sweden. Bay of Bothnia. Luleå. Sandöleden fairway. Regulations concerning meeting.

Meeting bans apply in the fairway from Klubbnäset's breakthrough, buoys 3 and 4 in the east, and through Svartösundet to buoys 27 and 30 in the west. Exceptions apply to tugboats, icebreakers and other work vessels.

The ban on meetings applies to vessels, with reporting obligations to the VTS area Luleå, with gross tonnage > 300 or LOA > 45 meters.

Exceptions apply to tugboats, icebreakers and other work vessels.

Insert	text 'See note 292' in position a) and b)	a)	65-30,3N	022-22,8E
		b)	65-33,1N	022-12,1E
Insert	Note 292			

Port of Luleå. Rules and regulations.

Bsp Bottenviken 2018/s58, s61, s71

Note 292**RESTRICTIONS IN SANDÖLEDEN**

Meeting bans apply in the fairway from Klubbnäset's breakthrough, buoys 3 and 4 in the east, and through Svartösundet to buoys 27 and 30 in the west.

The ban on meetings applies to vessels, with reporting obligations to the VTS area Luleå, with gross tonnage > 300 or LOA > 45 meters.

Exceptions apply to tugboats, icebreakers and other work vessels.

RESTRIKTIONER I SANDÖLEDEN

Mötesförbud gäller i farleden från Klubbnäsets genombrott, bojpar 3 och 4 i öster, t.o.m Svartösundet, bojpar 27 och 30 i väster.

Mötesförbudet gäller för fartyg, med rapporteringskyldighet till VTS område Luleå, med bruttodräktighet > 300 eller längd > 45 meter.

Undantag gäller för bogserbåtar, isbrytare och andra arbetsfartyg.

Note 292

Sjöfartsverket. Publ. 12 december 2019

*** 14553 (T)**

Chart: 4, 41, 415, 421

Sweden. Bay of Bothnia. E of Byske. Tåme. Firing exercises. December 16 - 17, 2019.

Position: Approx.	64-55N	021-30E	Tåme Firing practice area
-------------------	--------	---------	---------------------------

Firing exercises will be carried out at Tåme firing range during times listed below. During these times the charted danger area "R 58" is closed for navigation within stated distance from shore.

During firing a red balloon is shown from the observation towers. Further information on VHF channel 16, call Tåme skjutfält, or phone +46 921 348 405 alt. +46 921 349 100.

Date	Time	Range from shore
December 16 -17	0800 - 1600 LT	4,4 M

Not shown in ENC.

Bsp Bottenviken 2018/s06, s07, s37, s38, s39, s40, s41, s42, s44

Försvarmakten. Publ. 12 december 2019

Sea of Bothnia

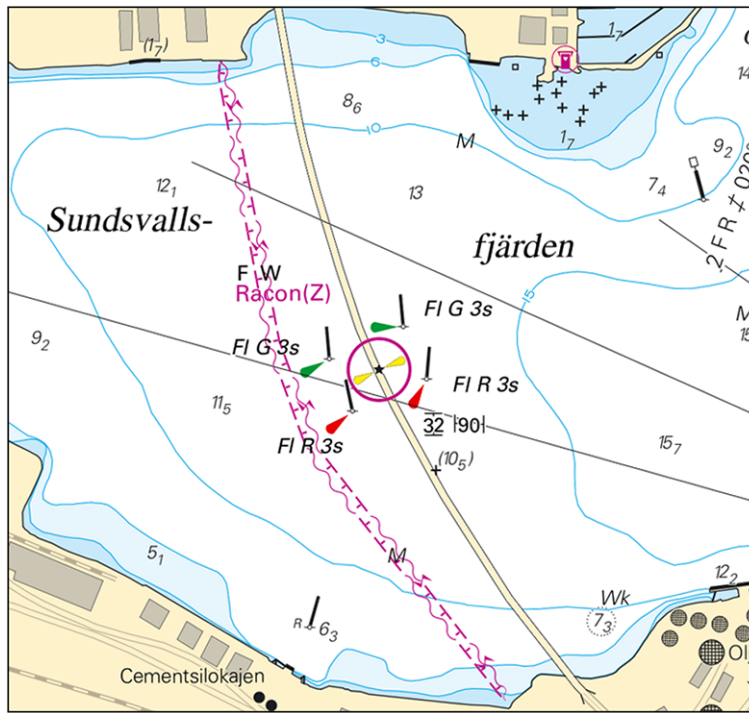
*** 14519**

Chart: 524

Sweden. Sea of Bothnia. Sundsvall. Sundsvallsfjärden. Bridge 'Sundsvallsbron'. Buoyage.

Replace	starboard hand lightbuoy with starboard hand light spar buoy	a)	62-23,330N	017-20,375E	FI G 3s
Replace	starboard hand lightbuoy with starboard hand light spar buoy	b)	62-23,358N	017-20,514E	FI G 3s
Replace	port hand lightbuoy with port hand light spar buoy	c)	62-23,284N	017-20,418E	FI R 3s
Replace	port hand lightbuoy with port hand light spar buoy	d)	62-23,312N	017-20,558E	FI R 3s

Bsp Bottenhavet N 2019/s48, Bsp Bottenhavet S 2019/s46



Bridge 'Sundsvallsbron'. Buoyage.

Sjöfartsverket. Publ. 12 december 2019

Sea of Åland and Archipelago Sea

14558

Chart:

Finland. Sea of Åland and Archipelago Sea. Mariehamn. Depths. Buoyage. Tracks.

1. Leading line, anchorage and buoyage.

Delete	lighted beacon, Möckelö nedre Iso G 2s	a)	60-06,503N	019-55,149E
Delete	lighted beacon, Möckelö rear LFI G 6s	b)	60-06,601N	019-55,116E
Delete	leading line between c) - d)	c)	60-06,601N	019-55,116E
		d)	60-06,247N	019-55,234E
Delete	anchorage	e)	60-05,41N	019-55,36E
Move	east cardinal spar bouy from 60-05,288N 019-55,448E to	f)	60-05,295N	019-55,402E
Move	east cardinal spar bouy from 60-05,347N 019-55,275E to	g)	60-05,346N	019-55,295E
Insert	east cardinal spar bouy	h)	60-06,120N	019-55,204E
Insert	east cardinal spar bouy	i)	60-06,404N	019-55,246E

2. Recommended tracks.

Insert	recommended track with maximum authorised draught 8,2 m between a) - b)	a)	60-04,981N	019-55,705E
Delete	former track	b)	60-05,782N	019-55,374E
Insert	recommended track with maximum authorised draught 7,3 m between c) - e)	c)	60-05,782N	019-55,374E
Delete	former track	d)	60-06,120N	019-55,235E
		e)	60-06,328N	019-55,283E

3. Swept area 9,2 m.

Insert	swept area 9,2 m limited by position a) - l)	a)	60-04,758N	019-55,486E
		b)	60-04,977N	019-55,530E
		c)	60-05,185N	019-55,515E
		d)	60-05,295N	019-55,401E
		e)	60-05,346N	019-55,294E
		f)	60-05,625N	019-55,391E
		g)	60-05,779N	019-55,329E
		h)	60-05,791N	019-55,500E
		i)	60-05,149N	019-55,820E
		j)	60-04,922N	019-55,927E
		k)	60-04,727N	019-55,723E
		l)	60-05,758N	019-55,486E

Insert	swept area 8,1 m limited by position a) - i)	a)	60-05,779N	019-55,329E
		b)	60-06,120N	019-55,202E
		c)	60-06,404N	019-55,244E
		d)	60-06,411N	019-55,323E
		e)	60-06,339N	019-55,405E
		f)	60-06,154N	019-55,355E
		g)	60-06,043N	019-55,300E
		h)	60-05,784N	019-55,407E
		i)	60-05,779N	019-55,329E

5. Swept area 5 m.

Insert	swept area 5 m limited by position a) - f)	a)	60-06,318N	019-55,429E
		b)	60-06,411N	019-55,323E
		c)	60-06,419N	019-55,407E
		d)	60-06,399N	019-55,448E
		e)	60-06,366N	019-55,436E
		f)	60-06,318N	019-55,429E

Swept area 7 m.

Insert	swept area 7 m limited by position a) - g)	a)	60-06,185N	019-55,364E
		b)	60-06,339N	019-55,405E
		c)	60-06,318N	019-55,429E
		d)	60-06,304N	019-55,434E
		e)	60-06,214N	019-55,404E
		f)	60-06,205N	019-55,396E
		g)	60-06,185N	019-55,364E

Swept area 6,1 m.

Insert	swept area 6,1 m limited by position a) - e)	a)	60-06,154N	019-55,355E
		b)	60-06,185N	019-55,364E
		c)	60-06,205N	019-55,396E
		d)	60-06,162N	019-55,384E
		e)	60-06,154N	019-55,355E

Swept area 7,7 m.

Insert	swept area 7,7 m limited by position a) - e)	a)	60-05,770N	019-55,510E
		b)	60-05,791N	019-55,500E
		c)	60-05,781N	019-55,560E
		d)	60-05,769N	019-55,566E
		e)	60-05,770N	019-55,510E

Swept area 8,1 m.

Insert	swept area 8,1 m limited by position a) - e)	a)	60-05,654N	019-55,568E
		b)	60-05,770N	019-55,510E
		c)	60-05,769N	019-55,566E
		d)	60-05,667N	019-55,614E
		e)	60-05,654N	019-55,568E

Swept area 8,4 m.

Insert	swept area 8,4 m limited by position a) - d)	a)	60-05,423N	019-55,683E
		b)	60-05,536N	019-55,627E
		c)	60-05,536N	019-55,692E
		d)	60-05,423N	019-55,683E

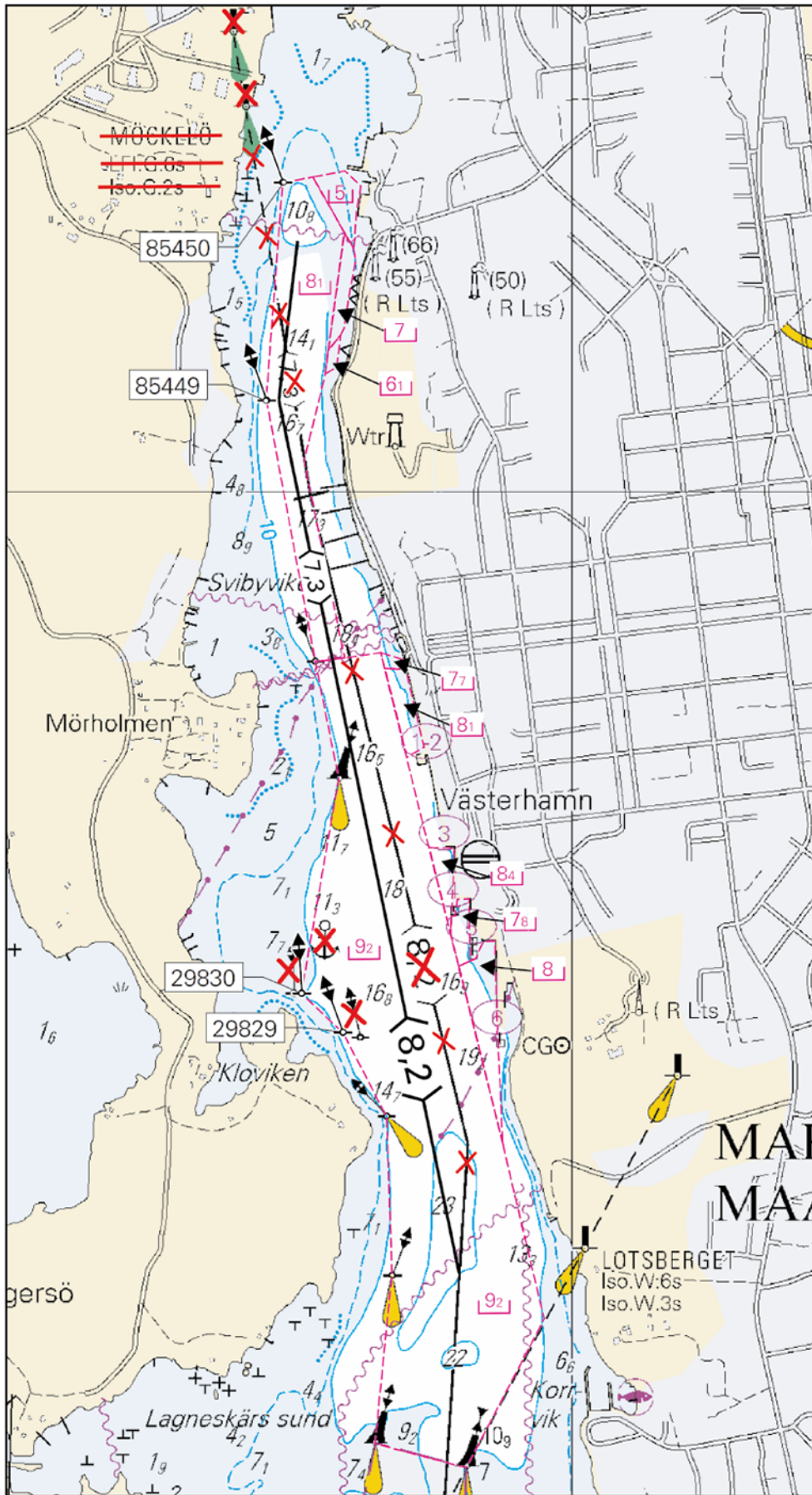
Swept area 7,8 m.

Insert	swept area 7,8 m limited by position a) - h)	a)	60-05,381N	019-55,704E
		b)	60-05,423N	019-55,683E
		c)	60-05,447N	019-55,685E
		d)	60-05,447N	019-55,695E
		e)	60-05,469N	019-55,701E
		f)	60-05,469N	019-55,730E
		g)	60-05,388N	019-55,735E
		h)	60-05,381N	019-55,704E

Swept area 8 m.

Insert	swept area 8 m limited by position a) - g)	a)	60-05,149N	019-55,820E
		b)	60-05,381N	019-55,704E
		c)	60-05,391N	019-55,748E
		d)	60-05,414N	019-55,768E
		e)	60-05,414N	019-55,799E
		f)	60-05,303N	019-55,804E
		g)	60-05,149N	019-55,820E

Bsp Stockholm N 2018/s56



Mariehamn

Northern Baltic

* 14479

Chart: 6143, 6144, 615

Sweden. Northern Baltic. Stockholm archipelago. Sandön. Buoyage.

Expired notices: 2019:766/14199(P)

Move	port hand light buoy 'Svarten' approx 30 meters SE to	a)	59-17,437N	018-53,554E
Move	port hand light buoy 'Hötterskär' approx. 25 meters NE to	b)	59-15,729N	018-55,099E
Delete	starboard hand spar buoy	c)	59-16,019N	018-55,590E
Insert	south cardinal spar buoy	d)	59-16,044N	018-55,626E
Delete	port hand spar buoy	e)	59-15,850N	018-57,184E
Insert	north cardinal spar buoy	f)	59-15,850N	018-57,184E
Move	port hand light buoy 'Kröken' approx. 30 meters N to	g)	59-16,163N	018-57,548E

Bsp Stockholm M 2018/s25, s31, s32, s52, Bsp Stockholm N 2018/s35, s41

Sjöfartsverket. Publ. 12 december 2019

* 14500

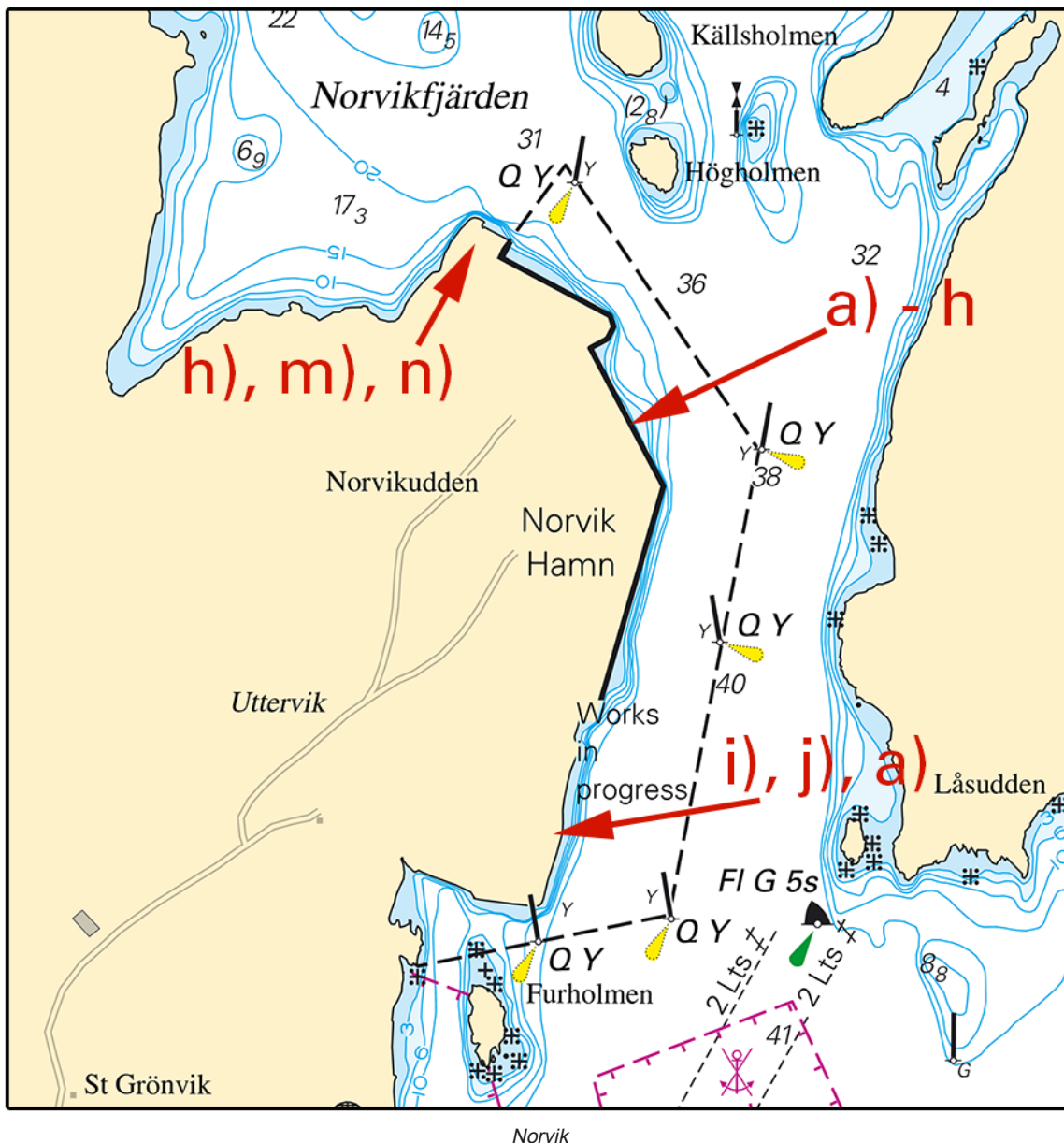
Chart: 616, 6162, 6171

Sweden. Northern Baltic. N of Nynäshamn. Norvikudden. Norvik Port. New port facility.

See: 2016:616/11515

Insert	quay between a) - h)	a)	58-56,010N	017-58,726E	
		b)	58-56,243N	017-58,855E	
		c)	58-56,378N	017-58,714E	
		d)	58-56,387N	017-58,746E	
		e)	58-56,401N	017-58,760E	
		f)	58-56,410N	017-58,751E	
		g)	58-56,467N	017-58,544E	
		h)	58-56,483N	017-58,561E	
Insert	land within i), j) , a)	i)	58-55,865N	017-58,367E	see chartlet
		j)	58-55,824N	017-58,624E	
Replace	land with water, depth 0-3 m	k)	58-56,068N	017-58,770E	see chartlet
Replace	land with water, depth 0-3 m	l)	58-56,452N	017-58,620E	see chartlet
Insert	land within h), m), n)	m)	58-56,508N	017-58,496E	see chartlet
		n)	58-56,455N	017-58,419E	

Bsp Stockholm S 2018/s20, s35



Stockholms hamnar. Publ. 12 december 2019

* 14559

Chart: 6144

Sweden. Northern Baltic. Stockholm archipelago. Sandön. Radar reflector.

Delete	radar reflector in position	59-16,59N	018-54,58E
--------	-----------------------------	-----------	------------

Bsp Stockholm M 2018/s31

Sjöfartsverket. Publ. 11 december 2019

Lake Mälaren and Södertälje Canal

* 14556

Chart: 111, 112

Sweden. Lake Mälaren and Södertälje Canal. Bålsta. Kalmarviken. Quay operational.

Expired notices: 2018:724/13489(T)

The quay is operational.

Quay	59-32,953N	017-32,304E
------	------------	-------------

Bsp Mälaren - Hjälmarén 2016/s25, s47

SG Gyproc Sverige. Publ. 7 december 2019

* 14562

Chart: 111, 112

Sweden. Lake Mälaren and Södertälje Canal. Kalmarviken. Bålsta. Buoyage.

Expired notices: 2019:770/14238

Delete	special light spar buoy FI Y 3s	a)	59-33,056N	017-32,343E
Delete	special light spar buoy FI Y 3s	b)	59-32,933N	017-32,421E

Bsp Mälaren - Hjälmarén 2016/s25, s47

Sjöfartsverket, Norrköping. Publ. 7 december 2019

* 14566 (T)

Chart: 111, 6141

Sweden. Lake Mälaren and Södertälje Canal. Lake Mälaren. Bridge 'Huvudstabron'. Fairway closed Dec 17, 2019.

Time: December 17 between 0700 - 1600 LT.

The fairway past bridge 'Huvudstabron' is closed for all vessel traffic during the above stated time.

Bridge 'Huvudstabron'	59-21,0N	017-58,4E
-----------------------	----------	-----------

Bsp Mälaren - Hjälmarén 2016/s49, s60

Sjöfartsverket. Publ. 12 december 2019

Southern Baltic

* 14380

Chart: 839

Sweden. Southern Baltic. Ystad. Buoyage.

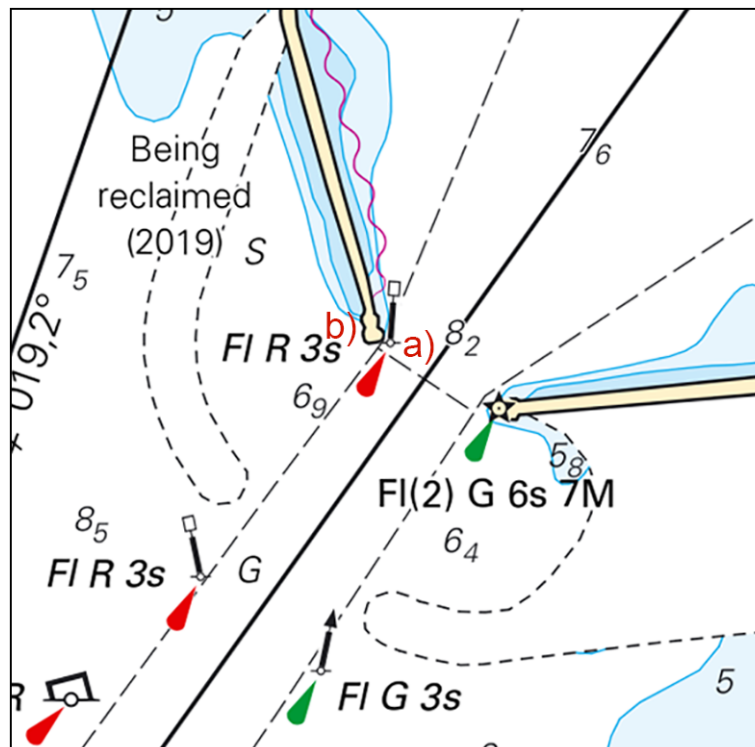
Expired notices: 2019:771/14240(P)

See: 2019:750/13919, 2019:750/13920(T)

Insert	port hand light spar buoy FI R 3s	a)	55-25,040N	013-49,011E
Delete	light FI R 3s 9M	b)	55-25,044N	013-48,996E

Adm. LoL. C2450-4

Bsp Sydkusten 2012/s27, s52



Ystad. Buoyage.

Per Aarsleff A/S. Publ. 12 december 2019

* 14563 (T)

Chart: 742, 7421

Sweden. Southern Baltic. Port of Karlshamn. Stilleryd västra. Stilleryd östra. Dredging. Bar sweeping.

See: 2019:784/14526

Time: December 11 - 20, 2019

Dredging and bar sweeping will be performed in the highlighted area as shown in the chartlet.

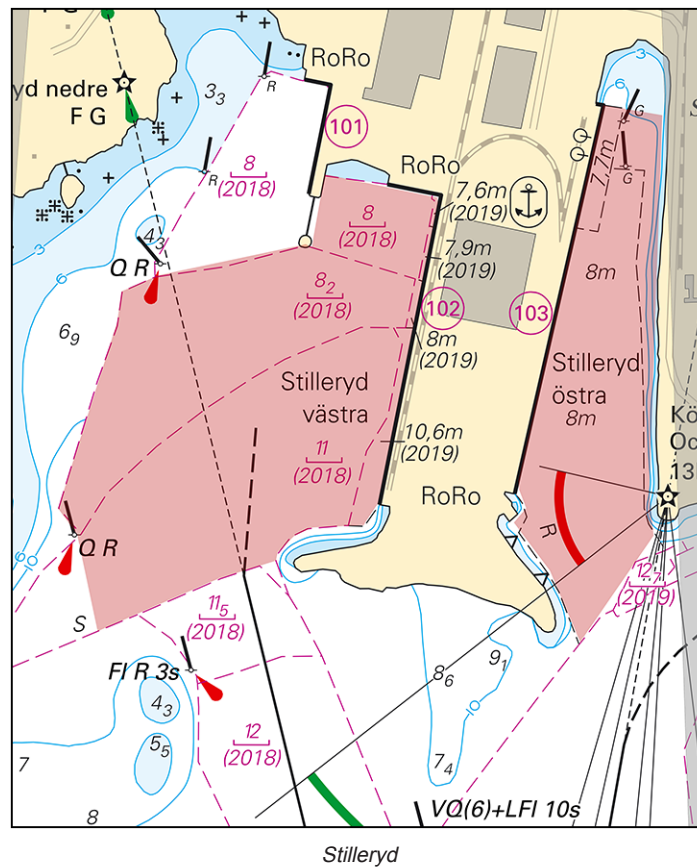
Dredger 'Elisabeth Hoej/OYRQ2/IMO 6922391' monitors VHF Ch 18.

Mariners are advised to proceed with caution.

Stilleryd västra	56-09,4N	014-49,0E
Stilleryd östra	56-09,4N	014-49,3E

Not shown in ENC.

Bsp Hanöbukten 2018/s20, s46



Karlshamns hamn. Publ. 12 december 2019

The Sound

* 14571

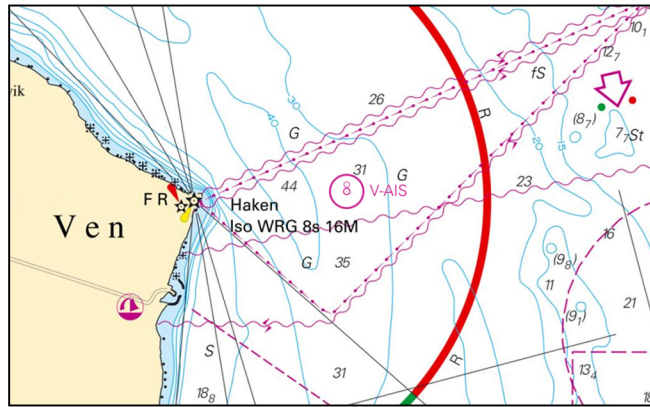
Chart: 74, 92, 922

Sweden. The Sound. The Sound. Ven. Landskrona. Safe Water Mark. Virtual AIS.

Insert	virtual AIS with safe water mark function	55-54,6N	012-44,5E
--------	---	----------	-----------

MMSI no: 992 651 006

Bsp Sydkusten 2012/s13, s31



Virtual AIS - Safe Water Mark

Sjöfartsverket. Publ. 12 december 2019

Lake Vänern and Trollhätte Canal

* 14243

Chart: 1331

Sweden. Lake Vänern and Trollhätte Canal. Dalbosjön. W of Källandsö. Svälholmen. Depth. Buoyage.

Move	north cardinal spar buoy approximately 100 meters east to	a)	58-39,472N	013-04,216E
Move	east cardinal spar buoy approximately 40 meters east to	b)	58-39,432N	013-04,212E
Insert	under water rock	c)	58-39,462N	013-04,221E

Bsp Göta kanal 2011/s40, s41, Bsp Vänern 2018/s44, s45

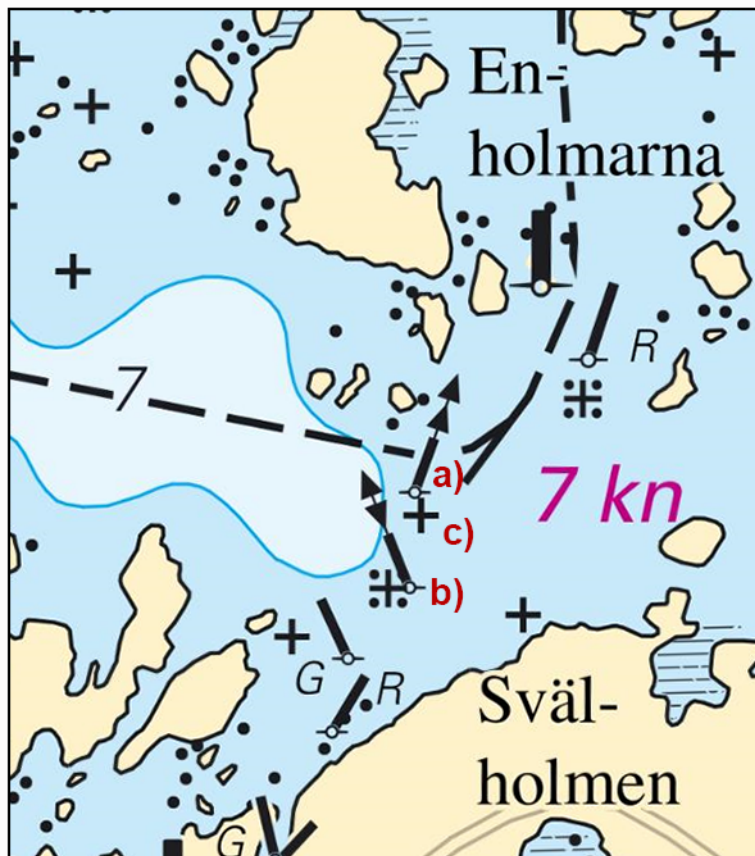


Chart amendments

Sjöfartsverket. Publ. 12 december 2019

* 14565

Chart: 13, 135

Sweden. Lake Vänern and Trollhätte Canal. Lake 'Vänern'. Vänersborgsviken. TSS Gälleudde. Buoyage.

Insert	light FI(2) W 5s on isolated danger mark in position	58-28,99N	012-29,89E
--------	--	-----------	------------

Bsp Göta kanal 2011/s34, s35, Bsp Vänern 2018/s08, s34, s35

Sjöfartsverket. Publ. 12 december 2019

* 14570

Chart: 132

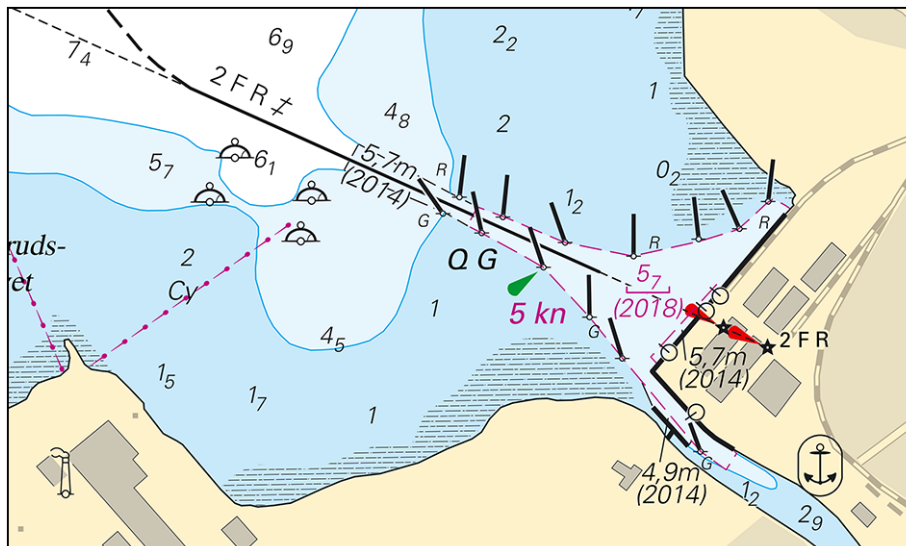
Sweden. Lake Vänern and Trollhätte Canal. Port of Kristinehamn. Depths.

Expired notices: 2019:783/14524

A hydrographic survey in Kristinehamn has shown other depths than charted. Important amendments are shown in the table below, and will be published in the next print of affected chart. The changes are available as an ENC update.

Delete	depths 5,1 m, 5,6 m and 4,9 m	a)	59-18,9N	014-05,3E
Delete	text '7t', '24t' and '40t'	b)	59-18,9N	014-05,5E
Insert	depth 5.7 m	c)	59-19,044N	014-04,402E
Insert	dredged area 5,7 m (2014)	d)	59-19,035N	014-04,785E
Insert	swept area 5,7 m (2018)	e)	59-18,929N	014-05,232E
Insert	dredged area 5,7 m (2014)	f)	59-18,866N	014-05,359E
Insert	dredged area 4,9 m (2014)	g)	59-18,769N	014-05,279E

Bsp Vänern 2018/s14, s15, s47



Port of Kristinehamn

Sjöfartsverket. Publ. 12 december 2019