

Notices to Mariners, SWEDEN Swedish Maritime Administration



Areas in Swedish Notices to Mariners



SJÖFARTSVERKET

Editorial office
Swedish Maritime Administration
Ufs
601 78 NORRKÖPING
Sweden
tel: 0771 630 605
e-mail: ufs@sjofartsverket.se
Publisher:
Hydrographer Patrik Wiberg

ANNOUNCEMENTS

No Announcements in this booklet.

NOTICES

Sea of Bothnia

* 14402 (T)

Chart: 524

Sweden. Sea of Bothnia. N of Sundsvall. Timrå. Östrand. Obstruction.

Time: Until further notice

A submarine pipeline has come loose from the seabed in two positions creating obstructions.

Obstruction depth 1,9 m	a)	62-28,668N	017-20,447E
Obstruction depth 4,3 m	b)	62-28,698N	017-20,471E

Not shown in ENC.

Bsp Bottenhavet N 2019/s08, s49, Bsp Bottenhavet S 2019/s08, s45

Sjöfartsverket. Publ. 16 oktober 2019

Northern Baltic

* 14336

Chart: 616, 6171

Sweden. Northern Baltic. Nynäshamn. Light 'Trehörningen'. Correction of position.

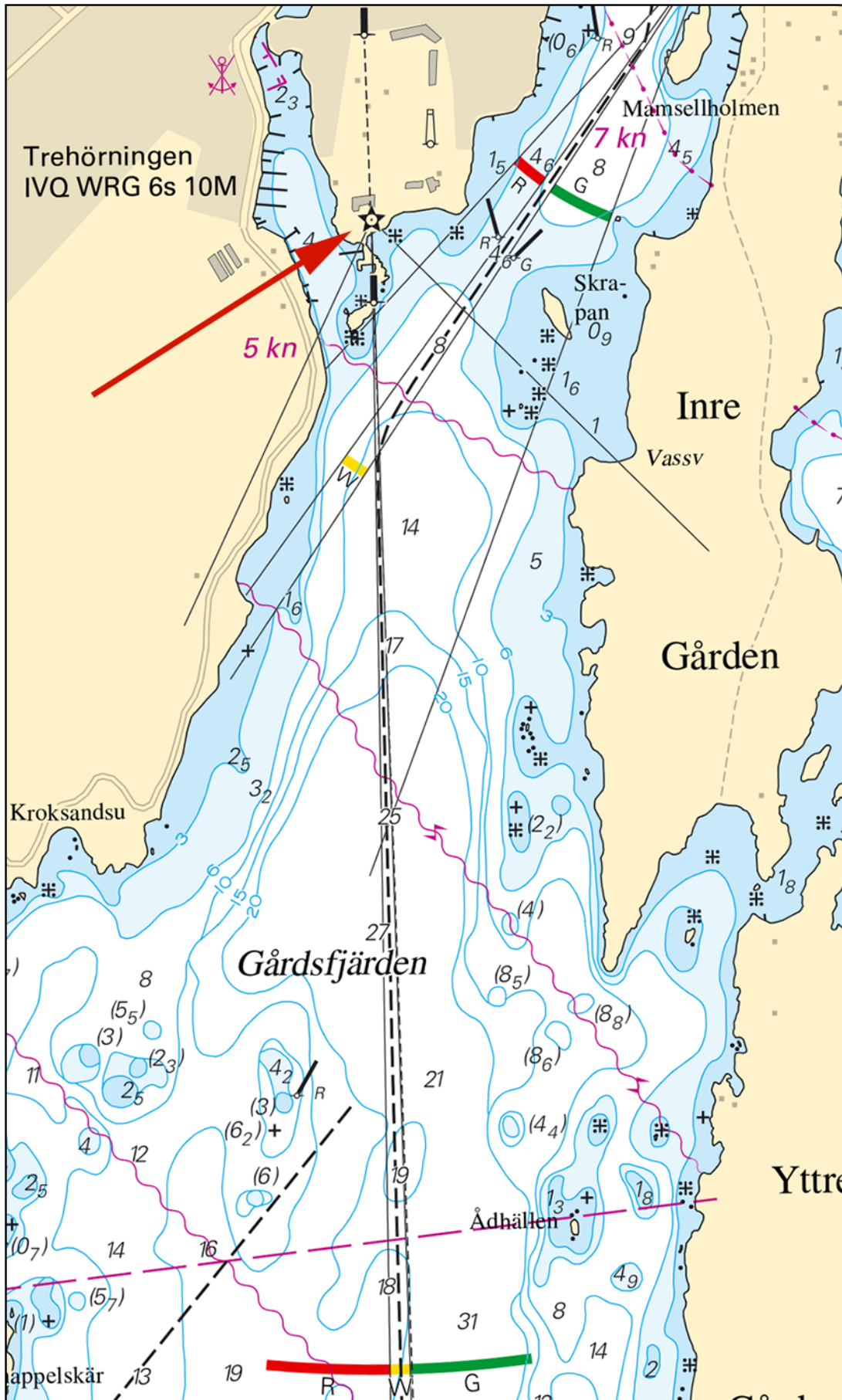
Adjust position to light 'Trehörningen' in affected nautical charts.

Move	light 'Trehörningen' approx. 35 m westward to	58-53,455N	017-56,805E
-------------	---	------------	-------------

Bearing (from sea towards light)	Colour
315,0 - 357,7	G
357,7 - 359,2	W
359,2 - 025,0	R
025,0 - 315,0	Dk

Adm LoL Vol C: 6602

Bsp Stockholm S 2018/s21, s22, s23, s24, s26, s27, s35



Light 'Trehörningen'

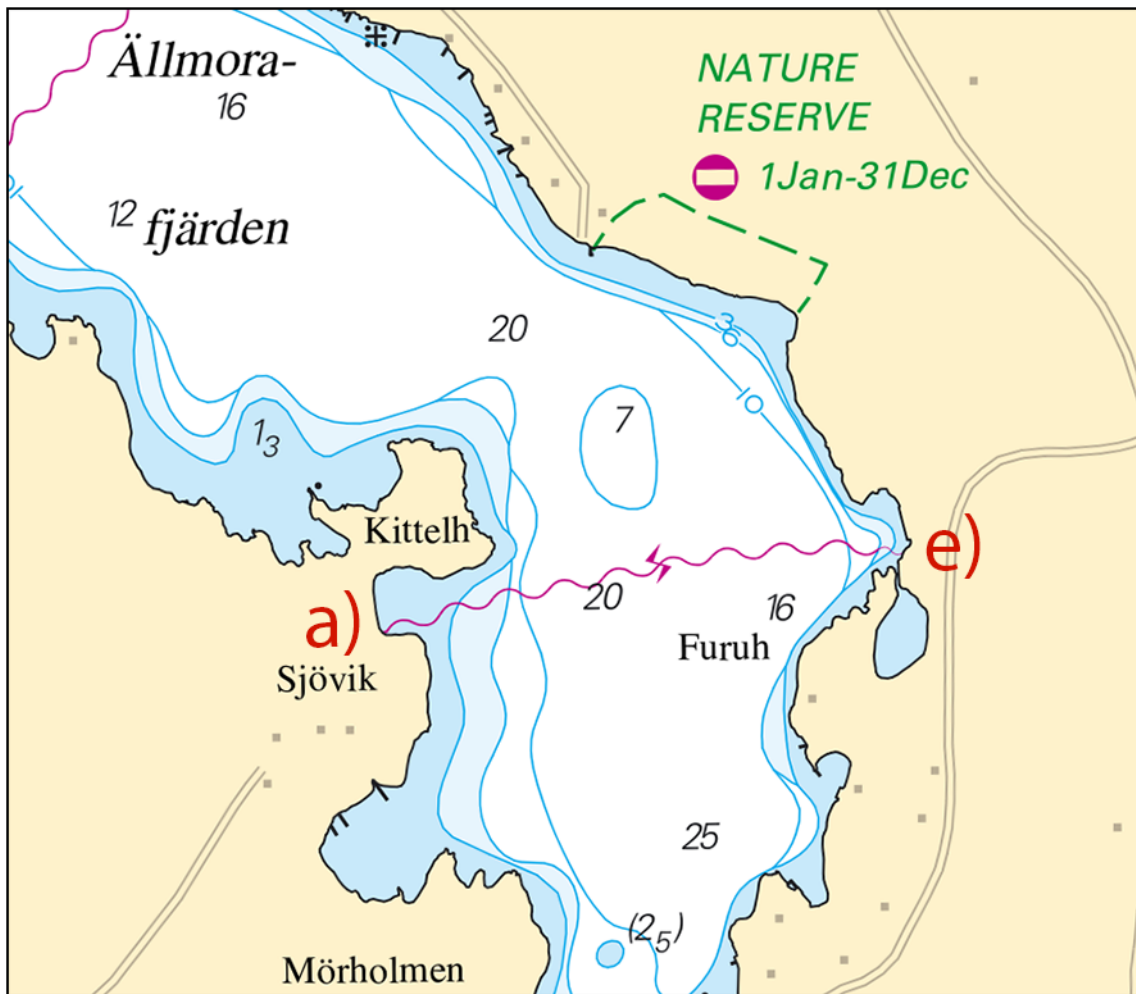
* 14392

Chart: 6145

Sweden. Northern Baltic. Stockholms skärgård. Dyviksudd. Ällmorafjärden. Submarine power cable.

Insert	submarine power cable between a) - e)	a)	59-11,540N	018-23,491E
		b)	59-11,565N	018-23,647E
		c)	59-11,594N	018-23,951E
		d)	59-11,602N	018-24,149E
		e)	59-11,597N	018-24,239E

Bsp Stockholm M 2018/s34



Submarine power cable. Ällmorafjärden

SUAB. Publ. 17 oktober 2019

* 14425 (T)

Chart: 6181

Sweden. Northern Baltic. Södertälje. Strömsviken. Submarine pipeline work.

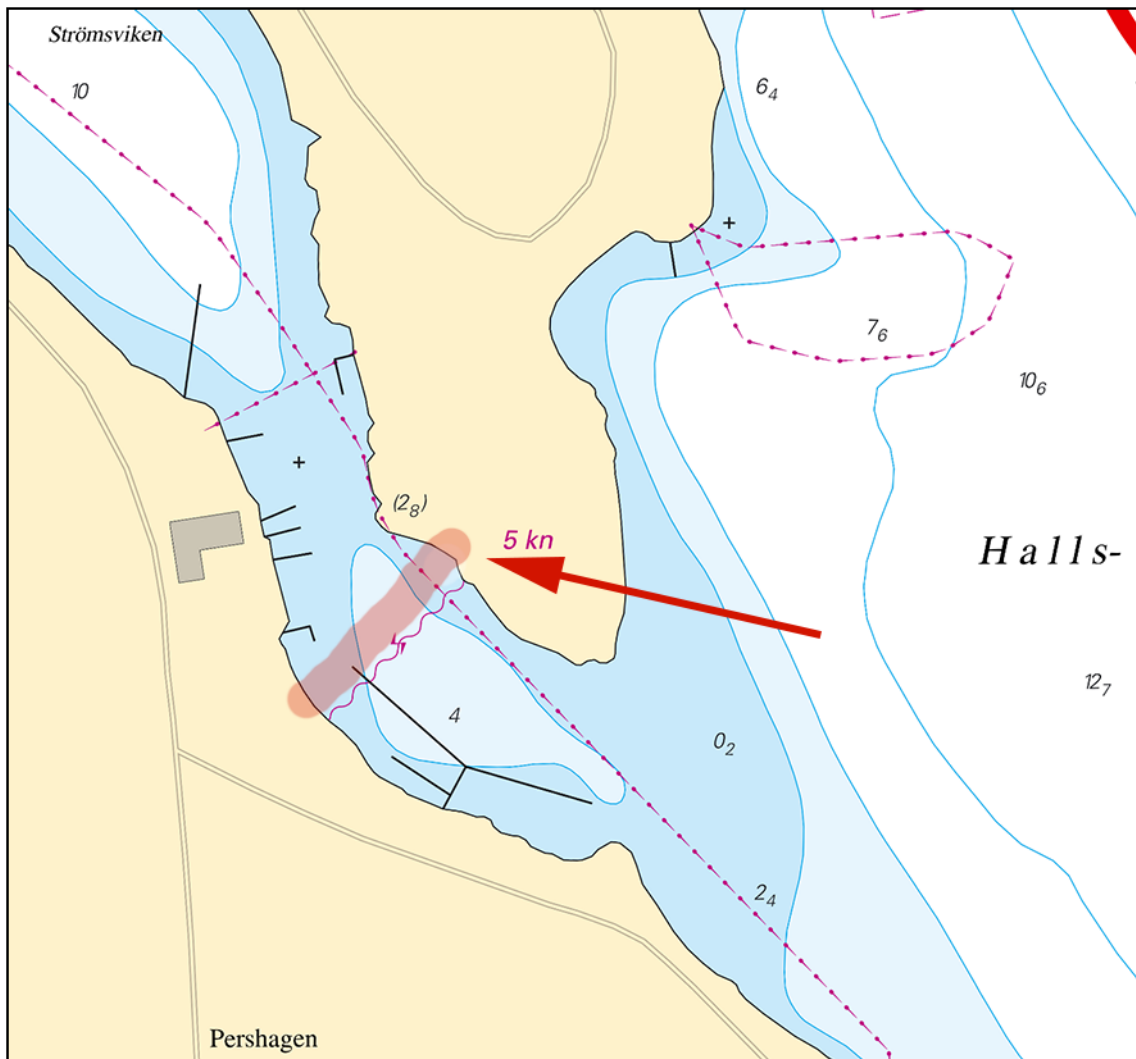
Time: October 28 - November 10

Pipeline laying work take place stated time in Strömsviken.

59-09,40N	017-39,51E	Work area
-----------	------------	-----------

Not shown in ENC.

Bsp Mälaren - Hjälaren 2016/s31



Pipeline work. Strömsviken

Södertälje kommun. Publ. 17 oktober 2019

Central Baltic

14410 (T)

Chart: 7, 71

Sweden. Central Baltic, South-Eastern Baltic. S of Karlskrona. Pipelaying works. 'SOLITAIRE'. Nord Stream 2.

Time: October 2019. Note that the dates are preliminary and may be changed.

The construction of a new gas pipeline is proceeding in the waters south of Karlskrona . The pipelaying operation moves in a south westerly direction towards Bornholm and further towards Germany.

The work is carried out by pipelaying vessel 'SOLITAIRE/9HA4114'.

Transport of pipes from Mukran, Germany to pipelaying vessel will be carried out by 'SYMPHONY PROVIDER/MCES9', 'STANDARD PRINCESS/MAQY2', 'FELICITY/LNMG3', 'ALEGRIA/LAFU8', 'FAR SOLITAIRE/LDYF' and 'HAVILA FORTRESS/C6NX9'.

Due to restricted manoeuvrability of pipelaying vessel, a minimum CPA of 1 NM is requested.

S of DW-route (KP 950)	55-40,2N	016-29,4E
endpoint swedish EEZ	55-32,0N	015-44,5E

Not shown in ENC.

Nord Stream 2. Publ. 15 oktober 2019

* 14411 (T)

Chart: 71

Sweden. Central Baltic. E of Öland. SE of Kårehamn. Oil recovery from wreck.

Expired notices: 2019:775/14384(T)

Time: October 15 - November 1, 2019.

During the period oil recovery from wreck will be in progress by vessel 'Vina/OVJJ2'. Vessel will be anchored with 6 anchor 500 - 800 meters from vessel position. Anchors are marked with light buoys equipped with radar reflectors.

Vessel can be contacted on VHF Ch 16 or telephone: +45 246 16 611.

Minimum CPA of 0,5 nm.

Wreck	56-48,308N	017-12,282E
-------	------------	-------------

Bsp Kalmarsund 2014/s07

JD-Contractors A/S. Publ. 15 oktober 2019

* 14417

Chart: 712

Sweden. Central Baltic. Kalmarsund. Krongrundet. Buoyage.

Replace	starboard hand light spar buoy with starboard hand lightbuoy	56-41,286N	016-24,193E
---------	--	------------	-------------

Bsp Kalmarsund 2014/s34

Sjöfartsverket. Publ. 17 oktober 2019

* 14427

Chart: 623, 6231

Sweden. Central Baltic. Västervik. Amended depths.

A bar sweep survey of the fairway to Västervik has revealed other depths than previously charted.

Important amendments are presented in the table below, and will be published in the next print of the affected charts.

The changes are available as an ENC update.

Replace	depth 11,6 m with	underwater rock depth 11,4 m cleared by bar sweeping	a)	57-44,835N	016-47,619E
Amend	underwater rock depth 10 m cleared by bar sweeping to	underwater rock depth 9,9 m cleared by bar sweeping	b)	57-44,215N	016-44,178E
Insert	underwater rock depth 9,9 m cleared by bar sweeping		c)	57-44,222N	016-44,160E
Insert	underwater rock depth 9,9 m cleared by bar sweeping		d)	57-44,055N	016-44,068E
Delete	10 m depth contour		e)	57-43,803N	016-43,740E
Insert	underwater rock depth 9,9 m cleared by bar sweeping		f)	57-43,802N	016-43,787E
Amend	underwater rock depth 10 m cleared by bar sweeping to	underwater rock depth 9,9 m cleared by bar sweeping	g)	57-43,759N	016-42,972E
Insert	underwater rock depth 9,9 m cleared by bar sweeping		h)	57-43,880N	016-41,660E

Bsp Kalmarsund 2014/s30, s32, Bsp Ostkusten 2019/s53, s54, s56

Sjöfartsverket, Norrköping Publ. 17 oktober 2019

Southern Baltic

* 14369 (T)

Chart: 74, 83, 839

Sweden. Southern Baltic. E of Ystad. Kabusa. Firing exercises. October 28 - 31.

Position: Approx.	55-23N	013-57E	Firing restricted area R55A KABUSA
-------------------	--------	---------	------------------------------------

Restricted area R55A will be closed for vessels during stated times.

For further information call "Kabusa skjutfält" on VHF Ch 16 or call +46 411-55 06 52/+46 10 829 2805.

Date	Hours	Range
October 28	1200 - 1600 LT	2.7 M
October 29 - 30	0900 - 2000 LT	2.7 M
October 31	0900 - 1600 LT	2.7 M

Not shown in ENC.

Bsp Sydkusten 2012/s06, s27, s28

Försvarmakten, Södra Skånska Regementet, Södra Sandby. Publ. 17 oktober 2019

*** 14404****Chart: 7411, 7413****Sweden. Southern Baltic. Karlskrona. Verköhamnen. Buoyage.**

Insert	south cardinal spar buoy	56-10,176N	015-37,985E
--------	--------------------------	------------	-------------

Bsp Hanöbukten 2018/s40, s42

NKT. Publ. 17 oktober 2019

*** 14409 (T)****Chart: 71, 74, 741, 7411, 83****Sweden. Southern Baltic. Karlskrona. W of Utklippan. Blast warning. October 14 - 24, 2019.**

Time: October 14 - 24, 2019, 0800 - 1900 LT daily.

Swedish armed forces conducting underwater blastings. Safe distance 500 m.

Contact: VHF CH 16 or telephone: +46 10 823 1823.

Excercise area R63E	a)	56-00,00N	015-33,00E
	b)	56-00,00N	015-37,00E
	c)	55-57,58N	015-37,00E
	d)	55-57,58N	015-33,00E

Not shown in ENC

Bsp Hanöbukten 2018/s05, s06, s39

Försvarmakten. Publ. 17 oktober 2019

Kattegat*** 14419 (T)****Chart: 92, 923, 924****Sweden. Kattegat. W of Halmstad. Ringenäs. Firing exercise. October 23 - 24.**

Position: Approx.	56-40,8N	012-38,6E	Firing restriction area R41 A RINGENÄS
-------------------	----------	-----------	--

Firing will take place at R41A Ringenäs firing range during stated times. The dangerous area extends from the shore according to table below. A light on shore, VQ R, will be shown during firing.

For further information call +46 35 266 39 55, +46 35 536 77.

Date	Time	Range
October 23	0900 - 1500 LT	3.8 M
October 24	1230 - 1600 LT	1.7 M

Not shown in ENC.

Bsp Västkusten S 2019/s29, s30

Försvarmakten, Lv6. Publ. 16 oktober 2019

*** 14423****Chart: 924, 925****Sweden. Kattegat. Varberg. Amended depths.**

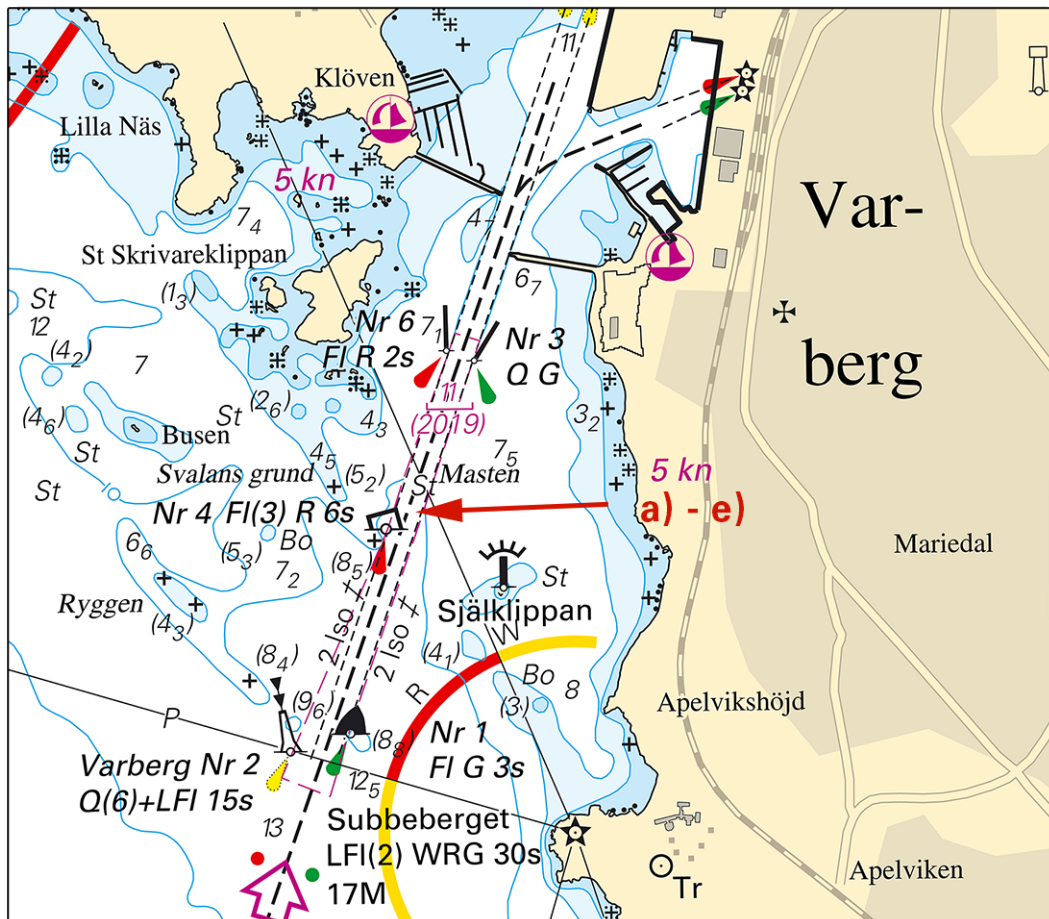
A bar sweep survey of an area in Varberg has shown other depths than previously charted.

Important amendments are presented in the table below, and the full survey will be published in the next print of the affected charts.

The changes are available as an ENC update.

Insert	bar swept area 11 m (2019) within a) - e)	a)	57-05,408N	012-13,104E
		b)	57-05,925N	012-13,518E
		c)	57-06,321N	012-13,776E
		d)	57-06,306N	012-13,869E
		e)	57-05,369N	012-13,284E

Bsp Västkusten S 2019/s24, s25, s62



Varberg

Sjöfartsverket, Norrköping. Publ. 17 oktober 2019

Skagerrak

* 14374

Chart: 937

Sweden. Skagerrak. N of Strömstad. Kungsviks hamn. Submarine power cable.

Insert	submarine power cable a) - b)	a)	58-59,781N	011-07,590E
		b)	58-59,750N	011-07,698E

Bsp Västkusten N 2019/s06



Kungsvikshamn

Markbygg. Publ. 17 oktober 2019

* 14408 (T)

Chart: 937

Sweden. Skagerrak. Kosterfjorden. Buoy temporarily withdrawn.

Expired notices: 2019:739/13710

Time: Until further notice

Special light buoy temporarily withdrawn.

Special light buoy	58-52,983N	011-05,894E
--------------------	------------	-------------

Not shown in ENC.

Bsp Västkusten N 2019/s09

SMHI. Publ. 17 oktober 2019