

Notices to Mariners, SWEDEN Swedish Maritime Administration



Areas in Swedish Notices to Mariners



SJÖFARTSVERKET

Editorial office
Swedish Maritime Administration
Ufs
601 78 NORRKÖPING
Sweden
tel: 0771 630 605
e-mail: ufs@sjofartsverket.se
Publisher:
Hydrographer Patrik Wiberg

ANNOUNCEMENTS

No Announcements in this booklet.

NOTICES

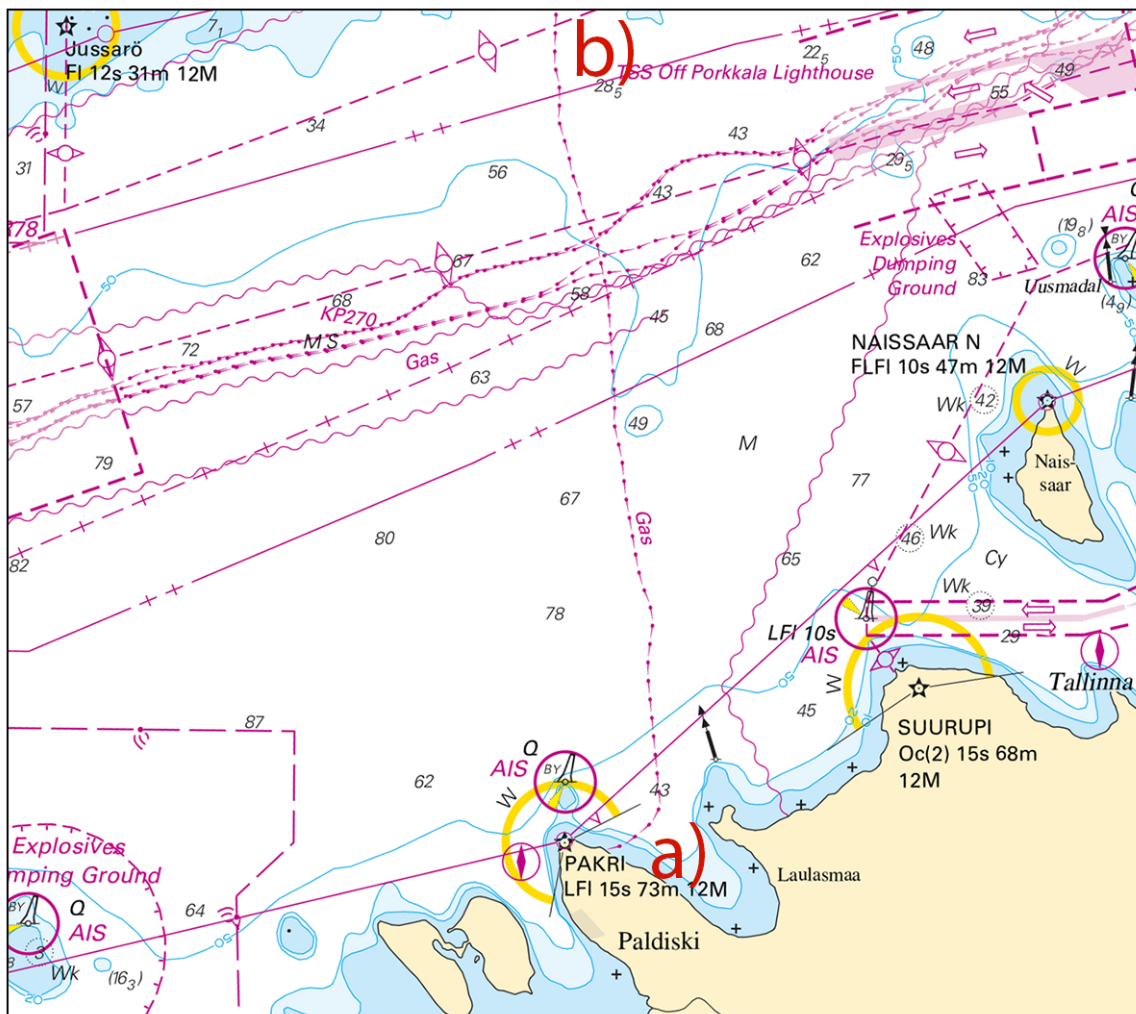
Gulf of Finland

14393

Chart: 6

Estonia, Finland. Gulf of Finland. Paldiski, Estonia - Finland. Gas pipeline.

Insert	gas pipeline as shown in chartlet, a) - b)	a)	59-23,1N	024-04,8E	Paldiski
		b)	59-48,0N	024-01,7E	Map frame



Gas pipeline

Finnish NtM 2019: 26/211. Publ. 3 oktober 2019

Northern Baltic

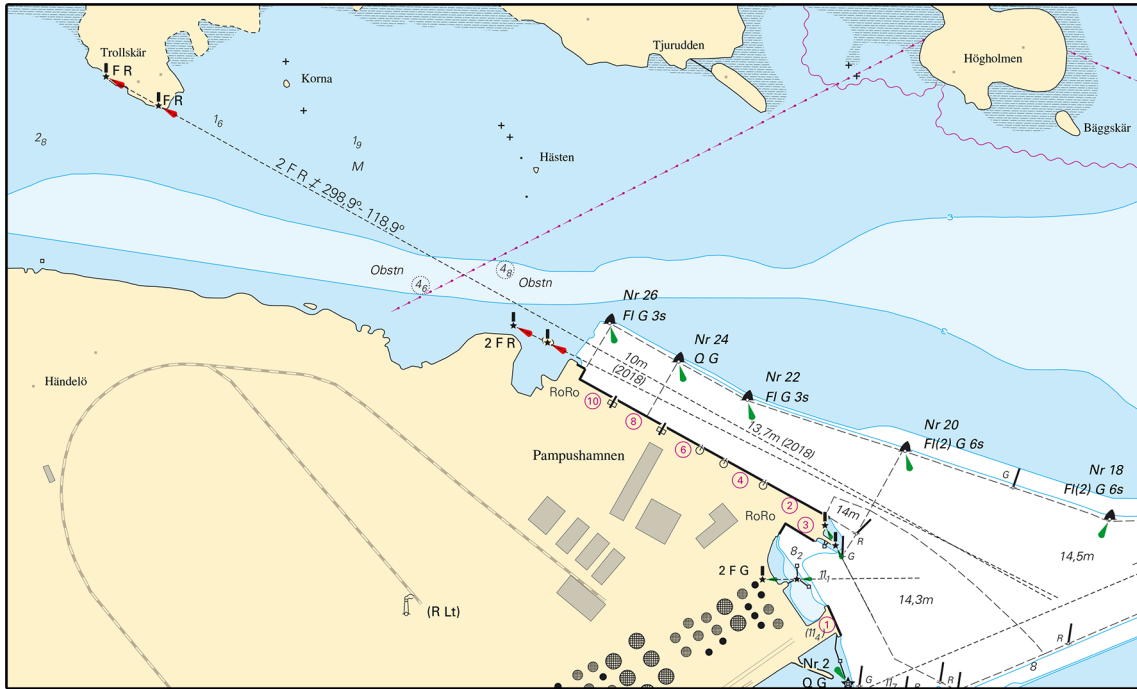
* 14194

Chart: 6212

Sweden. Northern Baltic. Norrköping. Pampusshannen. New leading lights. New leading line.

Insert	leading light F R	a)	58-37,757N	016-13,506E
Insert	leading light F R	b)	58-37,791N	016-13,389E
Insert	leading line between a) and c)	c)	58-37,191N	016-15,469E

Bsp Ostkusten 2019/s26, s58, s59



Pampushammen, Norrköping

Sjöfartsverket, Norrköping. Publ. 3 oktober 2019

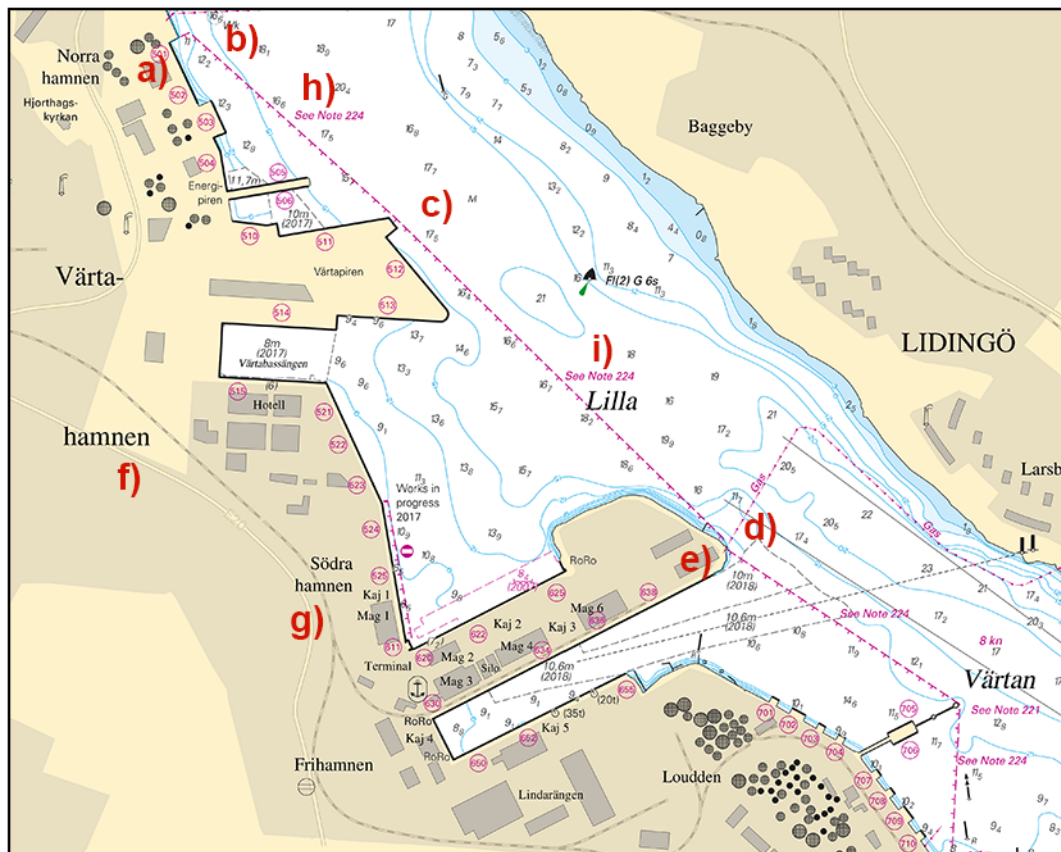
* 14313

Chart: 6141, 6142

Sweden. Northern Baltic. Stockholm. Värtahamnen. Restricted area.

Insert	limit of restricted area between a) and e)	a)	59-21,402N	018-06,472E
		b)	59-21,415N	018-06,524E
		c)	59-21,177N	018-07,045E
		d)	59-20,762N	018-07,884E
		e)	59-20,755N	018-07,884E
Delete	text 'See Note 224'	f)	59-20,85N	018-06,30E
Delete	text 'See Note 224'	g)	59-20,67N	018-06,89E
Insert	text 'See Note 224'	h)	59-21,30N	018-06,84E
Insert	text 'See Note 224'	i)	59-20,97N	018-07,44E

Bsp Mälaren - Hjälaren 2016/s52, s53, Bsp Stockholm M 2018/s06, s07, s09, s10



Restricted area. Värta hamnen in Stockholm

Stockholms hamnar. Publ. 3 oktober 2019

* 14387

Chart: 6141, 6142

Sweden. Northern Baltic. Stockholm. Djurgården. Djurgårdsbrunnsviken. Bridge established.

Expired notices: 2019:756/13843(P)

Bridge 'Folke Bernadottes bro' has been established between the positions given below.

Insert	northern end of bridge	59-19,856N	018-07,167E
	southern end of bridge	59-19,819N	018-07,179E

Bsp Mälaren - Hjälaren 2016/s52, s53, Bsp Stockholm M 2018/s06, s07, s10

Kungliga Djurgårdens Förvaltning. Publ. 2 oktober 2019

* 14391 (P)

Chart: 6142

Sweden. Northern Baltic. Stockholm. Halvkakssundet. Lidingö. Nacka. Cable works.

Tentative schedule October 18 - 28, 2019

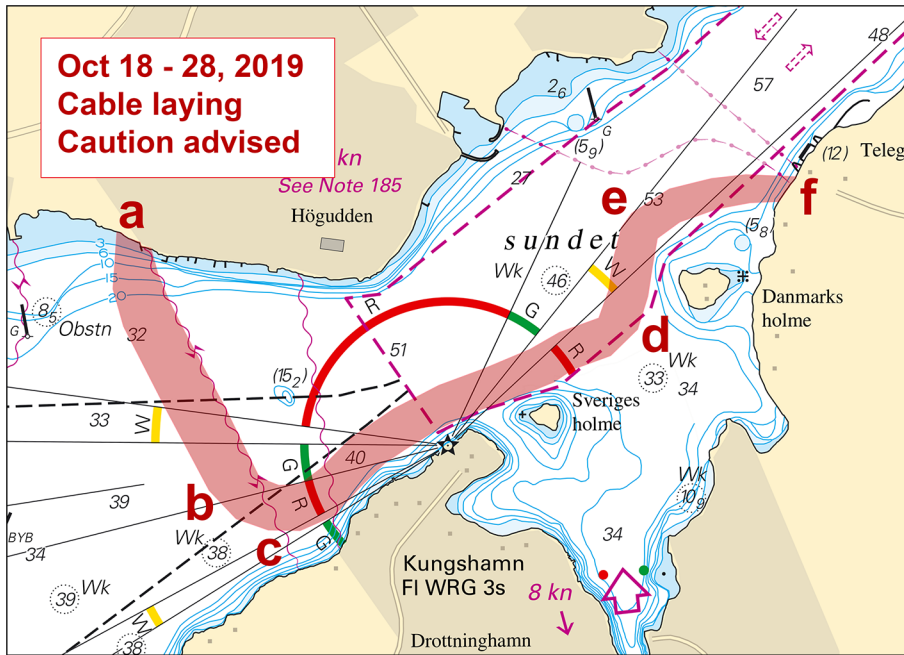
Cable laying in progress by 'Pleijel/SMWY' along the below route. Work involves surveys done by ROVs as well as by divers.

Mariners should maintain a safe distance and to pass with reduced speed - paying particular attention when diving signals are shown.

landing point Lidingö	a)	59-20,374N	018-11,661E
	b)	59-20,009N	018-11,960E
	c)	59-19,995N	018-12,164E
	d)	59-20,231N	018-13,001E
	e)	59-20,392N	018-13,107E
landing point Nacka	f)	59-20,440N	018-13,508E

Not shown in ENC.

Bsp Stockholm M 2018/s11



Cable laying Lidingö - Nacka

Baltic Offshore Kalmar AB. Publ. 3 oktober 2019

* 14395 (T)

Chart: 61, 616, 6162, 6163, 62

Sweden. Northern Baltic. E of Utö. Firing exercises. October 10 - 13.

Expired notices: 14331(T)

Firing exercises will be carried out within Utö firing range during stated times. The current extension of the closed area is given in the table.

Signal ammunition is used during hours of darkness.

Information during practice times VHF channel 16, call Utö skjutfält, or phone +46 8 501 570 45. Information about upcoming practice times, phone: +46 10 823 18 23, Muskö Sjöcentral.

Date	Time	Range from shore
October 10 - October 12	0900 - 1800 LT	2.3 M
October 13	0900 - 2100 LT	2.3 M

Position: Approx.	58-54N	018-20E	Utö Firing practice area
-------------------	--------	---------	--------------------------

Not shown in ENC.

Bsp Stockholm S 2018/s17, s18, s19, s37

Försvarmakten. Publ. 3 oktober 2019

Lake Mälaren and Södertälje Canal

* 11859

Chart: 111, 113, 1131, 1133

Sweden. Lake Mälaren and Södertälje Canal. Mälaren. Amendments of depths.

A hydrographic survey in Mälaren has shown other depths than charted.

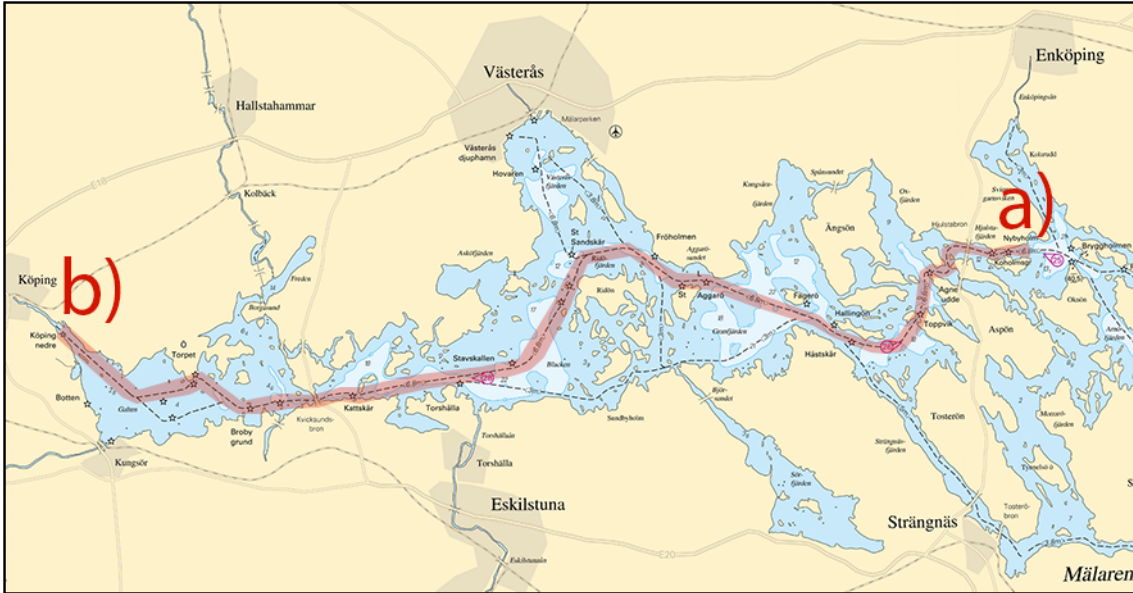
Important amendments are presented in the table below, and will be published in the next print of affected charts.

The changes are available as an ENC update.

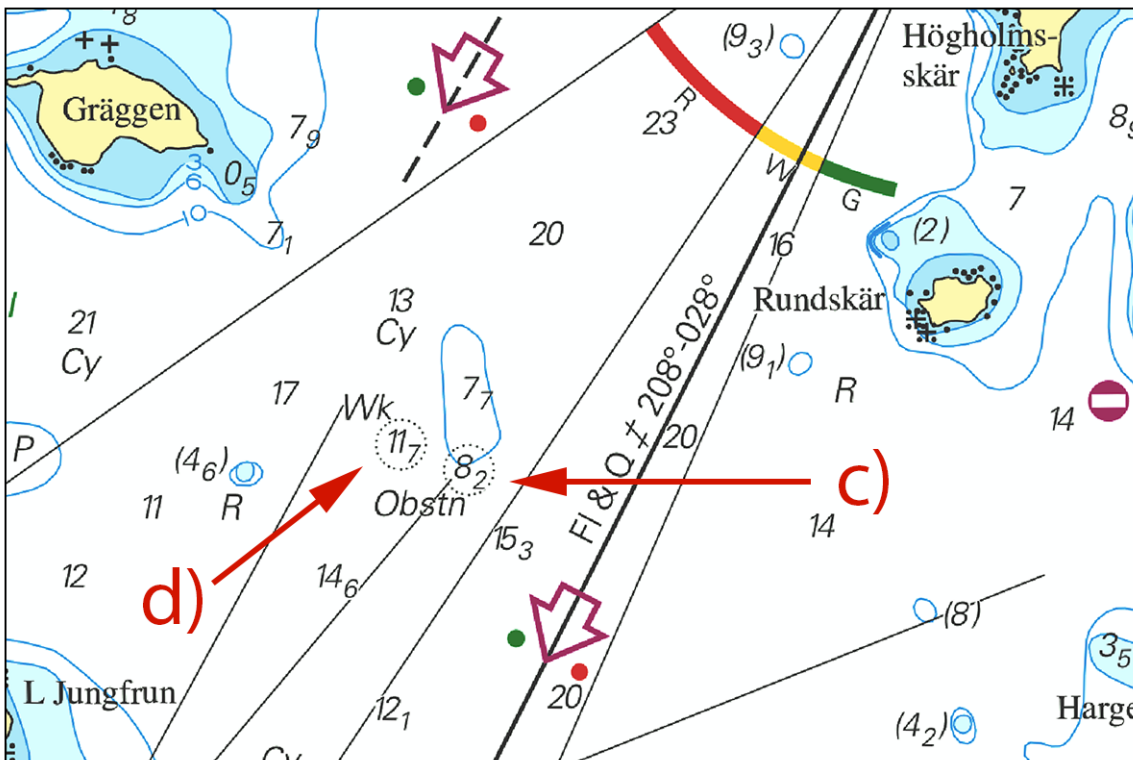
Survey area a) - b)	a)	59-31,7N	017-04,7E
	b)	59-29,5N	016-02,8E

Insert	obstruction 8,2 m	c)	59-29,132N	016-33,009E
Insert	wreck 11,7 m	d)	59-29,177N	016-32,785E
Insert	obstruction 2,5 m	e)	59-27,748N	016-11,984E
Insert	depth 3,1 m	f)	59-29,156N	016-03,548E
Insert	depth 3,4 m	g)	59-29,242N	016-03,375E

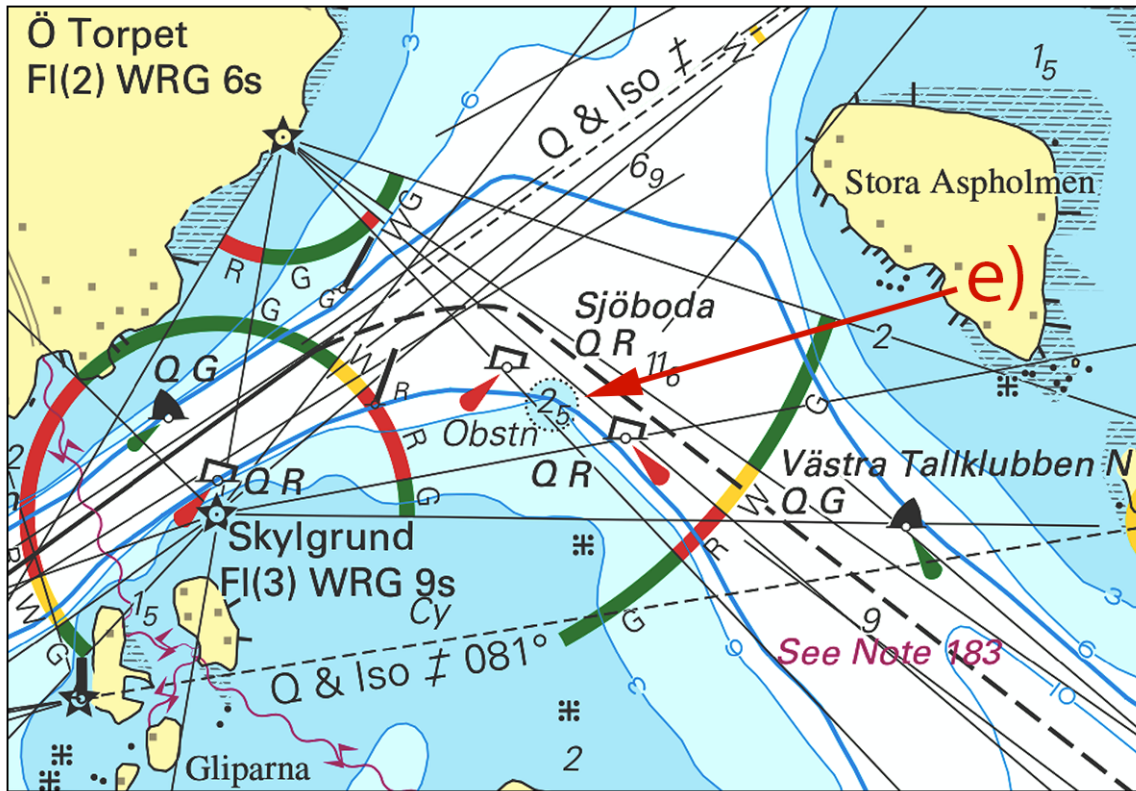
Bsp Mälaren - Hjälmaren 2016/s16, s17, s18, s19, s20, s21, s22, s23, s26, s56, s57, s61, s62, s63



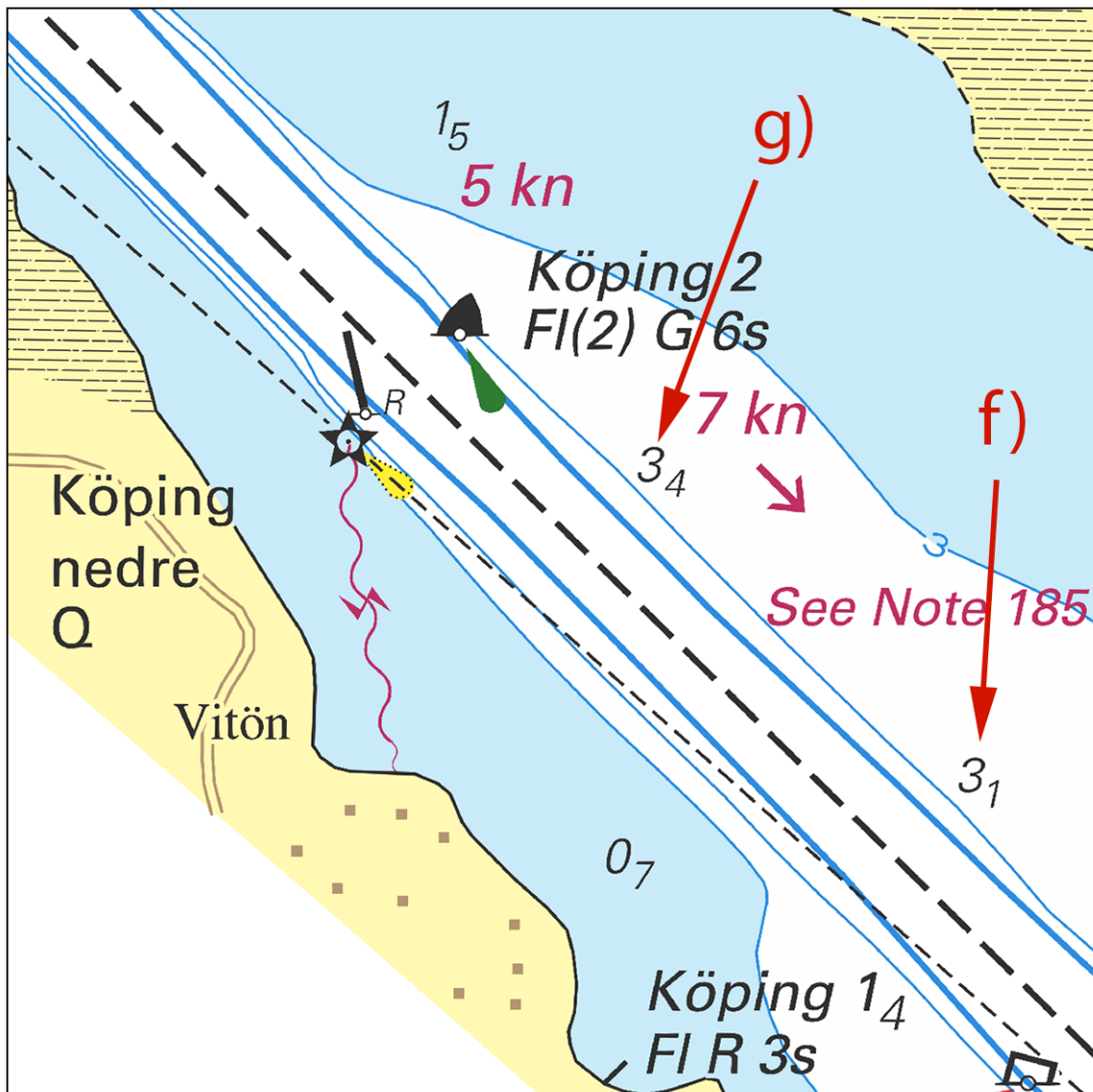
Mälarenleden



Obstruction and wreck



Obstruction



Depths

Sjöfartsverket. Publ. 3 oktober 2019

*** 14248 (T)**

Chart: 112

Sweden. Lake Mälaren and Södertälje Canal. Lake Mälaren. River 'Fyrisån'. Rowing contest 'Head of the Fyris'.

Time: October 19, 2019 between 1200 and 1400 LT.

River 'Fyrisån' is closed between the below positions during the rowing competition 'Head of the Fyris'.

Starting line	59-47,219N	017-39,642E	Near 'Flottsundsbron' bridge
Finish line	59-48,912N	017-40,235E	At Ultuna

Not shown in ENC.

Bsp Mälaren - Hjälmarén 2016/s44

UARS. Publ. 28 september 2019

*** 14342 (T)**

Chart: 111

Sweden. Lake Mälaren and Södertälje Canal. Stockholm. Lovön - Hässelby. Closed fairway. October 15 - 16, 2019.

See: 2019:771/14295(T)

Time: October 15, 0600 LT - October 16, 1800 LT.

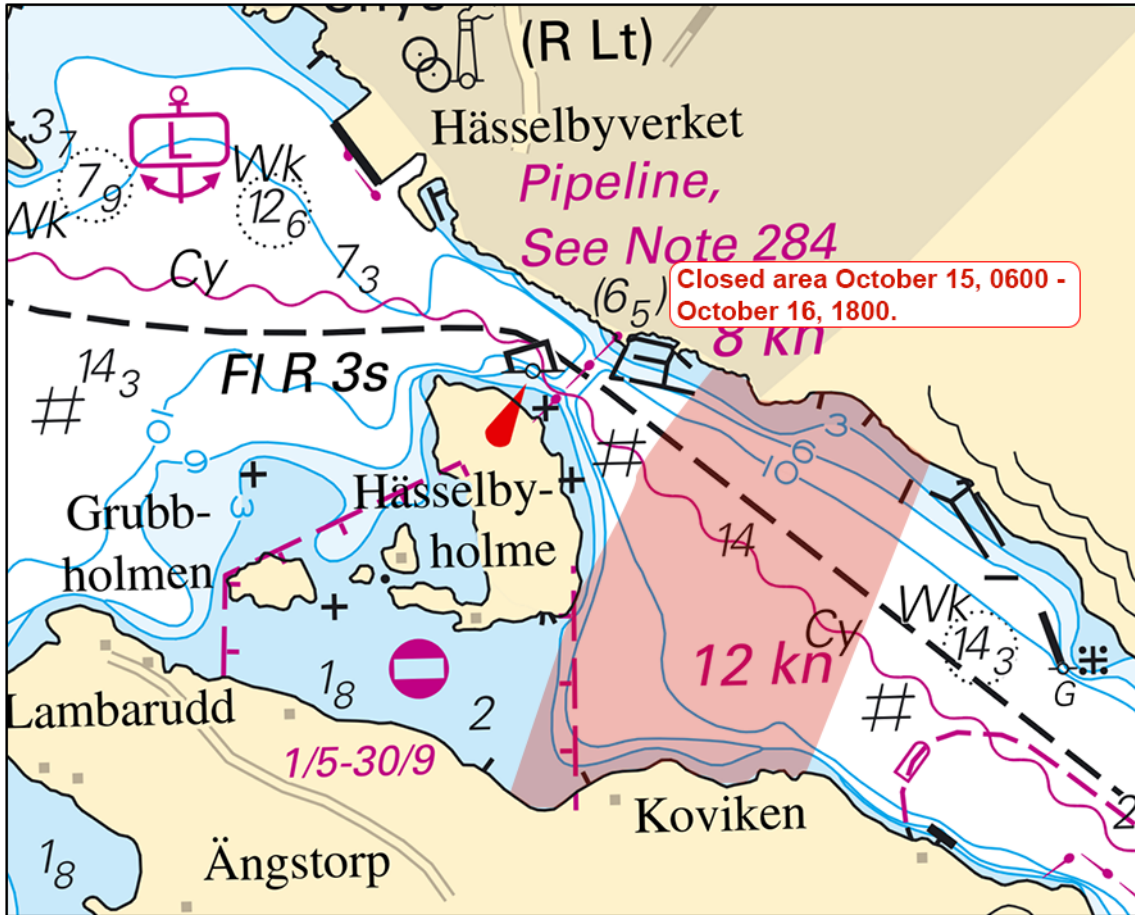
Fairway between Hässelby and Lovön at Hässelbyholme will be closed for traffic in connection with the establishment of water pipeline.

All vessels involved in operation are equipped with AIS and VHF.

Closed fairway a) - b)	a)	59-20,93N	017-49,71E	See chartlet
	b)	59-21,41N	017-50,20E	

Not shown in ENC.

Bsp Mälaren - Hjälmaren 2016/s48, s49



Hässelbyholme

Sjöfartsverket. Publ. 2 oktober 2019

Central Baltic

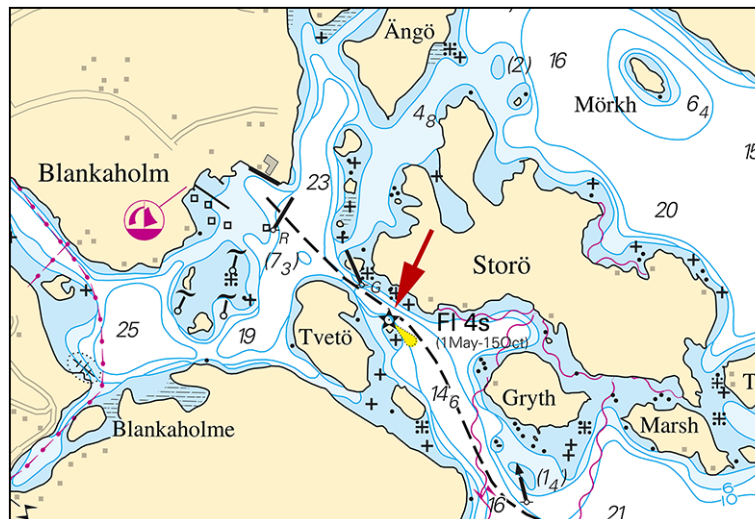
* 14186

Chart: 623

Sweden. Central Baltic. NW of Flivik. Blankaholm. Tvetö. Storö. Light.

Insert	light FI W 4s 3M with text '(1 May-15 Oct)'	57-35,037N	016-32,533E
--------	---	------------	-------------

Bsp Kalmarsund 2014/s08



Blankaholm

Transportstyrelsen. Publ. 3 oktober 2019

*** 14382 (T)****Chart: 712****Sweden. Central Baltic. Kalmar harbour. Outer harbour approach. Temporary reduced maximum draft.**

Time: Until further notice

Maximum draft for vessels calling Kalmar Outer Harbour has been reduced to 6.5 m.

Kalmar outer harbour	56-39,67N	016-22,70E
----------------------	-----------	------------

Not shown in ENC.

Bsp Kalmarsund 2014/s35

Sjöfartsverket, Kalmar. Publ. 2 oktober 2019

*** 14384 (T)****Chart: 71****Sweden. Central Baltic. E of Öland. SE of Kårehamn. Oil recovery from wreck**

Time: October 15 - November 1, 2019.

During the period oil recovery from wreck will be in progress by vessel 'Vina/OVJJ2'. Vessel will be anchored with 6 anchor 500 - 800 meters from vessel position. Anchors are marked with light buoys equipped with radar reflectors. Vessel can be contacted on VHF CH 16 or telephone: +45 24 62 66 11.

Minimum CPA of 0,5 nm.

Wreck	56-48,308N	017-12,282E
-------	------------	-------------

Bsp Kalmarsund 2014/s07

JD-Contractors A/S Publ. 2 oktober 2019

Kattegat*** 14390 (T)****Chart: 92, 923, 924****Sweden. Kattegat. W of Halmstad. Ringenäs. Firing exercise. October 8 - 10.**

Position: Approx.	56-40,8N	012-38,6E	Firing restriction area R41 A RINGENÄS
-------------------	----------	-----------	--

Firing will take place at R41A Ringenäs firing range during stated times. The dangerous area extends from the shore according to table below. A light on shore, VQ R, will be shown during firing.

For further information call +46 35 266 39 55, +46 35 536 77.

Date	Time	Range
October 8	0930 - 2030 LT	2.5 M
October 9	0830 - 2030 LT	2.5 M
October 10	0830 - 1630 LT	2.5 M

Not shown in ENC.

Bsp Västkusten S 2019/s29, s30

Försvarsmakten, Lv6. Publ. 3 oktober 2019

Skagerrak

* 14347

Chart: 937

Sweden. Skagerrak. N of Tjurholmen. Name.

Insert	name 'Anselm' at lateral mark	58-59,202N	011-05,746E
--------	-------------------------------	------------	-------------

Bsp Västkusten N 2019/s06



Anselm

Sjöfartsverket. Publ. 3 oktober 2019

* 14352

Chart: 932, 933, 9331

Sweden. Skagerrak. Islandsberg wave power farm. NW of Gullholmen. Buoyage.

Move	buoy from position 58-11,740N 011-22,340E to position	58-11,817N	011-22,237E
------	---	------------	-------------

Bsp Västkusten N 2019/s19, s33

Sjöfartsverket. Publ. 3 oktober 2019

* 14381 (T)

Chart: 933, 9331

Sweden. Skagerrak. SE of Lysekil. Buoy temporarily withdrawn.

Time: Until further notice

Special light buoy temporarily withdrawn.

Special light buoy	58-15,545N	011-27,708E
--------------------	------------	-------------

Not shown in ENC.

Bsp Västkusten N 2019/s19, s32

SMHI. Publ. 2 oktober 2019