

Notices to Mariners, SWEDEN Swedish Maritime Administration



Areas in Swedish Notices to Mariners



SJÖFARTSVERKET

Editorial office
Swedish Maritime Administration
Ufs
601 78 NORRKÖPING
Sweden
tel: 0771 630 605
e-mail: ufs@sjofartsverket.se
Publisher:
Hydrographer Patrik Wiberg

ANNOUNCEMENTS

* 14180 (T)

Chart: 6143, 6144, 6145, 615, 616, 6163

Stockholm archipelago. Sandhamn - Utö. Swimrun competition.

Time: August 31 and September 2, 2019

A swimrun competition will take place on September 2 from 'Sandhamn' to the island 'Utö'. A shorter version of the race will take place on August 31. For information about the race course, please refer to <https://otilloswimrun.com/>. Mariners are advised to pass with caution and to respect instructions from safety crew.

Sandhamn	59-17,4N	018-54,4E
Utö	58-58,3N	018-20,8E

Not shown in ENC.

<https://otilloswimrun.com/>

Bsp Stockholm M 2018/s24, s25, s29, s30, s31, s32, s36, s37, s38, s43, s44, s45, s47, s49, s50, Bsp Stockholm N 2018/s41, Bsp Stockholm S 2018/s06, s07, s09, s10, s11, s16, s17, s18, s34, s36, s37

Ö till Ö. Publ. 15 augusti 2019

* 14219 (T)

Chart: 923

Hallands väderö. Torekov. Swimming competition.

Time: August 25, 1000 - 1300 LT

Swimming competition between 'Hallands väderö' and Torekov. Mariners are requested to keep sharp lookout and to respect instructions from safety crew.

More information: <http://www.torekovopenwater.se/>

Hallands väderö	a)	56-26,10N	012-34,50E
Torekov	b)	56-25,60N	012-37,30E

Not shown in ENC.

Bsp Sydkusten 2012/s08, s09, Bsp Västkusten S 2019/s32, s62

Torekov open water. Publ. 15 augusti 2019

NOTICES

Sea of Åland and Archipelago Sea

* 14216 (T)

Chart: 536, 61, 611, 619

Sweden. Sea of Åland and Archipelago Sea. E of Vaddö. Firing exercise. August 2019.

Position: Approx.	59-58N	018-54E	Vaddö Firing practice area
-------------------	--------	---------	----------------------------

Firing exercises will be carried out at Vaddö firing range during times listed below. During these times the charted danger area "R 15A" is closed within a distance of 3 M from shore.

Further information: Tel +46 10 823 65 82 or VHF channel 16, call Vaddö Skjutfält.

Date	Time
August 13 - 14	0900 - 1800 LT
August 16	0900 - 1800 LT

Not shown in ENC.

Bsp Stockholm N 2018/s04, s05, s06, s08, s20, s21

Försvarsmakten. Publ. 10 augusti 2019

Northern Baltic

* 13797 (T)

Chart: 6141, 6142

Sweden. Northern Baltic. Stockholm. Djurgårdsbrunnsviken. Boat race August 28 - 31, 2019. Closed area.

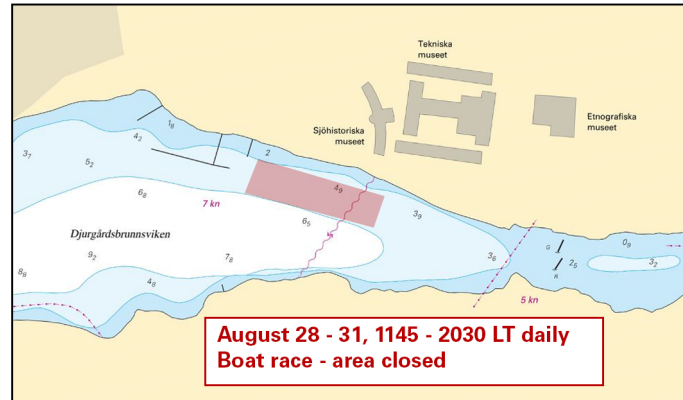
Time: August 28 - 31, daily between 1145 - 2030 LT

The marked-out area in the chartlet is closed for all traffic in connection with a boat race.

Closed area - Djurgårdsbrunnsviken	59-19,903N	018-06,824E
------------------------------------	------------	-------------

Not shown in ENC.

Bsp Mälaren - Hjälmarén 2016/s52, Bsp Stockholm M 2018/s06, s10



Djurgårdsbrunnsviken

Länsstyrelsen, Stockholms län. Publ. 15 augusti 2019

* 14225 (T)

Chart: 617, 621, 6211

Sweden. Northern Baltic. E of Oxelösund. N Kränkan. Oil recovery from wreck.

Time: August 25 - September 25, 2019.

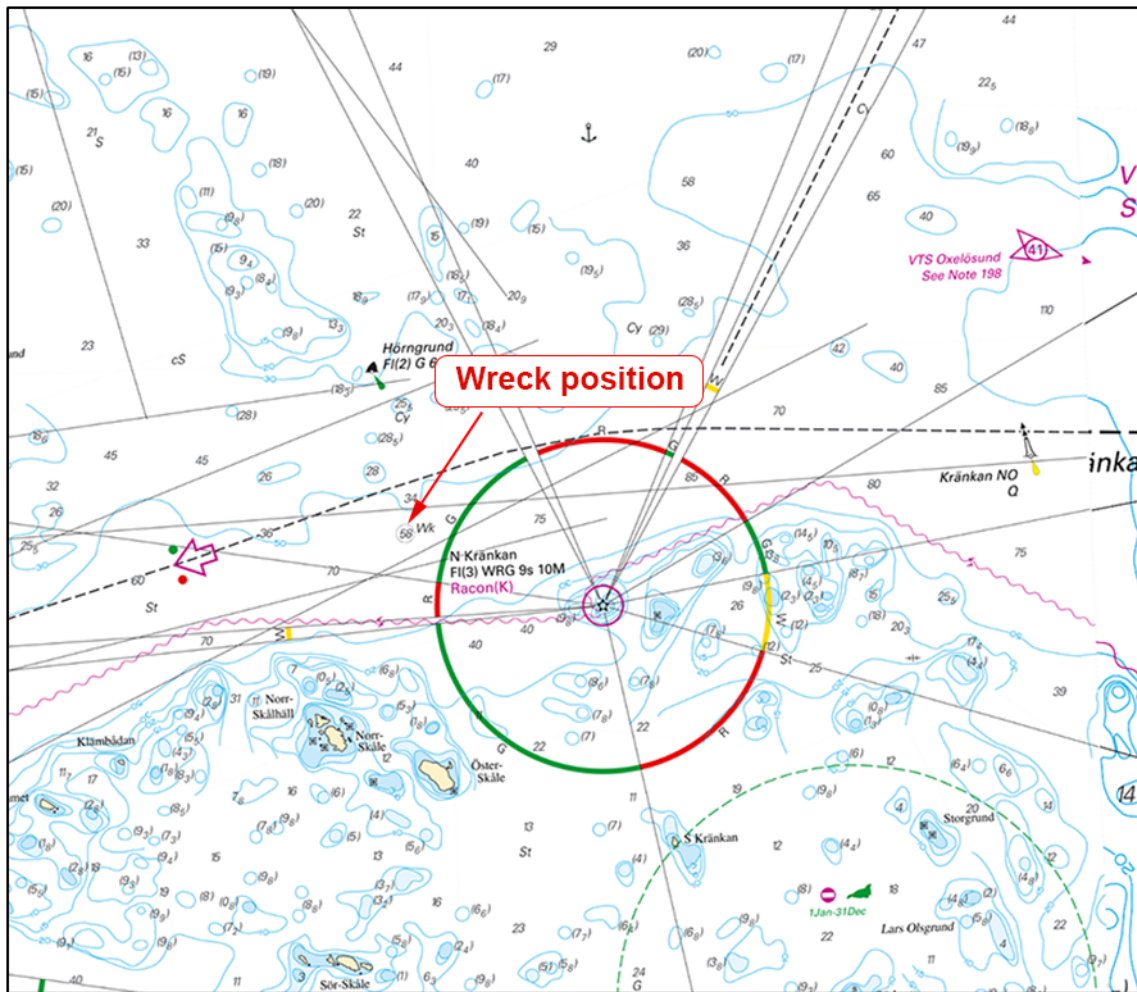
During period oil recovery from wreck will be in progress by vessel 'Vina/OVJJ2'. Vessel will be anchored with 6 anchor 500 meters from vessel position.

Vessel can be contacted on VHF CH 16 or telephone: +45 24 62 66 11.

Minimum CPA of 500 meters and slow passage are requested.

Wreck position	58-37,10N	017-22,30E
----------------	-----------	------------

Bsp Ostkusten 2019/s23, s30



Wreck

JD Contractor A/S. Publ. 15 augusti 2019

Lake Mälaren and Södertälje Canal

* 13770 (T)

Chart: 111

Sweden. Lake Mälaren and Södertälje Canal. Lake Albysjön. Recreational area Flottsbro Friluftsområde. European Championship for Hovercraft. Restricted area.

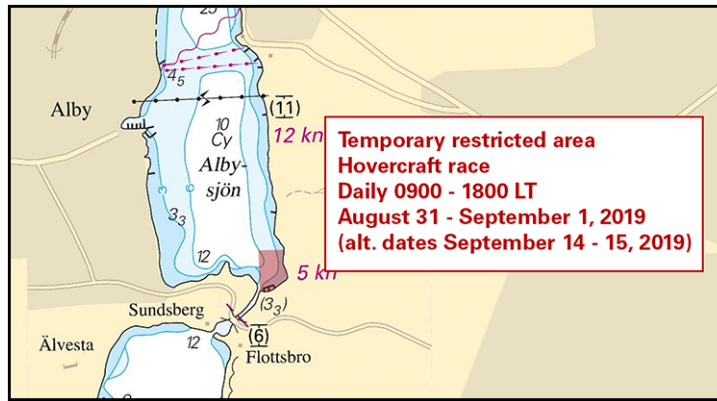
Time: August 31 - September 1, daily between 0900 - 1800 LT. (Alternative schedule: September 14 - 15, daily between 0900 - 1800 LT.)

During the European Championship for Hovercraft an area in the south-eastern part of Albysjön is restricted for all unauthorised vessels. Officiating vessels and units taking part in the event are exempt.

Albysjön	59-13,97N	017-52,79E
----------	-----------	------------

Not shown in ENC.

Bsp Mälaren - Hjälmaren 2016/s49



Albysjön

Länsstyrelsen i Stockholms län. Publ. 15 augusti 2019

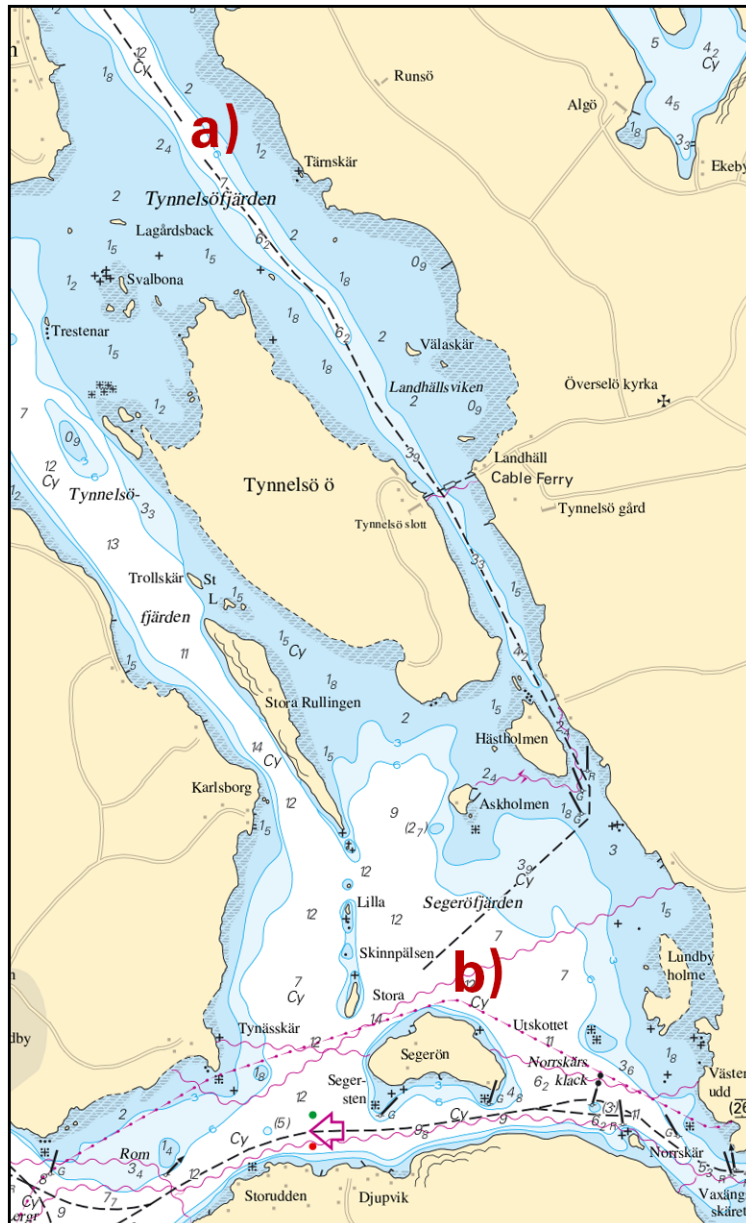
* 14210

Chart: 111, 113

Sweden. Lake Mälaren and Södertälje Canal. N of Strängnäs. Tynnelsöfjärden - Segeröfjärden. Fairway.

Insert	track as shown on chartlet between a) - b)	a)	59-26,04N	017-04,55E
		b)	59-23,01N	017-06,08E

Bsp Mälaren - Hjälaren 2016/s23, s26



Track Tynnelsöfjärden - Segeröfjärden

Sjöfartsverket. Publ. 13 augusti 2019

Lake Vänern and Trollhätte Canal

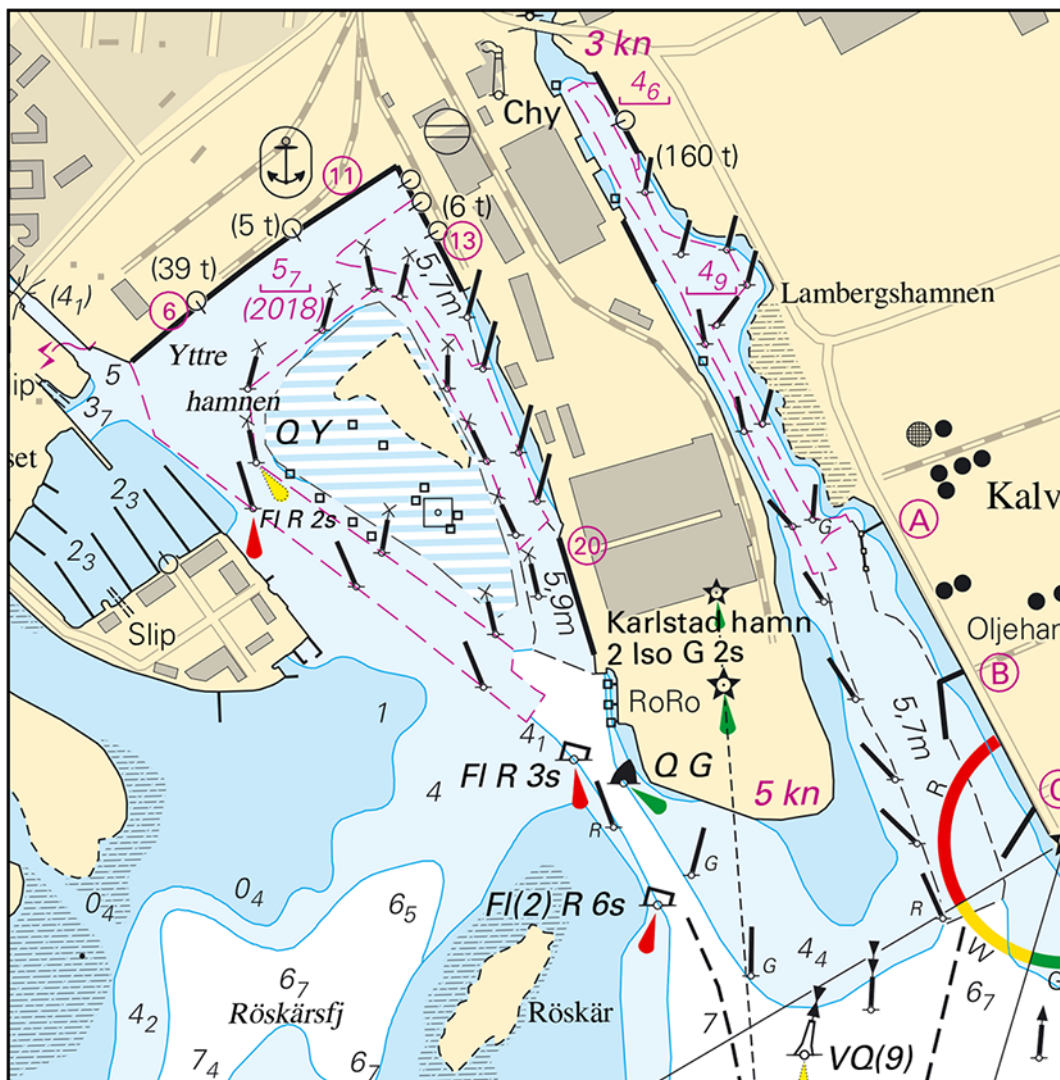
* 14224

Chart: 131, 132

Sweden. Lake Vänern and Trollhätte Canal. Karlstad. Lambergshamnen. Yttre hamnen. Depth.

Delete	depth 5 m	a)	59-22,320N	013-31,727E	Lambergshamnen
Delete	dredged area 5.2 m	b)	59-22,229N	013-31,838E	Lambergshamnen
Delete	dredged area 5.5 and 6.2 m, respectively	c)	59-21,911N	013-32,155E	Lambergshamnen
Insert	bar swept area 4.6 m	d)	59-22,342N	013-31,739E	Lambergshamnen
Insert	bar swept area 4.9 m	e)	59-22,222N	013-31,887E	Lambergshamnen
Insert	dredged area 5.7 m	f)	59-21,882N	013-32,176E	Lambergshamnen
Delete	depth 5.1 m	g)	59-22,322N	013-31,391E	Yttre hamnen
Delete	depth 5.2 m	h)	59-22,177N	013-31,014E	Yttre hamnen
Delete	dredged area 5.7 m	i)	59-22,139N	013-31,096E	Yttre hamnen
Delete	dredged area 5.9 m	j)	59-22,11N	013-31,551E	Yttre hamnen
Insert	bar swept area 5.7 m	k)	59-22,203N	013-31,251E	Yttre hamnen
Insert	dredged area 5.7 m	l)	59-22,213N	013-31,47E	Yttre hamnen
Insert	dredged area 5.9 m	m)	59-21,977N	013-31,639E	Yttre hamnen

Bsp Väner 2018/s12, s46



Port of Karlstad