

Notices to Mariners, SWEDEN Swedish Maritime Administration



Areas in Swedish Notices to Mariners



SJÖFARTSVERKET

Editorial office
Swedish Maritime Administration
Ufs
601 78 NORRKÖPING
Sweden
tel: 0771 630 605
e-mail: ufs@sjofartsverket.se
Publisher:
Hydrographer Patrik Wiberg

ANNOUNCEMENTS

* 14074 (T)

Chart: 92, 923

Halmstad. Maximum recommended vessel draft.

See: 2019:766/14054(T), 2019:762/14158(T)

Time: Until further notice.

Maximum recommended vessel draft to Port of Halmstad is 9.5 metres.

Port of Halmstad	56-39,0N	012-50,1E
------------------	----------	-----------

Not shown in ENC.

Bsp Västkusten S 2019/s09, s31, s66

Sjöfartsverket. Publ. 1 augusti 2019

* 14192 (T)

Chart: 623

Loftahammar. Competition "Loftahammar Endurance Day". Closed areas.

Time: August 3, 2019. 0830 - 1630 LT

Competition Loftahammar Endurance Day is located in an area west and southwest of Loftahammar.

The competition is held on land as well as in the water.

At four different locations the fairway is closed for all traffic at the following times:

Area 1: Fairway Bjursunds ström north	0830 - 0930 LT	57-55,85N	016-36,10E
Area 2: Fairway below bridge Bjursundsbron	0845 - 1000 LT	57-55,20N	016-35,40E
Area 3: Fairway Hultö - Björkö	0945 - 1130 LT	57-52,90N	016-38,05E
Area 4: Fairway Rågö - Kalvö	1000 - 1630 LT	57-52,05N	016-43,45E

The competition also take place in waters where there is no fairway, see attached picture, and extra caution is advised in those areas.

Securityboats will watch VHF CH 16.

Not shown in ENC.

Bsp Ostkusten 2019/s48, s49, s50, s51



Loftahammar Endurance Day

Länsstyrelsen Kalmar Län. Publ. 1 augusti 2019

NOTICES

Bay of Bothnia

* 14013 (T)

Chart: 41, 411

Sweden. Bay of Bothnia. S of Haparanda. Marine geotechnical surveys.

Time: August 6 - 31

Marine geotechnical surveys by vessel 'Ocean Surveyor/SBJO'. Mariners are requested to show consideration and pass with caution.

Contact: +46 702-270 253

Survey area	a)	65-40N	023-50E
	b)	65-40N	024-13E
	c)	65-34N	024-13E
	d)	65-34N	023-50E

Not shown in ENC.

Bsp Bottenviken 2018/s05, s12, s13

SGU. Publ. 31 juli 2019

14185

Chart: 4, 41

Finland. Bay of Bothnia. Oulu. New fairway. Buoyage.

1. A new fairway has been introduced. See chartlet.

Insert	a fairway with maximum authorized draught 12,5m between a) - j)	a)	65-20,893N	023-58,241E
		b)	65-18,474N	024-18,469E
		c)	65-15,863N	024-25,597E
		d)	65-14,049N	024-31,302E
		e)	65-14,035N	024-36,832E
		f)	65-12,877N	024-43,068E
		g)	65-12,716N	024-46,507E
		h)	65-10,075N	024-51,450E
		i)	65-09,106N	024-57,257E
		j)	65-08,069N	024-58,718E

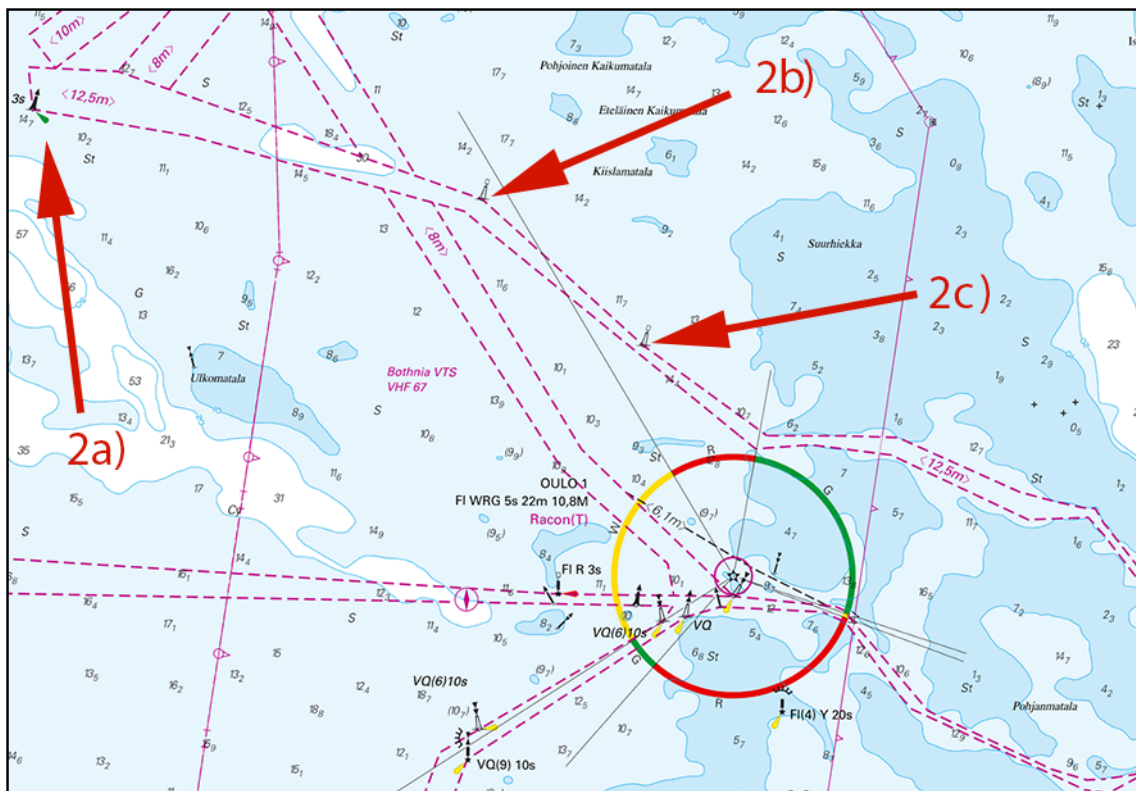
2. Insert buoyage.

Insert	starboard hand light buoy FI G 3s	a)	65-20,252N	023-57,854E
Insert	port hand buoy	b)	65-18,632N	024-18,551E
Insert	port hand buoy	c)	65-15,849N	024-26,001E

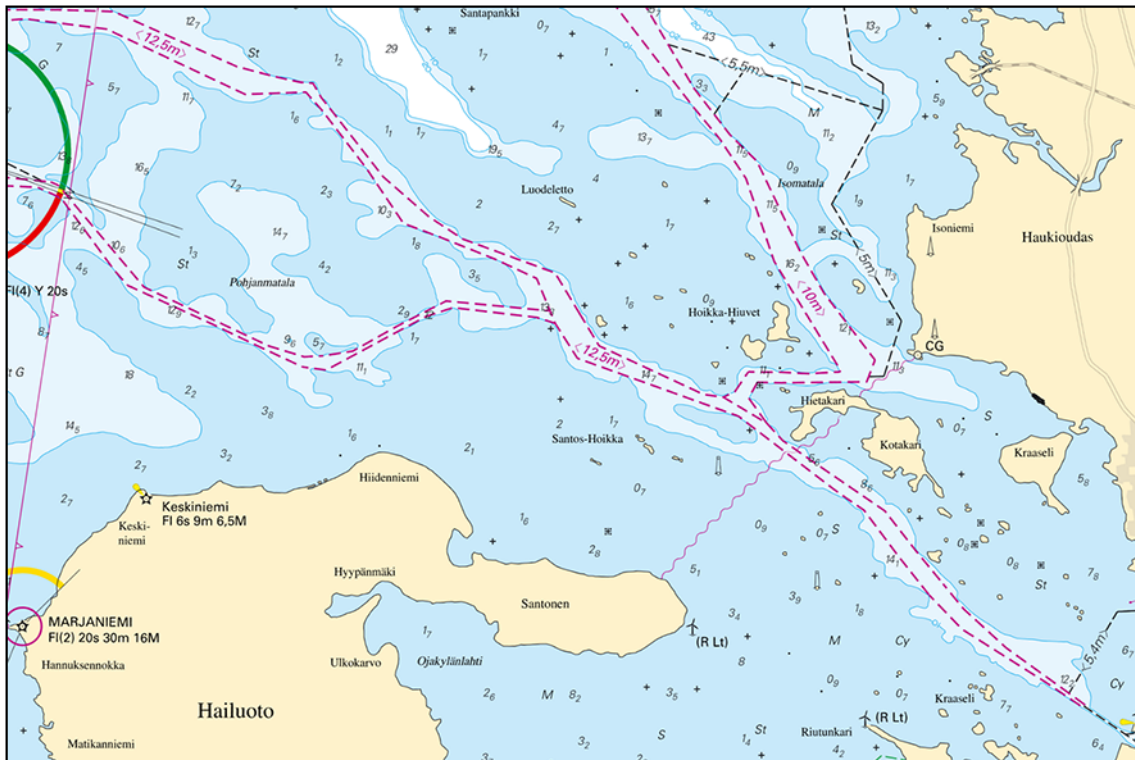
3. Amend maximum authorized draught. See chartlet.

Amend	maximum authorized draught from 10,0m to 12,5m between position a) - b)	a)	65-08,07N	024-58,72E
		b)	65-00,11N	025-24,05E

Bsp Bottenviken 2018/s05



New fairway to Oulu



New and amended fairway to Oulu

Finnish NtM 2019: 18/140, 141, 149 Publ. 31 juli 2019

The Quark

* 14189

Chart: 429, 5121, 513

Sweden. The Quark. Holmsund. S of Gåshällan. Obstruction removed.

Expired notices: 2019:765/14181(T)

The port hand spar buoy that had drifted and was partly sunken is now removed.

Approx. position spar buoy	63-38,285N	020-14,996E
----------------------------	------------	-------------

Not shown in ENC.

Bsp Bottenhavet N 2019/s31, s32, s46

Sjöfartsverket. Publ. 26 juli 2019

Sea of Åland and Archipelago Sea

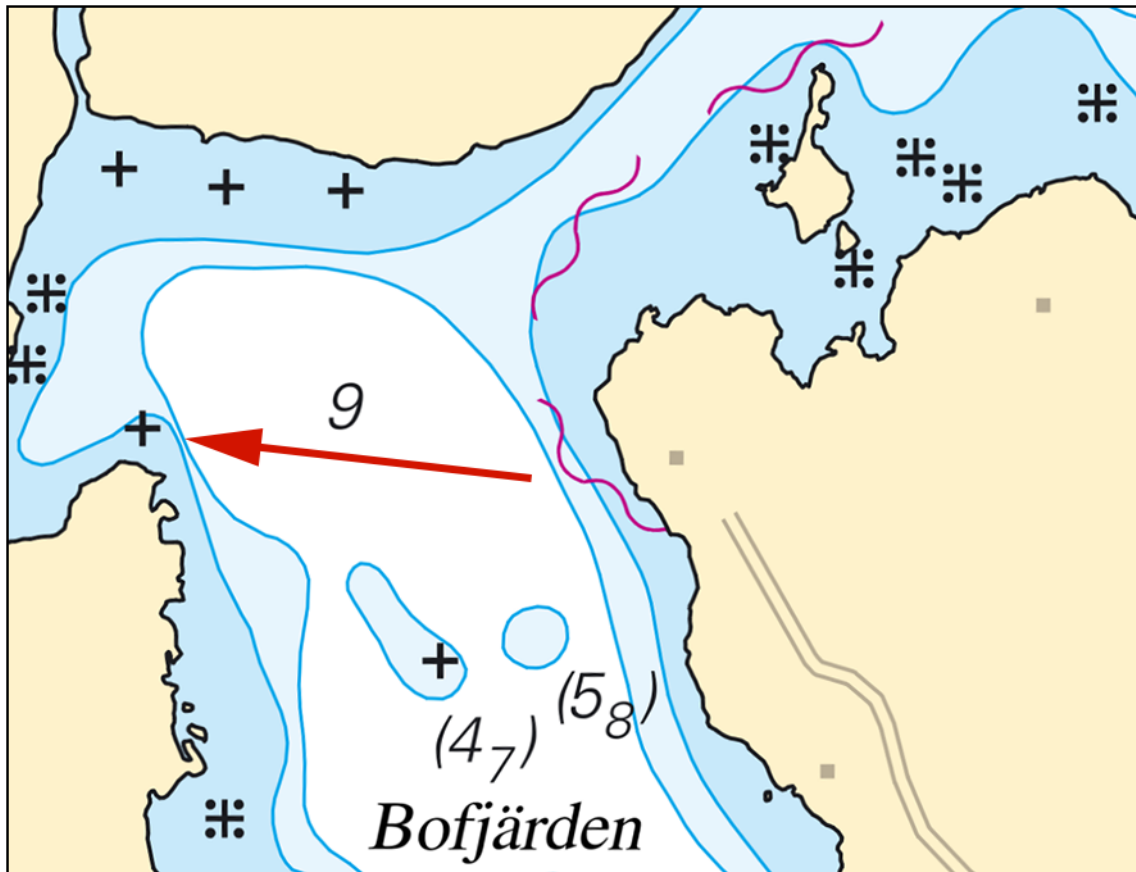
* 14109

Chart: 611

Sweden. Sea of Åland and Archipelago Sea. Björkö. Bofjärden. Depth.

Insert	dangerous underwater rock and amend 3 m depth contour	59-53,116N	019-03,094E
--------	---	------------	-------------

Bsp Stockholm N 2018/s24, s61



Bofjärden

Sjöfartsverket. Publ. 31 juli 2019

Northern Baltic

* 14001 (T)

Chart: 617, 6173, 62, 621, 6211

Sweden. Northern Baltic. Oxelösund. Sail race. August 11 - 17, 2019.

Time: August 11 - 17, races August 13 - 17.

Sail competition SSAB ORC European Championship 2019 is taking place in the waters surrounding Oxelösund during stated dates. Mariners should keep a sharp look-out.

Contact event board: +46-705 349 830

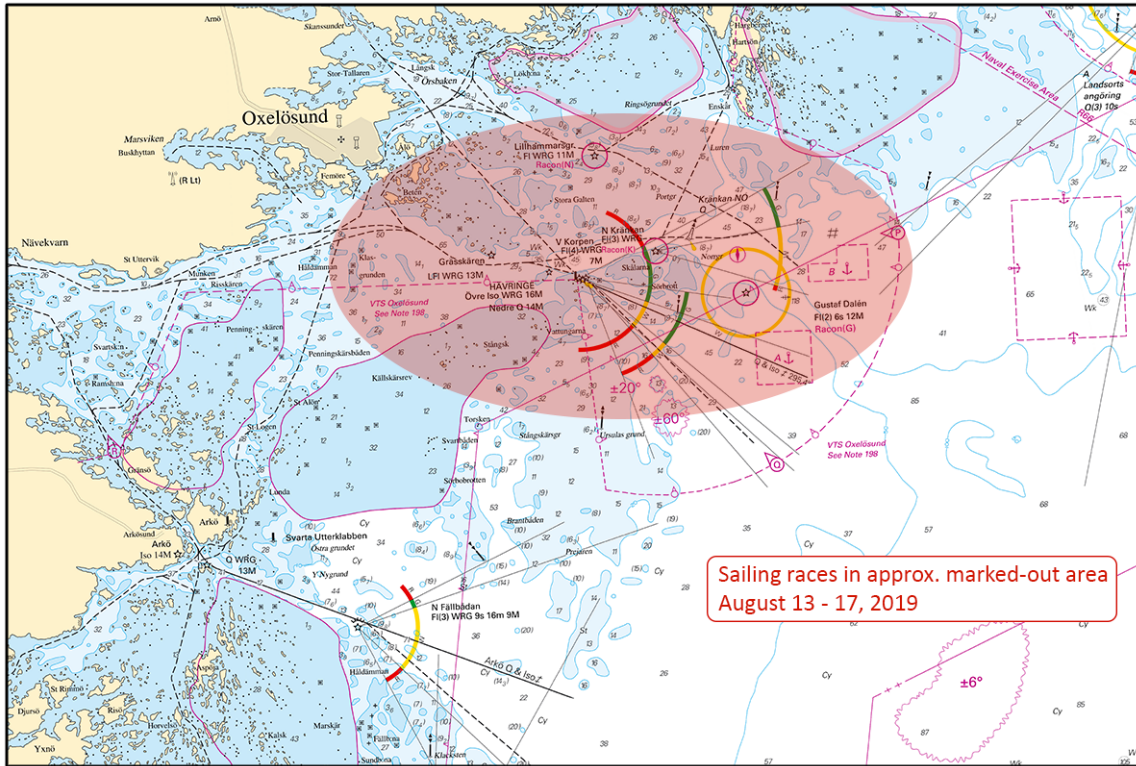
Working channels safety boats: VHF Ch 72 and 77.

Oxelösund	58-39,3N	017-07,1E
-----------	----------	-----------

<https://orc2019.oxss.nu/>

Not shown in ENC.

Bsp Kalmarsund 2014/s06, Bsp Ostkusten 2019/s20, s21, s22, s23, s28, s30, s31, s32, s33, Bsp Stockholm S 2018/s04, s41



Oxelösund - Sailing races

Oxelösunds Segelsällskap. Publ. 31 juli 2019

* 14196

Chart: 6143, 6144, 615

Sweden. Northern Baltic. Stockholms archipelago. W of Sandön. Buoyage.

Move	starboard hand light buoy from 59-17,060N 018-53,880E to	a)	59-17,034N	018-53,863E
Move	starboard hand light buoy from 59-16,688N 018-53,946E	b)	59-16,683N	018-53,913E

Bsp Stockholm M 2018/s25, s31

Sjöfartsverket. Publ. 1 augusti 2019

* 14197

Chart: 6142

Sweden. Northern Baltic. Stockholm archipelago. N of Norra Lagnö. Light buoy.

Move	port hand light buoy 42 m SE to	a)	59-21,705N	018-23,664E
------	---------------------------------	----	------------	-------------

Bsp Stockholm M 2018/s14, s15, s21, s46

Sjöfartsverket. Publ. 1 augusti 2019

* 14199 (P)

Chart: 6143, 6144, 615

Sweden. Northern Baltic. Stockholm archipelago. Sandön. Forthcoming amendments to buoyage.

Expired notices: 2019:749/13914(P)

Forthcoming changes of buoyage next to Sandön. Preliminary positions as listed.

Move	port hand light buoy from 59-17,452N 018-53,545E to	a)	59-17,432N	018-53,563E
Move	port hand light buoy from 59 15,717N 018 55,085E to	b)	59-15,729N	018-55,099E
Delete	starboard hand spar buoy	c)	59-16,019N	018-55,590E
Insert	south cardinal spar buoy	d)	59-16,044N	018-55,626E
Delete	port hand spar buoy	e)	59-15,850N	018-57,184E
Insert	north cardinal spar buoy	f)	59-15,850N	018-57,184E
Move	port hand light buoy from 59-16,147N 018-57,537E to	g)	59-16,163N	018-57,548E

Not shown in ENC.

Bsp Stockholm M 2018/s25, s31, s32, s52, Bsp Stockholm N 2018/s35, s41

Sjöfartsverket. Publ. 1 augusti 2019

Kattegat

* 14054 (T)

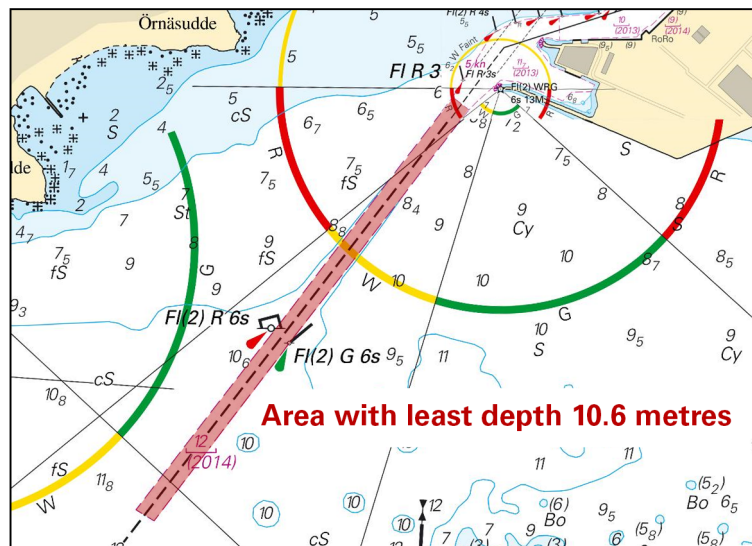
Chart: 923

Sweden. Kattegat. Approach to Halmstad. Approach channel. Depth.

A bar-sweeping has revealed less depth in the channel to Port of Halmstad. Least depth is 10.6 m. The survey will later be incorporated in its entirety in ENC and paper charts.

Area with least depth 10.6 m	56-38,32N	012-49,20E
------------------------------	-----------	------------

Bsp Västkusten S 2019/s31



Approach to Port of Halmstad

Sjöfartsverket. Publ. 1 augusti 2019

Lake Vänern and Trollhätte Canal

* 14198

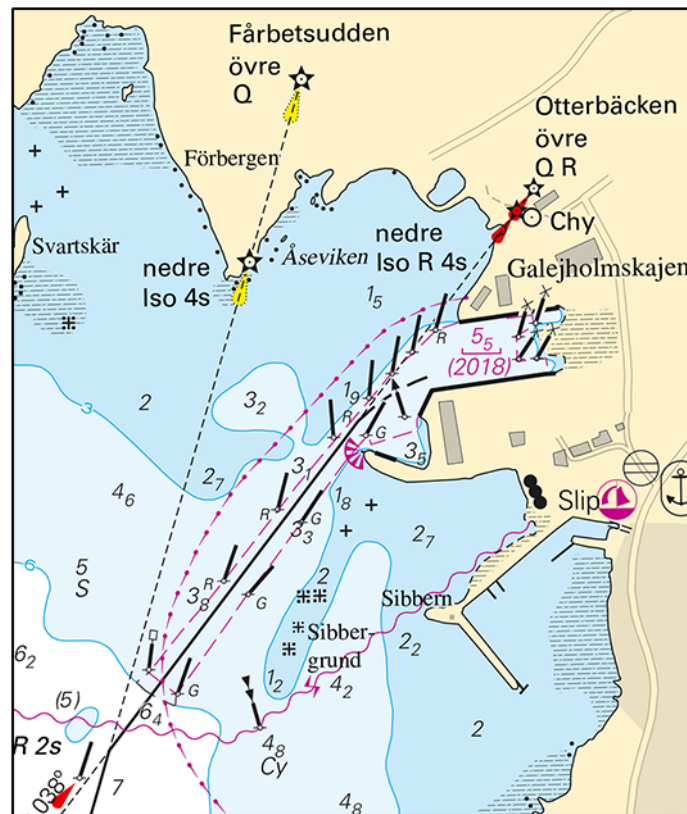
Chart: 133

Sweden. Lake Vänern and Trollhätte Canal. Otterbäcken. Depths.

A depth survey in Otterbäcken has shown other depths than charted. Important amendments are shown below, and will be published in the next print of affected charts. The changes are available as an update in ENC.

Replace	dredged area with swept area 5,5 m (2018) between a) - n)	a)	58-57,000N	014-01,987E
		b)	58-56,991N	014-01,985E
		c)	58-56,976N	014-01,896E
		d)	58-56,983N	014-01,889E
		e)	58-56,732N	014-01,519E
		f)	58-56,754N	014-01,465E
		g)	58-57,087N	014-02,024E
		h)	58-57,100N	014-02,207E
		i)	58-57,092N	014-02,208E
		j)	58-57,080N	014-02,176E
		k)	58-57,057N	014-02,177E
		l)	58-57,058N	014-02,232E
		m)	58-57,043N	014-02,236E
		n)	58-57,027N	014-02,013E

Bsp Göta kanal 2011/s61, Bsp Vänern 2018/s46



Otterbäckens