

Notices to Mariners, SWEDEN Swedish Maritime Administration



Areas in Swedish Notices to Mariners



SJÖFARTSVERKET

Editorial office
Swedish Maritime Administration
Ufs
601 78 NORRKÖPING
Sweden
tel: 0771 630 605
e-mail: ufs@sjofartsverket.se
Publisher:
Hydrographer Patrik Wiberg

ANNOUNCEMENTS

* 14058 (T)

Chart: 742, 7421

Karlshamn. Eriksberg. Swimrun. Close area. July 20, 2019.

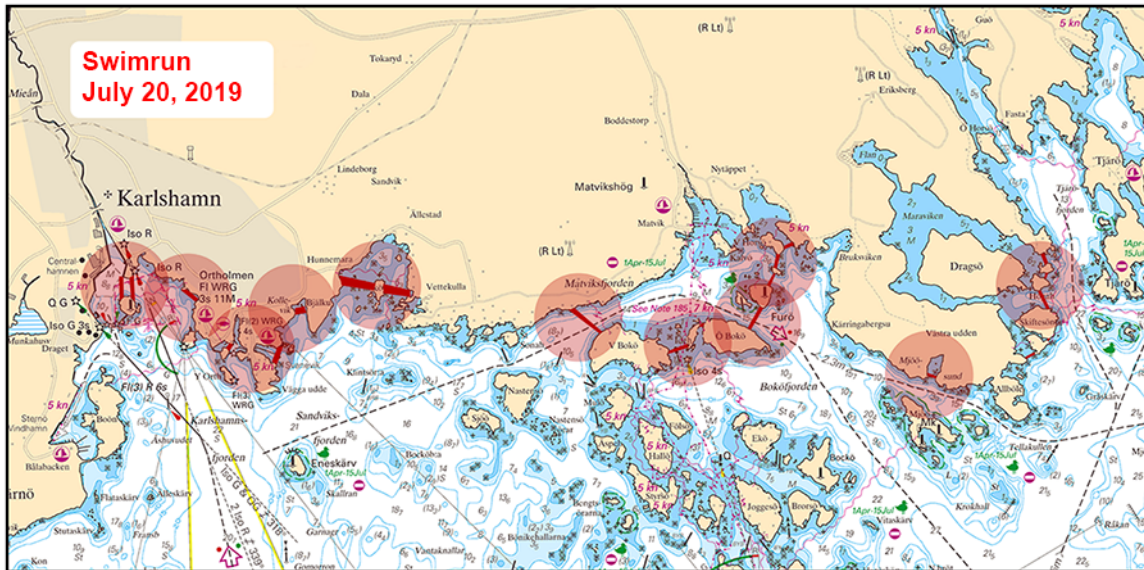
Time: July 20, start at 1000 LT.

Closed area Furö - Vettekulla and fairway between Östra and Västra Bokö 1100 - 1400 LT and Karlshamn - Kastellet, 1200 - 1700 LT. Safety boats maintain watch on VHF CH 16. Swim areas are marked-out with yellow buoys.

Karlshamn	56-09,8N	014-51,9E
-----------	----------	-----------

Not shown in ENC.

Bsp Hanöbukten 2018/s20, s21, s47



Karlshamn

Länsstyrelsen Blekinge. Publ. 10 juli 2019

NOTICES

Bay of Bothnia

* 14168

Chart: 4151

Sweden. Bay of Bothnia. Piteå. Skuthamn. Buoyage.

Insert	port hand spar buoy	a)	65-16,184N	021-30,086E
Insert	starboard hand spar buoy	b)	65-16,134N	021-30,110E
Insert	starboard hand spar buoy	c)	65-16,169N	021-30,233E
Insert	starboard hand spar buoy	d)	65-16,168N	021-30,307E

Bsp Bottenviken 2018/s55

Piteå Hamn AB. Publ. 11 juli 2019

The Quark

* 14169

Chart: 5121

Sweden. The Quark. Approach to Umeå. Geotechnical surveys completed.

Expired notices: 2019:756/14055(T)

Geotechnical surveys N of Lillbådan are completed.

N of Lillbådan	63-39,8N	020-20,2E
----------------	----------	-----------

Not shown in ENC.

Bsp Bottenhavet N 2019/s45, s46, s47

Sjöfartsverket. Publ. 11 juli 2019

Sea of Åland and Archipelago Sea

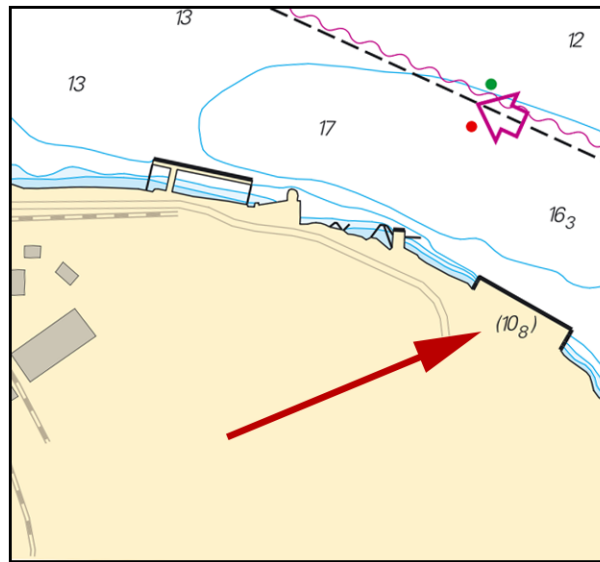
* 14107

Chart: 536

Sweden. Sea of Åland and Archipelago Sea. Hargshamn. Depth.

Amend	depth at berth to 10,8 m	a)	60-10,137N	018-29,268E
-------	--------------------------	----	------------	-------------

Bsp Stockholm N 2018/s61



Hargshamn

Sjöfartsverket. Publ. 10 juli 2019

Northern Baltic

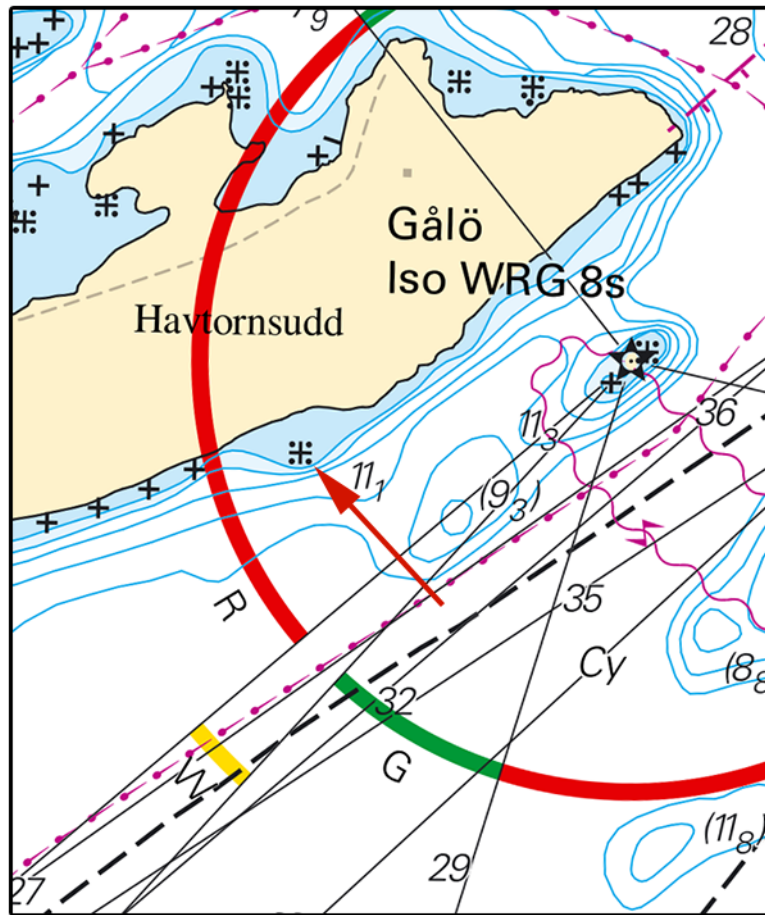
* 14098

Chart: 6163

Sweden. Northern Baltic. Stockholm archipelago. Gålö. Havtornsudd. Rock awash.

Insert	rock awash	59-05,553N	018-20,497E
--------	------------	------------	-------------

Bsp Stockholm M 2018/s42, Bsp Stockholm S 2018/s09



Havtorsudd

Sjöfartsverket, Norrköping. Publ. 9 juli 2019

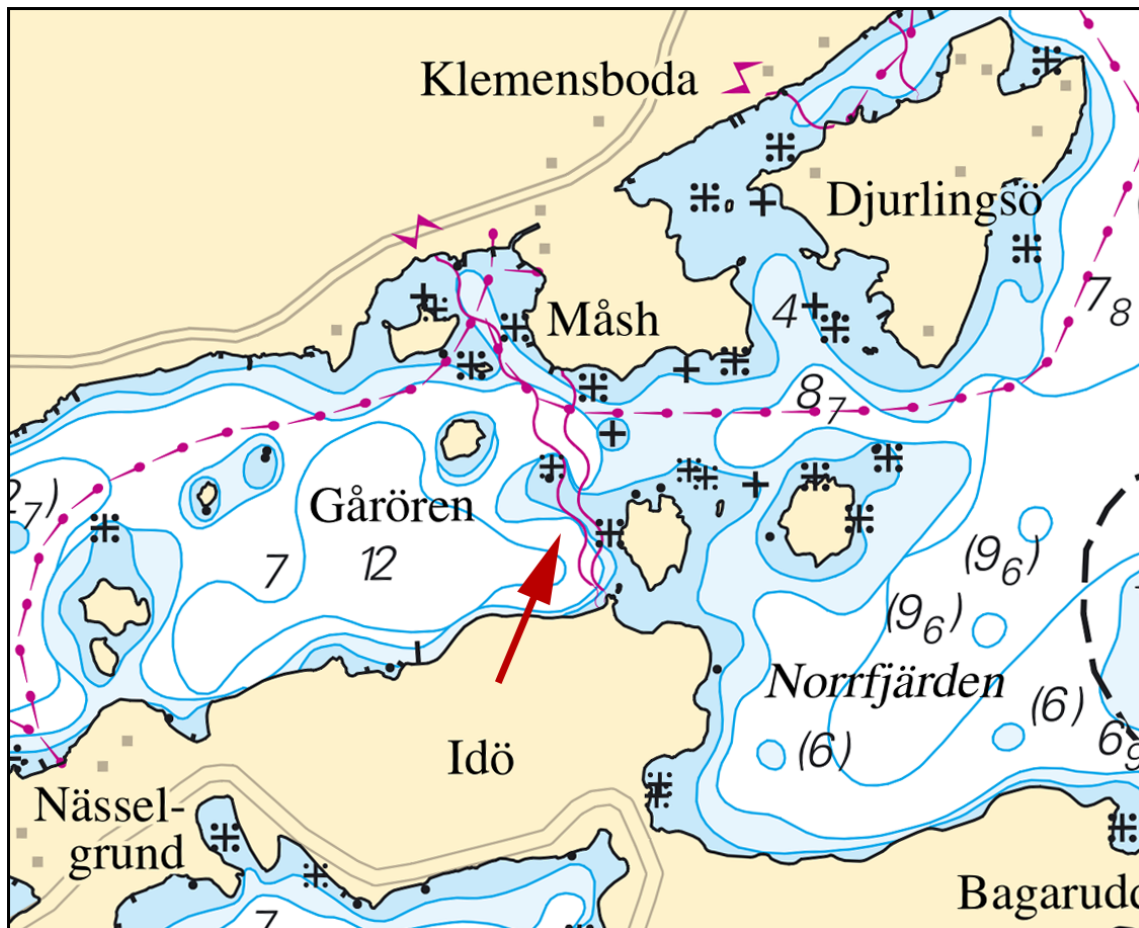
* 14100

Chart: 611, 612

Sweden. Northern Baltic. Furusund. Idö. Shoal.

Amend	depth contour as shown	59-41,300N	018-50,000E
-------	------------------------	------------	-------------

Bsp Stockholm N 2018/s23, s28



Shoal

Sjöfartsverket. Publ. 10 juli 2019

Lake Mälaren and Södertälje Canal

* 14149

Chart: 111, 113

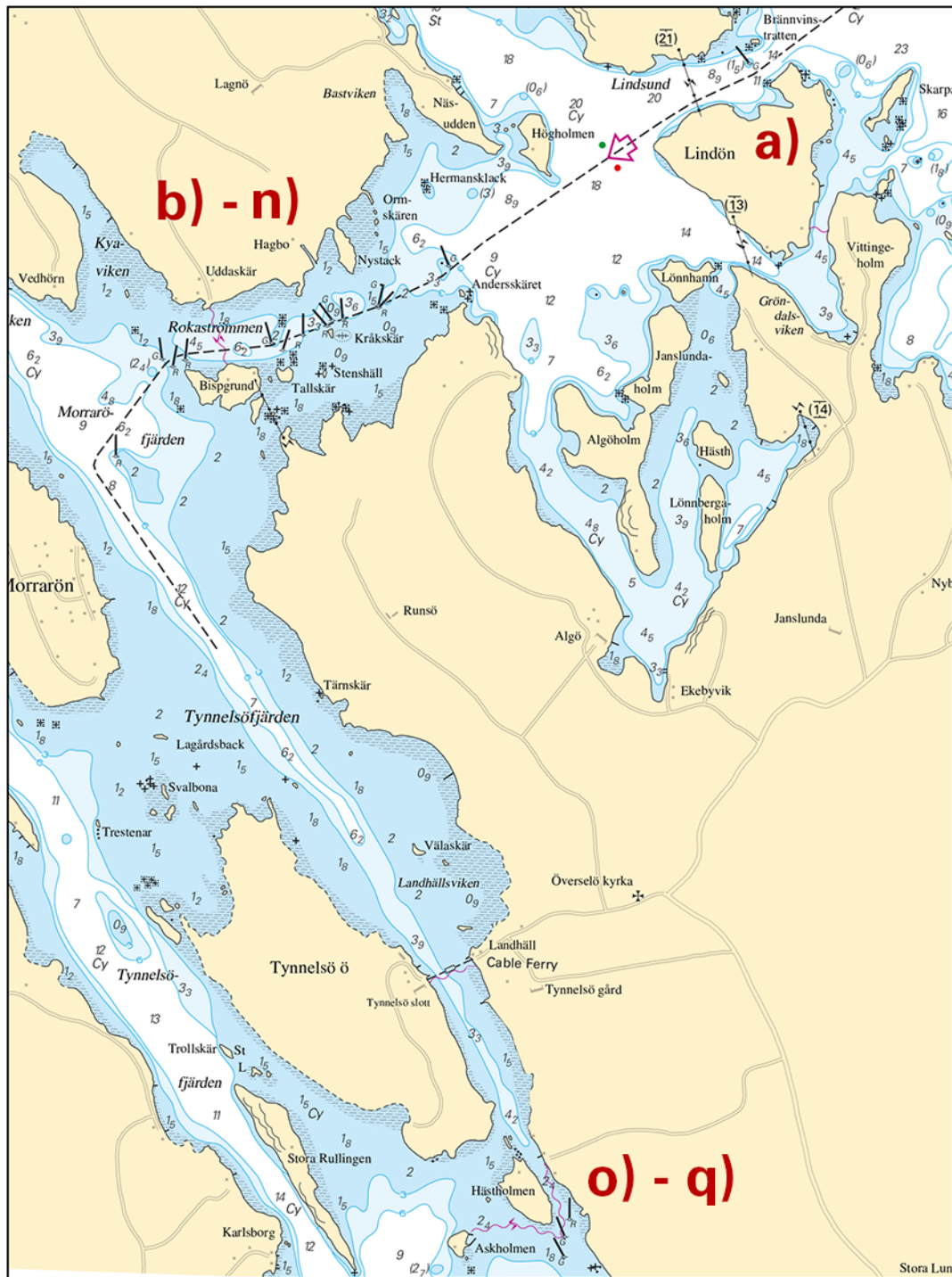
Sweden. Lake Mälaren and Södertälje Canal. N of Strängnäs. Selaön. Rokaströmmen. Segeröfjärden.
Fairway for leisure craft. Bouyage.

Expired notices: 2019:760/14104(P)

A new leisure craft fairway has been established. Positions as listed.

Insert	starboard hand spar buoy	a)	59-28,716N	017-08,788E
Insert	starboard hand spar buoy	b)	59-27,843N	017-06,258E
Insert	starboard hand spar buoy	c)	59-27,672N	017-05,663E
Insert	port hand spar buoy	d)	59-27,663N	017-05,666E
Insert	port hand spar buoy	e)	59-27,610N	017-05,365E
Insert	starboard hand spar buoy	f)	59-27,607N	017-05,279E
Insert	port hand spar buoy	g)	59-27,584N	017-05,235E
Insert	port hand spar buoy	h)	59-27,543N	017-05,031E
Insert	starboard hand spar buoy	i)	59-27,510N	017-04,766E
Insert	port hand spar buoy	j)	59-27,478N	017-04,859E
Insert	port hand spar buoy	k)	59-27,435N	017-04,037E
Insert	starboard hand spar buoy	l)	59-27,439N	017-03,844E
Insert	port hand spar buoy	m)	59-27,407N	017-03,934E
Insert	port hand spar buoy	n)	59-27,020N	017-03,457E
Insert	port hand spar buoy	o)	59-23,753N	017-07,299E
Insert	starboard hand spar buoy	p)	59-23,678N	017-07,260E
Insert	starboard hand spar buoy	q)	59-23,592N	017-07,256E
Insert	recommended track as shown			

Bsp Mälaren - Hjälmarén 2016/s23, s26



Recommended track for leisure craft - Rokaströmmen - Tynnelsö

Sjöfartsverket. Publ. 10 juli 2019

* 14160

Chart: 111

Sweden. Lake Mälaren and Södertälje Canal. SW of Bålsta. Light Lastberget. Sectors.

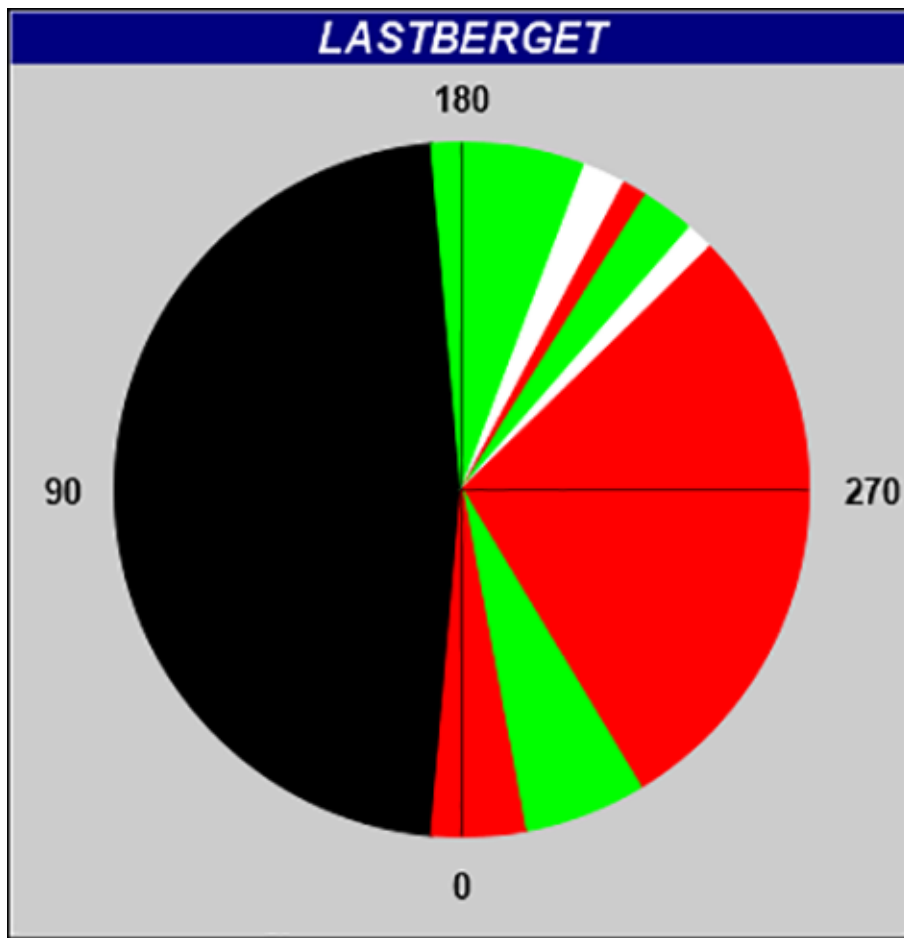
Light sectors of light Lastberget have been amended as per below.

Light 'Lastberget'	59-28,328N	017-25,822E
--------------------	------------	-------------

Bearing (from sea towards light)	Colour
005,0° - 175,0°	Dk
175,0° - 200,8°	G
200,8° - 207,9°	W
207,9° - 212,0°	R
212,0° - 221,1°	G
221,1° - 225,7°	W
225,7° - 329,0°	R
329,0° - 349,5°	G
349,5° - 005,0°	R

Adm. LoL 6682.6

Bsp Mälaren - Hjälmarén 2016/s25



Lastberget

Sjöfartsverket. Publ. 11 juli 2019

The Sound

* 14157

Chart: 921

Sweden. The Sound. Approach to Port of Malmö. Obstruction.

Insert	obstruction, bar swept - least depth 13.1 m	55-41,629N	012-54,272E
--------	---	------------	-------------

Bsp Sydkusten 2012/s15, s17

Time: Until further notice

Light 'Fogden' in the approach to Åmål, is unreliable and might be unlit.

Light 'Fogden'	59-01,874N	012-44,302E
----------------	------------	-------------

Not shown in ENC.

Bsp Vänern 2018/s06, s16

Sjöfartsverket. Publ. 9 juli 2019