

## Notices to Mariners, SWEDEN Swedish Maritime Administration



### Areas in Swedish Notices to Mariners



**SJÖFARTSVERKET**

Editorial office  
Swedish Maritime Administration  
Ufs  
601 78 NORRKÖPING  
Sweden  
tel: 0771 630 605  
e-mail: [ufs@sjofartsverket.se](mailto:ufs@sjofartsverket.se)  
Publisher:  
Hydrographer Patrik Wiberg



## ANNOUNCEMENTS

\* 13935 (T)

Chart: 623, 6231

### Västervik. Gränsö Canal temporarily closed. July 10 2019.

Time: July 10, 2019, 1150 - 1400 LT.

Gränsö kanal is closed for navigation during stated time due to a swimming competition.

Gränsö kanal	57-46,12N	016-40,47E
--------------	-----------	------------

Not shown in ENC.

Bsp Kalmarsund 2014/s30, Bsp Ostkusten 2019/s52, s54

Länsstyrelsen Kalmar län. Publ. 27 juni 2019

\* 14089 (T)

Chart: 611

### Arholma. Swimrun competition. July 27.

Time: July 27, 2019.

The swimrun competition 'Amfibiemannen' is taking place in the area around the island 'Arholma' during stated time.

Mariners are requested to keep sharp lookout and to respect instructions from safety crew.

Arholma	59-51,0N	019-07,4E
---------	----------	-----------

<https://www.amfibiemannen.com/>

Not shown in ENC.

Bsp Stockholm N 2018/s08, s24, s61

Amfibiemannen Swimrun. Publ. 27 juni 2019

## NOTICES

### Northern Baltic

\* 13828

Chart: 611, 612

### Sweden. Northern Baltic. Furusundsleden. Ålandets grund. Buoyage.

Insert	port hand spar buoy	a)	59-40,683N	018-59,030E
Insert	east cardinal spar buoy	b)	59-40,965N	018-59,600E

Bsp Stockholm N 2018/s23, s25, s30

Sjöfartsverket. Publ. 27 juni 2019

\* 14094 (T)

Chart: 6141, 6142

### Sweden. Northern Baltic. Stockholm. Lilla Värtan. Lidingöbron. Works. New bridge. Restricted area.

Time: July 1, 2019 - July 31, 2023.

A new bridge, Lilla Lidingöbron, is planned to be built during the specified time.

The bridge is located north of the existing Lidingö bridges.

The work is done in stages, starting at Ropsten.

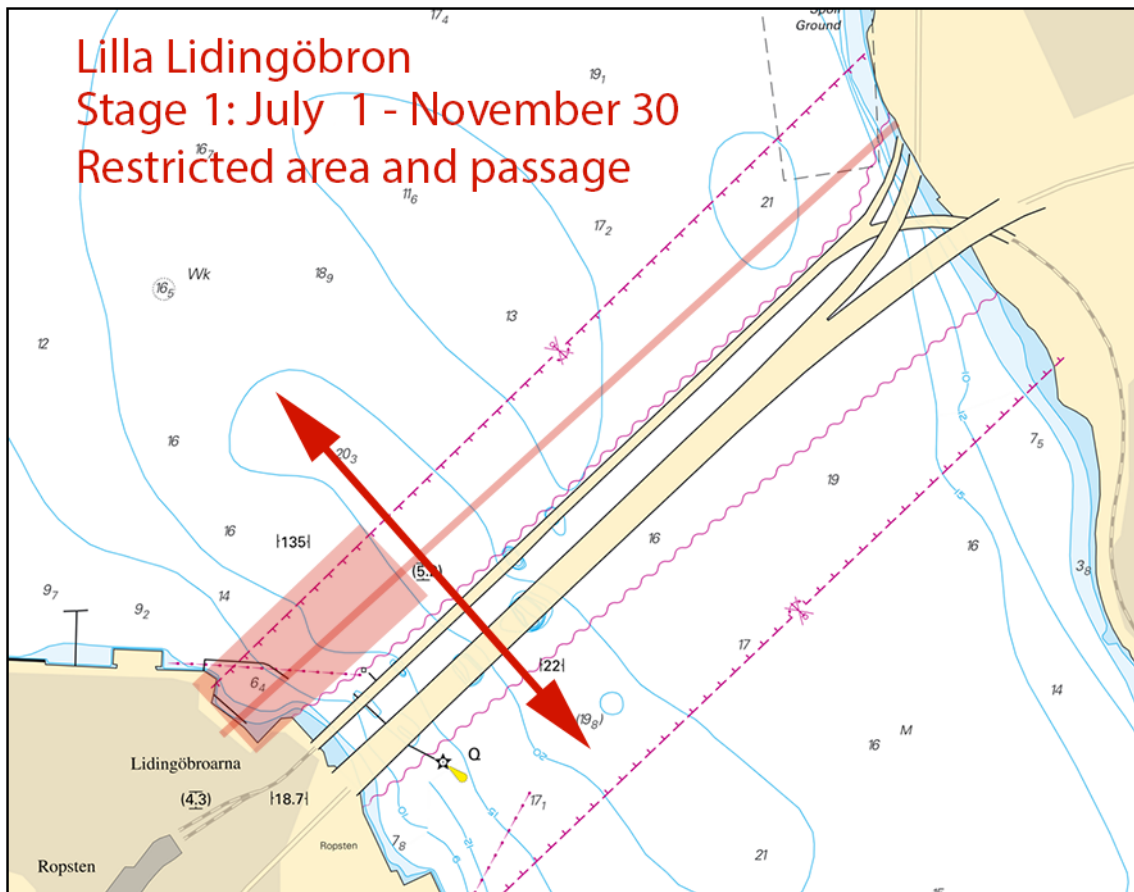
During the work, a restricted area is established and sea traffic will be redirected.

In the first stage, July 1 - November 30, 2019, a restricted area closest to Ropsten will be established. The area is marked with yellow special marks.

Passage takes place between bridge support three and four on the Nya Lidingöbron and in the northeast half of the span of Gamla Lidingöbron.

Lilla Lidingöbron, Restricted area	59-21,61N	018-06,41E
------------------------------------	-----------	------------

Bsp Stockholm M 2018/s09, s10, s12



Lilla Lidingöbron.

Implenia Sverige AB. Publ. 27 juni 2019

**\* 14123****Chart: 6144, 615****Sweden. Northern Baltic. Stockholms archipelago. Sandön. Rönnudden. Buoyage.**

Expired notices: 2019:760/14105

See: 2019:749/13914(P)

<b>Move</b>	starboard hand spar buoy from 59-16,362N 018-54,481E to	59-16,293N	018-54,534E
-------------	---------------------------------------------------------	------------	-------------

Sjöfartsverket. Publ. 21 juni 2019

**\* 14124****Chart: 6144, 615****Sweden. Northern Baltic. Stockholm archipelago. E of Sandhamn. Stången. Buoyage.**

Expired notices: 2019:760/14106

See: 2019:749/13914(P)

<b>Insert</b>	south cardinal spar buoy	59-15,999N	018-59,487E
---------------	--------------------------	------------	-------------

Sjöfartsverket. Publ. 21 juni 2019

**\* 14138 (T)****Chart: 6141, 6142****Sweden. Northern Baltic, Lake Mälaren and Södertälje Canal. Hammarby slussen. Lock temporarily closed for traffic. July 3, 2019 .**

Time: July 3, 2019. 0300 - 0500 LT.

Hammarby slussen are closed due to maintenance during the above stated time.

Hammarby slussen	59-18,20N	018-04,75E
------------------	-----------	------------

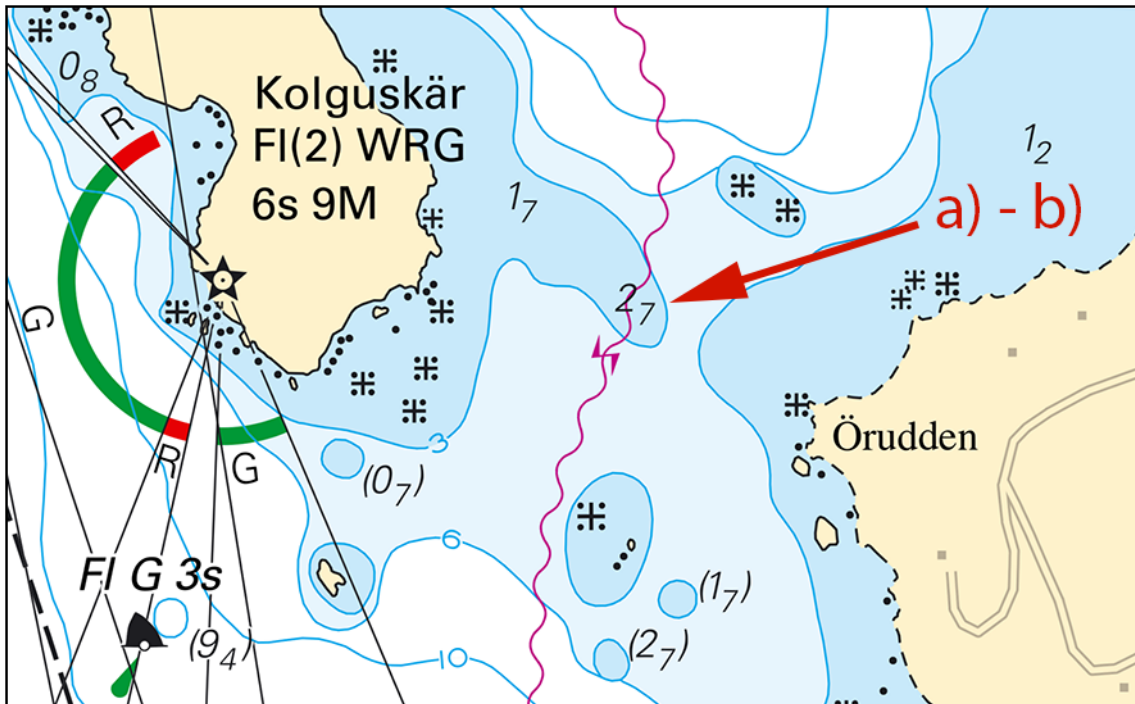
Not shown in ENC.

Bsp Mälaren - Hjälmaren 2016/s52, Bsp Stockholm M 2018/s06, s10

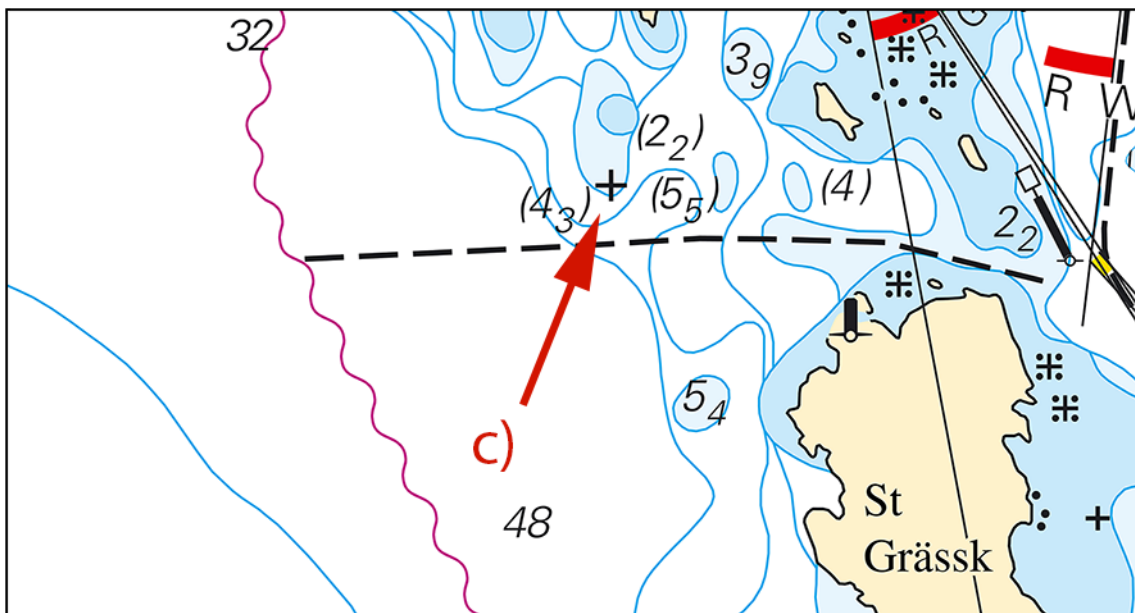


<b>Amend</b>	3 m depth contour	a)	58-48,087N	017-47,152E
<b>Replace</b>	3,2 with 2,7	b)	58-48,115N	017-47,130E
<b>Insert</b>	dangerous underwater rock with depth (4,3) and amend 6 m depth contour	c)	58-47,212N	017-49,789E
<b>Amend</b>	6 m depth contour	d)	58-47,027N	017-51,758E
<b>Replace</b>	(5) with (4,4)	e)	58-47,045N	017-51,746E
<b>Amend</b>	6 m depth contour	f)	58-47,636N	017-52,029E
<b>Amend</b>	6 m depth contour	g)	58-47,591N	017-52,259E
<b>Replace</b>	7,5 with 6,1	h)	58-47,816N	017-55,326E

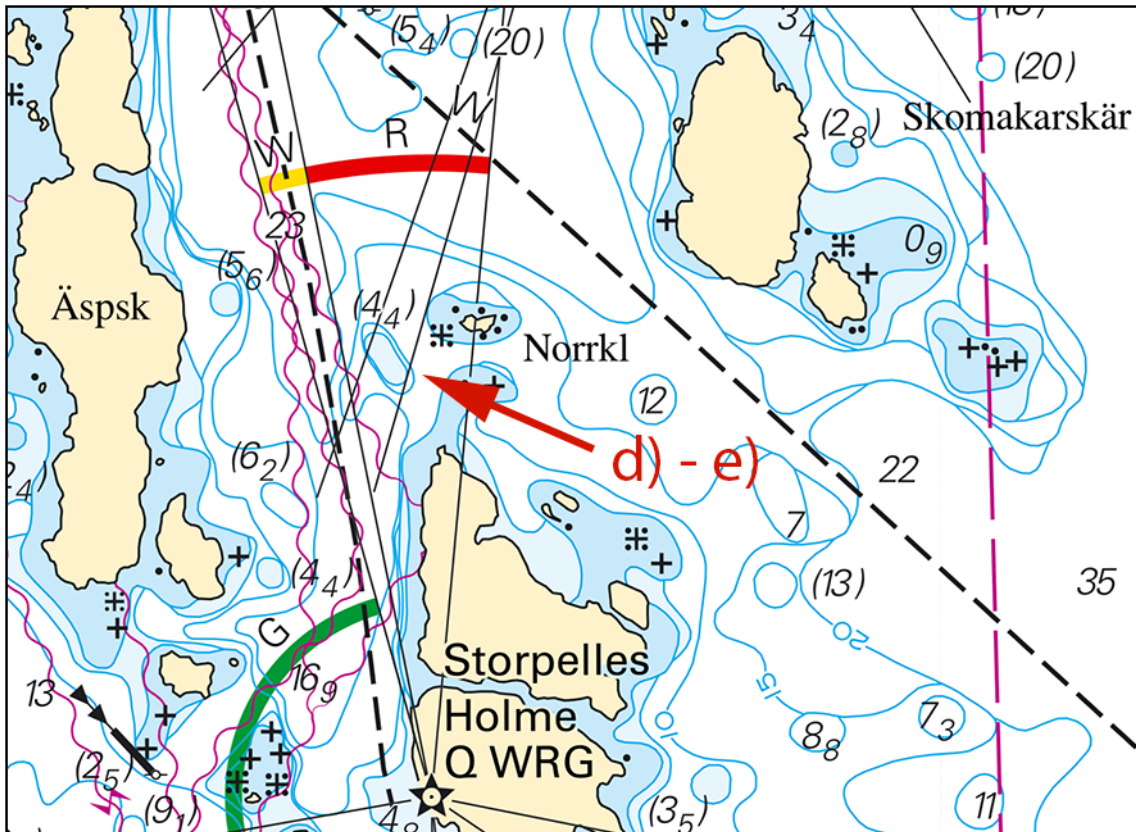
Bsp Mälaren - Hjälmaran 2016/s38, s39, Bsp Stockholm S 2018/s23, s24, s29, s33, s38, s39, s40



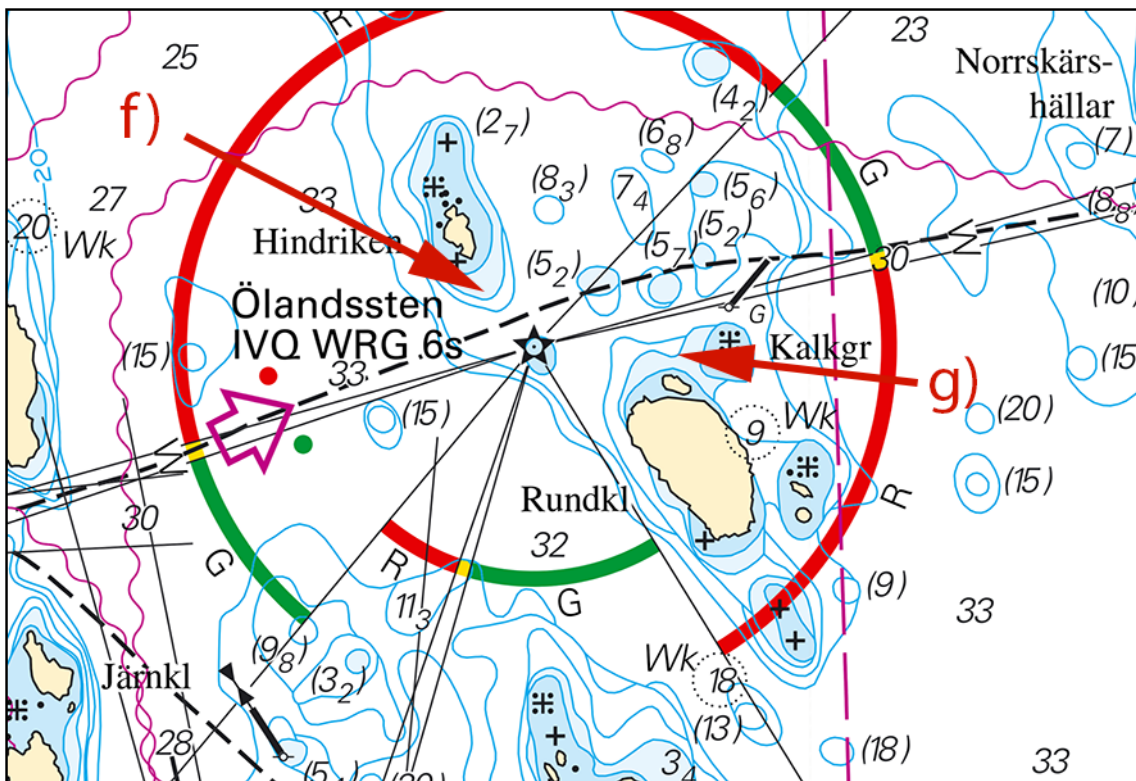
Depth, Örudden



Depth, Stora Grässkär



Depth, Åspeskär



Depth contours, Ölandsten





Bsp Sydkusten 2012/s27, s52

Transportstyrelsen, Norrköping. Publ. 27 juni 2019

The Sound

\* 14070

Chart: 922

Sweden. The Sound. Landskrona. Nyhamn. New bridge.

Insert	opening footbridge with 1,9 m vertical clearance	a)	55-52,10N	012-49,41E
--------	--------------------------------------------------	----	-----------	------------

Bsp Sydkusten 2012/s50



New bridge in Landskrona

Landskrona stad. Publ. 27 juni 2019

\* 14082 (T)

Chart: 8141, 921, 9211

Sweden. The Sound. Malmö. Västra Hamnen. Closed area. Sailrace.

Time: July 1 - 2. 0815 - 1800 LT.

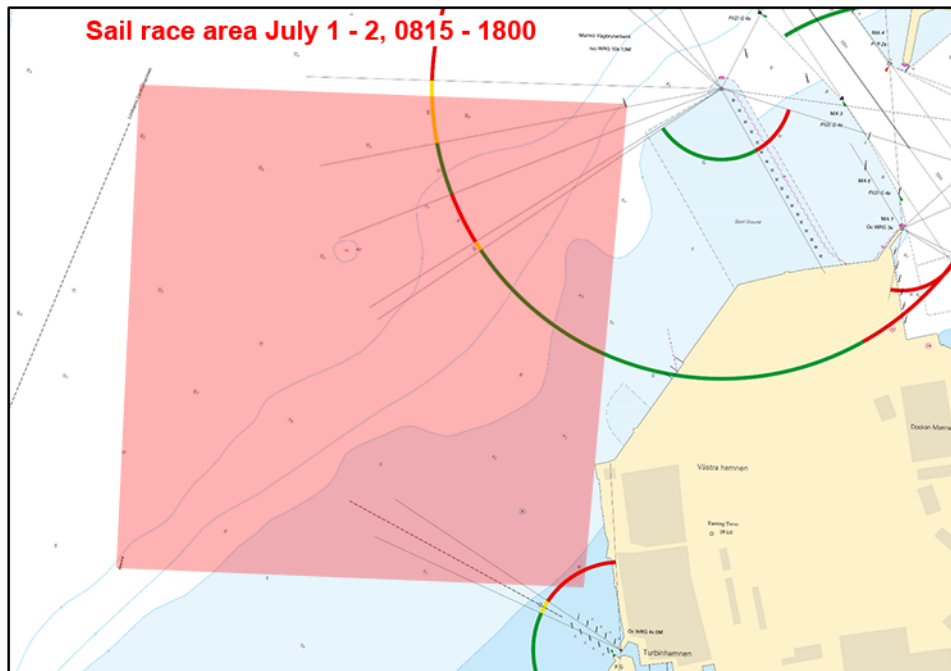
Area will be closed due to sailracing. See chartlet.

Area will be marked with bouys and securityboats will watch VHF CH 16.

Closed area a) - d)	a)	55-37,468N	012-57,029E
	b)	55-37,463N	012-58,308E
	c)	55-36,694N	012-58,190E
	d)	55-36,713N	012-56,944E

Not shown in ENC.

Bsp Sydkusten 2012/s17, s38, s39, s44, s46



Closed area

Länsstyrelsen Skåne. Publ. 27 juni 2019

**Kattegat**

\* 14121

Chart: 924

Sweden. Kattegat. Falkenberg. Falkenberg inre hamn. Turning area. Buoyage.

Insert	special purpose spar buoy with topmark	a)	56-53,741N	012-29,574E
Insert	special purpose spar buoy with topmark	b)	56-53,707N	012-29,634E

Bsp Västkusten S 2019/s27, s66

Falkenberg terminal ab. Publ. 27 juni 2019

\* 14122

Chart: 931, 932, 9321

Sweden. Kattegat. S of Tjörn. Marstrandsfjorden. Buoyage.

Replace	south cardinal spar buoy to south cardinal light spar buoy Q (6)+LFI 15	57-55,506N	011-35,501E
---------	-------------------------------------------------------------------------	------------	-------------

Bsp Västkusten S 2019/s14, s40, s42

Sjöfartsverket. Publ. 27 juni 2019

**Skagerrak**

\* 14132

Chart: 937

Sweden. Skagerrak. Strömstad. Ferry terminal. Buoyage.

Delete	west cardinal spar buoy	58-55,92N	011-10,14E
--------	-------------------------	-----------	------------

Bsp Västkusten N 2019/s09, s35

Sjöfartsverket. Publ. 27 juni 2019