

Notices to Mariners, SWEDEN Swedish Maritime Administration



Areas in Swedish Notices to Mariners



SJÖFARTSVERKET

Editorial office
Swedish Maritime Administration
Ufs
601 78 NORRKÖPING
Sweden
tel: 0771 630 605
e-mail: ufs@sjofartsverket.se
Publisher:
Hydrographer Patrik Wiberg

ANNOUNCEMENTS

* 14112

Chart: 135, 429, 9321

New print of charts. New edition of chart 135, 429 and 9321.

A new print of the following nautical charts are available from June 2019:

Chart	Edition
135	10.0 NEW EDITION
429	4.0 NEW EDITION
9321	10.0 NEW EDITION

A NEW EDITION is a print of an existing chart, containing changes significant to navigation which are not possible to fully describe in the Swedish NtM.

Sjöfartsverket, Norrköping. Publ. 20 juni 2019

NOTICES

Bay of Bothnia

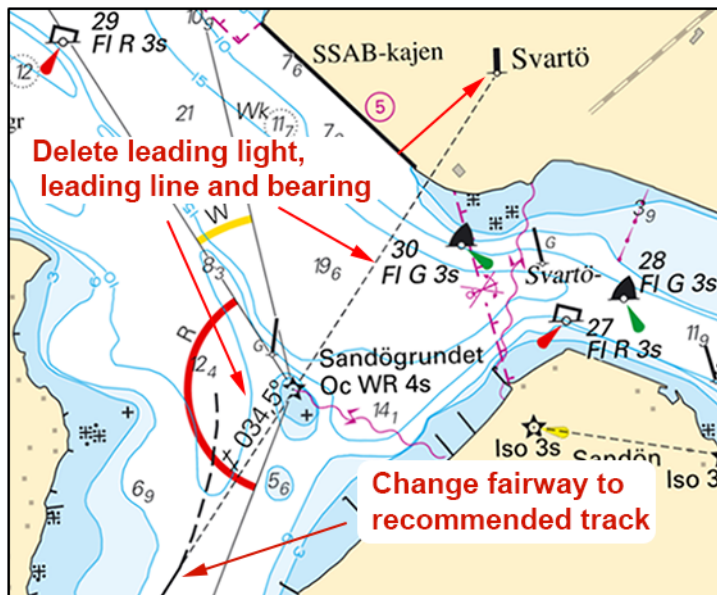
* 14077

Chart: 4101, 414

Sweden. Bay of Bothnia. Luleå. Svartön. SSAB-kajen. Svartö. Leading light withdrawn.

Delete	leading beacon 'Svartö'	a)	65-33,383N	022-12,442E
Delete	leading line 034,5° between a) - b)	b)	65-32,777N	022-11,442E
Amend	fairway to recommended track between b) - c)	c)	65-32,562N	022-11,094E

Bsp Bottenviken 2018/s05, s06, s26, s58



Luleå

Transportstyrelsen. Publ. 20 juni 2019

* 14102

Chart: 4101

Sweden. Bay of Bothnia. Luleå. Sandöfjärden. New leisure craft fairway. Buoyage. Rock awash. Fishing stakes.

Expired notices: 2019:748/13839(P)

A new leisure craft fairway is established in the approach to Luleå. Positions as listed.

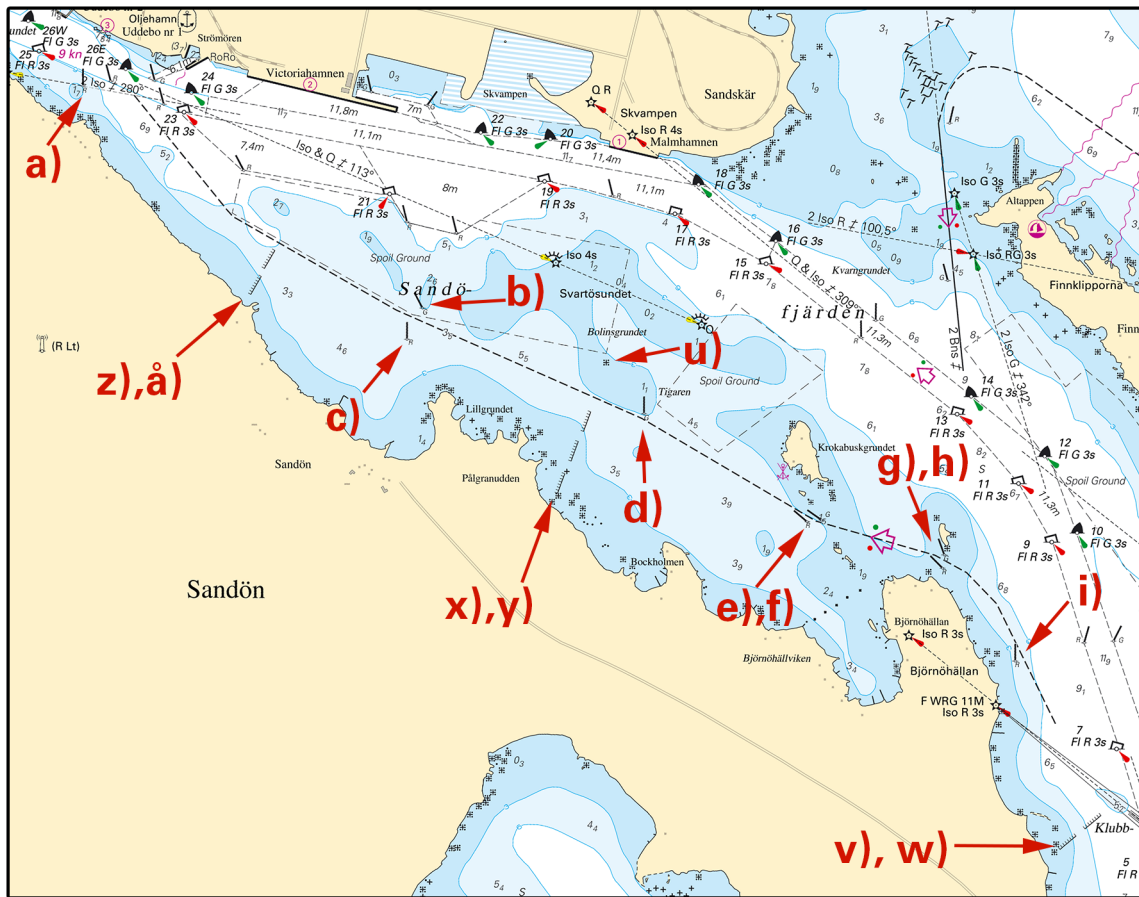
Insert	port hand spar buoy	a)	65-32,856N	022-13,600E
Insert	starboard hand spar buoy	b)	65-32,256N	022-15,834E
Insert	port hand spar buoy	c)	65-32,171N	022-15,733E
Insert	starboard hand spar buoy	d)	65-31,971N	022-17,289E
Insert	port hand spar buoy	e)	65-31,679N	022-18,361E
Insert	starboard hand spar buoy	f)	65-31,684N	022-18,455E
Insert	starboard hand spar buoy	g)	65-31,590N	022-19,261E
Insert	port hand spar buoy	h)	65-31,554N	022-19,250E
Insert	port hand spar buoy	i)	65-31,302N	022-19,728E

Insert	recommended track between j) - r)	j)	65-31,132N	022-19,994E
		k)	65-31,458N	022-19,604E
		l)	65-31,541N	022-19,411E
		m)	65-31,588N	022-19,206E
		n)	65-31,683N	022-18,421E
		o)	65-31,961N	022-17,263E
		p)	65-32,248N	022-15,669E
		q)	65-32,503N	022-14,584E
		r)	65-32,823N	022-13,947E
Insert	symbol of direction of buoyge	s)	65-31,626N	022-18,883E

Delete	rock awash	t)	65-32,077N	022-16,978E
Insert	rock awash	u)	65-32,110N	022-17,040E

Insert	fishing stake between v) - w)	v)	65-30,794N	022-20,032E
		w)	65-30,880N	022-20,277E
Insert	fishing stake between x) - y)	x)	65-31,761N	022-16,725E
		y)	65-31,971N	022-16,930E
Insert	fishing stake between z) - â)	z)	65-32,297N	022-14,706E
		â)	65-32,408N	022-14,848E

Bsp Bottenviken 2018/s58, s60, s61



Leisure craft fairway, Sandön

Sjöfartsverket. Publ. 20 juni 2019

Northern Baltic

* 13803

Chart: 616, 6163

Sweden. Northern Baltic. Stockholm archipelago. S of Dalarö. Buoyage.

Replace	starboard hand spar buoy with starboard hand light spar buoy Q G	a)	59-07,038N	018-25,128E
---------	--	----	------------	-------------

Bsp Stockholm M 2018/s42, s44, Bsp Stockholm S 2018/s06, s09

Sjöfartsverket. Publ. 20 juni 2019

* 13810

Chart: 611, 612

Sweden. Northern Baltic. Marö - Norra Ljusterö. Furusundsleden. Amended buoyage.

Amend	port hand spar buoy to port hand light spar buoy Q R	a)	59-42,426N	019-04,299E
Amend	starboard hand spar buoy to starboard hand light spar buoy Q G	b)	59-31,839N	018-32,404E

Bsp Stockholm N 2018/s23, s25, s27, s28, s30, s38, s39

Sjöfartsverket, Norrköping. Publ. 20 juni 2019

* 14087

Chart: 612

Sweden. Northern Baltic. Stockholm archipelago. Mjölkön. Renovation of ferryberth completed.

Expired notices: 2017:678/12655(T)

The renovation of the ferry berth on Mjölkön is now completed.

Ferry berth on Mjölkön	59-27,93N	018-25,11E
------------------------	-----------	------------

Bsp Stockholm N 2018/s38

Stockholm Betongkonsult. Publ. 20 juni 2019

* 14105

Chart: 6144, 615

Sweden. Northern Baltic. Stockholms archipelago. Sandön. Rönnudden. Buoyage.

See: 2019:749/13914(P)

Move	59-16,293N	018-54,534E
------	------------	-------------

Sjöfartsverket. Publ. 20 juni 2019

* 14106

Chart: 6144, 615

Sweden. Northern Baltic. Stockholm archipelago. E of Sandhamn. Stången. Buoyage.

See: 2019:749/13914(P)

Insert	59-15,999N	018-59,487E
--------	------------	-------------

Sjöfartsverket. Publ. 20 juni 2019

* 14116

Chart: 6144, 615

Sweden. Northern Baltic. Stockholms archipelago. S of Sandön. Ådan. Buoyage.

See: 2019:749/13914(P)

Move	port hand light buoy from 59-16,050N 018-54,395E to	59-16,034N	018-54,334E
------	---	------------	-------------

Bsp Stockholm M 2018/s31

Sjöfartsverket. Publ. 20 juni 2019

Lake Mälaren and Södertälje Canal

* 14104 (P)

Chart: 111, 113

Sweden. Lake Mälaren and Södertälje Canal. N of Strängnäs. Aspön. Selaön. Rokaströmmen. Segeröfjärden. Bouyage.

A new leisure craft fairway is being established. Positions as listed.

Insert	starboard hand spar buoy	a)	59-28,716N	017-08,788E
Insert	starboard hand spar buoy	b)	59-27,843N	017-06,258E
Insert	Starboard hand spar buoy	c)	59-27,672N	017-05,663E
Insert	Port hand spar buoy	d)	59-27,663N	017-05,666E
Insert	Starboard hand spar buoy	e)	59-27,664N	017-05,621E
Insert	Port hand spar buoy	f)	59-27,656N	017-05,624E
Insert	Port hand spar buoy	g)	59-27,610N	017-05,365E
Insert	starboard hand spar buoy	h)	59-27,607N	017-05,279E
Insert	port hand spar buoy	i)	59-27,584N	017-05,235E
Insert	Port hand spar buoy	j)	59-27,543N	017-05,031E
Insert	Starboard hand spar buoy	k)	59-27,510N	017-04,766E
Insert	port hand spar buoy	l)	59-27,478N	017-04,859E
Insert	Port hand spar buoy	m)	59-27,435N	017-04,037E
Insert	starboard hand spar buoy	n)	59-27,439N	017-03,844E
Insert	Port hand spar buoy	o)	59-27,407N	017-03,934E
Insert	Port hand spar buoy	p)	59-27,020N	017-03,457E
Insert	port hand spar buoy	q)	59-23,753N	017-07,299E
Insert	Starboard hand spar buoy	r)	59-23,678N	017-07,260E
Insert	Starboard hand spar buoy	s)	59-23,592N	017-07,256E

Bsp Mälaren - Hjälaren 2016/s06, s23, s26

Sjöfartsverket. Publ. 20 juni 2019

Central Baltic*** 14114****Chart: 71****Sweden. Central Baltic. E of Öland. Kårehamn Wind farm. Navigation lights back in normal operation.**

Expired notices: 2018:713/13273(T)

The light on the two of the wind turbines in Kårehamn wind farm is back in normal operation.

Wind turbine 8	a)	56-59,117N	017-00,686E
Wind turbine 12	b)	56-58,552N	017-01,666E

Bsp Kalmarsund 2014/s04, s05

*EON. Publ. 20 juni 2019***Southern Baltic***** 14120 (T)****Chart: 71****Sweden. Southern Baltic. E of Öland. NE of Segerstad. Underwater works. Buoys.**

Time: Until end of July 2019.

Diving operations in progress within the restricted area off Skärlövs hamn. A number of red buoys have been established in the area. Wide berth requested.

Restricted area NE of Segerstad	56-26,6N	016-42,0E
---------------------------------	----------	-----------

Not shown in ENC.

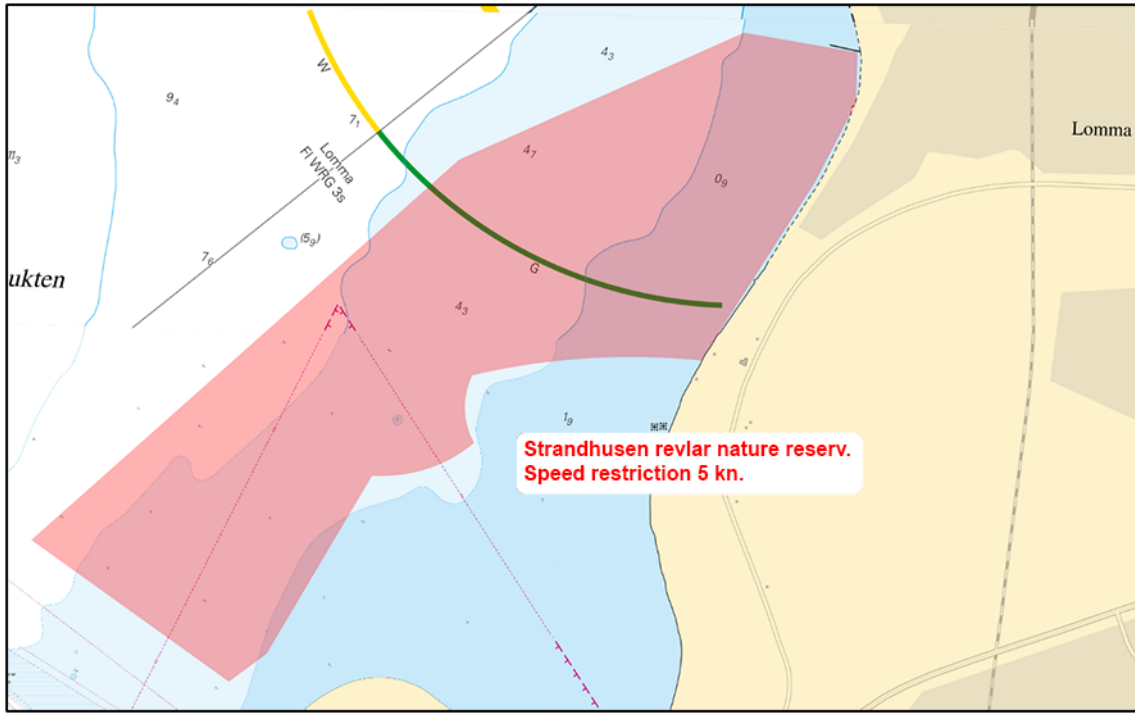
Bsp Kalmarsund 2014/s05

*Kalmar Länsmuseum. Publ. 20 juni 2019***The Sound***** 14084****Chart: 8141, 921****Sweden. The Sound. Lommabukten. Flädierrev. Strandhusens revlar. Nature reserv. Speed restriction.**

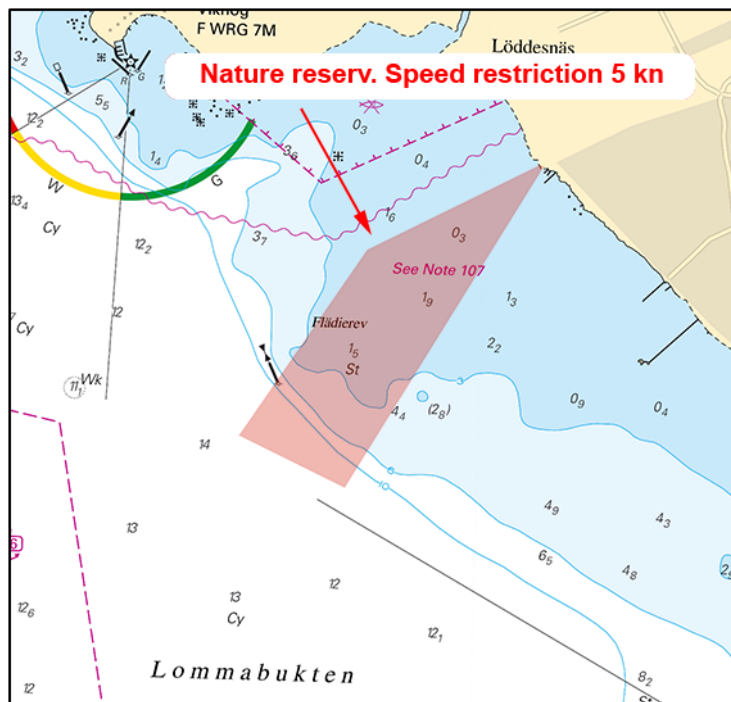
Two new nature reserves has been established in Lommabukten at Flädierrev and Strandhus revlar. See Chartlet. 5 knots speed restriction has been established in the nature reserves.

Insert	speed restriction 5 kn	55-42,30N	012-59,00E
Insert	speed restriction 5 kn	55-40,00N	013-03,00E

Bsp Sydkusten 2012/s16, s17, s39



Lommabukten



Lommabukten

Länsstyrelsen Skåne. Publ. 20 juni 2019

Lake Vänern and Trollhätte Canal

* 14052

Chart: 931

Sweden. Lake Vänern and Trollhätte Canal. Nordre älv. Flood barrage at Ormo. Overhead powercable removed.

Delete	overhead powercable between a) - b)	a)	57-50,38N	011-53,98E
		b)	57-50,37N	011-54,33E

Bsp Västkusten S 2019/s62

Sjöfartsverket. Publ. 20 juni 2019