

Notices to Mariners, SWEDEN Swedish Maritime Administration



Areas in Swedish Notices to Mariners



SJÖFARTSVERKET

Editorial office
Swedish Maritime Administration
Ufs
601 78 NORRKÖPING
Sweden
tel: 0771 630 605
e-mail: ufs@sjofartsverket.se
Publisher:
Hydrographer Patrik Wiberg

Affected charts and Notices

Underrättelser för sjöfarande (Ufs) is an official Swedish publication which provides information pertaining to shipping in the Baltic Sea Area and Kattegat, as well as Skagerrak east of a line drawn between Hanstholm and Lindesnes.

The information on foreign waters is largely confined to significant occurrences which may affect Swedish charts. Ufs is thus wholly unsuited for the purpose of keeping BA-charts and/or other national charts updated.

An asterisk (*) in front of the number denotes that the notice is based on information obtained from Swedish source material and that the details contained therein affect Swedish waters.

When the letter (P) is adjacent to the notice number it serves as an indication that the notice is of a preliminary nature. Such notices will later be replaced by corresponding ones containing definitive information.

Similarly, when the letter (T) is placed adjacent to the notice number it denotes that the notice is of a temporary nature. In case no period of validity is given, this type of notice will be rendered invalid either when a new Temporary Notice is promulgated or if pertaining conditions cease to exist.

Bearings are true and given clockwise from 000° to 360° and, when given in conjunction with lights, indicate a direction from seaward.

Featured chartlets are primarily intended to simplify chart correction work and are not always true to scale. In general, they show the largest charted scale available for respective area.

Responsibility for the factual content published in Ufs rests with the informant.

Chart corrections and other information attributed to a specific geographical area can be found under NOTICES. Other information is found under ANNOUNCEMENTS, starting on pg. 3.

The periodical Ufs is normally published every Thursday and can be downloaded as a PDF-file from the homepage of the Swedish Maritime Administration. Note that as the file is automatically generated from a database unintentional page breaks may occur at random.

Further information on the use of Ufs can be found in the annual publication *Ufs A*.

Reporting dangers and errors

All observations concerning floating aids to navigation, unlit beacons and lights, objects adrift or any other occurrence which may have a detrimental impact on safety at sea are to be forwarded to Sweden Traffic at the earliest possible opportunity.

Call: Sweden Traffic

VHF Channel: Appropriate working channel

Phone: +46 771 630 685 (24/7)

E-mail: swedentraffic@sjofartsverket.se

Affected charts	Notice no	Sign
5	14031 (T)	
6	14041 (T)	
7	14041 (T)	
53	14031 (T)	
61	13999	
61	14004	
61	14031 (T)	
61	14041 (T)	
62	14041 (T)	
71	13982 (T)	
71	14041 (T)	
74	13982 (T)	
74	14041 (T)	
74	14044 (T)	
83	13982 (T)	
83	14041 (T)	
92	14044 (T)	
111	13947	
619	13999	
619	14004	
619	14005	
619	14031 (T)	
731	14041 (T)	
741	13982 (T)	
921	14034	
921	14044 (T)	
922	14044 (T)	
1353	14039 (T)	
5331	14024	
6141	14038 (T)	
6142	13145	
6142	14038 (T)	
6144	13984	
6145	13986	
6211	14042	
7411	13982 (T)	
8141	14044 (T)	
9211	14044 (T)	

ANNOUNCEMENTS

* 14040

New reference system for sea level, nautical charts and warnings. BSCD2000 / RH 2000.

Expired notices: 2019:754/13917

See: 2018:716/13140

As of June 3, 2019, the Swedish national height system 'Rikets Höjdsystem 2000', or RH 2000 (international name 'Baltic Sea Chart Datum 2000', BSCD2000) will constitute the reference level for observations and forecasts of the water level in Swedish waters.

The zero level in RH 2000 is fixedly linked to land, and is not affected by land uplift, changes in sea level or geographical variations.

The change means that observations, forecasts, and warnings in the Swedish Maritime Administration's and Swedish Meteorological and Hydrological Institute's (SMHI) viewing services from 3 June 2019, or soon thereafter, refer to the new reference level and no longer to the 'mean sea level'.

The Swedish Maritime Administration is gradually adapting the charts to the new reference system. This is a time consuming process which will take several years to complete. During the transition period, it is important to know which reference level is used in the different charts. If the text 'Baltic Sea Chart Datum 2000', or 'BSCD2000' is printed in the chart, the update has been performed.

More information: www.sjofartsverket.se/RH2000 and www.smhi.se

www.sjofartsverket.se/RH2000

www.smhi.se

SMHI och Sjöfartsverket. Publ. 15 maj 2019

NOTICES

Sea of Bothnia

* 14024

Chart: 5331

Sweden. Sea of Bothnia. Ala. Buoyage.

Insert	starboard spar buoy without topmark.	61-13,019N	017-10,600E
--------	--------------------------------------	------------	-------------

Bsp Bottenhavet S 2013/s41

Sjöfartsverket. Publ. 16 maj 2019

Sea of Åland and Archipelago Sea

* 13999

Chart: 61, 619

Finland. Sea of Åland and Archipelago Sea. Eckerö. Töllingbådan-Sälskär. Fairways and buoyage.

1. Amended fairway.

Insert	fairway with a maximum authorized draught of 6,1 m between a) - h).	Delete former track.	a)	60-09,696N	019-28,070E
			b)	60-16,073N	019-27,140E
			c)	60-16,270N	019-27,280E
			d)	60-16,360N	019-27,650E
			e)	60-16,380N	019-29,230E
			f)	60-16,460N	019-29,600E
			g)	60-16,600N	019-29,750E
			h)	60-16,700N	019-29,800E

2. Amended fairway.

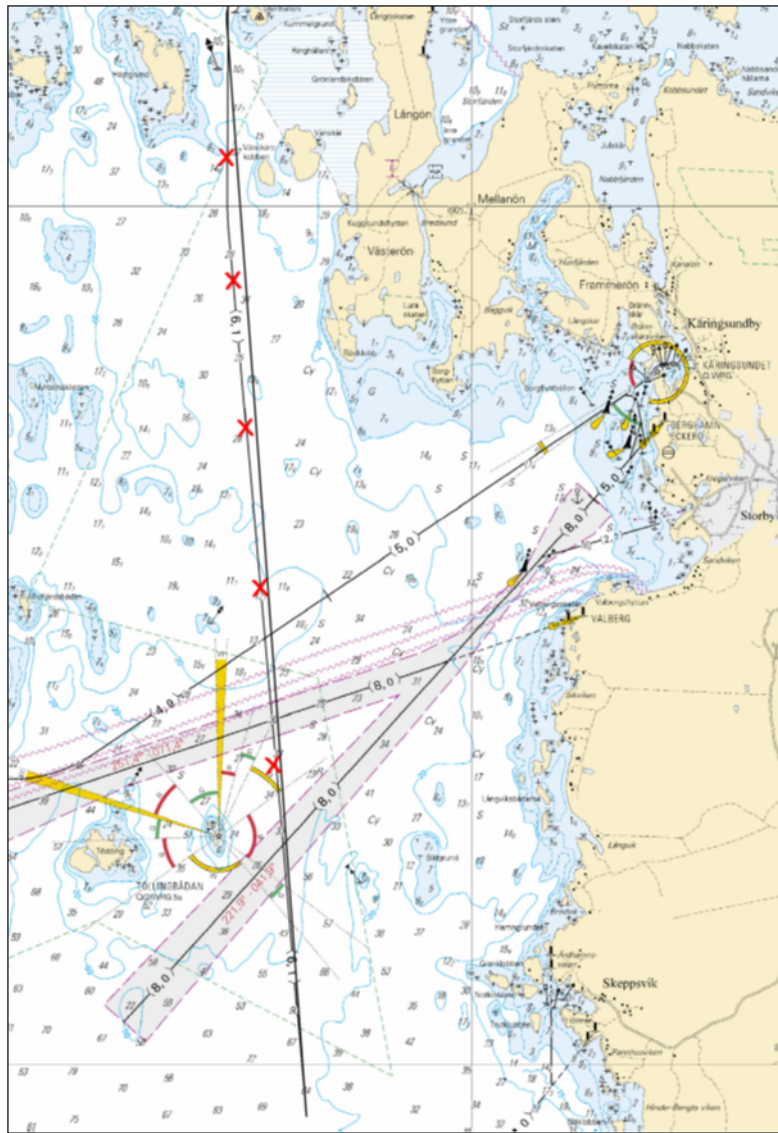
Insert	fairway with a maximum authorized draught of 6,1 m between a) - c).	Delete former track.	a)	60-20,301N	019-30,620E
			b)	60-24,361N	019-27,522E
			c)	60-29,043N	019-27,430E

3. Buoyage.

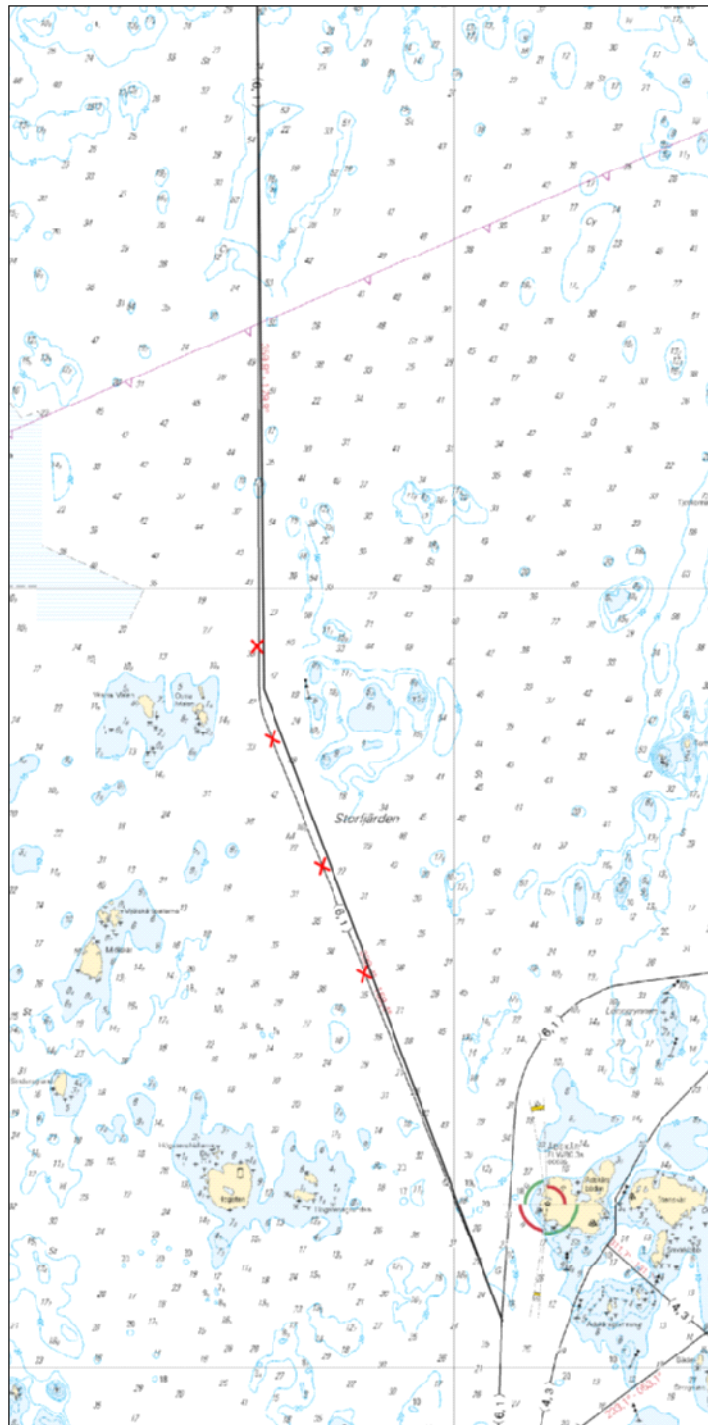
Insert	east cardinal spar buoy.	a)	60-15,797N	019-27,041E
Insert	west cardinal spar buoy.	b)	60-16,127N	019-27,237E
Move	north cardinal spar buoy from c) to d).	c)	60-16,310N	019-27,610E
		d)	60-16,315N	019-27,564E
Insert	south cardinal spar buoy.	e)	60-16,411N	019-28,192E
Move	north cardinal spar buoy from f) to g).	f)	60-16,330N	019-28,410E
		g)	60-16,350N	019-28,404E
Move	south cardinal spar buoy from h) to i).	h)	60-16,430N	019-29,000E
		i)	60-16,401N	019-29,057E
Move	south cardinal spar buoy from j) to k).	j)	60-16,460N	019-29,300E
		k)	60-16,453N	019-29,376E
Delete	leading beacons and associated leading line at position l) and m).	l)	60-16,441N	019-30,000E
		m)	60-16,476N	019-30,773E
Move	east cardinal spar buoy from n) to o).	n)	60-16,560N	019-29,520E
		o)	60-16,622N	019-29,589E
Move	east cardinal spar buoy from p) to q).	p)	60-18,310N	019-30,200E
		q)	60-18,194N	019-30,220E

The amendments will be carried out in May.

Bsp Stockholm N 2018/s06, s07, s46, s47, s48, s49, s50, s52



Töllingbådan-Sälskär. Image 1.



Töllingbådan-Sälskär. Image 3.

Finnish NtM 2019:12/88. Publ. 15 maj 2019

* 14004

Chart: 61, 619

Finland. Sea of Åland and Archipelago Sea. Eckerö. Hammarland. Finbo. Fairway and buoyage.

1. Amended fairway.

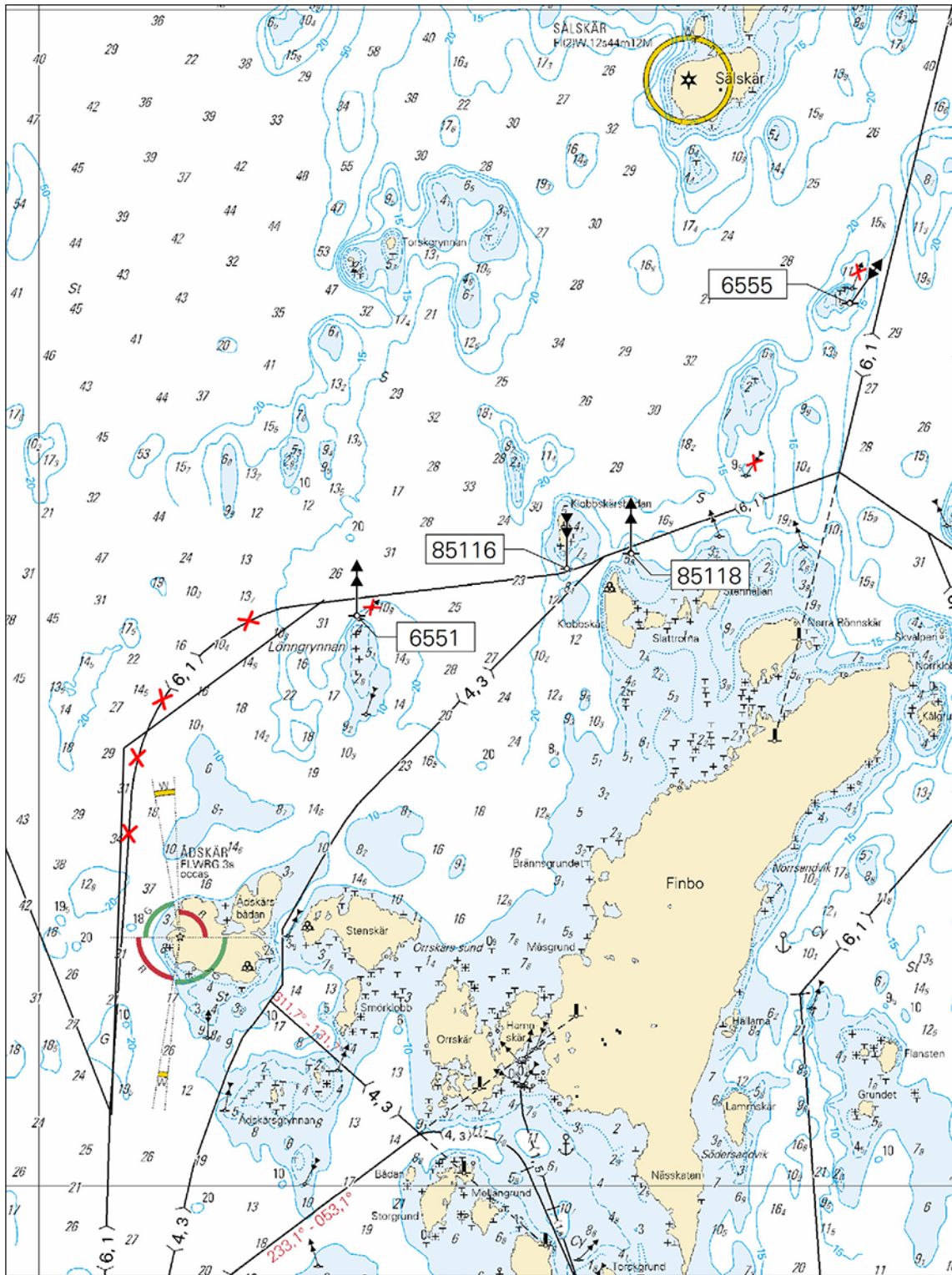
Insert	fairway with a maximum authorized draught of 6,1 m between a) - c)	Delete former track.	a)	60-20,301N	019-30,620E
			b)	60-21,861N	019-30,726E
			c)	60-22,492N	019-32,443E

2. Buoyage.

Move	north cardinal spar buoy from a) to b).	a)	60-22,410N	019-32,750E
		b)	60-22,425N	019-32,718E
Insert	south cardinal spar buoy.	c)	60-22,626N	019-34,520E
Insert	north cardinal spar buoy.	d)	60-22,690N	019-35,067E
Delete	south cardinal spar buoy.	e)	60-23,019N	019-36,055E
Move	east cardinal spar buoy from f) to g).	f)	60-23,810N	019-36,970E
		g)	60-23,752N	019-36,948E

The amendments will be carried out in May.

Bsp Stockholm N 2018/s06, s07, s48, s49



Hammarland, Finbo.

Finnish NtM 2019:12/89. Publ. 15 maj 2019

* 14005

Chart: 619

Finland. Sea of Åland and Archipelago Sea. Eckerö. Finbo. Farways and buoyage.

1. Amended fairway.

Insert	fairway with maximum authorized draught of 6,1 m between a) - d).	Delete former track.	a)	60-20,816N	019-36,519E
			b)	60-21,685N	019-37,981E
			c)	60-22,379N	019-38,127E
			d)	60-23,035N	019-36,855E

2. Amended fairway.

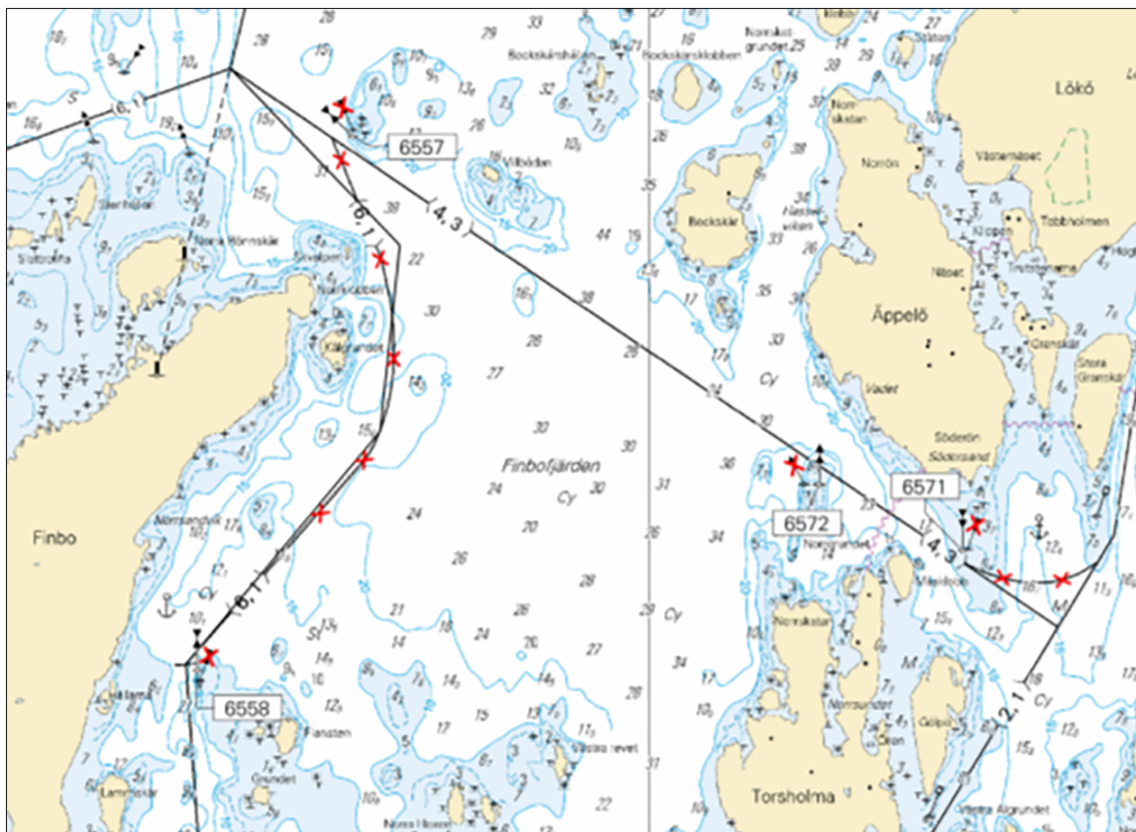
Insert	fairway with a maximum authorized draught of 4,3 m between a) - b).	Delete former track.	a)	60-20,955N	019-43,077E
			b)	60-21,190N	019-42,380E

3. Buoyage.

Move	west cardinal spar buoy from a) to b).	a)	60-20,760N	019-36,620E
		b)	60-20,792N	019-36,612E
Move	west cardinal spar buoy from c) to d).	c)	60-22,810N	019-37,780E
		d)	60-22,783N	019-37,777E
Move	north kardinal spar buoy from e) to f).	e)	60-21,490N	019-41,170E
		f)	60-21,485N	019-41,287E
Move	south kardinal spar buoy from g) to h).	g)	60-21,250N	019-42,410E
		h)	60-21,240N	019-42,362E

The amendments will be carried out in May.

Bsp Stockholm N 2018/s06, s48, s49



Finbo.

Finnish NtM 2019:12/90. Publ. 15 maj 2019

* 14015

Chart:

Finland. Sea of Åland and Archipelago Sea. Finbo. Fairways and buoyage.

1. Amended fairway.

Amend	maximum authorized draught from 1,5 m to 1,8 m on the fairway between a) - b).	a)	60-19,906N	019-34,406E
		b)	60-20,167N	019-34,232E

2. Fairway deleted.

Delete	fairway with maximum authorized draught of 1,5 m between a) - d).	a)	60-20,167N	019-34,232E
		b)	60-20,297N	019-34,147E
		c)	60-20,523N	019-34,101E
		d)	60-20,611N	019-34,338E

3. Buoyage.

Delete	west cardinal spar buoy.	a)	60-20,420N	019-34,134E
Delete	east cardinal spar buoy.	b)	60-20,434N	019-34,108E
Delete	north cardinal spar buoy.	c)	60-20,525N	019-34,117E
Delete	north cardinal spar buoy.	d)	60-20,546N	019-34,175E
Delete	south cardinal spar buoy.	e)	60-20,582N	019-34,256E

4. Fairway deleted.

Delete	fairway with maximum authorized draught 3,7 m between a) - b).	a)	60-19,554N	019-34,640E
		b)	60-20,070N	019-34,180E

5. Fairway deleted.

Delete	fairway with maximum authorized draught 4,3 m between a) - c).	a)	60-20,070N	019-34,180E
		b)	60-20,200N	019-33,900E
		c)	60-20,223N	019-33,256E

6. Fairway added.

Insert	fairway with maximum draught 4,3 m between a) - b).	a)	60-20,167N	019-34,232E
		b)	60-20,223N	019-33,256E

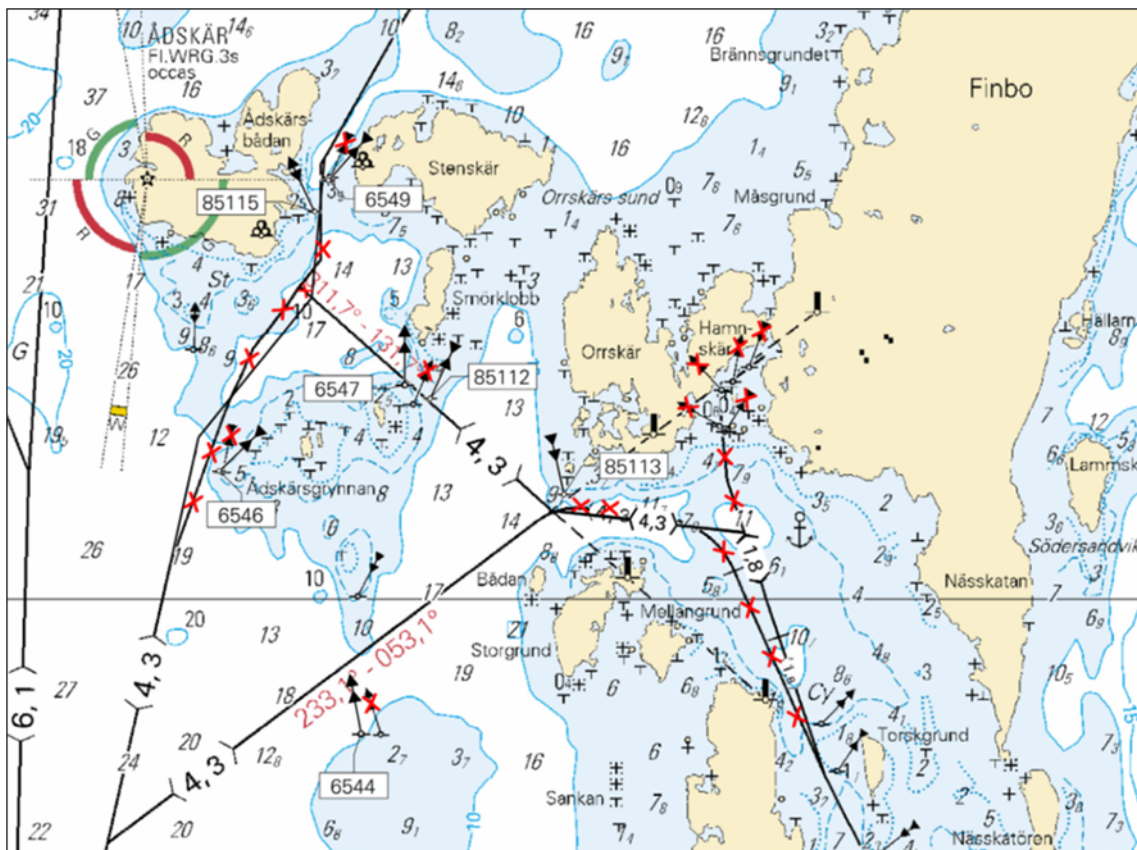
7. Fairway added.

Insert	fairway with maximum authorized draught 4,3 m between a) - d).	a)	60-20,100N	019-31,330E
		b)	60-20,408N	019-31,467E
		c)	60-20,759N	019-32,041E
		d)	60-21,110N	019-32,105E

8. Buoyage.

Insert	south cardinal spar buoy.	a)	60-20,265N	019-33,323E
Insert	west cardinal spar buoy.	b)	60-20,506N	019-32,638E
Move	north cardinal spar buoy from c) to d).	c)	60-20,490N	019-32,560E
		d)	60-20,539N	019-32,514E
Insert	east cardinal spar buoy.	e)	60-20,976N	019-32,056E
Move	west cardinal spar buoy from f) to g).	f)	60-21,060N	019-32,140E
		g)	60-21,055N	019-32,123E
Move	west cardinal spar buoy from h) to i).	h)	60-20,320N	019-31,590E
		i)	60-20,323N	019-31,566E
Move	north cardinal spar buoy from j) to k).	j)	60-19,660N	019-32,390E
		k)	60-19,660N	019-32,290E

The amendments will be carried out in May.
Bsp Stockholm N 2018/s49



Finbo

Finnish NtM 2019:12/91. Publ. 15 maj 2019

* 14031 (T)

Chart: 5, 53, 61, 619

Sweden. Sea of Åland and Archipelago Sea. Södra Kvarken. TSS North Åland Sea. Light and racon not operational.

Time: Until further notice
Light 'Södra Kvarken' is unlit. Racon is not operational.

Light 'Södra Kvarken' Fl(2) 6s	60-25,68N	019-04,98E
--------------------------------	-----------	------------

Adm. LoL C6287
Bsp Stockholm N 2018/s06

Sjöfartsverket. Publ. 14 maj 2019

Northern Baltic

* 13145

Chart: 6142

Sweden. Northern Baltic. Vaxholm. Kastellet. Cable ferry. Amended note.

	Vaxholm	a)	59-24,15N	018-21,42E	
Replace	note 217				chart 6142, Bsp Stockholm M 2018/p56, Bsp Stockholm N 2018/63

Bsp Stockholm M 2018/s56, Bsp Stockholm N 2018/s63

Note 217
CABLE FERRY VAXHOLM - TRAFFIC RESTRICTION
Depth above cables: Max depth = 5,1 m in the buoyed recommended track when the cable ferry is moored. The ferry line must not be crossed when the ferry is showing yellow flashing light. Vessels of a length < 12 m are not allowed to pass through the sound west of Vaxholm citadel between May 15 and September 30.

LINFÄRJA VAXHOLM - TRAFIKRESTRIKTION
Djup över vajrar: Största vajerdjup = 5,1 m i den markerade farleden när linfärjan är förtöjd. Färjeleden får inte passeras då färjan visar gult blyxtljus. Fartyg med längd under 12 m får inte framföras i sundet väst om Vaxholms kastell under perioden 15 maj - 30 sept.

note217

Trafikverket och Sjöfartsverket. Publ. 15 maj 2019

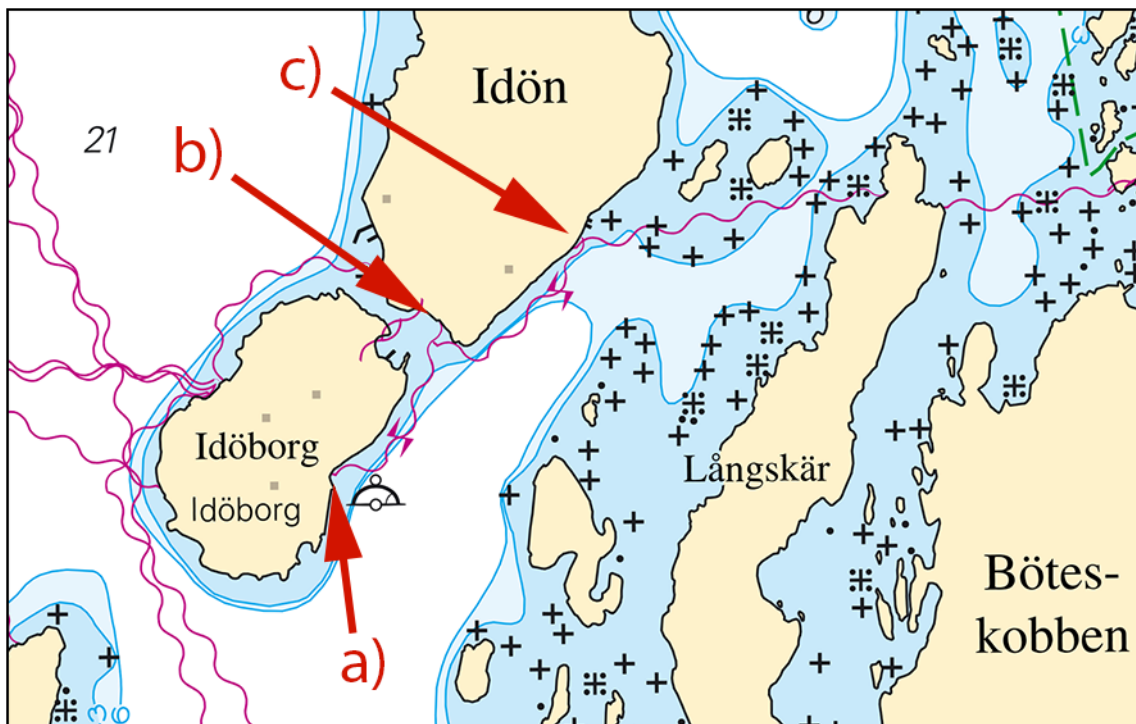
* 13984

Chart: 6144

Sweden. Northern Baltic. NE of Nämdö. Idön. Submarine power cables.

Insert	submarine power cable between a) - b)	a)	59-12,295N	018-45,694E
Insert	submarine power cable between b) - c)	b)	59-12,405N	018-45,848E
		c)	59-12,466N	018-46,050E

Bsp Stockholm M 2018/s30, s38



Submarine power cables. Idön.

Landers Kraft & Ljusteknik AB. Publ. 16 maj 2019

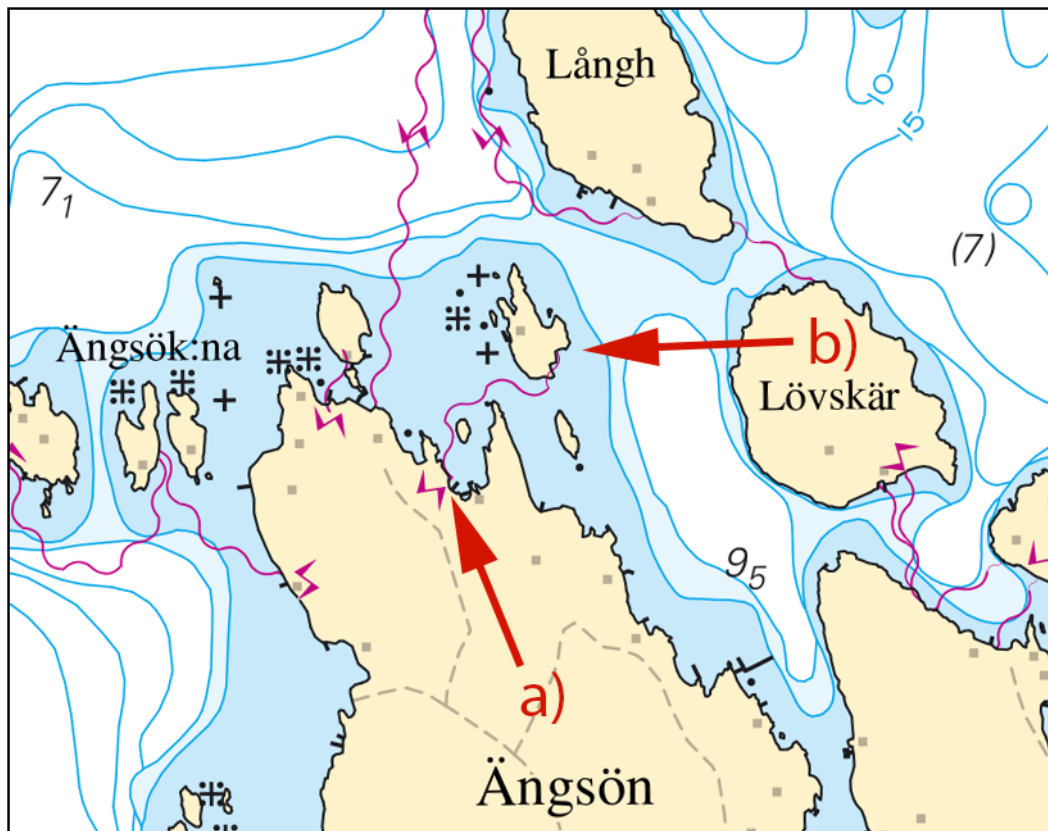
* 13986

Chart: 6145

Sweden. Northern Baltic. Ångsön. Submarine power cable.

Insert	submarine power cable between a) - b)	a)	59-12,105N	018-26,535E
		b)	59-12,191N	018-26,675E

Bsp Stockholm M 2018/s34



Submarine power cable. Ångsön.

Landers Kraft & Ljusteknik AB Publ. 16 maj 2019

* 14038 (T)

Chart: 6141, 6142

Sweden. Northern Baltic. Stockholm. Djurgården. Fjäderholmarna. Search and rescue exercise. May 22, 2019.

Time: May 22, 1000 - 1700 LT.

Search and rescue exercise is taking place by Djurgården and Fjäderholmarna during the stated time.

Mariners are requested to pass with caution.

Contact exercise manager: +46 733 577 504

Djurgården	59-19,5N	018-07,1E
Fjäderholmarna	59-19,8N	018-10,4E

Not shown in ENC.

Bsp Mälaren - Hjälmarén 2016/s53, Bsp Stockholm M 2018/s07, s09, s10, s11

Safetygruppen. Publ. 15 maj 2019

* 14041 (T)

Chart: 6, 61, 62, 7, 71, 731, 74, 83

Sweden. Northern Baltic, Central Baltic, South-Eastern Baltic, Southern Baltic. Inspection of gas pipelines (Nord Stream 1) in Swedish waters. Spring - summer 2019.

Time: Spring - summer 2019.

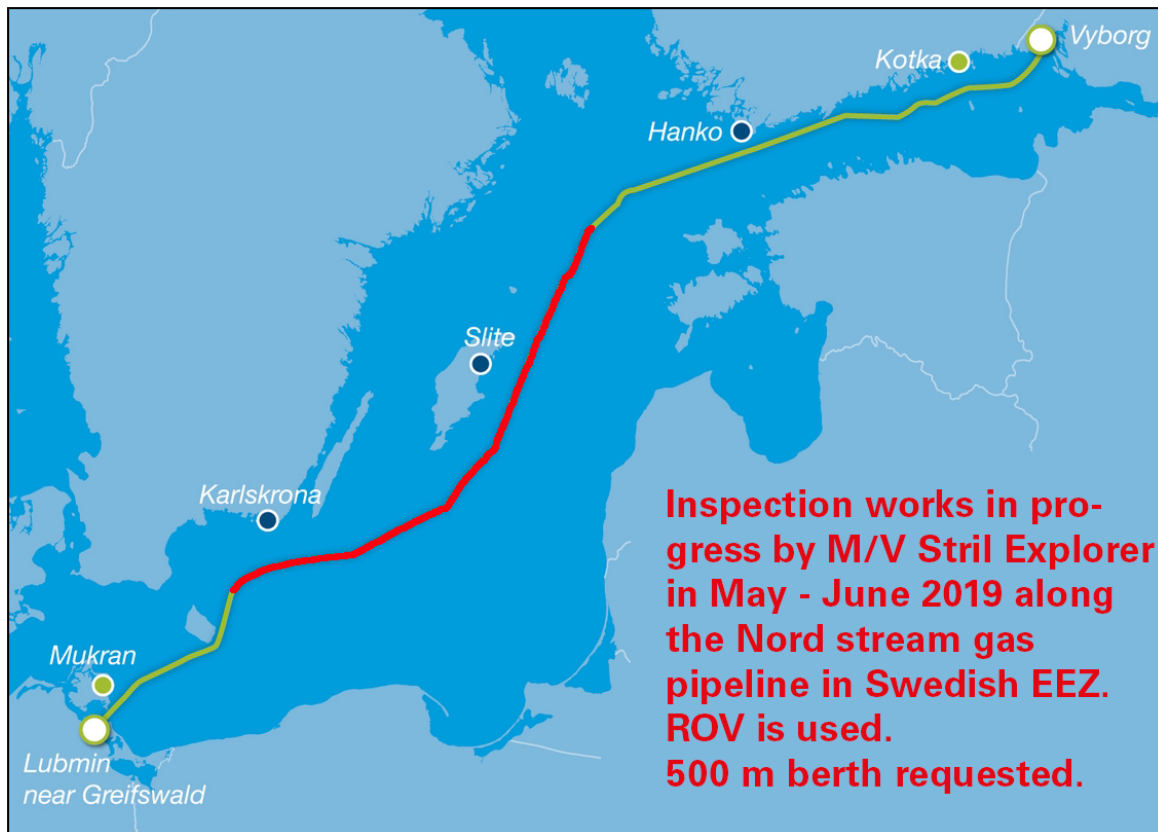
Inspection of the Nord Stream gas pipelines in progress in SW direction on Swedish waters between given positions.

The works is performed by 'STRIL EXPLORER/LAZT7' and includes survey by means of ROV.

500 m berth requested.

Boundary Sweden-Finland (NE of Gotska Sandön)	a)	58-51,3N	020-28,5E
Boundary Sweden-Denmark (S of Utklippan)	b)	55-32,4N	015-42,8E

Not shown in ENC.



Inspection of pipelines

Nord Stream AG. Publ. 15 maj 2019

* 14042

Chart: 6211

Sweden. Northern Baltic. Port of Oxelösund. Amendments to depths.

See: 2019:754/13997

Error in previously published NtM 13997, see below for correct positions.

Amend	(5,9) to (5,2)	k)	58-40,630N	017-08,295E
Insert	depth at berth (9,3)	l)	58-40,586N	017-08,164E

Bsp Ostkusten 2015/s21, Bsp Ostkusten 2019/s21

Sjöfartsverket. Publ. 16 maj 2019

Lake Mälaren and Södertälje Canal

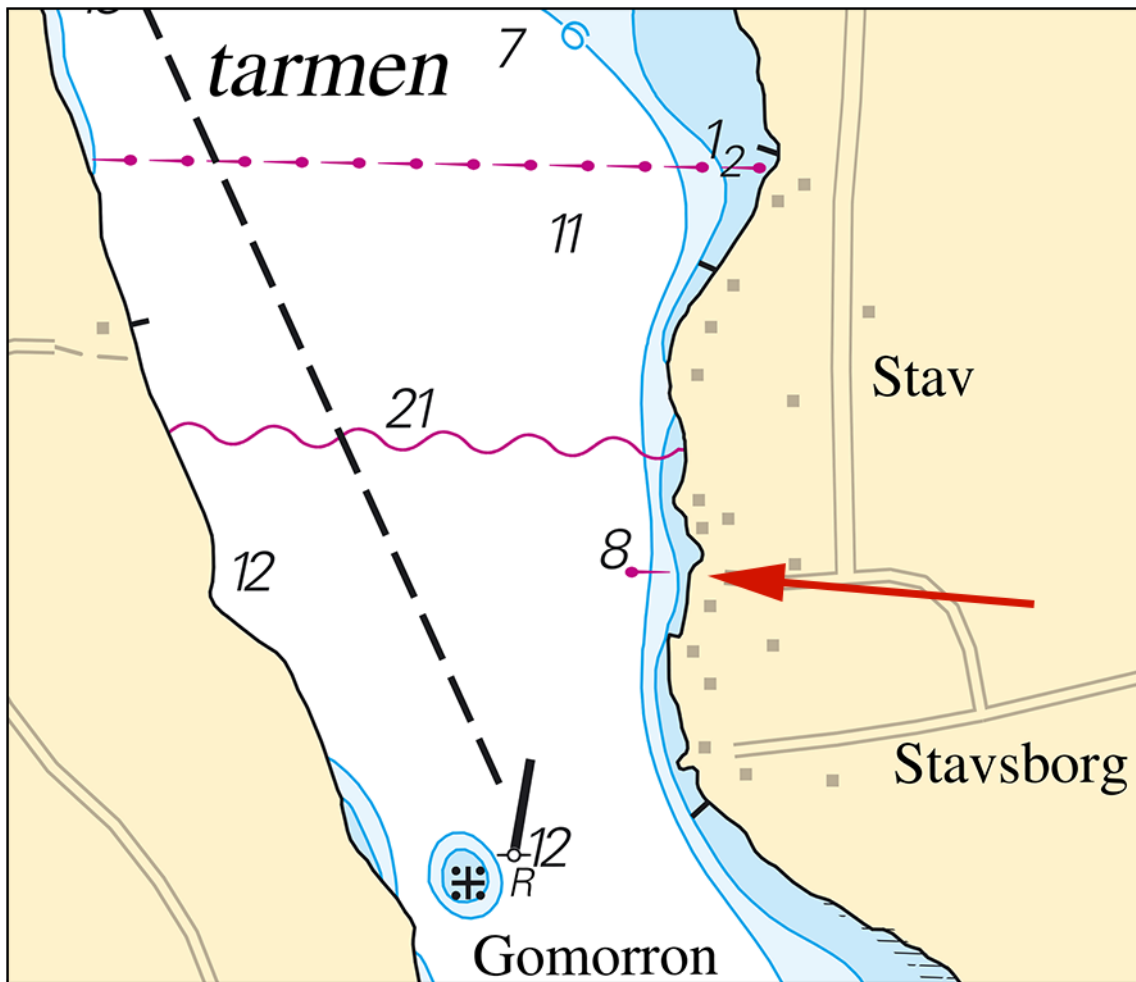
* 13947

Chart: 111

Sweden. Lake Mälaren and Södertälje Canal. Färingsö. Långtarmen. Stavsborg. Pipeline.

Insert	pipeline between a) - b)	a)	59-23,63N	017-37,34E
		b)	59-23,63N	017-37,18E

Bsp Mälaren - Hjälmaran 2016/s28, s48



Pipeline. Stavsborg.

Sjöfartsverket. Publ. 16 maj 2019

Southern Baltic

* 13982 (T)

Chart: 71, 74, 741, 7411, 83

Sweden. Southern Baltic. Karlskrona. W of Utklippan. Blast warning. May 29 2019.

Time: May 29 2019, 1000 - 1500 LT.

Swedish armed forces conducting underwater blasting. Safe distance 1852 m for vessels and for divers and swimmers 3500 m.

Contact: VHF CH 16 or telephone: +46 31 692 805.

Excercise area R63E	a)	56-00,00N	015-33,00E
	b)	56-00,00N	015-37,00E
	c)	55-57,58N	015-37,00E
	d)	55-57,58N	015-33,00E

Not shown in ENC

Bsp Hanöbukten 2018/s05, s06, s39

Försvarsmakten. Publ. 16 maj 2019

* 14034

Chart: 921

Sweden. Southern Baltic, The Sound. Falsterbo. Falsterbokanalen. Bridge opening hours.

	Bridge Falsterbobron	55-24,60N	012-56,08E	
Replace	Note 246			chart 921, small craft chart Sydusten 2012 s.52

New opening hours of bridge Falsterbobron in Falsterbo channel during summer 2019.

Future announcement of bridge opening hours will be stated on the Swedish Maritime Administration website, www.sjofartsverket.se

Date	Opening hours
June 1 - July 5	0600, 0800, 1000, 1200, 1400, 1600, 1800, 2000, 2200 LT
July 6 - 14	0600, 0700, 1000, 1300, 1500, 1900, 2100, 2200 LT
July 15 - September 30	0600, 0800, 1000, 1200, 1400, 1600, 1800, 2000, 2200 LT

Bsp Sydkusten 2012/s52

Note 246

FALSTERBOKANALEN Traffic Regulations	
Opening hours For opening hours visit www.sjofartsverket.se	
Further information VHF: channel 11, call Falsterbokanalen VHF Ch 11 should, if possible, be watched during passage	
Traffic signal Light signals are exhibited from NE and SE breakwater heads (lights No 5 and No 1) F R Passage temporarily suspended	
Bridge and Lock signals Bridge and lock signals are exhibited from signal boards at the bridge and the south lock	
Iso R 4s	Stop
Iso R 4s + Iso W 4s	Signal from ship observed
Iso R 4s + F W	Prepare for passage The bridge is closing, keep clear
Iso G 4s	All clear. Proceed
FALSTERBOKANALEN Trafikbestämmelser	
Öppningstider För aktuella öppningstider se www.sjofartsverket.se	
Ytterligare information VHF: kanal 11, anrop Falsterbokanalen VHF kanal 11 ska om möjligt passas under hela kanalpassagen	
Trafiksignal Ljussignaler ges från NO och SO pirhuvuden (fyrar Nr 5 och Nr 1) F R Kanalen är tillfälligt ej tillgänglig för trafik	
Bro - Slussignaler Ljussignaler visas vid bron och södra slussen	
Iso R 4s	Stopp
Iso R 4s + Iso W 4s	Signal från fartyg uppfattad
Iso R 4s + F W	Förbered för genomfart Bron stänger
Iso G 4s	Klart för genomfart

Note 246

Sjöfartsverket. Publ. 15 maj 2019

The Sound

* 14044 (T)

Chart: 74, 8141, 92, 921, 9211, 922

Sweden. The Sound. W of Barsebäckshamn. Lommabukten. Approach to Malmö. Hydrographic survey.

Time: May 15 - 27.

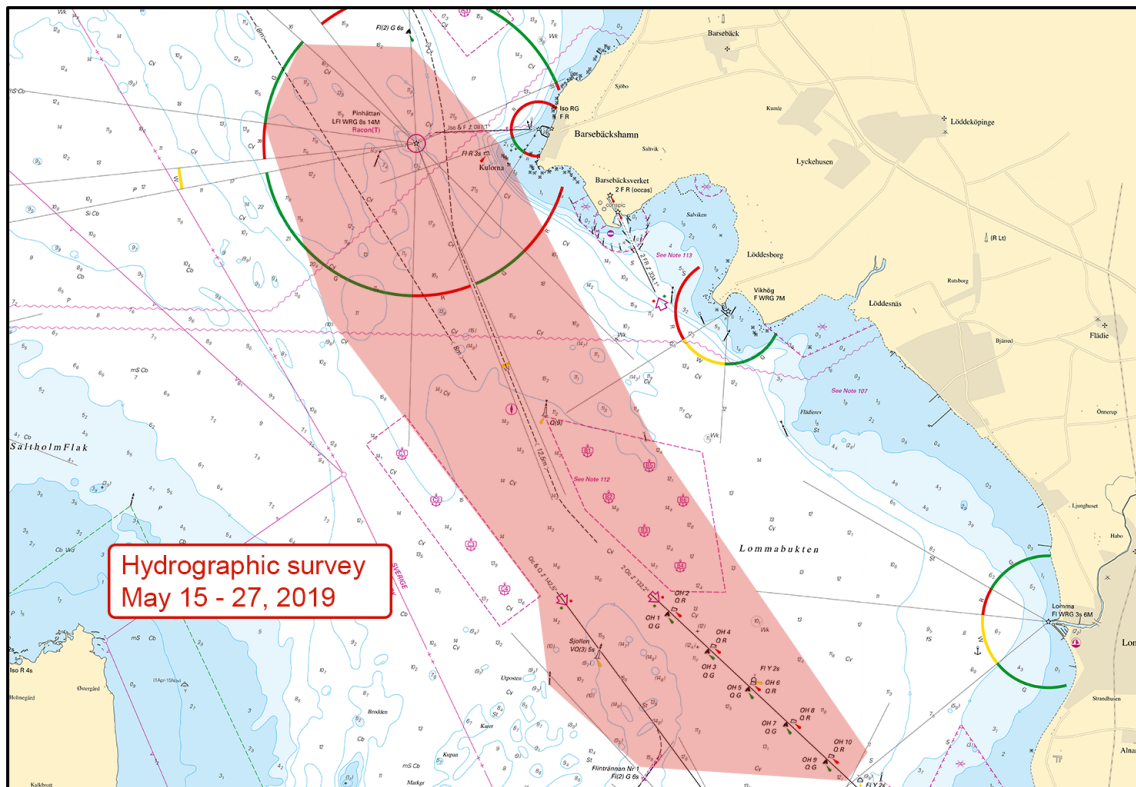
Hydrographic survey by vessel 'GUSTAF AF KLINT/SEBT' is taking place in the marked-out area in the chartlet.

No swell requested.

Hydrographic survey	55-41,8N	012-54,5E
---------------------	----------	-----------

Not shown in ENC.

Bsp Sydkusten 2012/s04, s05, s14, s15, s16, s17, s37, s38, s39, s44



Lommabukten

Sjöfartsverket. Publ. 16 maj 2019

Lake Vänern and Trollhätte Canal

* 14039 (T)

Chart: 1353

Sweden. Lake Vänern and Trollhätte Canal. Trollhättan. Locks temporarily closed for traffic. May 20, 2019.

Time: May 20 2019. 0600 - 1400.

The locks in Trollhättan are closed due to maintenance during the above stated time.

The locks in Trollhättan	58-15,9N	012-15,3E
--------------------------	----------	-----------

Not shown in ENC

Bsp Göta kanal 2011/s44, s45

Sjöfartsverket. Publ. 15 maj 2019