

Notices to Mariners, SWEDEN Swedish Maritime Administration



Areas in Swedish Notices to Mariners



SJÖFARTSVERKET

Editorial office
Swedish Maritime Administration
Ufs
601 78 NORRKÖPING
Sweden
tel: 0771 630 605
e-mail: ufs@sjofartsverket.se
Publisher:
Hydrographer Patrik Wiberg

ANNOUNCEMENTS

* 13894

Chart: 6181

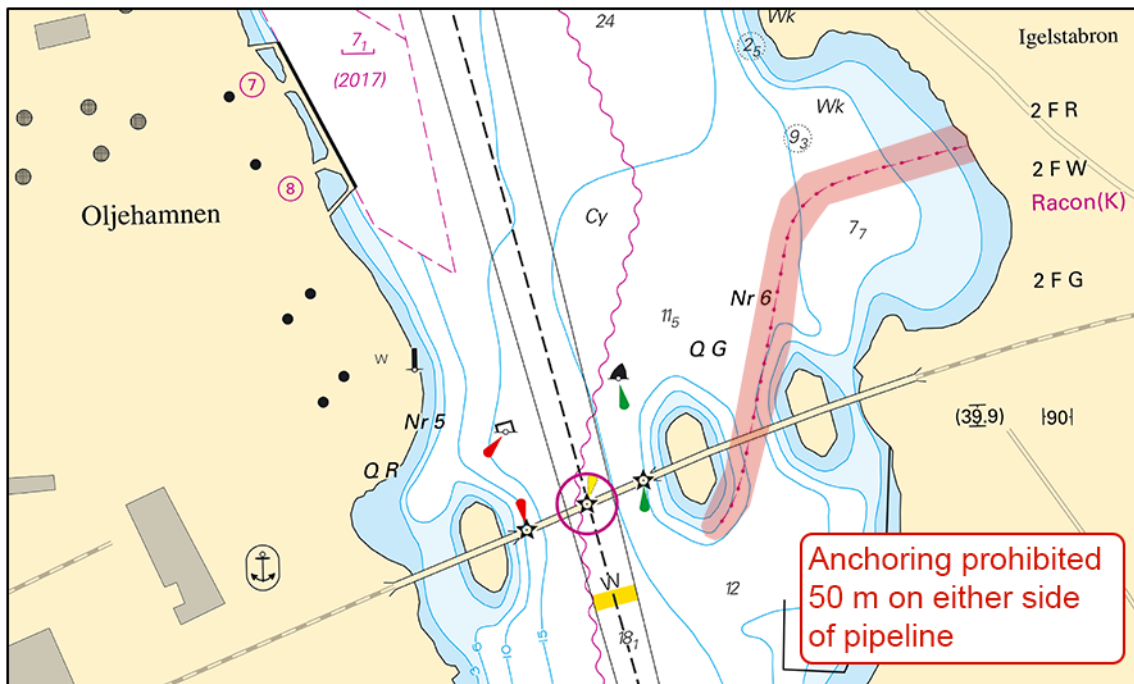
Södertälje. Hallsfjärden. Anchoring prohibited at pipeline.

Anchoring prohibited from April 25, 2019, 50 metres on either side of the pipeline marked in chartlet.

Pipeline	59-10,13N	017-40,09E
----------	-----------	------------

Not shown in ENC.

Bsp Mälaren - Hjälmarén 2016/s31



Södertälje

Länsstyrelsen Stockholm. Publ. 10 april 2019

NOTICES

Northern Baltic

* 13715

Chart: 616, 6162, 6171

Sweden. Northern Baltic. Port of Nynäshamn. Mooring buoy back in position.

Expired notices: 2018:726/13488(T)

The southern mooring buoy in Nynäshamn is back in position.

Mooring buoy	58-54,505N	017-57,721E
--------------	------------	-------------

Bsp Stockholm S 2018/s20, s21, s26, s35

Stockholms Hamnar. Publ. 11 april 2019

* 13804

Chart: 6142

Sweden. Northern Baltic. Stockholm archipelago. Höggarnsfjärden. Björnsgrund. Buoy.

Move	port hand light buoy approximately 80 meters SW to position	59-22,046N	018-18,873E
------	-------------------------------------------------------------	------------	-------------

Bsp Stockholm M 2018/s14, s20, s46

Sjöfartsverket. Publ. 11 april 2019

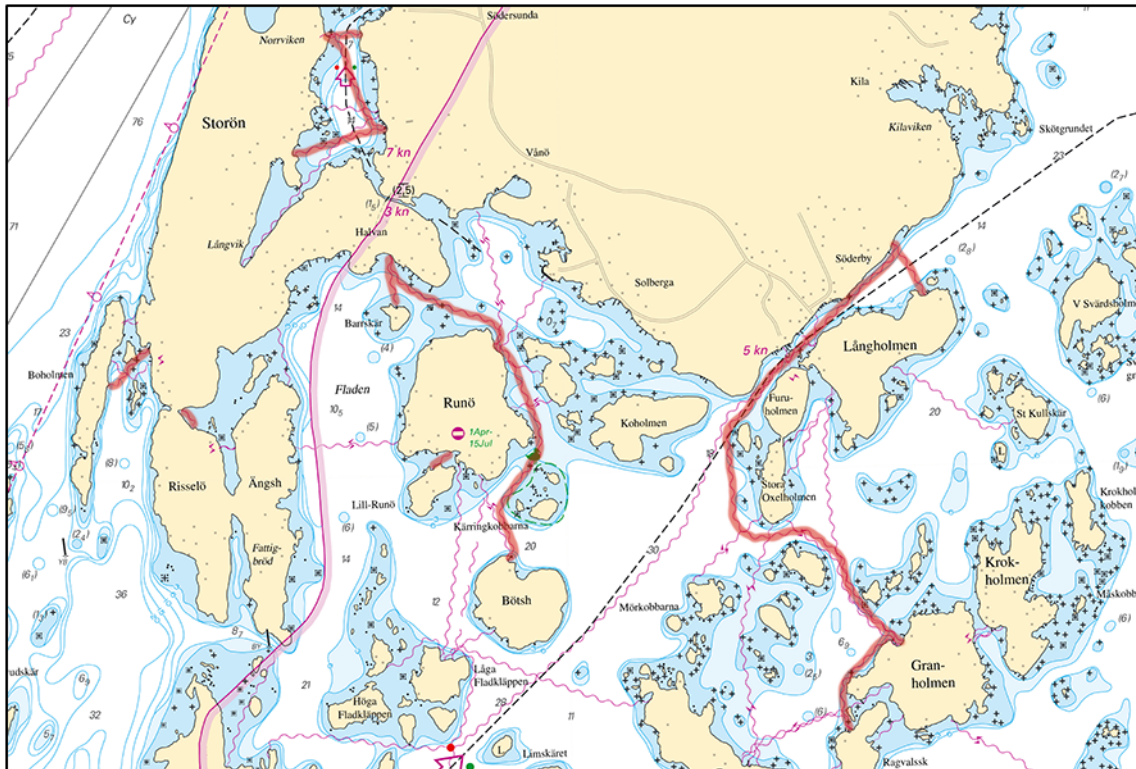
* 13845

Chart: 6144, 6145

Sweden. Northern Baltic. Runmarö. Submarine cable.

Insert	submarine cable a) - b)	a)	59-16,148N	018-43,842E	Norrviken
Insert	submarine cable b) - c)	b)	59-15,913N	018-44,128E	
		c)	59-15,843N	018-43,648E	Storön
Insert	submarine cable d) - e)	d)	59-15,348N	018-42,896E	
		e)	59-15,253N	018-42,689E	Boholmen
Insert	submarine cable f) - g)	f)	59-15,184N	018-43,053E	
		g)	59-15,137N	018-43,107E	Risselö
Insert	submarine cable h) - i)	h)	59-15,445N	018-44,158E	Barrskär
Insert	submarine cable i) - j)	i)	59-15,574N	018-44,130E	Halvan
Insert	submarine cable j) - k)	j)	59-15,337N	018-44,640E	Runö
		k)	59-14,773N	018-44,698E	Bötsholmen
Insert	submarine cable l) - m)	l)	59-15,061N	018-44,421E	Runö
		m)	59-15,017N	018-44,326E	Lill-Runö
Insert	submarine cable n) - o)	n)	59-15,440N	018-46,850E	Långholmen
Insert	submarine cable o) - p)	o)	59-15,579N	018-46,683E	Söderby
Insert	submarine cable p) - q)	p)	59-15,322N	018-46,293E	Långholmen
Insert	submarine cable q) - r)	q)	59-14,531N	018-46,672E	Granholmen
		r)	59-14,314N	018-46,428E	Ragvalsskär

Bsp Stockholm M 2018/s29, s30, s38, s47



Runmarö

Stockholms Skärgårdsnät AB. Publ. 11 april 2019

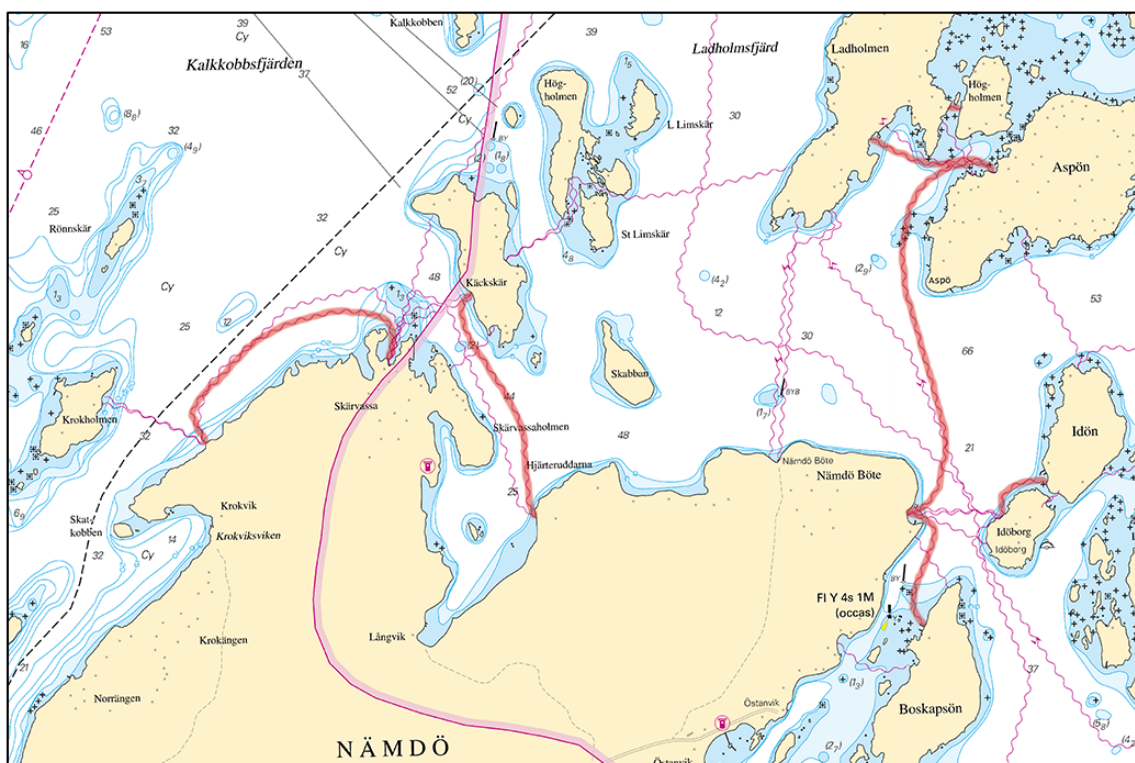
* 13861

Chart: 6144, 6145

Sweden. Northern Baltic. N of Nämdö. Submarine cables.

Insert	submarine cable a) - b)	a)	59-13,426N	018-45,368E	Högholmen
		b)	59-13,426N	018-45,307E	Ladholmen
Insert	submarine cable c) - d)	c)	59-13,351N	018-44,904E	Ladholmen
Insert	submarine cable d) - e)	d)	59-13,258N	018-45,538E	Aspön
Insert	submarine cable e) - f)	e)	59-12,365N	018-45,043E	Nämdö Böte
		f)	59-12,078N	018-45,130E	Boskapsön
Insert	submarine cable g) - h)	g)	59-12,363N	018-45,539E	Idöborg
		h)	59-12,445N	018-45,765E	Idön
Insert	submarine cable i) - j)	i)	59-12,382N	018-43,146E	Hjärteruddarna
		j)	59-12,969N	018-42,840E	Käckskär
Insert	submarine cable k) - l)	k)	59-12,787N	018-42,427E	Skärvassa
		l)	59-12,589N	018-41,471E	

Bsp Stockholm M 2018/s29, s30, s37, s38



N of Nämdö

Stockholms skärgårdsnät AB. Publ. 11 april 2019

* 13879 (T)

Chart: 61, 616, 6162, 6163, 62

Sweden. Northern Baltic. E of Utö. Firing exercises. April 24 - May 3.

Firing exercises will be carried out within Utö firing range during stated times. The current extension of the closed area is given in the table.

Signal ammunition is used during hours of darkness.

Information during practice times VHF channel 16, call Utö skjutfält, or phone +46 8 501 570 45. Information about upcoming practice times, phone: +46 10 823 18 23, Muskö Sjöcentral.

Date	Time	Range from shore
April 24	0900 - 2200 LT	3.8 M
April 28	1400 - 1800 LT	3.8 M
April 29 - May 3	0900 - 1700 LT	3.8 M

Position: Approx.	58-54N	018-20E	Utö Firing practice area
-------------------	--------	---------	--------------------------

Not shown in ENC.

Bsp Stockholm S 2018/s17, s18, s19, s37

Försvarmakten. Publ. 9 april 2019

* 13922

Chart: 6144, 6145

Sweden. Northern Baltic. S of Nämdö. Submarine cable.

Insert	submarine cable a) - b)	a)	59-09,242N	018-36,798E	Mörtö Södra
		b)	59-08,997N	018-36,836E	Mörtöklubb
Insert	submarine cable c) - d)	c)	59-10,053N	018-39,070E	Mörtö
		d)	59-09,558N	018-39,174E	Norsholmen
Insert	submarine cable e) - f)	e)	59-10,261N	018-41,994E	Orrön
Insert	submarine cable f) - g)	f)	59-09,750N	018-42,127E	Hemskär
Insert	submarine cable g) - h)	g)	59-09,234N	018-41,445E	Högholmen
		h)	59-09,096N	018-41,798E	Ångskär
Insert	submarine cable g) - i)	i)	59-08,768N	018-39,565E	Gymmern

Bsp Stockholm M 2018/s36, s37, s49



S of Nämdö

Stockholms skärgårdsnät AB. Publ. 10 april 2019

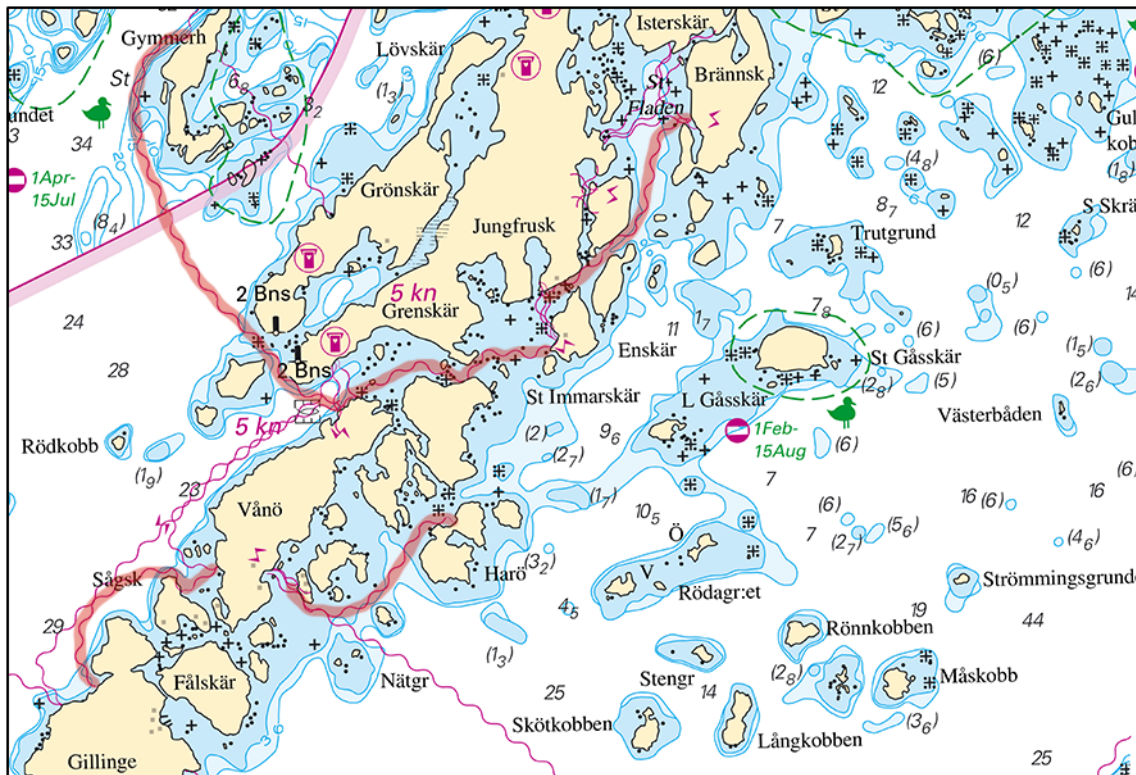
* 13923

Chart: 616

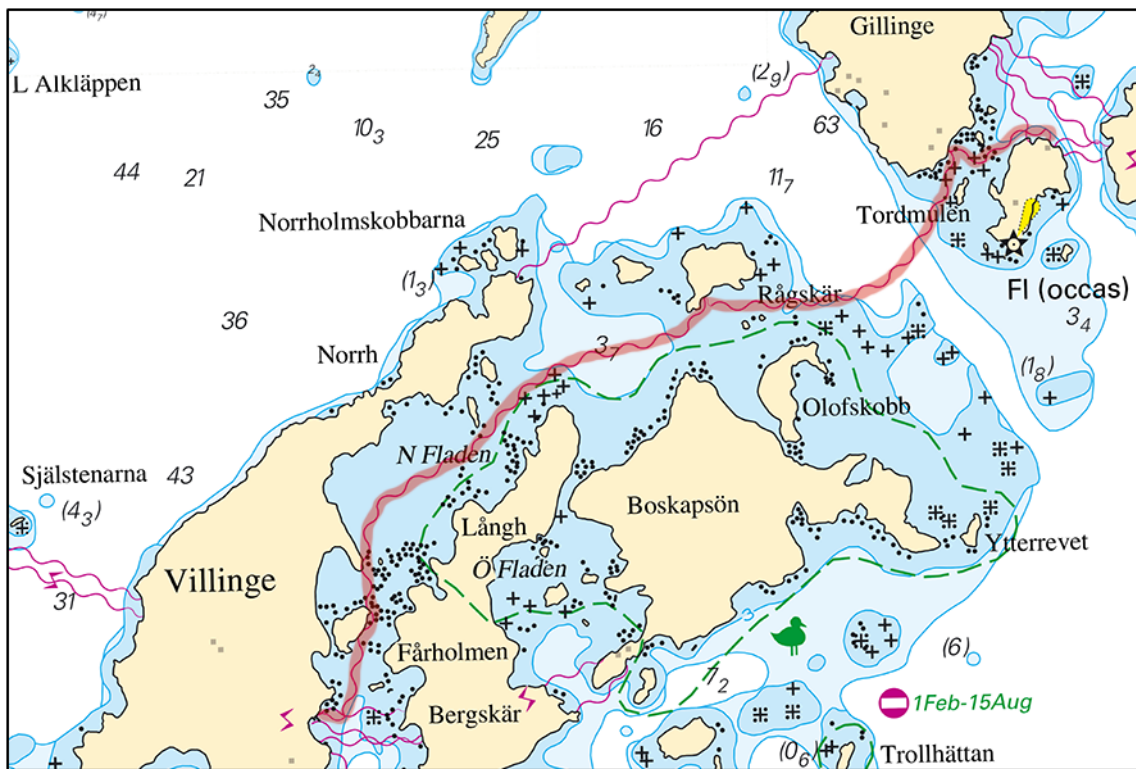
Sweden. Northern Baltic. S of Nämdö. Submarine cable.

Insert	submarine cable a) - b)	a)	59-08,486N	018-42,227E	Brännskär
		b)	59-08,055N	018-41,373E	Jungfruskär
Insert	submarine cable c) - d)	c)	59-07,926N	018-41,471E	Enskär
Insert	submarine cable d) - e)	d)	59-07,819N	018-40,994E	Stora Immarskär
Insert	submarine cable e) - f)	e)	59-07,751N	018-40,340E	Vånö
		f)	59-08,765N	018-39,566E	Gymmern
	submarine cable g) - h)	g)	59-07,327N	018-39,657E	Vånö
Insert	submarine cable h) - i)	h)	59-07,259N	018-39,456E	Sågskär
		i)	59-07,007N	018-39,006E	Gillinge
Insert	submarine cable j) - k)	j)	59-07,260N	018-40,073E	
		k)	59-07,431N	018-40,914E	Harö
Insert	submarine cable l) - m)	l)	59-06,532N	018-39,715E	Tordmulen
Insert	submarine cable m) - n)	m)	59-06,526N	018-39,256E	Gillinge
Insert	submarine cable n) - o)	n)	59-06,209N	018-38,191E	Rågskär
		o)	59-05,298N	018-36,485E	Villinge

Bsp Stockholm M 2018/s50



S of Nämö



S of Nämdö.

Stockholms skärgårdsnät AB. Publ. 10 april 2019

* 13932

Chart: 6141, 6142

Sweden. Northern Baltic. Stockholm. Channel Djurgårdsbrunnskanalen. Amended depth.

Amend	least depth in narrow channel to (1,7)	59-19,66N	018-08,58E
-------	----------------------------------------	-----------	------------

Bsp Mälaren - Hjälaren 2016/s53, Bsp Stockholm M 2018/s07, s10

Stockholms Hamnar. Publ. 11 april 2019

Central Baltic

* 13921 (T)

Chart: 6, 62, 624, 7, 71, 731

Sweden. Central Baltic. Between Öland and Gotland. Sail buoy. Research.

Time: April 23 - July 15, 2019

An unmanned sailbuoy with a length of 2 m, a height of 1,1 m and a weight of 60 kg, is adrift or sailing in the area marked in the chartlet.

The purpose of the sailbuoy is to study the movement of fish shoal. It will move between preset waypoints with GPS and autopilot.

The sailbuoy is unlit with no radar reflector or AIS. No deference to the buoy is needed.

Contact: Project leader +46 739 387969

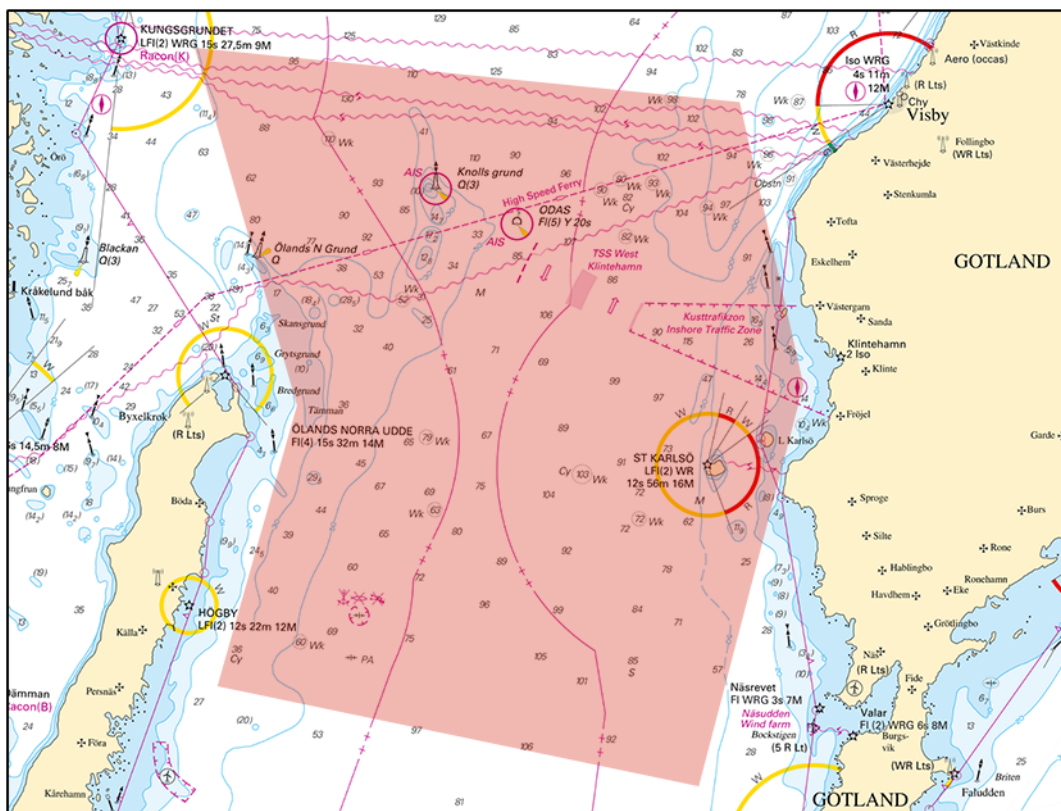
Research area a) - f)	a)	57-38,0N	018-00,4E
	b)	57-40,8N	017-02,1E
	c)	57-20,5N	017-14,4E
	d)	57-04,4N	017-06,4E
	e)	56-58,8N	017-56,0E
	f)	57-22,0N	018-07,2E

Not Shown in ENC

Bsp Kalmarsund 2014/s04, s05, s06, s07, s15, Bsp Kalmarsund 2019/s04, s05, s06, s07, s15, Bsp Ostkusten 2015/s06, s07, Bsp Ostkusten 2019/s06, s07



The sail buoy.



Between Öland and Gotland

SLU Aqua. Publ. 11 april 2019

South-Eastern Baltic

13897

Russia. South-Eastern Baltic. Russia. Kaliningrad. Obstruction.

Chart: 7

Insert	obstruction	54-39,96N	019-45,40E
--------	-------------	-----------	------------

Russian Notices to Mariners Edition No 11/2019 1260. Publ. 11 april 2019

Southern Baltic

* 12362

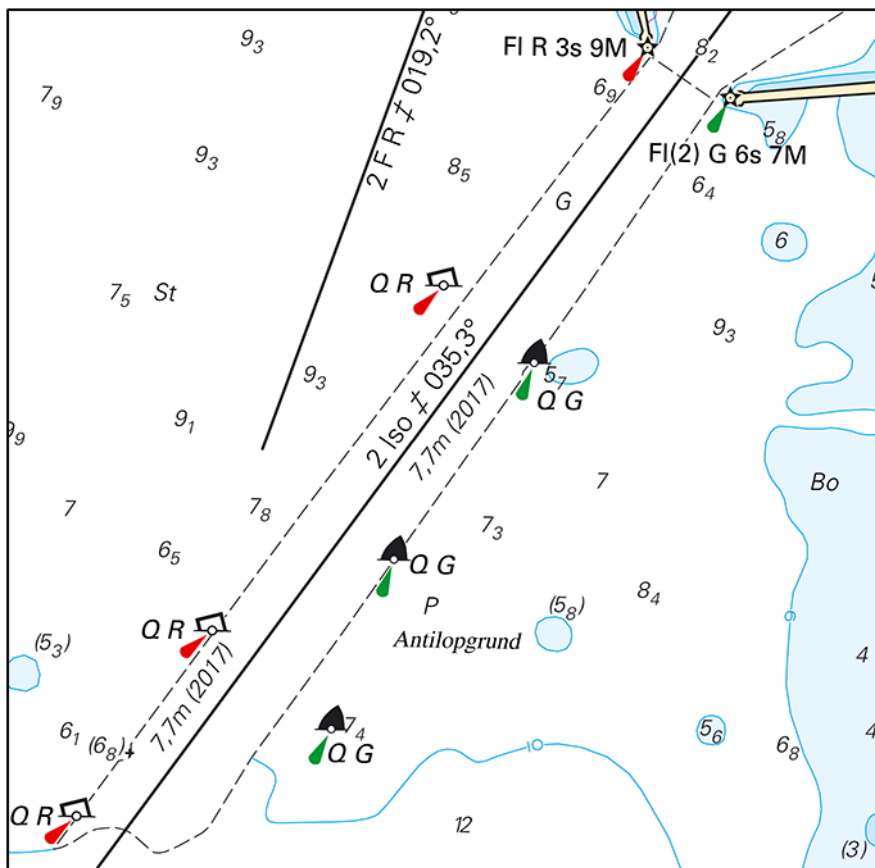
Chart: 839

Sweden. Southern Baltic. Approach to Ystad. Depths.

A hydrographic survey has shown other depths than charted. Important amendments are presented in the table, and will be published in the next print of the affected chart. The changes are available as an ENC update.

Insert	dredged area 7,7 m (2017)	a)	55-25,037N	013-48,992E
		b)	55-25,006N	013-49,080E
		c)	55-24,476N	013-48,458E
		d)	55-24,472N	013-48,277E
		e)	55-24,523N	013-48,340E
		f)	55-24,527N	013-48,357E
		g)	55-24,533N	013-48,356E
Amend	7,2 m to 6,9 m	h)	55-25,012N	013-48,943E
Insert	underwater rock (6,8)	i)	55-24,528N	013-48,354E

Bsp Sydkusten 2012/s52



Approach to Ystad

Sjöfartsverket. Publ. 11 april 2019

* 13919

Chart: 839

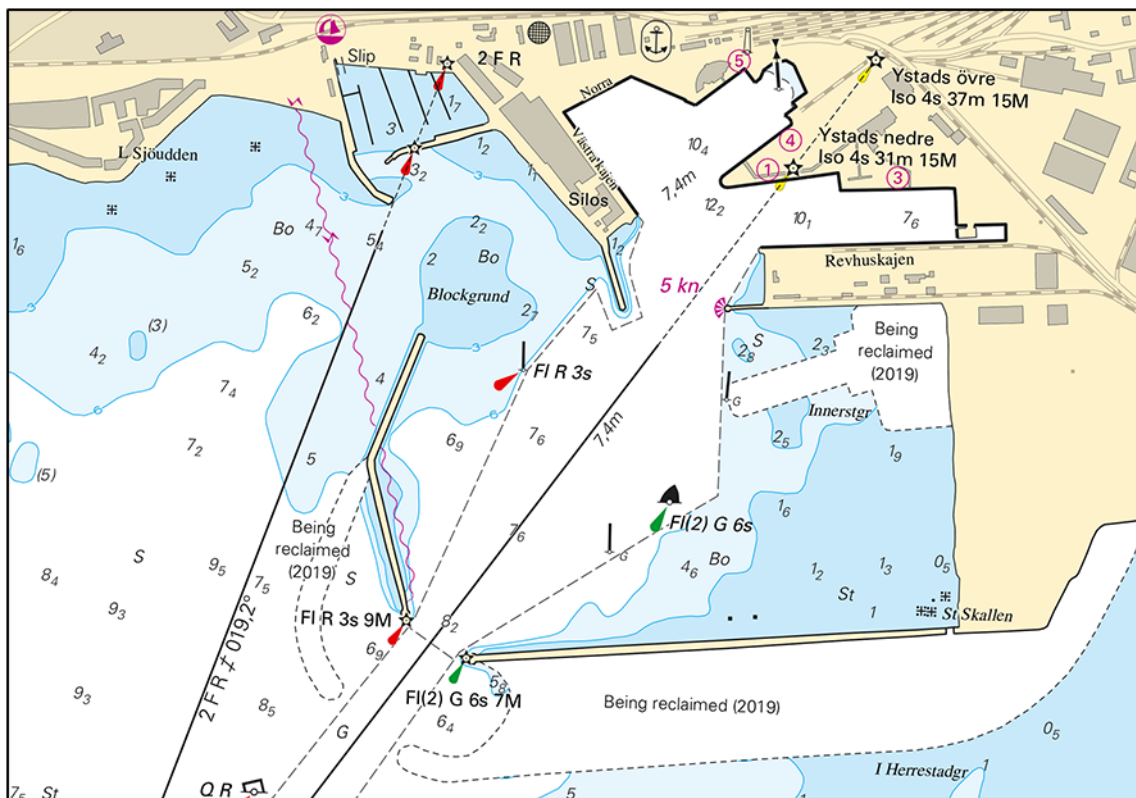
Sweden. Southern Baltic. Ystad. Areas being reclaimed.

Insert	area being reclaimed (2019)	a)	55-25,158N	013-50,193E
		b)	55-25,046N	013-50,172E
		c)	55-24,986N	013-49,946E
		d)	55-24,942N	013-49,010E
		e)	55-25,008N	013-49,101E

Insert	area being reclaimed (2019)	f)	55-24,964N	013-48,879E
		g)	55-25,049N	013-48,825E
		h)	55-25,195N	013-48,918E

Insert	area being reclaimed (2019)	i)	55-25,253N	013-49,929E
		j)	55-25,251N	013-49,813E
		k)	55-25,291N	013-49,743E
		l)	55-25,258N	013-49,555E
		m)	55-25,286N	013-49,536E
		n)	55-25,326N	013-49,723E
		o)	55-25,369N	013-49,756E

Bsp Sydkusten 2012/s27, s52



Port of Ystad

Per Aarsleff A/S. Publ. 11 april 2019

* 13920 (T)

Chart: 839

Sweden. Southern Baltic. Ystad. Extension works of harbour area. Work area.

Expired notices: 2019:749/13895(P)

See: 2019:750/13919

Time: Until December 2020

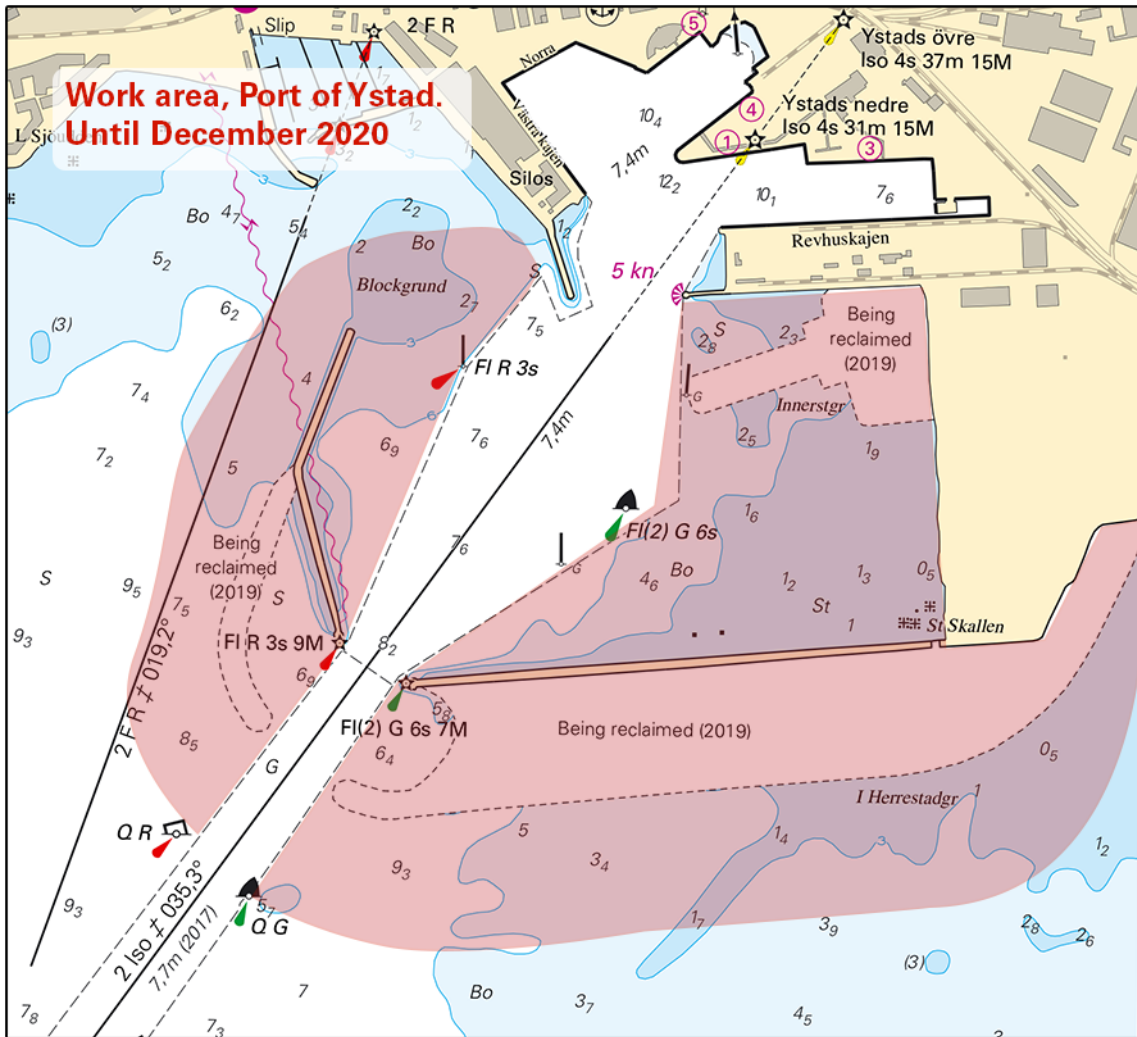
Development is taking place in Port of Ystad. Buoyage marks the working areas.

Unauthorized traffic should avoid passing through the work area.

Workboats and barges will be present in the work area, and may be contacted on VHF Ch 10/16.
Passage of work area with reduced speed are requested.

Ystad	55-25,0N	013-49,0E
-------	----------	-----------

Bsp Sydkusten 2012/s27, s52



Port of Ystad

Per Aarsleff A/S. Publ. 11 april 2019