

Notices to Mariners, SWEDEN Swedish Maritime Administration



Areas in Swedish Notices to Mariners



SJÖFARTSVERKET

Editorial office
Swedish Maritime Administration
Ufs
601 78 NORRKÖPING
Sweden
tel: 0771 630 605
e-mail: ufs@sjofartsverket.se
Publisher:
Hydrographer Patrik Wiberg

ANNOUNCEMENTS

No Announcements in this booklet.

NOTICES

Bay of Bothnia

* 13840

Chart: 421

Sweden. Bay of Bothnia. Piteå. Pilot boarding place.

Expired notices: 2019:743/13796(T)

From March 1, 2019 ordinary boarding place for pilot to Piteå is in use.
Ordinary pilot boarding place is moved.

Move	pilot boarding place	from N 64 39,7' E 021 29,5'	64-39,9N	021-29,8E
-------------	----------------------	-----------------------------	----------	-----------

Bsp Bottenviken 2018/s45

Sjöfartsverket. Publ. 5 mars 2019

The Quark

* 13728

Chart: 42, 429, 511, 512

Sweden. The Quark. Västra Kvarken. NW of Holmön. Icebreaking restriction cancelled.

Expired notices: 2019:740/13722(T)

The prohibition for icebreaking through 'Västra Kvarken', between the island Holmön and the mainland, ends.

NW of Holmön	63-50N	020-49E
--------------	--------	---------

Bsp Bottenhavet N 2013/s07, s38, s40

Sjöfartsverket. Publ. 5 mars 2019

Northern Baltic

* 13836 (T)

Chart: 6141, 6142

Sweden. Northern Baltic. Stockholm. Nacka. Kvarnholmen. Works. Diving operations.

Time: Until further notice

Renovation works on the north quay at Kvarnholmen.

The work includes diving operations.

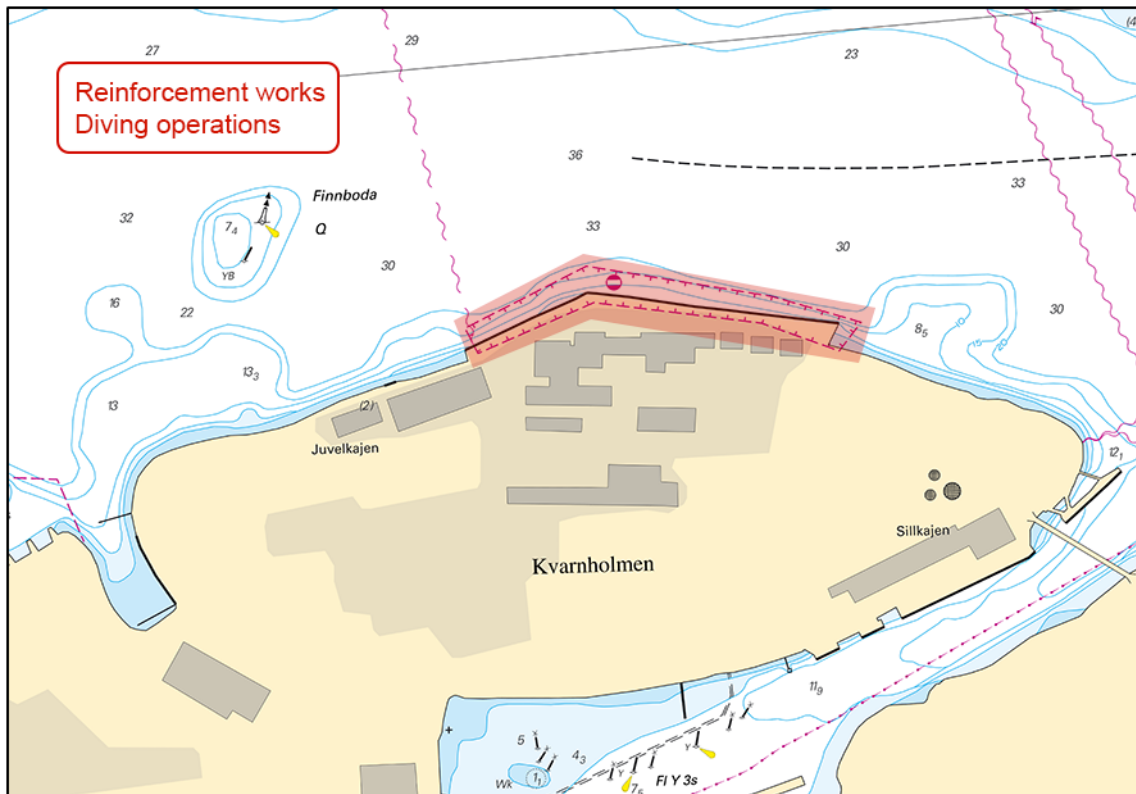
Mariners are requested to pass the area with caution, and respect the restricted area in the chart.

Kvarnholmen, north quay	59-19,09N	018-08,33E
-------------------------	-----------	------------

<http://www.kvarnholmen.com/>

Not shown in ENC.

Bsp Mälaren - Hjälmaren 2016/s53, Bsp Stockholm M 2018/s07, s10



Reinforcement work at Kvarnholmen

Kvarnholmen Utveckling AB. Publ. 5 mars 2019

* 13848 (T)

Chart: 6212

Sweden. Northern Baltic. Port of Norrköping. Dredging operations.

Expired notices: 2018:709/13209(T)

Time: 2019 - 2020.

Dredging operations are temporary suspended during spring 2019. Hydrographic depth surveys and bar sweeping will be performed during winter/spring of 2019.

Vessels are advised to exercise caution when passing the work area.

At times, pipelines, buoy markers and mooring wires may hinder shipping but these will be lowered to the seabed whenever necessary to ensure a safe passage.

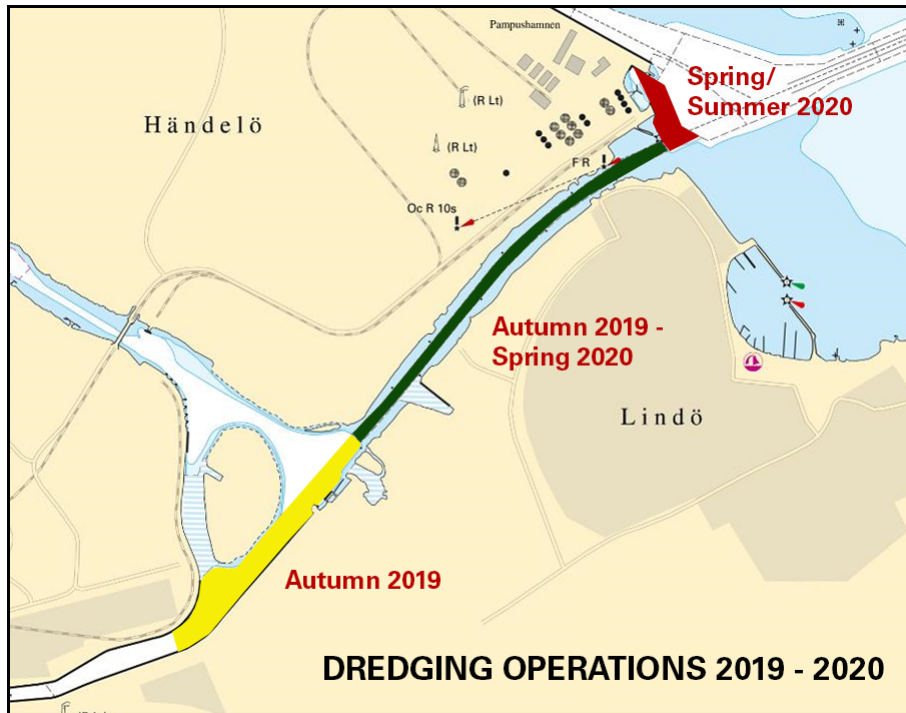
Approximate times for dredging in respective area are indicated on the chartlet.

For further information, please contact the Harbour Master, telephone +46 70 601 08 48.

Motala ström	a)	58-35,8N	016-12,7E
Pampushamnen	b)	58-37,2N	016-15,0E

Not shown in ENC.

Bsp Ostkusten 2015/s26, s58, s59, Bsp Ostkusten 2019/s26, s58, s59



Pampushammen - Motala ström

Norrköpings Hamn AB. Publ. 7 mars 2019

Lake Mälaren and Södertälje Canal

* 13835 (T)

Chart: 111

Sweden. Lake Mälaren and Södertälje Canal. Stockholm. Lovön. Hässelbyholme. Works.

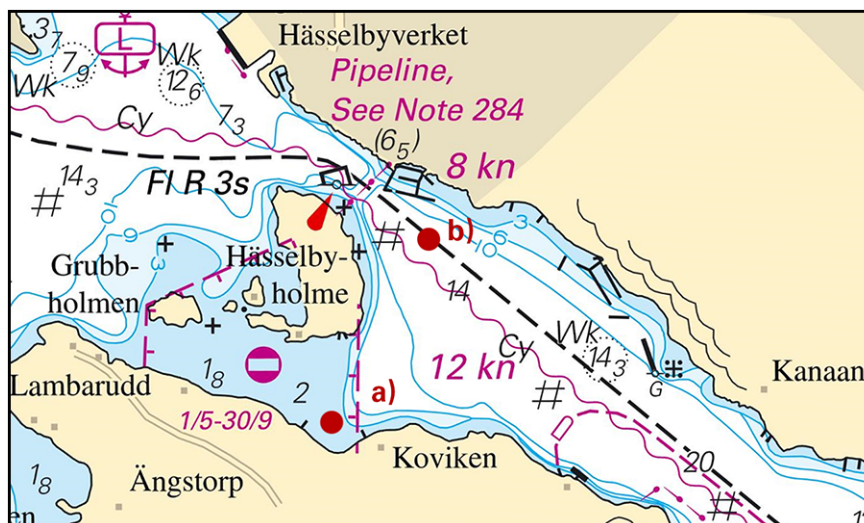
Time: March 18 - June 2

In connection with the establishment of a water pipeline, dredging, excavation and piling works will be carried out 18/3 - 2/6 at position a).

Piling and diving works will be performed 22/4 - 2/6 in the fairway at position b). The work area will be marked out.

a)	59-20,97N	017-49,73E
b)	59-21,32N	017-50,07E

Bsp Mälaren - Hjälmarén 2016/s48, s49



Water pipeline at Hässelbyholme

Peab. Publ. 7 mars 2019

* 13842 (T)

Chart: 111, 6141

Sweden. Lake Mälaren and Södertälje Canal. Stockholm. Bällstaviken. Huvudstabron. Geotechnical surveys.

Time: march - april 2019

Geotechnical surveys are conducted in the vicinity of the fairway from a 18x9 metres barge.

Vessels will be able to pass the area at all times, but are advised to pass with as little swell as possible.

Geotechnical surveys	59-21,03N	017-58,35E
----------------------	-----------	------------

Bsp Mälaren - Hjälmarens 2016/s49, s60

*Sweco Civil AB. Publ. 7 mars 2019***South-Eastern Baltic**

* 13846 (T)

Chart: 7, 71, 83

Sweden. South-Eastern Baltic. Norra Midsjöbanken. Hoburgs bank. Equipment on seabed.

Measuring equipment have been placed on the seabed to measure underwater noise during the construction of gas pipelines.

Equipment is not an obstruction to surface navigation. Seabed activities nearby equipment is discouraged.

a)	56-09,95N	017-08,18E
b)	56-10,33N	017-08,98E
c)	56-09,59N	017-08,87E
d)	55-58,71N	017-20,47E
e)	55-59,02N	017-21,36E
f)	55-59,52N	017-21,19E
g)	56-19,74N	018-31,88E
h)	56-19,58N	018-31,03E
i)	56-20,25N	018-31,76E

*Nordstream 2. Publ. 6 mars 2019***Southern Baltic**

* 13830

Chart: 713

Sweden. Southern Baltic. Öland. Degerhamn. Depths.

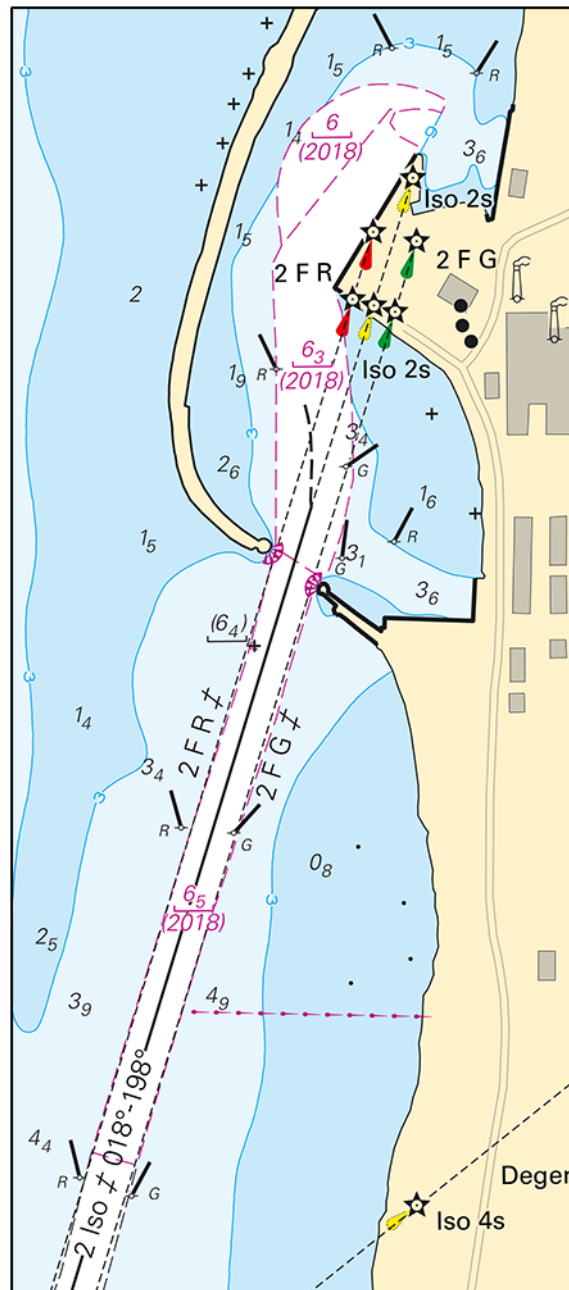
Expired notices: 2018:723/13413(P)

A hydrographic survey in Degerhamn has shown other depths than charted.

Important amendments are presented in the table below, and will be published in the next print of the affected chart.

Insert	swept area 6,5 m (2018) within a) - d)		a)	56-20,784N	016-24,162E
			b)	56-21,070N	016-24,327E
			c)	56-21,082N	016-24,290E
			d)	56-20,790N	016-24,122E
Insert	underwater rock	with swept area 6,4 m	e)	56-21,036N	016-24,270E
Insert	swept area 6,3 m (2018) within		f)	56-21,082N	016-24,290E
			g)	56-21,222N	016-24,290E
			h)	56-21,297N	016-24,395E
			i)	56-21,275N	016-24,415E
			j)	56-21,210N	016-24,342E
			k)	56-21,117N	016-24,360E
			l)	56-21,070N	016-24,327E
Insert	swept area 6 m (2018) within		m)	56-21,233N	016-24,298E
			n)	56-21,265N	016-24,298E
			o)	56-21,287N	016-24,316E
			p)	56-21,308N	016-24,376E
			q)	56-21,300N	016-24,442E
			r)	56-21,295N	016-24,439E
			s)	56-21,295N	016-24,397E

Bsp Hanöbukten 2018/s51, Bsp Kalmarsund 2014/s45, Bsp Kalmarsund 2019/s45



Port of Degerhamn

Sjöfartsverket. Publ. 6 mars 2019

The Sound

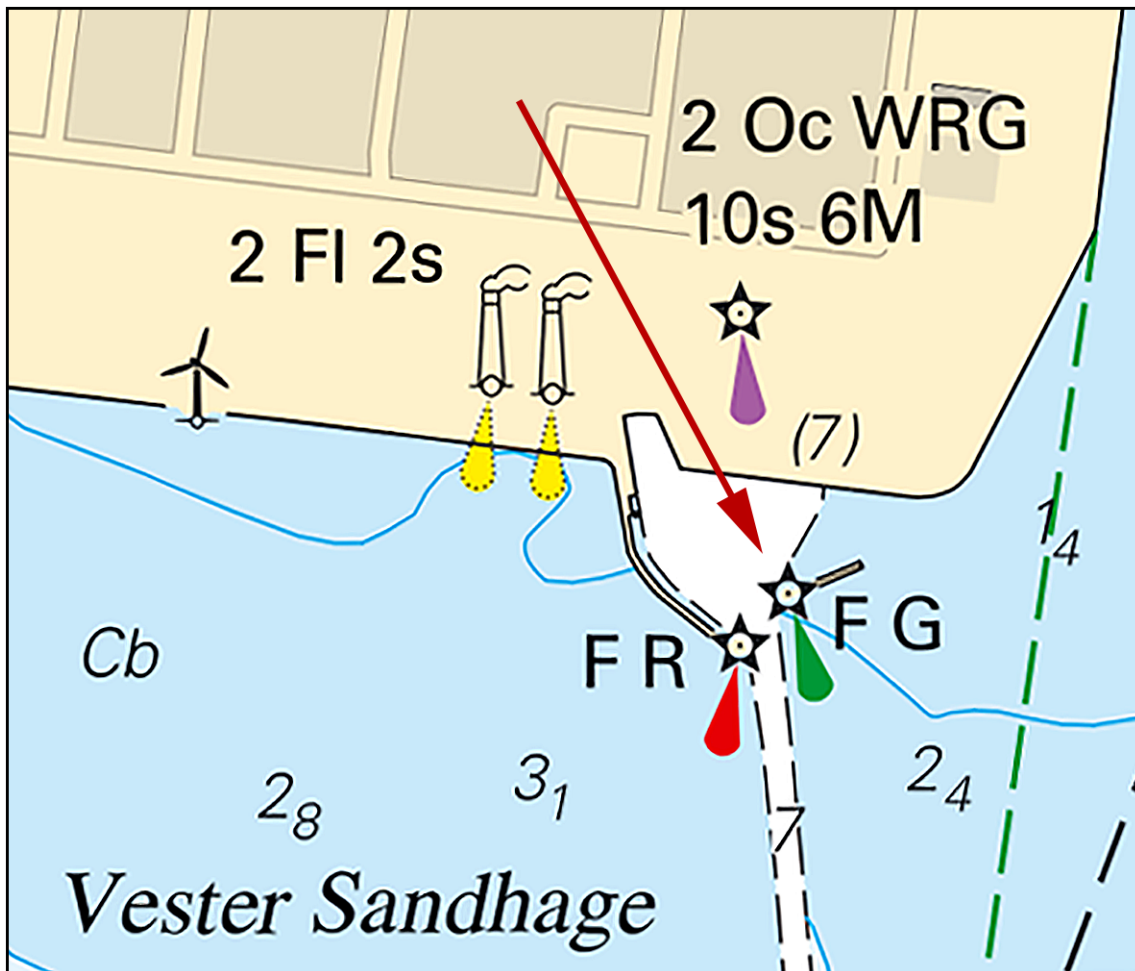
13821

Denmark. The Sound. Avedøreverket Harbour. Light.

Chart: 921

Insert	light F G	55-35,927N	012-29,169E
--------	-----------	------------	-------------

Bsp Sydkysten 2012/s19



Avedøreverkets Havn

Dk NtM 102-19. Publ. 6 mars 2019

Kattegat

13827

Chart: 8

Denmark. Kattegat. Approach to Port of Fredrikshavn. Safe Water Mark.

Move	Safe Water Mark Iso 4s to	57-24,679N	010-36,049E
------	---------------------------	------------	-------------

Dk NtM 107-19. Publ. 6 mars 2019

* 13838 (T)

Chart: 92, 923, 924

Sweden. Kattegat. W of Halmstad. Ringenäs. Firing exercise. March 13.

Position: Approx.	56-40,8N	012-38,6E	Firing restriction area R41 A RINGENÄS
-------------------	----------	-----------	--

Firing will take place at R41A Ringenäs firing range during stated times. The dangerous area extends from the shore according to table below. A light on shore, VQ R, will be shown during firing. For further information call +46 35 266 39 55, +46 35 536 77.

Date	Time	Range
March 13	1230 - 1600 LT	3.8 M

Not shown in ENC.

Bsp Västkusten S 2016/s29, s30, Bsp Västkusten S 2019/s29, s30

Försvarsmakten, Lv6. Publ. 6 mars 2019

Skagerrak

13820

Chart: 8

Denmark. Skagerrak. NNE of Hanstholm. Jammerbugt. Wreck.

Insert	wreck at a depth of 20 metres	57-23,99N	008-50,09E
--------	-------------------------------	-----------	------------

Dk NtM 103-19. Publ. 6 mars 2019

* 13844 (T)

Chart: 9331

Sweden. Skagerrak. Lysekil. Works with supply pipelines.

Time: March 7 - 31, 2019.

Works with supply pipelines is taking place in the marked-out areas in the chartlet. Mariners are requested to pass with caution.

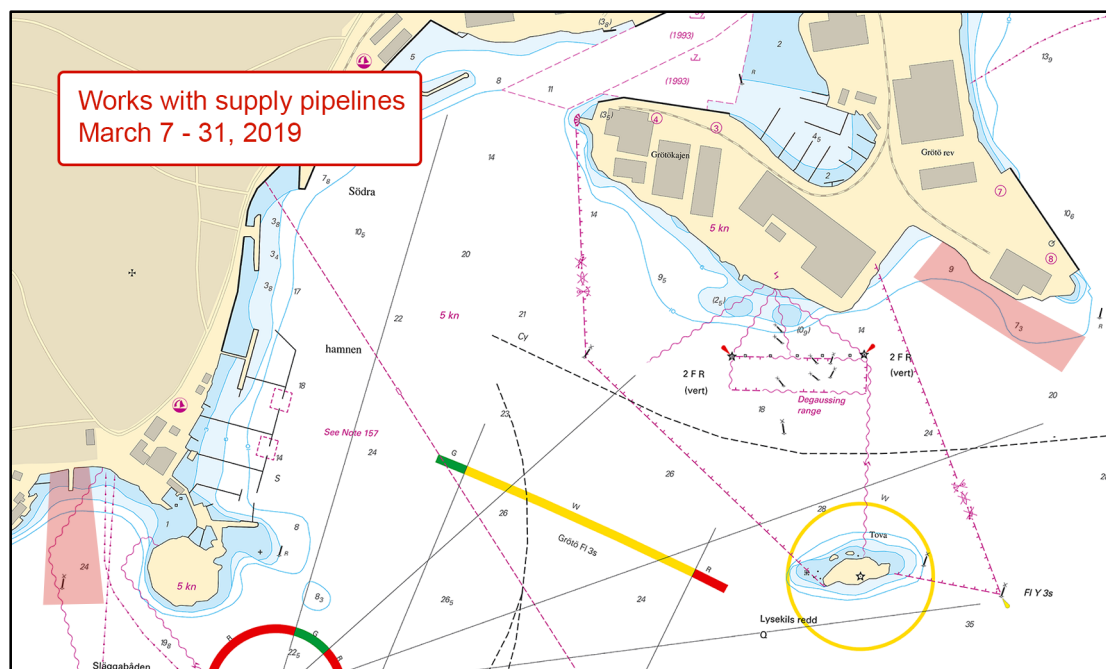
Working boats can be contacted on VHF channel 8 or 16.

Contact: Site manager +46 705-214 422

Working area 1	58-16,11N	011-25,95E
Working area 2	58-16,31N	011-27,37E

Not shown in ENC.

Bsp Västskusten N 2016/s32, Bsp Västskusten N 2019/s32, s36



Lysekil

BlueOrbis AB. Publ. 6 mars 2019

Lake Vänern and Trollhätte Canal

* 13816

Chart: 1353

Sweden. Lake Vänern and Trollhätte Canal. SW of Vänersborg. Vargön. Rånnum. Light extinguished.

Replace	light 203a Rånnum Q WRG with beacon	58-20,836N	012-22,958E
---------	-------------------------------------	------------	-------------

Sjöfartsverket. Publ. 7 mars 2019

Inshore waters

* 13837

Chart: 114

Sweden. Inshore waters. Lake Mälaren. W of Kungsör. Arbogaån. Buoyage.

Replace	port hand spar buoy with starboard hand spar buoy	59-25,403N	016-02,154E
----------------	---	------------	-------------

Bsp Mälaren - Hjälmarén 2016/s12

Arboga kommun. Publ. 6 mars 2019