

## Notices to Mariners, SWEDEN Swedish Maritime Administration



### Areas in Swedish Notices to Mariners



**SJÖFARTSVERKET**

Editorial office  
Swedish Maritime Administration  
Ufs  
601 78 NORRKÖPING  
Sweden  
tel: 0771 630 605  
e-mail: [ufs@sjofartsverket.se](mailto:ufs@sjofartsverket.se)  
Publisher:  
Hydrographer Patrik Wiberg



## ANNOUNCEMENTS

No Announcements in this booklet.

## NOTICES

### Sea of Åland and Archipelago Sea

\* 13674

Chart: 536

Sweden. Sea of Åland and Archipelago Sea. Östhammar. W of Singö. Slätön - Medholmen. Nature reserve. Speed limit.

Insert	nature reserve	a)	60-12,017N	018-38,452E
		b)	60-11,951N	018-38,622E
		c)	60-12,049N	018-38,944E
		d)	60-12,141N	018-39,010E
		e)	60-12,160N	018-39,348E
		f)	60-11,675N	018-40,363E
		g)	60-11,300N	018-40,413E
		h)	60-10,903N	018-40,888E
		i)	60-10,558N	018-41,576E
		j)	60-09,947N	018-41,580E
		k)	60-10,016N	018-40,630E
		l)	60-09,308N	018-40,600E
		m)	60-09,660N	018-38,411E
		n)	60-09,798N	018-35,587E
		o)	60-10,597N	018-35,082E
		p)	60-10,997N	018-36,048E
		q)	60-10,918N	018-36,479E
		r)	60-11,086N	018-37,103E

Insert	See note 290	60-10,560N	018-35,590E
Insert	See note 290	60-09,900N	018-40,150E
Insert	See note 290	60-11,650N	018-38,590E

Bsp Stockholm N 2018/s16

#### Note 290

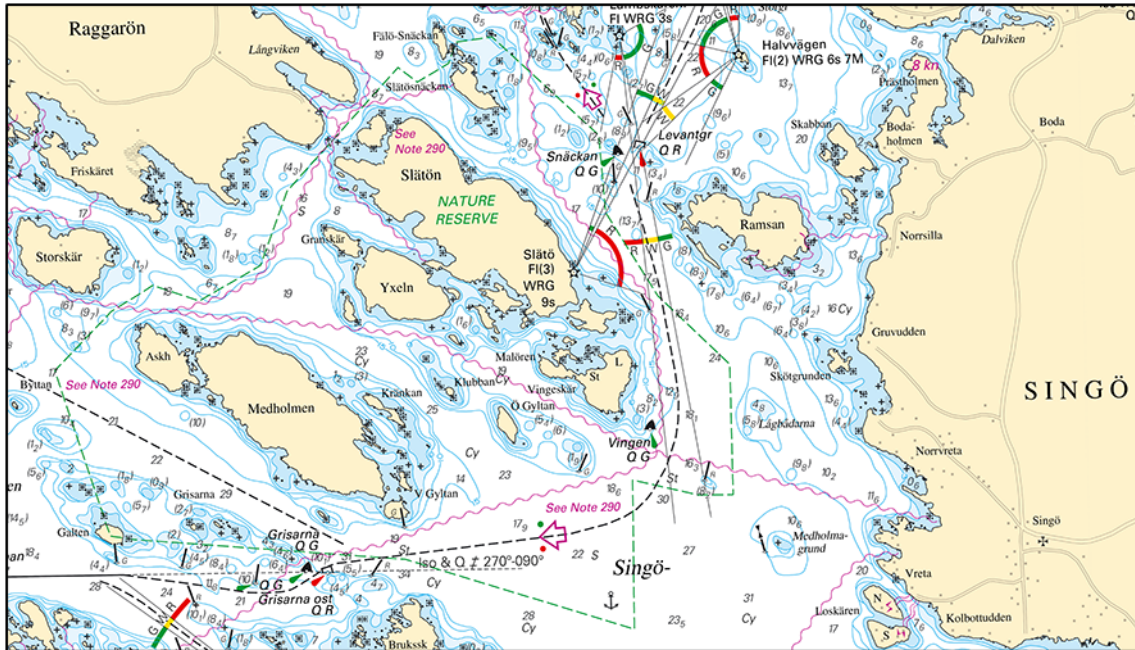
##### NATURE RESERVE SLÄTÖN-MEDHOLMA

Speed limit of 5 knots where depth is less than 6 meters. Water scooters and equivalent crafts are only permitted within 100 meters on either side of the fairway line.

##### SLÄTÖN-MEDHOLMA NATURRESERVAT

Fartbegränsning 5 knop på djup mindre än 6 meter. Förbud mot vattenskoter eller motsvarande fartyg med undantag för körning inom 100 meter på var sida om markerad farledslinje.

Note 290



Slätön-Medholma

Länsstyrelsen Uppsala län. Publ. 16 januari 2019

**Northern Baltic**

\* 13691

Chart: 616, 6163

Sweden. Northern Baltic. Stockholm. Utö. Gruvbryggan. Buoyage.

Replace	starboard-hand spar buoy with starboard-hand light buoy FI G 2s	a)	58-58,330N	018-19,662E
---------	---	----	------------	-------------

Bsp Stockholm S 2018/s11, s18, s34

Sjöfartsverket, Norrköping. Publ. 16 januari 2019

\* 13692 (T)

Chart: 6141, 6142

Sweden. Northern Baltic. Stockholm. Strömmen. Skeppsbron. Dredging.

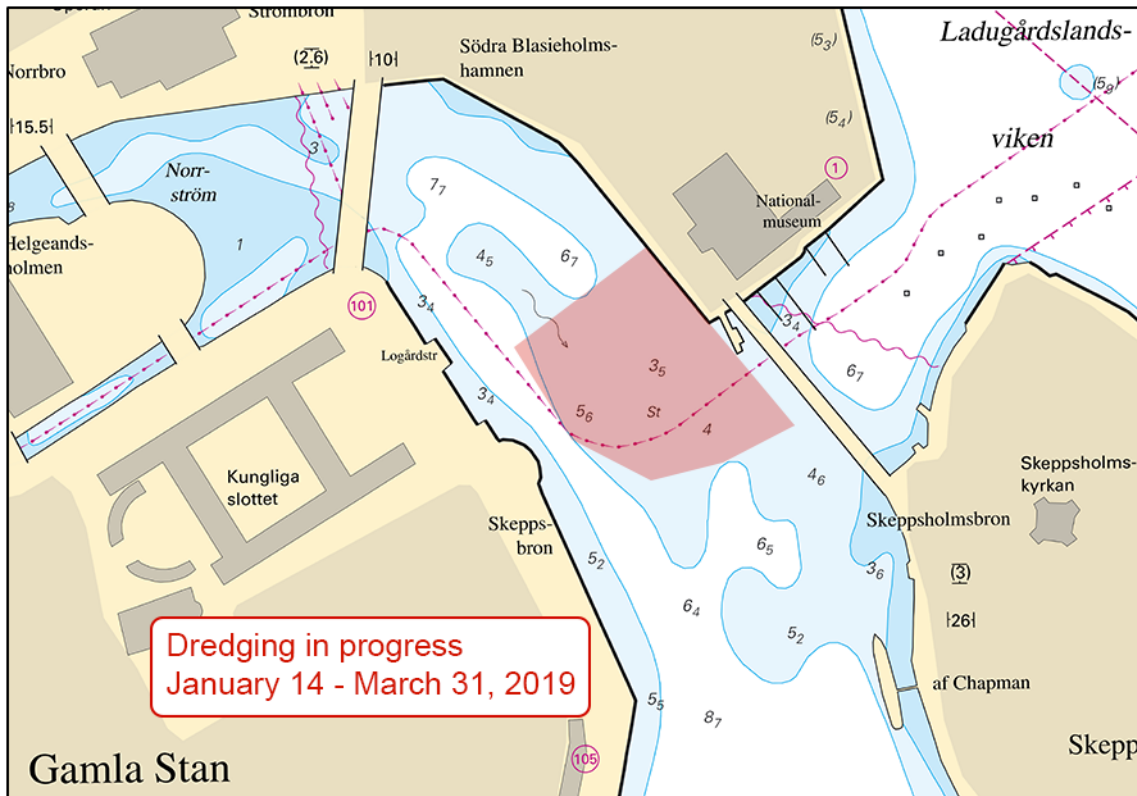
Time: January 14 - March 31, 2019.

Dredging in progress in the marked-out area in the chartlet. Working area is marked with special purpose spar buoys.

Dredging	59-19,65N	018-04,63E
----------	-----------	------------

Not shown in ENC.

Bsp Mälaren - Hjälaren 2016/s52, Bsp Stockholm M 2018/s06, s10



Skeppsbron

Stockholms hamnar. Publ. 17 januari 2019

**Central Baltic**

\* 13684 (T)

Chart: 71

Sweden. Central Baltic. E of Öland. Oil recovery from wreck. Oil spill booms. Buoyage.

Expired notices: 2019:736/13676(T)

Time: Until further notice

Oil recovery from wreck. Oil booms have been placed. The wreck is marked with a light buoy and a special purpose spar buoy.

light buoy Q W 4 M	56-48,47N	017-12,33E
special purpose spar buoy	56-48,35N	017-12,32E

Bsp Kalmarsund 2014/s07

Kustbevakningen. Publ. 16 januari 2019

**The Sound**

\* 13688

Chart: 921, 922

Sweden. The Sound. Island of Ven. Light 'Vens S udde'. Sectors.

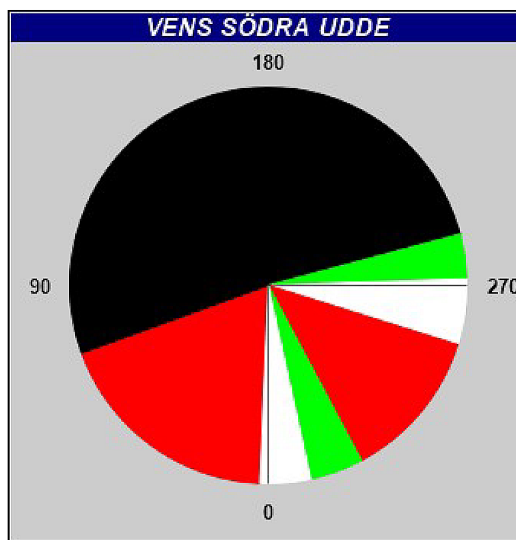
Sectors on light 'Vens S udde' have been checked and the result is as follows:

Light 'Vens S Udde' Fl (2) WRG 6s 8M	55-53,52N	012-42,67E
--------------------------------------	-----------	------------

Bearing (from sea towards light)	Colour	
002.4 - 070.0	R	
070.0 - 255.0	Dk	
255.0 - 268.1	G	The boundary between green and white has been adjusted by + 2.5 degrees
268.1 - 287.4	W	
287.4 - 332.0	R	
332.0 - 347.6	G	
347.6 - 002.4	W	

Adm. LoL C1932

Bsp Sydkusten 2012/s13, s14, s16, s31



Light 'Vens S udde'

Sjöfartsverket. Publ. 16 januari 2019

**Skagerrak**

\* 13694 (P)

Chart: 937

**Sweden. Skagerrak. Strömstad. Amendments to buoyage.**

Several amendments to the buoyage in the approach to Strömstad will be made. The changes will be between beacon 'Dyngan' and the ferry terminal in Strömstad. The Buoy-laying vessel 'Scandica'/SKFZ will work in the area. Mariners are requested to proceed with caution and be aware that the chart in the area might not show correct buoy positions.

	Planned amendments			
<b>Move</b>	port hand spar buoy approx. 30 m NE to position	a)	58-55,886N	011-08,147E
<b>Move</b>	starboard hand light buoy approx. 50 m W to b), and amend character to FI G 2s	b)	58-55,991N	011-07,334E
<b>Insert</b>	port hand light buoy, FI R 2s	c)	58-55,870N	011-09,268E
<b>Insert</b>	south cardinal spar buoy	d)	58-56,008N	011-10,089E
<b>Insert</b>	port hand light buoy, FI R 2s	e)	58-55,805N	011-08,971E
<b>Move</b>	starboard hand spar buoy with topmark approx. 40 m to position	f)	58-55,649N	011-08,051E
<b>Move</b>	port hand light buoy approx. 240 m W to g), and amend character to FI R 2s	g)	58-55,785N	011-08,675E
<b>Move</b>	starboard hand light buoy approx. 25 m S to h), and amend character to FI G 2s	h)	58-55,824N	011-09,417E

Not shown in ENC.

Bsp Västkusten N 2016/s09, s34

Sjöfartsverket. Publ. 16 januari 2019