

## Notices to Mariners, SWEDEN Swedish Maritime Administration



### Areas in Swedish Notices to Mariners



**SJÖFARTSVERKET**

Editorial office  
Swedish Maritime Administration  
Ufs  
601 78 NORRKÖPING  
Sweden  
tel: 0771 630 605  
e-mail: [ufs@sjofartsverket.se](mailto:ufs@sjofartsverket.se)  
Publisher:  
Hydrographer Patrik Wiberg



## ANNOUNCEMENTS

\* 13681 (T)

Chart: 13, 131, 132, 133, 1331, 134, 135, 1352,  
1353

**Lake Vänern and Trollhätte canal. Low water level. Maximum draught reduced.**

Expired notices: 2018:729/13579(T)

Time: From January 7, 2019.

Due to a low water level, the maximum draught is reduced from 5,40 to 5,25 in Lake Vänern and Trollhättan Canal. The water level is slowly rising, but may decrease again. Further restrictions must be expected.

|             |        |         |
|-------------|--------|---------|
| Lake Vänern | 58-50N | 013-15E |
|-------------|--------|---------|

Not shown in ENC.

Sjöfartsverket, Trollhättan. Publ. 9 januari 2019

## NOTICES

**Bay of Bothnia**

\* 13689 (T)

Chart: 41, 421

**Sweden. Bay of Bothnia. E of Byske. Tåme. Firing exercise, January 17 - 18.**

|                   |        |         |                           |
|-------------------|--------|---------|---------------------------|
| Position: Approx. | 64-55N | 021-30E | Tåme Firing practice area |
|-------------------|--------|---------|---------------------------|

Firing exercises will be carried out at Tåme firing range during times listed below. During these times the charted danger area "R 58" is closed to navigation within stated distance from shore.

During firing a red balloon is shown from the observation towers. Further information on VHF channel 16, call Tåme skjutfält, or phone +46 921 348405 alt. +46 921 349100.

| Date            | Time           | Range from shore |
|-----------------|----------------|------------------|
| January 17 - 18 | 0830 - 1730 LT | 9.5 M            |

Not shown in ENC.

Bsp Bottenviken 2018/s06, s37, s38, s39, s40, s41, s42, s44

Försvarsmakten. Publ. 10 januari 2019

**Sea of Bothnia**

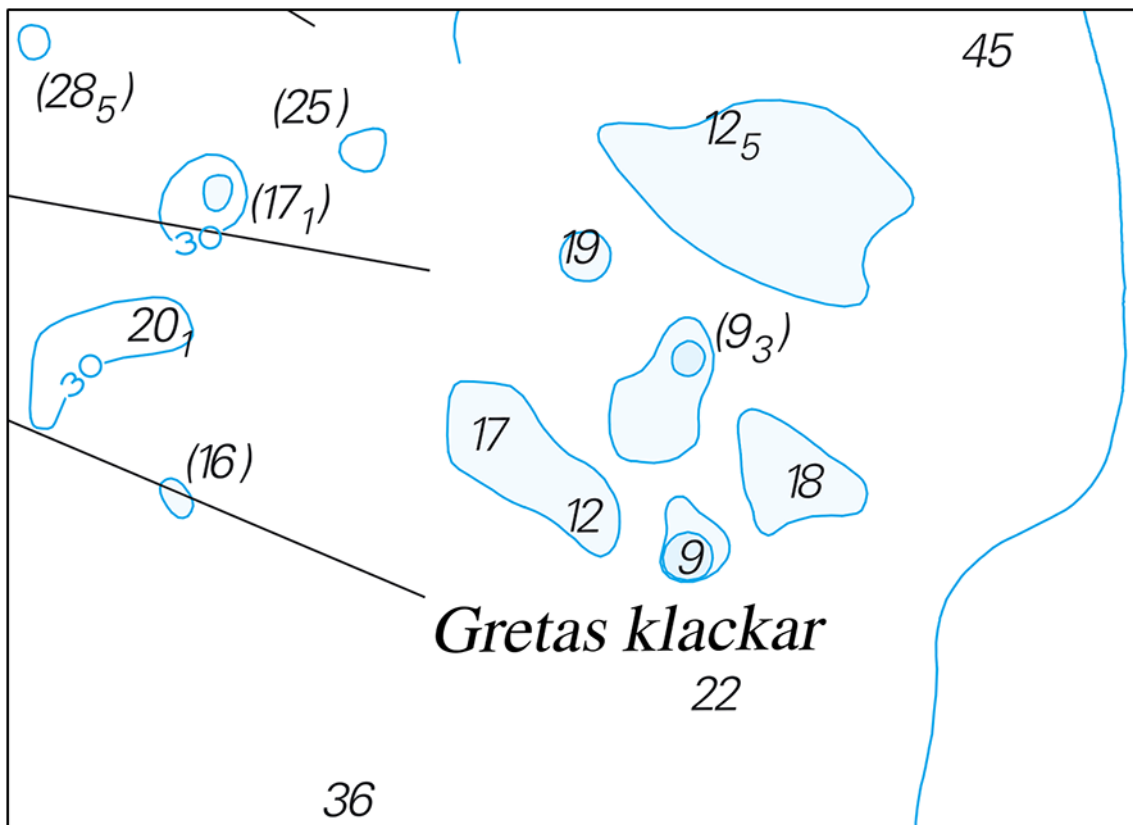
\* 13625

Chart: 5, 53

**Sweden. Sea of Bothnia. SE of Hudiksvall. E of Agön. Gretas klackar. Depths.**

|               |                                  |    |           |            |
|---------------|----------------------------------|----|-----------|------------|
| <b>Amend</b>  | 20 m depth contour               | a) | 61-31,40N | 017-47,21E |
| <b>Amend</b>  | 13 to 12,5                       | b) | 61-31,75N | 017-46,54E |
| <b>Insert</b> | 20 m depth contour with depth 19 | c) | 61-31,31N | 017-45,43E |
| <b>Amend</b>  | 10 to 9,3                        | d) | 61-30,66N | 017-46,72E |
| <b>Delete</b> | 13                               | e) | 61-29,65N | 017-46,82E |
| <b>Insert</b> | 10 m depth contour with depth 9  | f) | 61-29,65N | 017-46,82E |

Bsp Bottenhavet S 2013/s06



Gretas Klackar, SE of Hudiksvall

Sjöfartsverket. Publ. 10 januari 2019

**Sea of Åland and Archipelago Sea**

\* 13663

Chart: 536

Sweden. Sea of Åland and Archipelago Sea. Fagerön. Sandikaön. Canal Sandikafjärden - Länsösundet. Speed limit.

Starting January 15, 2019 will there be a speed limit of 3 knots in the canal between Sandikafjärden and Länsösundet.

|        |      |           |            |
|--------|------|-----------|------------|
| Insert | 3 kn | 60-13,28N | 018-26,08E |
|--------|------|-----------|------------|

Länsstyrelsen Uppsala 03FS 2019:1

Bsp Stockholm N 2018/s16, s60

Länsstyrelsen Uppsala län. Publ. 10 januari 2019

**Northern Baltic**

\* 13619

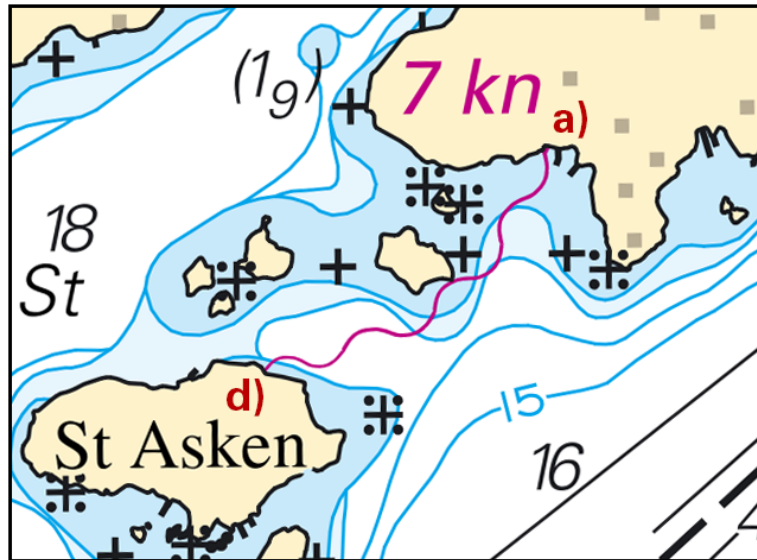
Chart: 611, 612

Sweden. Northern Baltic. Stockholm archipelago. Furusund. Stor-Asken - Furusund. Submarine cable.

Expired notices: 2017:682/12729(P)

|        |                                 |    |            |             |
|--------|---------------------------------|----|------------|-------------|
| Insert | submarine cable between a) - d) | a) | 59-39,410N | 018-54,101E |
|        |                                 | b) | 59-39,293N | 018-53,990E |
|        |                                 | c) | 59-39,248N | 018-53,820E |
|        |                                 | d) | 59-39,226N | 018-53,637E |

Bsp Stockholm N 2018/s28



Stor-Asken

Länsstyrelsen, Stockholm. Publ. 10 januari 2019

\* 13667

Chart: 621, 6211

Sweden. Northern Baltic. Oxelösund. Light Ljungskär. Sectors.

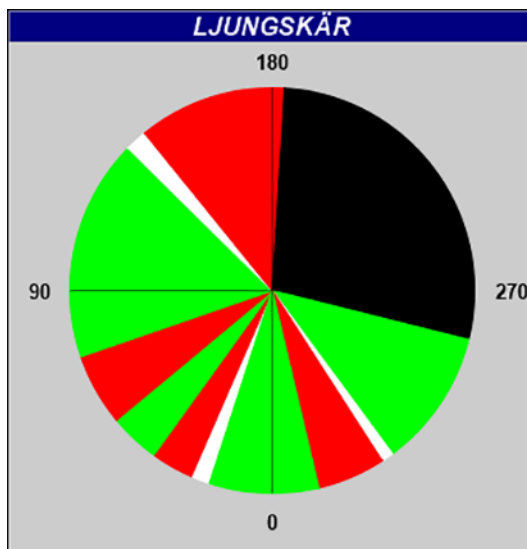
Sectors at light Ljungskär have been checked and the result is as follows:

|                 |            |             |
|-----------------|------------|-------------|
| Light Ljungskär | 58-39,127N | 017-07,709E |
|-----------------|------------|-------------|

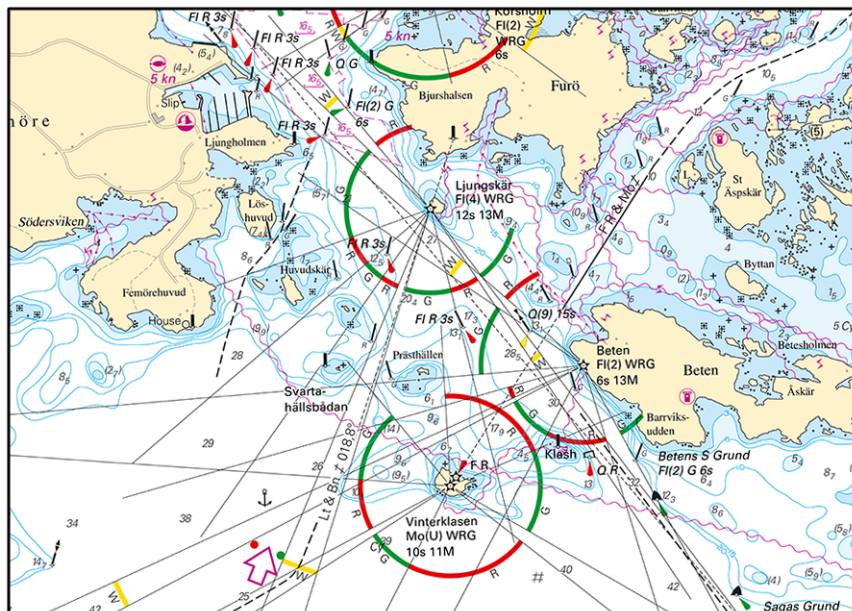
| Bearing (from sea towards light) | Colour |
|----------------------------------|--------|
| 018,1 - 023,6                    | W      |
| 023,6 - 035,8                    | R      |
| 035,8 - 050,3                    | G      |
| 050,3 - 071,0                    | R      |
| 071,0 - 134,6                    | G      |
| 134,6 - 140,9                    | W      |
| 140,9 - 183,5                    | R      |
| 183,5 - 300,0                    | Dk     |
| 300,0 - 323,6                    | G      |
| 323,6 - 327,1                    | W      |
| 327,1 - 346,7                    | R      |
| 346,7 - 018,1                    | G      |

Adm. LoL. C6820

Bsp Ostkusten 2015/s20, s21, s27, s32



Light Ljungskär



Light Ljungskär

Sjöfartsverket. Publ. 10 januari 2019

\* 13686 (T)

Chart: 61, 616, 6162, 6163, 62

**Sweden. Northern Baltic. E of Utö. Firing exercises. January 28 - 31.**

Firing exercises will be carried out within Utö firing range during stated times. The current extension of the closed area is given in the table.

Signal ammunition is used during hours of darkness.

Information during practice times VHF channel 16, call Utö skjutfält, or phone +46 8 501 570 45. Information about upcoming practice times, phone: +46 10 823 18 23, Muskö Sjöcentral.

| Date       | Time           | Range from shore |
|------------|----------------|------------------|
| January 28 | 1300 - 2300 LT | 2,6 M            |
| January 29 | 1200 - 2300 LT | 2,6 M            |
| January 30 | 0900 - 2300 LT | 2,6 M            |
| January 31 | 1200 - 2300 LT | 2,6 M            |

|                   |        |         |                          |
|-------------------|--------|---------|--------------------------|
| Position: Approx. | 58-54N | 018-20E | Utö Firing practice area |
|-------------------|--------|---------|--------------------------|

Not shown in ENC.

Bsp Stockholm S 2018/s17, s18, s19, s37

Försvarsmakten. Publ. 10 januari 2019

### South-Eastern Baltic

\* 13679 (T)

Chart: 7, 71, 83

Sweden. South-Eastern Baltic, Southern Baltic. North of Södra Midsjöbanken. Pipelaying works in DW shipping lane. Nord Stream 2.

See: 2018:735/13608(T)

Time: January 13 - 25, 2019. Note that the dates are preliminary and can be changed.

Pipelaying is planned to take place in the DW route SW of Norra Midsjöbanken early January 2019 and is expected to last approximately ten days.

The work is carried out by pipelaying vessel Solitaire (9HA4114). Guard vessel Fairplay 27.

Transport of pipes from Karlshamn to pipelaying vessel will be carried out by Standard Princes (MAQY2), Normand Naley (LCOS), Standard Provider (MCES9), Symphony Provider (PCVX) och Alegria (LAUFU8).

Due to restricted manoeuvrability of pipelaying vessel, a minimum CPA of 1 NM is requested.

|   |    |          |           |
|---|----|----------|-----------|
| starting point of pipelaying in DW route (KP 930) | a) | 55-45,7N | 016-44,8E |
| exitpoint of pipelaying in DW route (KP 890)      | b) | 55-57,1N | 017-16,4E |

Nord Stream 2. Publ. 9 januari 2019

### The Sound

\* 13659

Chart: 921

Sweden. The Sound. N of Malmö. Vikhög. Buoyage.

|        |                          |    |            |             |
|--------|--------------------------|----|------------|-------------|
| Insert | port hand spar buoy      | a) | 55-43,567N | 012-57,517E |
| Insert | starboard hand spar buoy | b) | 55-43,583N | 012-57,567E |

Bsp Sydkusten 2012/s16

Vikhögs båtklubb / Transportstyrelsen. Publ. 10 januari 2019

### Kattegat

\* 13615

Chart: 924

Sweden. Kattegat. Port of Varberg. Depths.

|        |   |            |             |
|--------|---|------------|-------------|
| Delete | maximum authorized draught in recommended track 7.5 m | 57-06,680N | 012-14,220E |
| Delete | maximum authorized draught in recommended track 10 m  | 57-06,681N | 012-14,064E |
| Insert | depth 7.7 m   | 57-06,716N | 012-14,456E |
| Insert | depth 7.3 m   | 57-06,809N | 012-14,586E |

Bsp Västkusten S 2016/s62

Sjöfartsverket. Publ. 9 januari 2019

\* 13682

Chart: 9312, 9313

Sweden. Kattegat. Göteborg. Hisingen. Wind turbines removed.



|        |              |    |           |            |
|--------|--------------|----|-----------|------------|
| Delete | wind turbine | a) | 57-42,10N | 011-48,00E |
| Delete | wind turbine | b) | 57-41,93N | 011-48,09E |
| Delete | wind turbine | c) | 57-41,64N | 011-48,00E |
| Delete | wind turbine | d) | 57-41,47N | 011-48,01E |
| Delete | wind turbine | e) | 57-41,39N | 011-48,20E |
| Delete | wind turbine | f) | 57-41,23N | 011-48,28E |
| Delete | wind turbine | g) | 57-41,02N | 011-48,29E |
| Delete | wind turbine | h) | 57-41,40N | 011-47,50E |
| Delete | wind turbine | i) | 57-41,32N | 011-47,37E |
| Delete | wind turbine | j) | 57-41,26N | 011-47,47E |
| Delete | wind turbine | k) | 57-41,11N | 011-47,88E |
| Delete | wind turbine | l) | 57-40,99N | 011-47,77E |

Bsp Västskusten S 2016/s46, s47, s54

Länsstyrelsen Västra Götaland. Publ. 9 januari 2019

## Skagerrak

\* 13685

Chart: 931, 932, 9321

**Sweden. Skagerrak. Tjörn. Rönnäng. Kalvesund. Underwater blasting completed.**

Expired notices: 2018:724/13484(T)

The works in the sound 'Kalvesund' between Rönnäng and Tjörnekalv are now completed.  
The chart will be updated following a hydrographic survey.

|           |            |             |
|-----------|------------|-------------|
| Kalvesund | 57-56,000N | 011-34,761E |
|-----------|------------|-------------|

Bsp Västskusten S 2016/s14, s37, s39

Västskustens Brygg & Transport AB. Publ. 10 januari 2019