

Notices to Mariners, SWEDEN Swedish Maritime Administration



Areas in Swedish Notices to Mariners



SJÖFARTSVERKET

Editorial office
Swedish Maritime Administration
Ufs
601 78 NORRKÖPING
Sweden
tel: 0771 630 605
e-mail: ufs@sjofartsverket.se
Publisher:
Hydrographer Patrik Wiberg

ANNOUNCEMENTS

No Announcements in this booklet.

NOTICES

Bay of Bothnia

* 13671

Chart: 41, 414

Sweden. Bay of Bothnia. Luleå. Farstugrunden. Foul ground.

Insert	foul ground	65-22,3N	022-45,1E
--------	-------------	----------	-----------

Bsp Bottenviken 2018/s05, s25

Sjöfartsverket. Publ. 3 januari 2019

Northern Baltic

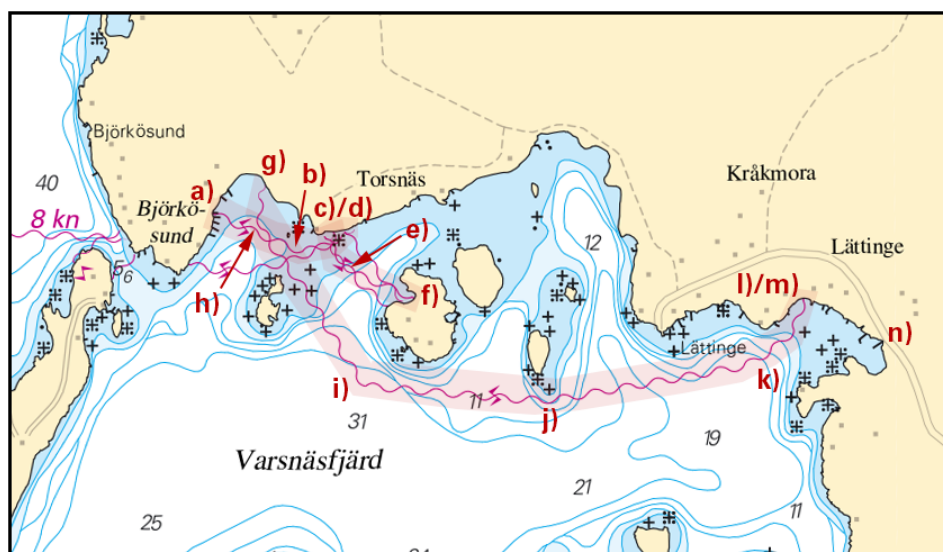
* 13472

Chart: 616, 6163

Sweden. Northern Baltic. Ornö. Björkö-sund. Varsnäs-fjärd. Submarine cables. Overhead cable removed.

Insert	submarine power cable between a) - d) and between d) - f)	a)	59-02,847N	018-20,798E
		b)	59-02,796N	018-21,011E
		c)	59-02,805N	018-21,091E
		d)	59-02,820N	018-21,093E
		e)	59-02,780N	018-21,094E
		f)	59-02,736N	018-21,299E
Insert	submarine power cable between g) - m)	g)	59-02,881N	018-20,920E
		h)	59-02,834N	018-20,914E
		i)	59-02,624N	018-21,164E
		j)	59-02,601N	018-21,624E
		k)	59-02,647N	018-22,153E
		l)	59-02,698N	018-22,258E
		m)	59-02,728N	018-22,269E
Delete	overhead power cable	n)	59-02,665N	018-22,458E

Bsp Stockholm M 2018/s43, Bsp Stockholm S 2018/s10, s34, s36



Submarine power cables, Varsnäs-fjärd

Vattenfall Eldistribution AB. Publ. 2 januari 2019

* 13675 (T)

Chart: 6141, 6142

Sweden. Northern Baltic. Port of Stockholm. Lilla Värtan. Frihamnsbassängen. Dredging. Dumping of dredge spoil.

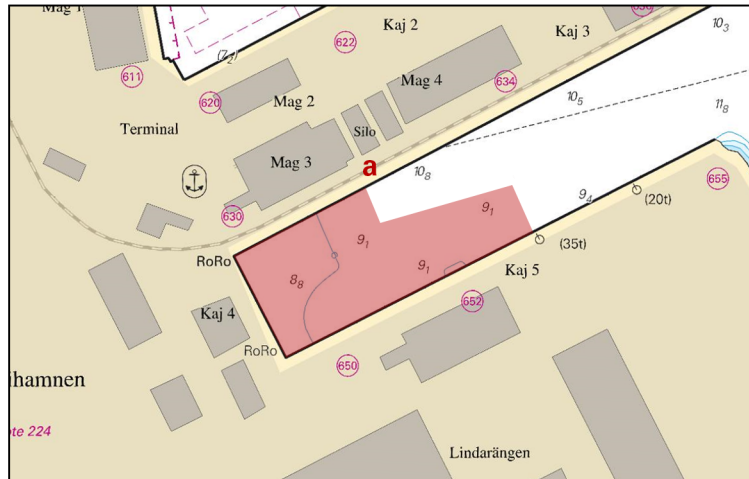
Time: January - February 2019.

Dredging in progress according to chartlet.

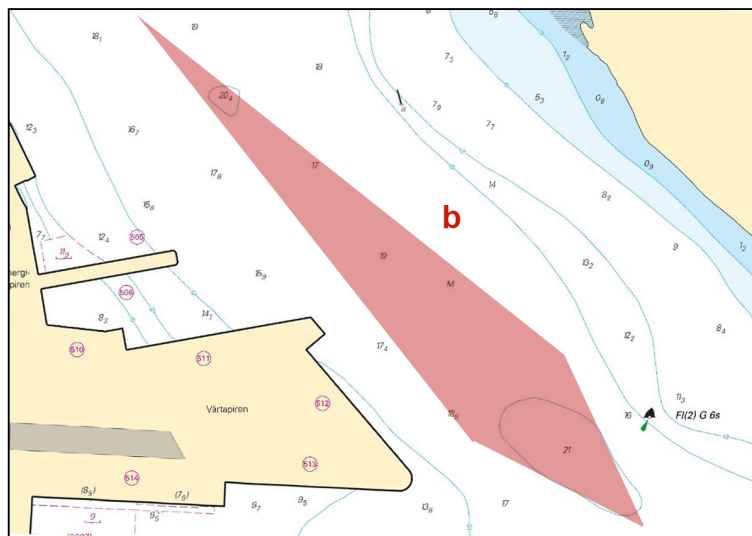
Contact: Working boat Jarl, VHF channel 16, phone +46 (0) 73 385 8287, +46 (0) 70 450 7145

dredging area	a)	59-20,55N	018-07,40E
dumping area for dredge spoil	b)	59-21,15N	018-07,30E

Bsp Mälaren - Hjälmarén 2016/s52, s53, Bsp Stockholm M 2018/s06, s07, s09, s10



Dredging area - Frihamnsbassängen



Dumping area - dredge spoil, Värtan

Stockholms Hamnar. Publ. 3 januari 2019

Lake Mälaren and Södertälje Canal

* 13677

Chart: 111

Sweden. Lake Mälaren and Södertälje Canal. Lambarfjärden. Lambarön. Hässelby. Prohibition of breaking ice channel.

From February 1, 2019 it is prohibited to break ice channel in the sound between Lambarön and Hässelby villastad when there is solid ice.

Insert	See note 289	59-21,92N	017-48,32E
--------	--------------	-----------	------------

Bsp Mälaren - Hjälmarén 2016/s63

Note 289**BREAKING OF ICE CHANNEL PROHIBITED**

When there is solid ice, it is prohibited to break ice in the sound between Lambarön and Hässelby villastad.

FÖRBUD MOT BRYTANDE AV ISRÄNNA

När fast is ligger är det förbjudet att bryta isränna i sundet mellan Lambarön och Hässelby villastad.

Note 289

Länsstyrelsen Stockholm. Publ. 3 januari 2019

Central Baltic*** 13676 (T)****Chart: 71****Sweden. Central Baltic. E of Öland. Oil recovery from wreck. Oil spill booms.**

Time: Until further notice

Oil booms have been placed and are marked with two orange buoys equipped with radar reflectors.

Wreck	56-48,28N	017-11,97E
-------	-----------	------------

Bsp Kalmarsund 2014/s07

Kustbevakningen. Publ. 3 januari 2019

Southern Baltic*** 13656 (T)****Chart: 7, 74, 742, 743, 8, 83****Sweden. Southern Baltic. S of Åhus. Ravlunda. Firing exercises. January 22 - 30, 2019.**

Position: Approx.	55-46N	014-20E	Firing restriction area R34 RAVLUNDA
-------------------	--------	---------	--------------------------------------

Restriction area R34 will be closed for traffic during stated times.

During practice orange quick light, Q Or, is shown from shore.

For further information, call +46 44 35 10 32.

Date	Hours	Range
January 22 - 23	0900 - 1600 LT	6.8 M
January 24	0900 - 2000 LT	6.8 M
January 25 - 27	0900 - 1600 LT	5.4 M
January 28	0900 - 2000 LT	5.4 M
January 29 - 30	0900 - 1600 LT	5.4 M

Not shown in ENC.

Bsp Hanöbukten 2018/s06, s07, s24, s25, s26, s27, s28, s29, s30, s31, s32, s33, Bsp Sydkusten 2012/s06, s07, s29

Försvarsmakten, Södra Skånska Regementet, Södra Sandby. Publ. 3 januari 2019

*** 13657 (T)****Chart: 74, 83, 839****Sweden. Southern Baltic. E of Ystad. Kabusa. Firing exercise. January 28 - 31.**

Position: Approx.	55-23N	013-57E	Firing restricted area R55A KABUSA
-------------------	--------	---------	------------------------------------

Restricted area R55A will be closed for vessels during stated times.

For further information call "Kabusa skjutfält" on VHF Ch 16 or call +46 411-55 06 52/+46 10 829 2805.

Date	Hours	Range
January 28	1200 - 1700 LT	3,8 M
January 29 - 30	0900 - 1700 LT	3,8 M
January 31	0900 - 2000 LT	3,8 M

Not shown in ENC.

Bsp Sydkusten 2012/s06, s27, s28

Kattegat

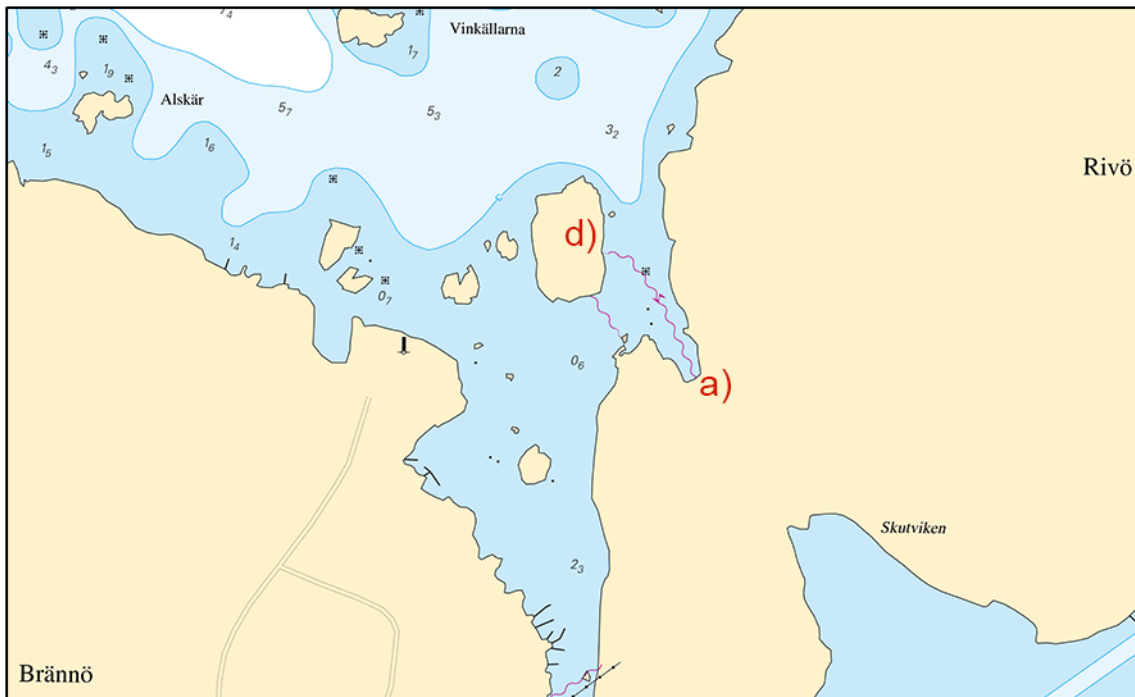
* 13649

Chart: 9312, 9313

Sweden. Kattegat. Gothenburg archipelago. Brännö. Rivö - Koggholmen. Submarine power cable.

Insert	submarine power cable between position a) - d)	a)	57-39,230N	011-47,241E
		b)	57-39,270N	011-47,206E
		c)	57-39,292N	011-47,173E
		d)	57-39,293N	011-47,152E

Bsp Västkusten S 2016/s46, s55



Rivö

Kraftringen. Publ. 2 januari 2019

Lake Vänern and Trollhätte Canal

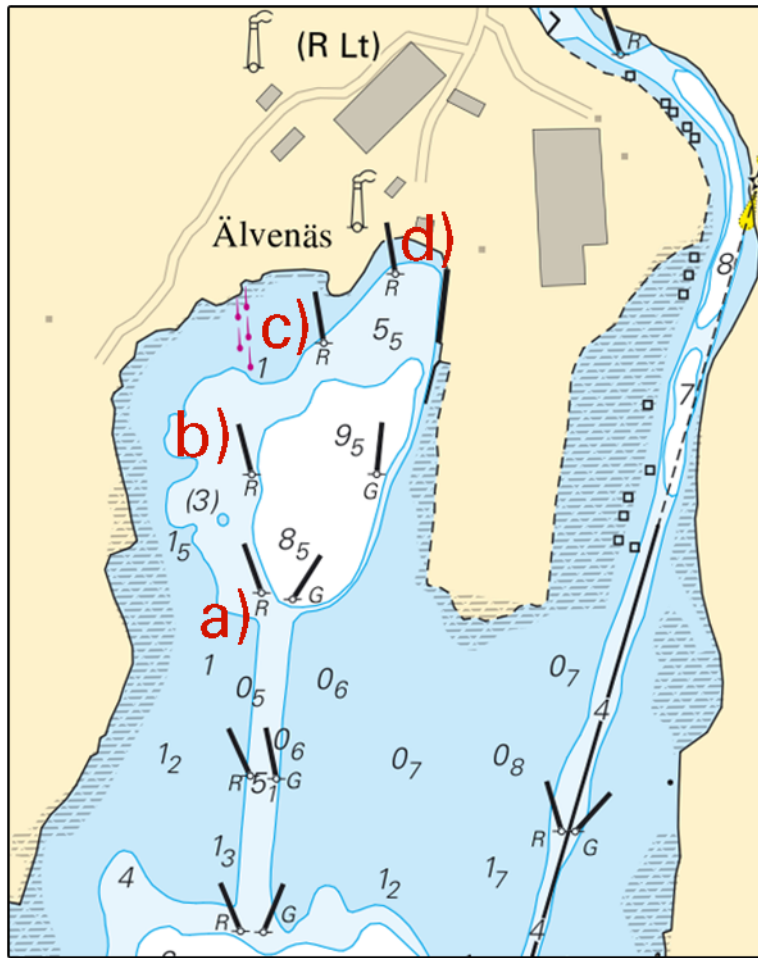
* 12850

Chart: 131

Sweden. Lake Vänern and Trollhätte Canal. Åsfjorden. Älvenäs. Buoyage.

Insert	port hand spar buoy	a)	59-21,860N	013-10,655E
Insert	port hand spar buoy	b)	59-21,945N	013-10,640E
Insert	port hand spar buoy	c)	59-22,040N	013-10,740E
Insert	port hand spar buoy	d)	59-22,090N	013-10,840E

Bsp Vänern 2018/s47



Älvenäs