

## Notices to Mariners, SWEDEN Swedish Maritime Administration



### Areas in Swedish Notices to Mariners



**SJÖFARTSVERKET**

Editorial office  
Swedish Maritime Administration  
Ufs  
601 78 NORRKÖPING  
Sweden  
tel: 0771 630 605  
e-mail: [ufs@sjofartsverket.se](mailto:ufs@sjofartsverket.se)  
Publisher:  
Hydrographer Patrik Wiberg



**ANNOUNCEMENTS**

\* 13243

Chart: 6142, 743

**New print of charts. New edition of chart 6142 and 743.**

A new print of the following nautical charts are available from August 2018:

Chart	Edition
6142	11.0 NEW EDITION
743	3.0 NEW EDITION

A NEW EDITION is a print of an existing chart, containing changes significant to navigation which are not possible to fully describe in the Swedish NtM.

*Sjöfartsverket, Norrköping. Publ. 1 september 2018***NOTICES****Bay of Bothnia**

\* 13389 (T)

Chart: 41, 4101, 414

**Sweden. Bay of Bothnia. SE of Luleå. Junkön. Firing exercises. September 24 - 27 and October 1 - 4, 2018.**

Gunnery exercises will be carried out within Junkön firing range during stated times.

The area is supervised. Firing will be discontinued when vessels passing through the area.

Further information during firing: +46 70 547 35 15 or +46 70 639 53 22.

Junkön firing range	65-25N	022-20E
---------------------	--------	---------

Date	Time
September 24 - 27	0730 - 1630 LT
October 1 - 4	0730 - 1630 LT

Not shown in ENC.

Bsp Bottenviken 2018/s24, s27, s62, s63

*Försvarsmakten. Publ. 4 september 2018***Northern Baltic**

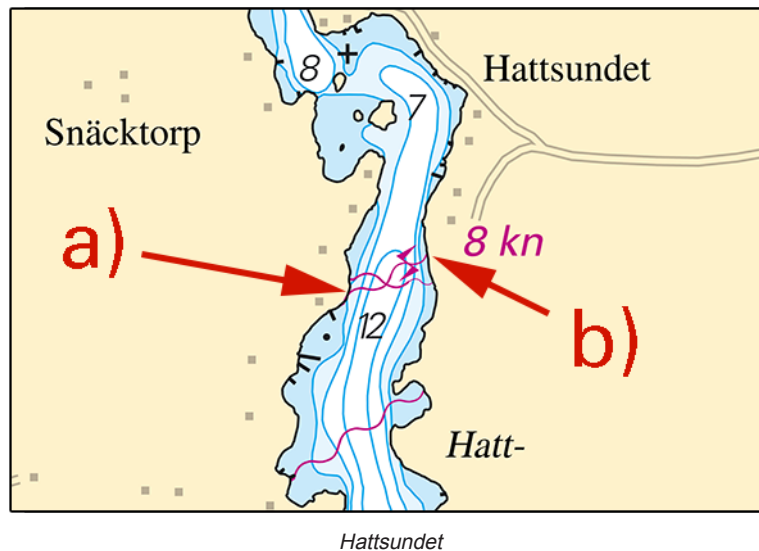
\* 12820

Chart: 611

**Sweden. Northern Baltic. Norrtälje. Hattsundet. Submarine power cable.**

Insert	submarine powercable between a) - b)	a)	59-45,48N	018-53,02E
		b)	59-45,55N	018-53,25E

Bsp Stockholm N 2018/s23



Hattssundet  
Vattenfall Services Nordic AB Publ. 4 september 2018

\* 13198

Chart: 6143

Sweden. Northern Baltic. Stockholm archipelago. Storholmen - Träskö. Depths.

Changed depths following a hydrographic survey.

Amend	4,2 till 3,9	a)	59-23,452N	018-41,658E
Amend	8,9 till 6,2	b)	59-23,142N	018-41,954E
Amend	(4,9) to (4,5)	c)	59-22,967N	018-47,764E

Bsp Stockholm M 2018/s17, s18, Bsp Stockholm N 2018/s44, s45

Sjöfartsverket. Publ. 4 september 2018

\* 13375

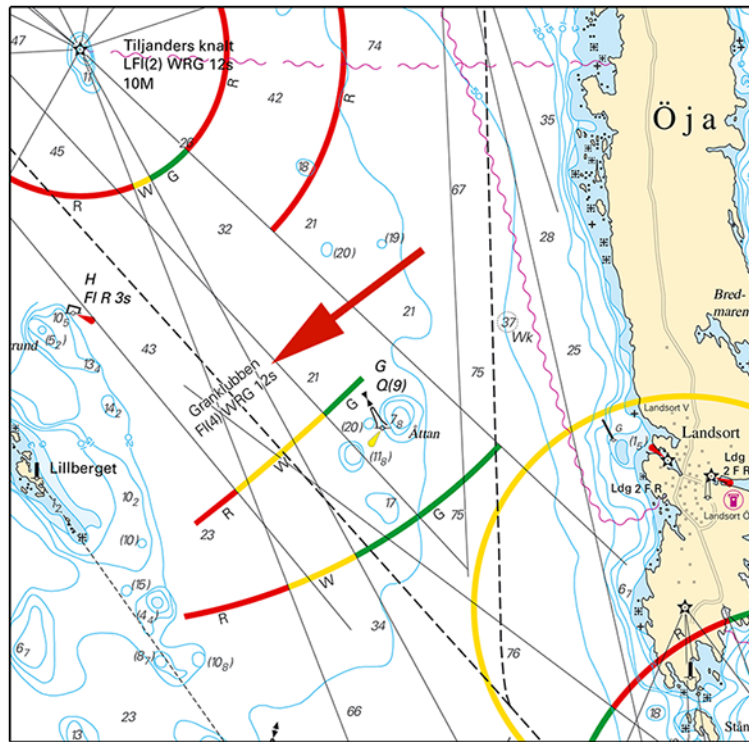
Chart: 6171

Sweden. Northern Baltic. Öja. Light Granklubben. Error in character of sector arc.

Amend	light character on sector arc to "Granklubben FI(4) WRG 12s 13M"	a)	58-44,75N	017-50,24E
-------	--	----	-----------	------------

Adm. LoL C6675

Bsp Mälaren - Hjälmaran 2016/s39, Bsp Stockholm S 2018/s25, s33



Granklubben

Sjöfartsverket, Norrköping Publ. 4 september 2018

\* 13391 (T)

Chart: 621, 6212

Sweden. Northern Baltic. Bråviken. Skenäs - Säter. Works with new supply pipeline.

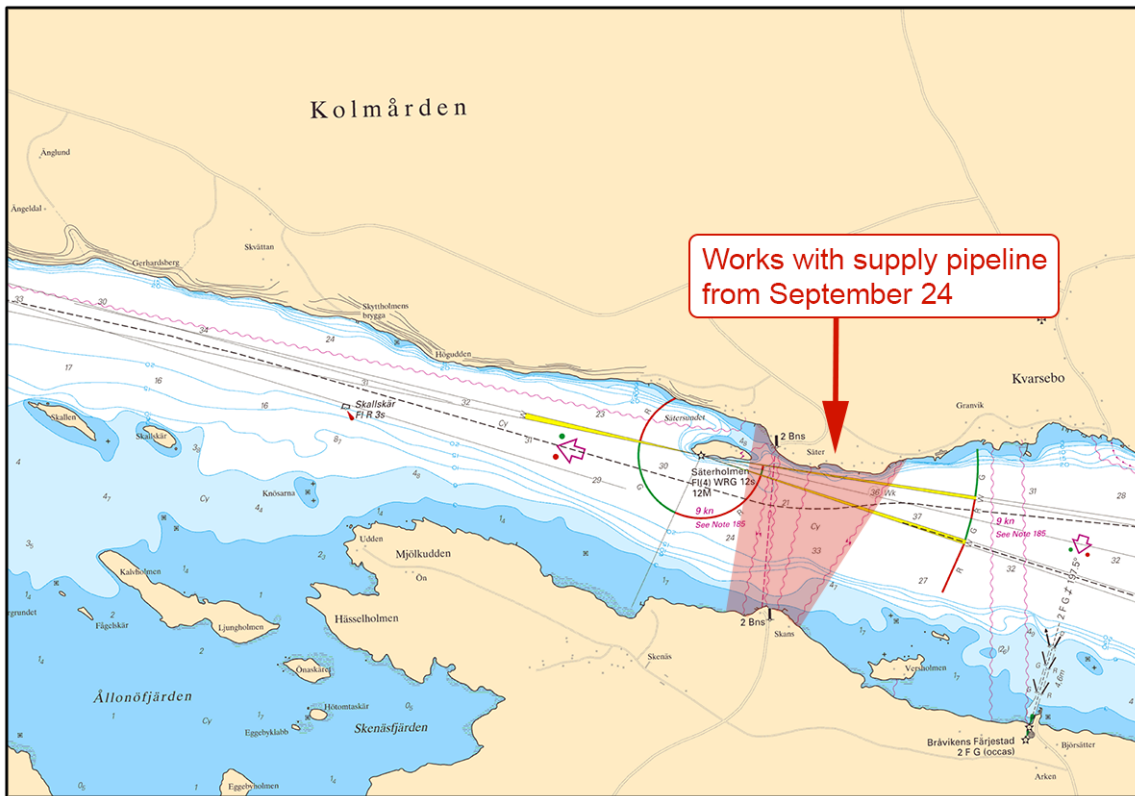
Expired notices: 2018:715/13265(T)

Time: From September 24, 2018

Works with new supply pipelines will be carried out between Skenäs and Säter. Mariners are advised to pass with caution.

Skenäs	58-37,722N	016-35,691E
Säter	58-38,224N	016-35,906E

Bsp Ostkusten 2015/s25



Works with supply pipeline

Peab Anläggning AB. Publ. 5 september 2018

**Southern Baltic**

\* 13347 (T)

Chart: 74, 742, 743, 83

Sweden. Southern Baltic. Approach to Åhus. Rinkaby. Firing exercises. September 18 -27.

Position: Ap.	55-56N	014-22E	Firing restriction area R38A RINKABY
---------------	--------	---------	--------------------------------------

The restriction area R38A will be closed for vessels during times given in the table. The exercises will be interrupted to allow passage of merchant vessels.

During practice orange quick light, Q Or, is shown from shore.

For further information call +46 44 24 25 02 (only during firings).

Date	Hours	Range
September 18 - 20	0900 - 1600 LT	1,9 M
September 21 - 21	0900 - 2200 LT	1,9 M
September 23	0900 - 1200 LT	1,9 M
September 25 - 27	0900 - 1600 LT	1,9 M

Not shown in ENC.

Bsp Hanöbukten 2018/s24, s25, s26

Försvarsmakten, Södra Skånska Regementet, Södra Sandby. Publ. 31 augusti 2018

\* 13359 (T)

Chart: 2, 7, 74, 8, 83, 839, 921

Denmark, Sweden. Southern Baltic. W of Bornholm. TSS In Bornholmogat. Baltic Pipe. Geotechnical drillings.

See: 2017:680/12693(T)

Time: Until December 31, 2018

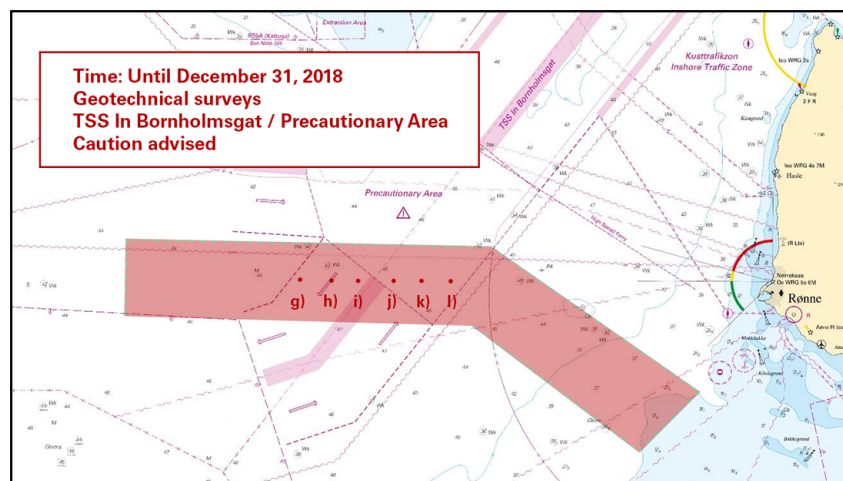
Additional geotechnical drillings for the Baltic Pipe project will be done at specified locations along a corridor which partly lie inside 'TSS In Bornholmogat'.

Survey vessels	Callsign
IMOR	SNKB
MINTAKA I	HO6142
GLOMAR VANTAGE	HO3057

Note: A NAVTEX warning will be issued when surveys are performed inside the TSS area incl. Precautionary Area.

a)	55-06,287N	013-51,326E	
b)	55-06,298N	014-17,177E	
c)	55-06,082N	014-19,827E	
d)	55-01,758N	014-34,583E	
e)	55-06,300N	014-05,426E	TSS In Bornholmogat and Precautionary Area
f)	55-06,301N	014-07,777E	TSS In Bornholmogat and Precautionary Area
g)	55-06,302N	014-10,127E	TSS In Bornholmogat and Precautionary Area
h)	55-06,301N	014-12,477E	TSS In Bornholmogat and Precautionary Area
i)	55-06,300N	014-14,827E	TSS In Bornholmogat and Precautionary Area
j)	55-06,298N	014-17,177E	TSS In Bornholmogat and Precautionary Area

Bsp Sydkusten 2012/s23, s24, s25, s26, s27, s28, s30



Additional geotechnical drillings

Ramböll AB. Publ. 5 september 2018

\* 13385

Chart: 742

Sweden. Southern Baltic. Sölvesborg. Leading lights on Rådmansholmen.

Expired notices: 2018:692/12901(T)

Leading lights on Rådmansholmen are fully operational.

Leading lights Rådmansholmen	56-02,7N	014-35,4E
------------------------------	----------	-----------

Adm LoL: C7556.1

Bsp Hanöbukten 2018/s52

Sölvesborgs Stuveri och Hamn AB. Publ. 31 augusti 2018

## The Sound

\* 13384

Chart: 922

Sweden. The Sound. N of Helsingborg. Domsten. Grollegrund. Spar buoy.

Expired notices: 2018:695/12957(T)

The west cardinal spar buoy at Grollegrund is back in position.

West cardinal spar buoy	56-06,67N	012-34,80E
-------------------------	-----------	------------



Not shown in ENC.

Bsp Sydkusten 2012/s11

*Sjöfartsverket, Norrköping. Publ. 31 augusti 2018*

## Kattegat

\* 13362 (T)

Chart: 924

### Sweden. Kattegat. Falkenberg. Leading lights moved.

Expired notices: 2018:713/13274(T)

The leading lights in Falkenberg will be moved to new positions. They will be unlit and the leading line will be unreliable during some time before the new positions have been properly established.

September 10 - 16, works done on the lower leading lights.

They will be unlit and the leading lines will be unreliable during some time before the new positions have been confirmed.

Upper leading light, west	a)	56-53,583N	012-28,728E
Upper leading light, east	b)	56-53,570N	012-28,771E
Lower leading light, west	c)	56-53,399N	012-28,515E
Lower leading light, east	d)	56-53,371N	012-28,541E

Not shown in ENC.

Bsp Västkusten S 2016/s27, s66

*Falkenbergs Terminal. Publ. 31 augusti 2018*

## Skagerrak

\* 13266

Chart: 934

### Sweden. Skagerrak. NW of Fjällbacka. V om Musön. Stora Skårholmen. Shoal.

<b>Insert</b>	underwater rock		a)	58-37,571N	011-12,809E
<b>Insert</b>	underwater rock		b)	58-37,558N	011-12,833E
<b>Amend</b>	3 m depth contour	(as shown in chartlet)	c)	58-37,555N	011-12,814E
<b>Amend</b>	3 m depth contour	(as shown in chartlet)	d)	58-37,556N	011-13,081E
<b>Delete</b>	(1,7)		e)	58-37,617N	011-12,959E

Bsp Västkusten N 2016/s13





Shoal

Sjöfartsverket. Publ. 31 augusti 2018

13343 (P)

Chart: 933, 9331

Sweden. Skagerrak. W of Lysekil. Sörgrundsberget. Special light buoy.

A special buoy will be established in the position below between September 10 - 16, 2018. The position is approximate.

special light buoy FI Y 3s	58-17,34N	011-10,78E
----------------------------	-----------	------------

Bsp Västkusten N 2016/s18, s27

Technical University of Denmark. Publ. 31 augusti 2018

### Lake Vänern and Trollhätte kanal

\* 13371

Chart: 1353

Sweden. Lake Vänern and Trollhätte kanal. Trollhättan. Trollhättan locks. Locks closed September 22 - 29, 2018.

See: 2018:715/13267(T)

Time: September 22, 0600 LT - September 29, 0500 LT.

In relation to the works with the tunnel Marieholmstunneln in Gothenburg, the locks in Trollhättan will be closed for all traffic during the stated times due to maintenance.

Trollhättan locks	58-15,904N	012-15,283E
-------------------	------------	-------------

Bsp Göta kanal 2011/s44, s45

Sjöfartsverket. Publ. 31 augusti 2018