

## Notices to Mariners, SWEDEN Swedish Maritime Administration



### Areas in Swedish Notices to Mariners



**SJÖFARTSVERKET**

Editorial office  
Swedish Maritime Administration  
Ufs  
601 78 NORRKÖPING  
Sweden  
tel: 0771 630 605  
e-mail: [ufs@sjofartsverket.se](mailto:ufs@sjofartsverket.se)  
Publisher:  
Hydrographer Patrik Wiberg



## ANNOUNCEMENTS

No Announcements in this booklet.

## NOTICES

### Bay of Bothnia

\* 13363

Chart: 4, 41, 411, 412

Sweden. Bay of Bothnia. SW of Haparanda. Light 'Malören'.

Expired notices: 2017:672/12523(T)

Light 'Malören' is operating on normal power and range is restored.

Light 'Malören'	65-31,69N	023-33,41E	LFI(2) 12s WRG 14M
-----------------	-----------	------------	--------------------

Adm. LoL C5710

Bsp Bottenviken 2018/s05, s15

*Sjöfartsverket. Publ. 24 augusti 2018*

### Sea of Åland and Archipelago Sea

\* 13361 (T)

Chart: 536, 61, 611, 619

Sweden. Sea of Åland and Archipelago Sea. E of Vaddö. Firing exercise August 30, 2018.

Position: Approx.	59-58N	018-54E	Vaddö Firing practice area
-------------------	--------	---------	----------------------------

Firing exercises will be carried out at Vaddö firing range during times listed below. During these times the charted danger area "R 15A" is closed within a distance of 3 M from shore.

Further information: Tel +46 10 823 65 02 or VHF channel 16, call Vaddö Skjutfält.

Date	Time
August 30	1200 - 1600 LT

Not shown in ENC.

Bsp Stockholm N 2018/s04, s05, s06, s08, s20, s21

*Försvarsmakten. Publ. 24 augusti 2018*

### Northern Baltic

\* 13057 (T)

Chart: 6142

Sweden. Northern Baltic. Stockholm archipelago. W of Vaxholm. Tallaröfjärden. Powerboat event. Closed area.

Time: September 8, 0800 - 1700 LT.

Reserve time: September 9, 0800 - 1700 LT.

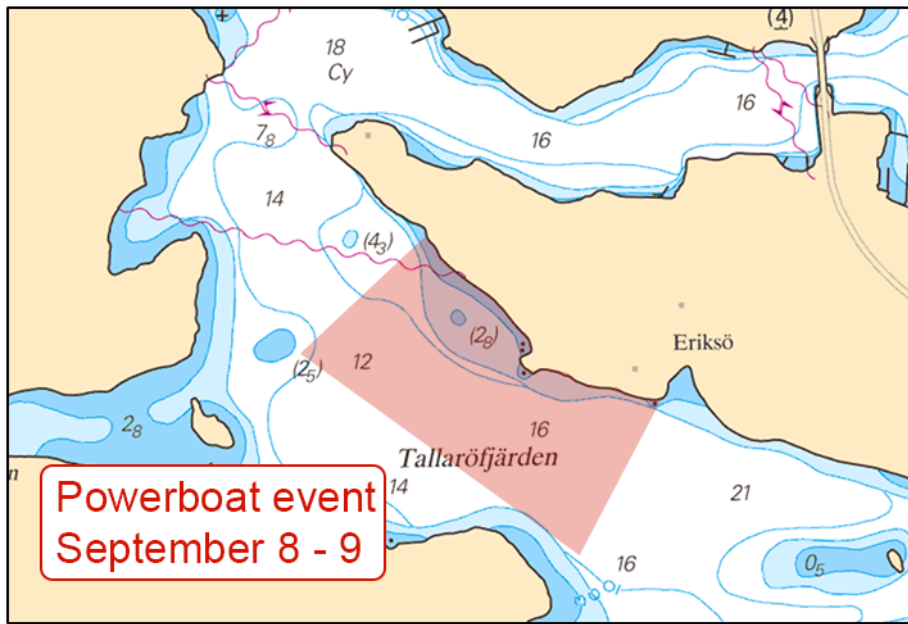
Tallaröfjärden will be closed for all vessels due to powerboat event.

Passage through the area will be possible after contact with safety boats in the area.

Tallaröfjärden	59-24,1N	018-18,1E
----------------	----------	-----------

Not shown in ENC.

Bsp Stockholm M 2018/s14, s46, Bsp Stockholm N 2018/s42



Tallaröfjärden

Länsstyrelsen, Stockholm. Publ. 30 augusti 2018

\* 13364

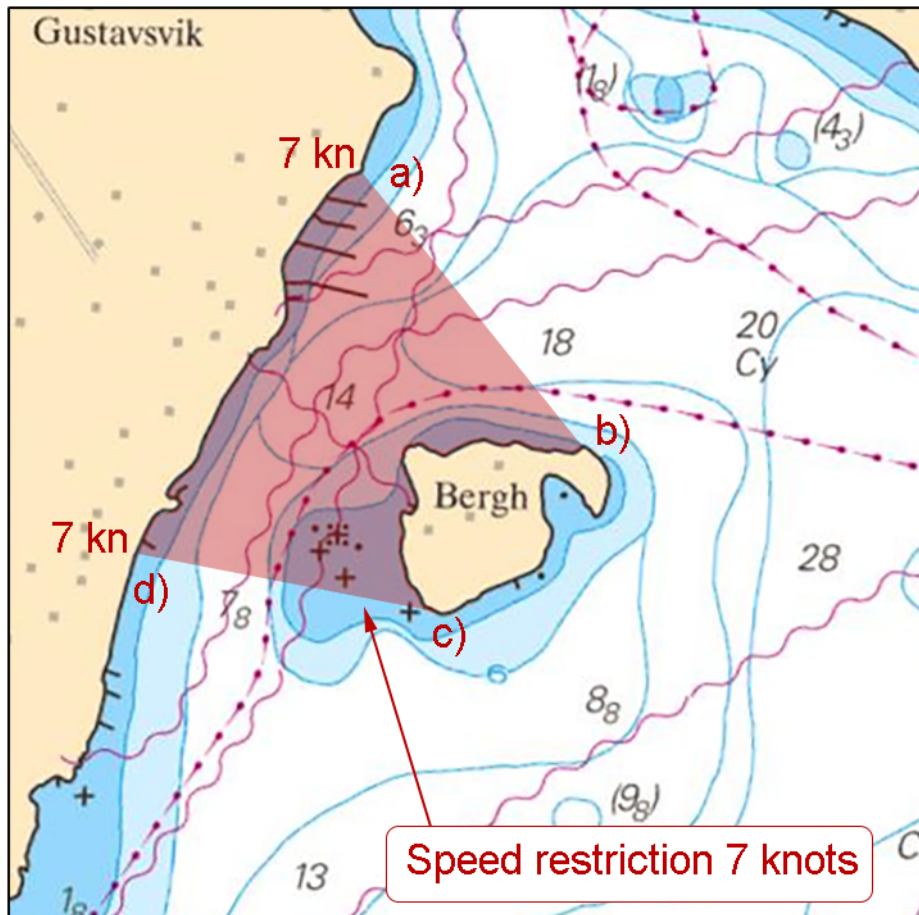
Chart:

Sweden. Northern Baltic. Stockholm archipelago. Baggensfjärden. Bergholmen. Speed restriction 7 knots.

See: 2017:640/11916

<b>Insert</b>	speed restriction 7 knots between a) - d)	a)	59-19,370N	018-18,745E
		b)	59-19,167N	018-19,068E
		c)	59-19,047N	018-18,868E
		d)	59-19,083N	018-18,437E
<b>Insert</b>	text '7 kn' at a) and d)			

Bsp Stockholm M 2018/s20



Bergholmen. Speed restriction

Länsstyrelsen, Stockholm. Publ. 30 augusti 2018

\* 13368 (T)

Chart: 616, 6162, 617, 6171

Sweden. Northern Baltic. Nynäshamn. Mysingen. Danziger gatt. Gårdsfjärden. Sailing race.

Time: September 1, 2018. 1000 - 1800 LT.

A sailing race with approximately one hundred sailing boats will take place in the area marked in the chartlet.

Start and finish at Nynäshamn marina.

Competition board will maintain watch on VHF channel 16 and 68. Working channel for safety boats will be VHF channel 77.

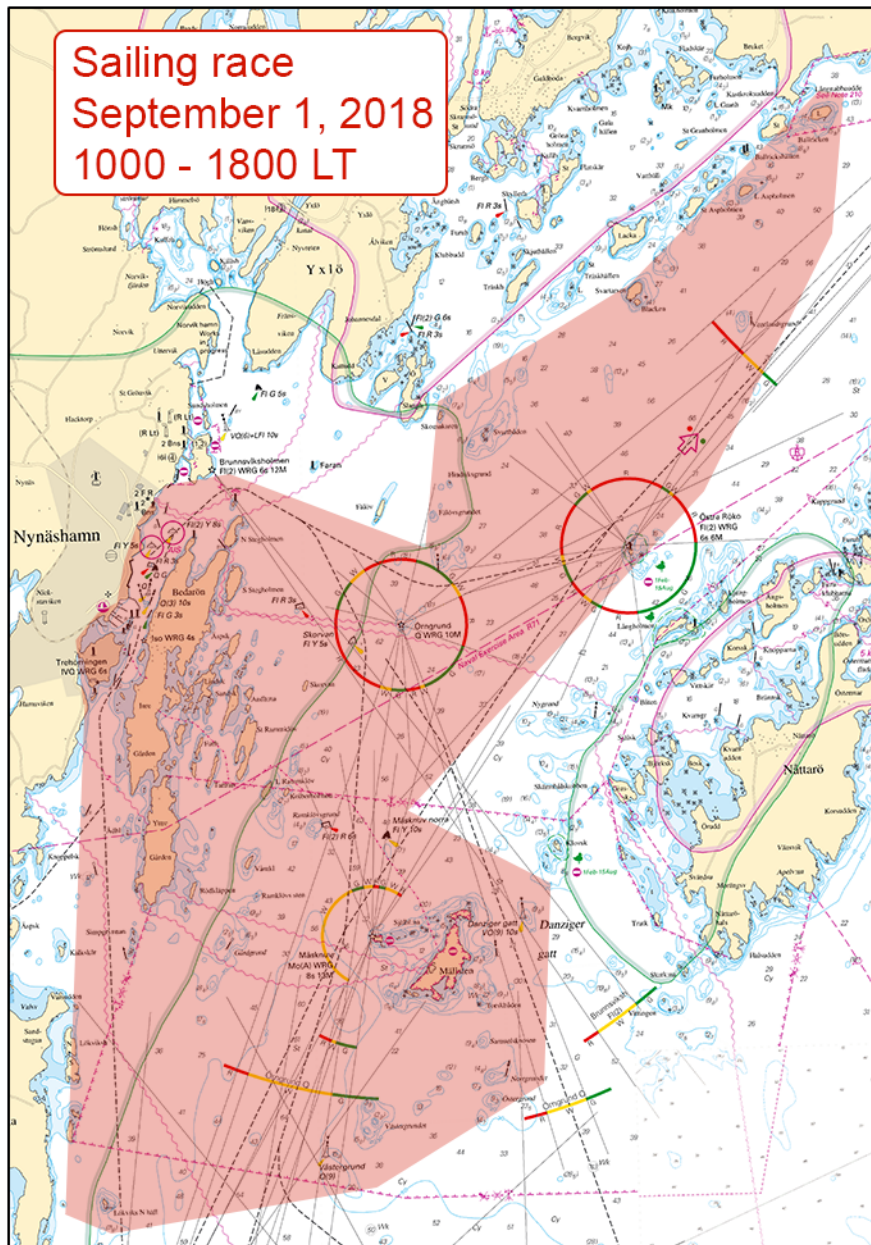
Nynäshamn Marina	58-54,03N	017-57,17E
------------------	-----------	------------

<http://www.nynashamnyachtclub.se/2018-hyundai-cup/>

Not shown in ENC.

Bsp Stockholm S 2018/s13, s19, s20, s21, s22, s26, s27, s35, s38





Nynäshamn, sailing race

Nynäshamn Segelsällskap. Publ. 29 augusti 2018

\* 13372 (T)

Chart: 6142

Sweden. Northern Baltic. Stockholm archipelago. Baggensfjärden. Gustavsberg. Swimming competition.

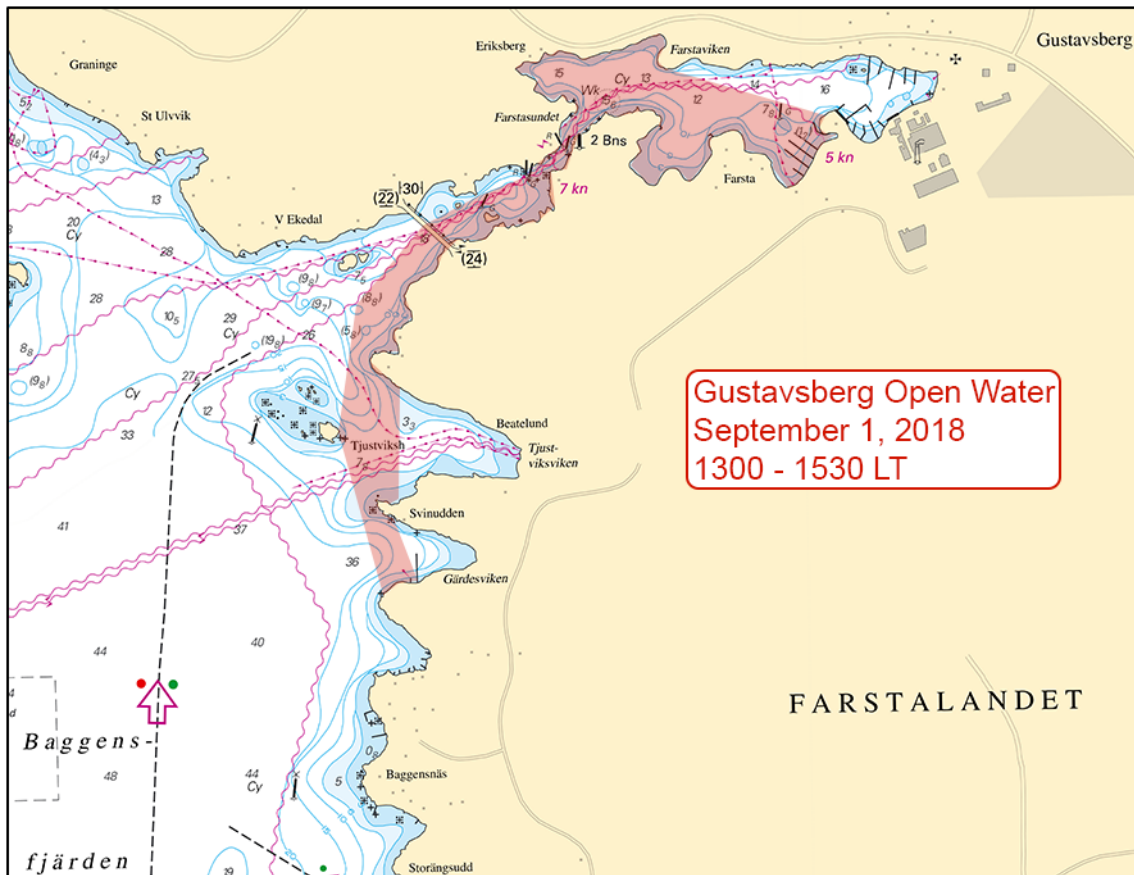
Time: September 1, 2018. 1300 - 1530 LT.

The swimming competition 'Gustavsberg Open Water' starts in the northwestern part of Baggensfjärden, and ends in Farstaviken. Mariners are advised to pass the area with caution, preferably in contact with the safety boats in the area.

Gustavsberg Open Water	59-19,33N	018-21,21E
------------------------	-----------	------------

Not shown in ENC.

Bsp Stockholm M 2018/s20, s21, s55



Gustavsberg Open Water

Gustavsberg Open Water. Publ. 30 augusti 2018

## Lake Mälaren and Södertälje kanal

\* 13302 (T)

Chart: 111

Sweden. Lake Mälaren and Södertälje kanal. Lake Mälaren. Lovön. Lambarfjärden. Kanaan. Sailing competition for dinghies.

Time: September 15, 2018

Lambarfjärden 1000 - 1700 LT

Kanaan 1000 - 1400 LT

A dinghy sailing with an estimated 130 participants will be held at two locations as shown on the chartlet.

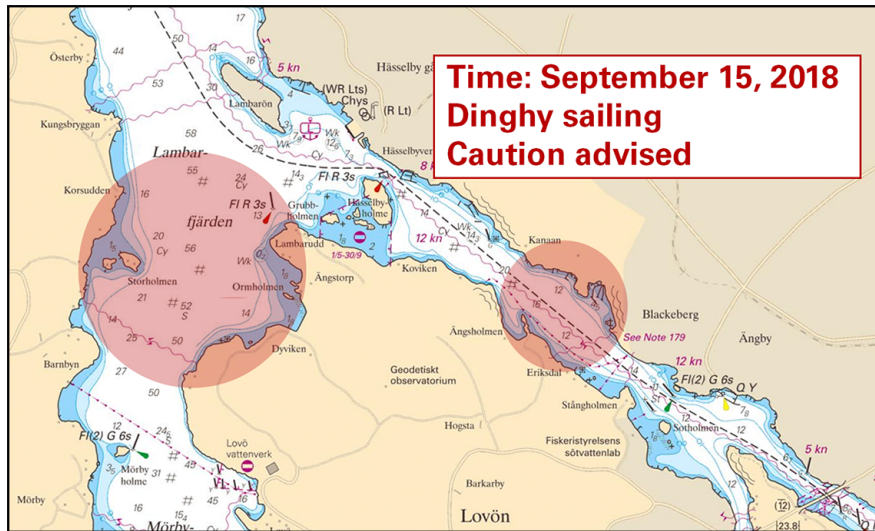
The event coordinating team and the safety boats will maintain watch on VHF Ch 72.

Mariners are requested to pass with caution.

Lambarfjärden	a)	59-20,981N	017-47,912E
Kanaan	b)	59-20,838N	017-51,662E

Not shown in ENC.

Bsp Mälaren - Hjälaren 2016/s48, s49



Dinghy sailing

Kvarnvikens Båtsällskap och Jolleseglarna. Publ. 29 augusti 2018

**Central Baltic**

\* 13366

Chart: 624

Sweden. Central Baltic. Flivik approach. Light Vinökråkan.

Amend	light character on leading light Vinökråkan to FI WRG 3s	57-30,80N	016-44,15E
-------	--	-----------	------------

Adm. LoL: C7130

Bsp Kalmarsund 2014/s10, s12

Sjöfartsverket. Publ. 30 augusti 2018

**Southern Baltic**

\* 13352 (T)

Chart: 7, 74, 742, 743, 8, 83, 839

Sweden. Southern Baltic. Ravlunda. Firing exercise. Temporary expanded military exercise area. September 17 - 21, 2018.

Position: Approx.	55-46N	014-20E	Firing restriction area R34 Ravlanda
-------------------	--------	---------	--------------------------------------

During stated time, firing exercises will be performed in the marked out areas in the chartlets. It will effect the waters of Hanöbukten. Area will be closed for traffic during the stated times. A military vessel will be in the area during the exercises.

The area is prohibited.

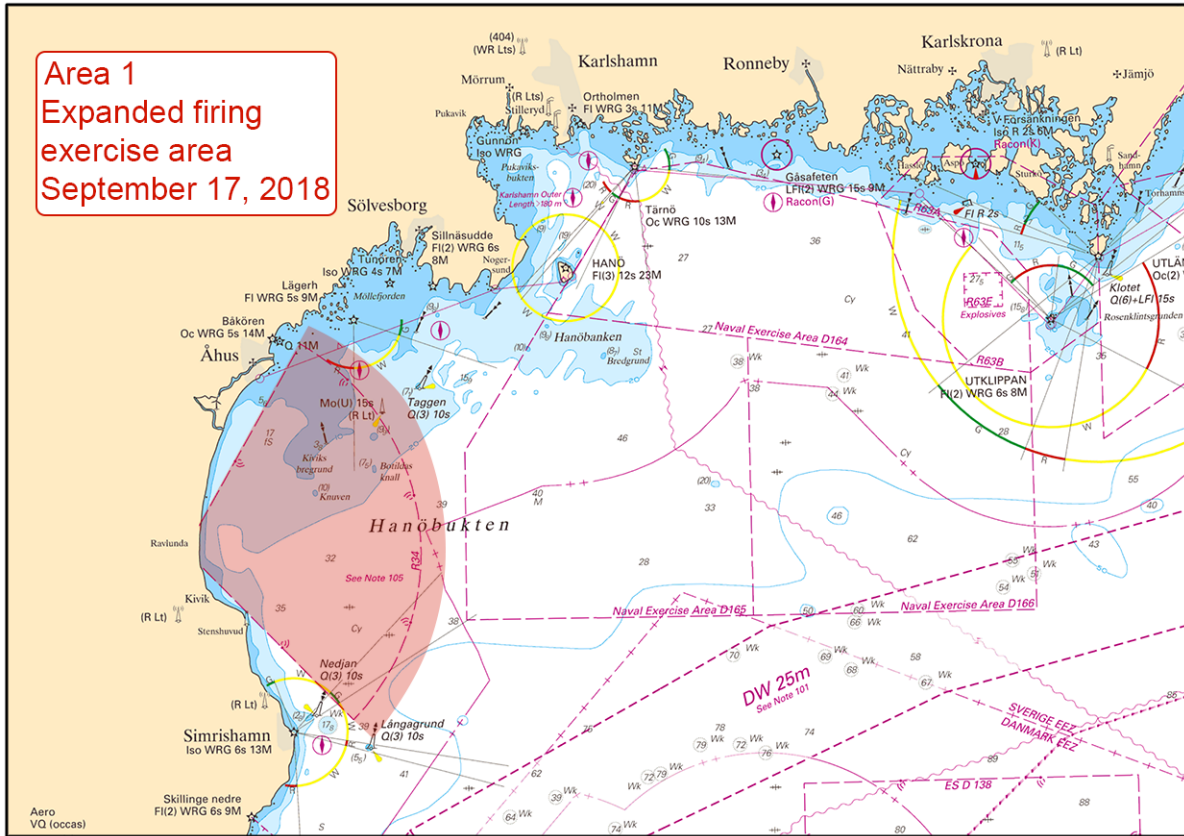
During practice orange quick light, Q Or, is showm from shore.

For further information: call +46 44 35 10 32 or contact Ravlunda firing range on VHF channel 16.

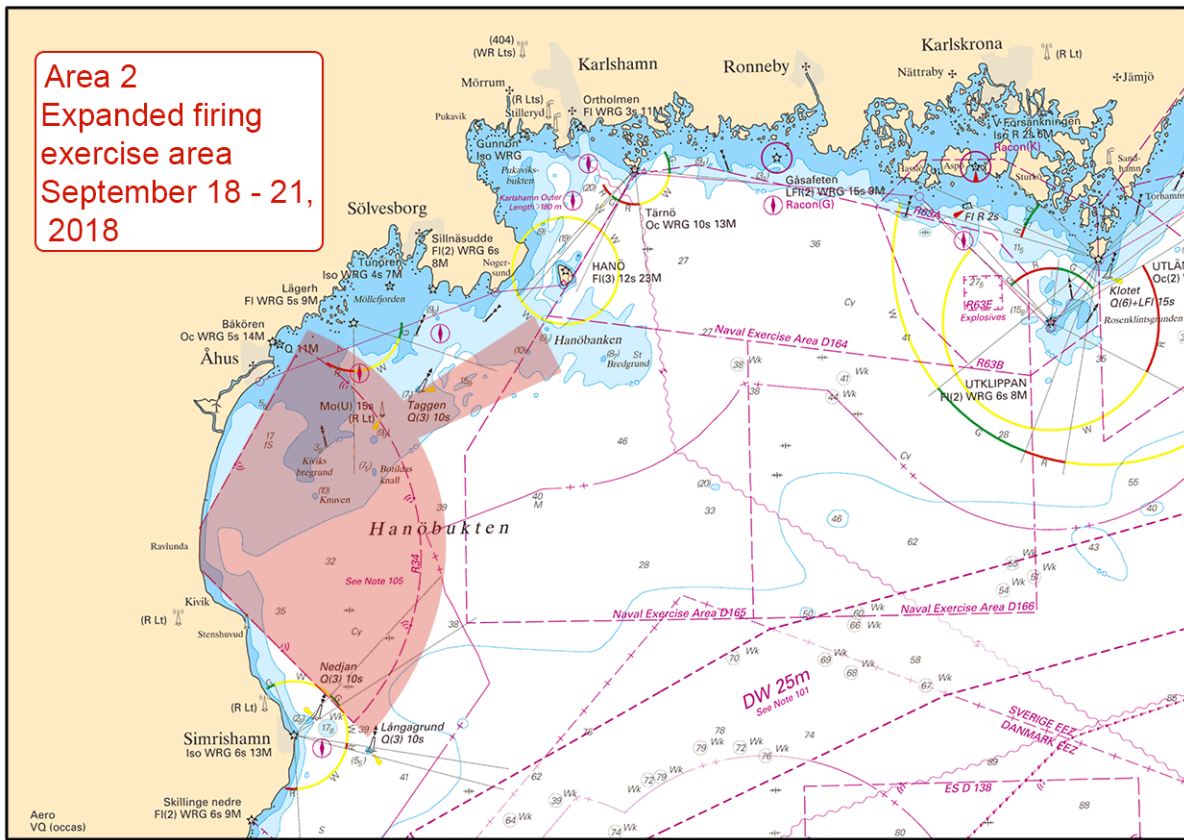
Date	Time	Area
September 17	0800 - 1700 LT	Area 1
September 18 - 21	0800 - 1700 LT	Area 2

Bsp Hanöbukten 2018/s22, s23, s24, s25, s26, s27, s28, s29, s30, s31, s32, s33, Bsp Sydkusten 2012/s29





Area 1



Area 2

## South-Western Baltic

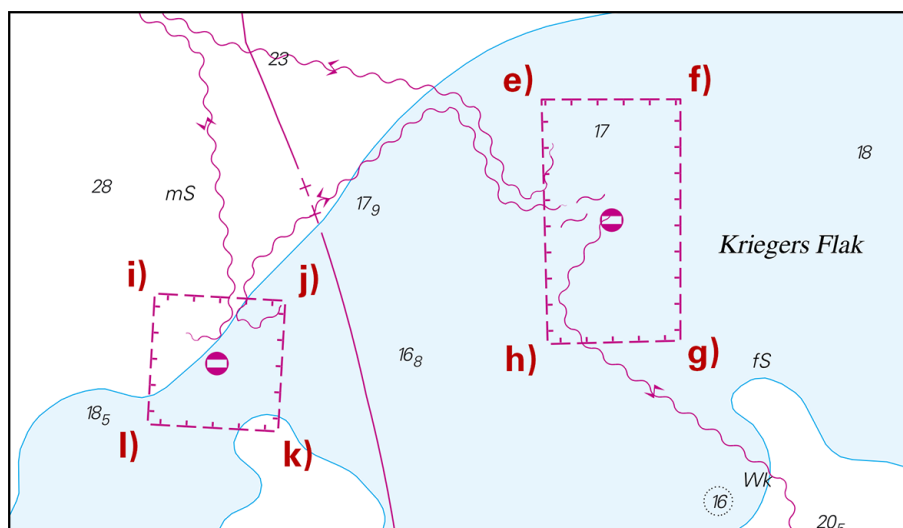
13349

Chart: 74

## Denmark. South-Western Baltic. Kriegers Flak. Restricted area and buoyage.

Expired notices: 2018:696/12965

<b>Delete</b>	area with prohibited entry and special marks a) - d)	a)	55-03,649N	012-55,930E
		b)	55-03,517N	012-57,749E
		c)	55-02,312N	012-57,209E
		d)	55-02,307N	012-55,465E
<b>Insert</b>	area with prohibited entry e) - h) and i) - l) as shown	e)	55-03,797N	012-55,713E
		f)	55-03,799N	012-57,705E
		g)	55-01,813N	012-57,705E
		h)	55-01,786N	012-55,800E
		i)	55-02,139N	012-50,178E
		j)	55-02,147N	012-51,917E
		k)	55-01,090N	012-51,852E
		l)	55-01,081N	012-50,101E



Areas with prohibited entry

Dk NtM 2018:23/464. Publ. 29 augusti 2018

## The Sound

\* 13373

Chart: 8141, 921, 9211

## Sweden. The Sound. Port of Malmö. Shoalings has been dredged.

Expired notices: 2018:712/13255(T)

The depth is now restored after dredging operation at the three areas in the harbour basin where the depth was less than 10.0 metres.

Port of Malmö			
depth restored in pos. a) - c)	a)	55-37,34N	012-59,10E
	b)	55-37,32N	012-59,16E
	c)	55-37,29N	012-59,21E

Bsp Sydkusten 2012/s38, s44, s46

Copenhagen Malmö Port AB. Publ. 30 augusti 2018

**Kattegat****\* 13376 (T)****Chart: 92, 923, 924****Sweden. Kattegat. W of Halmstad. Ringenäs. Firing exercise. September 5 - 6.**

Position: Approx.	56-40,8N	012-38,6E	Firing restriction area R41 A RINGENÄS
-------------------	----------	-----------	--

Firing will take place at Ringenäs firing range during stated times. The dangerous area extending from shore according to table below. A light on shore, VQ R, will be shown during firing.

Part of restriction area R41A will be closed for vessels during stated times. During practice, light VQ R is shown from shore.

For further information call +46 35 266 39 55, +46 35 536 77.

Date	Time	Range
September 5 - 6	0900 - 1600 LT	3,8 M

Not shown in ENC.

Bsp Västskusten S 2016/s29, s30

*Försvarmakten, Lv6. Publ. 30 augusti 2018*

**Lake Vänern and Trollhätte kanal****\* 13276****Chart: 1353****Sweden. Lake Vänern and Trollhätte kanal. Göta älv. Trollhättan. Stallbacka. Buoyage.**

<b>Amend</b>	port hand spar buoy to port hand light spar buoy FI 3s R	a)	58-18,877N	012-19,078E
<b>Amend</b>	port hand spar buoy to port hand light spar buoy FI 3s R	b)	58-18,846N	012-19,091E
<b>Amend</b>	port hand spar buoy to port hand light spar buoy FI 3s R	c)	58-18,819N	012-19,100E
<b>Amend</b>	port hand spar buoy to port hand light spar buoy FI 3s R	d)	58-18,795N	012-19,110E

Bsp Göta kanal 2011/s43

*Sjöfartsverket. Publ. 24 augusti 2018*