

Notices to Mariners, SWEDEN Swedish Maritime Administration



Areas in Swedish Notices to Mariners



SJÖFARTSVERKET

Editorial office
Swedish Maritime Administration
Ufs
601 78 NORRKÖPING
Sweden
tel: 0771 630 605
e-mail: ufs@sjofartsverket.se
Publisher:
Hydrographer Patrik Wiberg

ANNOUNCEMENTS

No Announcements in this booklet.

NOTICES

Sea of Bothnia

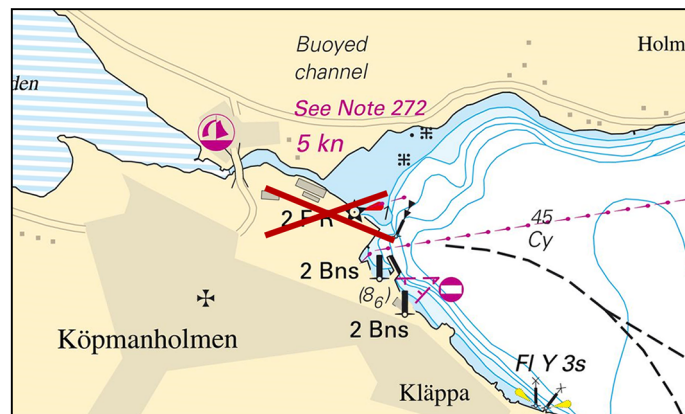
* 13235

Chart: 522

Sweden. Sea of Bothnia. S of Örnsköldsvik. Köpmanholman. Leading lights withdrawn.

Delete	leading light and text '2 F R'	63-10,535N	018-35,056E
---------------	--------------------------------	------------	-------------

Bsp Bottenhavet N 2013/s21



Leading lights withdrawn

Sjöfartsverket, Norrköping. Publ. 1 augusti 2018

* 13253

Chart: 523

Sweden. Sea of Bothnia. Kramfors. Lugnvik. Spar buoy.

Replace	starboard hand spar buoy with south cardinal spar buoy with top mark	62-55,509N	017-54,919E
----------------	--	------------	-------------

Bsp Bottenhavet N 2013/s52

Sjöfartsverket. Publ. 1 augusti 2018

Sea of Åland and Archipelago Sea

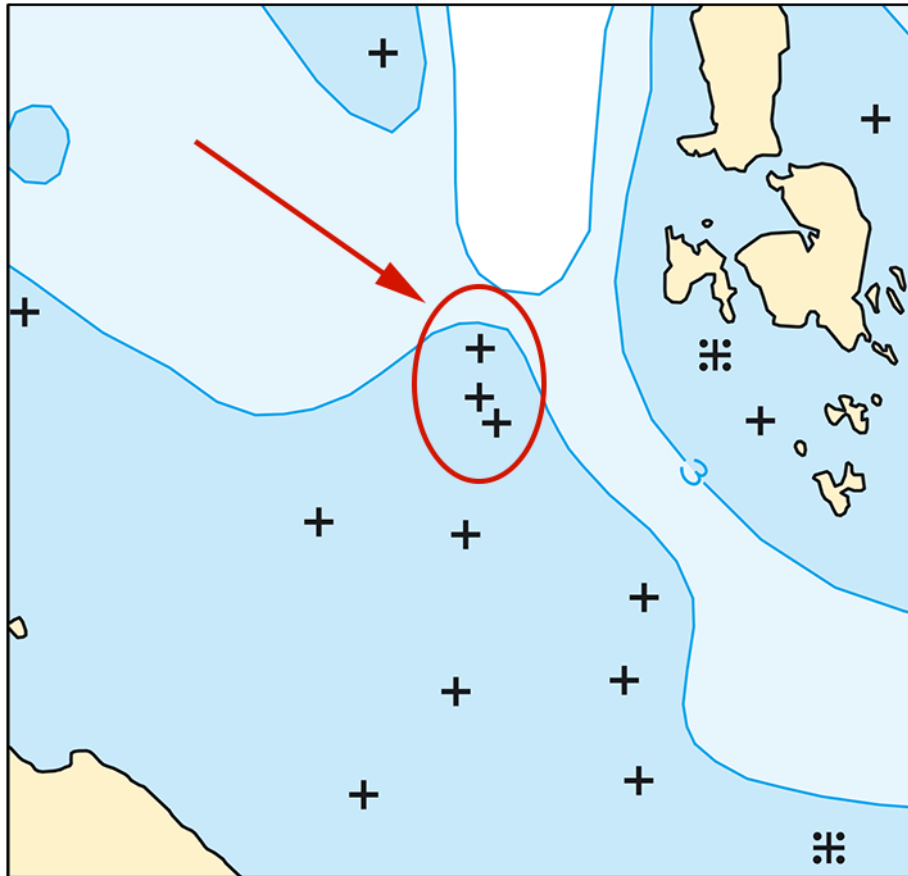
* 13217

Chart: 535

Sweden. Sea of Åland and Archipelago Sea. Öregrundsgrepen. SW of Bredbådan. Underwater rock.

Insert	underwater rock	a)	60-27,983N	018-08,101E
Insert	underwater rock	b)	60-27,960N	018-08,100E
Insert	underwater rock	c)	60-27,946N	018-08,117E
Amend	3 metre depth contour	d)	60-27,996N	018-08,074E

Bsp Bottenhavet S 2013/s32, s34, Bsp Stockholm N 2018/s10



SW of Bredbådan

Sjöfartsverket, Norrköping. Publ. 2 augusti 2018

Northern Baltic

* 13037 (T)

Chart: 616, 6163

Sweden. Northern Baltic. Stockholm archipelago. Dalarö Canal. Dalarö Triathlon, August 25.

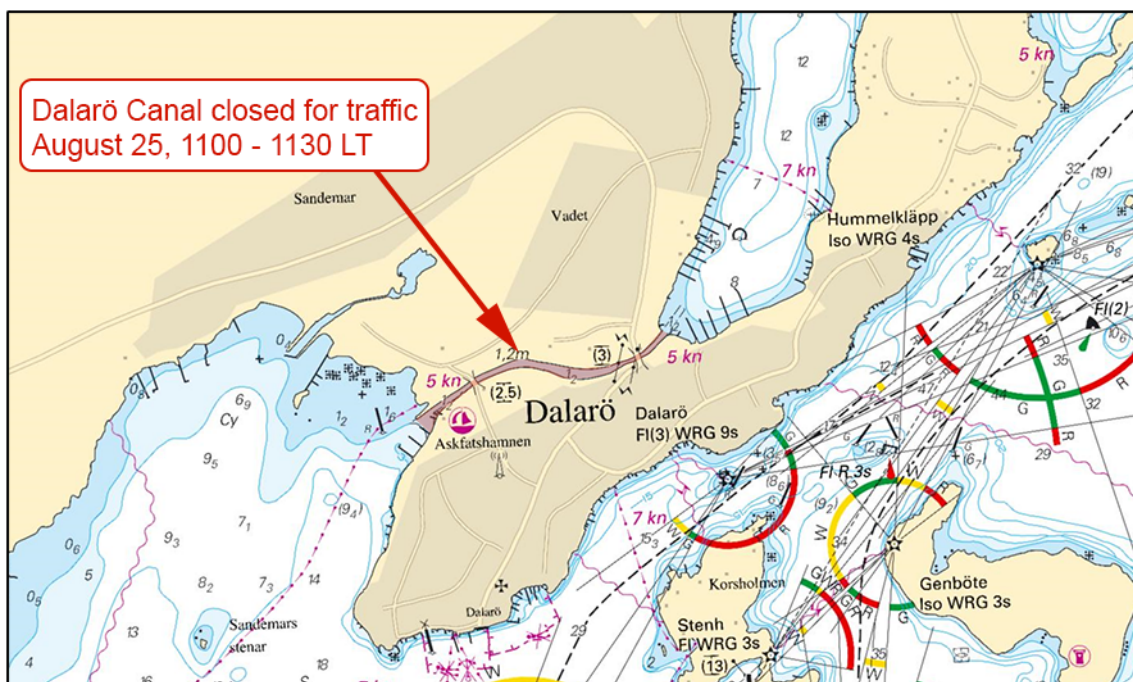
Time: August 25, 1100 - 1130 LT

Dalarö Canal will be closed for traffic during stated time due to a Triathlon race.

Dalarö Canal	59-08,258N	018-24,476E
--------------	------------	-------------

Not shown in ENC.

Bsp Stockholm M 2018/s42, s44, Bsp Stockholm S 2018/s06, s09



Dalarö Canal

Länsstyrelsen, Stockholm. Publ. 1 augusti 2018

* 13116

Chart: 6181

Sweden. Northern Baltic. Kaggfjärden. Kagghamra. Kagghamra grustag. Buoyage.

Move	mooring buoy approximately 70 m NE to position	59-05,723N	017-47,017E
------	--	------------	-------------

Bsp Mälaren - Hjälmaran 2016/s32, s33

Sjöfartsverket, Norrköping. Publ. 1 augusti 2018

* 13121

Chart: 612

Sweden. Northern Baltic. Stockholm archipelago. Bergshamra. Skarpholmen. Underwater rock.

Insert	underwater rock	59-38,794N	018-42,814E
--------	-----------------	------------	-------------

Bsp Stockholm N 2018/s28

Sjöfartsverket, Norrköping. Publ. 1 augusti 2018

* 13249

Chart: 612, 613, 619

Sweden. Northern Baltic. Stockholm archipelago. Blidö. Svartlöga. Rödlöga. Söderöra. Hydrographic depth survey.

Amend	depth from 3.5 m to 3.1 m	a)	59-34,610N	018-51,790E
Insert	3 m depth contour with depth 2.9 m in	b)	59-34,752N	018-57,075E
Insert	depth 3.3 m and expand 6 m contour to circumscribe the same	c)	59-37,491N	018-59,923E
Insert	underwater rock and adjust depth contour to circumscribe the same	d)	59-34,881N	019-04,608E
Insert	6 m depth contour with depth 3.9 m in	e)	59-36,435N	019-00,825E
Insert	underwater rock with depth 2.1 m in	f)	59-36,116N	019-10,489E
Insert	underwater rock with depth 3.3 m in	g)	59-35,775N	019-10,471E

Bsp Stockholm N 2018/s28, s29, s30, s31

Sjöfartsverket, Norrköping. Publ. 31 juli 2018

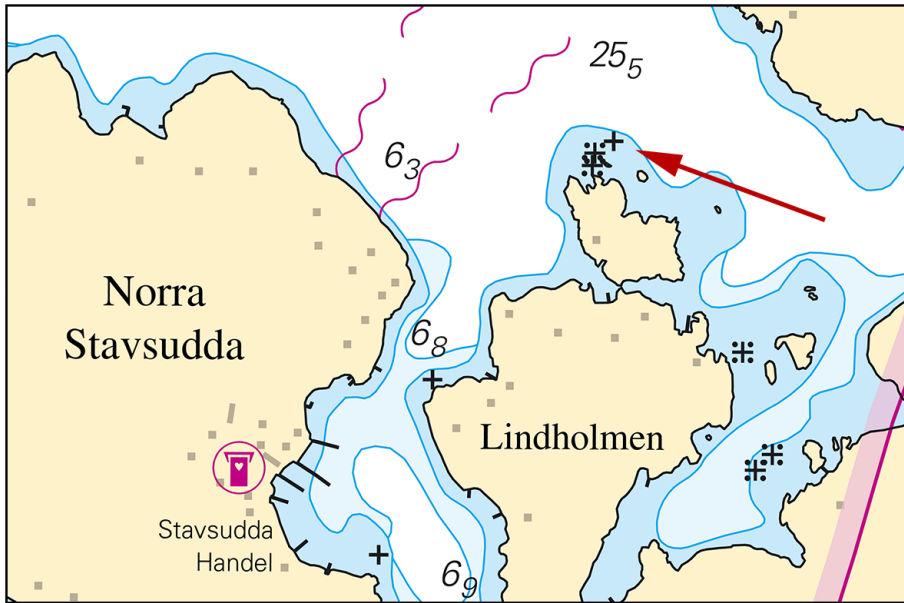
* 13261

Chart: 6143

Sweden. Northern Baltic. Stockholm archipelago. W of Möja. N Stavsudda. Shoal.

Insert	underwater rock	59-24,750N	018-47,167E
--------	-----------------	------------	-------------

Bsp Stockholm N 2018/s45



Underwater rock

Sjöfartsverket. Publ. 31 juli 2018

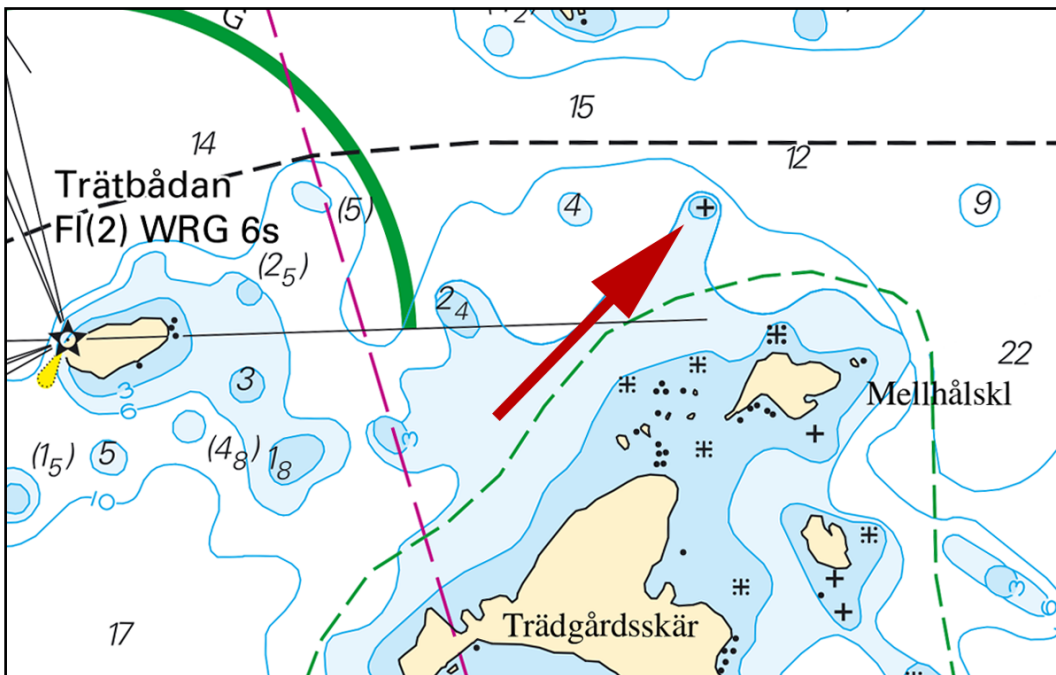
* 13270

Chart:

Sweden. Northern Baltic. S of Trosa. N of Trädgårdsskär. Shoal.

Delete	depth 3.3 m	a)	58-46,847N	017-34,704E
Insert	underwater rock and 3 metre depth contour as shown	b)	58-46,829N	017-34,763E

Bsp Mälaren - Hjälaren 2016/s43, Bsp Ostkusten 2015/s10, s29, Bsp Stockholm S 2018/s32, s40



Shoal

Sjöfartsverket. Publ. 1 augusti 2018

Lake Mälaren and Södertälje kanal

* 12997 (T)

Chart: 6141, 6142

Sweden. Lake Mälaren and Södertälje kanal. Riddarfjärden, northern part. Swimming competition. Riddarfjärdssimningen. Closed area.

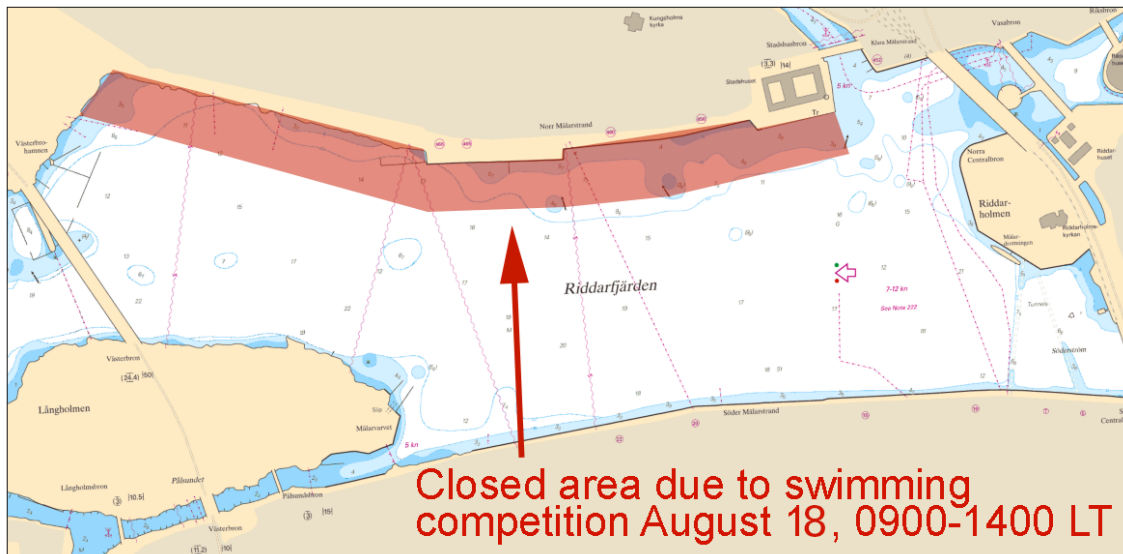
Time: August 18, 0900 - 1400 LT

Closed area for all vessels in the northern part of Riddarfjärden during the swimming competition "Riddarfjärdssimningen". See chartlet.

Riddarfjärden, northern part	59-19,55N	018-02,50E
------------------------------	-----------	------------

Not shown in ENC.

Bsp Mälaren - Hjälmaran 2016/s51, Bsp Stockholm M 2018/s10



Riddarfjärden

Länsstyrelsen, Stockholm. Publ. 1 augusti 2018

* 13238 (T)

Chart: 6141, 6142

Sweden. Lake Mälaren and Södertälje kanal. Stockholm. Northern part of Riddarfjärden. Triathlon. Closed area August 26.

Time: August 26

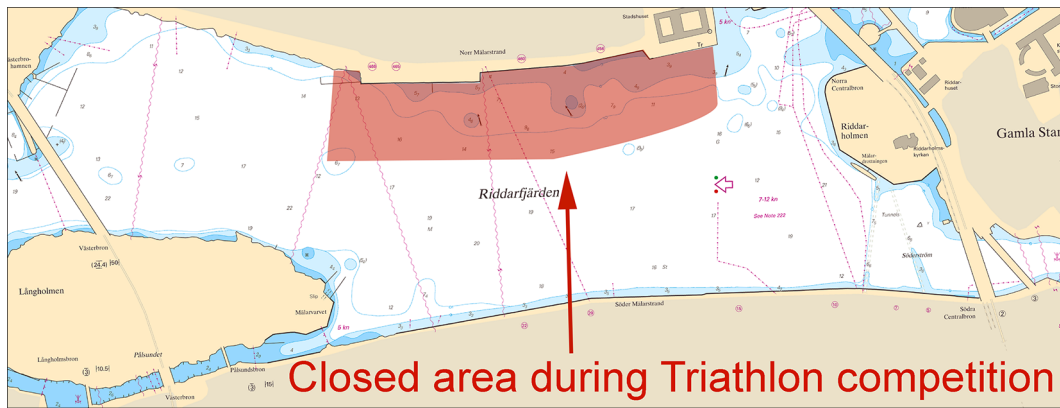
An area in the northern part of Riddarfjärden is closed for all vessels at the stated times due to a Triathlon competition, see chartlet.

August 26	0500 - 1430
-----------	-------------

Riddarfjärden	59-19,55N	018-03,00E
---------------	-----------	------------

Not shown in ENC.

Bsp Mälaren - Hjälmaran 2016/s51, Bsp Stockholm M 2018/s10



Länsstyrelsen, Stockholm. Publ. 2 augusti 2018

Central Baltic

* 13132

Chart: 7, 71

Sweden. Central Baltic, South-Eastern Baltic. Hoburgsbank. Depth.

Hydrographic survey shows less depth.

Insert	depth 12 m with 10 m depth contour in position	56-29,7N	018-20,5E
--------	--	----------	-----------

Sjöfartsverket. Publ. 1 augusti 2018

* 13214

Chart: 731

Sweden. Central Baltic. Gotland. Slite. Lanthamn. Depth.

Delete	2,2	57-42,369N	018-48,523E
Insert	1,7	57-42,378N	018-48,522E

Sjöfartsverket. Publ. 2 augusti 2018

* 13284 (T)

Chart: 623

Sweden. Central Baltic. Loftahammar. Competition "Loftahammar Endurance Day". Closed areas. August 4, 2018.

Time: August 4, 2018. 0830 - 1630 LT

Competition Loftahammar Endurance Day is located in an area west and southwest of Loftahammar.

The competition is held on land as well as in the water.

At four different locations the fairway is closed for all traffic at the following times:

Area 1: Fairway Bjursunds ström north	0830 - 0930 LT	57-55,85N	016-36,10E
Area 2: Fairway below bridge Bjursundsbron	0845 - 1000 LT	57-55,20N	016-35,40E
Area 3: Fairway Hultö - Björkö	0945 - 1130 LT	57-52,90N	016-38,05E
Area 4: Fairway Rågö - Kalvö	1200 - 1630 LT	57-52,05N	016-43,45E

The competition also take place in waters where there is no fairway, see attached picture, and extra caution is advised in those areas.

Not shown in ENC.

www.loftahammarenduranceday.com

Bsp Ostkusten 2015/s48, s49, s50, s51



Loftahammar Endurance Day

Länsstyrelsen Kalmar Län. Publ. 2 augusti 2018

* 13288 (T)

Chart: 622, 623

Sweden. Central Baltic. NE of Loftahammar. E of Stora Askö. Huvududden. Huvudskär. Area closed.

Time: Until further notice

Due to the oil spill following the grounding of Makassar Highway, the area between the positions below is closed for all traffic. The closed area is marked by a red floating barrier.

Mariners are advised to take the offshore route.

Coast Guard will be present during the entire operation.

Huvududden	57-59,65N	016-48,81E
Huvudskär	57-59,61N	016-49,03E

Not shown in ENC.

Bsp Ostkusten 2015/s44, s45, s50



Oil spill decontamination

Kustbevakningen. Publ. 1 augusti 2018

Kattegat

* 13219

Chart: 9312

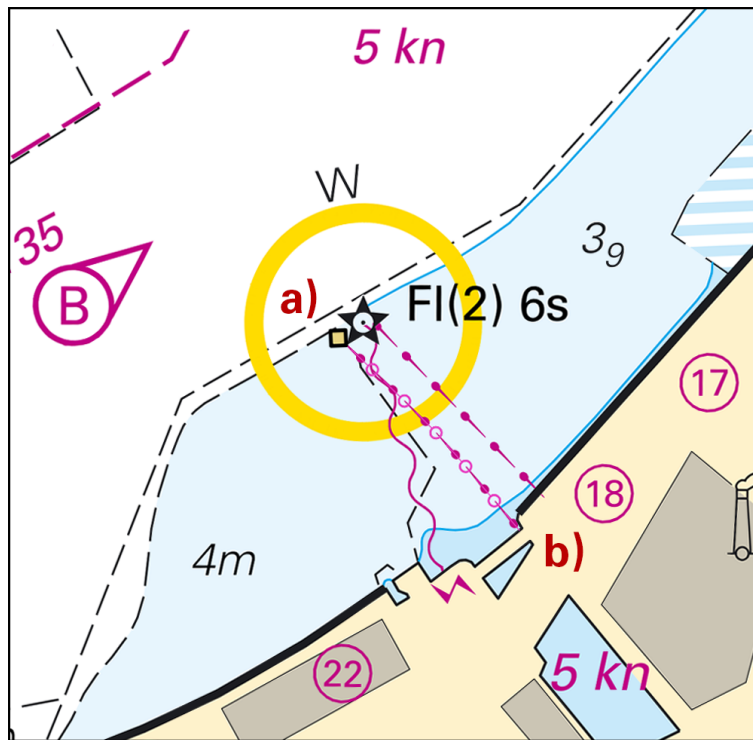
Sweden. Kattegat. Göteborg. Skeppsbrokajen. Pipeline extended. Dolphin moved.

Expired notices: 2018:694/12891(P)

A pipeline has been extended in the port of Gothenburg. A dolphin has been moved approximately 80 metres.

Move	dolphin approximately 80 m NW to position	a)	57-42,234N	011-57,108E
Insert	submarine pipeline between a) and b)	b)	57-42,184N	011-57,194E

Bsp Västkusten S 2016/s59



Dolphin and submarine pipeline

Göteborgs Dykeriteknik AB. Publ. 28 juli 2018

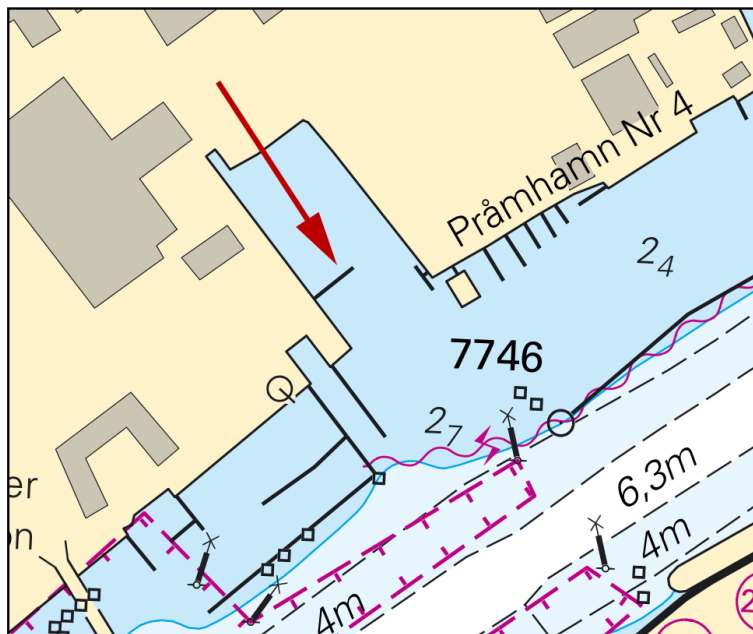
* 13231

Chart: 1352, 9312

Sweden. Kattegat. Göteborg. Bridge 'Götaälbron'. New jetty.

Insert	jetty	57-43,039N	011-58,136E
--------	-------	------------	-------------

Bsp Göta kanal 2011/s59, Bsp Västkusten S 2016/s59



Jetty for pleasure craft

Trafikkontoret, Göteborg. Publ. 31 juli 2018

Skagerrak

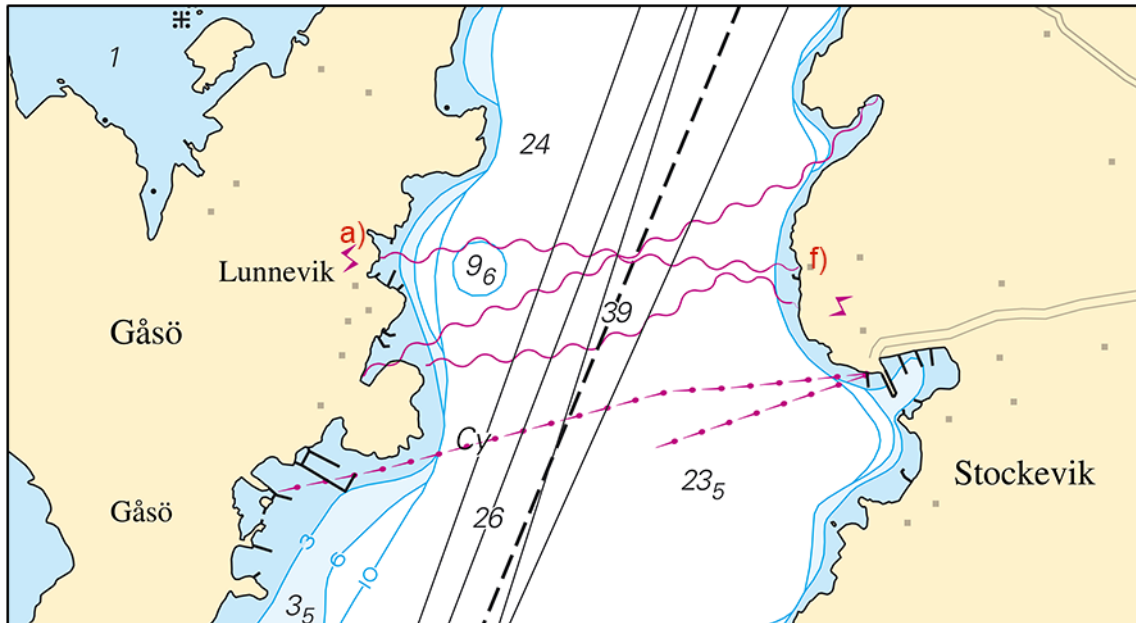
* 13201

Chart: 933, 9331

Sweden. Skagerrak. S of Lysekil. Gåsö. Stockevik. Submarine power cable.

Insert	submarine power cable between position a) - f)	a)	58-14,252N	011-24,804E
		b)	58-14,252N	011-24,913E
		c)	58-14,271N	011-24,982E
		d)	58-14,262N	011-25,096E
		e)	58-14,252N	011-25,242E
		f)	58-14,243N	011-25,590E

Bsp Västkusten N 2016/s19, s32



Power cable

Vattenfall. Publ. 2 augusti 2018

* 13283 (T)

Chart: 8, 93, 932

Sweden. Skagerrak. SW of Orust. Måseskär. Historic lighthouse temporarily lit. Ordinary light temporarily unlit.

Expired notices: 2018:711/12939(T)

Time: August 4 - 12, 2018.

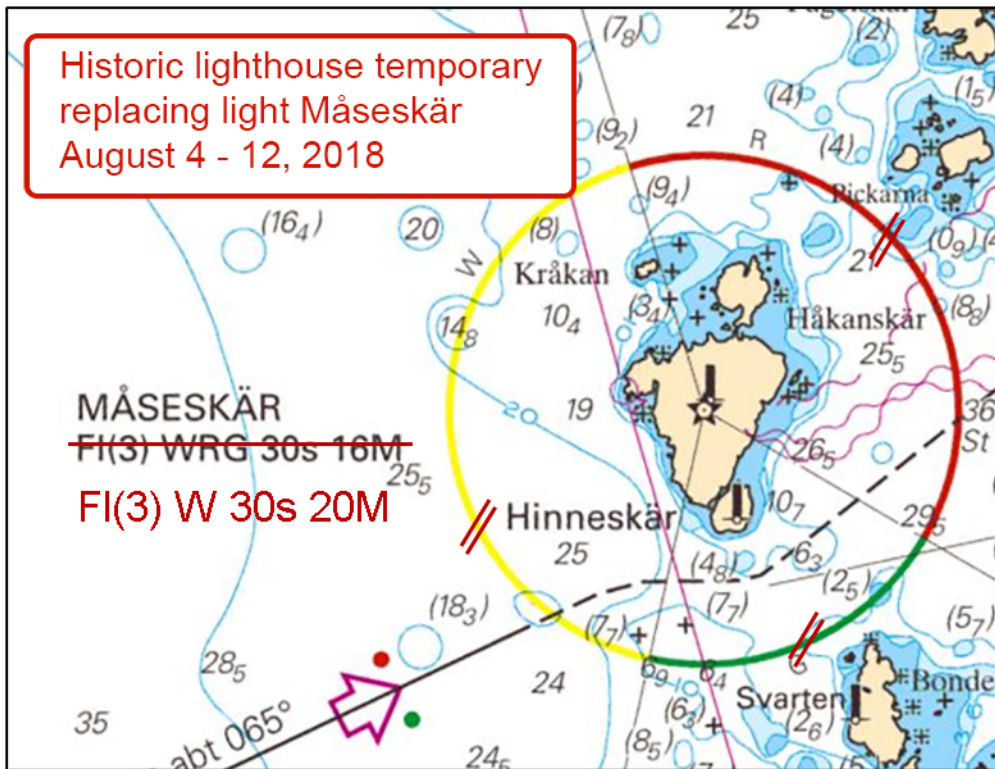
The historic lighthouse on island Måseskär is temporarily lit during the stated time.

At the same time, the ordinary light on Måseskär (FI(3) WRG 30s 16M) will be temporarily unlit.

Måseskär historic lighthouse FI(3) W 30s 20M	58-05,64N	011-19,83E
--	-----------	------------

Adm LoL: C0456

Bsp Västkusten N 2016/s22, Bsp Västkusten S 2016/s10



Måseskär

Stiftelsen Måseskär, Transportstyrelsen och Sjöfartsverket. Publ. 1 augusti 2018

Lake Vänern and Trollhätte kanal

* 13074

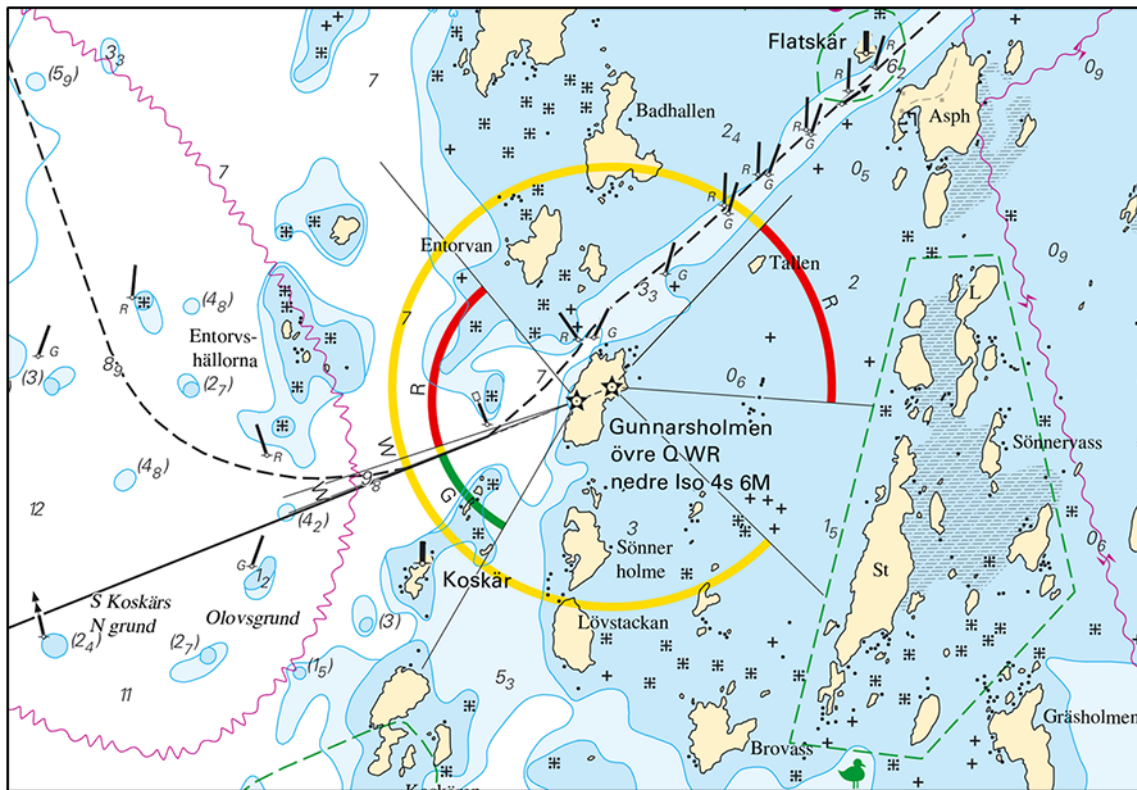
Chart: 13, 133, 1331

Sweden. Lake Vänern and Trollhätte kanal. Lake Vänern. Gunnarsholmen. Light 'Gunnarsholmen övre'.

Light 'Gunnarsholmen övre' has been lit.

Insert	light with character Q WR	58-50,99N	013-12,05E
	R 224,0 - 274,0		
	Dk 274,0 - 314,0		
	W 314,0 - 224,0		

Bsp Göta kanal 2011/s28, s36, s37, Bsp Vänern 2018/s04, s05, s06, s09, s26, s40, s41



Gunnarsholmen övre

Sjöfartsverket. Publ. 2 augusti 2018

* 13142

Chart: 1331

Sweden. Lake Vänern and Trollhätte kanal. N of Lidköping. Kållandsö. Hörviken. Spar buoy.

Insert	east cardinal spar buoy with top mark	58-41,087N	013-10,081E
--------	---------------------------------------	------------	-------------

Bsp Göta kanal 2011/s39, s41, Bsp Vänern 2018/s43, s45

Sjöfartsverket, Norrköping. Publ. 2 augusti 2018