

Notices to Mariners, SWEDEN Swedish Maritime Administration



Areas in Swedish Notices to Mariners



SJÖFARTSVERKET

Editorial office
Swedish Maritime Administration
Ufs
601 78 NORRKÖPING
Sweden
tel: 0771 630 605
e-mail: ufs@sjofartsverket.se
Publisher:
Hydrographer Patrik Wiberg

ANNOUNCEMENTS

No Announcements in this booklet.

NOTICES

The Quark

* 13256

Chart: 512

Sweden. The Quark. O of Holmsund. Yttre Täftefjärden. Rovågern. Lights extinguished.

Delete	leading light	63-44,176N	020-32,017E
Delete	leading light	63-44,089N	020-32,033E
Delete	2 F R (occas)	63-44,253N	020-32,438E

Adm. LoL. C5876

Adm. LoL. C5876-1

Bsp Bottenhavet N 2013/s36, s37, s42

Sjöfartsverket. Publ. 20 juli 2018

Sea of Bothnia

* 13268 (T)

Chart: 534, 5342

Sweden. Sea of Bothnia. Gävle. Sailing competition. August 6 - 10, 2018.

Time: August 6 - 10, 2018

August 6: Training session 1300 till latest 1800 LT

August 7 - 10: 0800 till latest 1800 LT. Three regattas will be held each day.

Sailing regattas will be held inside one of the marked-out areas on the chartlet. Area 'A' is prioritized.

Additional information is given via the Sailing Coordinator på +46 (0) 76-3031549 or by the Safety Manager on +46 (0) 70-3184611.

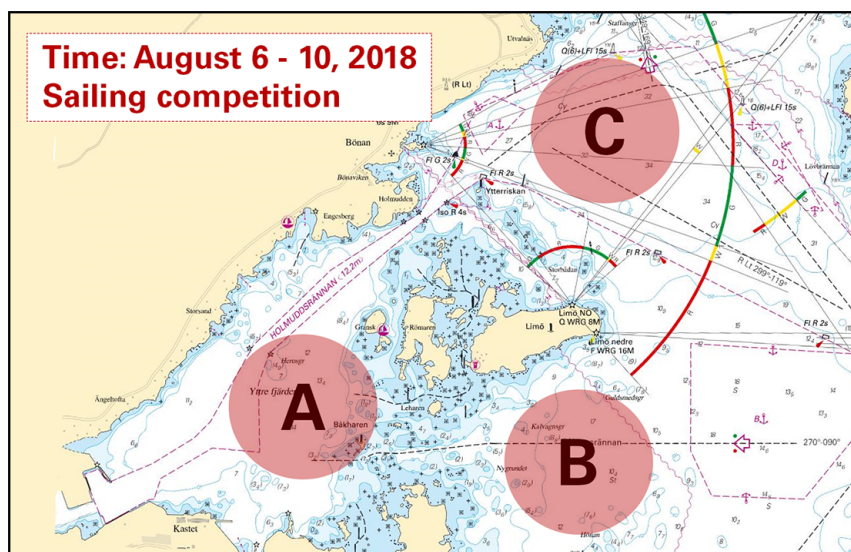
Mariners are advised to pass exercising caution and to maintain a sharp lookout when in the vicinity.

Centre of area 'A'	a)	60-42,38N	017-17,20E
Centre of area 'B'	b)	60-41,92N	017-21,24E
Centre of area 'C'	c)	60-44,66N	017-22,00E

www.gss.se

www.wc24mr.com

Bsp Bottenhavet S 2013/s28, s29, s36, s37, s38



Sailing competition 'World Championship 2.4mR Class'

Gefle Segel Sällskap. Publ. 26 juli 2018

Northern Baltic

* 13199

Chart: 611, 612

Sweden. Northern Baltic. Stockholm archipelago. Rådmansö. Sundholmen. Underwater rock.

Insert	underwater rock with 3m depth contour	59-42,443N	018-54,443E
--------	---------------------------------------	------------	-------------

Bsp Stockholm N 2018/s23

Sjöfartsverket. Publ. 20 juli 2018

Lake Mälaren and Södertälje kanal

* 12669 (T)

Chart: 6141, 6142

Sweden. Lake Mälaren and Södertälje kanal. Lake Mälaren. Riddarfjärden. Sailing race 'Riddarfjärdsregattan'. September 1 - 2, 2018.

Schedule:

September 1 - Racing starts at 1055 LT. Two races are held with the competition time limited to 120 mins each.

September 2 - Racing starts at 1055 LT. Two separate races are held with the competition time limited to 165 mins each.

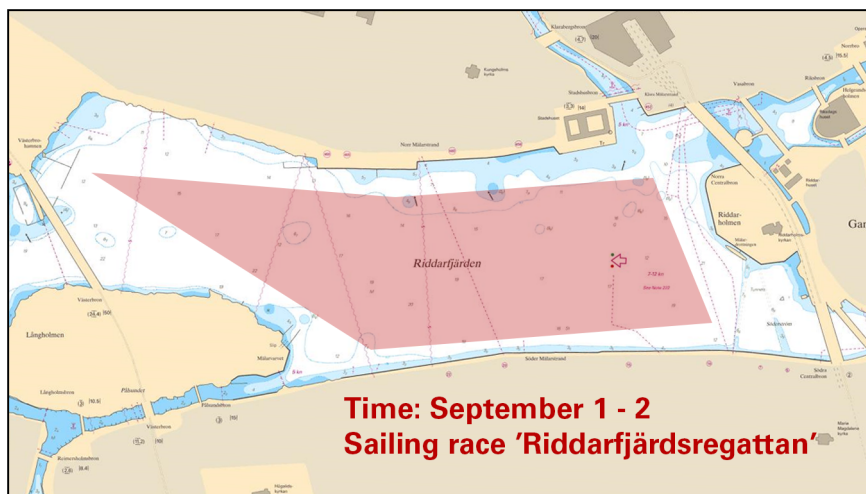
Sailing races are held during the stated times as per above in the marked-out area shown in the chartlet.

Riddarfjärden	59-19,436N	018-02,870E
---------------	------------	-------------

www.gys.se

Not shown in ENC.

Bsp Mälaren - Hjälmaran 2016/s51, s52, Bsp Stockholm M 2018/s06, s10



Sailing race 'Riddarfjärdsregattan'

Gaff Yacht Society. Publ. 24 juli 2018

* 13272 (T)

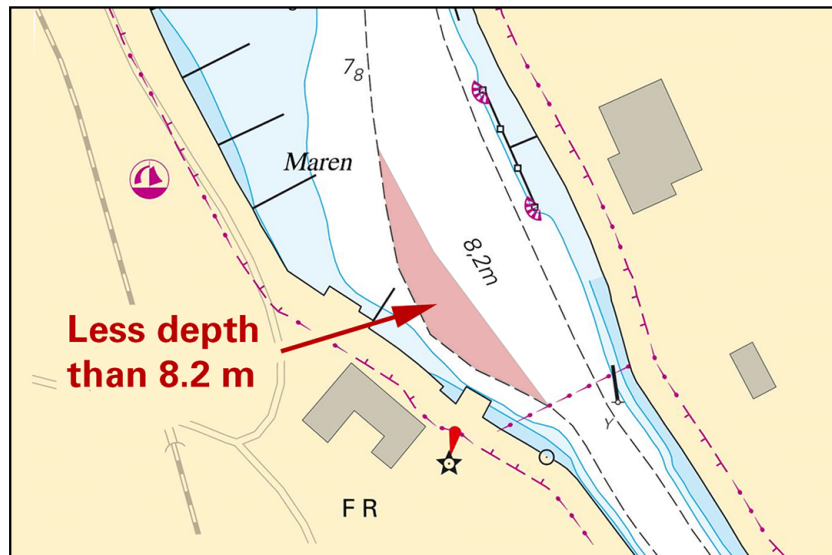
Chart: 6181

Sweden. Lake Mälaren and Södertälje kanal. Södertälje Canal. Maren. Igelstaviken. Fairway area. Less depth.

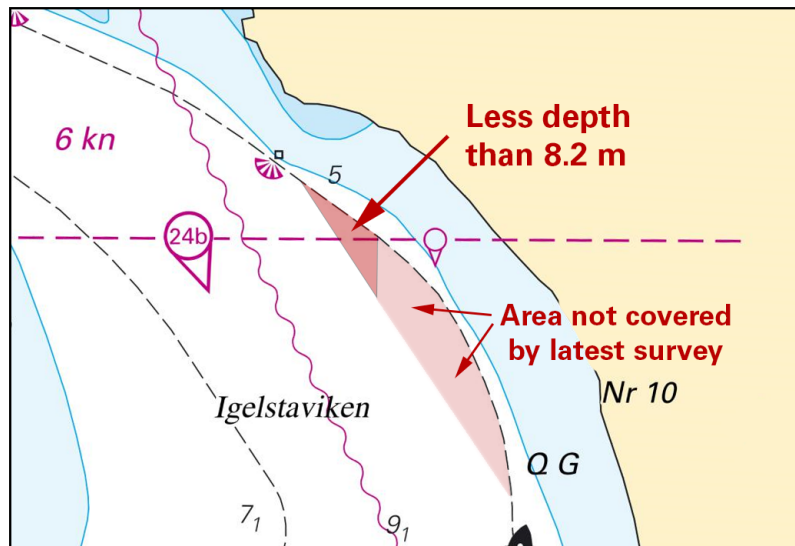
Less depth than what is currently charted has been found to exist at the edge of the dredged fairway area. Refer to chartlets.

depths in dredged fairway area less than 8.2 m	a)	59-11,34N	017-38,00E	Maren
	b)	59-10,91N	017-39,48E	Igelstaviken

Bsp Mälaren - Hjälmaran 2016/s30, s31



Maren



Igelstaviken, S of Södertälje

Sjöfartsverket. Publ. 25 juli 2018

Central Baltic

* 13273 (T)

Chart: 71

Sweden. Central Baltic. E of Öland. Kårehamn Wind farm. Navigation lights not working.

Time: Until further notice.

The light on two of the wind turbines in Kårehamn wind farm is temporarily unlit.

Wind turbine 8	a)	56-59,117N	017-00,686E
Wind turbine 12	b)	56-58,552N	017-01,666E

Bsp Kalmarsund 2014/s04, s05

Southern Baltic

* 12554

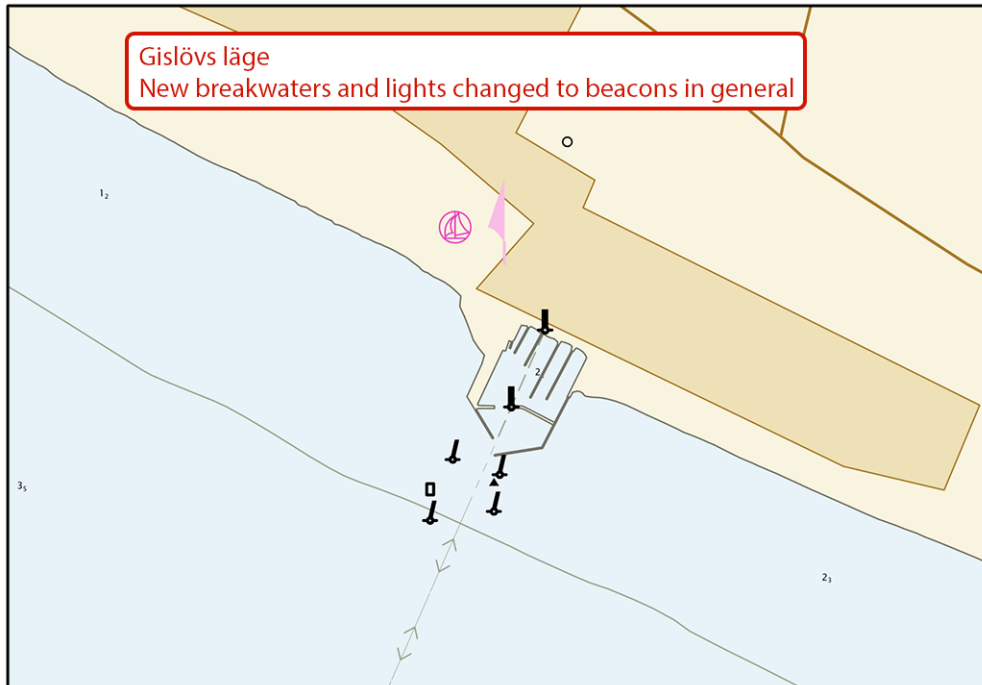
Chart: 839

Sweden. Southern Baltic. Gislövs läge. Amendments to breakwaters and lights.

New breakwaters by Gislövs läge, see chartlet for reference. Attached chartlet is from ENC due to scale of the paper chart.

Delete	light	55-21,375N	013-13,803E
Insert	beacon in general	55-21,375N	013-13,803E
Delete	light	55-21,276N	013-13,732E
Insert	beacon in general	55-21,276N	013-13,732E

Bsp Sydkusten 2012/s26



Gislövs läge

Trelleborgs kommun. Publ. 26 juli 2018

Kattegat

* 13260 (T)

Chart: 932, 9321

Sweden. Kattegat. Tjörn island. Skärhamn. Triathlon Contest. August 25, 2018.

Time: August 25, 0900 - 1030 LT

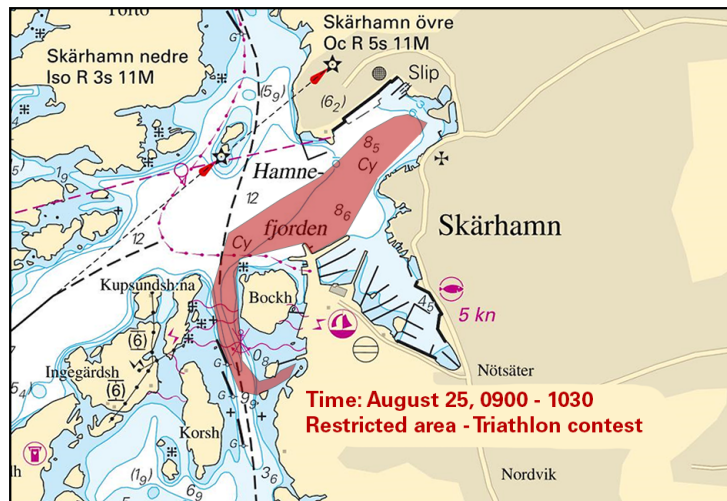
The marked-out area in the chartlet is closed for all unauthorized traffic during the stated time.

The area is delineated by markers and patrolled by guard vessels which monitor VHF Ch 16.

Skärhamn	57-59,49N	011-32,39E
----------	-----------	------------

Not shown in ENC.

Bsp Västkusten S 2016/s14, s36, s37



Triathlon contest

Active Island Tjörn. Publ. 26 juli 2018

* 13274 (T)

Chart: 924

Sweden. Kattegat. Falkenberg. Leading lights moved.

Expired notices: 2018:711/13248(P)

Time: July 26 - August 26, 2018

The leading lights in Falkenberg will be moved to new positions. They will be unlit and the leading line will be unreliable during some time before the new positions have been properly established.

July 26 - August 1, works done on the upper leading lights.

August 20 -26, works done on the lower leading lights.

Upper leading light, west	56-53,583N	012-28,728E
Upper leading light, east	56-53,570N	012-28,771E
Lower leading light, west	56-53,399N	012-28,515E
Lower leadin light, east	56-53,371N	012-28,541E

Not shown in ENC.

Bsp Västkusten S 2016/s27, s66

Falkenbergs Terminal. Publ. 26 juli 2018

Skagerrak

* 13156 (T)

Chart: 933, 9331

Sweden. Skagerrak. Lysekil. Lysekil Women's Match. Sailing race.

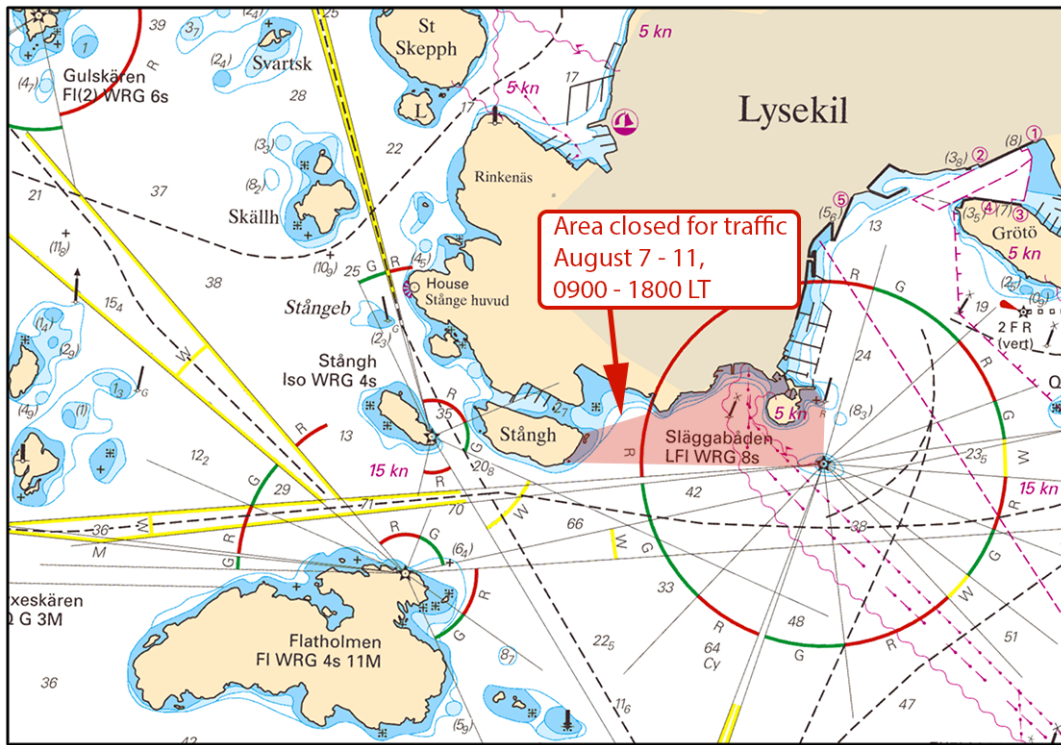
Time: August 9 - 11, 2018, daily between 09.00 and 18.00 LT.

During the sailing race 'Lysekil Women's Match' the area marked in the chartlet is closed for traffic during the stated times.

Competition area	58-16,00N	011-25,85E
------------------	-----------	------------

Not shown in ENC.

Bsp Västkusten N 2016/s19, s32, s39



Lysekil Women's Match

Länsstyrelsen Västra Götalands län. Publ. 25 juli 2018