

Notices to Mariners, SWEDEN Swedish Maritime Administration



Areas in Swedish Notices to Mariners



SJÖFARTSVERKET

Editorial office
Swedish Maritime Administration
Ufs
601 78 NORRKÖPING
Sweden
tel: 0771 630 605
e-mail: ufs@sjofartsverket.se
Publisher:
Hydrographer Patrik Wiberg

Affected charts and Notices

Underrättelser för sjöfarande (Ufs) is an official Swedish publication which provides information pertaining to shipping in the Baltic Sea Area and Kattegat, as well as Skagerrak east of a line drawn between Hanstholm and Lindesnes.

The information on foreign waters is largely confined to significant occurrences which may affect Swedish charts. Ufs is thus wholly unsuited for the purpose of keeping BA-charts and/or other national charts updated.

An asterisk (*) in front of the number denotes that the notice is based on information obtained from Swedish source material and that the details contained therein affect Swedish waters.

When the letter (**P**) is adjacent to the notice number it serves as an indication that the notice is of a preliminary nature. Such notices will later be replaced by corresponding ones containing definitive information.

Similarly, when the letter (**T**) is placed adjacent to the notice number it denotes that the notice is of a temporary nature. In case no period of validity is given, this type of notice will be rendered invalid either when a new Temporary Notice is promulgated or if pertaining conditions cease to exist.

Bearings are true and given clockwise from 000° to 360° and, when given in conjunction with lights, indicate a direction from seaward.

Featured chartlets are primarily intended to simplify chart correction work and are not always true to scale. In general, they show the largest charted scale available for respective area.

Responsibility for the factual content published in Ufs rests with the informant.

Chart corrections and other information attributed to a specific geographical area can be found under NOTICES. Other information is found under ANNOUNCEMENTS, starting on pg. 3.

The periodical Ufs is normally published every Thursday and can be downloaded as a PDF-file from the homepage of the Swedish Maritime Administration. Note that as the file is automatically generated from a database unintentional page breaks may occur at random.

Further information on the use of Ufs can be found in the annual publication *Ufs A*.

Reporting dangers and errors

All observations concerning floating aids to navigation, unlit beacons and lights, objects adrift or any other occurrence which may have a detrimental impact on safety at sea are to be forwarded to MSI Sweden at the earliest possible opportunity.

Call: MSI Sweden

VHF Channel: Appropriate working channel

Phone: +46 771 630 685 (24/7)

E-mail: msi@sjofartsverket.se

Affected charts	Notice no	Sign	Affected charts	Notice no	Sign
7	13180 (T)		9211	13255 (T)	
8	13180 (T)				
61	13186 (T)				
74	13091 (T)				
74	13180 (T)				
74	13262 (T)				
83	13091 (T)				
83	13180 (T)				
83	13262 (T)				
92	13236 (T)				
113	13047				
135	13213				
536	13181				
536	13186 (T)				
612	12810				
616	13208 (T)				
619	13186 (T)				
731	13166				
731	13190				
741	13091 (T)				
742	13091 (T)				
742	13180 (T)				
743	13180 (T)				
839	13262 (T)				
921	12972 (P)				
921	13194 (T)				
921	13255 (T)				
923	13236 (T)				
924	13236 (T)				
1353	13213				
6141	13133				
6142	12756				
6162	13208 (T)				
6163	13208 (T)				
7413	13091 (T)				
8141	13194 (T)				
8141	13255 (T)				
9211	13194 (T)				

ANNOUNCEMENTS

No Announcements in this booklet.

NOTICES

Sea of Åland and Archipelago Sea

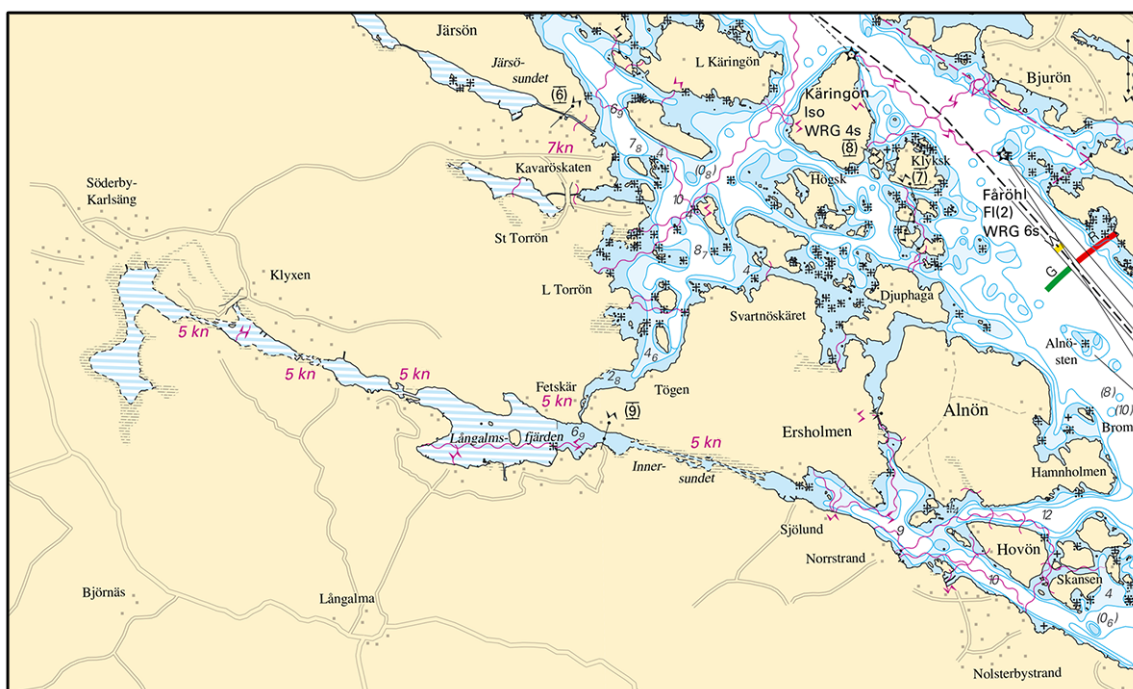
* 13181

Chart: 536

Sweden. Sea of Åland and Archipelago Sea. E of Östhammar. Långalmsfjärden. Speed limit 5 kn.

Insert	speed limit 5 kn	a)	60-17,106N	018-26,678E
Insert	speed limit 5 kn	b)	60-16,970N	018-27,523E
Insert	speed limit 5 kn	c)	60-16,935N	018-28,431E
Insert	speed limit 5 kn	d)	60-16,791N	018-29,682E
Insert	speed limit 5 kn	e)	60-16,631N	018-30,838E

Bsp Stockholm N 2018/s15



Långalmsfjärden

Länsstyrelsen Uppsala län. Publ. 18 juli 2018

* 13186 (T)

Chart: 536, 61, 619

Sweden. Sea of Åland and Archipelago Sea. Strait of Södra Kvarken. DW-route. Lights 'Understen' to 'Märket'. Canoe race 'Nordic Islands Adventure Race'.

Time August 13, 1200 - 2400 LT.

Some 50 canoes will cross the waters between lights 'Understen' and 'Märket' in connection with the contest 'Nordic Islands Adventure Race'. Refer to chartlet.

All canoeists will be wearing red fluorescent caps, reflective bands and white flashing lights.

Safety boats patrol the area and may be contacted by VHF Ch 16 or telephone: +46 708 529 989.

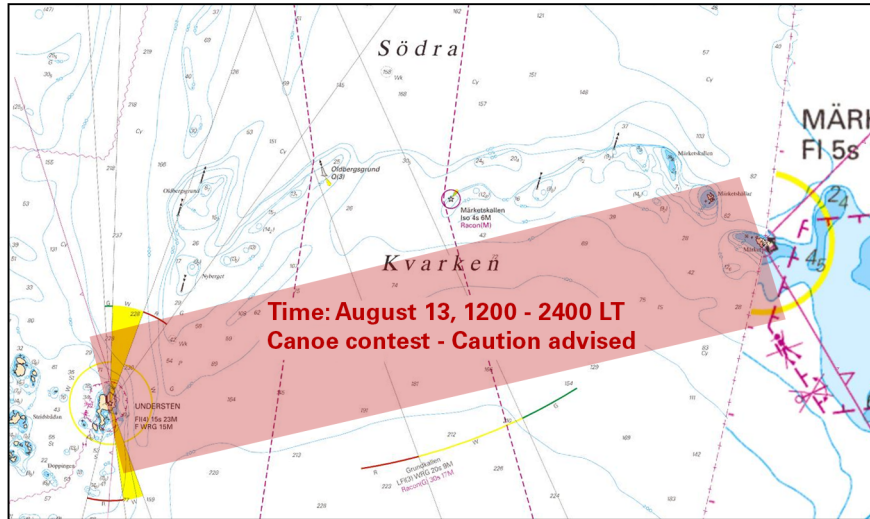
Call sign: 'Nordicislandsar'

Mariners are advised to navigate with caution when passing through the area and to maintain a sharp lookout at all times.

For further information, please visit <http://nordicislandsar.com/>

Light 'Understen'	60-16,510N	018-55,193E
Light 'Märket'	60-18,057N	019-07,880E

Bsp Stockholm N 2018/s06, s18, s19



Canoe contest - Strait of Södra Kvarnen

Nordic Island AB. Publ. 19 juli 2018

Northern Baltic

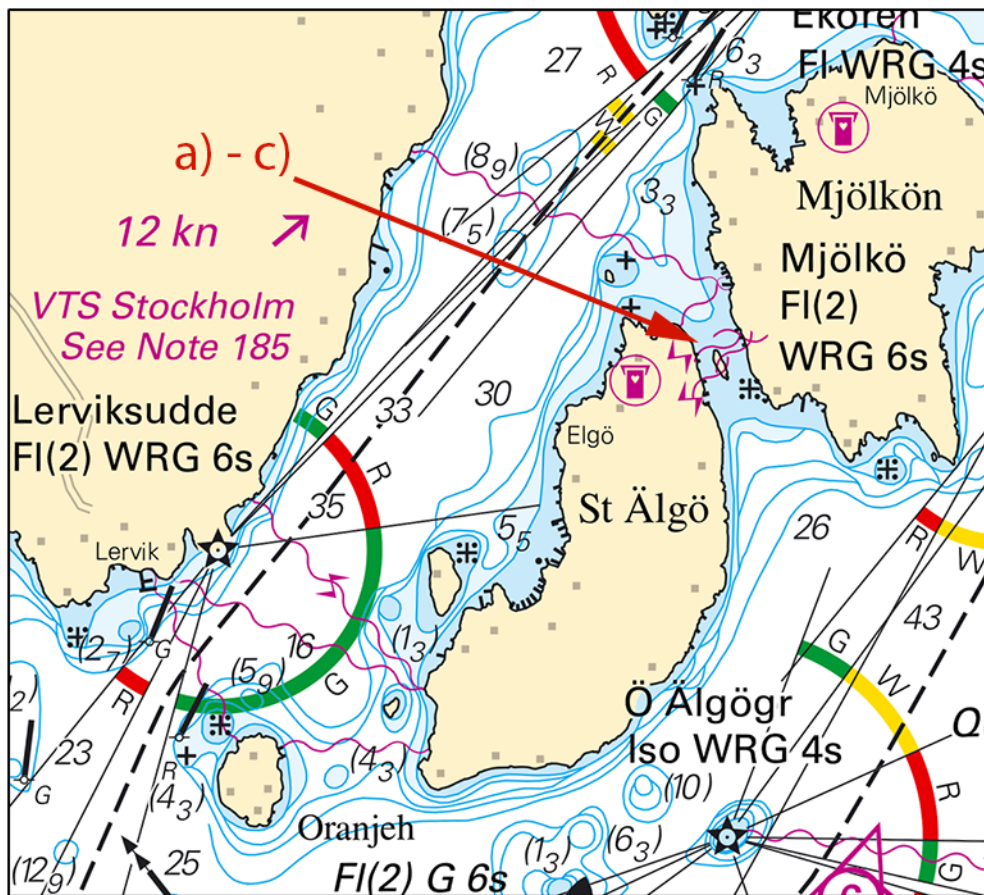
* 12810

Chart: 612

Sweden. Northern Baltic. Stockholm archipelago. Stora Älgö. Mjölkönsfjärden. New submarine cable.

Insert	submarine power cable between position a) - c)	a)	59-27,473N	018-24,711E
		b)	59-27,505N	018-24,767E
		c)	59-27,508N	018-24,844E

Bsp Stockholm N 2018/s38



Stora Älgö

Infratek Sverige AB. Publ. 18 juli 2018

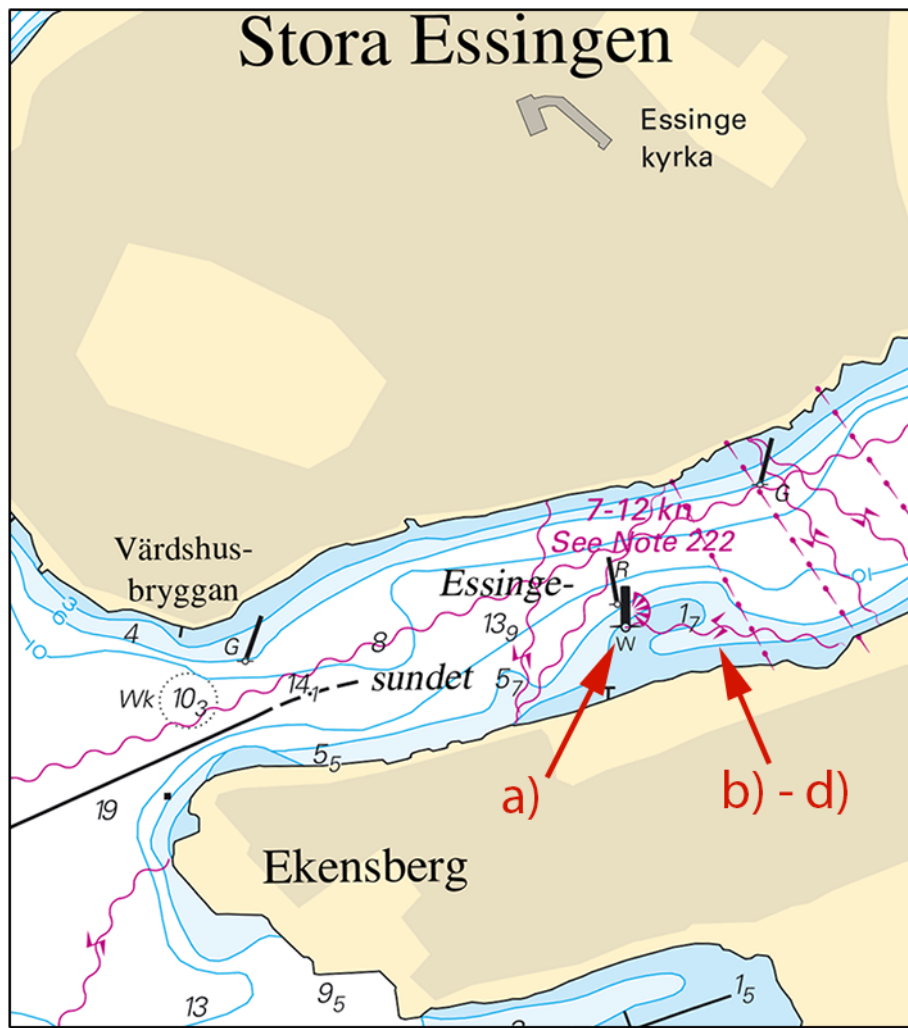
* 13133

Chart: 6141

Sweden. Northern Baltic. Stockholm. Essingsundet. Beacon tower. New submarine cable.

Move	beacon approx. 20 m N to	a)	59-18,997N	017-59,493E
Insert	submarine power cable between position b) - d)	b)	59-18,997N	017-59,493E
		c)	59-18,987N	017-59,706E
		d)	59-18,994N	017-59,619E

Bsp Mälaren - Hjälmarén 2016/s50



Essingesundet

Stockholms hamnar. Publ. 19 juli 2018

* 13208 (T)

Chart: 616, 6162, 6163

Sweden. Northern Baltic. E of Utö. Gunnery exercises. August 2018.

Gunnery exercises will be carried out within Utö firing range during stated times. The current extension of the closed area is given in the table.

Signal ammunition is used during hours of darkness.

Information during practice times VHF channel 16, call Utö skjutfält, or phone +46 8 501 570 45. Information about upcoming practice times, phone: +46 10 823 18 23, Muskö Sjöcentral.

Day	Time	Range from shore
August 21	0830 - 2100 LT	2.4 M
August 22	0830 - 2030 LT	3.8 M
	2030 - 2400 LT	2.4 M
August 23	0000 - 0200 LT	2.4 M
	0830 - 2130 LT	3.8 M
August 27	1500 - 2100 LT	2.4 M
August 28	0900 - 1600 LT	3.8 M
	1600 - 2100 LT	2.4 M
August 29	0900 - 1600 LT	3.8 M
	1600 - 2400 LT	2.4 M
August 30	0800 - 1800 LT	2.4 M

Position: Approx.	58-54N	018-20E	Utö Firing Danger Area
-------------------	--------	---------	------------------------

Not shown in ENC.

Bsp Stockholm S 2018/s17, s18, s19, s37

Försvarsmakten. Publ. 18 juli 2018

Lake Mälaren and Södertälje kanal

* 12756

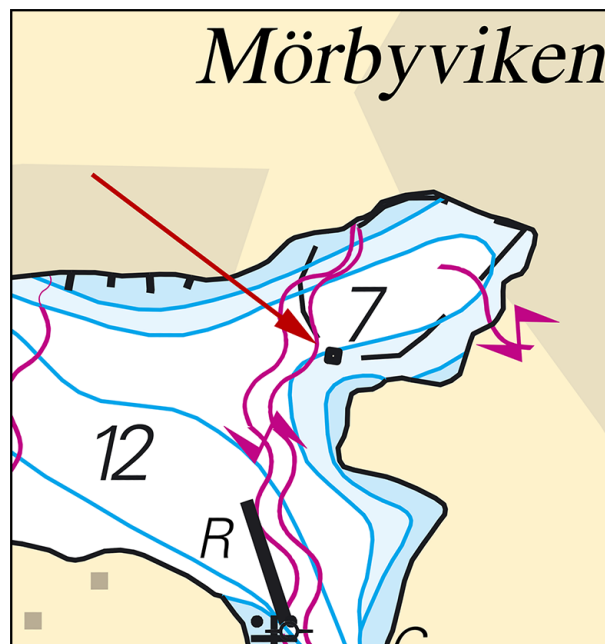
Chart: 6142

Sweden. Lake Mälaren and Södertälje kanal. Djursholm. Mörbyviken. Danderyd. Floating helicopter platform.

A floating helicopter platform is installed on a pontoon outside the Danderyd hospital.

Insert	pontoon	59-23,486N	018-01,800E
--------	---------	------------	-------------

Bsp Stockholm M 2018/s55



Helicopter platform Mörbyviken

Länsstyrelsen Stockholm. Publ. 17 juli 2018

* 13047

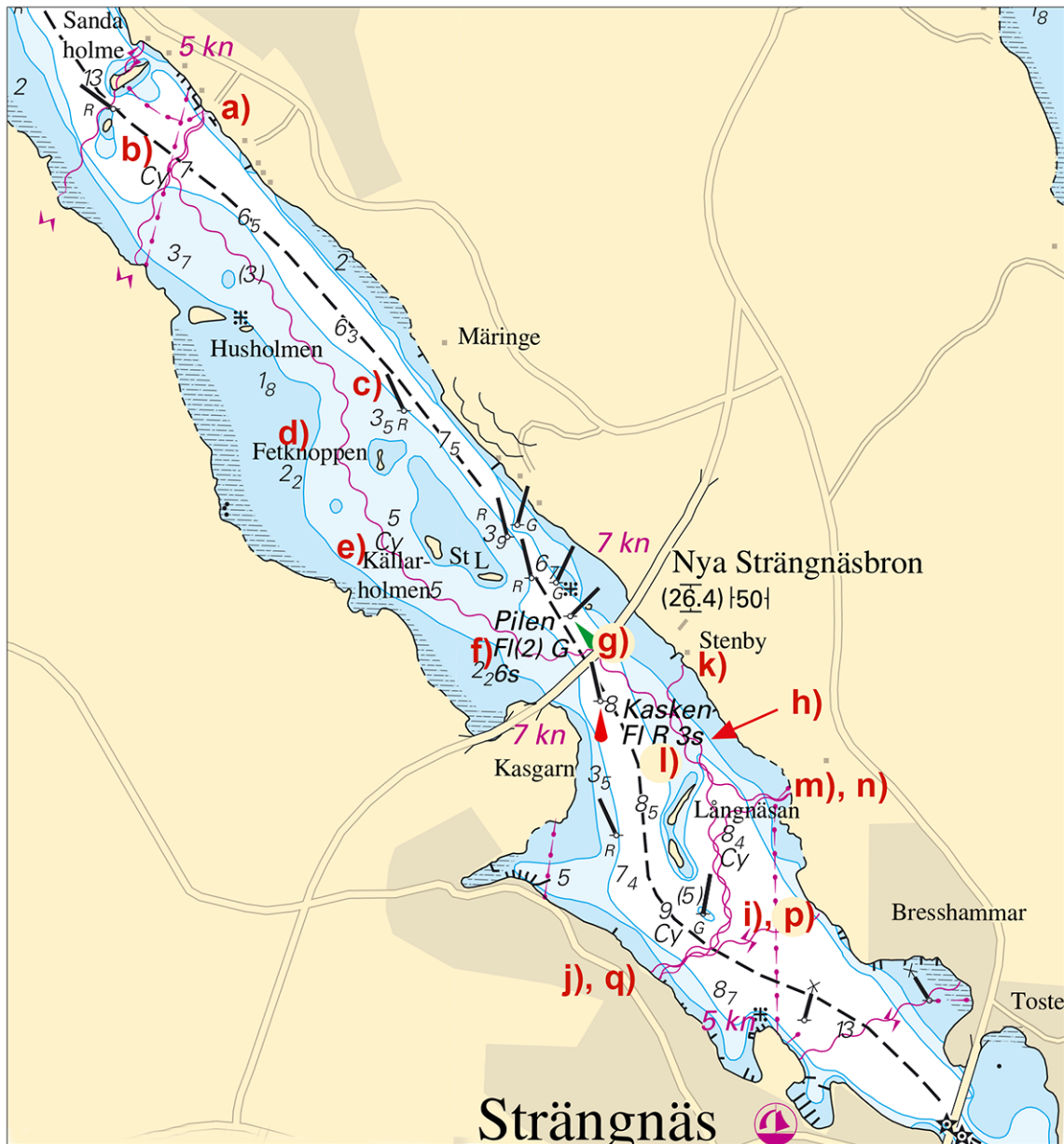
Chart: 113

Sweden. Lake Mälaren and Södertälje kanal. Strängnäs - Tosterön. New submarine cables.

Three new fiber optic cables at Strängnäs and Tosterön.

Insert	submarine cable a) - j)	a)	59-25,06N	016-58,84E
		b)	59-24,90N	016-58,69E
		c)	59-24,38N	016-59,51E
		d)	59-24,25N	016-59,45E
		e)	59-24,04N	016-59,66E
		f)	59-23,80N	017-00,30E
		g)	59-23,80N	017-00,64E
		h)	59-23,59N	017-01,13E
		i)	59-23,18N	017-01,26E
		j)	59-23,04N	017-00,93E
Insert	submarine cable k) - m)	k)	59-23,78N	017-01,04E
		l)	59-23,53N	017-01,13E
		m)	59-23,48N	017-01,52E
Insert	submarine cable n) - q)	n)	59-23,48N	017-01,52E
		o)	59-23,36N	017-01,18E
		p)	59-23,18N	017-01,26E
		q)	59-23,04N	017-00,93E

Bsp Mälaren - Hjälaren 2016/s26



New submarine cables, Strängnäs

Stadsnätsbolaget Sverige AB. Publ. 19 juli 2018

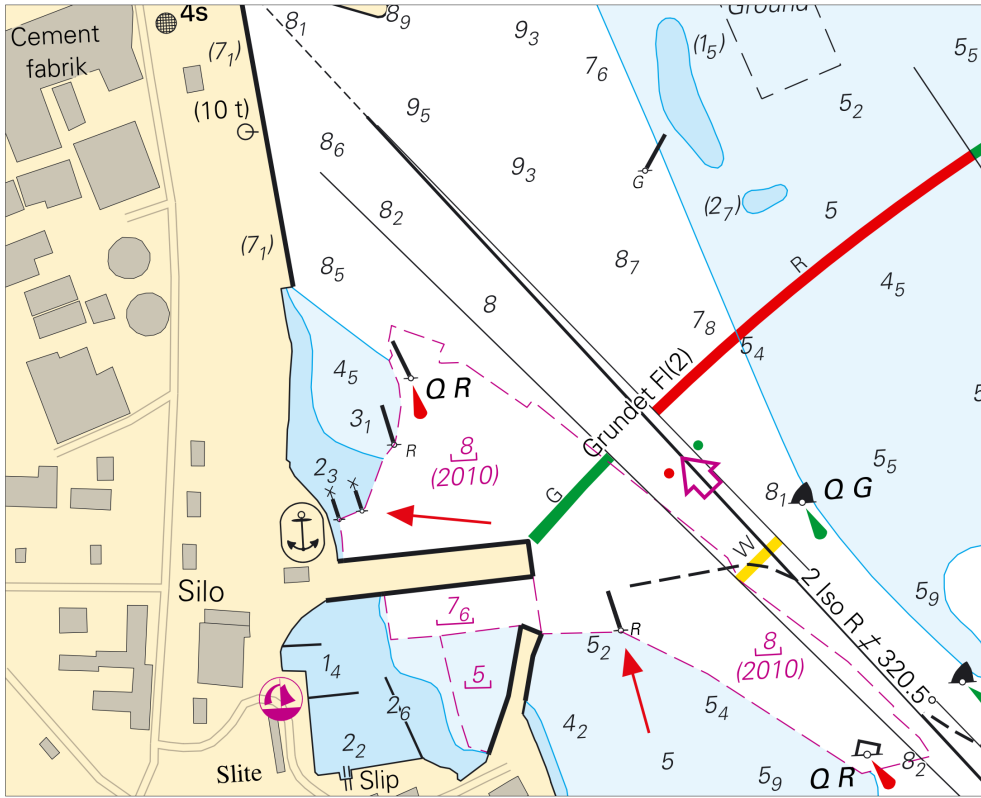
Central Baltic

* 13166

Chart: 731

Sweden. Central Baltic. Gotland. Slite. Special spar buoys. Port hand spar buoy.

Insert	specialprick with topmark	a)	57-42,470N	018-48,525E
Insert	specialprick with topmark	b)	57-42,473N	018-48,544E
Insert	port hand spar buoy	c)	57-42,412N	018-48,758E



Buoyage, Slite

Sjöfartsverket. Publ. 18 juli 2018

* 13190

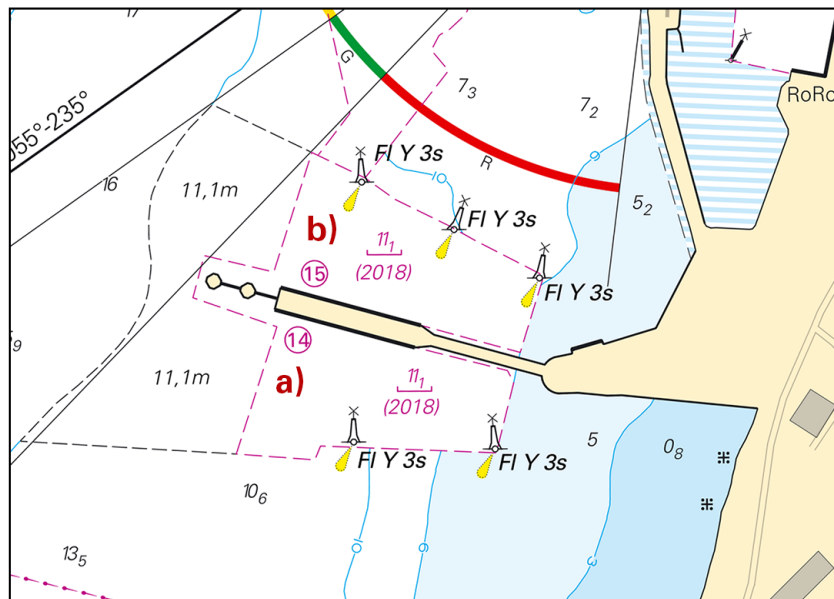
Chart: 731

Sweden. Central Baltic. Visby. S of harbour entrance. Berth designation.

See: 2018:698/12877

Insert	designation of berth "14"	a)	57-37,775N	018-16,063E
	designation of berth "15"	b)	57-37,784N	018-16,068E

Bsp Ostkusten 2015/s64



Cruise terminal - Port of Visby

Region Gotland. Publ. 18 juli 2018

Southern Baltic

* 13091 (T)

Chart: 74, 741, 7413, 742, 83

Sweden. Southern Baltic. BALEX DELTA 2018. Oil and chemical spill response exercise, August 27 - 30.

Time: August 27 - August 30, 2018.

Oil and chemical spill response exercise BALEX DELTA 2018 will be performed in the area marked in the chartlet.

The main exercise will be performed from August 28 0600 LT to August 29 1700 LT. During the stated times the approx. 20 participating vessels will be moving in and out between the practice area and port of Karlskrona. During the exercise, popcorn will be released in the water as a substitute to oil.

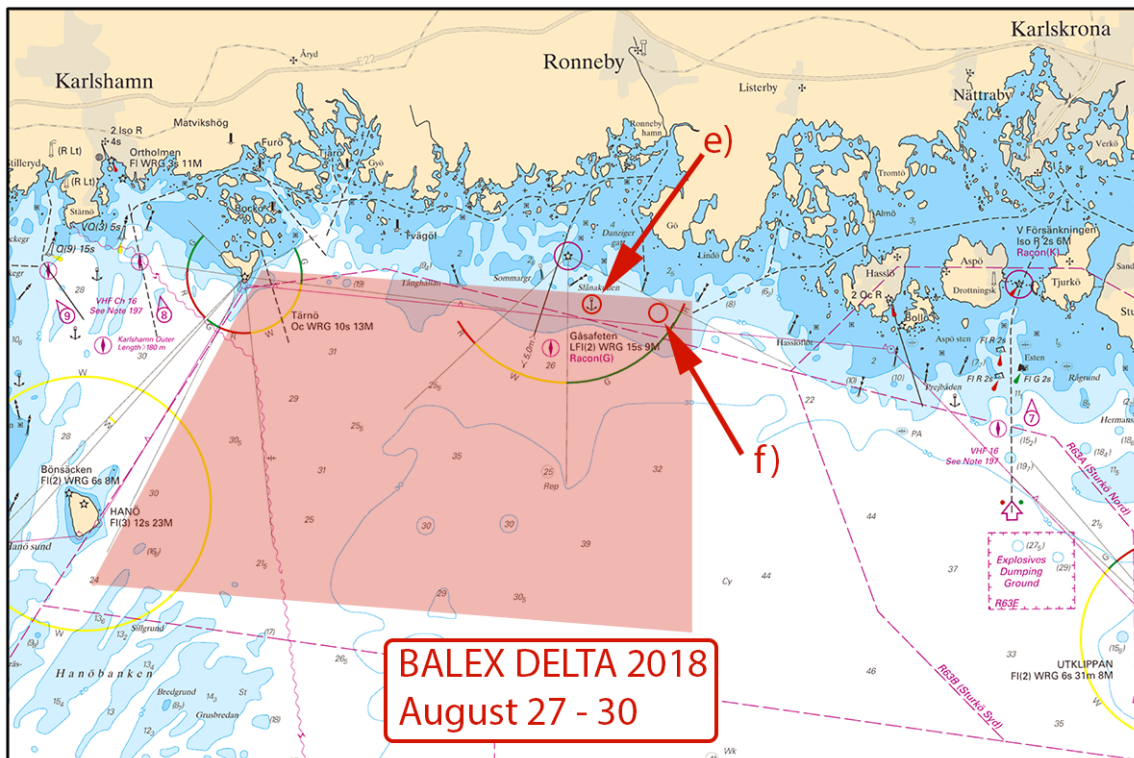
Swedish Navy vessel 'Belos' will be at anchor and act as distressed vessel.

A container will be lowered in position N56°05,74' E015°17,60' on August 22 and will remain there until August 31.

The container will be marked out with a special mark.

Exercise area	a)	56-06,60N	015-00,00E
	b)	56-06,00N	015-19,00E
	c)	55-58,50N	014-51,00E
	d)	55-58,00N	015-19,00E
Position where 'Belos' will be anchored	e)	56-05,89N	015-14,55E
Container position	f)	56-05,74N	015-17,60E

Bsp Hanöbukten 2014/s06, s18, s19, s21, s23, s45, Bsp Hanöbukten 2018/s06, s18, s19, s21, s23, s45



BALEX DELTA 2018

Kustbevakningen. Publ. 19 juli 2018

* 13180 (T)

Chart: 7, 74, 742, 743, 8, 83

Sweden. Southern Baltic. S of Åhus. Ravlunda. Firing exercises. August 20 - 25, 2018.

Position: Approx.	55-46N	014-20E	Firing restriction area R34 RAVLUNDA
-------------------	--------	---------	--------------------------------------

Restriction area R34 will be closed for vessels during stated times.

During practice orange quick light, Q Or, is shown from shore.

For further information, call +46 44 35 10 32.

Day	Hours	Range
August 20 - 25	0900 - 1700 LT	6.8 M
August 23	0900 - 2200 LT	6.8 M
August 24 - 25	0900 - 1700 LT	6.8 M

Not shown in ENC.

Bsp Hanöbukten 2014/s06, s07, s24, s25, s26, s27, s28, s29, s30, s31, s32, s33, Bsp Hanöbukten 2018/s06, s07, s24, s25, s26, s27, s28, s29, s30, s31, s32, s33, Bsp Sydkusten 2012/s06, s07, s29

Försvarmakten, Södra Skånska Regementet, Södra Sandby. Publ. 18 juli 2018

13262 (T)

Chart: 74, 83, 839

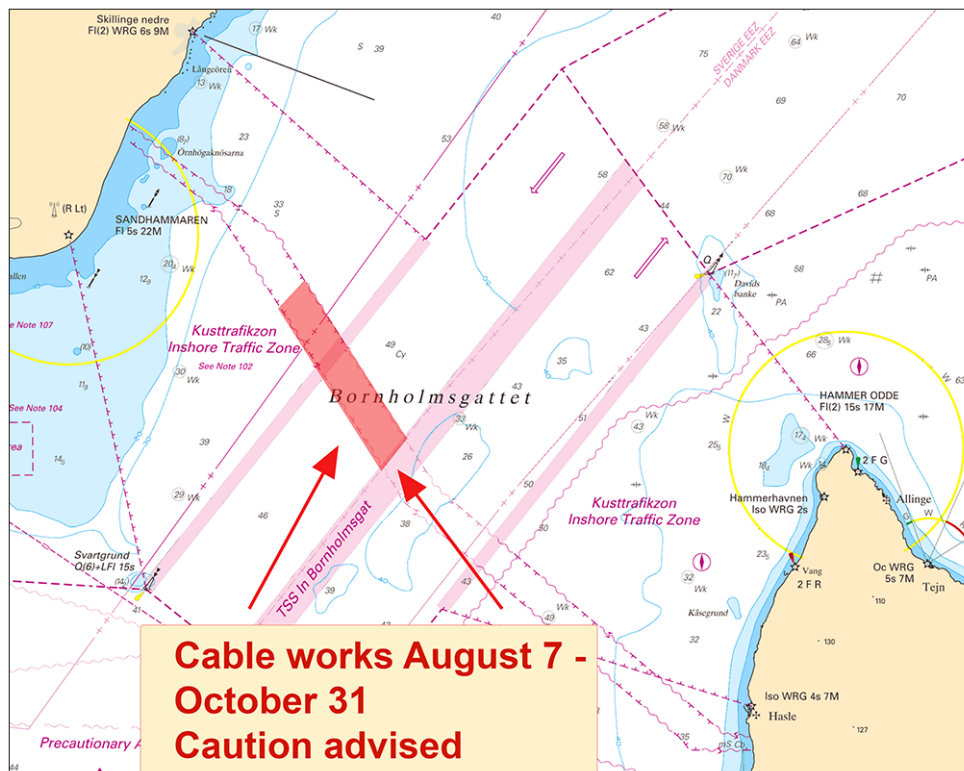
Sweden. Southern Baltic. Bornholmsgattet. TSS In Bornholmsgat and Inshore Traffic Zone. Cable works.

Time: August 7 - October 31, 2018

Cable works by vessel Sima/OUXR2 within the cable area in both TSS In Bornholmsgat and the Inshore Traffic Zone. Work is conducted with underwater equipment and the vessel will have restricted manouverability. It will be possible to pass the area at all times but great caution is advised.

TSS In Bornholmsgat	55-19N	014-24E
---------------------	--------	---------

Bsp Hanöbukten 2014/s07, Bsp Hanöbukten 2018/s07, Bsp Sydkusten 2012/s06, s07, s28, s29



Cable works

Energinet. Publ. 19 juli 2018

The Sound

* 12972 (P)

Chart: 921

Sweden. The Sound. Skanör. Adjustments to light.

Adjustments will be made to the sector lights on light Skanör. Mariners are advised to navigate with caution.

Light Skanör	55-25,017N	012-49,684E
--------------	------------	-------------

Not shown in ENC.

Adm. LoL. C2414

Bsp Sydkusten 2012/s51

Sjöfartsverket. Publ. 19 juli 2018

* 13194 (T)

Chart: 8141, 921, 9211

Sweden. The Sound. Port of Malmö. Suellshamnen, Inre hamnen and part of Yttre Hamnen. Triathlon contest. Restricted area.

Times of closure:

Aug 3, 1045 - 1245 LT

Aug 4, 1030 - 1330 LT, 1430 - 1600 LT, 1700 - 1830 LT

Aug 5, 0830 - 1400 LT

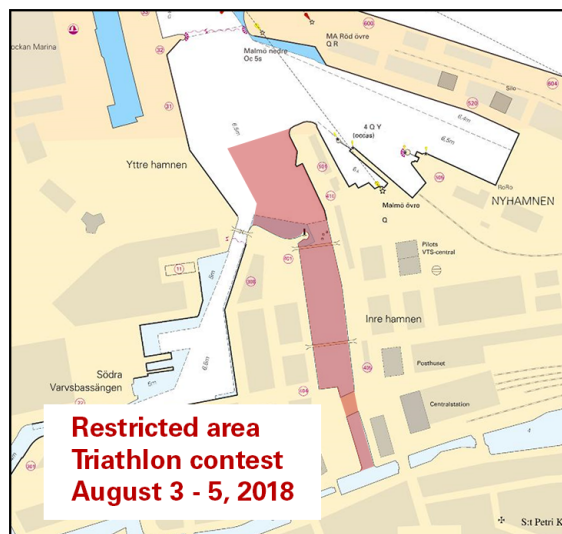
The marked-out area in the chartlet is restricted for all unauthorised vessel traffic, including anchoring, during the stated time.

Contestants, functionaries or organizers participating in the event are exempt.

Port of Malmö - Inre hamnen	55-36,821N	012-59,693E
-----------------------------	------------	-------------

Not shown in ENC.

Bsp Sydkusten 2012/s17, s38, s39, s44, s45, s46



Restricted area Malmö hamn

Länsstyrelsen, Skåne. Publ. 18 juli 2018

* 13255 (T)

Chart: 8141, 921, 9211

Sweden. The Sound. Port of Malmö. Shoaling.

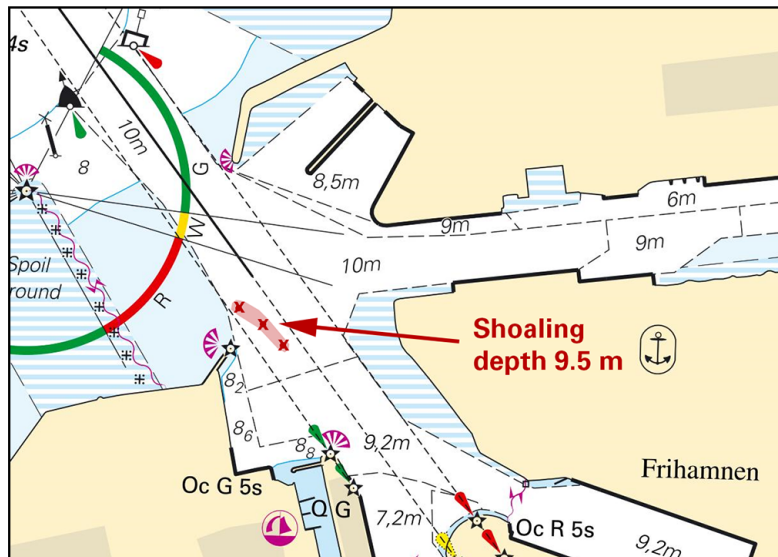
Time: Until further notice

Three areas have been found to exist in the harbour basin where the depth is less than 10.0 metres.

A dredging operation will start on August 14, 2018 and will continue until depths have been restored.

Port of Malmö			
reduced depth 9.5 m in pos. a) - c)	a)	55-37,34N	012-59,10E
	b)	55-37,32N	012-59,16E
	c)	55-37,29N	012-59,21E

Bsp Sydkusten 2012/s38, s44, s46



Shoaling Port of Malmö

Copenhagen Malmö Port AB. Publ. 18 juli 2018

Kattegat

* 13236 (T)

Chart: 92, 923, 924

Sweden. Kattegat. W of Halmstad. Ringenäs. Firing exercise. August 6.

Position: Approx.	56-40,8N	012-38,6E	Firing restriction area R41 A RINGENÄS
-------------------	----------	-----------	----------------------------------------

Firing will take place at Ringenäs firing range during stated times. The dangerous area extending from shore according to table below. A light on shore, VQ R, will be shown during firing. Part of restriction area R41A will be closed for vessels during stated times. During practice, light VQ R is shown from shore. For further information call +46 35 266 39 55, +46 35 536 77.

Day	Time	Range
August 6	0900 - 1530 LT	3,8 M

Not shown in ENC.
Bsp Västskusten S 2016/s29, s30

Försvarsmakten, Lv6. Publ. 18 juli 2018

Lake Vänern and Trollhätte kanal

* 13213

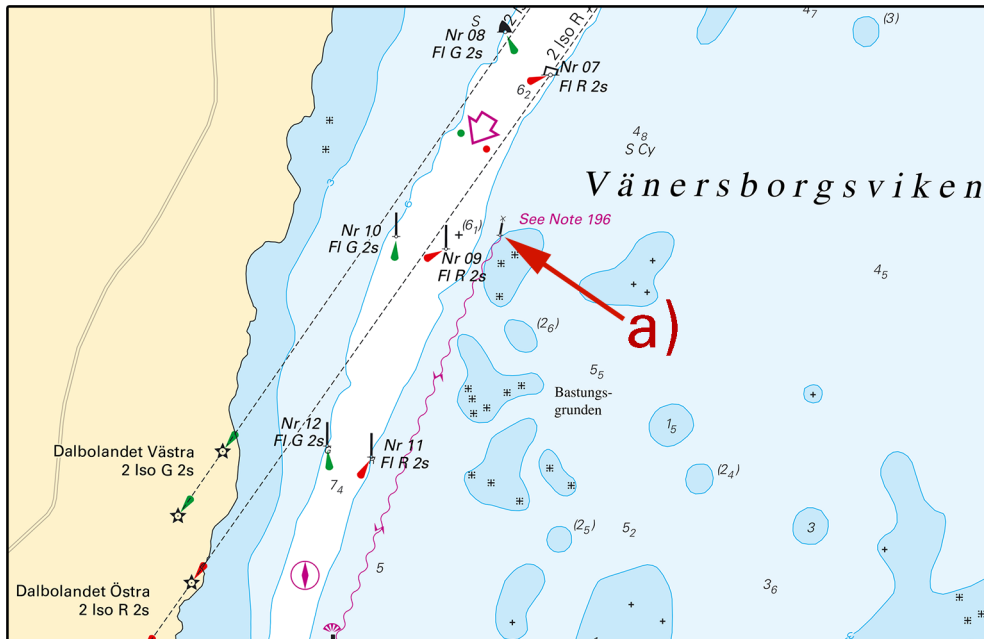
Chart: 135, 1353

Sweden. Lake Vänern and Trollhätte kanal. Vänern. Vänersborgsviken. Bastungsgrunden. Buoyage.

Expired notices: 2018:699/13006(T)

Replace	beacon with	special spar buoy with top mark	a)	58-23,981N	012-19,434E
---------	-------------	---------------------------------	----	------------	-------------

Bsp Göta kanal 2011/s62, Bsp Vänern 2018/s50



Special spar buoy, Bastungsgrunden