

## Notices to Mariners, SWEDEN Swedish Maritime Administration



### Areas in Swedish Notices to Mariners



**SJÖFARTSVERKET**

Editorial office  
Swedish Maritime Administration  
Ufs  
601 78 NORRKÖPING  
Sweden  
tel: 0771 630 605  
e-mail: [ufs@sjofartsverket.se](mailto:ufs@sjofartsverket.se)  
Publisher:  
Hydrographer Patrik Wiberg



## ANNOUNCEMENTS

\* 13242

Chart: 5121, 6171, 6181

**New print of charts. New edition of chart 5121, 6171 and 6181.**

A new print of the following nautical charts are available from July 2018:

Chart	Edition
5121	9.0 NEW EDITION
6171	11.0 NEW EDITION
6181	11.0 NEW EDITION

A NEW EDITION is a print of an existing chart, containing changes significant to navigation which are not possible to fully describe in the Swedish NtM.

*Sjöfartsverket, Norrköping. Publ. 7 juli 2018*

## NOTICES

### Gulf of Finland

\* 12978 (T)

Chart: 6, 7

**Sweden. Northern Baltic, Gulf of Finland, Central Baltic, South-Eastern Baltic, Southern Baltic. NE, SE of Gotland. Underwater works. Nord Stream 2.**

Time: July - September, 2018.

Underwater operations will take place at the locations listed below.

Rocks will be dumped on the seabed as a preparation for the laying of gas pipelines.

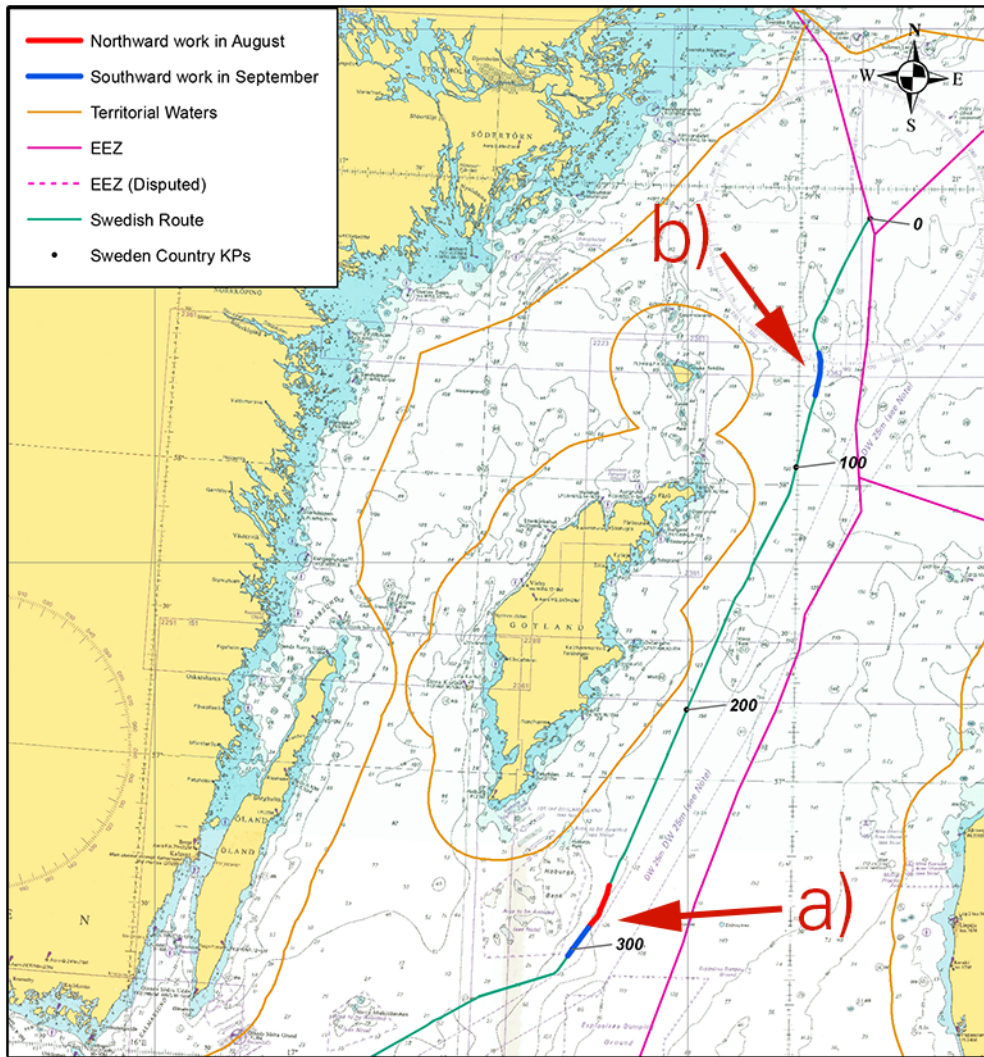
The works will be carried out by the vessel Oceanic (9HA4426) and Bravenes (PDCF).

The time schedule is depending on the weather situation and is very approximate.

Requested safety zone: 500 m radius around vessel during rock placement activities.

E of Hoburgs bank	a)	56-32,6N	018-50,1E
E of Gotska sandön	b)	58-25,8N	020-08,2E

Not shown in ENC



Rock placement operations, NordStream2

Nord Stream 2 Publ. 12 juli 2018

**Northern Baltic**

\* 13228 (T)

Chart: 621

**Sweden. Northern Baltic. Arkösund. Lindöfjärden. Swimming competition. Limited navigability.**

Time: July 29, 2018, 1230 - 1615 LT

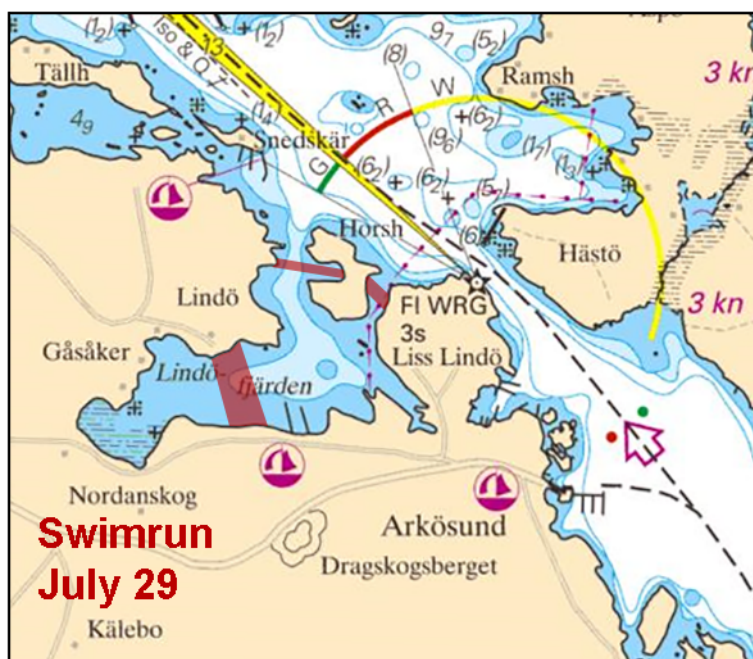
A running and swimming competition will be held at Arkösund, over Lindöfjärden and Horsholmen, along the charted route.

Guard vessels will be in the area.

Lindöfjärden	58-29,60N	016-55,33E
--------------	-----------	------------

Not shown in ENC.

Bsp Ostkusten 2015/s35, s37, s62



Swimrun, Arkösund

Länsstyrelsen, Östergötlands län. Publ. 11 juli 2018

\* 13237

Chart: 611, 612, 619

Sweden. Northern Baltic. Söderarm - Södra Ljusterö. Furusundsleden. Amended buoyage.

<b>Move</b>	north cardinal spar buoy with top mark to	a)	59-45,704N	019-27,428E
<b>Move</b>	starboard hand light buoy FI(2) G 6s to	b)	59-43,489N	019-06,576E
<b>Move</b>	port hand light buoy FI R 3s to	c)	59-43,226N	019-06,940E
<b>Move</b>	port hand spar buoy to	d)	59-41,214N	019-00,564E
<b>Move</b>	port hand light buoy QR to	e)	59-41,019N	018-59,078E
<b>Move</b>	starboard hand spar buoy to	f)	59-40,690N	018-57,802E
<b>Replace</b>	north cardinal spar buoy with port hand spar buoy	g)	59-40,342N	018-57,798E
<b>Delete</b>	north cardinal spar buoy	h)	59-40,000N	018-57,078E
<b>Insert</b>	port hand spar buoy	i)	59-40,021N	018-57,056E
<b>Move</b>	port hand light buoy FI(2) G to	j)	59-38,101N	018-51,604E
<b>Move</b>	starboard hand spar buoy to	k)	59-34,731N	018-40,791E
<b>Delete</b>	east cardinal spar buoy	l)	59-34,483N	018-40,434E
<b>Insert</b>	south cardinal spar buoy with top mark	m)	59-34,456N	018-40,431E
<b>Move</b>	port hand spar buoy to	n)	59-29,673N	018-28,019E

Bsp Stockholm N 2018/s23, s25, s27, s28, s30, s38, s39

Sjöfartsverket, Norrköping. Publ. 12 juli 2018

\* 13244 (T)

Chart: 6212

Sweden. Northern Baltic. Port of Norrköping. Buoyage.

See: 2018:709/13209(T)

Time: Until further notice

During the dredging operations in Norrköping, a spar buoy is moved closer to 'Blixholmen' and should not be used for navigation.

Moved spar buoy	58-36,347N	016-13,063E
-----------------	------------	-------------

Not shown in ENC.

Bsp Ostkusten 2015/s58, s59



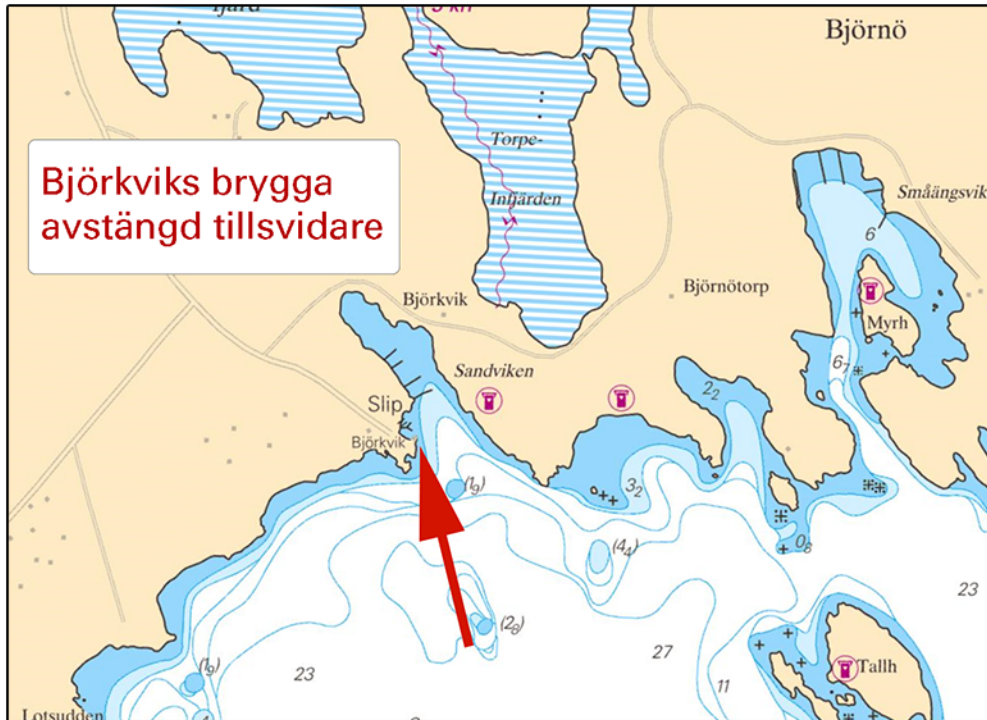
\* 13246 (T)

Chart: 6145

Sweden. Northern Baltic. (not translated)

59-13,25N	018-32,38E
-----------	------------

Bsp Stockholm M 2018/s28, s35, s36, s48



txtBeskrEng

Trafikverket. Publ. 12 juli 2018

### Lake Mälaren and Södertälje kanal

\* 13240 (T)

Chart: 113, 1131

Sweden. Lake Mälaren and Södertälje kanal. Bridge 'Kvicksundsbron'. Maintenance works. Bridge will not open August 21, 2018.

Time: August 21, 0100 - 0300 LT.

Bridge 'Kvicksundsbron' will not open due to maintenance work.

Bridge 'Kvicksundsbron'	59-27,16N	016-19,16E
-------------------------	-----------	------------

Not shown in ENC.

Bsp Mälaren - Hjälaren 2016/s19, s20, s57

Trafikverket. Publ. 11 juli 2018

### Kattegat

\* 13248 (P)

Chart: 924

Sweden. Kattegat. Falkenberg. Leading lights moved.

Time: July and August 2018

The leading lights in Falkenberg will be moved to new positions at the end of July. They will be unlit during some time and the leading line will be unreliable during some time before the new positions have been properly established.

Port of Falkenberg	56-53,24N	012-28,38E
--------------------	-----------	------------

Not shown in ENC.

Bsp Västkusten S 2016/s27, s66

Farledsteknik AB Publ. 12 juli 2018

## Skagerrak

\* 12939 (T)

Chart: 8, 93, 932

Sweden. Skagerrak. SW of Orust. Måseskär. Historic lighthouse temporarily lit. Ordinary light temporarily unlit.

Time: August 5 - 12, 2018.

The historic lighthouse on island Måseskär is temporarily lit during the stated time.

At the same time, the ordinary light on Måseskär (FI(3) WRG 30s 16M) will be temporarily unlit.

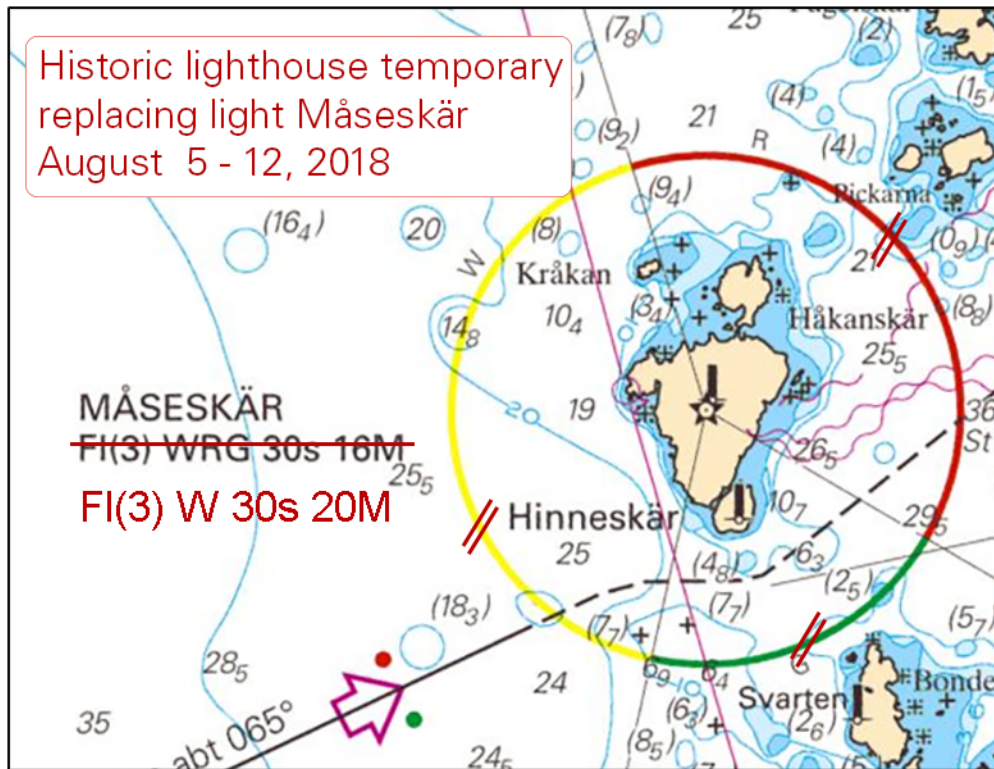
Måseskär historic lighthouse FI(3) W 30s 20M	58-05,64N	011-19,83E
--	-----------	------------

Adm LoL: C0456

Bsp Västkusten N 2016/s22, Bsp Västkusten S 2016/s10



Historic light house at island Måseskär (Photo: Björn Aschan, Stiftelsen Måseskär)



Måseskär

Stiftelsen Måseskär, Transportstyrelsen och Sjöfartsverket. Publ. 12 juli 2018

### Lake Vänern and Trollhätte kanal

\* 13245

Chart: 135, 1353

Sweden. Lake Vänern and Trollhätte kanal. Vänersborgsviken. Bastungsgrunden. Light buoy restored.

Expired notices: 2018:699/13010(T)

Porthand light buoy by Bastungsgrunden is restored.

Porthand light buoy	58-23,97N	012-19,33E
---------------------	-----------	------------

Bsp Göta kanal 2011/s62, Bsp Vänern 2018/s50

Sjöfartsverket. Publ. 11 juli 2018