

Notices to Mariners, SWEDEN Swedish Maritime Administration



Areas in Swedish Notices to Mariners



SJÖFARTSVERKET

Editorial office
Swedish Maritime Administration
Ufs
601 78 NORRKÖPING
Sweden
tel: 0771 630 605
e-mail: ufs@sjofartsverket.se
Publisher:
Hydrographer Patrik Wiberg

Affected charts and Notices

Underrättelser för sjöfarande (Ufs) is an official Swedish publication which provides information pertaining to shipping in the Baltic Sea Area and Kattegat, as well as Skagerrak east of a line drawn between Hanstholm and Lindesnes.

The information on foreign waters is largely confined to significant occurrences which may affect Swedish charts. Ufs is thus wholly unsuited for the purpose of keeping BA-charts and/or other national charts updated.

An asterisk (*) in front of the number denotes that the notice is based on information obtained from Swedish source material and that the details contained therein affect Swedish waters.

When the letter (**P**) is adjacent to the notice number it serves as an indication that the notice is of a preliminary nature. Such notices will later be replaced by corresponding ones containing definitive information.

Similarly, when the letter (**T**) is placed adjacent to the notice number it denotes that the notice is of a temporary nature. In case no period of validity is given, this type of notice will be rendered invalid either when a new Temporary Notice is promulgated or if pertaining conditions cease to exist.

Bearings are true and given clockwise from 000° to 360° and, when given in conjunction with lights, indicate a direction from seaward.

Featured chartlets are primarily intended to simplify chart correction work and are not always true to scale. In general, they show the largest charted scale available for respective area.

Responsibility for the factual content published in Ufs rests with the informant.

Chart corrections and other information attributed to a specific geographical area can be found under NOTICES. Other information is found under ANNOUNCEMENTS, starting on pg. 3.

The periodical Ufs is normally published every Thursday and can be downloaded as a PDF-file from the homepage of the Swedish Maritime Administration. Note that as the file is automatically generated from a database unintentional page breaks may occur at random.

Further information on the use of Ufs can be found in the annual publication *Ufs A*.

Reporting dangers and errors

All observations concerning floating aids to navigation, unlit beacons and lights, objects adrift or any other occurrence which may have a detrimental impact on safety at sea are to be forwarded to MSI Sweden at the earliest possible opportunity.

Call: MSI Sweden

VHF Channel: Appropriate working channel

Phone: +46 771 630 685 (24/7)

E-mail: msi@sjofartsverket.se

| Affected charts | Notice no | Si gn | Affected charts | Notice no | Si gn |
|-----------------|-----------|-------|-----------------|-----------|-------|
| 2 | 13185 | | 9211 | 13150 (T) | |
| 4 | 13188 | | 9313 | 13113 | |
| 4 | 13195 | | | | |
| 5 | 12614 | | | | |
| 5 | 13195 | | | | |
| 41 | 13188 | | | | |
| 42 | 13195 | | | | |
| 52 | 13187 | | | | |
| 53 | 12614 | | | | |
| 62 | 12913 | | | | |
| 71 | 13134 | | | | |
| 74 | 13134 | | | | |
| 83 | 13134 | | | | |
| 131 | 12966 (T) | | | | |
| 132 | 12966 (T) | | | | |
| 412 | 13176 | | | | |
| 429 | 13195 | | | | |
| 513 | 13195 | | | | |
| 612 | 13179 | | | | |
| 623 | 12932 (T) | | | | |
| 624 | 12913 | | | | |
| 731 | 13173 | | | | |
| 741 | 13134 | | | | |
| 742 | 13165 (T) | | | | |
| 743 | 13066 | | | | |
| 839 | 13066 | | | | |
| 921 | 13108 | | | | |
| 921 | 13150 (T) | | | | |
| 925 | 13196 (T) | | | | |
| 937 | 12996 | | | | |
| 6142 | 13036 | | | | |
| 6171 | 13149 | | | | |
| 6172 | 13149 | | | | |
| 6173 | 13191 | | | | |
| 6181 | 13196 (T) | | | | |
| 7411 | 13134 | | | | |
| 7421 | 13165 (T) | | | | |
| 8141 | 13150 (T) | | | | |

ANNOUNCEMENTS**13185****Chart: 2****NAVTEX. Tallinn Radio. Transmission time and B1 character will be changed 01 July.**

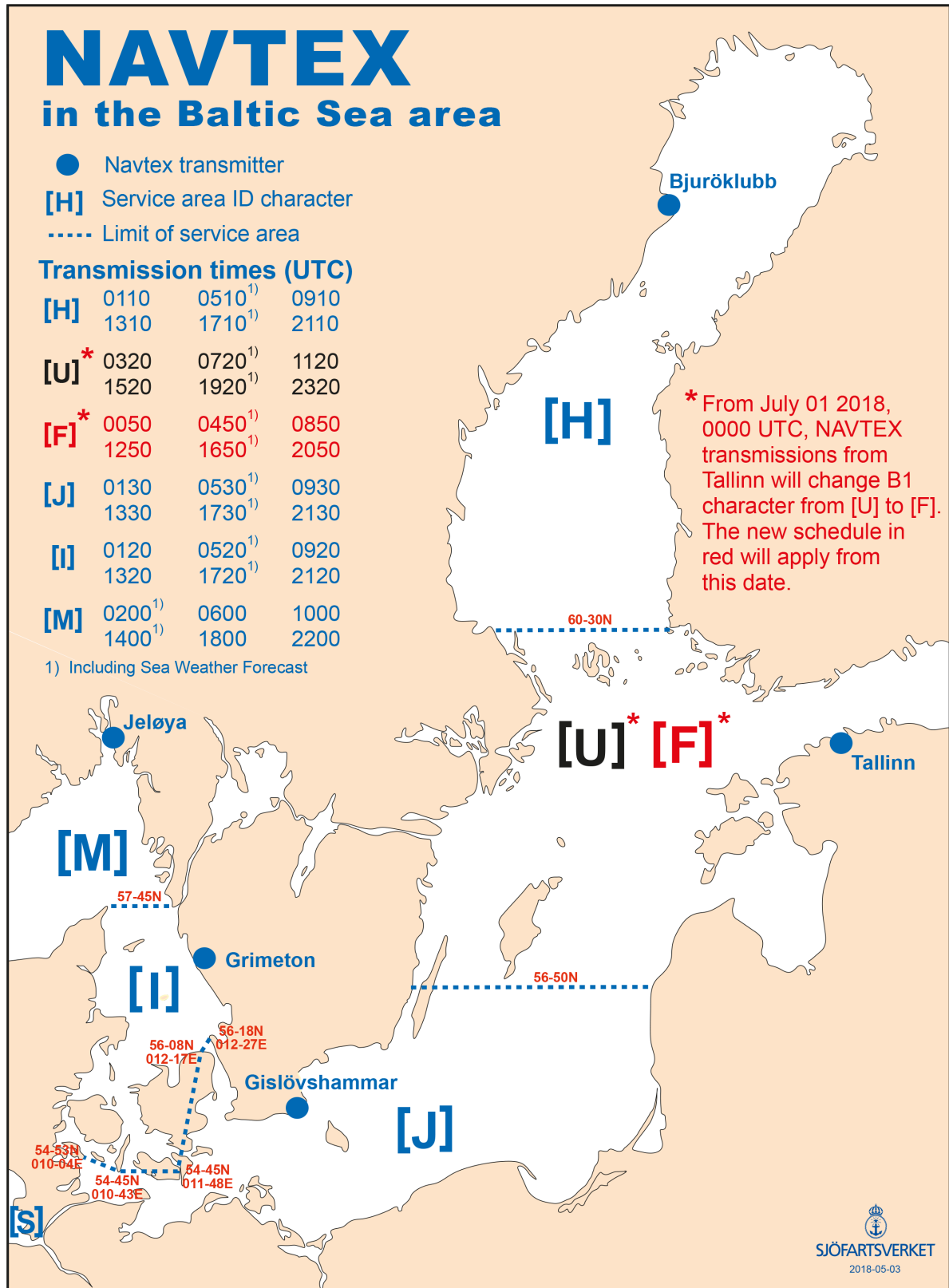
Expired notices: 2018:702/13049(P)

From July 1, 2018, 0000 UTC Navtex station TALLINN changes scheduled transmission times and B1-character from U to F.

The following times apply for the scheduled transmissions from this time: 0050, 0450, 0850, 1250, 1650, 2050 UTC.
A 24-hour weather forecast will be included in the following transmissions: 0450 and 1650 UTC.

Ufs A: Chapter 11.2.2.

DE2911 Mariners' Routeing Guide Baltic Sea, INT1200.



NAVTEX map for the Baltic Sea region
 Sjöfartsverket, Tallinn Radio (RIKS) and IMO NAVTEX Coordinating Panel. Publ. 21 juni 2018

* 13200

(not translated)

Göteborgs hamn, Göteborg. Publ. 21 juni 2018

NOTICES**Bay of Bothnia***** 13176****Chart: 412****Sweden. Bay of Bothnia. S of Kalix. Gunnarsfjärden. Spar buoy withdrawn.**

| | | | |
|---------------|---------------------|-----------|------------|
| Delete | port hand spar buoy | 65-40,83N | 023-25,94E |
|---------------|---------------------|-----------|------------|

Bsp Bottenviken 2014/s11, s15, Bsp Bottenviken 2018/s11, s15

*Sjöfartsverket, Norrköping. Publ. 20 juni 2018***13188****Chart: 4, 41****Finland. Bay of Bothnia. Oulo. Karlö. Fairways.**

| | | | | |
|---------------|-----------------------|----|------------|-------------|
| Delete | fairway 8,0 m a) - b) | a) | 65-05,520N | 024-07,230E |
| | | b) | 65-05,920N | 024-15,000E |
| Insert | fairway 9,5 m c) -d) | c) | 65-05,127N | 024-06,796E |
| | | d) | 65-05,600N | 024-14,880E |

Bsp Bottenviken 2014/s03, Bsp Bottenviken 2018/s03

*Finnish NtM 2018:15/166. Publ. 20 juni 2018***The Quark***** 13195****Chart: 4, 42, 429, 5, 513****Sweden. The Quark. SW of Umeå. S of Hörnefors. Lighthouse demolished.**

Expired notices: 2018:705/13096

The lighthouse building to the extinguished light 'Lögaren' has been demolished.

| | | | |
|---------------|-------------------|-----------|------------|
| Delete | beacon in general | 63-32,86N | 020-00,52E |
|---------------|-------------------|-----------|------------|

Adm. LoL C5903

Bsp Bottenhavet N 2013/s07, s28, s30, s31

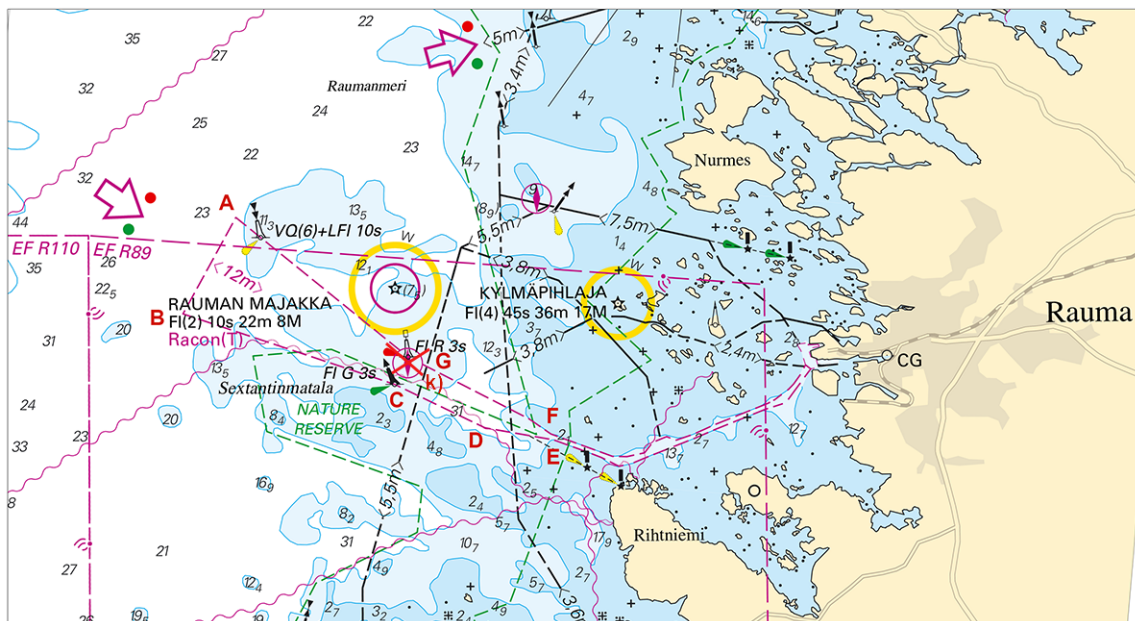
*Sjöfartsverket, Norrköping. Publ. 20 juni 2018***Sea of Bothnia****12614****Chart: 5, 53****Finland. Sea of Bothnia. Rauma. Amended fairway. Amended floating and fixed aids to navigation.**

Amend the fairway area by changing to the following positions:

| | | |
|----|------------|-------------|
| A) | 61-10,324N | 021-03,480E |
| B) | 61-08,537N | 021-01,426E |
| C) | 61-07,205N | 021-09,552E |
| D) | 61-06,385N | 021-13,011E |
| E) | 61-06,153N | 021-15,631E |
| F) | 61-06,261N | 021-15,542E |
| G) | 61-07,711N | 021-10,080E |

| | | | | | |
|----------------|---|----|-----------|------------|--|
| Amend | characteristics to FI(2) W 10s 22m 8M Racon T | a) | 61-08,99N | 021-09,59E | Rauman Majakka |
| Delete | south cardinal spar buoy | b) | 61-10,23N | 021-04,60E | |
| Insert | south cardinal light buoy | c) | 61-09,95N | 021-04,44E | |
| Insert | port hand light buoy | d) | 61-07,71N | 021-10,08E | |
| Delete | port hand spar buoy | e) | 61-06,54N | 021-14,71E | For details, see chart in better scale |
| Delete | port hand mark | f) | 61-06,27N | 021-15,57E | For details, see chart in better scale |
| Delete | starboard hand mark | g) | 61-06,14N | 021-15,62E | For details, see chart in better scale |
| Replace | fairway area with fairway <7,5m> h) - i) | h) | 61-10,71N | 021-13,65E | For details, see chart in better scale |
| | | i) | 61-09,84N | 021-21,67E | For details, see chart in better scale |
| Delete | pilot boarding place | j) | 61-07,60N | 021-10,05E | |
| Insert | pilot boarding place | k) | 61-07,25N | 021-10,75E | Rauma S |

Adm LoL C: 4417



Rauma

Finnish NtM 2017:24/252, Finnish NtM 2017:34/371 & Finnish NtM 2018:7/65. Publ. 20 juni 2018

13187

Chart: 52

Finland. Sea of Bothnia. Korsnäs. Storkallegrund. Buoyage.

| | | | | | |
|---------------|--|----|------------|-------------|----------------|
| Move | south cardinal spar buoy to | a) | 62-39,232N | 020-51,314E | |
| Delete | east cardinal spar buoy | b) | 62-40,679N | 020-52,600E | |
| Move | west cardinal light spar buoy, VQ(9) 10s, to | c) | 62-40,484N | 020-42,278E | Storkallegrund |
| Move | north cardinal spar buoy to | d) | 62-41,665N | 020-49,753E | |

Finnish NtM 2018:15/161. Publ. 20 juni 2018

Sea of Åland and Archipelago Sea

* 13183

Chart:

Finland. Sea of Åland and Archipelago Sea. Mariehamn. Fairways. Buoyage.

| A | | | | |
|---------------|---|----|------------|-------------|
| Amend | max. authorised draught between a) - b) | a) | 60-02,56N | 019-53,42E |
| | | b) | 60-02,83N | 019-56,12E |
| Delete | fairway 8,2 m between c) - d) | c) | 60-03,840N | 019-54,780E |
| | | d) | 60-04,180N | 019-55,600E |
| Insert | fairway 8,2 m between e) - f) | e) | 60-03,840N | 019-54,776E |
| | | f) | 60-04,397N | 019-55,629E |

| B | | | | |
|---------------|------------------------------------|----|------------|-------------|
| Insert | fairway area swept to 10 m a) - n) | a) | 60-00,816N | 019-48,795E |
| | | b) | 60-01,460N | 019-48,207E |
| | | c) | 60-02,110N | 019-52,237E |
| | | d) | 60-01,995N | 019-52,429E |
| | | e) | 60-01,883N | 019-52,061E |
| | | f) | 60-01,748N | 019-52,036E |
| | | g) | 60-01,823N | 019-52,295E |
| | | h) | 60-01,885N | 019-52,414E |
| | | i) | 60-01,995N | 019-52,429E |
| | | j) | 60-02,115N | 019-53,165E |
| | | k) | 60-01,698N | 019-52,413E |
| | | l) | 60-00,044N | 019-48,821E |
| | | m) | 60-00,571N | 019-47,941E |
| | | n) | 60-00,816N | 019-48,795E |

| C | | | | |
|---------------|-------------------------------------|----|------------|-------------|
| Insert | fairway area swept to 9,7 m a) - i) | a) | 60-01,995N | 019-52,429E |
| | | b) | 60-02,110N | 019-52,237E |
| | | c) | 60-02,235N | 019-52,932E |
| | | d) | 60-02,420N | 019-53,158E |
| | | e) | 60-02,755N | 019-53,492E |
| | | f) | 60-02,733N | 019-53,720E |
| | | g) | 60-02,239N | 019-53,552E |
| | | h) | 60-02,115N | 019-53,165E |
| | | i) | 60-01,995N | 019-52,429E |

| D | | | | |
|---------------|---|----|------------|-------------|
| Insert | fairway area swept to 9,3 m between a) - i) | a) | 60-02,733N | 019-53,720E |
| | | b) | 60-02,755N | 019-53,492E |
| | | c) | 60-03,488N | 019-54,269E |
| | | d) | 60-03,694N | 019-54,511E |
| | | e) | 60-03,954N | 019-54,846E |
| | | f) | 60-03,875N | 019-55,173E |
| | | g) | 60-03,712N | 019-54,783E |
| | | h) | 60-03,601N | 019-54,671E |
| | | i) | 60-02,733N | 019-53,720E |

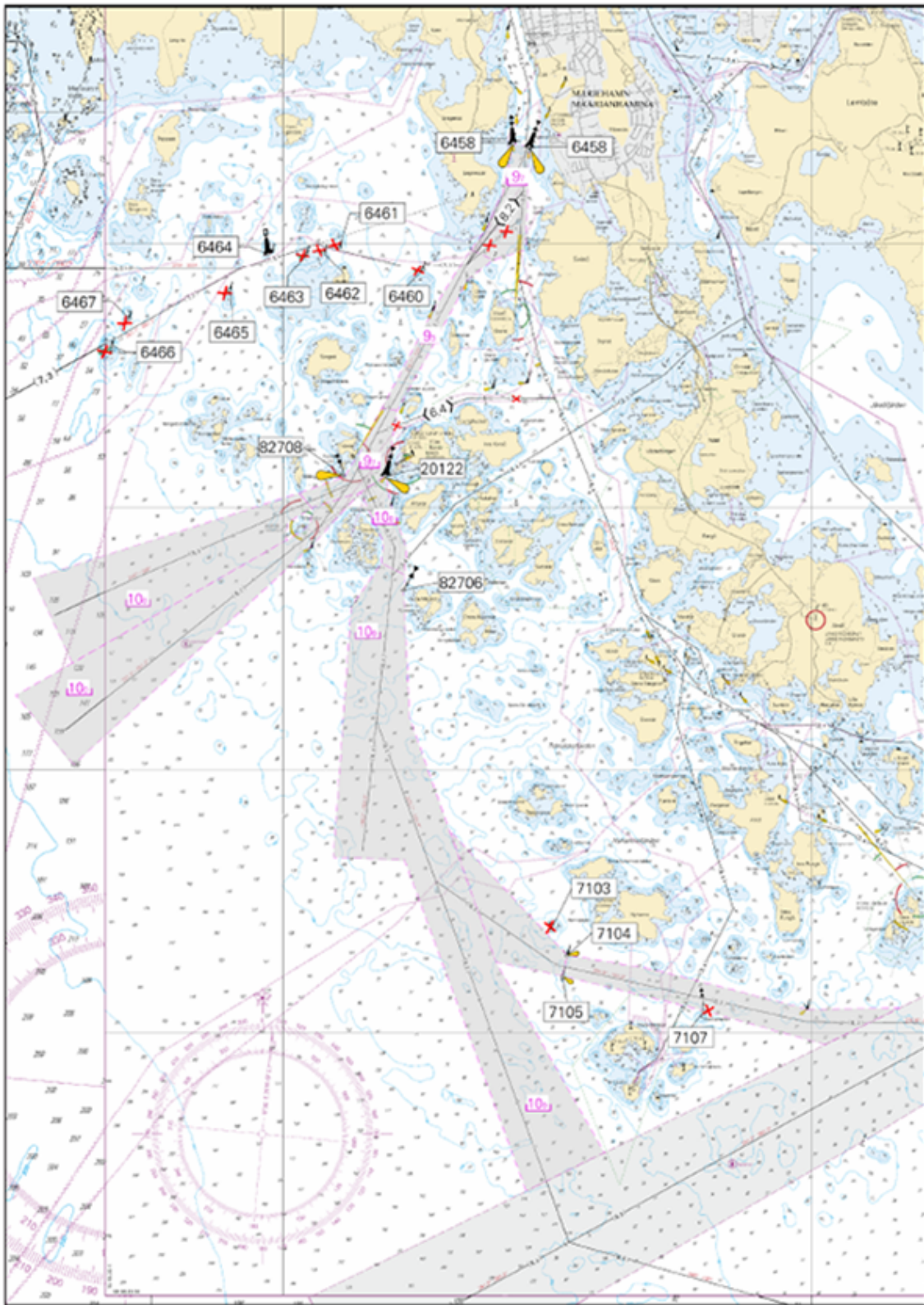
| | E | | | |
|---------------|---|----|------------|-------------|
| Insert | fairway area swept to 9,2 m between a) - h) | a) | 60-03,875N | 019-55,173E |
| | | b) | 60-03,954N | 019-54,846E |
| | | c) | 60-04,131N | 019-55,102E |
| | | d) | 60-04,382N | 019-55,323E |
| | | e) | 60-04,758N | 019-55,488E |
| | | f) | 60-04,727N | 019-55,725E |
| | | g) | 60-03,950N | 019-55,670E |
| | | h) | 60-03,875N | 019-55,173E |

| | F | | | |
|---------------|---|----|------------|-------------|
| Insert | fairway are swept to 10 m between a) - p) | a) | 59-56,798N | 019-55,676E |
| | | b) | 59-59,324N | 019-53,829E |
| | | c) | 59-59,337N | 019-52,760E |
| | | d) | 60-01,242N | 019-53,028E |
| | | e) | 60-01,575N | 019-53,483E |
| | | f) | 60-01,733N | 019-53,516E |
| | | g) | 60-02,115N | 019-53,165E |
| | | h) | 60-02,239N | 019-53,552E |
| | | i) | 60-02,017N | 019-53,632E |
| | | j) | 60-01,694N | 019-53,864E |
| | | k) | 60-01,488N | 019-53,836E |
| | | l) | 60-01,370N | 019-53,820E |
| | | m) | 60-00,401N | 019-53,915E |
| | | n) | 59-58,541N | 019-55,219E |
| | | o) | 59-57,091N | 019-56,864E |
| | | p) | 59-56,798N | 019-55,676E |

| | G | | | |
|---------------|------------------------------|----|------------|-------------|
| Insert | fairway area between a) - j) | a) | 59-57,914N | 020-00,205E |
| | | b) | 59-58,172N | 019-58,367E |
| | | c) | 59-58,436N | 019-56,230E |
| | | d) | 59-58,541N | 019-55,219E |
| | | e) | 59-59,544N | 019-54,516E |
| | | f) | 59-58,595N | 019-56,301E |
| | | g) | 59-58,483N | 019-57,625E |
| | | h) | 59-58,183N | 019-59,933E |
| | | i) | 59-58,192N | 020-01,334E |
| | | j) | 59-57,914N | 020-00,205E |

| | H | | | | |
|---------------|--|----|------------|-------------|---------------------------------------|
| Delete | south cardinal spar buoy | a) | 60-04,200N | 019-47,110E | |
| Amend | starboard hand light buoy to starboard hand buoy | b) | 60-03,231N | 019-49,397E | |
| Amend | port hand light buoy to port hand buoy | c) | 60-03,421N | 019-49,658E | |
| Amend | starboard hand light buoy to starboard hand buoy | d) | 60-03,641N | 019-51,187E | |
| Amend | port hand light buoy to port hand buoy | e) | 60-03,930N | 019-51,830E | |
| Amend | port hand light buoy to port hand buoy | f) | 60-03,919N | 019-51,780E | |
| Amend | starboard hand light buoy to starboard hand buoy | g) | 60-03,921N | 019-52,352E | |
| Amend | starboard hand light buoy to starboard hand buoy | h) | 60-03,926N | 019-52,621E | |
| Amend | port hand light buoy to port hand buoy | i) | 60-03,964N | 019-52,850E | |
| Amend | starboard hand light buoy to starboard hand buoy | j) | 60-03,798N | 019-54,110E | |
| Move | east cardinal light buoy to | k) | 60-04,758N | 019-55,488E | minor move, see picture for reference |
| Move | west cardinal light buoy to | l) | 60-04,727N | 019-55,725E | minor move, see picture for reference |
| Move | west cardinal light buoy to | m) | 60-02,240N | 019-53,552E | minor move, see picture for reference |
| Insert | south cardinal spar buoy | n) | 60-02,235N | 019-52,932E | |
| Insert | west cardinal spar buoy | o) | 60-01,370N | 019-53,820E | |
| Insert | south cardinal spar buoy | p) | 59-58,780N | 019-56,050E | |
| Amend | south cardinal buoy to south cardinal light buoy | q) | 59-58,595N | 019-56,301E | |
| Amend | north cardinal buoy to north cardinal light buoy | r) | 59-58,430N | 019-56,230E | |
| Amend | north cardinal buoy to north cardinal light buoy | s) | 59-58,437N | 019-56,230E | |
| Move | north cardinal spar buoy to | t) | 59-58,172N | 019-58,367E | minor move, see picture for reference |

Bsp Stockholm N 2018/s53, s54, s55, s56, s58



Picture from Finnish NtM

Finnish NtM 2018:13/132. Publ. 20 juni 2018

Northern Baltic

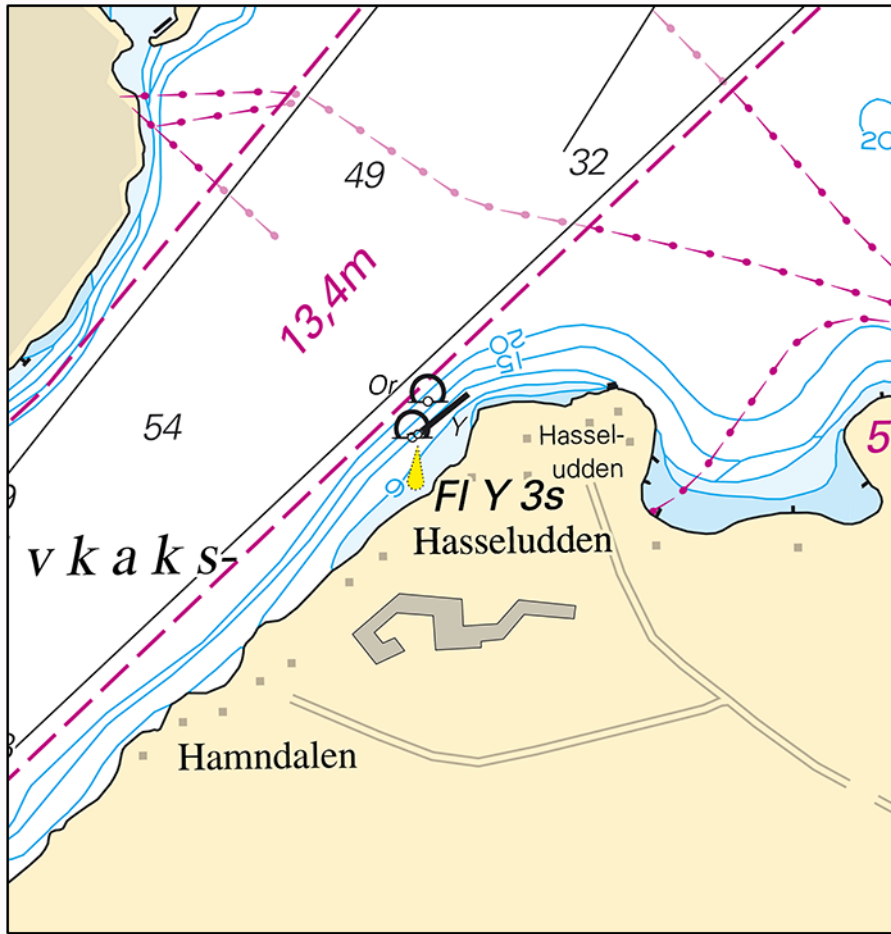
* 13036

Chart: 6142

Sweden. Northern Baltic. Stockholm. Halvkakssundet. Hasseludden. Special light spar buoy.

| | | | |
|--------|----------------------------------|------------|-------------|
| Insert | special light spar buoy, FI Y 3s | 59-20,887N | 018-14,385E |
|--------|----------------------------------|------------|-------------|

Bsp Stockholm M 2018/s11



Hasseludden

Fagerhyltan AB. Publ. 21 juni 2018

* 13149

Chart: 6171, 6172

Sweden. Northern Baltic. Torö. Ankarudden. Light 'Västra Kvarnhällan'. Sectors.

Expired notices: 2017:663/12317(T)

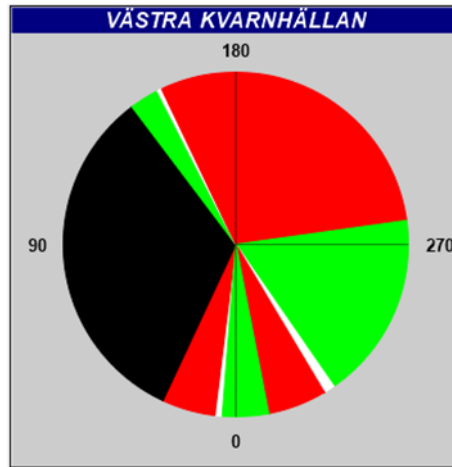
The sectors of light 'Västra Kvarnhällan' have been adjusted.
Note that bearings are specified from the sea to the lighthouse.

| | | |
|----------------------------|-----------|------------|
| Light "Västra Kvarnhällan" | 58-47,60N | 017-50,46E |
|----------------------------|-----------|------------|

| Sector | Color | Range |
|-----------------|-------|-------|
| 4,5° - 7,0° | W | 5,4 M |
| 7,0° - 25,0° | R | 3,6 M |
| 25,0° - 143,0° | Dk | 0 M |
| 143,0° - 153,0° | G | 2,8 M |
| 153,0° - 154,5° | W | 5,4 M |
| 154,5° - 262,0° | R | 3,6 M |
| 262,0° - 325,4° | G | 2,8 M |
| 325,4° - 329,1° | W | 5,4 M |
| 329,1° - 349,0° | R | 3,6 M |
| 349,0° - 4,5° | G | 2,8 M |

Adm. LoL. C6587.2

Bsp Mälaren - Hjälmaran 2016/s39, Bsp Stockholm S 2018/s24, s29, s33



Sectors on light 'Västra Kvarnhällan'

Sjöfartsverket, Norrköping. Publ. 21 juni 2018

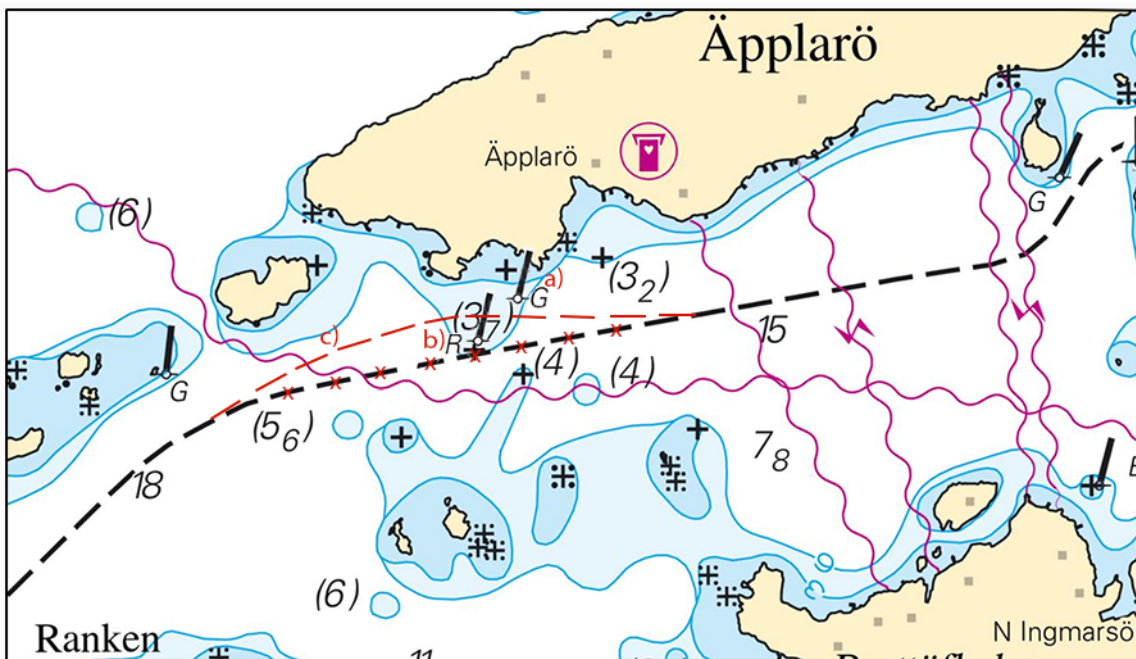
* 13179

Chart: 612

Sweden. Northern Baltic. Stockholm. S of Äpplarö. N of Ingmarsö. Spar buoys. Fairway.

| | | | | |
|---------------|-------------------------------|----|------------|-------------|
| Insert | starboard-hand spar buoy | a) | 59-28,992N | 018-43,272E |
| Move | port-hand spar buoy to | b) | 59-28,929N | 018-43,171E |
| Move | fairway according to chartlet | c) | 59-28,964N | 018-43,190E |

Bsp Stockholm N 2018/s29, s39



'Äpplarö'

Sjöfartsverket. Publ. 21 juni 2018

* 13191

Chart: 6173

Sweden. Northern Baltic. Studsvik. Spar buoy withdrawn.

| | | | |
|---------------|-------------------|------------|-------------|
| Delete | special spar buoy | 58-46,094N | 017-23,586E |
|---------------|-------------------|------------|-------------|

Bsp Ostkusten 2015/s14

* 13196 (T)

Chart: 6181, 925

Sweden. Northern Baltic, Kattegat. Kungsbacka. Södertälje. Kungbackafjorden and Himmerfjärden. Ultra Tri Sweden.

Time: July 20, 0800 - 1200 LT

Stage 1 of the race Ultra Tri Sweden starts at the lighthouse 'Nidingen'. The contestants swim east of island 'Malö', towards 'Röde holme' on the mainland.

Time: July 22, 0800 - 1030 LT

Stage 3. Contestants swim across 'Himmerfjärden'.

All contestants have a buoy attached to their wetsuit and are escorted by kayaks and safety boats.

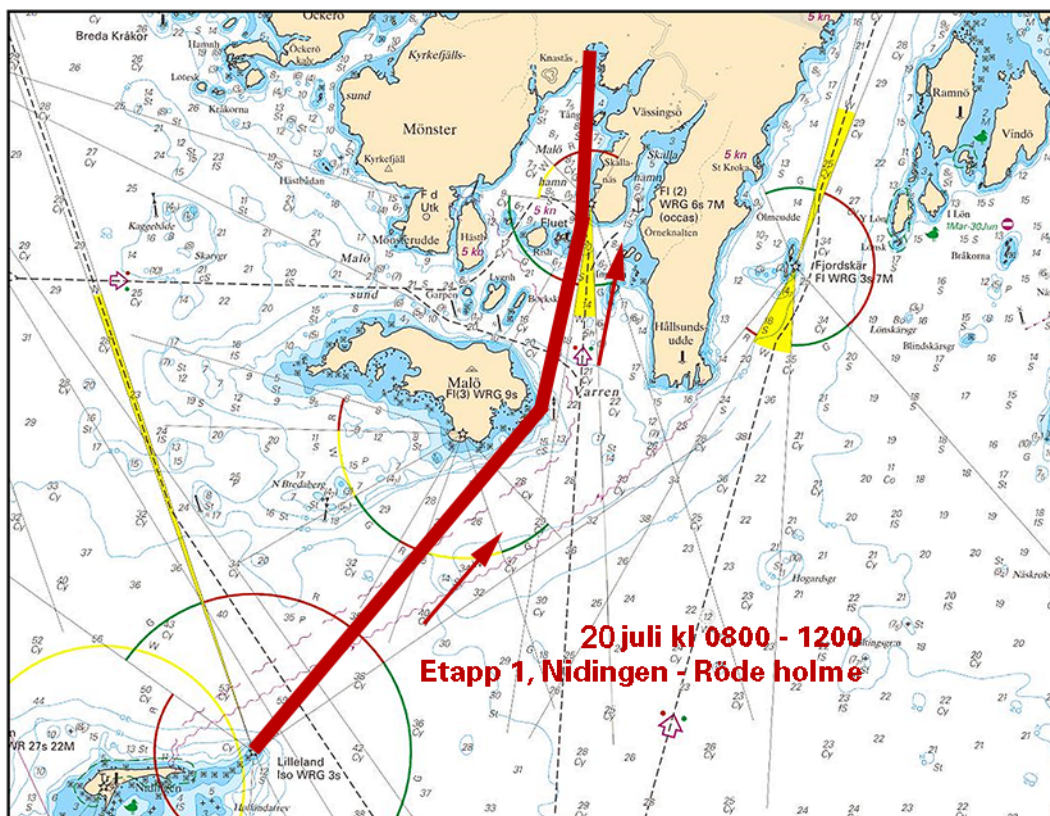
Contact: +46 761 140984 or VHF Ch 14.

| | | | | |
|---------------------------|----|------------|-------------|----------------|
| Phase 1 between a) and c) | a) | 57-18,367N | 011-55,587E | Nidingen |
| | b) | 57-20,255N | 011-58,799E | E of Malö |
| | c) | 57-22,340N | 011-59,057E | Röde holme |
| Phase 3 between a) and b) | a) | 58-59,15N | 017-42,43E | Tunanäs |
| | b) | 58-59,44N | 017-45,59E | Rangsta brygga |

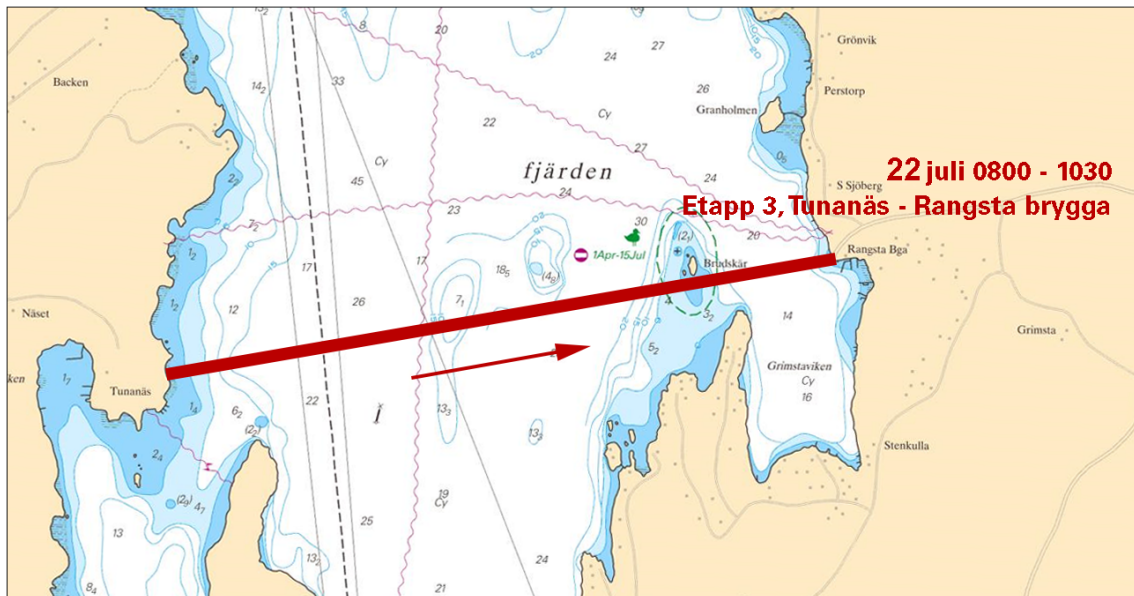
Not shown in ENC.

www.ultratri.se

Bsp Mälaren - Hjälaren 2016/s35, Bsp Västkusten S 2016/s21, s22



Swimming contest, Stage 1



Swimming contest, Stage 3

UltraTri Sweden/Svalhögens IF Publ. 20 juni 2018

Central Baltic

* 12913

Chart: 62, 624

Sweden. Central Baltic. S of Västervik. Flivik approach. Amendments to buoyage and recommended track.

| | | | | |
|----------------|---------------------------------------|----|-----------|------------|
| Replace | spar buoy with port-hand buoy FI R 2s | a) | 57-30,63N | 016-46,95E |
|----------------|---------------------------------------|----|-----------|------------|

Mid-channel mark with fairway moved approx. 280 meters northward.

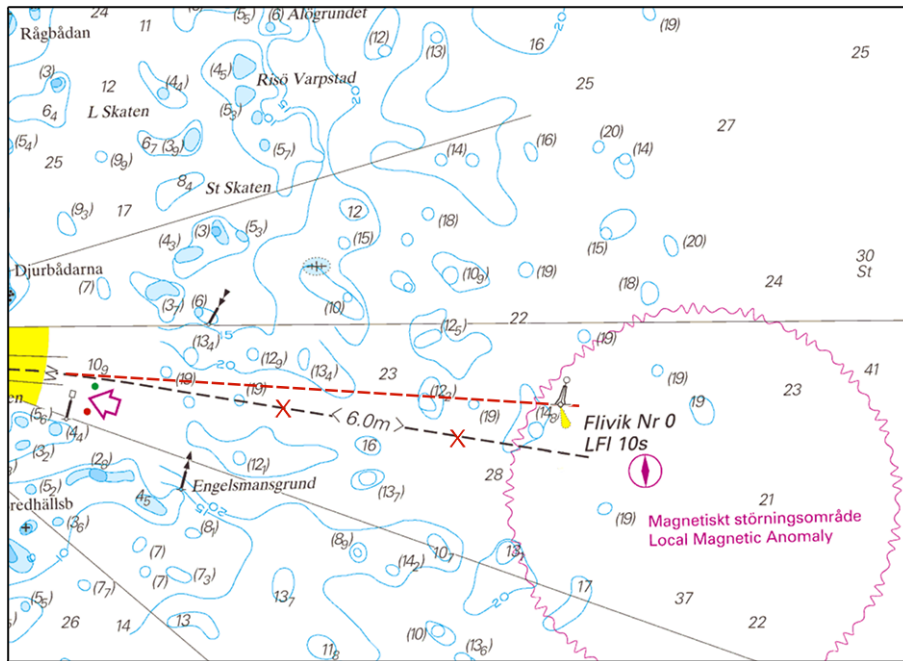
| | | | | |
|-------------|-------------------------------|----|-----------|------------|
| Move | Flivik Nr 0 to | b) | 57-30,50N | 016-50,85E |
| Move | fairway according to chartlet | c) | 57-30,50N | 016-51,00E |

Change of light character on the following buoys and sector light.

| | | | | |
|--------------|---|----|------------|-------------|
| Amend | to FI R 2s on the buoy in position | d) | 57-30,675N | 016-46,405E |
| Amend | to FI G 2s on the buoy in position | e) | 57-30,754N | 016-45,811E |
| Amend | to FI G 2s on the buoy in position | f) | 57-30,748N | 016-46,637E |
| Amend | to FI WRG 2s on the sector light Vinökråkan in position | g) | 57-30,803N | 016-44,105E |

Adm LoL C7131

Bsp Kalmarsund 2014/s10, s12, s13



Flivik

Sjöfartsverket, Norrköping. Publ. 21 juni 2018

* 12932 (T)

Chart: 623

Sweden. Central Baltic. Västervik. Loftahammar. Djupsundet. Closed area. Running event.

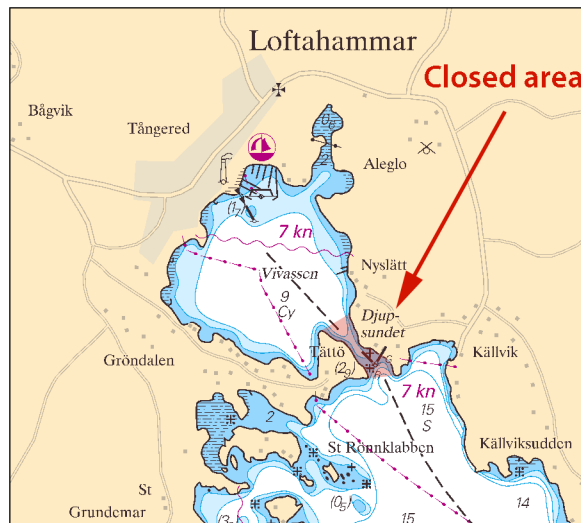
Time: July 14, 1030 - 1230 LT, 2018

Djupsundet is closed for all vessel traffic due to the running event around Vivassen.

| | | |
|------------|-----------|------------|
| Djupsundet | 57-53,54N | 016-42,47E |
|------------|-----------|------------|

Not shown in ENC.

Bsp Ostkusten 2015/s48, s49, s50, s51



Closed area

Insamlingsstiftelsen för barn och ungdomar i Loftahammars skola. Publ. 21 juni 2018

* 13173

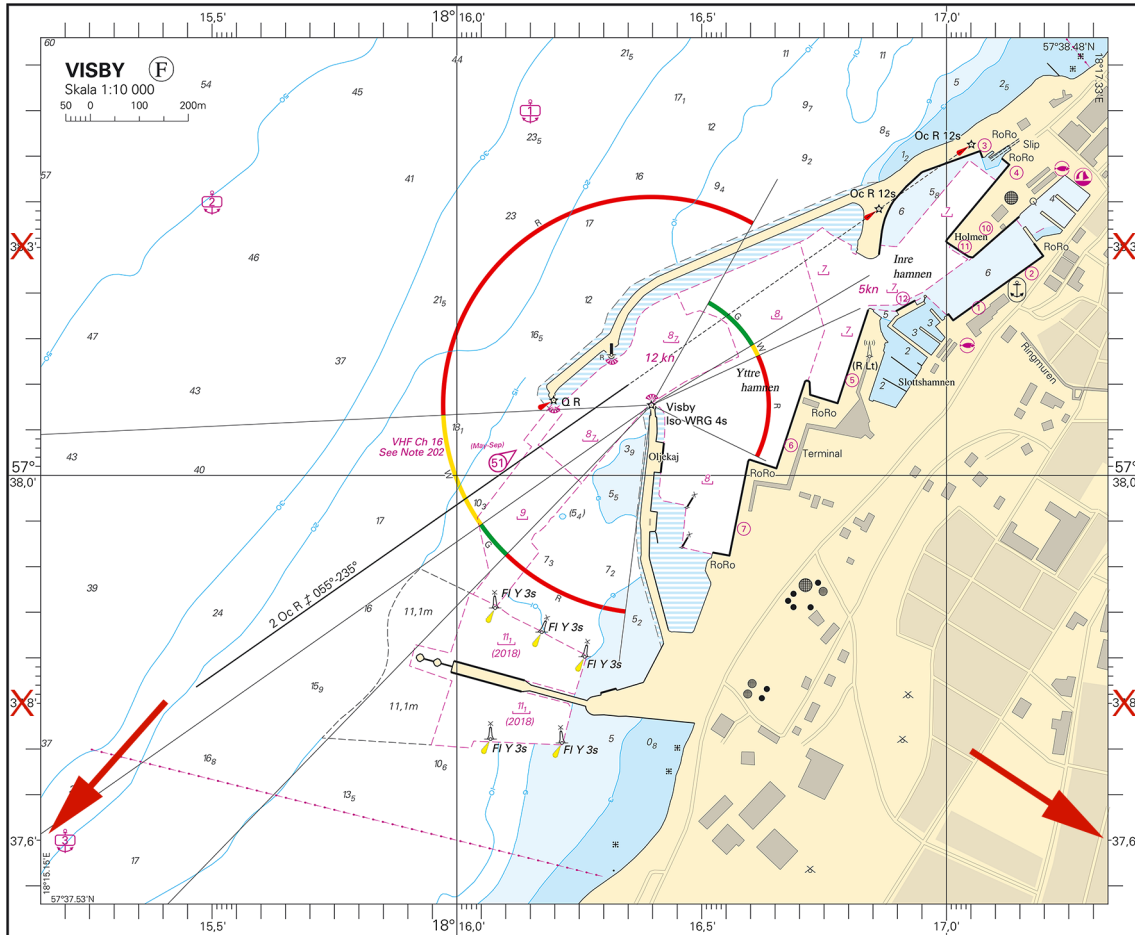
Chart: 731

Sweden. Central Baltic. Chart 731. Error in geographical coordinates in plan over Visby harbour.

The graduation in the frame of the plan over Visby harbour is incorrect in the latest print of chart 731.

| | | |
|---------------|----------------------|-----------|
| Insert | 37,6'. See chartlet. | 57-37,60N |
| Delete | 37,8'. See chartlet. | 57-37,75N |
| Delete | 38,3'. See chartlet. | 57-37,25N |

The affected printing of the chart is marked in the bottom left corner marked as follows:
 Edition No: 11 NEW EDITION
 Corrected up to: 19 Apr 2018



Plan F, Visby. Chart 731

Sjöfartsverket, Norrköping. Publ. 21 juni 2018

Southern Baltic

* 13066

Chart: 743, 839

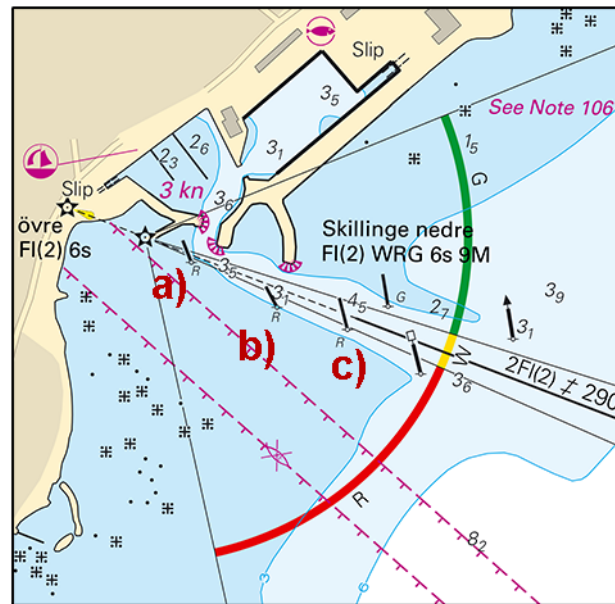
Sweden. Southern Baltic. Skillinge. Buoyage.

Expired notices: 2017:681/12728(T)

See: 2016:618/11558

| | | | | |
|-------------|---|----|------------|-------------|
| Move | port hand spar buoy approximately 14 m SW to position | a) | 55-28,403N | 014-17,083E |
| Move | port hand spar buoy approximately 20 m S to position | b) | 55-28,377N | 014-17,171E |
| Move | port hand spar buoy approximately 10 m N to position | c) | 55-28,365N | 014-17,242E |

Bsp Hanöbukten 2014/s53, Bsp Hanöbukten 2018/s53, Bsp Sydkusten 2012/s53



Skillinge

Simrishamn kommun. Publ. 21 juni 2018

* 13108

Chart: 921

Sweden. Southern Baltic. W of Trelleborg. Stavstensudden. Buoyage.

Expired notices: 2018:690/12844(P)

| | | | |
|--------|---------------------------------------|------------|-------------|
| Insert | south cardinal spar buoy with topmark | 55-21,697N | 013-04,005E |
|--------|---------------------------------------|------------|-------------|

Bsp Sydkusten 2012/s25

Sjöfartsverket, Norrköping. Publ. 21 juni 2018

* 13134

Chart: 71, 74, 741, 7411, 83

Sweden. Southern Baltic. Karlskrona approach. Buoyage.

| | | | | |
|--------|---|----|------------|-------------|
| Insert | starboard-hand light buoy FI G 2s | a) | 56-03,623N | 015-34,397E |
| Move | starboard-hand light buoy Nr 3 by 'Sundsbåden' to | b) | 56-04,911N | 015-34,335E |

Bsp Hanöbukten 2014/s05, s06, s16, s38, Bsp Hanöbukten 2018/s05, s06, s16, s38

Sjöfartsverket. Publ. 21 juni 2018

* 13165 (T)

Chart: 742, 7421

Sweden. Southern Baltic. Port of Karlshamn. Swimrun-race July 21, 2018.

Time: July 21, during the entire day. Starting is at 1000 LT.

Race course between Eriksberg - Kohagen - Högholm - Skiftesön/Skiftesholmen - Västra Udden via Bruksviken - V Horsö - Furö - Ö Bokö - V Bokö - Vettekulla - Fläskö - Kollvik - Yttervägga - Karlshamn - Kastellet - Karlshamn

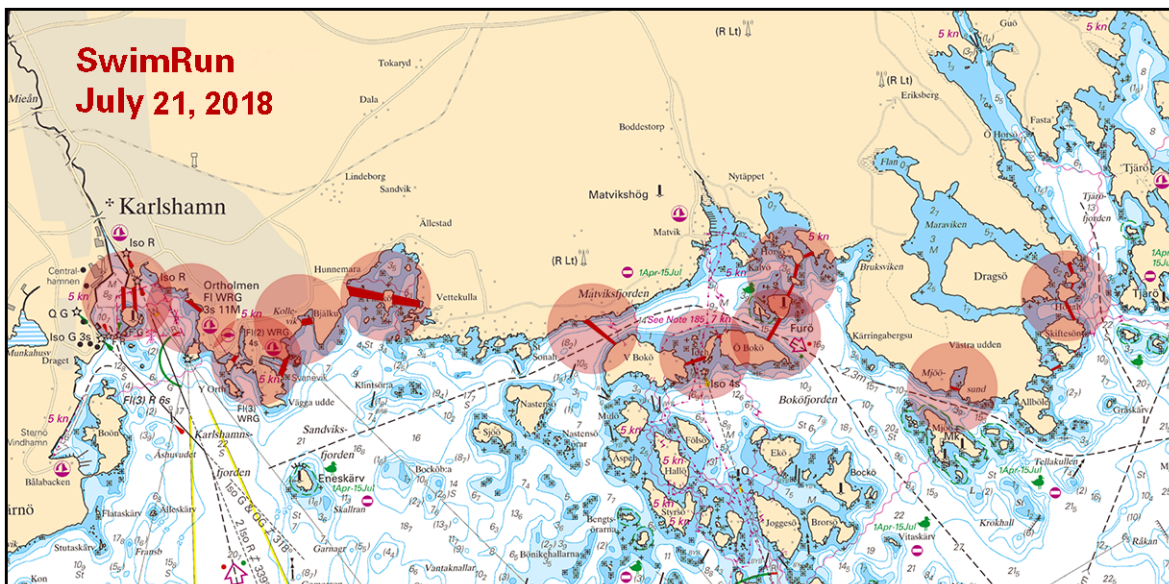
Refer to chartlet.

Mariners are advised to proceed with slow speed maintaining a sharp lookout in areas where swimmers are present.

| | | | | |
|-----------|----|------------|-------------|---------------|
| Eriksberg | a) | 56-10,642N | 015-00,283E | starting line |
| Karlshamn | b) | 56-09,787N | 014-51,901E | finish line |

Not shown in ENC.

Bsp Hanöbukten 2014/s20, s21, s47, Bsp Hanöbukten 2018/s20, s21, s47



Swimrun Karlshamn

M&M Training and Event Consulting. Publ. 20 juni 2018

The Sound

* 13150 (T)

Chart: 8141, 921, 9211

Sweden. The Sound. Malmö. Limhamn. Centralhamnen. Kayak competition June 30 - July 1, 2018.

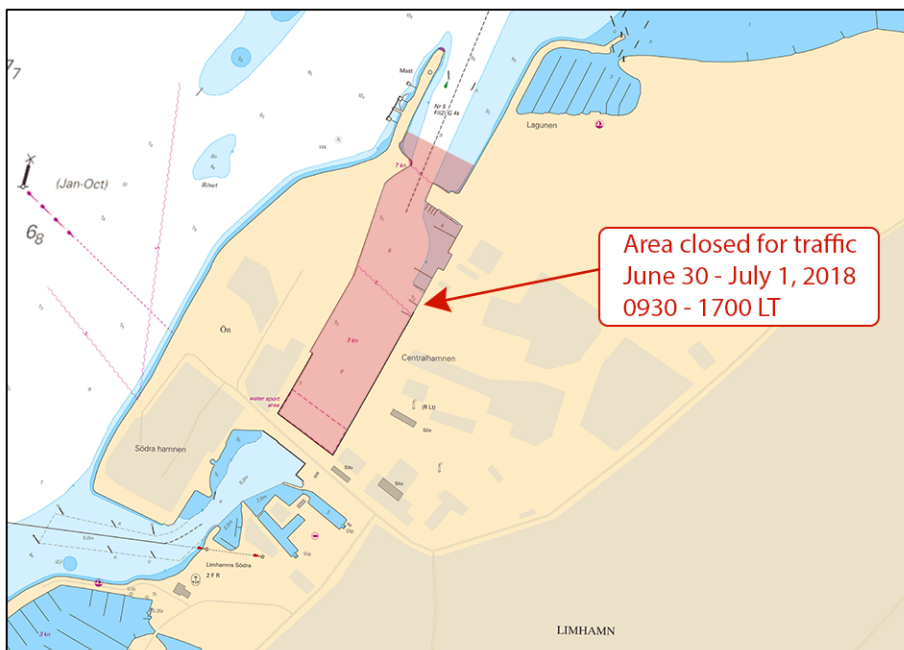
Time: June 30 - July 1 2018, 0930 - 1700 LT.

In connection with a kayak competition in 'Centralhamnen' in Limhamn is the area marked in chartlet closed for traffic. The restrictions do not apply to participants in the race, competition officials and others that have approval from the competition board to drop anchor in, enter or pass through the area.

| | | |
|----------------------------|-----------|------------|
| Centre of competition area | 55-35,50N | 012-55,65E |
|----------------------------|-----------|------------|

Not shown in ENC.

Bsp Sydkusten 2012/s17, s21, s38, s42, s47



Canoe competition

Länsstyrelsen Skåne. Publ. 21 juni 2018

Kattegat

* 13113

Chart: 9313

Sweden. Kattegat. Göteborg. SE of Asperö. Underwater rock.

| | | | |
|--------|-----------------|------------|-------------|
| Insert | underwater rock | 57-38,395N | 011-48,197E |
|--------|-----------------|------------|-------------|

Bsp Västkusten S 2016/s46, s50

Sjöfartsverket. Publ. 21 juni 2018

Skagerrak

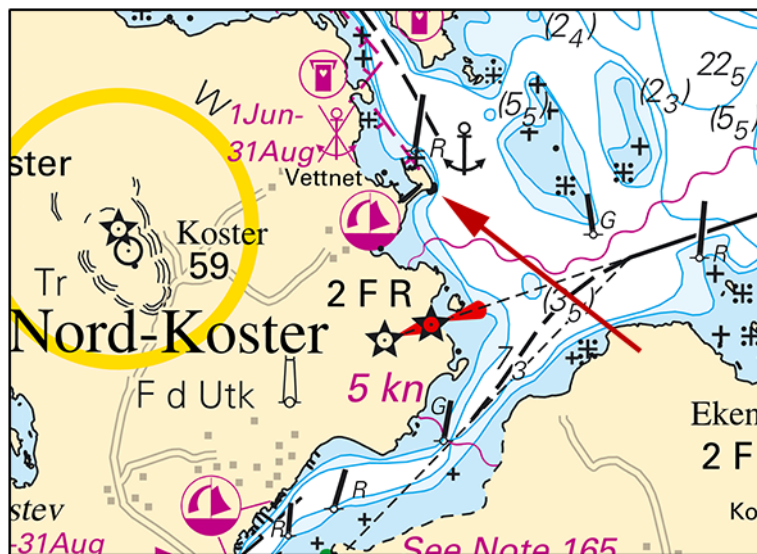
* 12996

Chart: 937

Sweden. Skagerrak. Nord-Koster. Vettnet. New quay.

| | | | |
|--------|----------------------------|------------|-------------|
| Insert | quay according to chartlet | 58-54,217N | 011-01,295E |
|--------|----------------------------|------------|-------------|

Bsp Västkusten N 2016/s08



New quay on Nord-Koster

Nordkosters Fiskehamnsförening. Publ. 21 juni 2018

Lake Vänern and Trollhätte kanal

* 12966 (T)

Chart: 131, 132

Sweden. Lake Vänern and Trollhätte kanal. Skoghall. Hammarön. Mörudden. Area closed July 27 - 29, 2018.

The area marked in the chartlet will be closed during stated time due to jetski races.

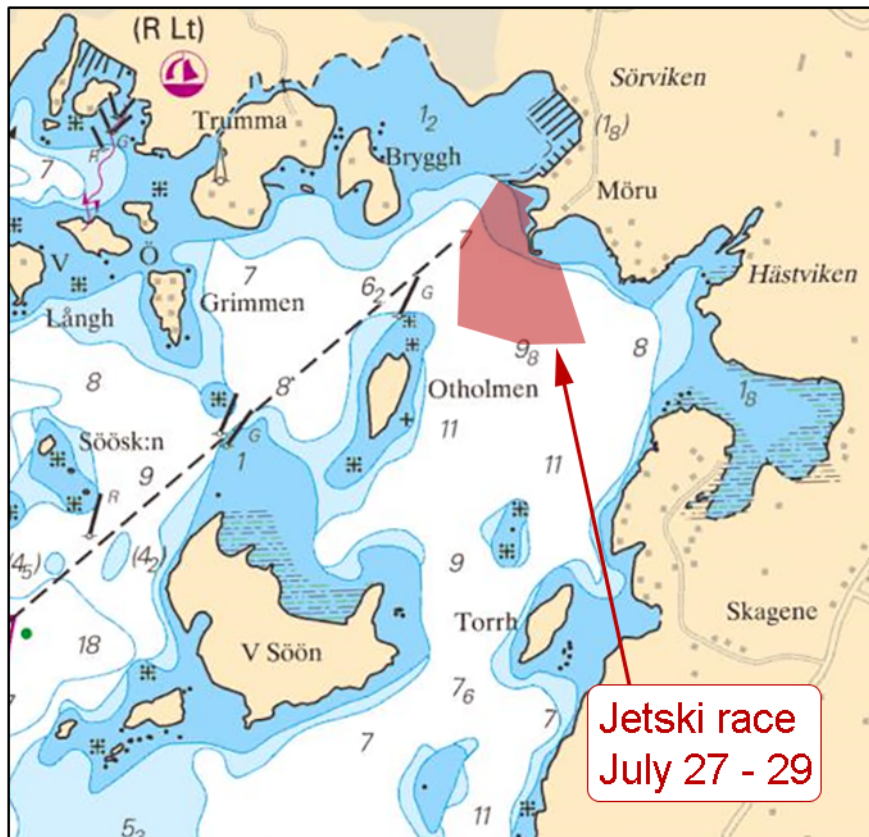
Passage to and from the marina 'Mörudden' will be made possible when circumstances admit it.

| | | |
|-------------|-----------|------------|
| Closed area | 59-18,61N | 013-29,49E |
|-------------|-----------|------------|

| Date | Time |
|---------|----------------|
| July 27 | 1300 - 1500 LT |
| July 28 | 1000 - 1700 LT |
| July 29 | 0800 - 1800 LT |

Not shown in ENC.

Bsp Vänern 2014/s12, Bsp Vänern 2018/s12



Closed area

Länsstyrelsen Värmland. Publ. 21 juni 2018