

Notices to Mariners, SWEDEN Swedish Maritime Administration



Areas in Swedish Notices to Mariners



SJÖFARTSVERKET

Editorial office
Swedish Maritime Administration
Ufs
601 78 NORRKÖPING
Sweden
tel: 0771 630 605
e-mail: ufs@sjofartsverket.se
Publisher:
Hydrographer Patrik Wiberg

ANNOUNCEMENTS

No Announcements in this booklet.

NOTICES

The Quark

* 13084

Chart: 42, 429, 512

Sweden. The Quark. TSS and two-way routes "In Norra Kvarken" operational from 17 May 0000 UTC.

Expired notices: 2018:687/12806(T)

Time: From May 17, 2018 at 0000 UTC.

The TSS and two-way routes "In Norra Kvarken" are operational again.

Southern entrance	a)	63-25,3N	020-34,8E
Northern entrance	b)	63-35,1N	021-03,7E

Bsp Bottenhavet N 2013/s34, s35

Transportstyrelsen, Norrköping. Publ. 17 maj 2018

Northern Baltic

* 13069 (T)

Chart: 6141, 6142

Sweden. Northern Baltic. Port of Stockholm. Lilla Värtan. Lidingö. Sailing event Lidingö Runt 2018.

Time: May 26, 2018.

The sailing race 'Lidingö Runt' is ongoing throughout the day. 200 contestants are expected to participate.

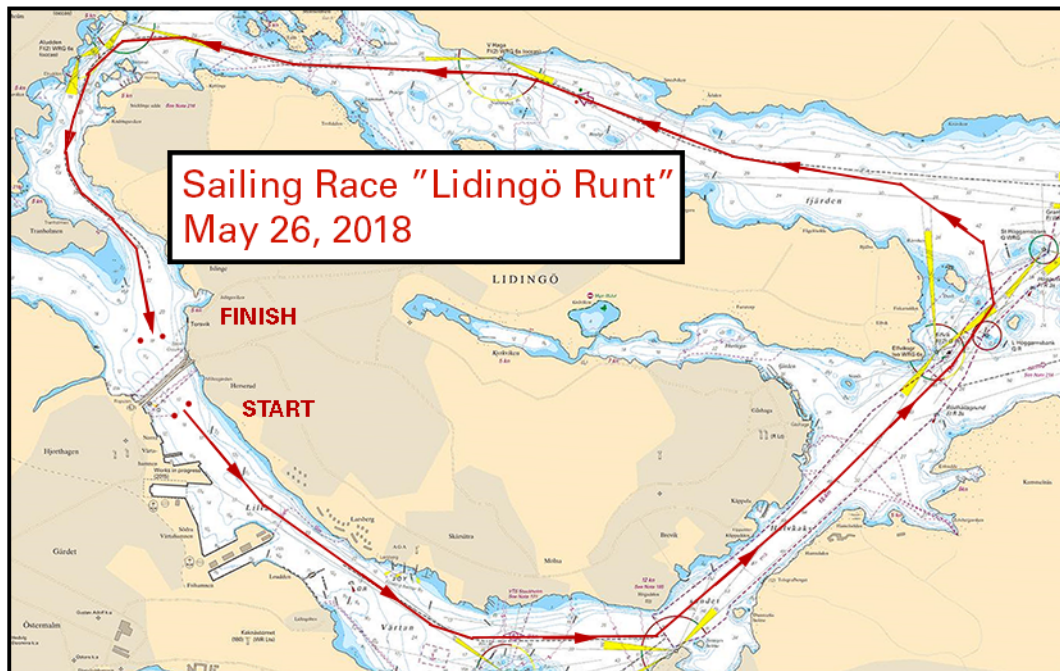
Refer to chartlet for an overview of the sailing route.

The first start is at 1000 LT. All participants are expected to have reached the finish line by 1800 LT.

Lidingö	59-22,0N	018-10,0E
---------	----------	-----------

Not shown in ENC.

Bsp Mälaren - Hjälmaran 2016/s53, Bsp Stockholm M 2018/s07, s08, s09, s10, s11, s12, s13, s14, s20, s46



Race course, Lidingö Runt 2018

Lidingö Runt. Publ. 15 maj 2018

Central Baltic

* 13078

Chart: 731

Sweden. Central Baltic. Chart 731. Error in geographical coordinates in plan over Slite harbour.

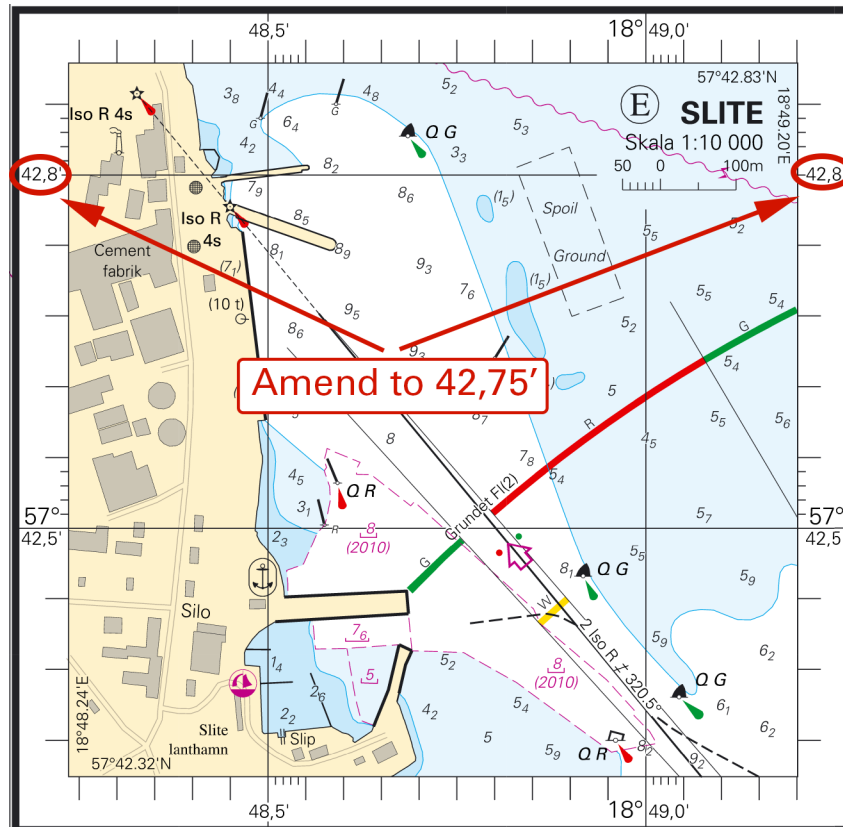
One of the geographical coordinates in the frame of the plan over Slite harbour is incorrect in the latest print of chart 731.

Amend	42,8' till 42,75'. See chartlet.	57-42,75N	018-48,75E
--------------	----------------------------------	-----------	------------

The affected printing of the chart is marked in the bottom left corner marked as follows:

Edition No: 11 NEW EDITION

Corrected up to: 19 Apr 2018



Plan, Slite harbour

Sjöfartsverket, Norrköping. Publ. 17 maj 2018

Kattegat

* 13072 (T)

Chart: 924

Sweden. Kattegat. Falkenberg. Quay 'Glasfiberkajen'. Temporary working platform.

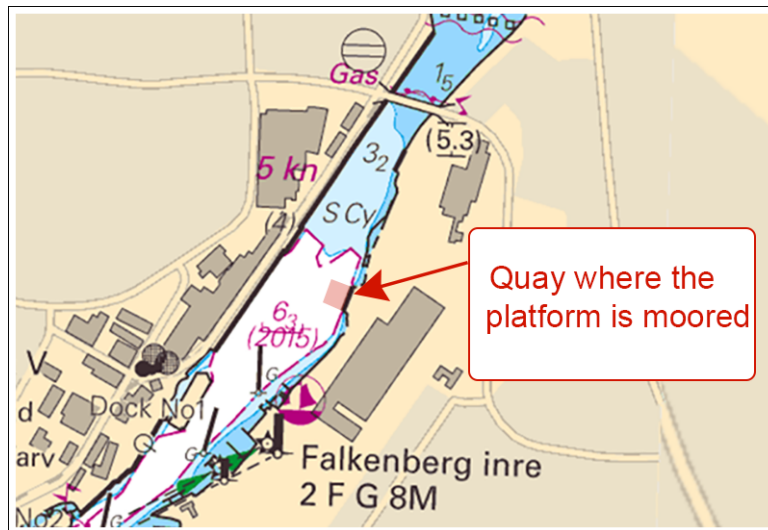
Time: Until mid-June 2018.

During a period of approx. four weeks a working platform will be moored by the quay 'Glasfiberkajen' due to demolition. The platform will affect the inner turning circle.

Quay 'Glasfiberkajen'	56-53,718N	012-29,636E
-----------------------	------------	-------------

Not shown in ENC.

Bsp Västskusten S 2016/s27, s66



Quay 'Glasfiberkajen'

Falkenbergs kommun. Publ. 17 maj 2018

* 13076

Chart: 1352, 931, 9312

Sweden. Kattegat. Göteborg. Bridge 'Götaälbron'. Opening times.

The bridge 'Götaälbron' have restricted opening times during summer.

Note: Occasionally the winter opening times will be used during summer. This will only occur at certain temperatures.

Opening times May - August	
Weekdays (Local time)	0000 - 0600; 0900 - 1200
Weekends and holidays (Local time)	0000 - 1200

Opening times September - April	
Weekdays (Local time)	0000 - 0600; 0900 - 1500; 1800 - 2400
Weekends and holidays	0000 - 2400

Bridge 'Götaälbron'	57-42,87N	011-58,02E
---------------------	-----------	------------

Bsp Göta kanal 2011/s59, Bsp Västkusten S 2016/s59

Trafikkontoret, Göteborgs stad. Publ. 17 maj 2018

Lake Vänern and Trollhätte kanal

* 13052

Chart: 13, 133, 1331

Sweden. Lake Vänern and Trollhätte kanal. Vänern. N of Lurö Röskär. Spar buoy changed to light buoy.

Replace	isolated danger spar buoy with port-hand light buoy	58-47,892N	013-15,896E
----------------	---	------------	-------------

Bsp Göta kanal 2011/s26, s37, Bsp Vänern 2014/s06, s09, s28, s41, Bsp Vänern 2018/s06, s09, s28, s41

Sjöfartsverket. Publ. 17 maj 2018

* 13060

Chart: 132

Sweden. Lake Vänern and Trollhätte kanal. Vänern. Vålösundet. Spar buoys moved. Light on buoys.

Move	spar buoy in position N59°17,235' E014°02,970' to	59-17,199N	014-02,976E
Move	spar buoy in position N59°17,235' E014°03,023' to	59-17,199N	014-03,015E
Insert	light with character Q R on port-hand buoy in position	59-15,263N	014-02,322E
Insert	light with character Q G on starboard-hand buoy in position	59-15,243N	014-02,380E

Bsp Vänern 2014/s14, s15, s47, Bsp Vänern 2018/s14, s15, s47

Sjöfartsverket. Publ. 17 maj 2018

* 13064

Chart: 13, 135

Sweden. Lake Vänern and Trollhätte kanal. Lake Vänern. Dalbosjön. E of Mellerud. Light buoy
'Toppgrund' replaced by light spar buoy.

Replace	light buoy with light spar buoy	58-42,604N	012-36,591E	light character unchanged
----------------	---------------------------------	------------	-------------	---------------------------

Bsp Göta kanal 2011/s31, Bsp Vänern 2014/s25, Bsp Vänern 2018/s25

Sjöfartsverket, Norrköping. Publ. 17 maj 2018