

Notices to Mariners, SWEDEN Swedish Maritime Administration



Areas in Swedish Notices to Mariners



SJÖFARTSVERKET

Editorial office
Swedish Maritime Administration
Ufs
601 78 NORRKÖPING
Sweden
tel: 0771 630 605
e-mail: ufs@sjofartsverket.se
Publisher:
Hydrographer Patrik Wiberg

ANNOUNCEMENTS

12918

GMDSS. Inmarsat. Transition of services from the I-3 to I-4 satellite constellation.

Time: From April 30, 2018, according to the table below.

The transition of services from the I-3 fleet onto our I-4 constellation will continue throughout 2018 according to the table below. Due to the move from the I-3 to the I-4 satellites, the coverage areas will change and users will need to ensure that their devices are pointed to the relevant satellite. Each migration step will cause a short outage while services are moved onto the I-4 satellites.

For further information, see <https://www.inmarsat.com/support/i-3-to-i-4-services-migration/>.

Atlantic Ocean Region West (AORW) I-3 to Americas (AMER) I-4	Fleet 77	April 30, 2018, 1730 UTC.
	Inmarsat C	May 9, 2018, 1400 UTC.
Pacific Ocean Region (POR) I-3 to Asia/Pacific (APAC) I-4		End of Q2 2018*.
Atlantic Ocean Region East (AORE) I-3 F2 moved to I-3 F5		End of Q3 2018*.
Indian Ocean Region (IOR) I-3 to Alphasat EMEA I-4		End of Q4 2018*.
		* final date for transfer will be announced approx. six weeks before.

Ufs A 11.1

IMO/IHO/WMO/Inmarsat Publ. 19 april 2018

* 13012

Chart: 932, 937

New print of charts. New edition of chart 932 and 937.

A new print of the following nautical charts are available from April 2018:

Chart	Edition
932	12.0 NEW EDITION
937	5.0 NEW EDITION

A NEW EDITION is a print of an existing chart, containing changes significant to navigation which are not possible to fully describe in the Swedish NTM.

Sjöfartsverket, Norrköping. Publ. 19 april 2018

NOTICES

Northern Baltic

* 12986 (T)

Chart: 616, 6162, 6163

Sweden. Northern Baltic. E of Utö. Gunnery exercises. May 1 - 10, 2018.

Gunnery exercises will be carried out within Utö firing range during stated times. The current extension of the closed area is given in the table.

Information during practice times VHF channel 16, call Utö skjutfält, or phone +46 8 501 570 45. Information about upcoming practice times, phone: +46 10 823 18 23, Muskö Sjöcentral.

Day	Time	Range from shore
may 1 - 2	0900 - 2400 LT	1,7 M
May 3 - 4	0900 - 2400 LT	1,8 M
may 5	0900 - 2400 LT	1,7 M
May 6	0000 - 0200 , 0900 - 2400 LT	1,7 M
may 7	0000 - 0200 LT	1,7 M
May 8 - 10	1000 - 2200 LT	3.8 M

Position: Approx.	58-54N	018-20E	Utö Firing Danger Area
-------------------	--------	---------	------------------------

Not shown in ENC.

Bsp Stockholm S 2016/s17, s18, s19, s37, Bsp Stockholm S 2018/s17, s18, s19, s37

Försvarsmakten, Utö. Publ. 19 april 2018

* 13007 (T)

Chart: 6141

Sweden. Northern Baltic. Stockholm. Värtahamnen. Värtabassängen. Diving operations.

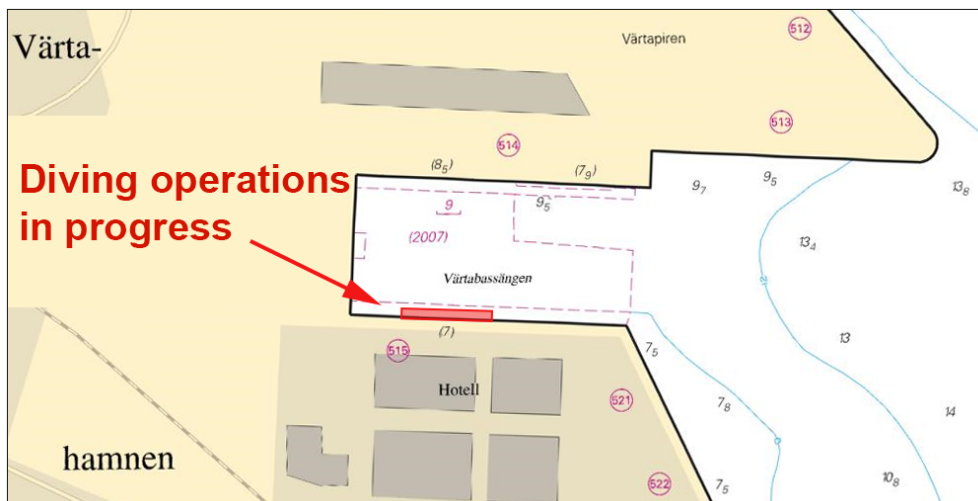
Time: End of April

Repair works that includes diving in progress at the inner part of berth 515.

Berth 515	59-20,97N	018-06,70E
-----------	-----------	------------

Not shown in ENC.

Bsp Stockholm M 2016/s09, Bsp Stockholm M 2018/s09



Diving operations April 2018

Stockholms Hamnar AB. Publ. 19 april 2018

* 13013

Chart: 6141, 6142

Sweden. Northern Baltic. Port of Stockholm. Frihamnen kaj 3. Reinforcement works completed.

Expired notices: 2017:670/12461(T)

The reinforcement works in Frihamnen in Stockholm, along Kaj 3 (berth 636 - 638) are now completed.

Kaj 3, Frihamnen, Stockholm	59-20,63N	018-07,54E
-----------------------------	-----------	------------

Bsp Mälaren - Hjälmaren 2016/s53, Bsp Stockholm M 2016/s07, s09, s10, Bsp Stockholm M 2018/s07, s09, s10

Stockholms hamnar. Publ. 19 april 2018

Southern Baltic

* 13008 (T)

Chart: 7, 74, 742, 743, 8, 83

Sweden. Southern Baltic. S of Åhus. Ravlunda. Firing exercises. May 2018.

Position: Ap.	55-46N	014-20E	Firing restriction area R34 RAVLUNDA
---------------	--------	---------	--------------------------------------

Restriction area R34 will be closed for vessels during stated times.

During practice orange quick light, Q Or, is shown from shore.

For further information, call +46 44 35 10 32.

May	Hours LT	Range
2	1200 - 2400 LT	4.4 M
3	0000 - 1200 LT	4.4 M
15 - 17	0900 - 2000 LT	6.8 M
18 - 21	0900 - 1700 LT	6.8 M
22	0900 - 2000 LT	6.8 M
23	0900 - 1700 LT	6.8 M

Not shown in ENC.

Bsp Hanöbukten 2014/s06, s07, s24, s25, s26, s27, s28, s29, s30, s31, s32, s33, Bsp Sydkusten 2012/s06, s07, s29
Södra Skånska Regementet, Södra Sandby. Publ. 19 april 2018

The Sound

* 13005

Chart: 922, 9221

Sweden. The Sound. TSS In the Sound. N of Ven. Helsingborg. Hydrographic survey completed.

Expired notices: 2018:694/12930(T)

Hydrographic survey performed by R/V Jakob Hägg on the Swedish side of the traffic separation in the Sound has been completed.

Hydrographic survey	56-00,10N	012-41,10E
---------------------	-----------	------------

Bsp Sydkusten 2012/s11, s12, s31, s33, s34, s35

Sjöfartsverket, R/V Jacob Hägg. Publ. 19 april 2018

Kattegat

* 13000

Chart: 924

Sweden. Kattegat. Port of Falkenberg. Maximum draught.

Expired notices: 2016:631/11786

Maximum recommended draught is 6.5 m.

Port of Falkenberg	56-53,34N	012-28,76E
--------------------	-----------	------------

Note: Depth information will be published at a later stage.

Bsp Västkusten S 2016/s66

Sjöfartsverket Malmö. Publ. 19 april 2018

* 13002

Chart: 1352, 931, 9312

Sweden. Kattegat, Lake Vänern and Trollhätte kanal. Göteborg. Bridge 'Götaälbron'. Fairway reopened.

Expired notices: 2018:698/12992(T)

The fairway at bridge 'Götaälbron' is opened for all vessel traffic.

The bridge collision protection is restored.

Bridge 'Götaälbron'	57-42,87N	011-58,02E
---------------------	-----------	------------

Bsp Göta kanal 2011/s59, Bsp Västkusten S 2016/s59

Sjöfartsverket. Publ. 18 april 2018

* 13003 (T)

Chart: 92, 923, 924

Sweden. Kattegat. W of Halmstad. Ringenäs. Firing exercise. April 23 - 24.

Position: Approx.	56-40,8N	012-38,6E	Firing restriction area R41 A RINGENÄS
-------------------	----------	-----------	--

Firing will take place at Ringenäs firing range during stated times. The dangerous area extending from shore according to table below. A light on shore, VQ R, will be shown during firing.

Part of restriction area R41A will be closed for vessels during stated times. During practice, light VQ R is shown from shore.

For further information call +46 35 266 39 55, +46 35 536 77.

Day	Time	Range
April 23	0900 - 1600 LT	2.5 M
April 24	0900 - 1600 LT	2.5 M

Not shown in ENC.

Bsp Västkusten S 2016/s29, s30

Försvarsmakten, Lv6. Publ. 19 april 2018

* 13015 (T)

Chart: 9312, 9313

Sweden. Kattegat. Port of Göteborg. Stigbergskajen. Masthuggskajen. Depth.

Time: Until further notice

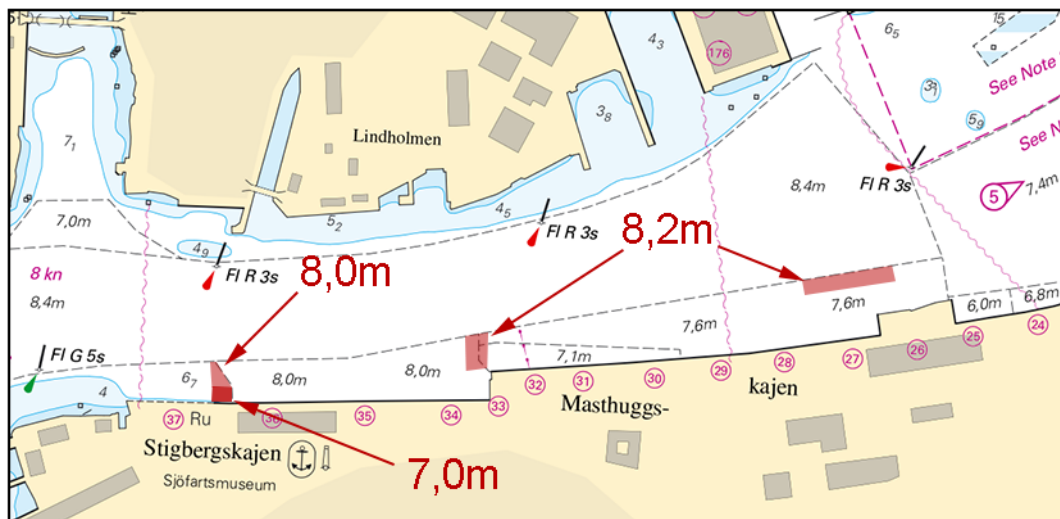
A hydrographic survey in the area around berth 'Stigbergskajen' and 'Masthuggskajen' in Göteborg shows changes in depths in the area. See chartlet for details.

During April and May, dredging and further survey will result in chart updates.

Berth 'Stigbergskajen'	57-42,03N	011-55,81E
Berth 'Masthuggskajen'	57-42,06N	011-56,46E

Not shown in ENC.

Bsp Västkusten S 2016/s58, s59



Hydrographic surveyed area. Berth 'Stigbergskajen' in Göteborg

Göteborgs hamn. Publ. 19 april 2018

Skagerrak

* 12951

Chart: 933

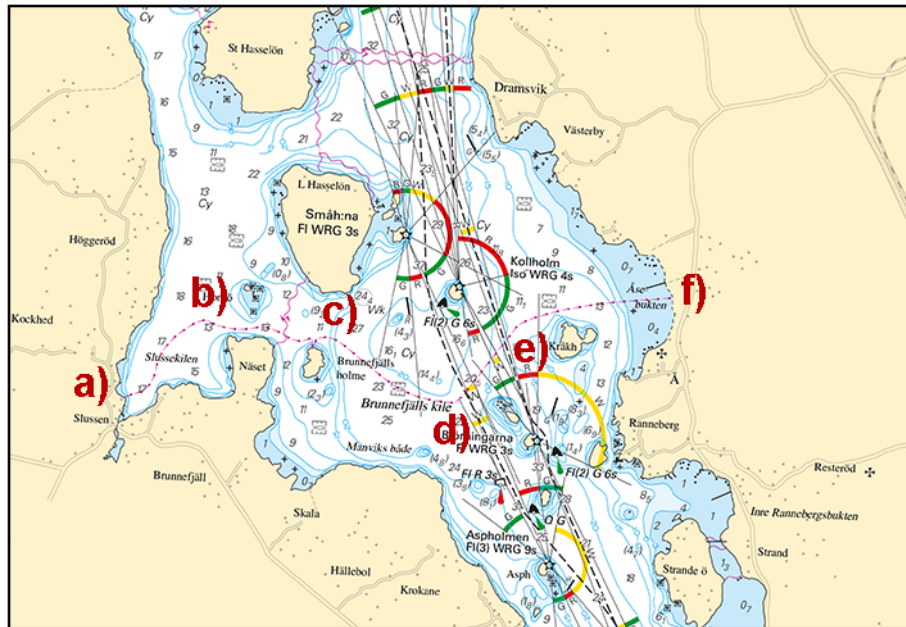
Sweden. Skagerrak. S of Uddevalla. Orust. Slussen - Å. Pipeline.

Expired notices: 2017:669/12455(P)

A water pipeline is established between Slussen on Orust and Åsebukten on the mainland.

Insert	submarine pipeline between a) - f)	a)	58-15,723N	011-45,706E	Shore connection
		b)	58-16,123N	011-46,409E	
		c)	58-16,066N	011-47,599E	
		d)	58-15,773N	011-48,809E	
		e)	58-16,182N	011-49,372E	
		f)	58-16,339N	011-50,781E	Shore connection

Bsp Västkusten N 2016/s21



Submarine water pipeline between Orust and the mainland

Frog Marine Service. Publ. 18 april 2018

Lake Vänern and Trollhätte kanal

* 12999

Chart: 13, 135

Sweden. Lake Vänern and Trollhätte kanal. TSS Gälleudde and TSS Hindens Rev in force.

Expired notices: 2018:696/12968(T)

TSS Gälleudde and TSS Hindens Rev in lake Vänern are in force.

TSS Gälleudde	58-29N	012-30E
TSS Hindens Rev	58-39N	012-45E

Bsp Göta kanal 2011/s31, s34, s35, Bsp Vänern 2014/s04, s08, s25, s34, s35, Bsp Vänern 2018/s04, s08, s25, s34, s35

Sjöfartsverket. Publ. 17 april 2018

* 13006 (T)

Chart: 135, 1353

Sweden. Lake Vänern and Trollhätte kanal. Vänersborgsviken. Bastungsgrunden. Beacon destroyed by ice.

Time: Until further notice

Beacon 'Bastungsgrundet' has been destroyed by the ice.

beacon 'Bastungsgrundet'	58-23,98N	012-19,43E
--------------------------	-----------	------------

Bsp Göta kanal 2011/s35, s62, Bsp Vänern 2014/s35, s50, Bsp Vänern 2018/s35, s50

Sjöfartsverket. Publ. 18 april 2018

* 13010 (T)

Chart: 135, 1353

Sweden. Lake Vänern and Trollhätte kanal. Vänersborgsviken. Bastungsgrunden. Light buoy unlit.

Time: Until further notice.

Porthand light buoy by Bastungsgrunden is unlit.

Porthand light buoy	58-23,97N	012-19,33E
---------------------	-----------	------------

Bsp Göta kanal 2011/s35, s62, Bsp Vänern 2014/s35, s50, Bsp Vänern 2018/s35, s50

Sjöfartsverket. Publ. 18 april 2018