

Notices to Mariners, SWEDEN Swedish Maritime Administration



Areas in Swedish Notices to Mariners



SJÖFARTSVERKET

Editorial office
Swedish Maritime Administration
Ufs
601 78 NORRKÖPING
Sweden
tel: 0771 630 605
e-mail: ufs@sjofartsverket.se
Publisher:
Hydrographer Patrik Wiberg

ANNOUNCEMENTS

No Announcements in this booklet.

NOTICES

Northern Baltic

* 12970 (T)

Chart: 6212

Sweden. Northern Baltic. Port of Norrköping. Dredging operations.

Time: 2018.

Dredging will be in progress until end of 2018, in different parts in Port of Norrköping.

During spring - summer 2018 the operation is taking place around the clock in the area around Blixholmen.

The work is performed by the suction dredger 'P7', assisted by the tugboat ATLE/SFC-6623, length approx. 11 m.

Both vessels are equipped with AIS.

The dredger is moored with several wires to anchors or to shore. Spoil is pumped in plastic pipelines from the dredgers to position b) on the eastern shore of Händelö island. The pipelines, which may be floating close under the water surface, are marked by orange buoys.

At times the pipelines and wires will be hindrance to ships. To make passage of merchant ships possible the pipelines and wires will be lowered to the seabed.

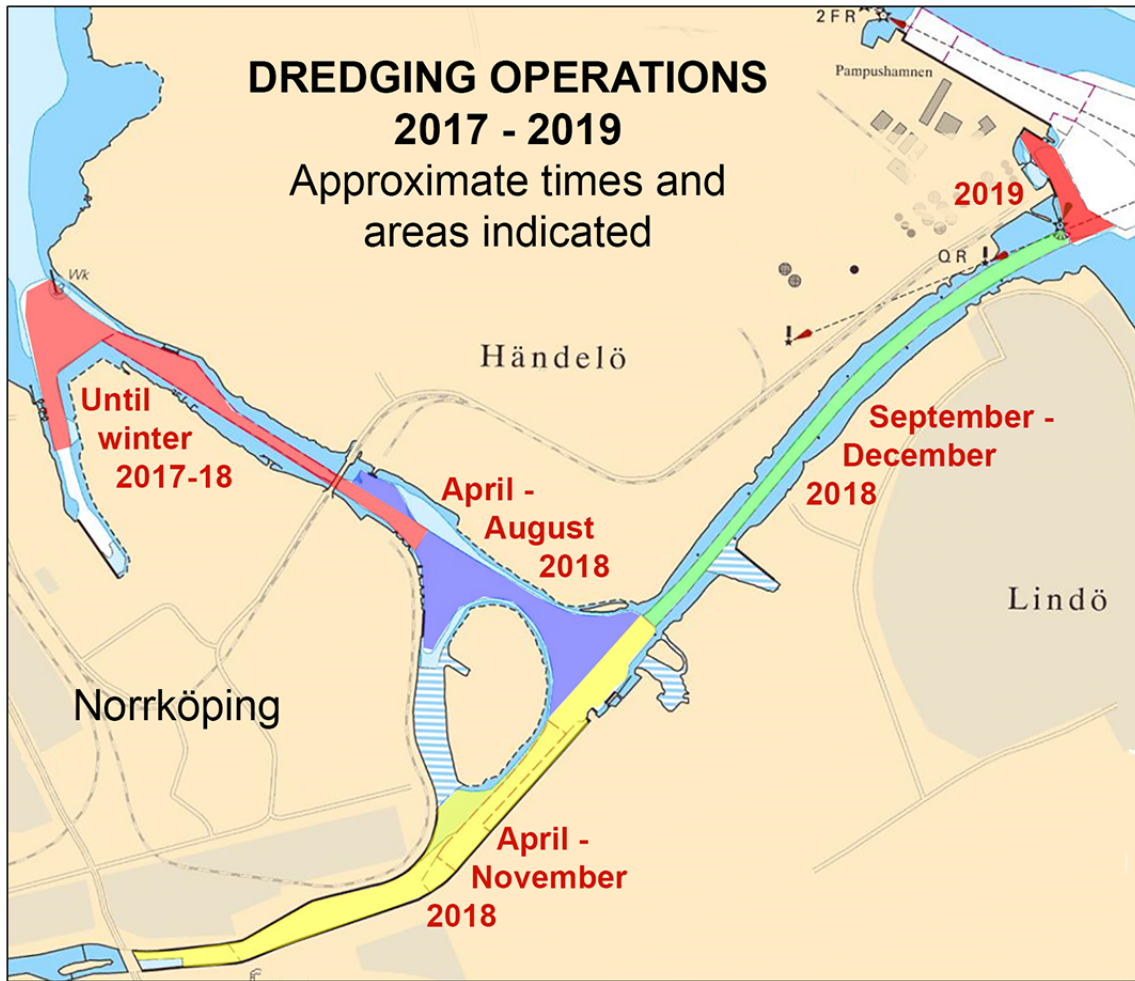
Approximate times for dredging in different areas is indicated in the chartlet.

For further information: Port of Norrköping, tel +46 70 601 08 48. Dredger +46 70 384 08 96 or VHF channel 9 or 16.

Blixholmen	a)	58-36,3N	016-13,1E
Eastern shore of Händelö island	b)	58-36,63N	016-13,93E

Not shown in ENC.

Bsp Ostkusten 2015/s26, s58, s59



Dredging in Norrköping

Norrköpings Hamn AB. Publ. 5 april 2018

*** 12971**

Chart: 61, 613, 6143, 6144, 6145, 615, 619

Finland, Sweden. Northern Baltic. Tyresö - Nämndöfjärden - Kanholmsfjärden - Sandhamn - Utö, Finland. Cable laying postponed.

Expired notices: 2018:696/12946(P)

The previously announced cable laying between Tyresö, Sweden and Utö, Finland, has been postponed. The laying will take place in the autumn of 2018.

a)	59-15,2N	018-16,8E	Tyresö, Erstaviken, Sweden
b)	59-17,3N	018-54,4E	Sandhamn
c)	59-47,1N	021-21,5E	Utö, Finland

Bsp Stockholm M 2016/s24, s25, s26, s27, s28, s29, s30, s31, s32, s33, s34, s35, s36, s37, s47, s48, s52, s53, s54,
 Bsp Stockholm M 2018/s24, s25, s26, s27, s28, s29, s30, s31, s32, s33, s34, s35, s36, s37, s47, s48, s52, s53, s54,
 Bsp Stockholm N 2016/s09, s33, s34, s35, s36, s37, s41, Bsp Stockholm N 2018/s09, s33, s34, s35, s36, s37, s41

Baltic Offshore. Publ. 4 april 2018

*** 12981 (T)**

Chart: 616, 6162, 6163

Sweden. Northern Baltic. E of Utö. Gunnery exercises. April 24 - 28, 2018.

Gunnery exercises will be carried out within Utö firing range during stated times. The current extension of the closed area is given in the table.

Information during practice times VHF channel 16, call Utö skjutfält, or phone +46 8 501 570 45. Information about upcoming practice times, phone: +46 10 823 18 23, Muskö Sjöcentral.

Day	Time	Range from shore
April 24	0900 - 2400 LT	3.8 M
April 25	0000 - 0100 LT	3.8 M
April 25	0900 - 2400 LT	3.8 M
April 26	0000 - 0100 LT	3.8 M
April 26	0900 - 2400 LT	3.8 M
April 27	0000 - 0100 LT	3.8 M
April 27	0900 - 2400 LT	3.8 M
April 28	0000 - 0100 LT	3.8 M
April 28	0900 - 1200 LT	3.8 M

Position: Approx.	58-54N	018-20E	Utö Firing Danger Area
-------------------	--------	---------	------------------------

Not shown in ENC.

Bsp Stockholm S 2016/s17, s18, s19, s37, Bsp Stockholm S 2018/s17, s18, s19, s37

Försvarsmakten, Utö. Publ. 5 april 2018

Lake Mälaren and Södertälje kanal

* 12980 (T)

Chart: 6141, 6142

Sweden. Lake Mälaren and Södertälje kanal. Stockholm. Riddarfjärden. Söder Mälarstrand. Geotechnical surveys. April 2018.

Expired notices: 2018:692/12898(T)

Time: April 9 - 22, 2018

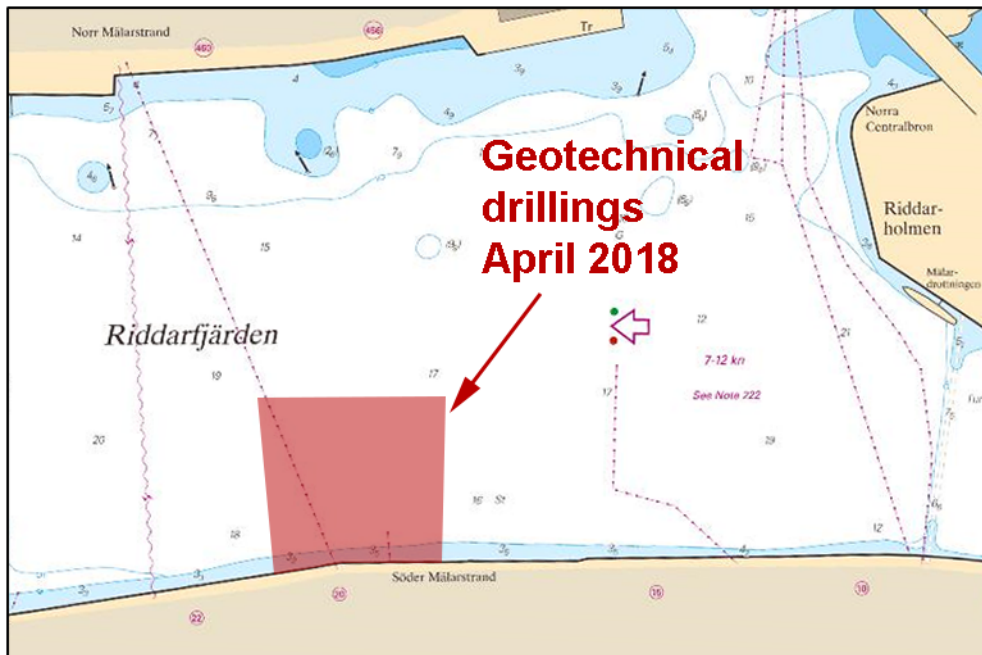
Geotechnical drillings are in progress at 'Söder Mälarstrand', Riddarfjärden in Stockholm.

The surveys are conducted from a 12*5 meter barge.

Geotechnical drillings	59-19,30N	018-03,04E
------------------------	-----------	------------

Not shown in ENC.

Bsp Mälaren - Hjälmaran 2016/s51, Bsp Stockholm M 2016/s10, Bsp Stockholm M 2018/s10



Geotechnical drillings at 'Söder Mälarstrand'

WSP Sverige AB. Publ. 5 april 2018

Central Baltic

* 12933

Chart: 6, 7, 71

Sweden. Central Baltic. Gotland. Eastern side. Faludden. Light re-established.

Replace	tower with light, Iso 2s 10m 8M	56-59,716N	018-23,762E
---------	---------------------------------	------------	-------------

Bsp Kalmarsund 2014/s07

Fyrtilsyn Gotland. Publ. 5 april 2018

Southern Baltic

* 12825

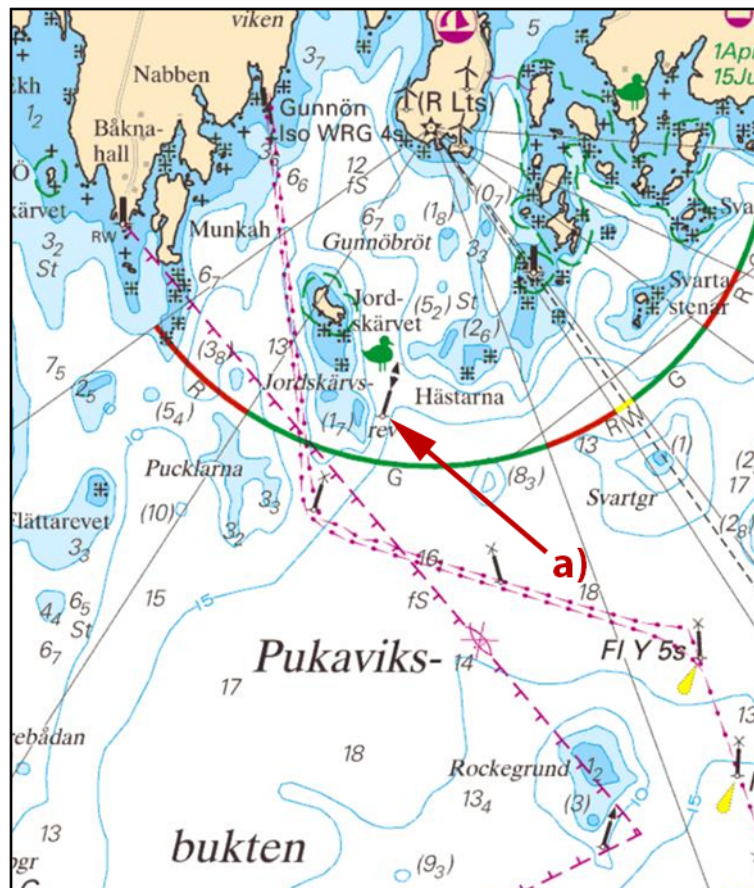
Chart: 742

Sweden. Southern Baltic. Blekinge. Pukaviksbukten. Jordskärvsrev. Buoyage.

Note: This change will be performed during spring of 2018.

Replace	south cardinal spar buoy with east cardinal spar buoy	a)	56-08,28N	014-46,27E
---------	---	----	-----------	------------

Bsp Hanöbukten 2014/s20



Cardinal buoy at Jordskärvsrev

Sjöfartsverket, Norrköping. Publ. 5 april 2018

The Sound

* 12982 (T)

Chart: 74, 92, 921, 922

Sweden. The Sound. S of Landskrona. Bay of Lundåkrabukten. Hydrographic surveys.

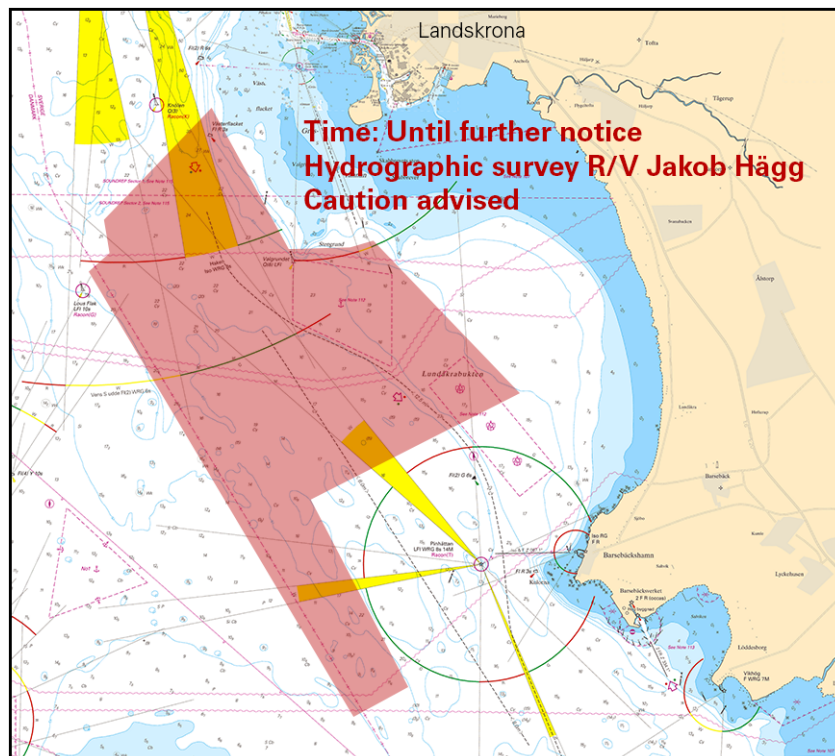
Time: Until further notice

A hydrographic survey by survey vessel 'R/V Jakob Hägg' is ongoing in Bay of Lundåkrabukten south of Landskrona. Mariners are advised to maintain a sharp lookout and to pass at a safe distance.

Bay of Lundåkrabukten	55-47,473N	012-41,296E
-----------------------	------------	-------------

Not shown in ENC.

Bsp Sydkusten 2012/s13, s14, s16



Hydrographic depth survey - Bay of Lundåkrabukten

Sjöfartsverket. Publ. 5 april 2018

Kattegat

* 12808 (T)

Chart: 1352, 9312

Sweden. Kattegat, Lake Vänern and Trollhätte kanal. Göteborg. Bridge 'Götaälvbron' will remain closed on May 19, 2018.

Time: May 19, 2018, 1200 - 1815 LT

Bridge 'Götaälvbron' will be kept closed during the running event 'Göteborgsvarvet'.

Bridge 'Götaälvbron'	57-42,870N	011-58,020E
----------------------	------------	-------------

Bsp Västkusten S 2016/s59

Sjöfartsverket, Göteborg. Publ. 5 april 2018