

Notices to Mariners, SWEDEN Swedish Maritime Administration



Areas in Swedish Notices to Mariners



SJÖFARTSVERKET

Editorial office
Swedish Maritime Administration
Ufs
601 78 NORRKÖPING
Sweden
tel: 0771 630 605
e-mail: ufs@sjofartsverket.se
Publisher:
Hydrographer Patrik Wiberg

ANNOUNCEMENTS

No Announcements in this booklet.

NOTICES

Bay of Bothnia

* 12949

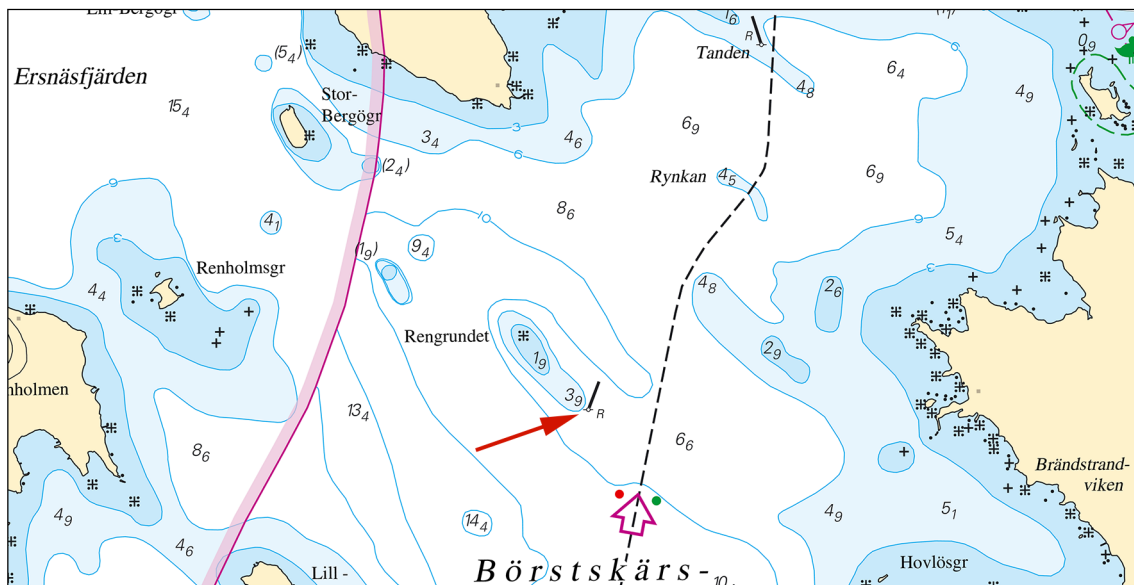
Chart: 414, 415

Sweden. Bay of Bothnia. S of Luleå. V of Germandön. Rengrundet. Move spar buoy.

Move	port hand spar buoy approx. 1200 m SE to	65-28,050N	022-05,713E
-------------	------------------------------------------	------------	-------------

Note: The move will take place after the ice has melted in the spring of 2018.

Bsp Bottenviken 2014/s26, s30, s70



New position of spar buoy W of Germandön

Sjöfartsverket. Publ. 22 mars 2018

Northern Baltic

* 12944 (T)

Chart: 6143

Sweden. Northern Baltic. Stockholm archipelago. NE of Vindö. Träskö-Gåln - Karsholm. Icebreaking prohibited.

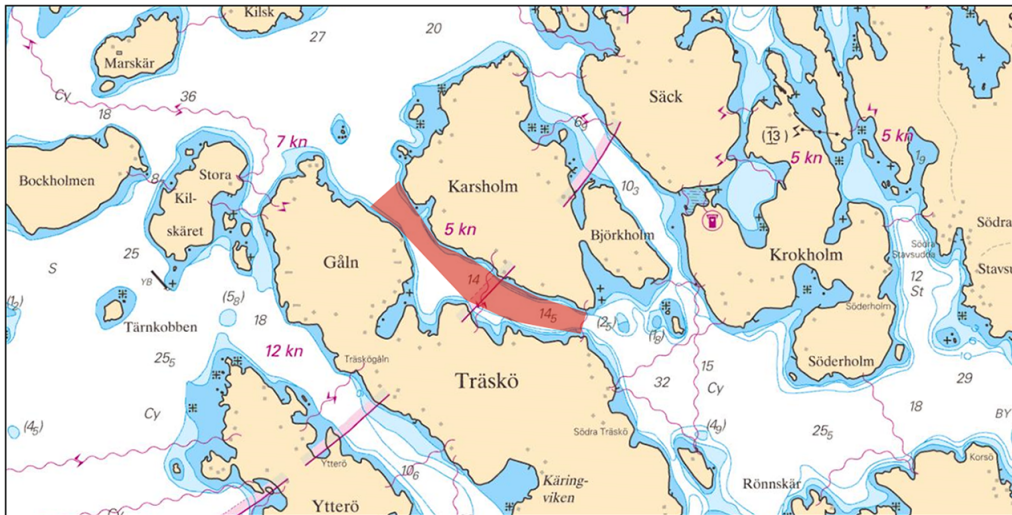
Expired notices: 2018:694/12937(T)

Time: Until the spring of 2018.

Icebreaking prohibited in the sound	59-23,3N	018-46,8E
-------------------------------------	----------	-----------

Not shown in ENC.

Bsp Stockholm M 2016/s18, Bsp Stockholm M 2018/s18, Bsp Stockholm N 2016/s40, s44, s45, Bsp Stockholm N 2018/s40, s44, s45



Icebreaking prohibited in the sound between Träskö-Gåln and Karsholm

Polisen, Stockholm. Publ. 16 mars 2018

*** 12948 (T)**

Chart: 6212

Sweden. Northern Baltic. Norrköping. Bridge 'Händelöbron' will not be opened March 23 - 24 and April 13 - 14.

Expired notices: 2018:694/12941(T)

The bridge will not open during 24 hours at two occasions due to bridge repairs. Information about bridges is also available at: www.sjofartsverket.se/bridges.

The bridge will not be opened as follows
March 23, 1700 LT - March 24, 1700 LT
April 13, 1400 LT - April 14, 1400 LT*
* might be prolonged to 1700 LT

Bridge 'Händelöbron'	58-36,58N	016-12,38E
----------------------	-----------	------------

Not shown in ENC.

Bsp Ostkusten 2015/s58

Norrköpings kommun. Publ. 20 mars 2018

*** 12952 (T)**

Chart: 616, 6162, 6163

Sweden. Northern Baltic. E of Utö. Gunnery exercises. April 4 - 15, 2018.

Gunnery exercises will be carried out within Utö firing range during stated times. The current extension of the closed area is given in the table.

Information during practice times VHF channel 16, call Utö skjutfält, or phone +46 8 501 570 45. Information about upcoming practice times, phone: +46 10 823 18 23, Muskö Sjöcentral.

Day	Time	Range from shore
April 4	1300 - 2100 LT	3.8 M
April 5 - 9	0830 - 2200 LT	3.8 M
April 10	0830 - 2400 LT	3.8 M
April 15	0900 - 1800 LT	4.4 M

Position: Approx.	58-54N	018-20E	Utö Firing Danger Area
-------------------	--------	---------	------------------------

Not shown in ENC.

Bsp Stockholm S 2016/s17, s18, s19, s37, Bsp Stockholm S 2018/s17, s18, s19, s37

Försvarsmakten, Utö. Publ. 22 mars 2018

The Sound

* 12947 (T)

Chart: 8141, 9211

Sweden. The Sound. Port of Malmö. Dredging operation in the spring of 2018.

Time: Spring 2018

Dredging in progress in Port of Malmö.

Contact: The dredger "Sjögrip" is monitoring VHF Ch 14.

Port of Malmö	55-37,40N	012-58,88E
---------------	-----------	------------

Not shown in ENC.

Bsp Sydkusten 2012/s17, s38, s39, s44, s45, s46

Copenhagen Malmö Port AB. Publ. 21 mars 2018

* 12957 (T)

Chart: 922

Sweden. The Sound. N of Helsingborg. Domsten. Grollegrund. Spar buoy missing.

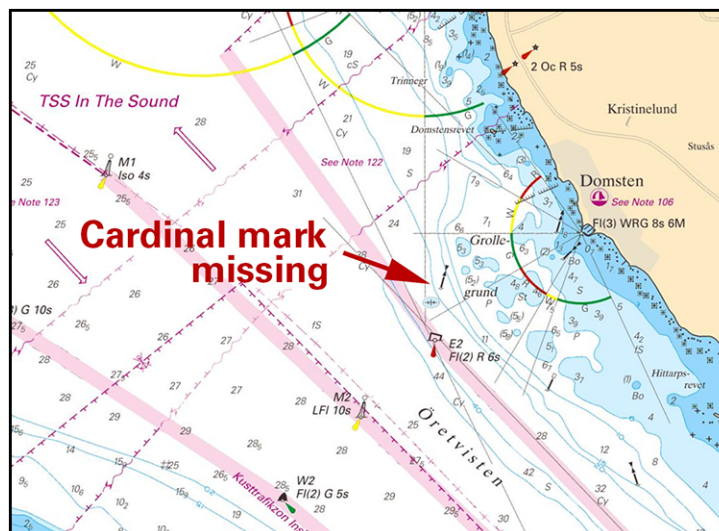
Time: Until further notice

The west cardinal spar buoy at Grollegrund is missing.

Missing spar buoy	56-06,67N	012-34,80E
-------------------	-----------	------------

Not shown in ENC.

Bsp Sydkusten 2012/s11



Grollegrund

Sjöfartsverket, Norrköping. Publ. 22 mars 2018

Kattegat

* 12950

Chart: 1352, 931, 9312

Sweden. Kattegat. Göteborg. Göta älv. Marieholmsbron. Eastern passage closed.

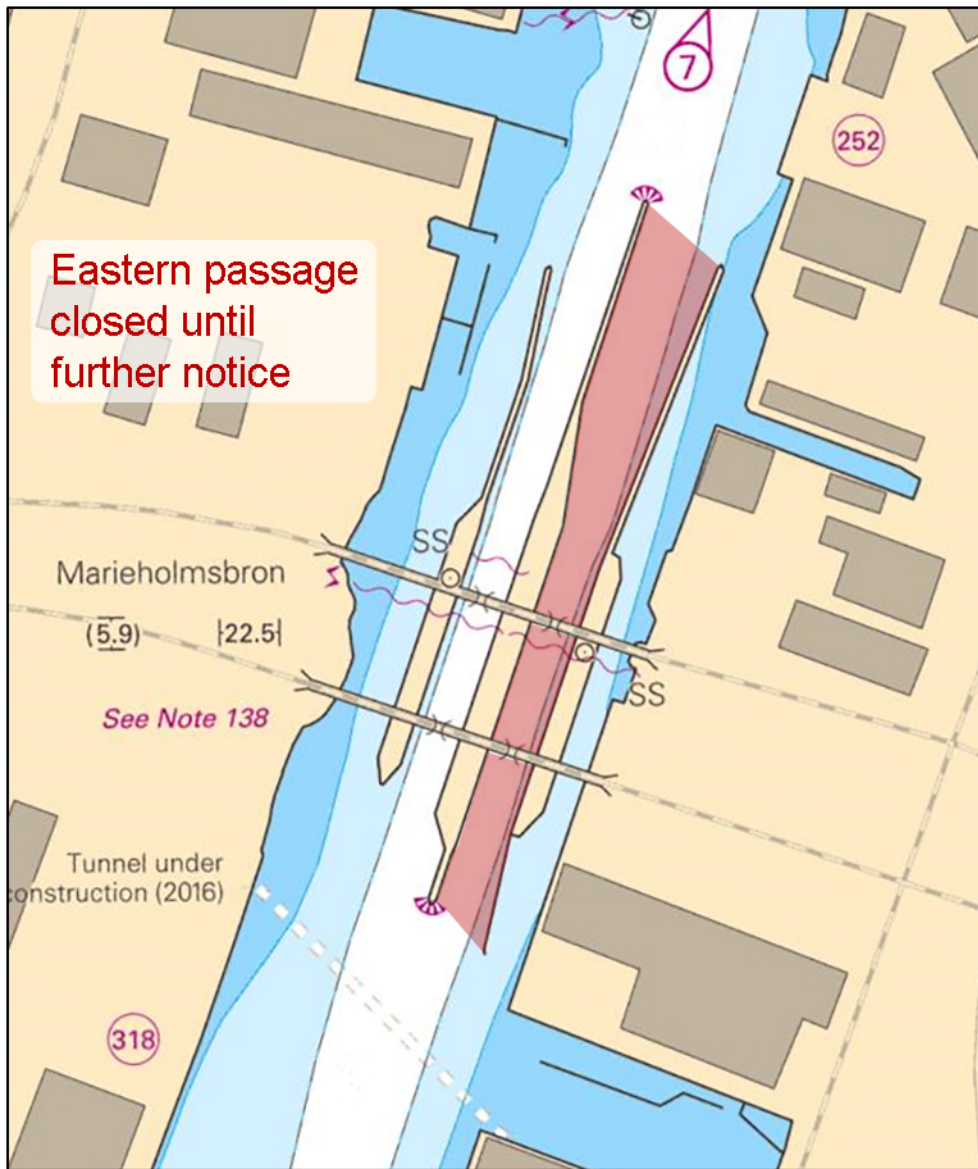
Expired notices: 2017:680/12714

The eastern passage of the Marieholm bridges is closed until further notice.

Passage of the bridges must be done in the western passage with great caution according to instructions given by the bridge master on VHF channel 9.

The bridges at Marieholm	57-43,72N	011-59,61E
--------------------------	-----------	------------

Bsp Göta kanal 2011/s59



Bridges Mariefholmsbroarna. Eastern passage closed

Sjöfartsverket, Göteborg. Publ. 22 mars 2018

* 12953 (T)

Chart: 92, 923, 924

Sweden. Kattegat. W of Halmstad. Ringenäs. Firing exercise. March 27 - 28.

Position: Approx.	56-40,8N	012-38,6E	Firing restriction area R41 A RINGENÄS
-------------------	----------	-----------	----------------------------------------

Firing will take place at Ringenäs firing range during stated times. The dangerous area extending from shore according to table below. A light on shore, VQ R, will be shown during firing. Part of restriction area R41A will be closed for vessels during stated times. During practice, light VQ R is shown from shore.

For further information call +46 35 266 39 55, +46 35 536 77.

Day	Time	Range
March 27	0900 - 1600 LT	1.7 M
March 28	0900 - 1600 LT	2,5 M

Not shown in ENC.

Bsp Västkusten S 2016/s29, s30

Försvarsmakten, Lv6. Publ. 22 mars 2018

* 12956

Chart: 922, 923

Sweden. Kattegat. Skälderviken. N of Arlid. Marine farm removed.

Expired notices: 2017:665/12374(T)

The approximately 60 m long marine farm, and the two yellow spar buoys that marked the position has been withdrawn.

Marine farm test	56-18,0N	012-37,0E
------------------	----------	-----------

Bsp Sydkusten 2012/s08, s09, Bsp Västkusten S 2016/s34, s35

Marin Biogas. Publ. 22 mars 2018

Skagerrak

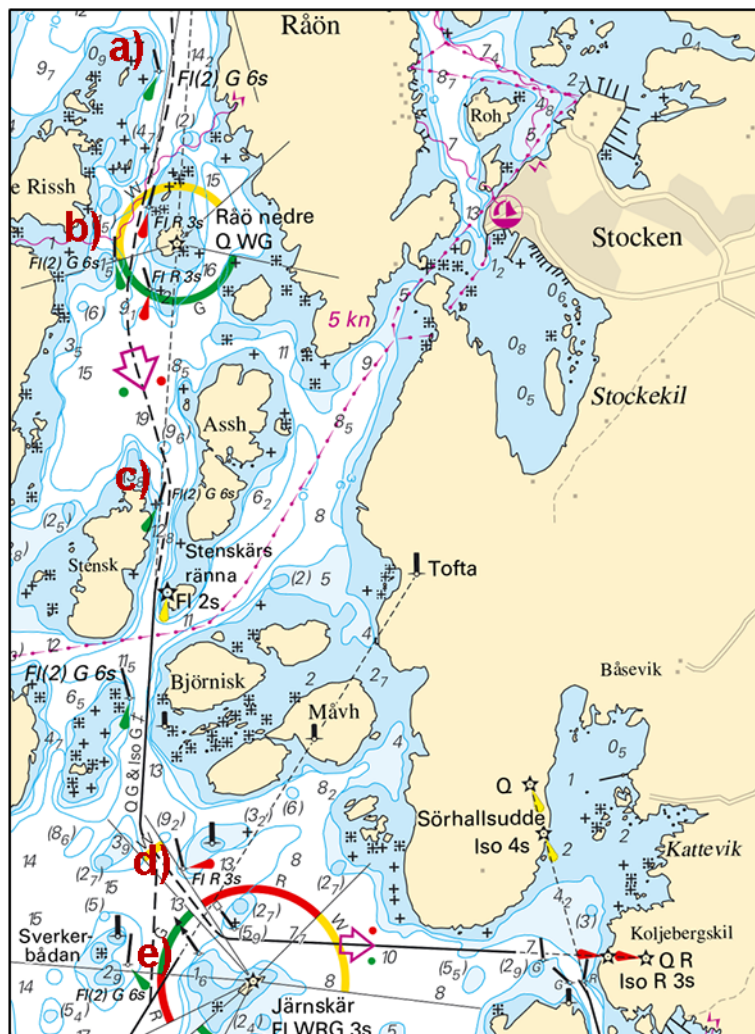
* 12869

Chart: 932

Sweden. Skagerrak. Orust. Härmanö. Buoyage.

Amend	starboard hand spar buoy to starboard hand light spar buoy FI(2) G 6s	a)	58-09,310N	011-23,855E
Amend	starboard hand spar buoy to starboard hand light spar buoy FI(2) G 6s	b)	58-09,028N	011-23,722E
Amend	starboard hand spar buoy to starboard hand light spar buoy FI(2) G 6s	c)	58-08,660N	011-23,840E
Amend	port hand spar buoy to port hand light spar buoy FI R 3s	d)	58-08,110N	011-23,895E
Amend	starboard hand spar buoy to starboard hand light spar buoy FI(2) G 6s	e)	58-07,967N	011-23,734E

Bsp Västkusten N 2016/s22, s23, s38, Bsp Västkusten S 2016/s10, s11, s63



Spar buoys are replaced by light spar buoys

Sjöfartsverket, Norrköping. Publ. 17 mars 2018

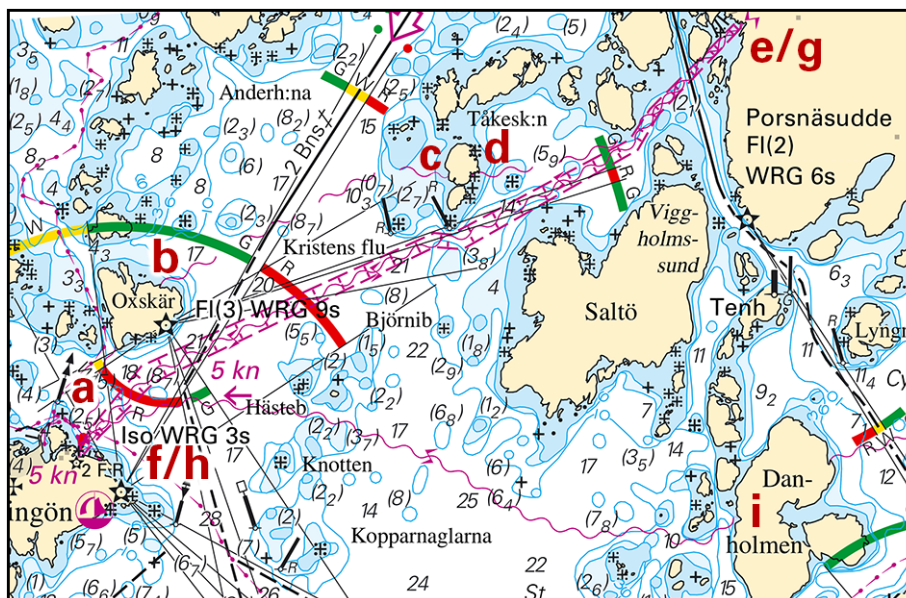
* 12902

Chart: 932

Sweden. Skagerrak. W of Orust. Koljebergskil - Käringön - Danholmen. Submarine cables. Anchoring prohibited.

Amend	submarine power cable to disused submarine cable between a) and e)	a)	58-06,905N	011-22,261E	Käringön - Oxskär
		b)	58-07,174N	011-22,570E	East side of island 'Oxskär'
		c)	58-07,457N	011-23,955E	West side of island 'Ryssjeskär'
		d)	58-07,465N	011-24,084E	East side of island 'Ryssjeskär'
		e)	58-07,862N	011-25,370E	Flackeviken
Insert	submarine power cable and area 'anchorage prohibited' between f) and g)	f)	58-06,731N	011-22,153E	Island 'Käringön'
		g)	58-07,862N	011-25,370E	Flackeviken
Insert	submarine power cable between h) and i)	h)	58-06,731N	011-22,153E	Island 'Käringön'
		i)	58-06,576N	011-25,354E	West side of island 'Danholmen'

Bsp Västkusten N 2016/s22, s23, s38, Bsp Västkusten S 2016/s10, s11



Sjökablar W of island 'Orust'

Västra Orusts Energitjänst. Publ. 21 mars 2018