

Notices to Mariners, SWEDEN Swedish Maritime Administration



Areas in Swedish Notices to Mariners



SJÖFARTSVERKET

Editorial office
Swedish Maritime Administration
Ufs
601 78 NORRKÖPING
Sweden
tel: 0771 630 605
e-mail: ufs@sjofartsverket.se
Publisher:
Hydrographer Patrik Wiberg

ANNOUNCEMENTS

No Announcements in this booklet.

NOTICES

Bay of Bothnia

* 12834 (T)

Chart: 41, 421

Sweden. Bay of Bothnia. E of Byske. Tåme. Gunnery exercises February 13 - 25, 2018.

| | | | |
|-------------------|--------|---------|---------------------------|
| Position: Approx. | 64-55N | 021-30E | Tåme Firing practice area |
|-------------------|--------|---------|---------------------------|

Gunnery exercises will be carried out at Tåme Firing range during times listed below. During these times the charted danger area "R 58" is closed to navigation within stated distance from shore.

During firing a red balloon is shown from the observation towers. Further information on VHF channel 16, call Tåme skjutfält, or phone +46 921 348405 alt. +46 921 349100.

| Day | Time | Range from shore |
|------------------|----------------|------------------|
| February 13 - 15 | 0730 - 1630 LT | 6.8 M |
| February 16 | 1730 - 1130LT | 6.8 M |
| February 20 - 21 | 0800 - 1730 LT | 6.8 M |
| February 22 | 0800 - 2030 LT | 6.8 M |
| February 23 - 25 | 0800 - 1730 LT | 6.8 M |

Not shown in ENC.

Bsp Bottenviken 2014/s06, s37, s38, s39, s40, s41, s42, s44

Försvarmakten, Tåme skjutfält. Publ. 8 februari 2018

Sea of Bothnia

* 12213

Chart: 532, 533, 5331

Sweden. Sea of Bothnia. Söderhamn. Sandarne. Leading lights reestablished.

Expired notices: 2017:651/12135(T)

The leading lights in Sandarne is now back in operation.

| | | |
|-------------------------|----------|-----------|
| Sandarne front and rear | 61-15,6N | 017-10,4E |
|-------------------------|----------|-----------|

Note. The rear light has been moved from a tank to a mast. The leading line is unchanged. New position of the light will be published in Ufs shortly.

Adm LoL vol C 6099, 6099.1

Bsp Bottenhavet S 2013/s22, s40

Söderhamns Kommun. Publ. 8 februari 2018

* 12725

Chart: 429, 512, 5121

Sweden. Sea of Bothnia. Umeå. Leading light operational.

Expired notices: 2017:681/12724(T)

The red leading light on southern part of Hillskär is operational.

| | | |
|---------------------|-----------|------------|
| Leading light, rear | 63-40,92N | 020-20,34E |
|---------------------|-----------|------------|

Bsp Bottenhavet N 2013/s32, s37, s45, s46, s47

Kvarken Ports. Publ. 7 februari 2018

Sea of Åland and Archipelago Sea

* 12759

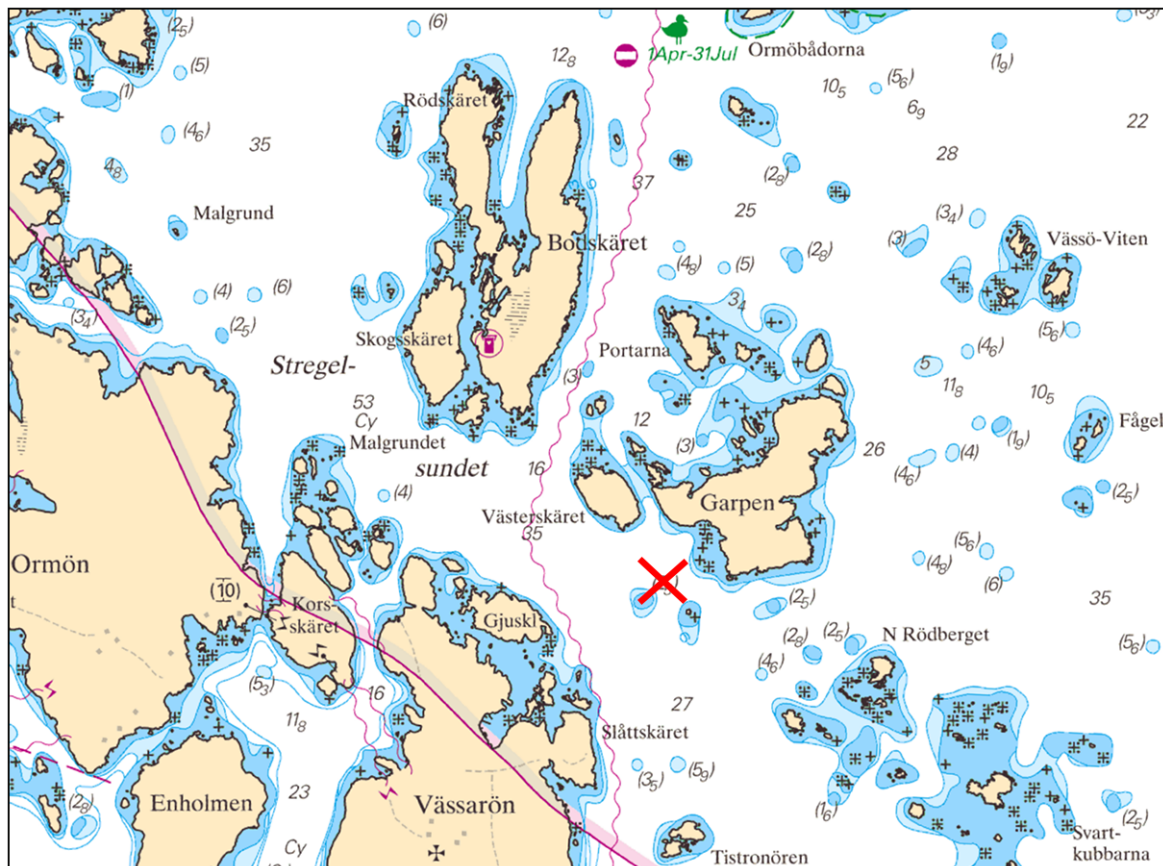
Chart: 536

Sweden. Sea of Åland and Archipelago Sea. SE Gräsö. Vässarön. Garpen. Less depth.

Shallow area is reported to have a depth less than 2.5 metres.

| | | | |
|--------|-------------|----------|-----------|
| Delete | depth 2,5 m | 60-16,0N | 018-42,8E |
|--------|-------------|----------|-----------|

Bsp Stockholm N 2016/s15, s18



Remove depth 2,5 m

Sjöfartsverket. Publ. 7 februari 2018

Northern Baltic

* 12830 (T)

Chart: 616, 6162, 6163

Sweden. Northern Baltic. E of Utö. Gunnery exercises. February 6 - 15, 2018.

Expired notices: 2018:685/12775(T)

See: 2018:687/12781(T)

Gunnery exercises will be carried out within Utö firing range during stated times. The current extension of the closed area is given in the table.

Information during practice times VHF channel 16, call Utö skjutfält, or phone +46 8 501 570 45. Information about upcoming practice times, phone: +46 10 823 18 23, Muskö Sjöcentral.

| February | Time | Range from shore |
|----------|----------------|------------------|
| 6 | 0830 - 1900 LT | 4.2 M |
| 7 | 0830 - 1800 LT | 4.2 M |
| 8 | 0830 - 2200 LT | 4.2 M |
| 9 | 0830 - 1600 LT | 4.2 M |
| 10, 11 | 0830 - 2200 LT | 4.2 M |
| 12 | 0800 - 1200 LT | 4.2 M |
| 14 | 1400 - 2100 LT | 1.7 M |
| 15 | 0830 - 2000 LT | 1.7 M |

| | | | |
|-------------------|--------|---------|------------------------|
| Position: Approx. | 58-54N | 018-20E | Utö Firing Danger Area |
|-------------------|--------|---------|------------------------|

Not shown in ENC.

Bsp Stockholm S 2016/s17, s18, s19, s37

Försvarsmakten, Utö. Publ. 7 februari 2018

* 12835 (T)

Chart: 6141, 6142

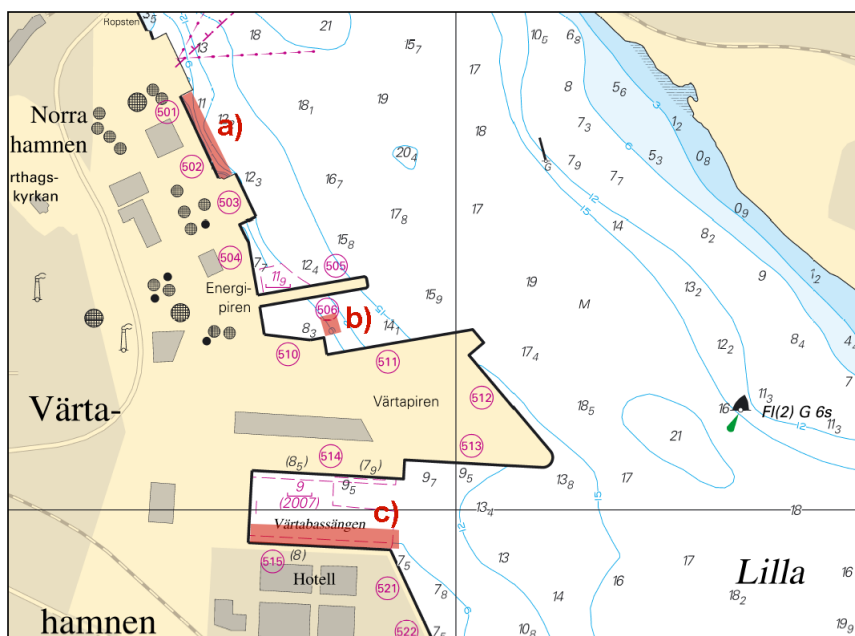
Sweden. Northern Baltic. Port of Stockholm. Värtahamnen. Dredging winter-spring 2018.

Time: Winter-spring 2018, as below.

Dredging works are in progress at three places in Värtahamnen. The work is performed by an excavator on a jack-up platform. Traffic to the quays will not be affected as place for dredging will be changed depending on the availability of the quays.

| Location | | | | Time |
|---------------------------|----|-----------|------------|-----------------------------------|
| Berth 501-502 | a) | 59-21,37N | 018-06,52E | Until the beginning of March 2018 |
| Between berth 510 and 506 | b) | 59-21,18N | 018-06,75E | Until the beginning of April 2018 |
| Berth 515 | c) | 59-20,97N | 018-06,74E | Until the beginning of April 2018 |

Bsp Stockholm M 2016/s09, s10



Dredging in Värtahamnen

Stockholms Hamnar. Publ. 8 februari 2018

* 12836

Chart: 6211

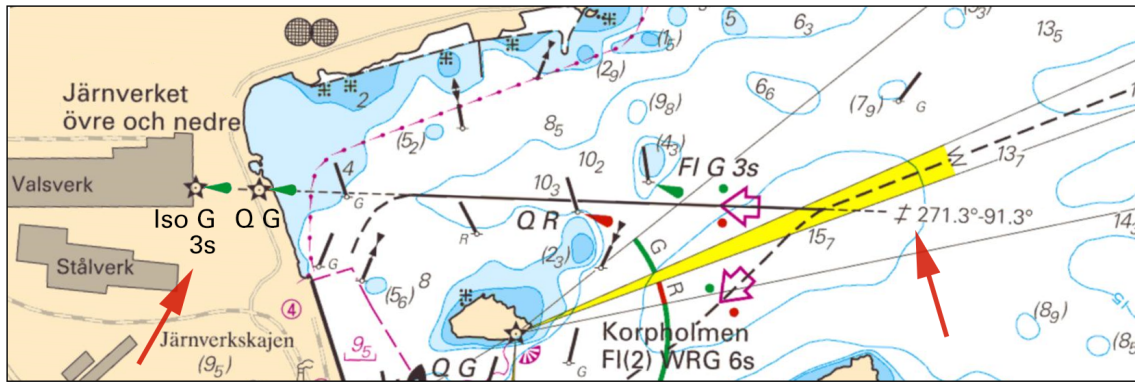
Sweden. Northern Baltic. Port of Oxelösund. Järnverkskajen. Leading lights changed.

| | | | | | |
|--------------|-------------------------------------|----------|----|------------|-------------|
| Amend | Character at rear leading light to | Iso G 3s | a) | 58-40,754N | 017-07,837E |
| Amend | Character at front leading light to | Q G | b) | 58-40,752N | 017-07,996E |

Note. Delete former character (2 F R) in connection to the lights and leading line, see chartlet.

Adm LoL: C6810.1 and C6810.2

Bsp Ostkusten 2015/s21



Oxelösund, amended character at leading lights

Oxelösunds Hamn AB Publ. 7 februari 2018

* 12838 (T)

Chart: 6142

Sweden. Northern Baltic. Vaxholm. The passage east of Kastellet. Construction works. Buoys. Caution.

Expired notices: 2017:663/12335(T)

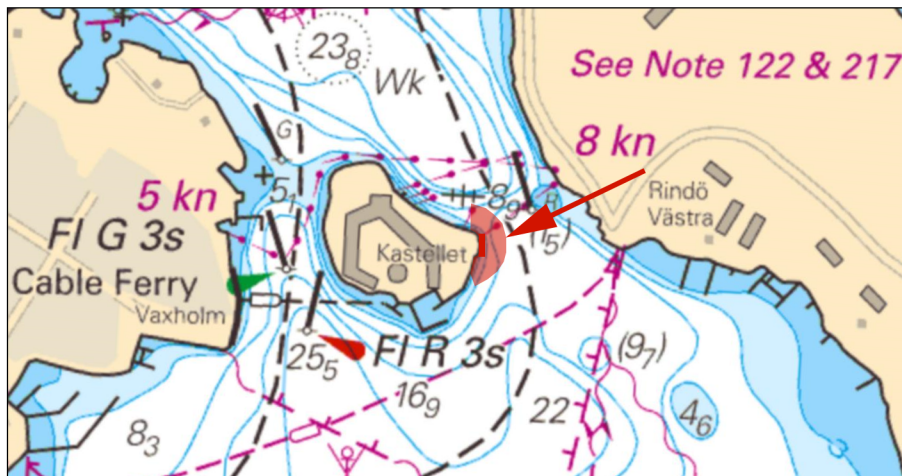
Time: Until spring 2018.

Demolition of existing quay and construction of new will be performed in stated position on the eastern shore of Kastellet.

The working area, which extends 40 m from the shore, will be marked by two yellow special buoys, FI Y 3s. Passage must take place with great caution.

| | | |
|----------|------------|-------------|
| The quay | 59-24,185N | 018-21,700E |
|----------|------------|-------------|

Bsp Stockholm M 2016/s14, s46, Bsp Stockholm N 2016/s42



Construction works at Kastellet, Vaxholm

Navit AB. Publ. 8 februari 2018

Kattegat

* 12839 (T)

Chart: 92, 923, 924

Sweden. Kattegat. W of Halmstad. Ringenäs. Firing exercise. February 15.

| | | | |
|-------------------|----------|-----------|--|
| Position: Approx. | 56-40,8N | 012-38,6E | Firing restriction area R41 A RINGENÄS |
|-------------------|----------|-----------|--|

Firing will take place at Ringenäs firing range during stated times. The dangerous area extending from shore according to table below. A light on shore, VQ R, will be shown during firing.

Part of restriction area R41A will be closed for vessels during stated times. During practice, light VQ R is shown from shore.

For further information call +46 35 266 39 55, +46 35 536 77.

| Day | Time | Range |
|-------------|----------------|-------|
| February 15 | 0900 - 1530 LT | 2,4 M |

Not shown in ENC.

Bsp Västkusten S 2016/s29, s30

Försvarsmakten, Lv6. Publ. 8 februari 2018