

Notices to Mariners, SWEDEN Swedish Maritime Administration



Areas in Swedish Notices to Mariners



SJÖFARTSVERKET

Editorial office
Swedish Maritime Administration
Ufs
601 78 NORRKÖPING
Sweden
tel: 0771 630 605
e-mail: ufs@sjofartsverket.se
Publisher:
Hydrographer Patrik Wiberg

ANNOUNCEMENTS

No Announcements in this booklet.

NOTICES

Bay of Bothnia

* 12739 (T)

Chart: 4101, 414

Sweden. Bay of Bothnia. SE of Luleå. Junkön. Firing exercises in February, 2018.

Gunnery exercises will be carried out within Junkön firing range during stated times
The area is supervised. Firing will be discontinued when vessels passing through the area.
Further information during firing: +46 70 547 35 15 or +46 70 639 53 22.

Junkön firing range	65-25N	022-20E
---------------------	--------	---------

Day	Time
February 12-15, 2018	0730-1630 LT, daily
February 19-22, 2018	0730-1630 LT, daily

Not shown in ENC.

Bsp Bottenviken 2014/s24, s27, s63

Norrbottens flygflottilj, Luleå. Publ. 2 januari 2018

Sea of Bothnia

* 12726

Chart: 532

Sweden. Sea of Bothnia. Iggesund. Light Dukarsund. Amended sectors.

The sectors of light Dukarsund have been amended according to table below.

light Dukarsund	61-37,366N	017-10,881E	
G 75,0° - 82,5°			Unchanged
W 82,5° - 84,5°			
R 84,5° - 103,0°			
W 103,0° - 247,0°			Unchanged
G 247,0° - 268,5°			Unchanged
W 268,5° - 273,0°			Unchanged
R 273,0° - 283,0°			Unchanged
Dk 283,0° - 75,0°			Unchanged

Adm LoL: C6068

Bsp Bottenhavet S 2013/s16, s17, s44

Transportstyrelsen, Norrköping. Publ. 4 januari 2018

Northern Baltic

* 12643

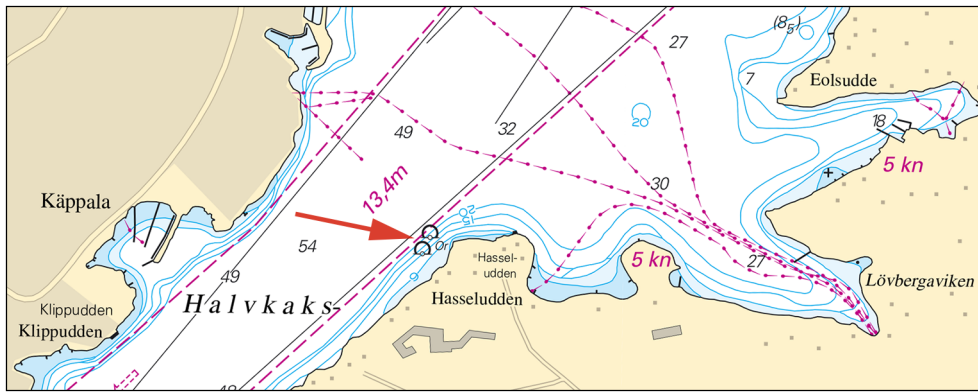
Chart: 6142

Sweden. Northern Baltic. Stockholm. Halvkakssundet. Hasseludden. Buoys.

Insert	buoy, Or	a)	59-20,911N	018-14,400E
Insert	buoy, Or	b)	59-20,885N	018-14,377E

Note. The buoys are orange plastic buoys.

Bsp Stockholm M 2016/s11



Buoys off Hasseludden

Sjöpolisen, Stockholm. Publ. 4 januari 2018

* 12758 (T)

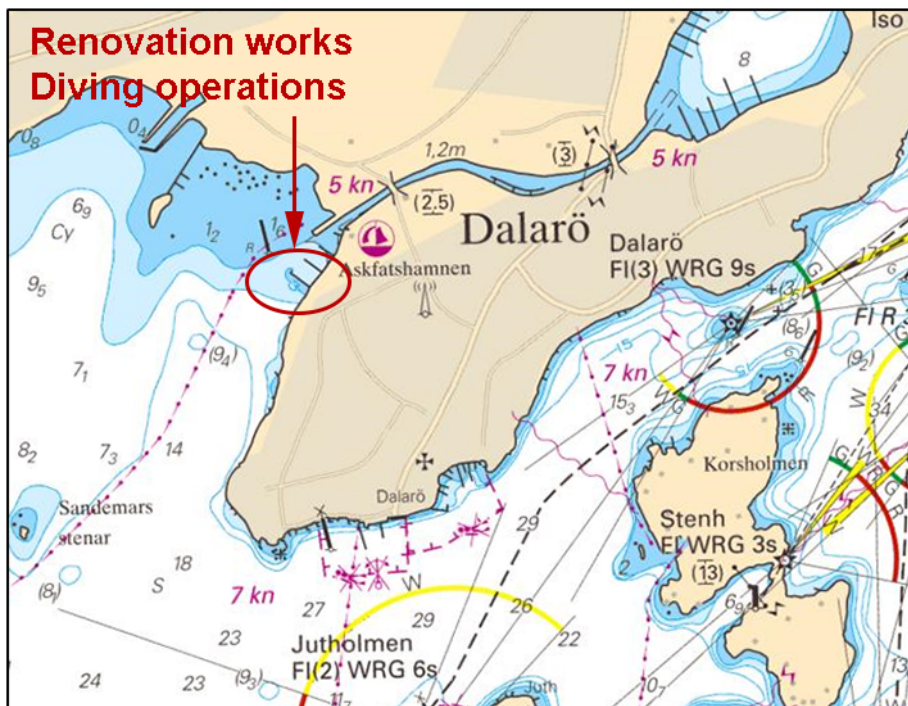
Chart: 616, 6163

Sweden. Northern Baltic. Stockholm archipelago. Dalarö. Askfatshamnen. Renovation works. Diving operations.

Time: January - April, 2018. Weekdays 0700 - 1900 LT
 Renovation works are in progress in Askfatshamnen, Dalarö.
 When diving operations are conducted, signal flag "A" will be hoisted.
 Mariners are requested to proceed with caution.
 Contact: +46(0)733506803; +46(0)733506804

Askfatshamnen	59-08,10N	018-24,04E
---------------	-----------	------------

Bsp Stockholm M 2016/s42, s44, Bsp Stockholm S 2016/s06, s09



Askfatshamnen, Dalarö

Svenska Undervattensentreprenader AB. Publ. 3 januari 2018

Lake Mälaren and Södertälje kanal

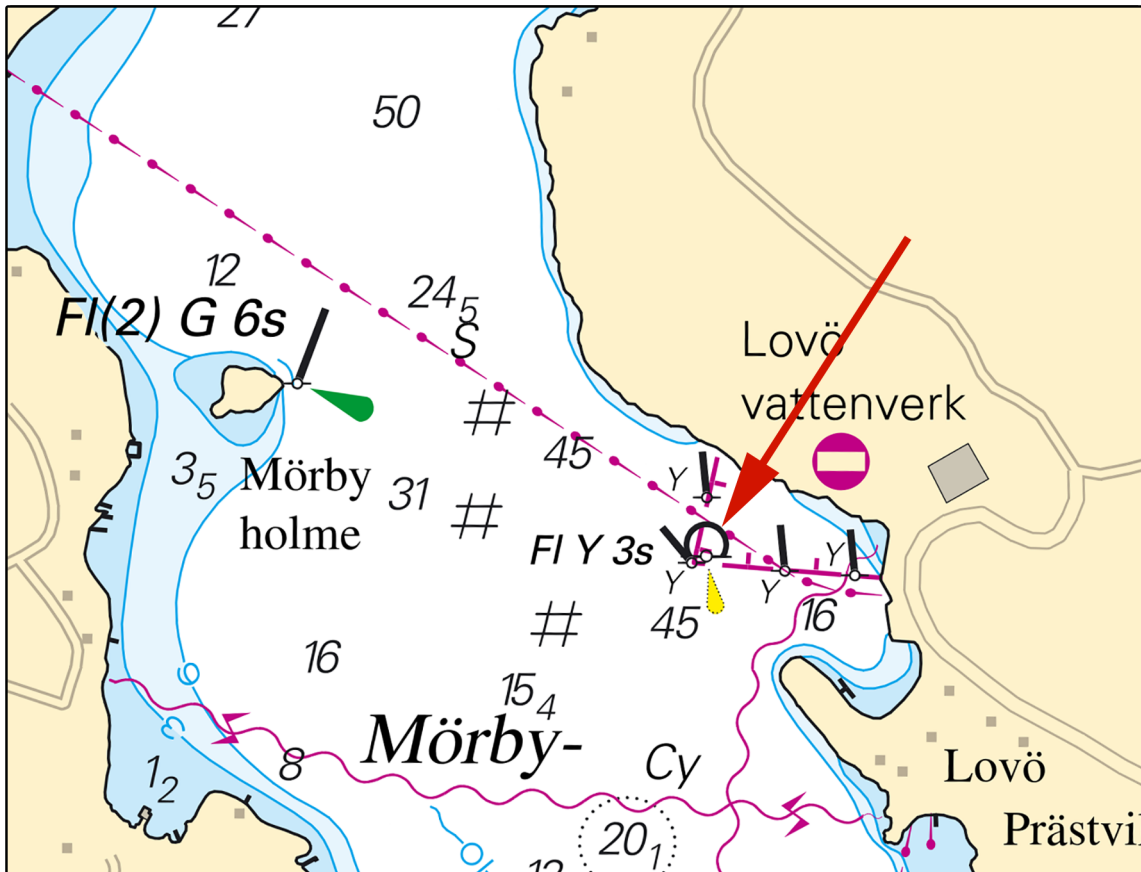
* 11883

Chart: 111

Sweden. Lake Mälaren and Södertälje kanal. Mörbyfjärden. Lovön. Utmärkning.

Insert	special light buoy, FI Y 3s	a)	59-19,699N	017-47,941E
--------	-----------------------------	----	------------	-------------

Bsp Mälaren - Hjälmaren 2016/s49



Lovön

Stockholm Vatten AB. Publ. 4 januari 2018

Kattegat

* 12663

Chart: 931, 932, 9321

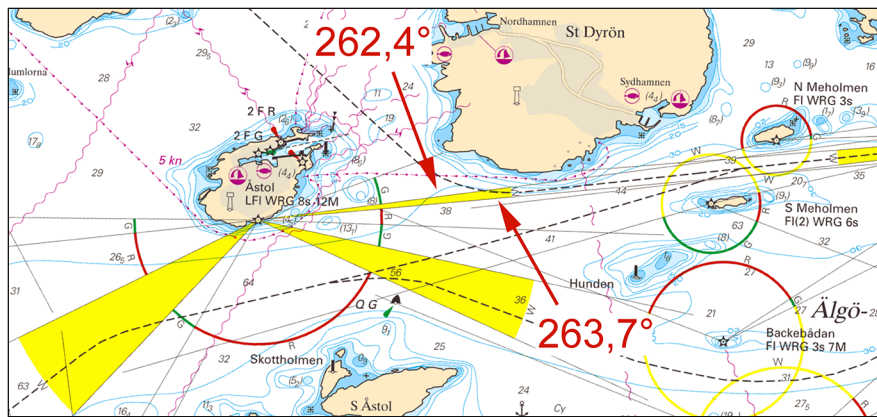
Sweden. Kattegat. S of Tjörn. Light Åstol. Amendments to white sector.

Light Åstol	57-55,26N	011-35,13E
-------------	-----------	------------

	Sector limits:	
Amend	W 261,7 - 263,9	to W 262,4 - 263,7

Adm LoL: C0490-6

Bsp Västkusten S 2016/s14, s15, s40, s42



Light Åstol. Checked sector limits

Arbetsfartyget Scandica. Publ. 4 januari 2018

Skagerrak*** 12439****Chart: 9331****Sweden. Skagerrak. SW of Kungshamn. Pengeskärsbåden. Amendments to light sectors.**

The sectors of light Pengeskärsbåden have been amended according to table below.

Light Pengeskärsbåden	58-20,815N	011-13,164E
G 199,2° - 232,8°		
W 232,8° - 237,5°		
R 237,5° - 199,2°		

Adm LoL: C0369

Bsp Västkusten N 2016/s26

Sjöfartsverket. Publ. 4 januari 2018

*** 12689****Chart: 937****Sweden. Skagerrak. Strömstad. Tjärnö. Marine farms. Buoyage.**

Insert	special spar buoy	a)	58-53,685N	011-08,729E
Insert	special spar buoy	b)	58-53,674N	011-08,709E
Insert	marine farm in positions c) - h)	c)	58-53,84N	011-08,33E
		d)	58-53,65N	011-08,87E
		e)	58-53,53N	011-09,09E
		f)	58-53,53N	011-09,24E
		g)	58-53,45N	011-09,52E

Bsp Västkusten N 2016/s09



Transportstyrelsen och Länsstyrelsen Västra Götaland. Publ. 4 januari 2018

Inshore waters

* 12757

Chart:

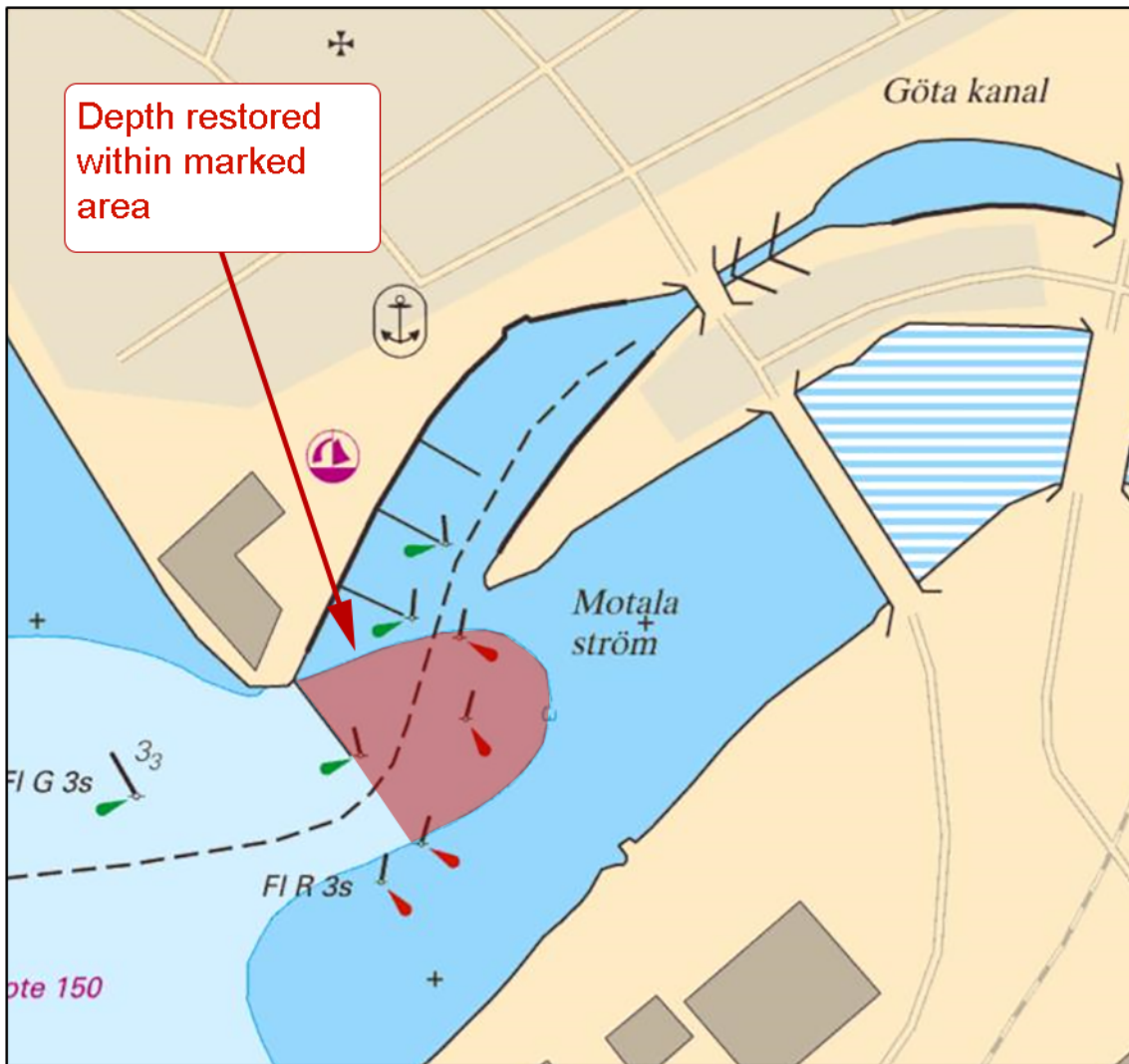
Sweden. Inshore waters. Vättern. Motala. Göta canal. Depth restored.

Expired notices: 2017:650/12123(T)

The depth in 'Göta kanal' fairway in Motala is now back to normal.

Motala	58-31,96N	015-02,33E
--------	-----------	------------

Bsp Göta kanal 2011/s10, s60



Restored depths, Motala