

## Notices to Mariners, SWEDEN Swedish Maritime Administration



### Areas in Swedish Notices to Mariners



**SJÖFARTSVERKET**

Editorial office  
Swedish Maritime Administration  
Ufs  
601 78 NORRKÖPING  
Sweden  
tel: 0771 630 605  
e-mail: [ufs@sjofartsverket.se](mailto:ufs@sjofartsverket.se)  
Publisher:  
Hydrographer Patrik Wiberg



## ANNOUNCEMENTS

\* 12686

### JRCC. New Telephone and fax numbers to SAR, MAS and TMAS from December 4, 2017.

From December 4, 2017, at 1400 LT, the following telephone numbers apply for the different functions at JRCC.

Function at JRCC	New number	Remarks
Switchboard	+46 771 40 90 00	Continuously watched
MAS (Maritime Assistance Service)	+46 10 492 76 50	Regarding ships in difficulty without any danger to human life.
TMAS (Tele Medical Assistance Services)	+46 10 492 79 00	Medical assistance to ships round the clock
ICE INFO	+46 10 492 76 00	For passage report in Sea of Åland and arrival/departure reports to ports with ice-restrictions
FAX	+46 31 290 134	All functions at JRCC

Note. None of these numbers shall be used in case of emergency. To call for rescue by telephone, dial 112.

Ufs A 2016-17 page 5 and 71.

Winter Navigation 2017-2018, page 10.

*Sjöfartsverket, JRCC, Göteborg. Publ. 29 november 2017*

## NOTICES

### Sea of Bothnia

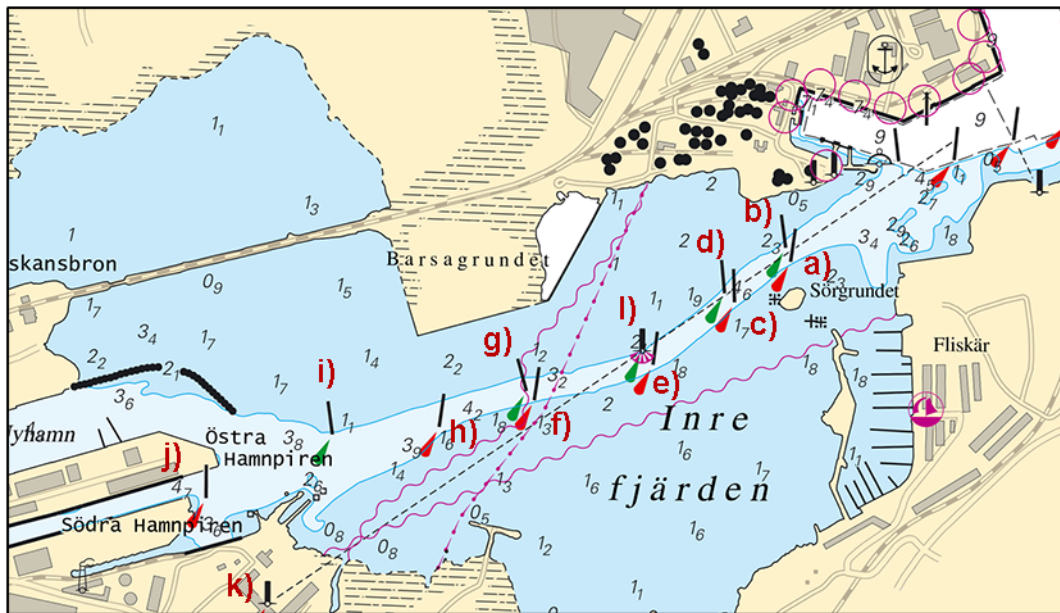
\* 11261

Chart: 5342

### Sweden. Sea of Bothnia. Gävle. Inre fjärden. Amendments to buoyage. New leading line.

<b>Amend</b>	port hand spar buoy to light spar buoy, FI R 3s	a)	60-41,161N	017-12,605E
<b>Amend</b>	starboard hand spar buoy to light spar buoy, FI G 2s	b)	60-41,181N	017-12,591E
<b>Amend</b>	port hand spar buoy to light spar buoy, FI R 3s	c)	60-41,103N	017-12,445E
<b>Amend</b>	starboard hand spar buoy to light spar buoy, FI G 2s	d)	60-41,116N	017-12,416E
<b>Amend</b>	port hand spar buoy to light spar buoy, FI R 3s	e)	60-41,014N	017-12,211E
<b>Amend</b>	port hand spar buoy to light spar buoy, FI R 3s	f)	60-40,963N	017-11,869E
<b>Amend</b>	starboard hand spar buoy to light spar buoy, FI G 2s	g)	60-40,976N	017-11,846E
<b>Amend</b>	port hand spar buoy to light spar buoy, FI R 3s	h)	60-40,925N	017-11,595E
<b>Amend</b>	starboard hand spar buoy to light spar buoy, FI G 2s	i)	60-40,913N	017-11,288E
<b>Insert</b>	port hand light spar buoy, FI R 3s	j)	60-40,822N	017-10,925E
<b>Insert</b>	beacon with light, F R	k)	60-40,673N	017-11,104E
<b>Insert</b>	floodlight on light 'Barsagrund'	l)	60-41,033N	017-12,179E
<b>Insert</b>	leading line through k) and l)			

Bsp Bottenhavet S 2013/s39



Inre fjärden, Gävle

Gävle Hamn AB. Publ. 22 december 2017

**Gulf of Riga**

12748

Chart: 6

**Latvia. Gulf of Riga. Riga bay. Riga. Light Daugavgriva. Character.**

Light character of the Daugavgriva light has been changed.

<b>Amend</b>	from FI W 2,5s 37m 18M	to FFI W 4s 37m 18M	57-03,57N	024-01,30E
--------------	------------------------	---------------------	-----------	------------

Lettland NtM 209-12, 2017. Publ. 22 december 2017

**Northern Baltic**

\* 12503

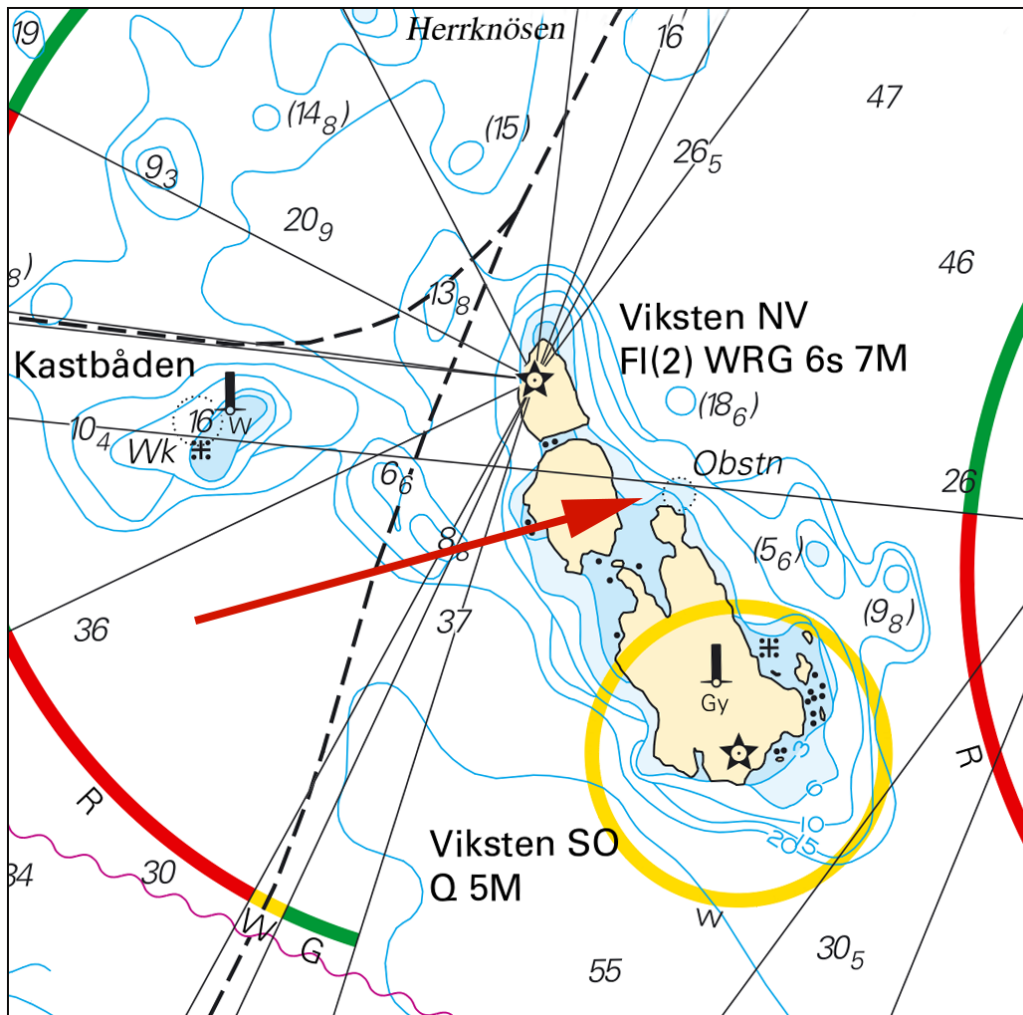
Chart: 617, 6171

**Sweden. Northern Baltic. S of Nynäshamn. Viksten. Sunken pontoon "Alfred".**

Wreckage from the sunken pontoon Alfred is located just outside of Viksten.

<b>Insert</b>	obstruction, depth unknown	58-47,43N	017-56,95E
---------------	----------------------------	-----------	------------

Bsp Stockholm S 2016/s23, s24, s38



Wreckage from pontoon "Alfred"

Pampas Marinentreprenad AB. Publ. 28 december 2017

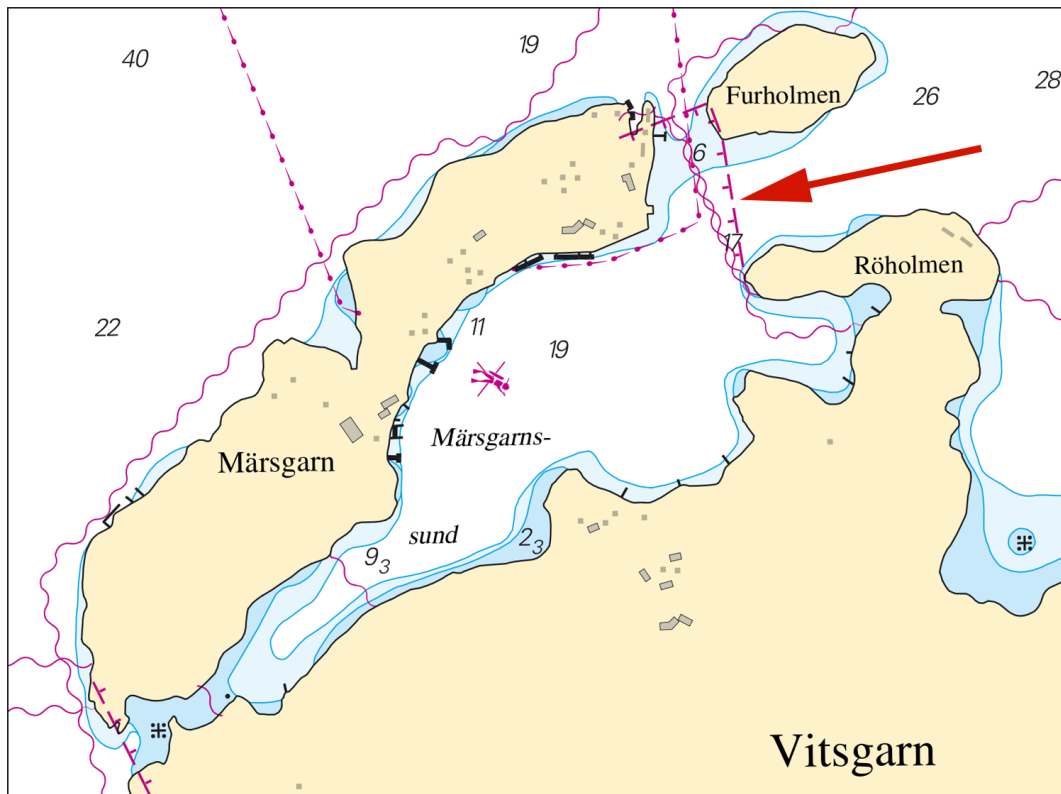
\* 12674

Chart: 616, 6162

Sweden. Northern Baltic. Stockholm. Märsgarn. NE border for restricted area moved.

Amend	northeastern border for the "diving prohibited" area a) - b)	a)	59-03,60N	018-09,35E
		b)	59-03,45N	018-09,40E

Bsp Stockholm S 2016/s08, s14, s34



Moved NE limit for restricted area

Försvarmakten. Publ. 28 december 2017

\* 12749 (T)

Chart: 6, 61, 62, 7, 71, 731, 74, 83

Sweden. Northern Baltic, Central Baltic, Southern Baltic. Nord Stream 2. Seabed surveys.

Time: January 2018

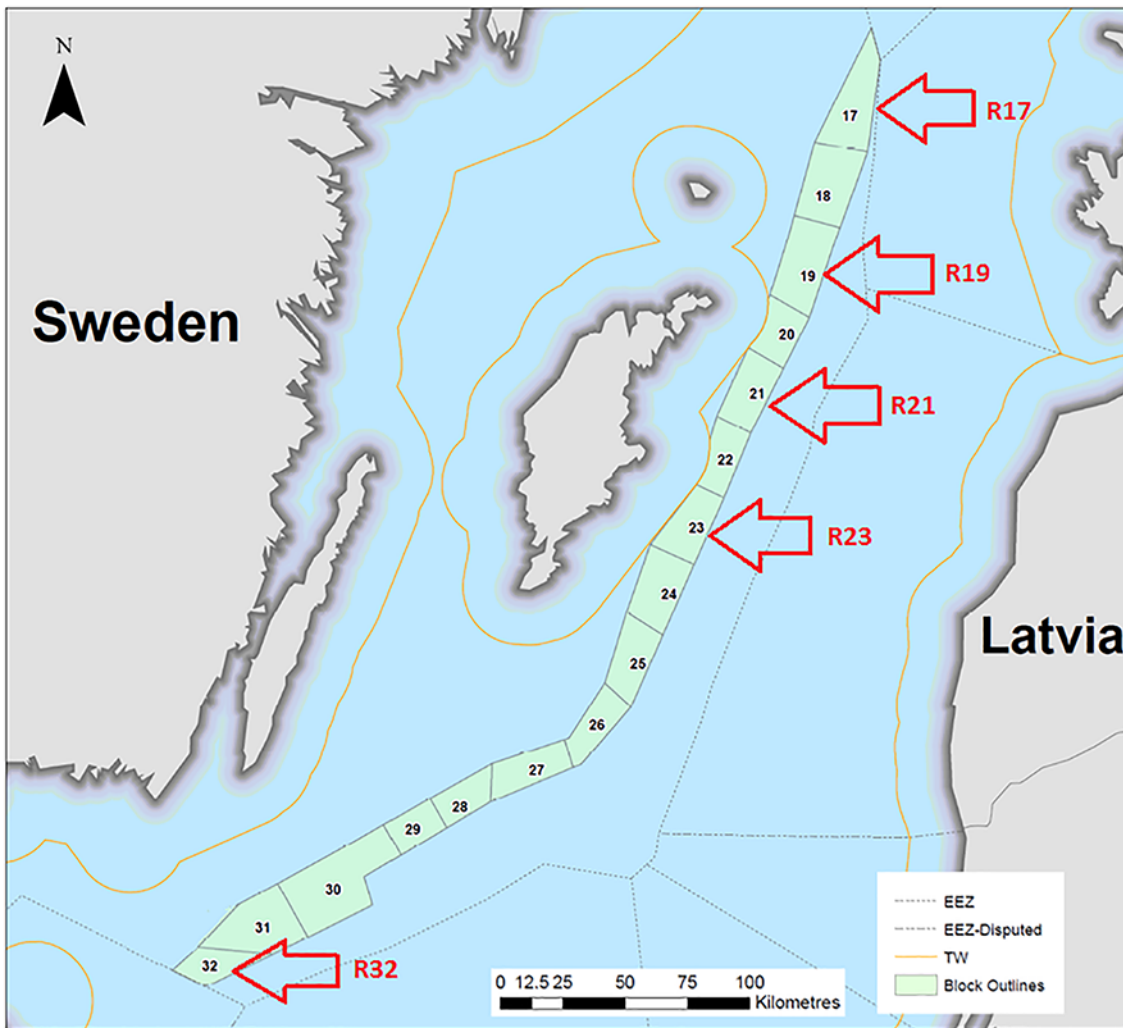
Seabed surveys along the planned route for the gaspipeline between Russia and Germany will be performed by M/V Stril Explorer/LAZT7.

Manouverability is restricted during ROV operations, safety distance of at least 500 m requested.

R32	a)	55-33N	015-50E
R23	b)	57-15N	019-20E
R21	c)	57-40N	019-40E
R19	d)	58-07N	020-00E
R17	e)	58-45N	020-18E

Not shown in ENC.





Seabed surveys

Nord Stream 2, Zug. Publ. 28 december 2017

**Kattegat**

\* 12751 (T)

Chart: 1352, 9312

Sweden. Kattegat. Port of Göteborg. Frihamnen. Kvillepiren. Pipeline.

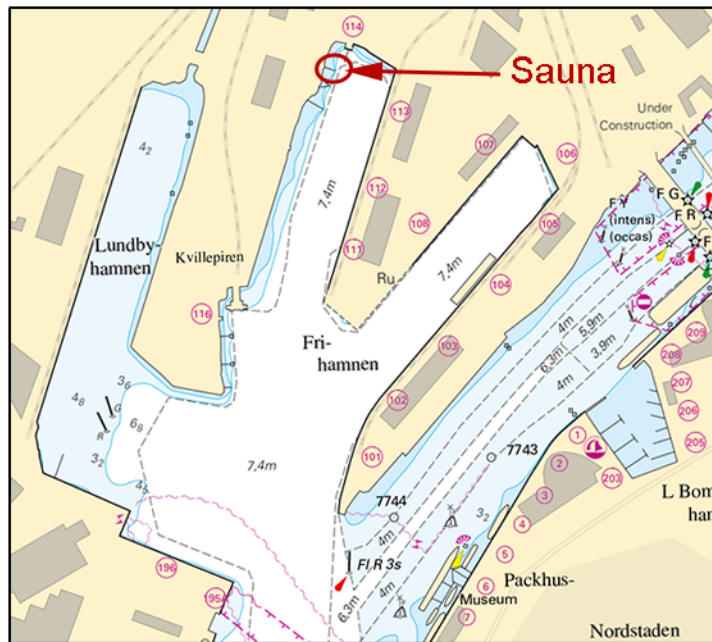
Time: January - March, 2018

A submarine pipeline will temporarily be placed along the seabed in the area around the sauna in Frihamnen.

Sauna in Frihamnen	57-43,014N	011-57,427E
--------------------	------------	-------------

Not shown in ENC.

Bsp Göta kanal 2011/s59, Bsp Västkusten S 2016/s59



Frihamnen in Göteborg

Älvstranden Utveckling AB. Publ. 28 december 2017

**Lake Vänern and Trollhätte kanal**

\* 12750 (T)

Chart: 931

**Sweden. Lake Vänern and Trollhätte kanal. Nordre Älv. Cable ferry crossing at Kornhall. Fairway closed.**

Expired notices: 2017:680/12712(T)

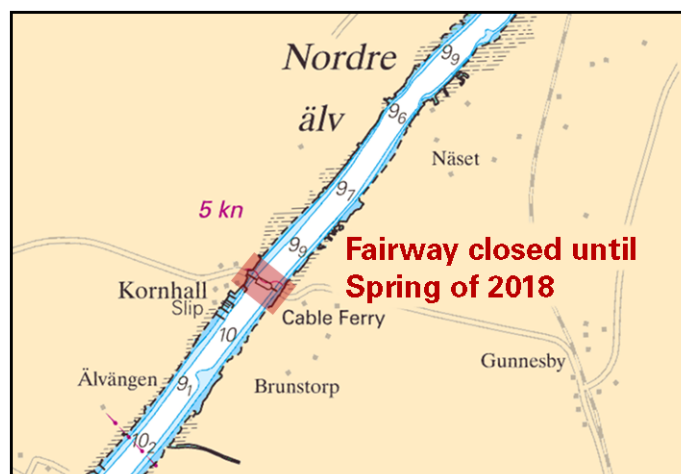
Time: December 2017 until Spring of 2018.

A rope fitted with red and yellow floats has been deployed across Nordre Älv approximately 70 m upstream from the ferry landing point at Kornhall. This temporary measure is undertaken in order to prevent ice floes from causing undue disturbance to the operation of the cable ferry. The fairway is closed.

If a vessel needs to pass the site, contact the Officer on Watch on VHF Ch 16, by telephone (ferry) on +46 10 123 26 95 or contact supervisor Mr Martin Boman on +46 736 56 08 91 (only during ice-free conditions).

Kornhall	57-49,13N	011-52,77E
----------	-----------	------------

Bsp Västkusten S 2016/s62



Fairway closed at Kornhall

Trafikverket Färjerederiet. Publ. 23 december 2017