

Notices to Mariners, SWEDEN Swedish Maritime Administration



Areas in Swedish Notices to Mariners



SJÖFARTSVERKET

Editorial office
Swedish Maritime Administration
Ufs
601 78 NORRKÖPING
Sweden
tel: 0771 630 605
e-mail: ufs@sjofartsverket.se
Publisher:
Hydrographer Patrik Wiberg

ANNOUNCEMENTS

* 12727

Chart: 6181

Södertälje. Bridges "Södra Kanalbroarna". Times for bridge opening. December 10, 2017 - December 8, 2018.

Opening times are valid until December 8, 2018

Opening times:	
Daily	0028 - 0048 LT
	0200 - 0220 LT
	0300 - 0320 LT
	0420 - 0440 LT
	1013 - 1033 LT
	1313 - 1333 LT
	2313 - 2333 LT
Monday - Saturday	1928 - 1948 LT
Saturday - Sunday	0735 - 0755 LT

Contact Södertälje Canal on telephone: +46 771-630 655 or VHF ch. 68 at least 4 hours before passage. Minor deviations may occur on holidays and on day before holiday. The stated times include swinging time of the bridges. Minor delays may occur due to crossing railway traffic.

Bridges 'Södra kanalbroarna'	59-11,09N	017-38,58E
------------------------------	-----------	------------

Bsp Mälaren - Hjälmarén 2016/s30, s31

Trafikverket, Stockholm. Publ. 13 december 2017

NOTICES

The Quark

* 12730 (T)

Chart: 42, 429, 512

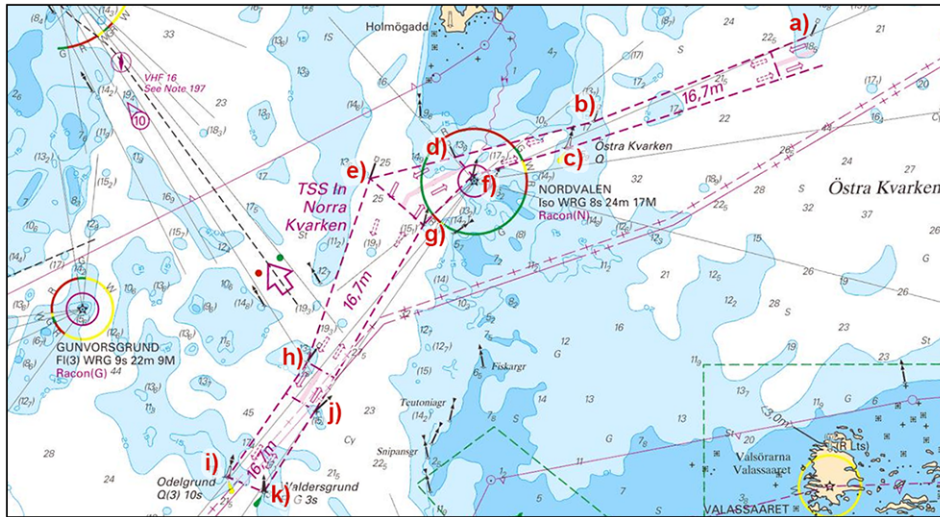
Finland, Sweden. The Quark. TSS in Norra Kvarken. Buoyage withdrawn for the winter.

Time: Until spring 2018.

Following buoys and spar buoys in the traffic separation scheme 'TSS in Norra Kvarken' have been withdrawn for the winter.

port hand spar buoy	a)	63-35,40N	021-03,33E
port hand spar buoy	b)	63-33,50N	020-52,35E
north cardinal light buoy, Östra Kvarken	c)	63-32,89N	020-51,03E
port hand spar buoy	d)	63-32,71N	020-45,38E
port hand spar buoy	e)	63-32,24N	020-41,09E
starboard hand spar buoy	f)	63-32,29N	020-46,25E
starboard hand spar buoy	g)	63-31,18N	020-43,77E
port hand spar buoy	h)	63-28,13N	020-37,93E
east cardinal light buoy, Odelgrund	i)	63-25,53N	020-33,93E
starboard hand spar buoy	j)	63-27,04N	020-38,33E
starboard hand light buoy Waldersgrund	k)	63-25,20N	020-35,74E

Bsp Bottenhavet N 2013/s34, s35



TSS in Norra Kvarken

Sjöfartsverket, Luleå. Publ. 14 december 2017

Sea of Bothnia

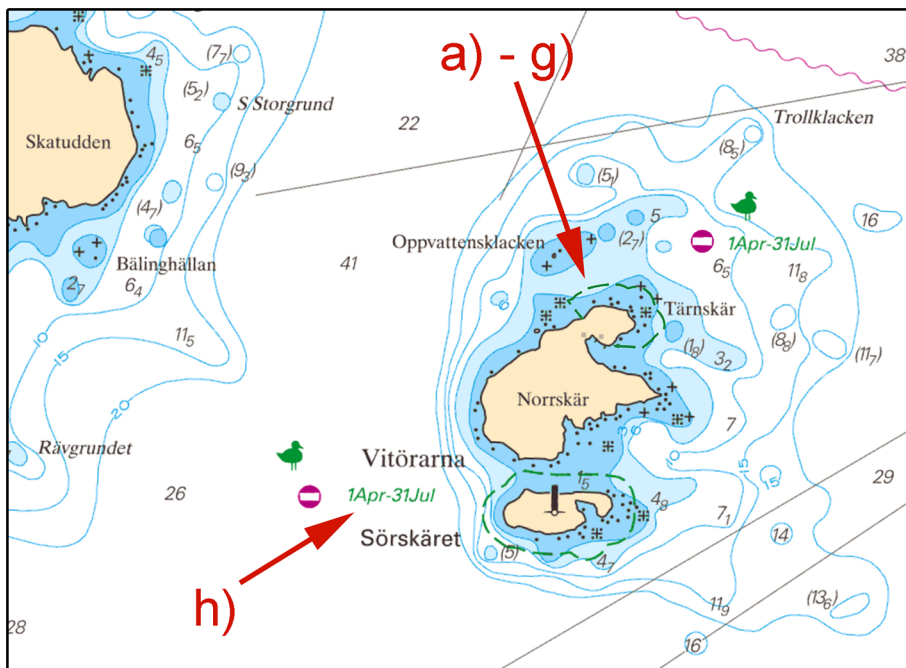
* 12541

Chart: 525

Sweden. Sea of Bothnia. Vitörarna. Nordanstig. Bird sanctuaries.

Insert	bird sanctuary, entry prohibited annually between April 1 - July 31	a)	61-59,539N	017-30,573E
		b)	61-59,533N	017-30,770E
		c)	61-59,589N	017-30,905E
		d)	61-59,699N	017-30,793E
		e)	61-59,713N	017-30,494E
		f)	61-59,669N	017-30,302E
		g)	61-59,615N	017-30,401E
Amend	time when entry is prohibited at bird sanctuary "Sörskäret" to 1Apr - 31Jul	h)	61-59,047N	017-30,233E

Bsp Bottenhavet S 2013/s13



Bird sanctuaries, Vitörarna

Länsstyrelsen Gävleborg. Publ. 14 december 2017

* 12724 (T)

Chart: 429, 512, 5121

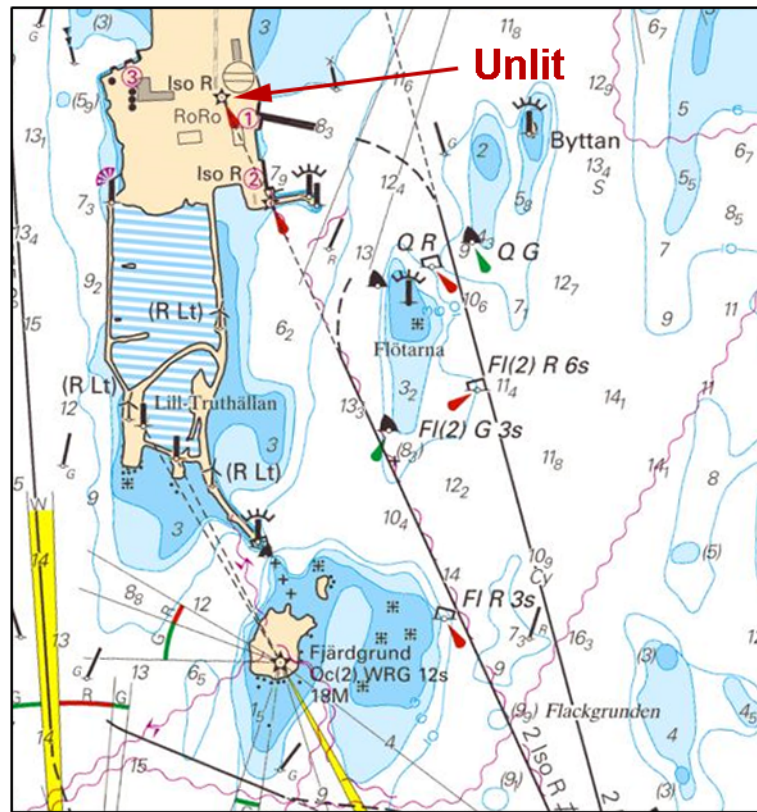
Sweden. Sea of Bothnia. Umeå. Leading light unlit.

Time: Until further notice

The red leading light on southern part of Hillskär is unreliable. The rear light is unlit.

Leading light unlit	63-40,92N	020-20,34E
---------------------	-----------	------------

Bsp Bottenhavet N 2013/s32, s37, s45, s46, s47



Hillskär

Kvarken Ports. Publ. 12 december 2017

Northern Baltic

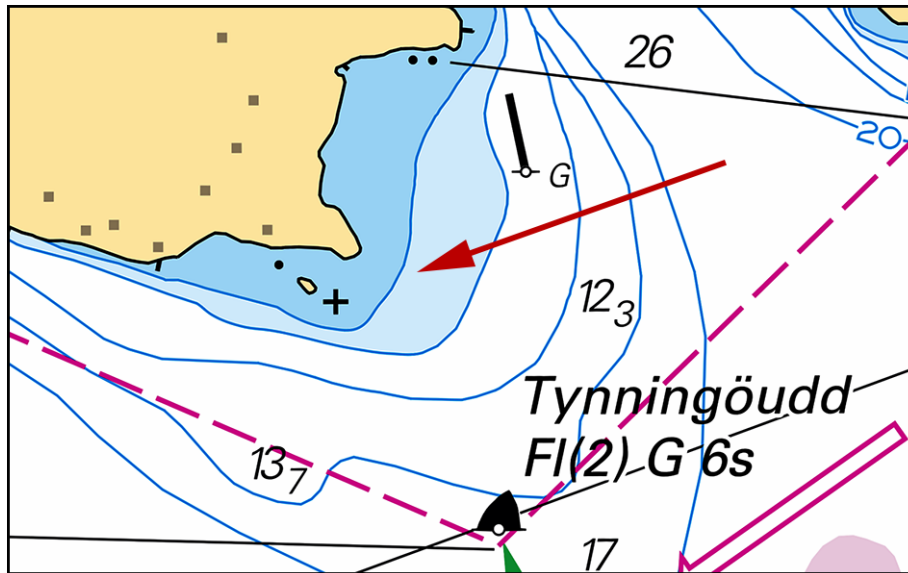
* 12599

Chart: 6142

Sweden. Northern Baltic. Stockholm archipelago. Tynningö. Tynningöudd. Shoal.

Insert	underwater rock in psn a) and adjust 3 m depth contour	a)	59-21,639N	018-25,885E
--------	--	----	------------	-------------

Bsp Stockholm M 2016/s15, s21



Tynningöudd

Sjöfartsverket, Norrköping. Publ. 14 december 2017

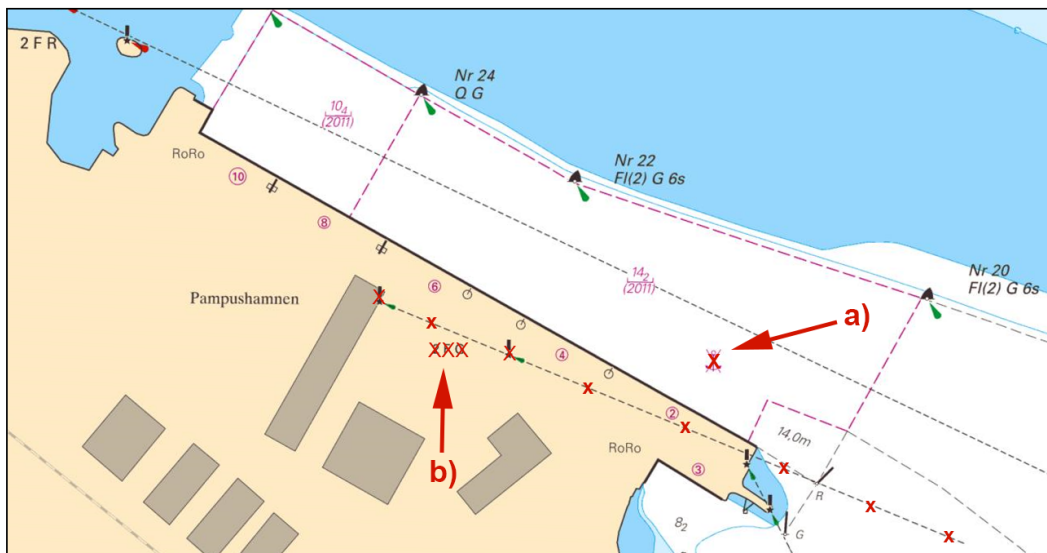
* 12717

Chart: 6212

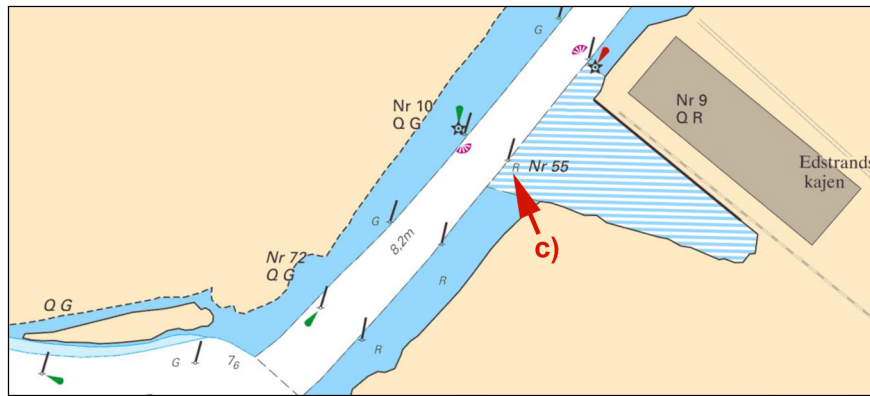
Sweden. Northern Baltic. Port of Norrköping. Pampushamnen. Lindökanalen. Anchoring prohibition cancelled. Lights withdrawn. Buoyage.

Delete	anchoring prohibition in the harbor bassin	a)	58-37,33N	016-14,94E
Delete	lights in line, 2 F G, with associated information	b)	58-37,34N	016-14,68E
Amend	light spar buoy Nr 55 to spar buoy without light	c)	58-36,434N	016-13,761E

Bsp Ostkusten 2015/s26, s58, s59



Pampushamnen, Norrköping



Norrköping, amendment to spar buoy

Norrköpings Hamn AB. Publ. 13 december 2017

* 12720

Chart: 6141, 6142

Sweden. Northern Baltic. Stockholm. Strömmen. New Year's Eve firework.

Time: Between 2345 LT on December 31, 2017 until 0020 LT on January 1, 2018

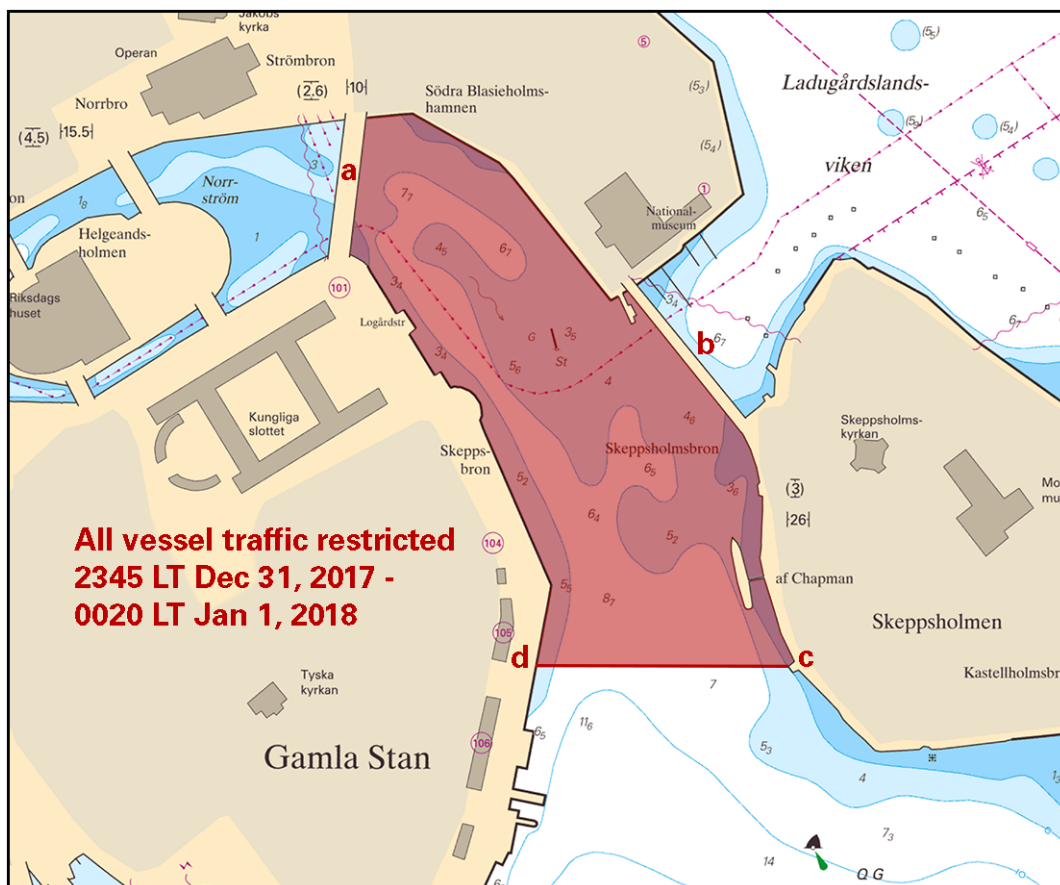
All vessels are prohibited inside marked-out area in the chartlet during the stated time period.

Fluorescent buoys are deployed in order to delineate the area which will also be patrolled by guard vessels.

Closed area between a) and d)	a)	59-19,730N	018-04,390E	Bridge 'Strömbron'
	b)	59-19,639N	018-04,754E	Bridge 'Skeppsholmsbron'
	c)	59-19,464N	018-04,866E	Skeppsholmen
	d)	59-19,470N	018-04,590E	Skeppsbron

Not shown in ENC.

Bsp Mälaren - Hjälmarén 2016/s52, Bsp Stockholm M 2016/s06, s10



Restricted area - Fireworks display at Strömmen

Länsstyrelsen Stockholm. Publ. 14 december 2017

Lake Mälaren and Södertälje kanal

* 12394

Chart: 111, 113

Sweden. Lake Mälaren and Södertälje kanal. Lake Mälaren. Strängnäs. Stora Rullingen. Shoal.

Amend	3 metre depth contour and insert underwater rock	59-23,479N	017-05,542E
--------------	--	------------	-------------

Bsp Mälaren - Hjälmarén 2016/s26



Shoal south of island St Rullingen

Sjöfartsverket, Norrköping. Publ. 9 december 2017

* 12722 (T)

Chart: 6141

Sweden. Lake Mälaren and Södertälje kanal. Stockholm. Gröndalsbron. Essingebron. Works under the bridges.

Expired notices: 2017:680/12709

Time: December 13-15, 2017, daily 0800-1600 LT.

Mounting of signs on the bridges are in progress during stated time.

The works are conducted from the barge King Kong, assisted by the tug boat Jarl. If needed the units may be moved to allow passage. Works from the sea are only taking place during daylight.

Ships must in due time before passage contact VTS Sodertälje on VHF Ch 68 or Jarl on VHF Ch 12, 16 or 68 or tel +46 733 858 287, to get instructions for passage.

Gröndalsbron	59-19,11N	017-59,89E
Essingebron	59-19,41N	017-59,94E

Not shown in ENC.

Bsp Mälaren - Hjälmarén 2016/s50

Trafikverket. Publ. 12 december 2017

Central Baltic

* 12681

Chart: 62, 71

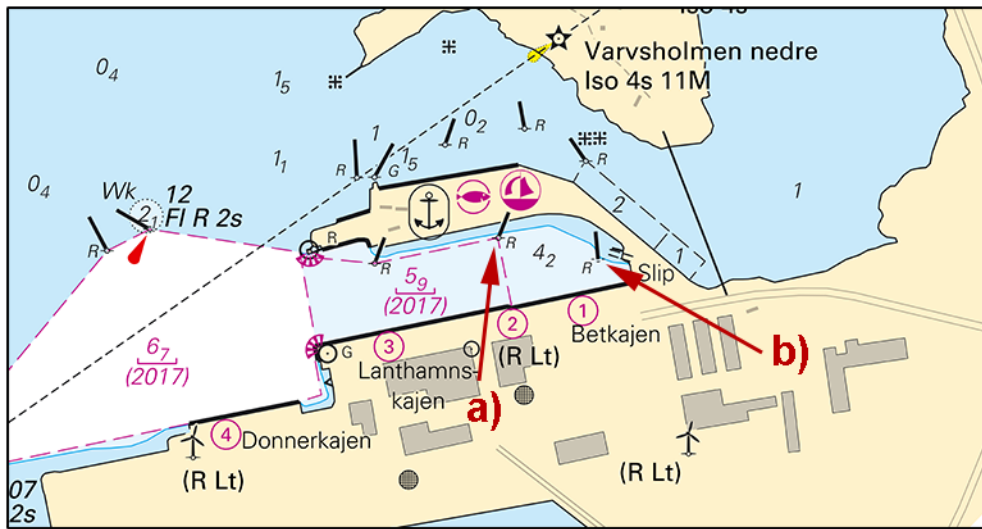
Sweden. Central Baltic. Gotland. Klintehamn. Spar-buoys moved.

Expired notices: 2017:673/12545

See: 2017:645/11995

Move	port hand spar buoy approximately 30 m N to position	a)	57-23,323N	018-11,280E
Move	port hand spar buoy approximately 10 m E to position	b)	57-23,309N	018-11,393E

Bsp Ostkusten 2015/s64



Klintehamn

Region Gotlands hamnar. Publ. 8 december 2017

Southern Baltic

* 12728 (T)

Chart: 743, 839

Sweden. Southern Baltic. Skillinge. Dredging. Buoyage unreliable. Light back in normal operation.

Expired notices: 2016:618/11557(P)

See: 2015:538/10237, 2015:562/10609, 2015:575/10692, 2016:618/11558

Time: From December 27, 2017, until the spring of 2018.

Dredging and hydrographic surveying is in progress in the entrance to Skillinge. At times the navigability may be restricted. Buoyage may be withdrawn or moved.

Great caution advised.

Skillinge	55-28,4N	014-17,1E
-----------	----------	-----------

Not shown in ENC.

Bsp Sydkusten 2012/s53

Simrishamn kommun, Hamnchefen. Publ. 14 december 2017

Kattegat

* 12671

Chart: 931, 9313

Sweden. Kattegat. Göteborg archipelago. Island 'Öckerö'. Marina 'Stakeskärshamnen'. New light. Beacons.

Insert	light Iso 7s 3M	a)	57-42,255N	011-39,745E	all-round light
Insert	fixed small starboard hand beacon	b)	57-42,240N	011-39,758E	
Insert	fixed small starboard hand beacon	c)	57-42,227N	011-39,721E	
Insert	fixed small starboard hand beacon	d)	57-42,217N	011-39,683E	
Insert	fixed east cardinal mark	e)	57-42,202N	011-39,625E	
Insert	fixed small port hand beacon	f)	57-42,230N	011-39,590E	
Insert	fixed small port hand beacon	g)	57-42,235N	011-39,531E	
Insert	fixed small starboard hand beacon	h)	57-42,184N	011-39,576E	
Insert	fixed small port hand beacon	i)	57-42,173N	011-39,575E	
Insert	fixed small port hand beacon	j)	57-42,174N	011-39,523E	
Insert	fixed small port hand beacon	k)	57-42,174N	011-39,476E	
Insert	fixed small port hand beacon	l)	57-42,174N	011-39,427E	
Insert	fixed small port hand beacon	m)	57-42,175N	011-39,380E	
Insert	fixed small port hand beacon	n)	57-42,174N	011-39,333E	

Bsp Västkusten S 2016/s17, s45



Marina 'Stakeskärs hamnen'

Öckerö Hamn & Fiskareförening. Publ. 14 december 2017

Skagerrak

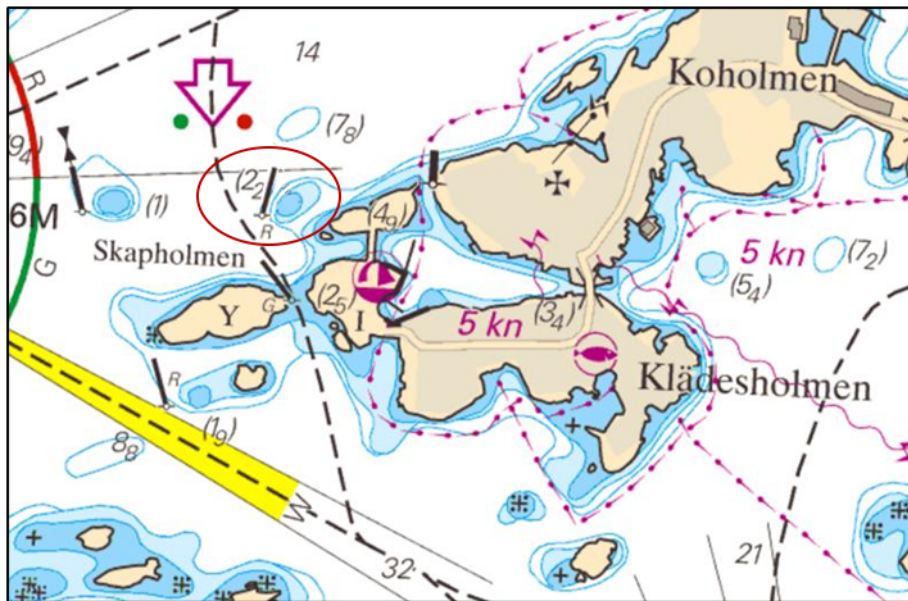
* 12683

Chart: 931, 932, 9321

Sweden. Skagerrak. Tjörn. Klädesholmen. Koholmen. Amendment to buoyage.

Delete	isolated danger mark	57-56,79N	011-32,00E
Insert	port hand spar buoy	57-56,78N	011-31,95E

Bsp Västkusten S 2016/s14, s37



Amended buoyage at Klädesholmen

Sjöfartsverket, Marstrand. Publ. 13 december 2017

Lake Vänern and Trollhätte kanal

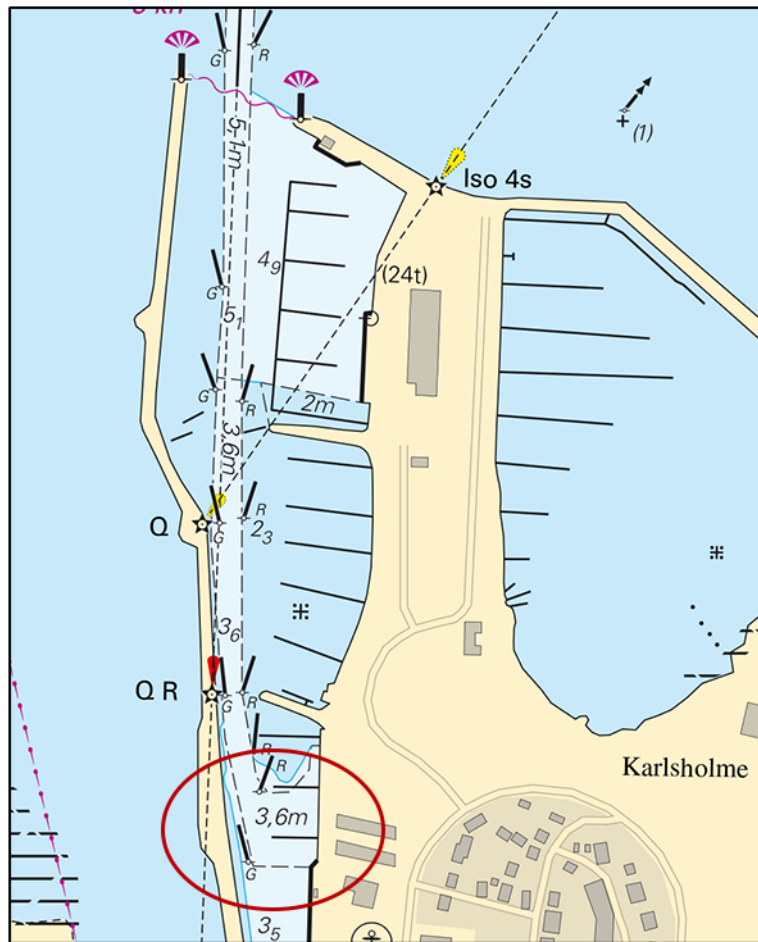
* 12422

Chart: 133

Sweden. Lake Vänern and Trollhätte kanal. Mariestad. Buoyage. New pontoon jetty.

Delete	port hand spar buoy	58-42,84N	013-49,07E
Insert	pontoon jetty according to chartlet	58-42,84N	013-49,07E

Bsp Göta kanal 2011/s62, Bsp Vänern 2014/s48



Mariestad

Sjöfartsverket, Norrköping. Publ. 14 december 2017

* 12718

Chart: 1353

Sweden. Lake Vänern and Trollhätte kanal. Trollhätte kanal. The locks in Trollhättan. Maintenance work finished.

Expired notices: 2017:672/12535(T)

The maintenance work at the locks in Trollhättan is now complete.

The locks in Trollhättan	58-15,90N	012-15,30E
--------------------------	-----------	------------

Bsp Göta kanal 2011/s44, s45

Sjöfartsverket, Trollhätte kanal. Publ. 9 december 2017