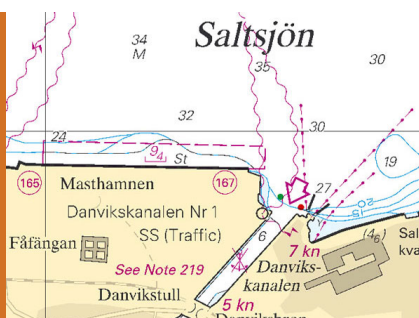


## Notices to Mariners, SWEDEN Swedish Maritime Administration



### Areas in Swedish Notices to Mariners



**SJÖFARTSVERKET**

Editorial office  
Swedish Maritime Administration  
Ufs  
601 78 NORRKÖPING  
Sweden  
tel: 0771 630 605  
e-mail: [ufs@sjofartsverket.se](mailto:ufs@sjofartsverket.se)  
Publisher:  
Hydrographer Patrik Wiberg



## ANNOUNCEMENTS

\* 12609

Chart: 6141, 6142

**Stockholm. Hammarby Waterway. Danviksbron bridge. Amended opening times valid from 2017-12-10.**

Expired notices: 2014:495/9542

|                    |          |           |
|--------------------|----------|-----------|
| Danviksbron bridge | 59-18,8N | 018-06,3E |
|--------------------|----------|-----------|

From December 10, 2017, the following opening times apply at Danviksbron bridge:

|                        |   |
|------------------------|---|
| PLEASURE CRAFT         |   |
| April 13 - October 31  |   |
| Monday-Friday          | 0400* 0500* 0929 1029 1129 1229 1329 1429 1529<br>1829 1929 2029 2129, 2229 2329.               |
| Saturday-Sunday        | 0400* 0500* 0629 0929 1029 1129 1229 1329 1429<br>1529 1629 1729 1829 1929 2034 2134 2234 2334. |
| November 1 - April 12  | Bridge will open on agreement by phone, see *<br>below.   |
| MERCHANT SHIPS         |   |
| Year round as follows: |   |
| Monday-Friday          | when needed during following times: 0915-1540,<br>1829-0640                                     |
| Saturday-Sunday:       | around the clock when needed,   |
|                        | 2330-0630 request by phone is needed, se * below.   |
|                        | If possible passage should take place at times stated<br>under pleasure craft above.            |

\* Request for opening 5 hours before and confirmed 1 hour before on phone +46 8 670 28 10.

NOTE. Changes and delays from given times may occur.

For further information, see Ports of Stockholm website: [www.portsofstockholm.com/stockholm/bridges/](http://www.portsofstockholm.com/stockholm/bridges/).

Bsp Mälaren - Hjälmarén 2016/s52, Bsp Stockholm M 2016/s06, s10

*Stockholms Läns Landsting, Trafikförvaltningen. Publ. 23 november 2017*

\* 12651 (T)

### Recommendations for maritime traffic near land and in archipelagos under ice conditions in order to avoid accidents to persons on the ice. New method for reporting of broken ice.

Every winter there are accidents where people who use the sea ice for transportation or recreation are falling into the icy water or cannot reach shore because the ice has been broken. In some cases the ice has been broken by ships. In order to reduce the risk of such accidents, the following recommendations have been drafted by the Swedish Maritime Administration in cooperation with other authorities and organizations.

#### Follow fairways and pay attention

In ice covered waters shipping should, as far as possible, use fairways shown on charts or the unofficial fairways that are used by local passenger boats and islanders.

If you see people on the ice in vicinity of your planned route you should make sure that the ice is not broken up where they are or the channel through the ice is not making it impossible for the people to get to the shore.

#### Speed restrictions and prohibition to break the ice

In order to ensure that the ice is not broken and thus make it impossible to use for transportation, waters may be closed to navigation or speed restrictions may apply in certain places during winter. Decisions on such restrictions are notified in each case as a temporary notice in the Swedish NtM (Ufs).

#### To be noted before breaking ice channels

A voyage in ice covered waters near shore and in archipelagos require extra good route planning. If possible, follow fairways as mentioned above or existing channels through the ice. Before breaking a new channel you should find out about local conditions and ensure that you are not cutting of the mainland connection for inhabited islands.

#### Inform about upcoming and already existing channels through the ice

NEW METHOD to inform about channels through the ice: Send an e-mail with information about the channel through the ice to [fartyg@skridsko.net](mailto:fartyg@skridsko.net). The text in the e-mail will automatically be published on the website [www.skridsko.net/mail/fartyg/](http://www.skridsko.net/mail/fartyg/) (see attached picture).

Ufs A 2016-2017, chapter 6.5



Webbpage showing reported channels through the ice

Sjöfartsverket, Norrköping. Publ. 23 november 2017

## NOTICES

### Bay of Bothnia

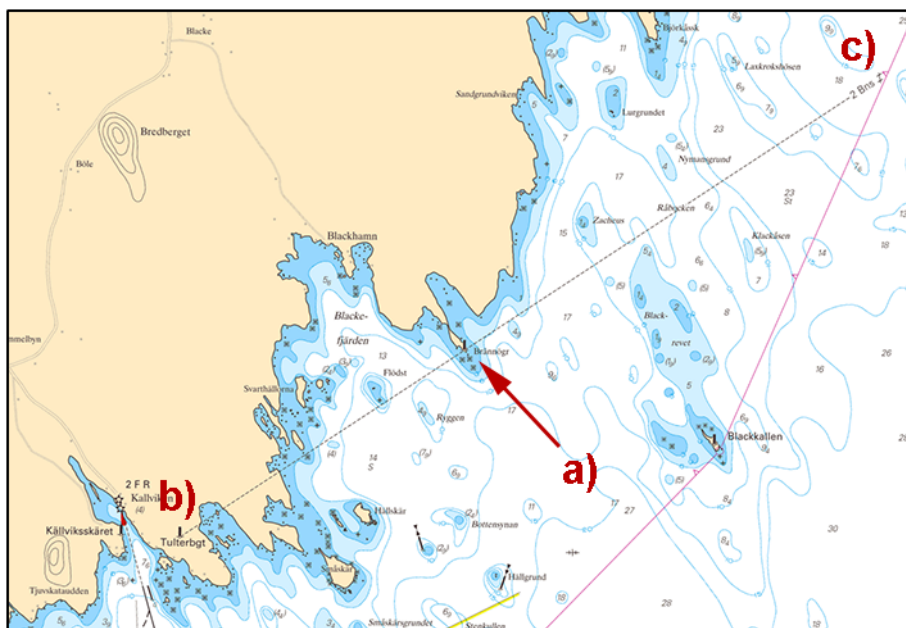
\* 12402

Chart: 42, 422

Sweden. Bay of Bothnia. Lövänger. Brännögrund. Beacon and leading line withdrawn.

|        |                                |    |           |            |
|--------|--------------------------------|----|-----------|------------|
| Delete | beacon                         | a) | 64-20,72N | 021-27,23E |
| Delete | leading line between b) and c) | b) | 64-19,54N | 021-23,13E |
|        |                                | c) | 64-22,33N | 021-32,80E |

Bsp Bottenviken 2014/s47, s50



Leading line withdrawn

Sjöfartsverket, Norrköping. Publ. 21 november 2017

\* 12662 (T)

Chart: 41, 421

Sweden. Bay of Bothnia. E of Byske. Tåme. Gunnery exercises December 5 - 8, 2017.

|                   |        |         |                           |
|-------------------|--------|---------|---------------------------|
| Position: Approx. | 64-55N | 021-30E | Tåme Firing practice area |
|-------------------|--------|---------|---------------------------|

Gunnery exercises will be carried out at Tåme Firing range during times listed below. During these times the charted danger area "R 58" is closed to navigation within stated distance from shore.

During firing a red balloon is shown from the observation towers. Further information on VHF channel 16, call Tåme skjutfält, or phone +46 921 348405 alt. +46 921 349100.

| December | Time           | Range from shore |
|----------|----------------|------------------|
| 5        | 0700 - 1730 LT | 3,3 M            |
| 6        | 0700 - 1730 LT | 3,3 M            |
| 7        | 0700 - 1730 LT | 3,3 M            |
| 8        | 0700 - 1730 LT | 3,3 M            |

Not shown in ENC.

Bsp Bottenviken 2014/s06, s37, s38, s39, s40, s41, s42, s44

*Försvarsmakten, Tåme skjutfält. Publ. 23 november 2017*

## Sea of Bothnia

\* 12672 (P)

Chart: 523

**Sweden. Sea of Bothnia. N of Härnösand. Lungön - Vågnön. Cable. Work area. Amended time.**

Expired notices: 2017:675/12602(P)

Time: November - December 2017

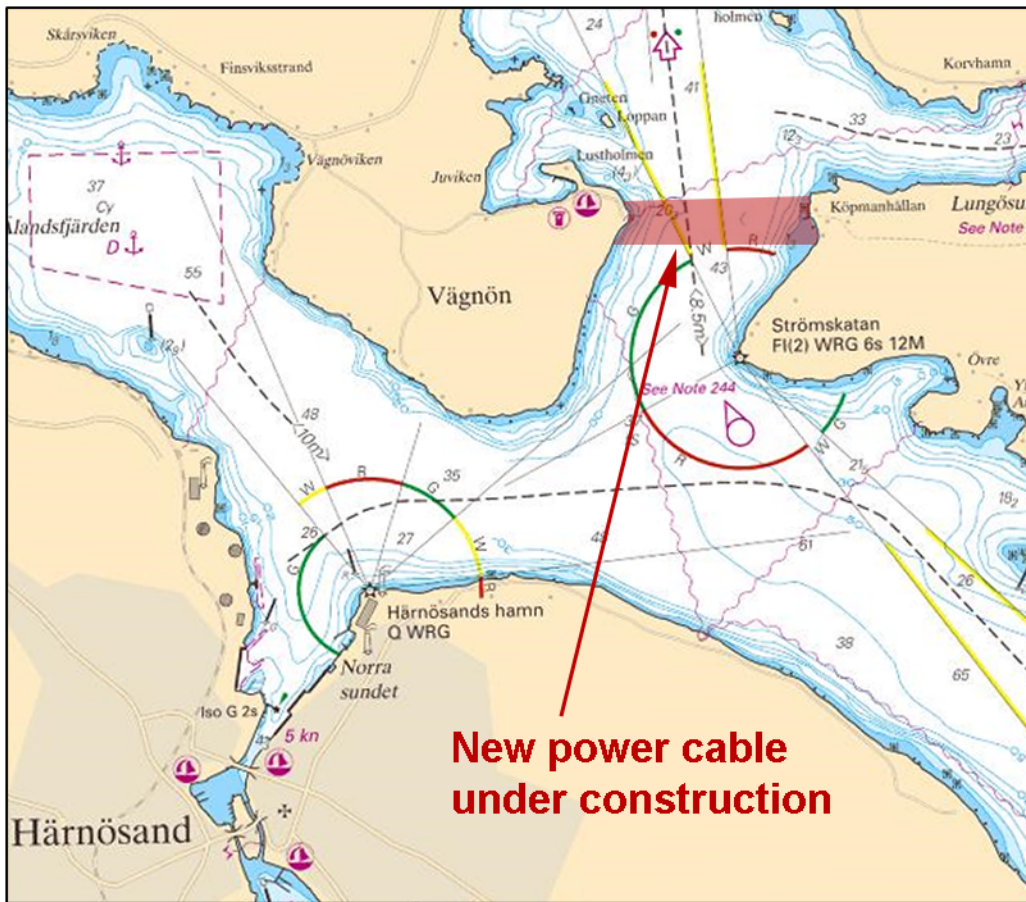
A new submarine power cable is under construction between Vågnön and Lungön.

Mariners are requested to proceed with caution.

|           |           |            |
|-----------|-----------|------------|
| Work area | 62-39,96N | 017-59,90E |
|-----------|-----------|------------|

Not shown in ENC.

Bsp Bottenhavet N 2013/s12



Work area north of Härnösand

Härnösand Energi & Miljö AB. Publ. 23 november 2017

Northern Baltic

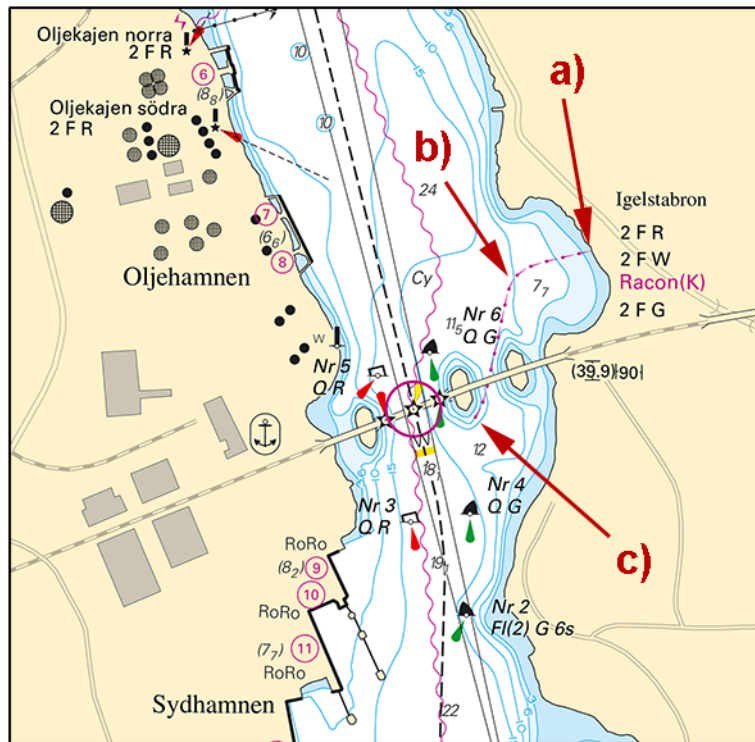
\* 12571

Chart: 6181

Sweden. Northern Baltic. Södertälje. Hallsfjärden. Pipeline.

|        |   |    |           |            |
|--------|---|----|-----------|------------|
| Insert | pipeline according to chartlet, between a) and c) | a) | 59-10,17N | 017-40,23E |
|        |   | b) | 59-10,15N | 017-40,10E |
|        |   | c) | 59-10,03N | 017-40,04E |

Bsp Mälaren - Hjälmarens 2016/s31



Södertälje. Pipeline

AstraZeneca. Publ. 23 november 2017

\* 12655 (T)

Chart: 612

Sweden. Northern Baltic. Stockholm archipelago. Mjölkö. Renovation of ferryberth.

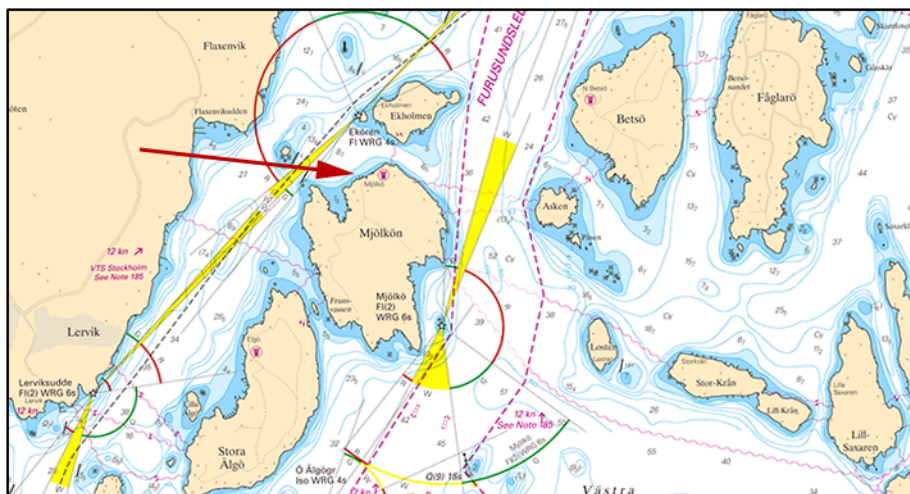
Time: Until further notice

The ferry berth on Mjölkö is under renovation. A temporary berth will be used during the renovation.

|                       |           |            |
|-----------------------|-----------|------------|
| Ferry berth on Mjölkö | 59-27,93N | 018-25,11E |
|-----------------------|-----------|------------|

Not shown in ENC.

Bsp Stockholm N 2016/s38



Ferryberth renovations on Mjölkö

Stockholm Betongkonsult. Publ. 21 november 2017

\* 12670 (T)

Chart: 616, 6162, 6163

Sweden. Northern Baltic. E of Utö. Gunnery exercises. November 28 - December 9. Altered schedule.

Expired notices: 2017:676/12630(T)

Gunnery exercises will be carried out within Utö firing range during stated times. The current extension of the closed area is given in the table.

Information during practice times VHF channel 16, call Utö skjutfält, or phone +46 8 501 570 45. Information about upcoming practice times, phone: +46 10 823 18 23, Muskö Sjöcentral.

| November | Time           | Range from shore |
|----------|----------------|------------------|
| 28       | 1000 - 2000 LT | 3.8 M            |
| 29       | 1000 - 2000 LT | 3.8 M            |
| 30       | 1000 - 2000 LT | 3.8 M            |

| December | Time           | Range from shore |
|----------|----------------|------------------|
| 4        | 1300 - 1700 LT | 3.8 M            |
| 5        | 0830 - 2000 LT | 3.8 M            |
| 6        | 1300 - 1700 LT | 3.8 M            |
| 7        | 0830 - 1700 LT | 3.8 M            |
| 8        | 0830 - 2000 LT | 3.8 M            |
| 9        | 0800 - 2400 LT | 3.8 M            |

|                   |        |         |                        |
|-------------------|--------|---------|------------------------|
| Position: Approx. | 58-54N | 018-20E | Utö Firing Danger Area |
|-------------------|--------|---------|------------------------|

Not shown in ENC.

Bsp Stockholm S 2016/s17, s18, s19, s37

Försvarmakten, Utö. Publ. 23 november 2017

## Lake Mälaren and Södertälje kanal

\* 12639

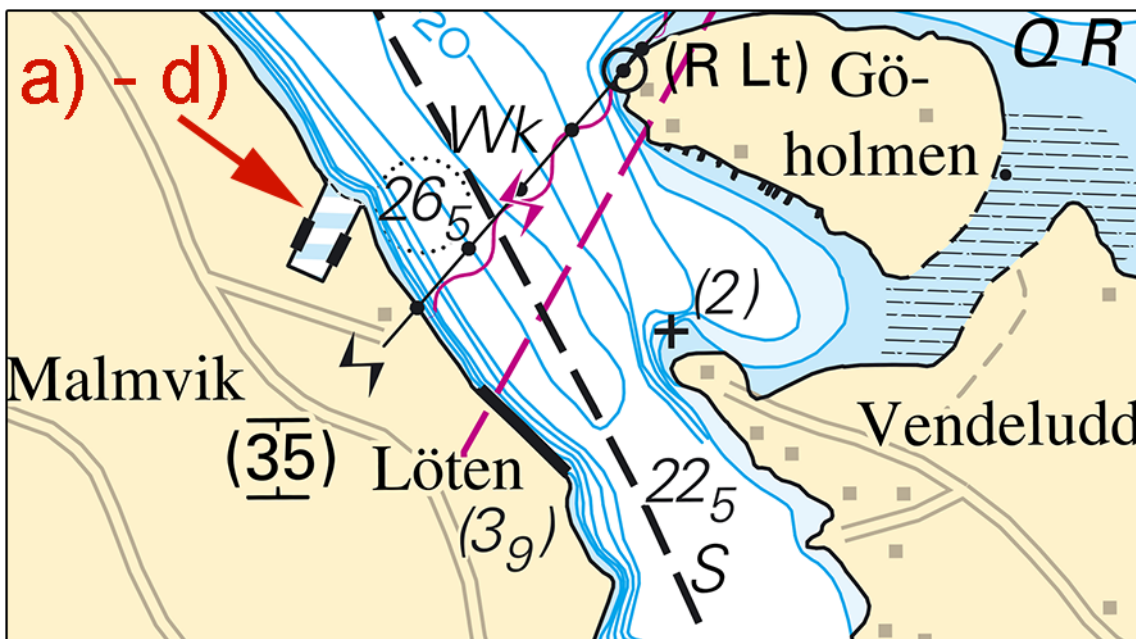
Chart: 111

Sweden. Lake Mälaren and Södertälje kanal. Mälaren. Munsö. Löten. New berth.

|        |                                       |    |            |             |
|--------|---------------------------------------|----|------------|-------------|
| Insert | shoreline and berth between a) - d)   | a) | 59-25,552N | 017-34,799E |
|        |                                       | b) | 59-25,481N | 017-34,734E |
|        |                                       | c) | 59-25,467N | 017-34,793E |
|        |                                       | d) | 59-25,533N | 017-34,859E |
| Insert | unsurveyed area according to chartlet |    |            |             |

Bsp Mälaren - Hjälaren 2016/s48





New berth, Löten

Jehander Publ. 23 november 2017

Southern Baltic

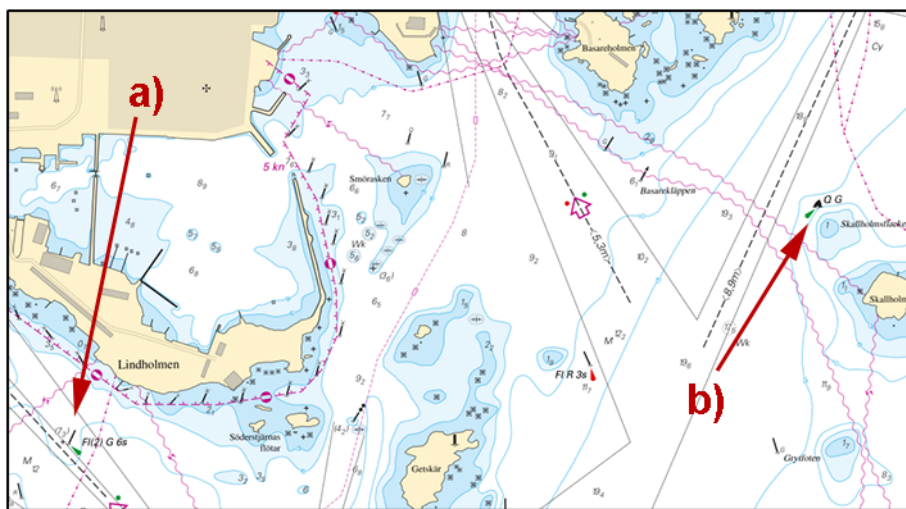
\* 12575

Chart: 741, 7411, 7413

Sweden. Southern Baltic. Karlskrona. Lindholmen. Skallholmsflacket. Buoyage.

|              |   |    |           |            |            |
|--------------|---|----|-----------|------------|------------|
| <b>Amend</b> | starboard hand light buoy to starboard hand light spar buoy | a) | 56-08,87N | 015-35,08E | FI(2) G 6s |
| <b>Amend</b> | starboard hand light spar buoy to starboard hand light buoy | b) | 56-09,22N | 015-37,12E | Q G        |

Bsp Hanöbukten 2014/s16, s40, s41, s42, s43



Karlskrona. Amended buoyage

Karlskrona kommun. Publ. 23 november 2017

\* 12666 (T)

Chart: 7, 74, 742, 743, 8, 83

Sweden. Southern Baltic. S of Åhus. Ravlunda. Firing exercises. December 12, 2017.

|               |        |         |                                      |
|---------------|--------|---------|--------------------------------------|
| Position: Ap. | 55-46N | 014-20E | Firing restriction area R34 RAVLUNDA |
|---------------|--------|---------|--------------------------------------|

Restriction area R34 will be closed for vessels during stated times. During practice orange quick light, Q Or, is shown from shore.

For further information, call +46 44 35 10 32.

| December | Hours       | Range |
|----------|-------------|-------|
| 12       | 0900 - 1700 | 0.9 M |

Not shown in ENC.

Bsp Hanöbukten 2014/s06, s07, s24, s25, s26, s27, s28, s29, s30, s31, s32, s33, Bsp Sydkusten 2012/s06, s07, s29  
 Södra Skånska Regementet, Södra Sandby. Publ. 23 november 2017

**Kattegat**

\* 12673

Chart: 924

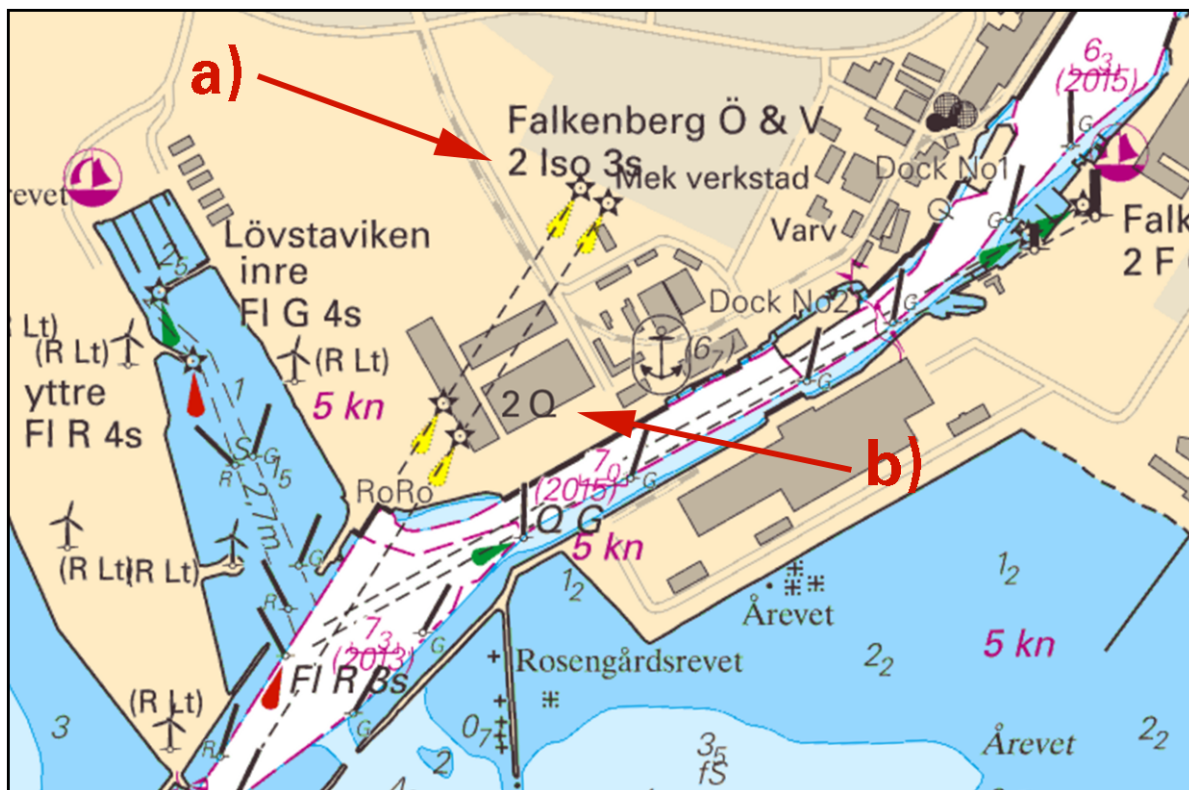
**Sweden. Kattegat. Port of Falkenberg. Leading lights. Amended characters.**

The front leading lights Falkenberg Ö & V have an amended light character as per below.

|               |                                 |    |            |             |
|---------------|---------------------------------|----|------------|-------------|
| <b>Amend</b>  | text '4 Iso 3s' with '2 Iso 3s' | a) | 56-53,609N | 012-28,727E |
| <b>Insert</b> | text '2 Q'                      | b) | 56-53,396N | 012-28,664E |

Adm LoL 0724/0726

Bsp Västkusten S 2016/s27, s66



Leading lights Falkenberg Ö & V

Sjöfartsverket, Norrköping. Publ. 23 november 2017

\* 12675 (T)

Chart: 92, 923, 924

**Sweden. Kattegat. W of Halmstad. Ringenäs. Firing exercise. November 28 - 30.**

|                   |          |           |  |
|-------------------|----------|-----------|--|
| Position: Approx. | 56-40,8N | 012-38,6E | Firing restriction area R41 A RINGENÄS |
|-------------------|----------|-----------|--|

Firing will take place at Ringenäs firing range during stated times. The dangerous area extending from shore according to table below. A light on shore, VQ R, will be shown during firing.

Part of restriction area R41A will be closed for vessels during stated times. During practice, light VQ R is shown from shore.

For further information call +46 35 266 39 55, +46 35 536 77.

| November | Time           | Range |
|----------|----------------|-------|
| 28       | 0900 - 1530 LT | 2,5 M |
| 30       | 1230 - 1630 LT | 2,5 M |

Not shown in ENC.

Bsp Västkusten S 2016/s29, s30

Försvarmakten, Lv6. Publ. 23 november 2017

**Skagerrak**

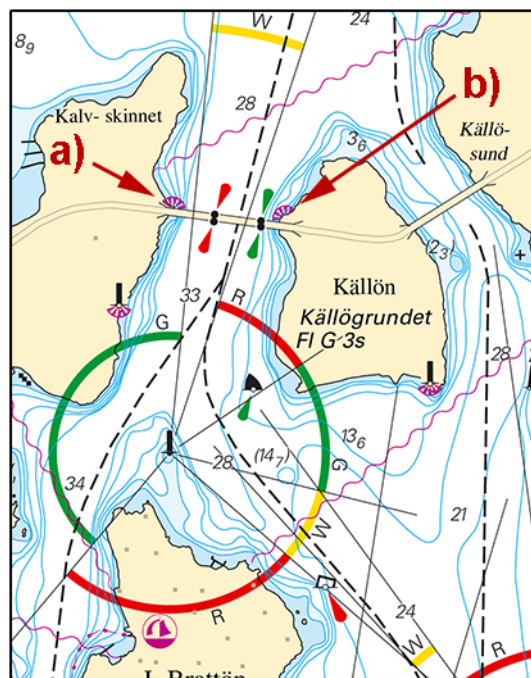
\* 12580

Chart: 932

Sweden. Skagerrak. W of Stenungsund. Almön. Källön. Bridge 'Tjörnbron'. Floodlight.

| Insert | floodlight on the old bridge foundations at bridge 'Tjörnbron' | a) | 58-03,570N | 011-46,712E |
|--------|--|----|------------|-------------|
|        |  | b) | 58-03,561N | 011-47,015E |

Bsp Västkusten N 2016/s25, s36, Bsp Västkusten S 2016/s13, s64



Floodlight. Bridge Tjörnbron

Sjöfartsverket, Norrköping. Publ. 23 november 2017

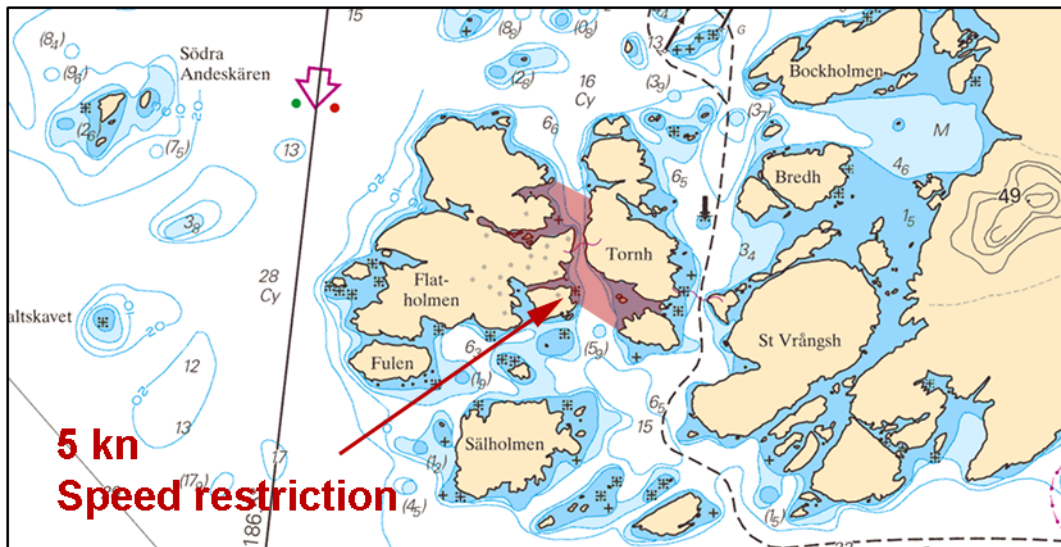
\* 12591

Chart: 9321

Sweden. Skagerrak. W of Tjörn. Flatholmen - Tornholmen. Speed restriction.

|        | New speed restriction, 5 knots, between Flatholmen and Tornholmen |           |            |
|--------|---|-----------|------------|
| Insert | 5 knots   | 57-57,83N | 011-31,30E |

Bsp Västkusten S 2016/s37



Speed restriction at Flatholmen

Länsstyrelsen, Västra Götalands län. Publ. 23 november 2017

\* 12659

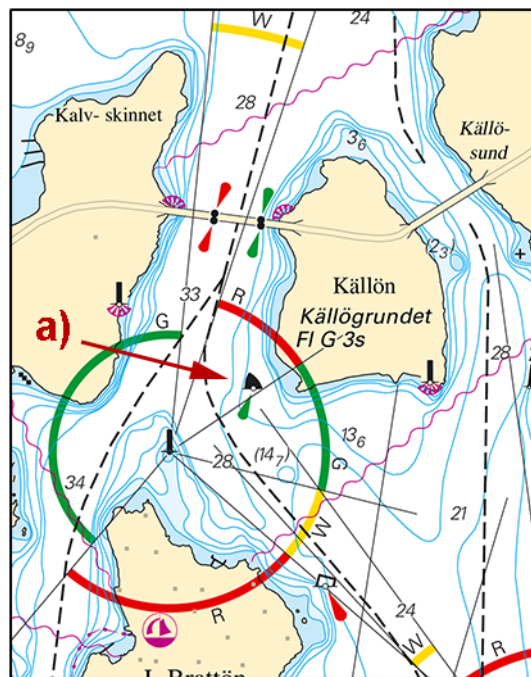
Chart: 932

Sweden. Skagerrak. Stenungsund. S of bridge 'Tjörnbron'. Buoyage.

See: 2017:658/12244

|               |   |    |            |             |
|---------------|---|----|------------|-------------|
| <b>Move</b>   | starboard hand light buoy approximately 100 m south to position | a) | 58-03,316N | 011-46,928E |
| <b>Delete</b> | starboard hand light buoy                                       |    | 58-03,273N | 011-47,016E |

Bsp Västkusten N 2016/s25, s36, Bsp Västkusten S 2016/s13, s64



Källögrundet

Sjöfartsverket, Marstrand. Publ. 23 november 2017

Lake Vänern and Trollhätte kanal

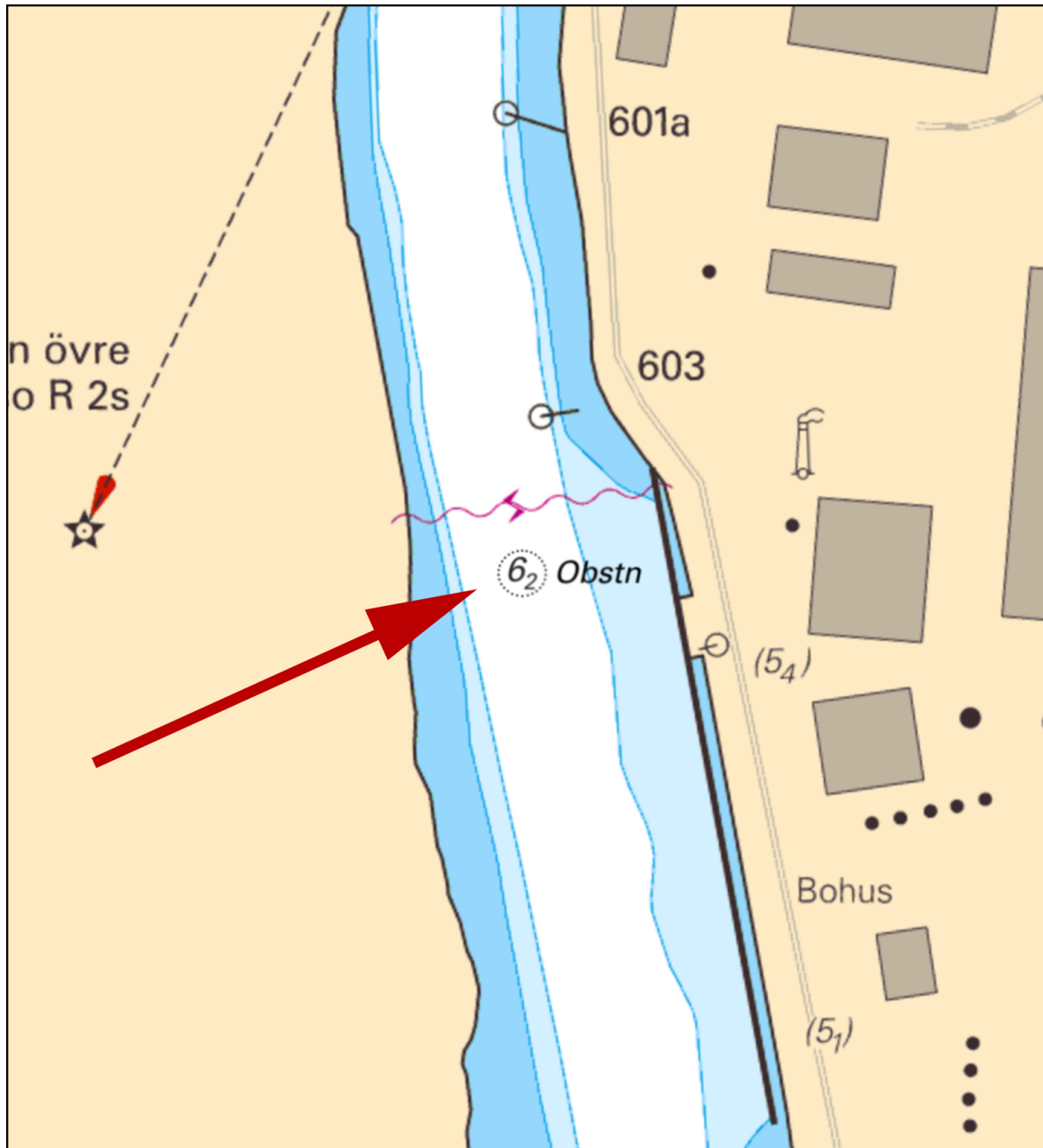
\* 12664

Chart: 1352

Sweden. Lake Vänern and Trollhätte kanal. River 'Göta älv'. N of Gothenburg. Bohus. Obstruction.

|                |  |            |             |
|----------------|--|------------|-------------|
| <b>Replace</b> | depth 6.3 m with obstruction at depth 6.2 m as shown | 57-51,060N | 012-00,479E |
|----------------|--|------------|-------------|

Bsp Göta kanal 2011/s56



River 'Göta älv' at Bohus

MTE AB och Sjöfartsverket, Norrköping. Publ. 18 november 2017

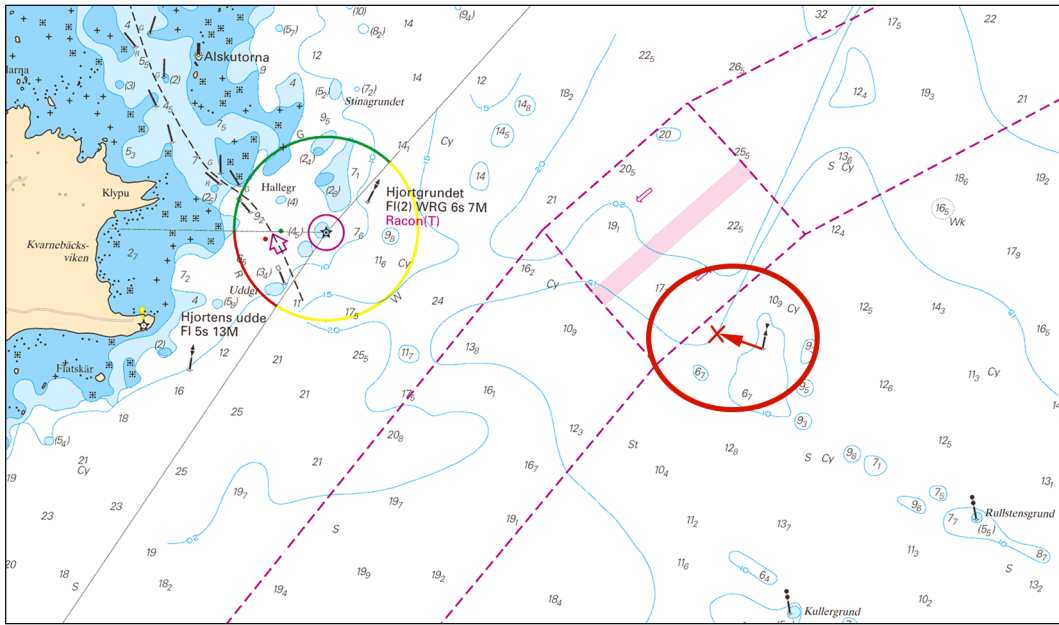
\* 12668

Chart: 13, 135

Sweden. Lake Vänern and Trollhätte kanal. Vänersborgsleden. East of Hjortens udde. West cardinal buoy moved.

|      |                                       |            |             |
|------|---------------------------------------|------------|-------------|
| Move | west cardinal spar buoy 480 metres to | 58-38,307N | 012-45,561E |
|------|---------------------------------------|------------|-------------|

Bsp Göta kanal 2011/s31, s34, Bsp Vänern 2014/s25, s34



Spar buoy moved

Arbetsfartyget Gina. Publ. 23 november 2017